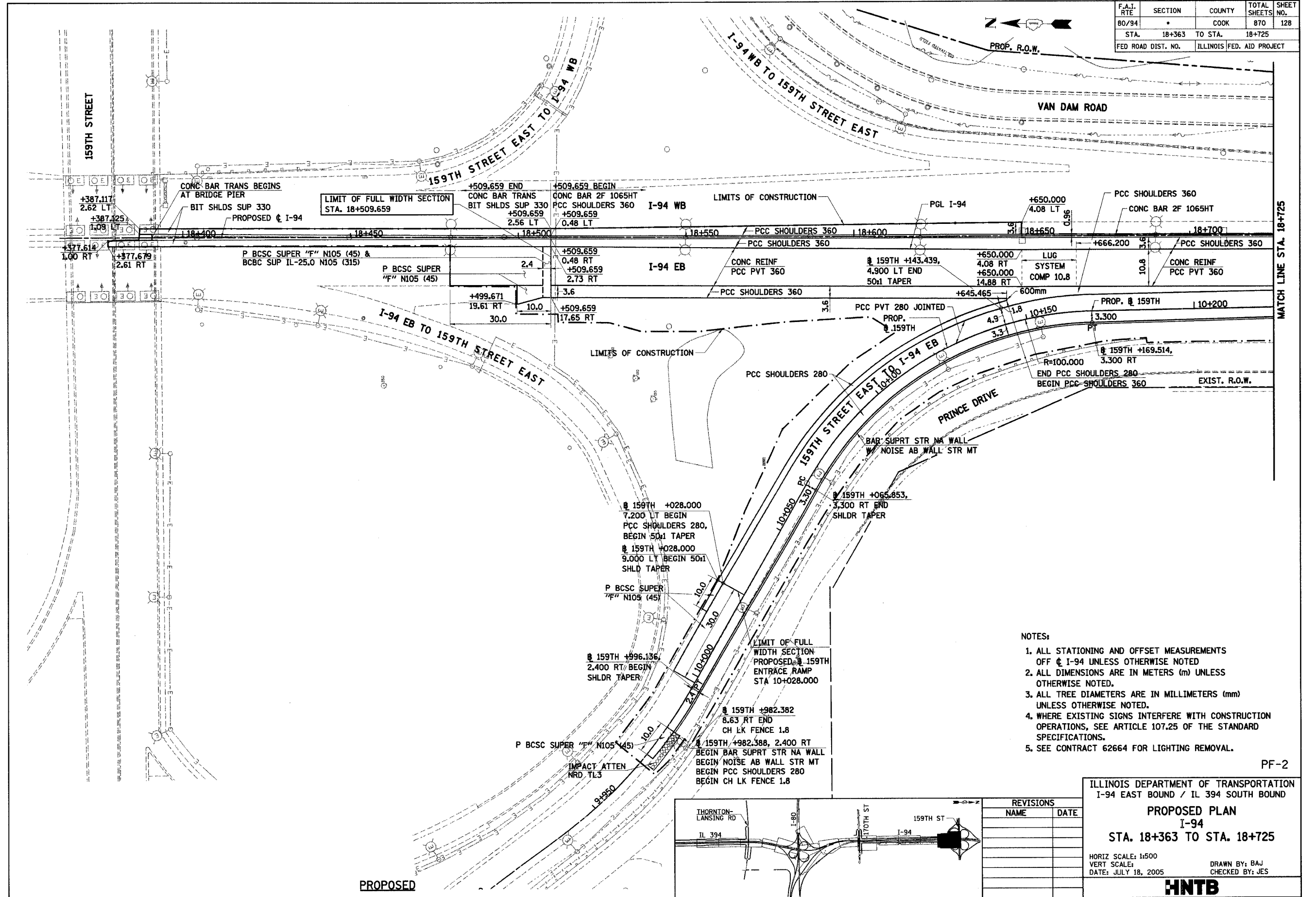


F.A.I. RTE	SECTION	COUNTY	TOTAL SHEETS	SHEET NO.
80/94	*	COOK	870	128
STA.	18+363	TO STA.	18+725	
FED ROAD DIST. NO.	ILLINOIS		FED. AID PROJECT	



- NOTES:
1. ALL STATIONING AND OFFSET MEASUREMENTS OFF @ I-94 UNLESS OTHERWISE NOTED
 2. ALL DIMENSIONS ARE IN METERS (m) UNLESS OTHERWISE NOTED.
 3. ALL TREE DIAMETERS ARE IN MILLIMETERS (mm) UNLESS OTHERWISE NOTED.
 4. WHERE EXISTING SIGNS INTERFERE WITH CONSTRUCTION OPERATIONS, SEE ARTICLE 107.25 OF THE STANDARD SPECIFICATIONS.
 5. SEE CONTRACT 62664 FOR LIGHTING REMOVAL.

PF-2

ILLINOIS DEPARTMENT OF TRANSPORTATION
I-94 EAST BOUND / IL 394 SOUTH BOUND

PROPOSED PLAN
I-94
STA. 18+363 TO STA. 18+725

HORIZ SCALE: 1:500
VERT SCALE:
DATE: JULY 18, 2005

DRAWN BY: BAJ
CHECKED BY: JES

HNTB

REVISIONS	
NAME	DATE

