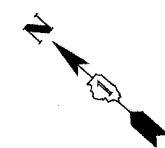
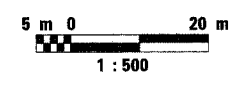
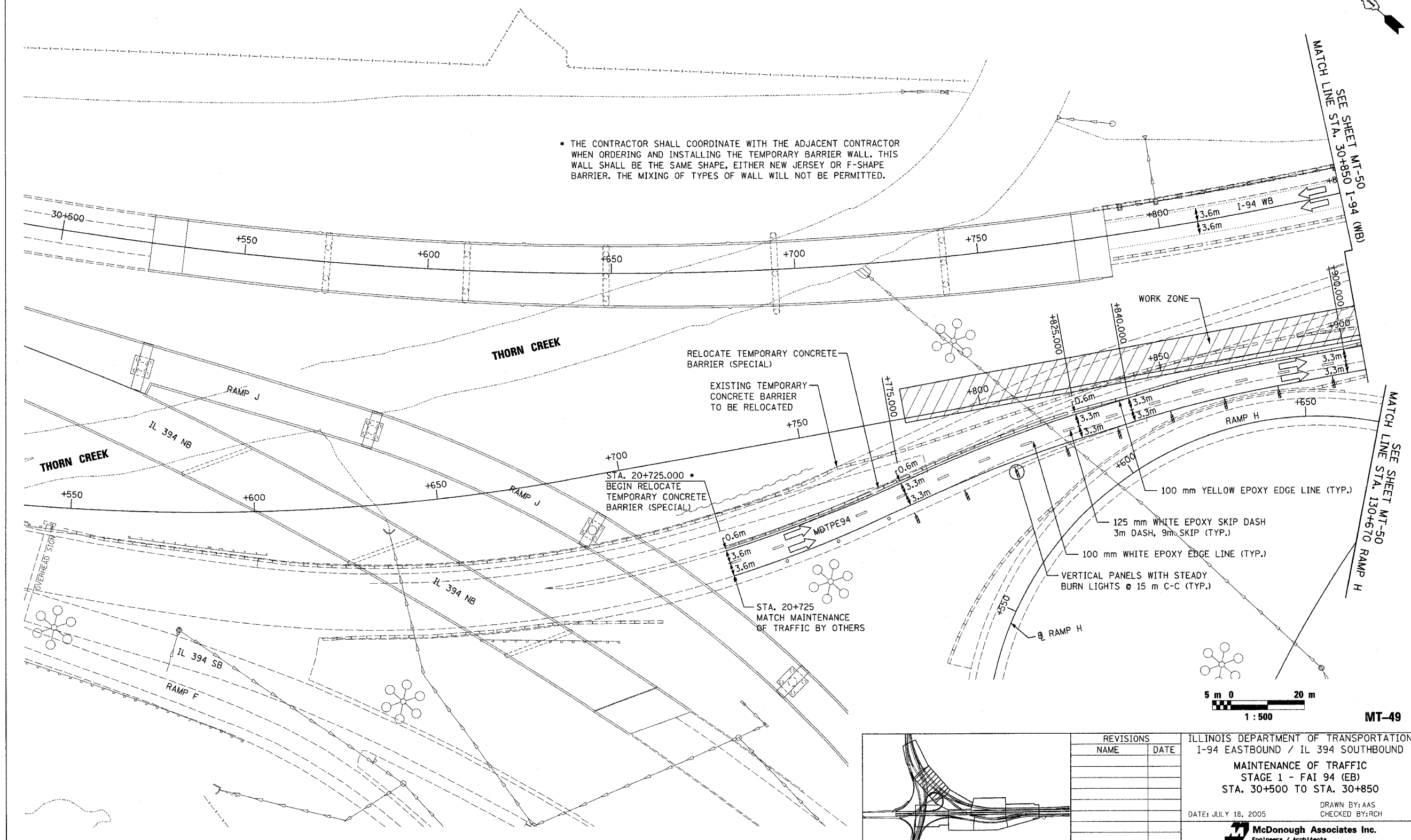


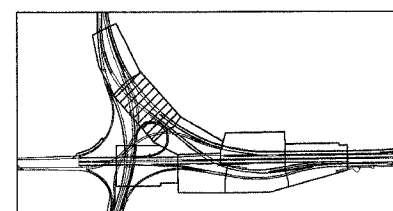
* I0203.1 & 0312-708W R-3		CONTRACT #62108	
F.A.I. RTE.	SECTION	COUNTY	TOTAL SHEET NO.
80/394	*	COOK	870 123
STA. 30+500.00		TO STA. 30+850.00	
FED. ROAD DIST. NO. 1		ILLINOIS FED. AID PROJECT	



THE CONTRACTOR SHALL COORDINATE WITH THE ADJACENT CONTRACTOR WHEN ORDERING AND INSTALLING THE TEMPORARY BARRIER WALL. THIS WALL SHALL BE THE SAME SHAPE, EITHER NEW JERSEY OR F-SHAPE BARRIER. THE MIXING OF TYPES OF WALL WILL NOT BE PERMITTED.



MT-49



REVISIONS	
NAME	DATE

ILLINOIS DEPARTMENT OF TRANSPORTATION
 I-94 EASTBOUND / IL 394 SOUTHBOUND
 MAINTENANCE OF TRAFFIC
 STAGE 1 - FAI 94 (EB)
 STA. 30+500 TO STA. 30+850
 DATE: JULY 18, 2005
 DRAWN BY: AAS
 CHECKED BY: RCH
McDonough Associates Inc.
 Engineers / Architects