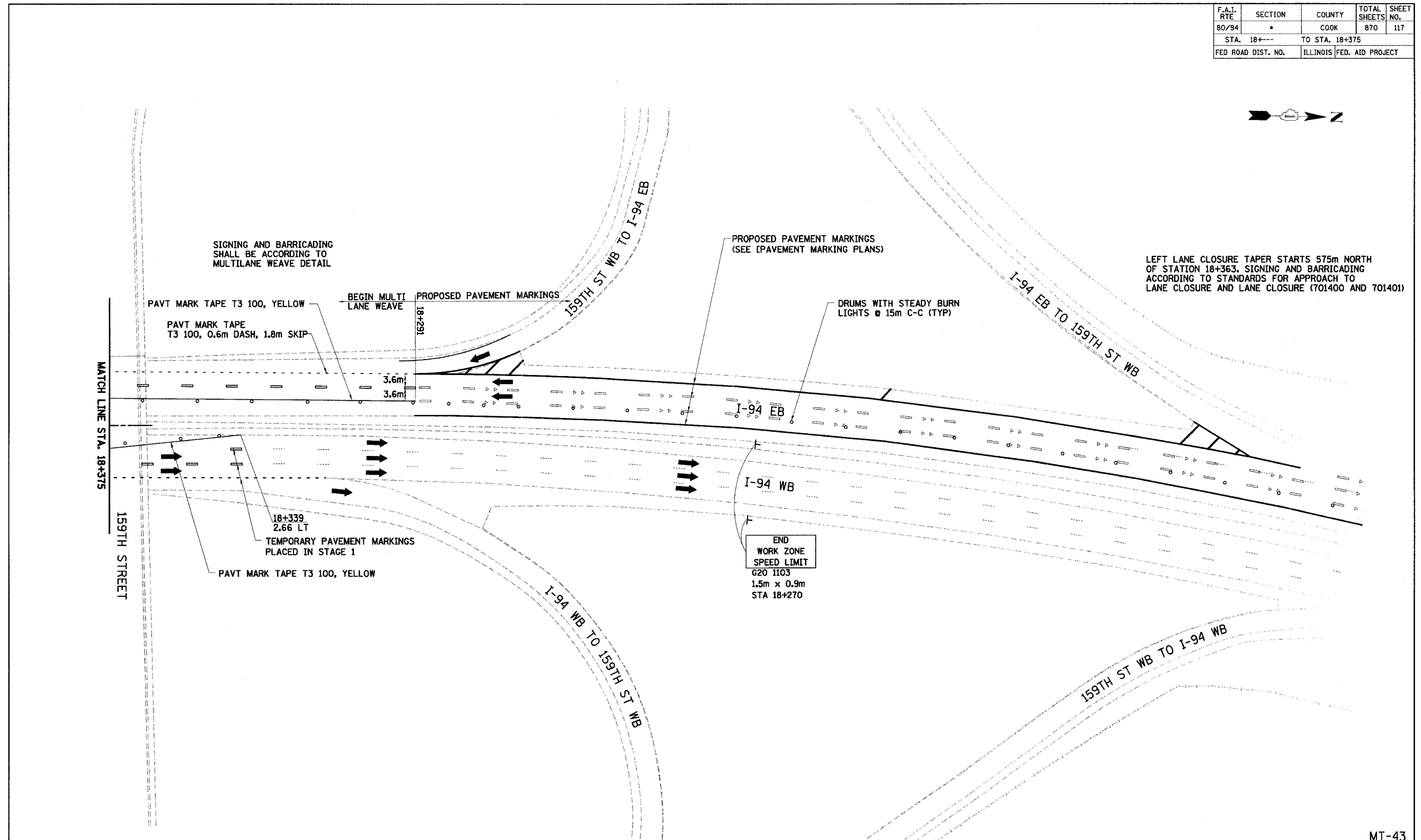


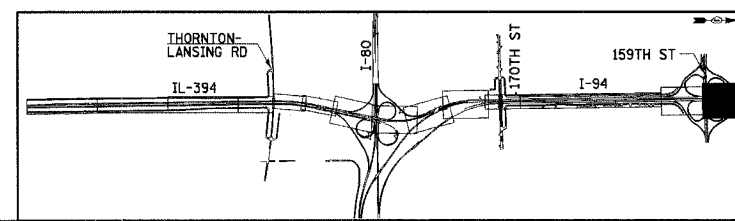
F.A.I. RTE	SECTION	COUNTY	TOTAL SHEETS	SHEET NO.
80/94		COOK	870	117
STA. 18+---		TO STA. 18+375		
FED ROAD DIST. NO.	ILLINOIS	FED. AID PROJECT		



LEFT LANE CLOSURE TAPER STARTS 575m NORTH OF STATION 18+363. SIGNING AND BARRICADING ACCORDING TO STANDARDS FOR APPROACH TO LANE CLOSURE AND LANE CLOSURE (701400 AND 701401)

END WORK ZONE SPEED LIMIT 620 1103 1.5m x 0.9m STA 18+270

LEGEND	
	WORK ZONE
	TEMPORARY PAVEMENT
	TRAFFIC DIRECTION
	LANE CLOSURE
	DRUMS WITH STEADY BURN LIGHTS
	VERTICAL PANELS
	TYPE III BARRICADE WITH 2 FLASHING LIGHTS



REVISIONS	
NAME	DATE

MT-43
ILLINOIS DEPARTMENT OF TRANSPORTATION
I-94 EAST BOUND / IL 394 SOUTH BOUND

MAINTENANCE OF TRAFFIC
I-94 - STAGE 3
STA. 18+253 TO STA. 18+375

HORIZ SCALE: 1:500
VERT SCALE: NONE
DATE: JULY 18, 2005

DRAWN BY: STS
CHECKED BY: JES

HNTB