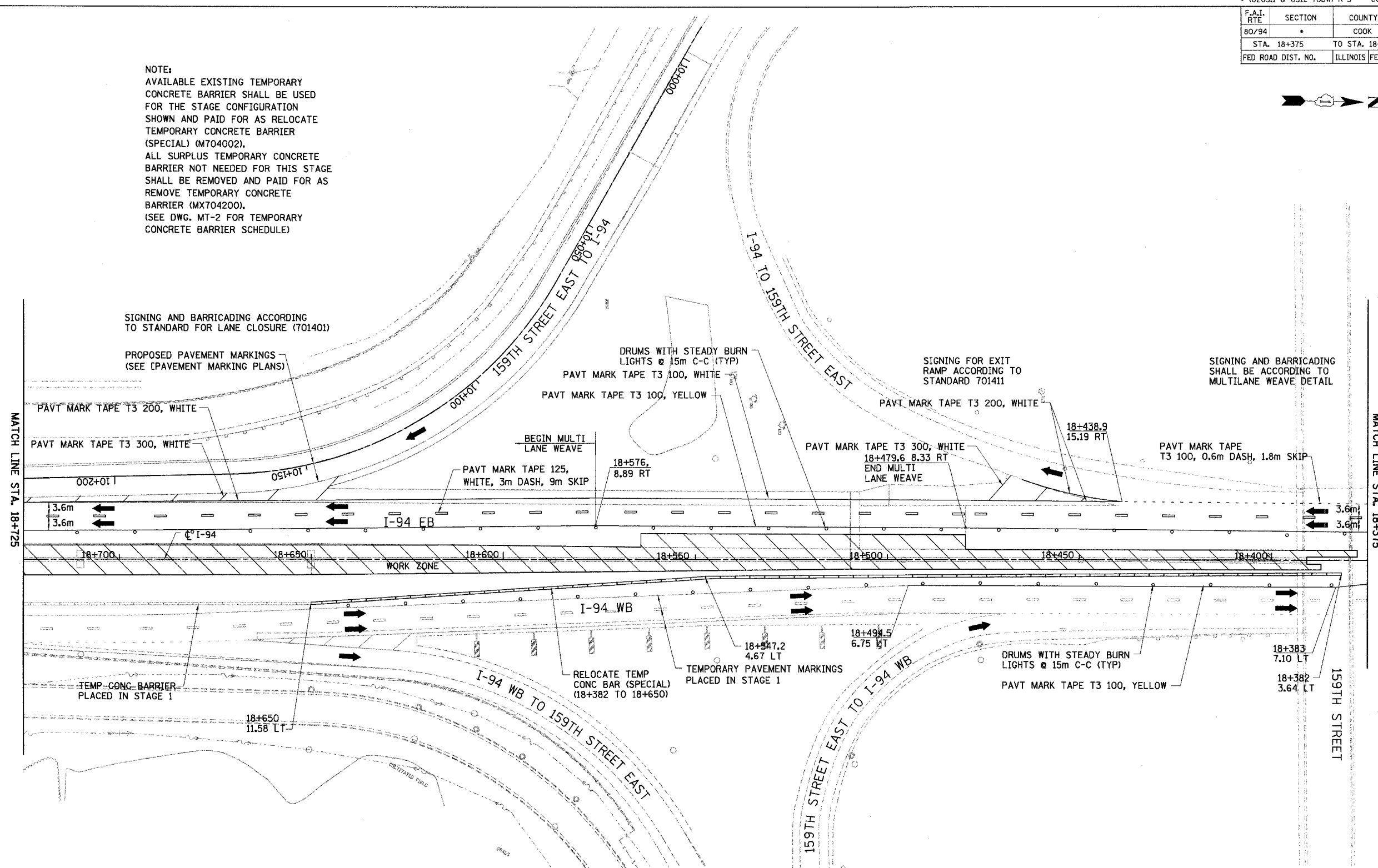


F.A.I. RTE	SECTION	COUNTY	TOTAL SHEETS	SHEET NO.
80/94	*	COOK	870	116
STA. 18+375		TO STA. 18+725		
FED ROAD DIST. NO.		ILLINOIS FED. AID PROJECT		

NOTE:
 AVAILABLE EXISTING TEMPORARY CONCRETE BARRIER SHALL BE USED FOR THE STAGE CONFIGURATION SHOWN AND PAID FOR AS RELOCATE TEMPORARY CONCRETE BARRIER (SPECIAL) (M704002).
 ALL SURPLUS TEMPORARY CONCRETE BARRIER NOT NEEDED FOR THIS STAGE SHALL BE REMOVED AND PAID FOR AS REMOVE TEMPORARY CONCRETE BARRIER (MX704200).
 (SEE DWG. MT-2 FOR TEMPORARY CONCRETE BARRIER SCHEDULE)



SIGNING AND BARRICADING ACCORDING TO STANDARD FOR LANE CLOSURE (701401)

PROPOSED PAVEMENT MARKINGS (SEE PAVEMENT MARKING PLANS)

DRUMS WITH STEADY BURN LIGHTS @ 15m C-C (TYP)

SIGNING FOR EXIT RAMP ACCORDING TO STANDARD 701411

SIGNING AND BARRICADING SHALL BE ACCORDING TO MULTILANE WEAVE DETAIL

MATCH LINE STA. 18+725

MATCH LINE STA. 18+375

3.6m
3.6m

3.6m
3.6m

18+700 18+690 18+680 18+670 18+660 18+650 18+640 18+630 18+620 18+610 18+600 18+590 18+580 18+570 18+560 18+550 18+540 18+530 18+520 18+510 18+500 18+490 18+480 18+470 18+460 18+450 18+440 18+430 18+420 18+410 18+400

TEMP CONC BARRIER PLACED IN STAGE 1

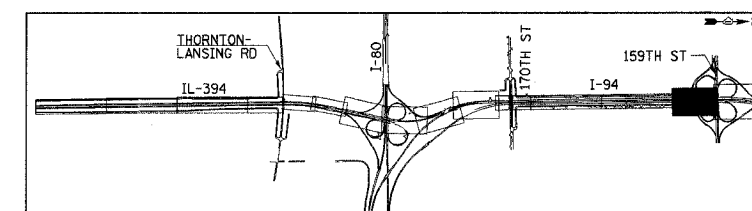
RELOCATE TEMP CONC BAR (SPECIAL) (18+382 TO 18+650)

DRUMS WITH STEADY BURN LIGHTS @ 15m C-C (TYP)

SIGNING AND BARRICADING ACCORDING TO MULTILANE WEAVE DETAIL FOR BOTH EB AND WB I-94

LEGEND

- WORK ZONE
- TEMPORARY PAVEMENT
- TRAFFIC DIRECTION
- LANE CLOSURE
- DRUMS WITH STEADY BURN LIGHTS
- VERTICAL PANELS
- TYPE III BARRICADE WITH 2 FLASHING LIGHTS



REVISIONS	
NAME	DATE

ILLINOIS DEPARTMENT OF TRANSPORTATION
 I-94 EAST BOUND / IL 394 SOUTH BOUND

MT-42

MAINTENANCE OF TRAFFIC
 I-94 - STAGE 3
 STA. 18+375 TO STA. 18+725

HORIZ SCALE: 1:500
 VERT SCALE: NONE
 DATE: JULY 18, 2005

DRAWN BY: STS
 CHECKED BY: JES

HNTB