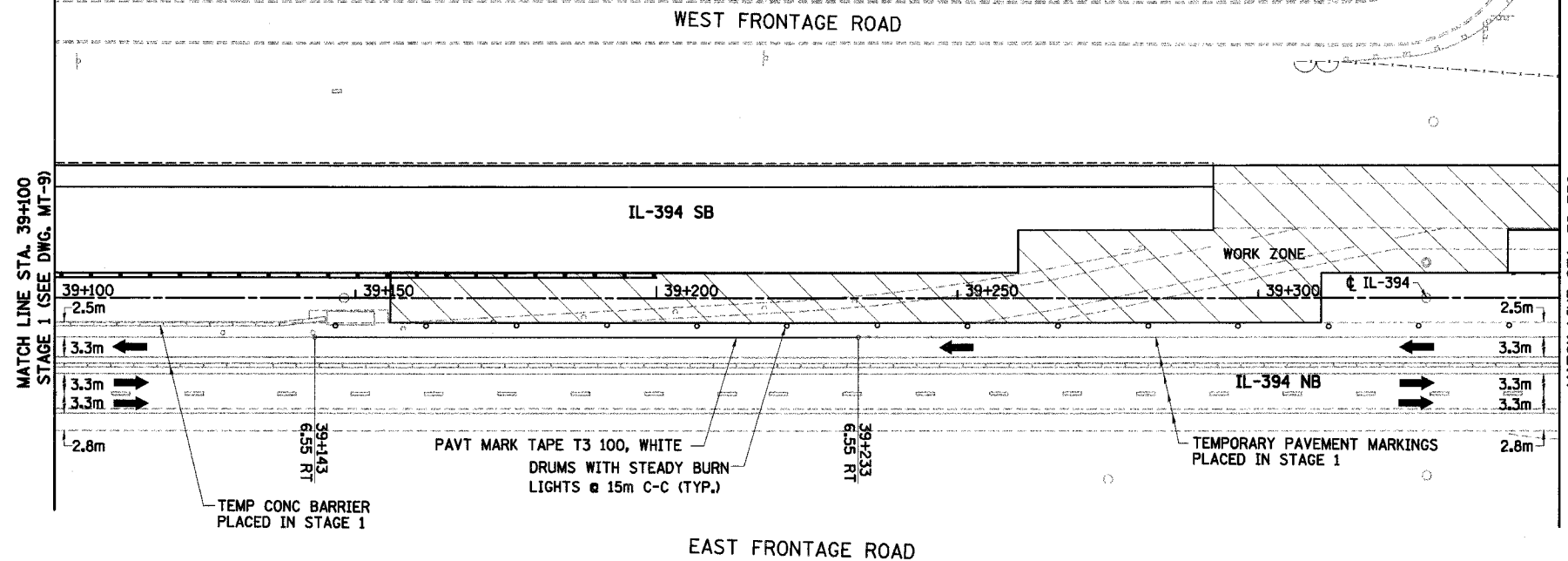
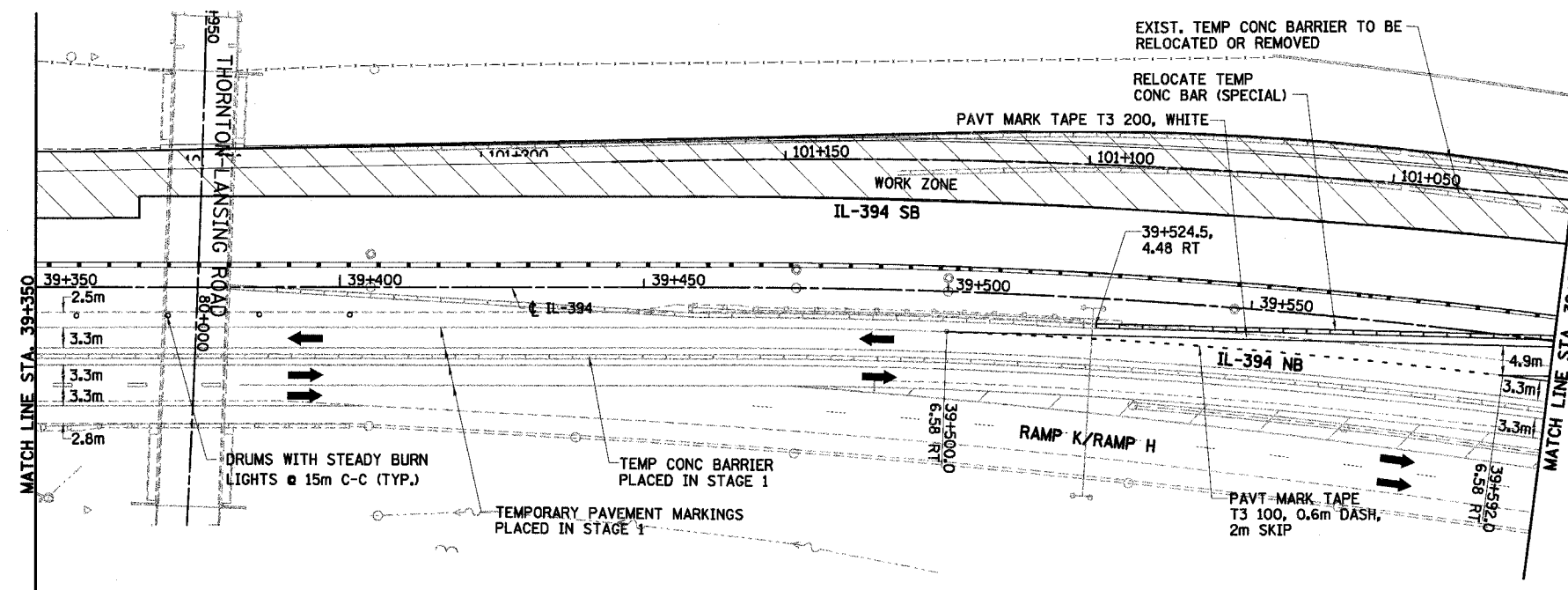


F.A.I. RTE	SECTION	COUNTY	TOTAL SHEETS NO.	SHEET NO.
80/94		COOK	870	95
STA. 39+100		TO STA. 39+600		
FED ROAD DIST. NO.		ILLINOIS FED. AID PROJECT		

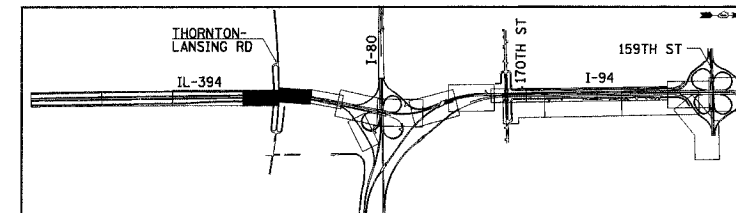


TEMPORARY PAVEMENT MARKINGS BETWEEN STA. 37+650 TO 39+100 WERE PLACED IN STAGE 1. (SEE DWG MT-7 TO MT-9).



LEGEND

- WORK ZONE
- TEMPORARY PAVEMENT
- TRAFFIC DIRECTION
- LANE CLOSURE
- DRUMS WITH STEADY BURN LIGHTS
- VERTICAL PANELS
- TYPE III BARRICADE WITH 2 FLASHING LIGHTS



REVISIONS	
NAME	DATE

MT-21

ILLINOIS DEPARTMENT OF TRANSPORTATION
 I-94 EAST BOUND / IL 394 SOUTH BOUND
 MAINTENANCE OF TRAFFIC
 IL-394 / RAMP E
 STAGE 2
 STA. 39+100 TO STA. 39+600

HORIZ SCALE: 1:500
 VERT SCALE: NONE
 DATE: JULY 18, 2005

DRAWN BY: STS
 CHECKED BY: JES

HNTB