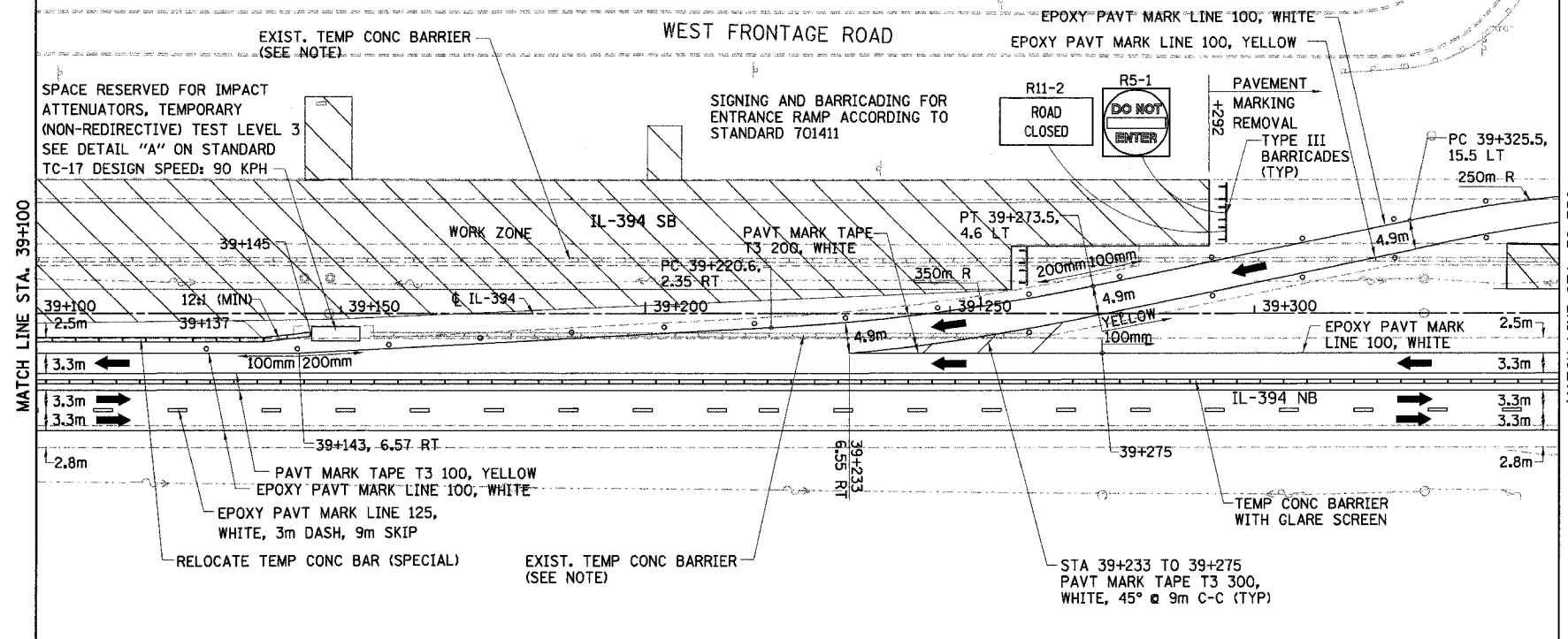


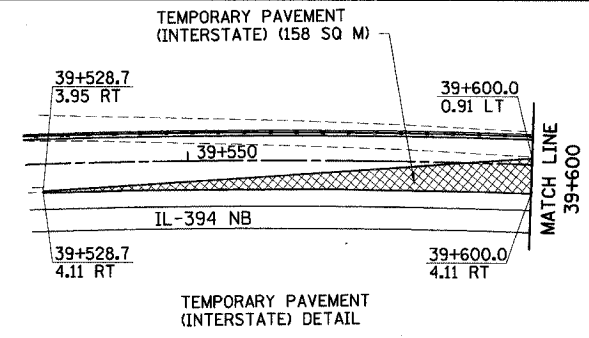
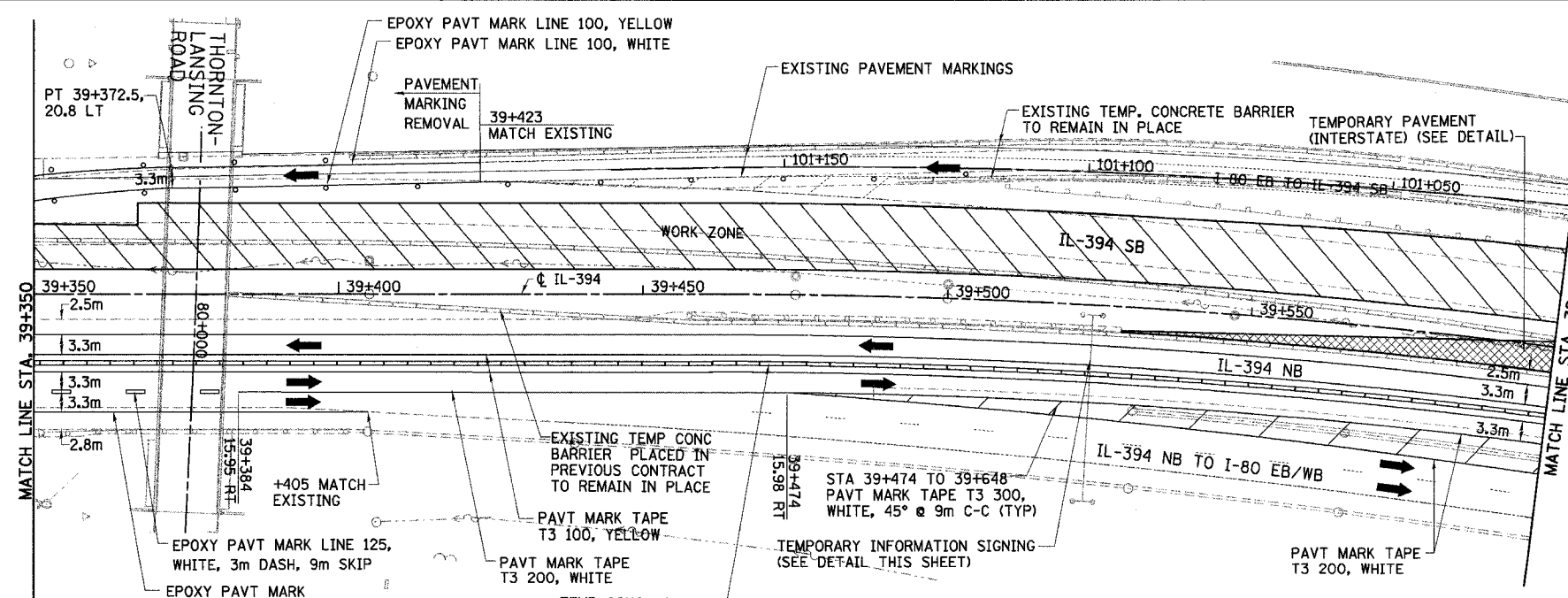
F.A.I. RTE	SECTION	COUNTY	TOTAL SHEETS	SHEET NO.
80/94	*	COOK	870	84
STA. 39+100		TO STA. 39+600		
FED ROAD DIST. NO.		ILLINOIS FED. AID PROJECT		



NOTE:
 AVAILABLE EXISTING TEMPORARY CONCRETE BARRIER SHALL BE USED FOR THE STAGE CONFIGURATION SHOWN AND PAID FOR AS RELOCATE TEMPORARY CONCRETE BARRIER (SPECIAL) (M704002), WHERE THERE IS A SHORTAGE, TEMPORARY CONCRETE BARRIER (M7040100) SHALL BE USED (SEE DWG. MT-2 FOR TEMPORARY CONCRETE BARRIER SCHEDULE)

GLARE SCREEN SHALL BE PAID SEPARATELY AS MODULAR GLARE SCREEN SYSTEM.

MONO-DIRECTIONAL PRISMATIC REFLECTORS SHALL BE PLACED ON EACH SIDE OF WALL AS SHOWN IN MAINTENANCE OF TRAFFIC TYPICAL SECTIONS.



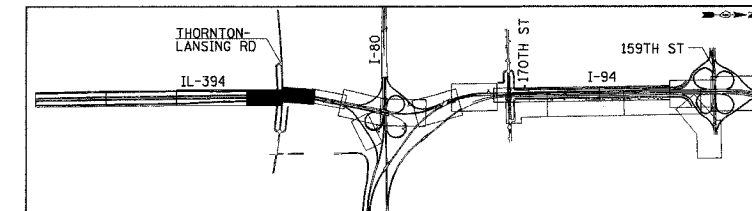
EXISTING OVERHEAD SIGN STATION 39+524



TEMPORARY INFORMATION SIGNING

LEGEND

	WORK ZONE		DRUMS WITH STEADY BURN LIGHTS
	TEMPORARY PAVEMENT		VERTICAL PANELS
	TRAFFIC DIRECTION		TYPE III BARRICADE WITH 2 FLASHING LIGHTS
	LANE CLOSURE		



REVISIONS	
NAME	DATE

ILLINOIS DEPARTMENT OF TRANSPORTATION I-94 EAST BOUND / IL 394 SOUTH BOUND

MAINTENANCE OF TRAFFIC
 IL-394 - STAGE 1
 STA. 39+100 TO STA. 39+600

HORIZ SCALE: 1:500
 VERT SCALE: NONE
 DATE: JULY 18, 2005

DRAWN BY: STS
 CHECKED BY: JES

HNTB