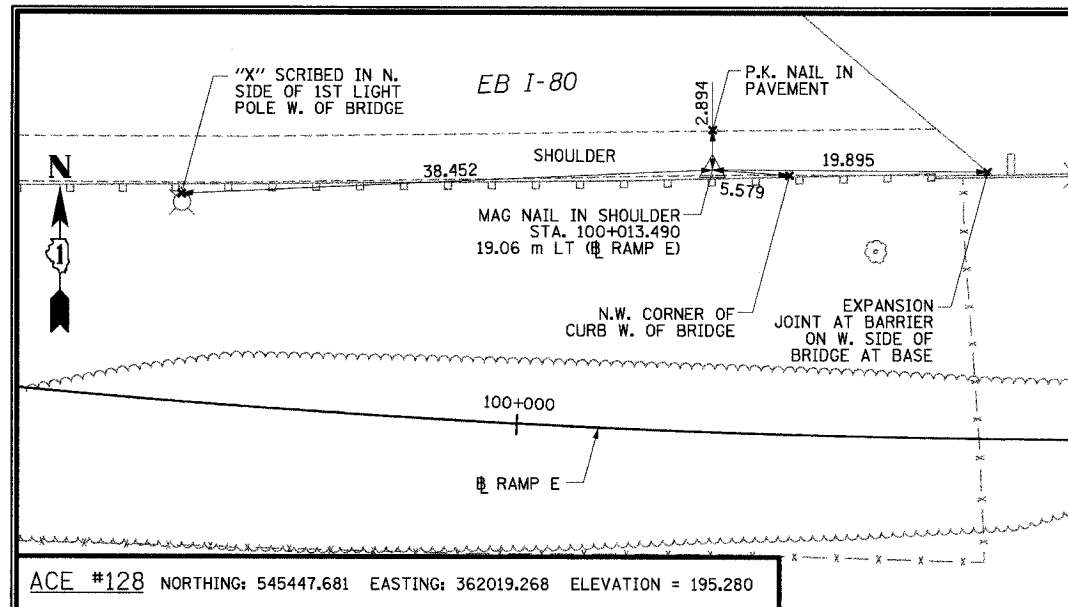
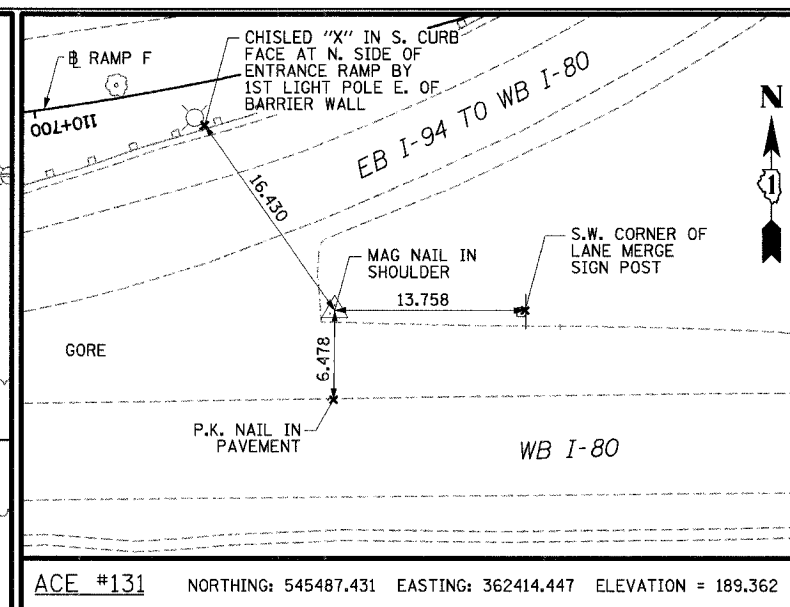


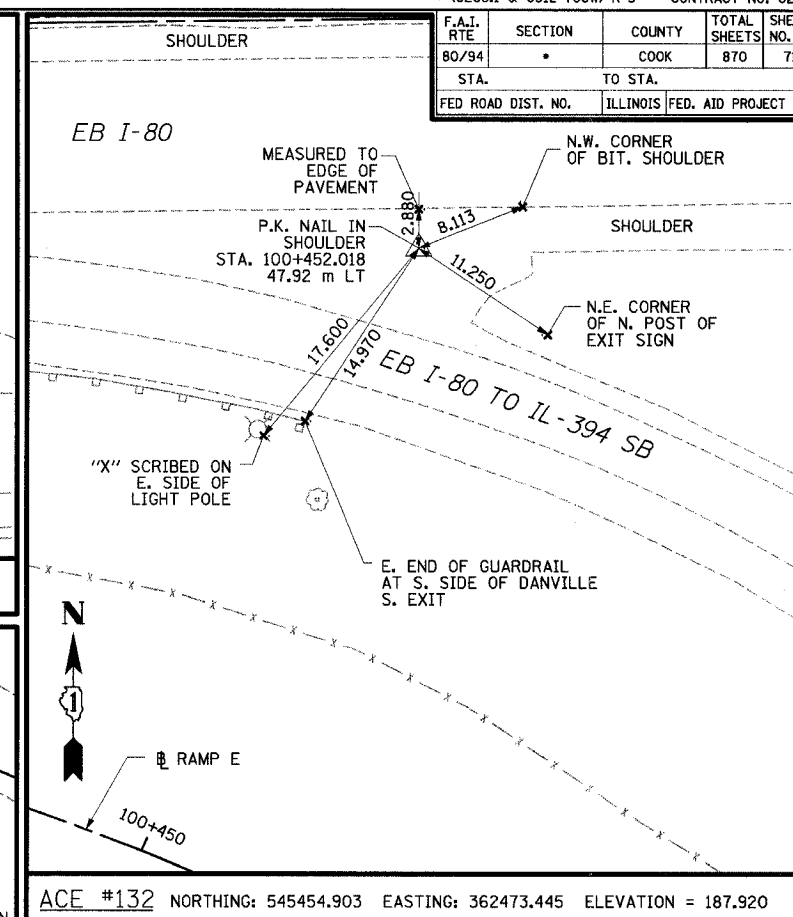
F.A.I. RTE	SECTION	COUNTY	TOTAL SHEETS NO.	SHEET NO.
80/94	*	COOK	870	71
STA.		TO STA.		
FED ROAD DIST. NO.		ILLINOIS FED. AID PROJECT		



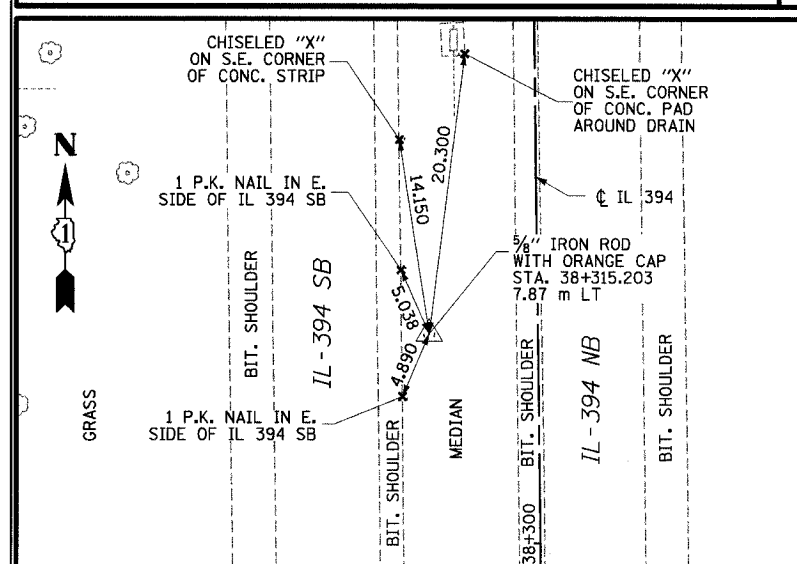
ACE #128 NORTHING: 545447.681 EASTING: 362019.268 ELEVATION = 195.280



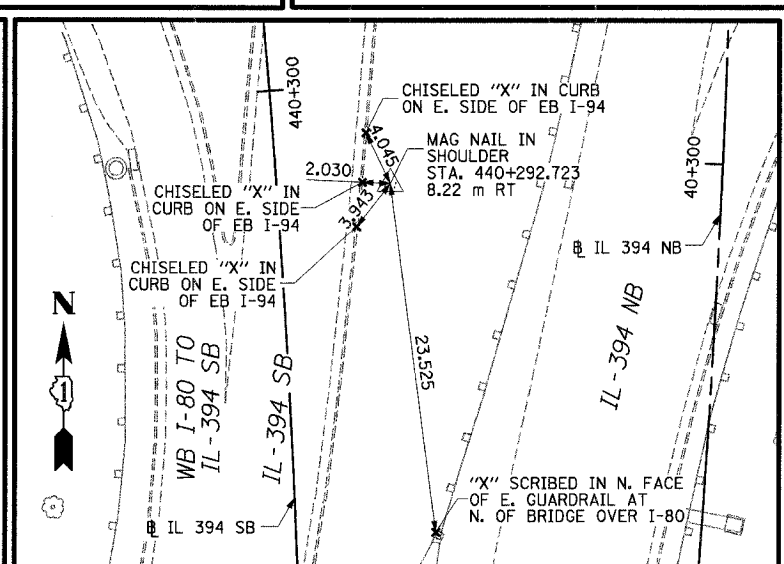
ACE #131 NORTHING: 545487.431 EASTING: 362414.447 ELEVATION = 189.362



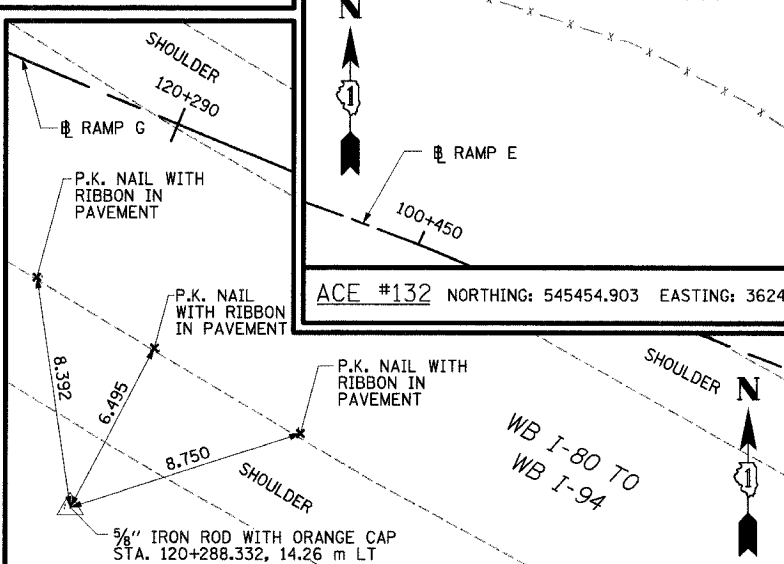
ACE #132 NORTHING: 545454.903 EASTING: 362473.445 ELEVATION = 187.920



ACE #173 NORTHING: 543610.868 EASTING: 362538.061 ELEVATION = 188.686

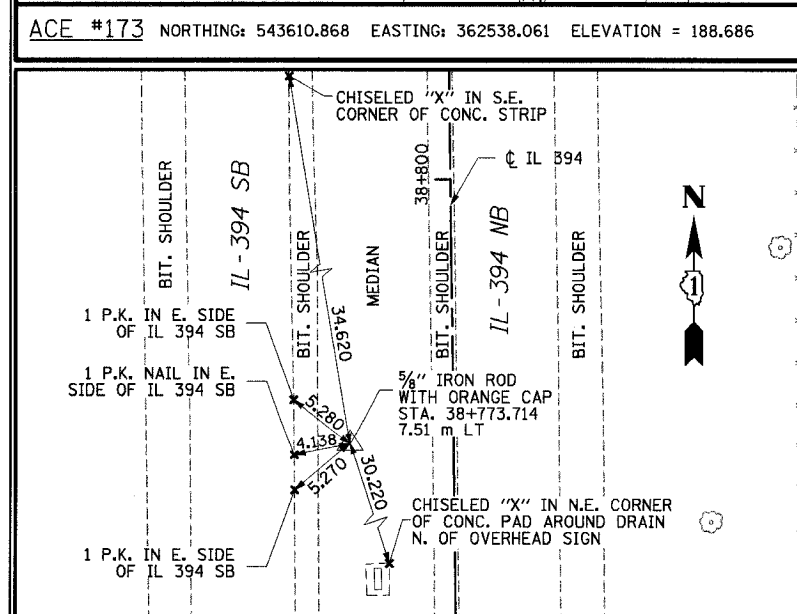


ACE #134 NORTHING: 545573.598 EASTING: 362671.837 ELEVATION = 189.826

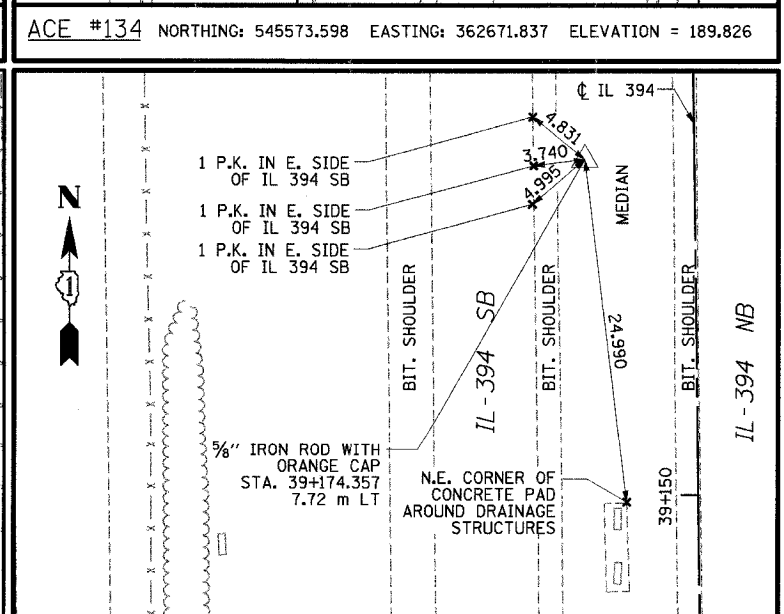


ACE #136 NORTHING: 545577.549 EASTING: 363061.560 ELEVATION = 183.666

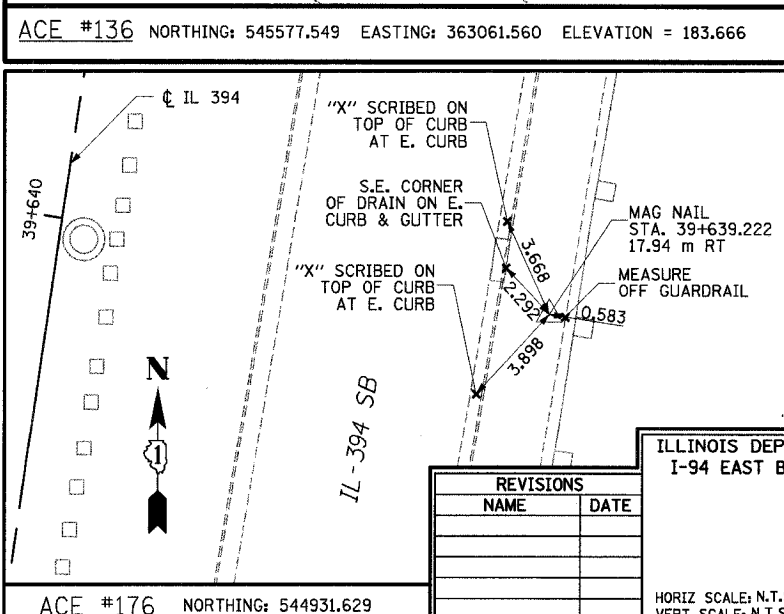
- NOTES:
1. ALL MEASUREMENTS ARE IN METERS (m) UNLESS OTHERWISE NOTED.
 2. ILLINOIS EAST ZONE STATE PLANE COORDINATES (NAD 83, 1986 ADJUSTMENT) ELEVATIONS (NAVD 88)



ACE #174 NORTHING: 544069.342 EASTING: 362532.274 ELEVATION = 189.207



ACE #175 NORTHING: 544469.944 EASTING: 362526.488 ELEVATION = 189.574



ACE #176 NORTHING: 544931.629 EASTING: 362560.341 ELEVATION = 196.364

REVISIONS	
NAME	DATE

ILLINOIS DEPARTMENT OF TRANSPORTATION
I-94 EAST BOUND / IL 394 SOUTH BOUND

TIES

HORIZ SCALE: N.T.S.
VERT SCALE: N.T.S.
DATE: JULY 18, 2005

DRAWN BY: JYMC
CHECKED BY: JES

HNTB