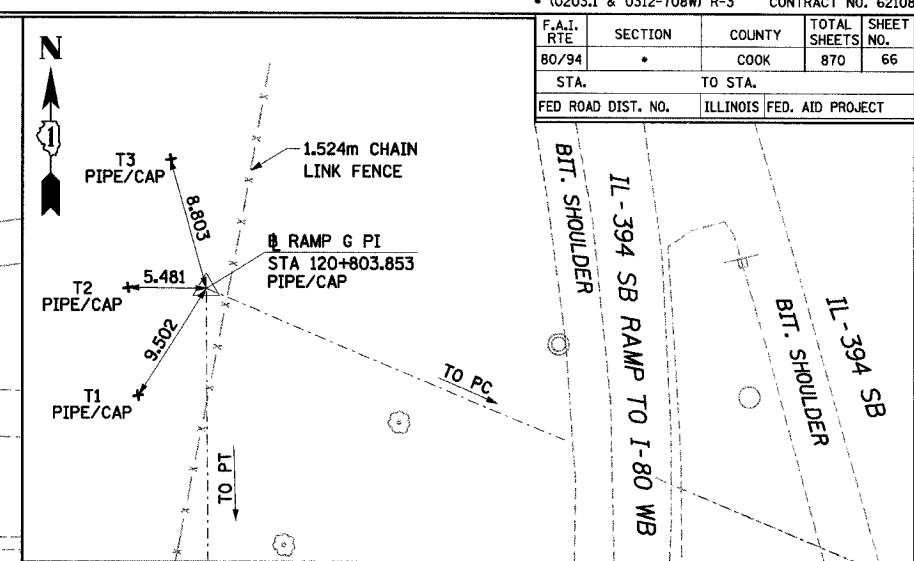
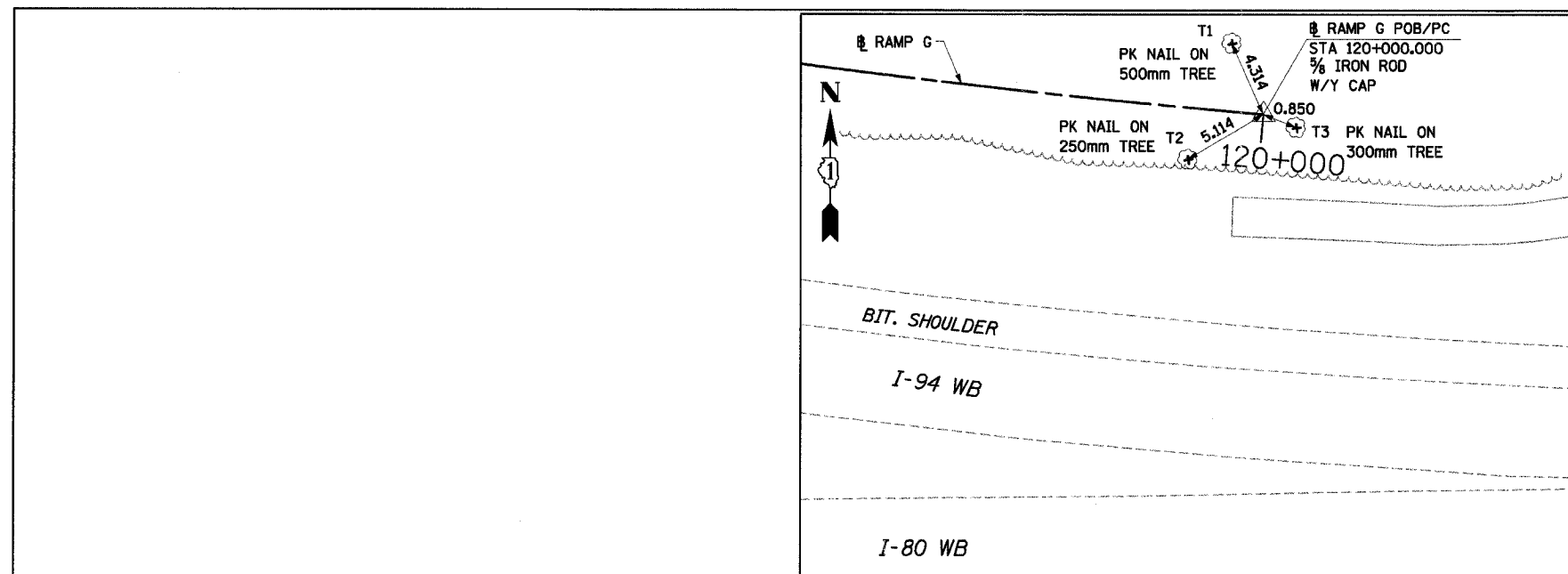
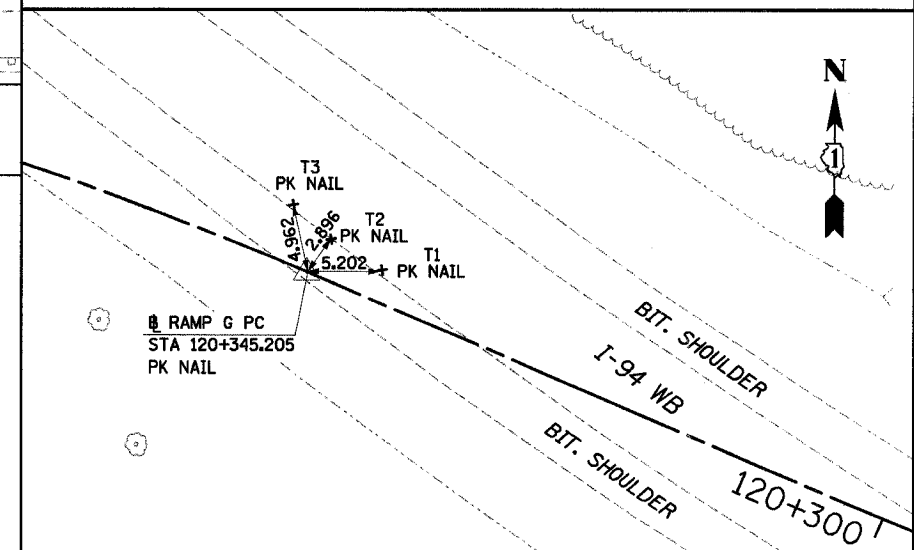
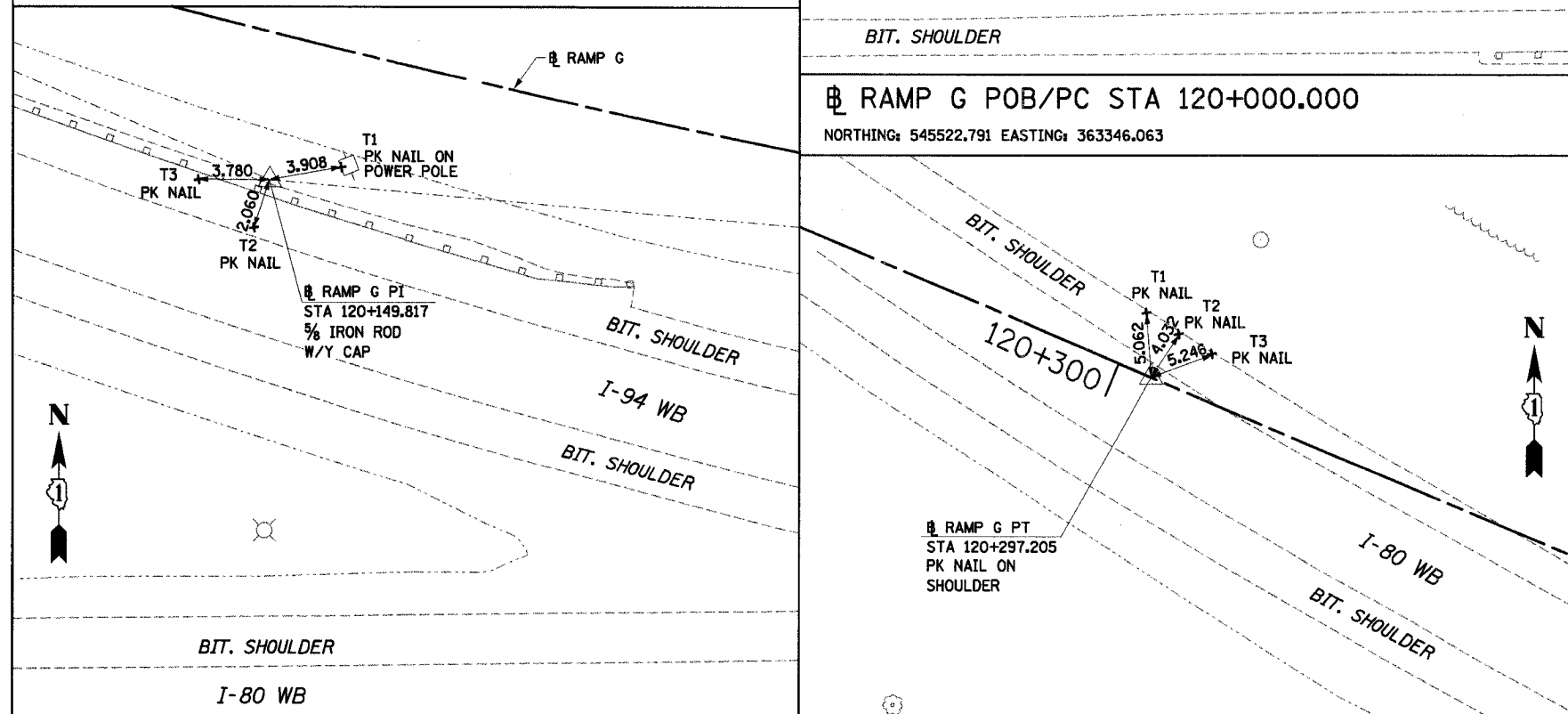


F.A.I. RTE.	SECTION	COUNTY	TOTAL SHEETS	SHEET NO.
80/94	*	COOK	870	66
STA.		TO STA.		
FED ROAD DIST. NO.		ILLINOIS FED. AID PROJECT		



RAMP G PI STA 120+803.853
 NORTHING: 545791.118 EASTING: 362591.997



RAMP G PC STA 120+345.205
 NORTHING: 545791.118 EASTING: 362591.997

RAMP G PI STA 120+149.817
 NORTHING: 545535.900 EASTING: 363196.820

RAMP G PT STA 120+297.205
 NORTHING: 545594.145 EASTING: 363058.789

NOTE:
 ALL MEASUREMENT ARE IN METERS (m)
 UNLESS OTHERWISE NOTED.

REVISIONS	
NAME	DATE

ILLINOIS DEPARTMENT OF TRANSPORTATION
 I-94 EAST BOUND / IL 394 SOUTH BOUND

**ALIGNMENT TIES
 RAMP G**

HORIZ SCALE: N.T.S.
 VERT SCALE:
 DATE: JULY 18, 2005

DRAWN BY: BAJ
 CHECKED BY: JES

HNTB