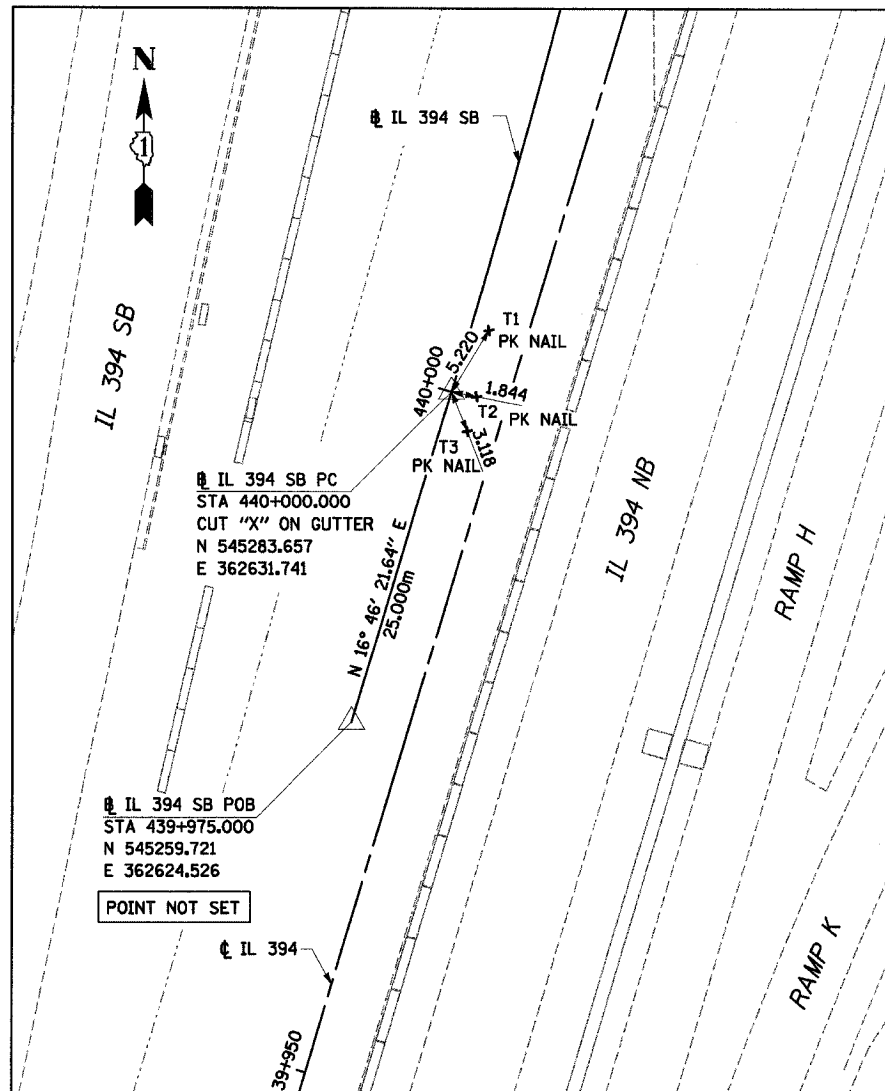
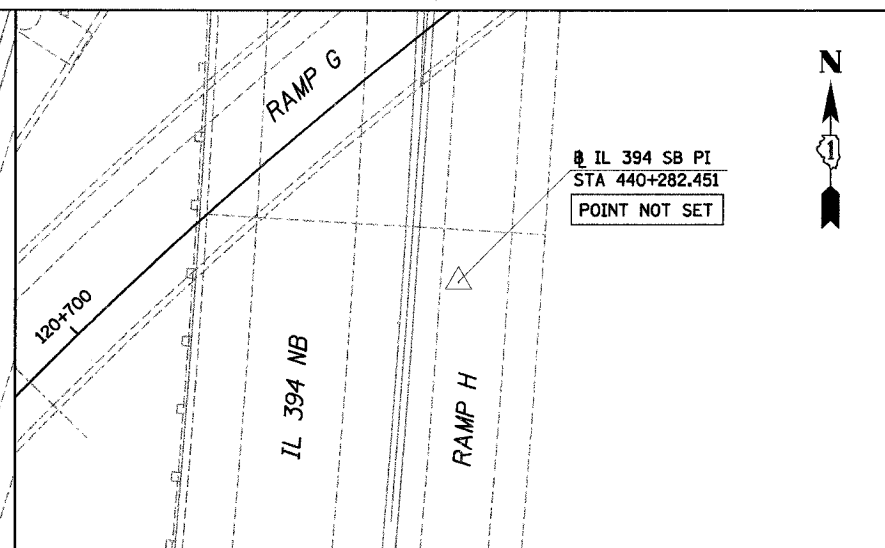


F.A.I. RTE	SECTION	COUNTY	TOTAL SHEETS	SHEET NO.
80/94	.	COOK	870	63
STA.		TO STA.		
FED ROAD DIST. NO.		ILLINOIS FED. AID PROJECT		



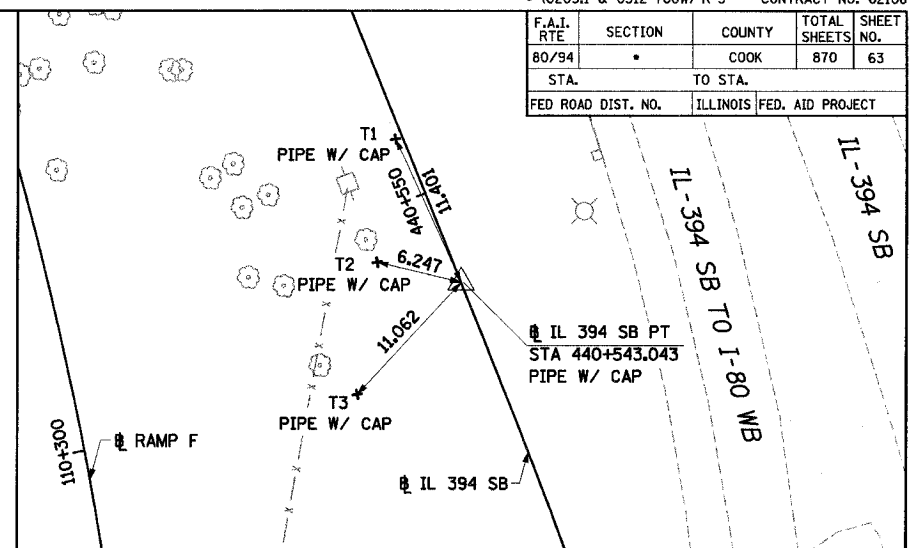
IL 394 SB POB STA 439+975.000  
 NORTHING: 545259.721 EASTING: 362624.526  
 POINT NOT SET

IL 394 SB PC STA 440+000.000  
 NORTHING: 545283.657 EASTING: 362631.741



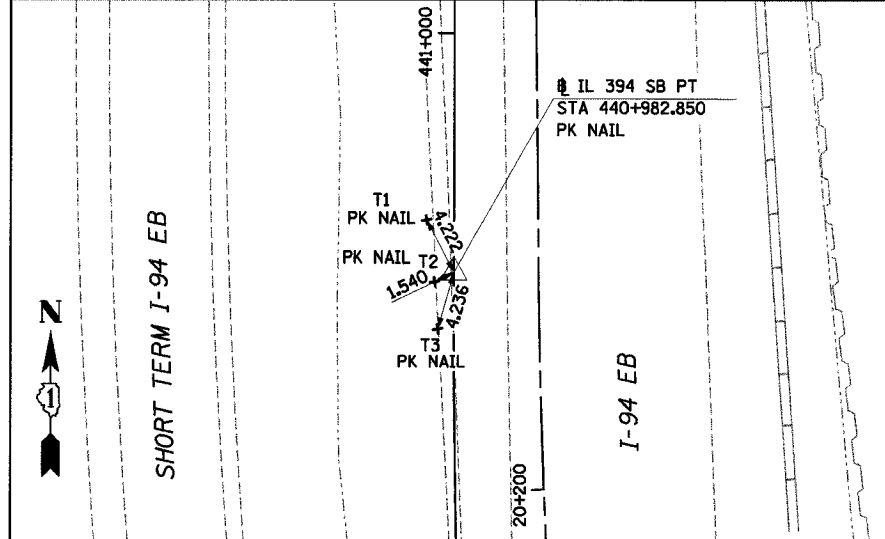
IL 394 SB PI STA 440+282.451  
 NORTHING: 545554.092 EASTING: 362713.249  
 POINT NOT SET

IL 394 SB PT STA 440+543.043  
 NORTHING: 545815.754 EASTING: 362606.893



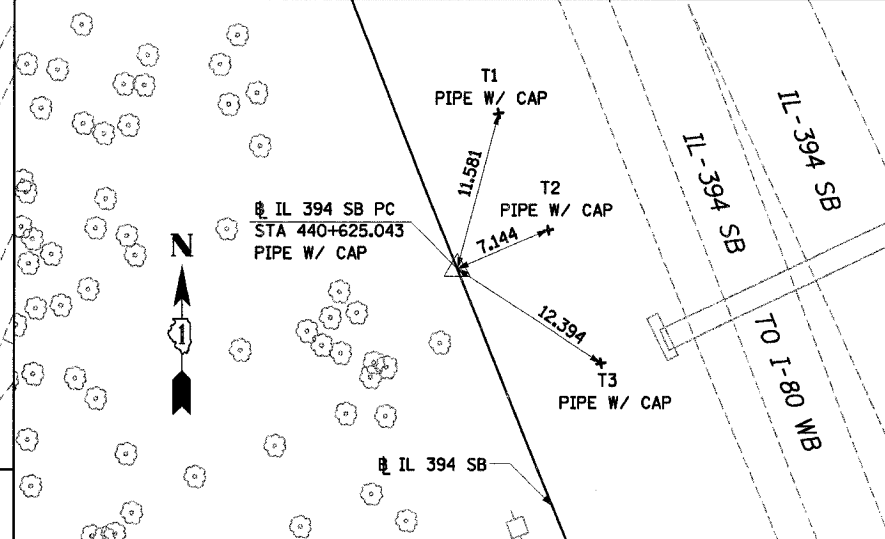
IL 394 SB PI STA 440+806.211  
 NORTHING: 546059.552 EASTING: 362507.799

IL 394 SB PT STA 440+982.850  
 NORTHING: 546240.721 EASTING: 362507.935



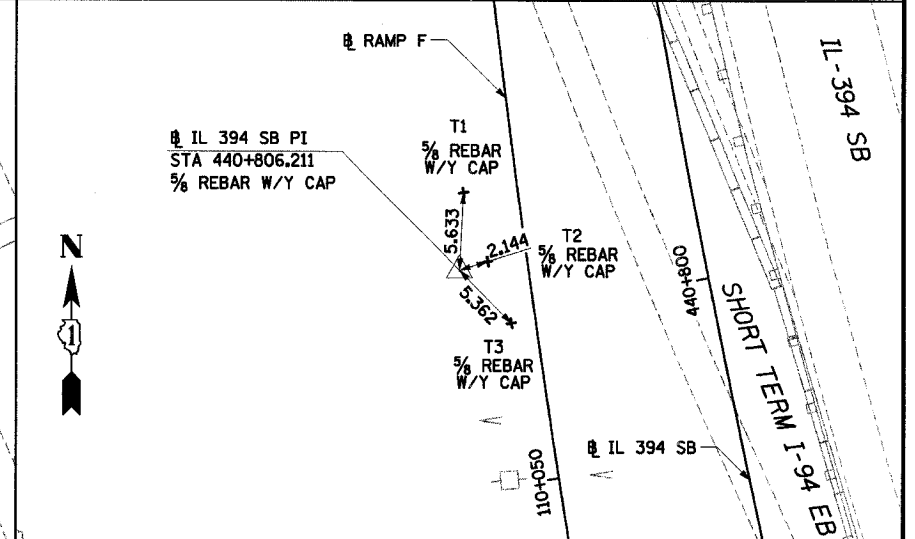
IL 394 SB PT STA 440+982.850  
 NORTHING: 546240.721 EASTING: 362507.935

IL 394 SB POE STA 441+192.309  
 NORTHING: 546450.179 EASTING: 362508.093  
 POINT NOT SET

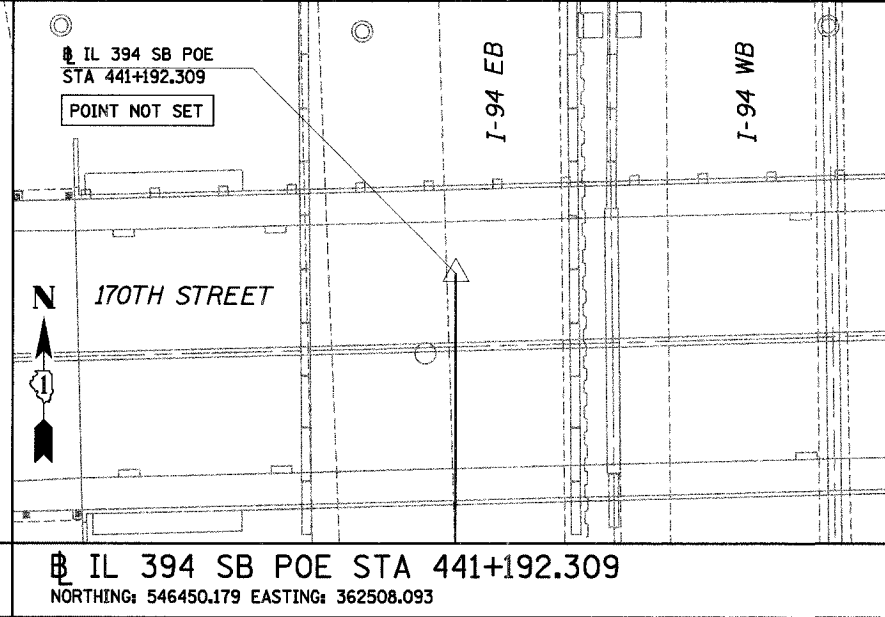
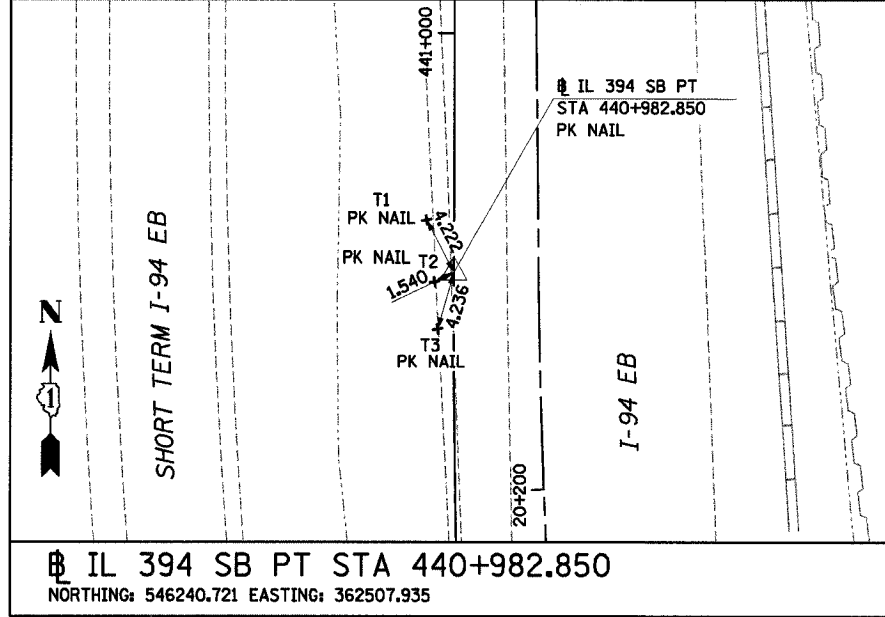


IL 394 SB PC STA 440+625.043  
 NORTHING: 545891.718 EASTING: 362576.017

IL 394 SB PI STA 440+806.211  
 NORTHING: 546059.552 EASTING: 362507.799



IL 394 SB PT STA 440+982.850  
 NORTHING: 546240.721 EASTING: 362507.935



NOTE:  
 ALL MEASUREMENT ARE IN METERS (m)  
 UNLESS OTHERWISE NOTED.

REVISIONS	
NAME	DATE

ILLINOIS DEPARTMENT OF TRANSPORTATION  
 I-94 EAST BOUND / IL 394 SOUTH BOUND

**ALIGNMENT TIES**  
 IL-394 SB

HORIZ SCALE:  
 VERT SCALE:  
 DATE: JULY 18, 2005

DRAWN BY: JYMC  
 CHECKED BY: JES

**HNTB**