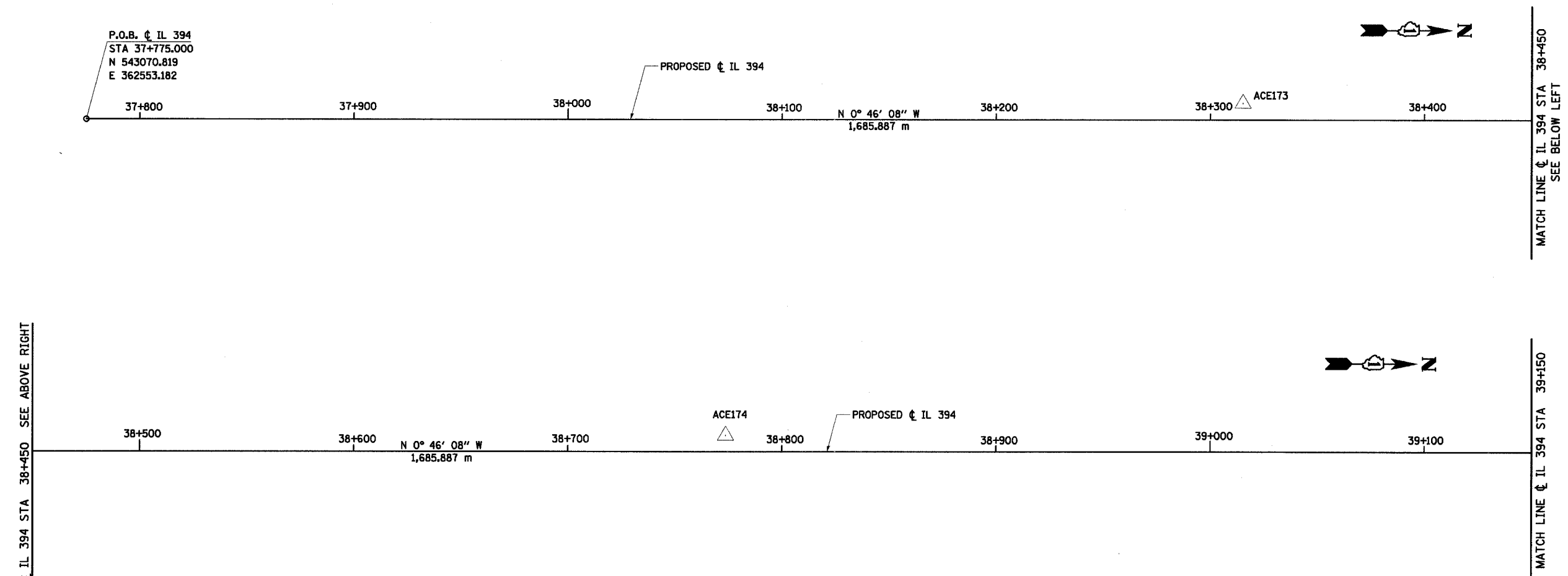


BENCHMARKS			
NO.	DESCRIPTION	NO.	DESCRIPTION
116	CUT BOX ON CRASHWALL SW CORNER OF NW CORNER UNDER I-94 EB APPROXIMATELY MI MARKER 160.18, WB I-80 ELEV = 182.840	225	CHISELED BOX ON SW CORNER OF CONCRETE PAD OF MANHOLE IN CENTER MEDIAN ON IL 394 ±300m SOUTH OF BOX TRUST *C4E SOUTH OF I-80 ±1 MILE ELEV = 188.411
200	CHISELED "X" ON NE BOLT OF LIGHT POLE *DEF2 LOCATED AT SE QUADRANT OF IL 394 AND I-80 RAMP INTERCHANGE ELEV = 184.031	226	CHISELED BOX ON SW CORNER OF CONCRETE PAD OF MANHOLE IN CENTER MEDIAN ON IL 394 ±0.55 MILE SOUTH OF BOX TRUST *C4E SOUTH OF I-80 ELEV = 188.407
216	CHISELED BOX ON NE CORNER OF METAL BASE OF *DEF5 LIGHT POLE LOCATED AT SW QUADRANT OF IL 394 AND I-80 ELEV = 185.034	232	RAILROAD SPIKE IN POWER POLE WITH TRANSFORMER LOCATED IN FRONT OF LANSING MOTEL *1650 THORNTON-LANSING RD. OFF OF FRONTAGE RD. ELEV = 189.862
222	CHISELED BOX ON NE CORNER OF CURB ON SB IL 394 UNDER THORNTON-LANSING ROAD BRIDGE 1.5m NORTH OF NORTH PIER UNDER BRIDGE ELEV = 190.946	301	RR SPIKE IN SW SIDE OF 0.55m TREE ±380m NORTH OF TBM *300 LOCATED ±6m EAST OF SHOULDER WHERE IL-394 NB RAMP MERGES WITH I-94 WB ELEV = 184.726
		309	CHISELED "X" ON LIGHT POLE NE BOLT OF LIGHT POLE *FL7 I-94 EB AND 159TH STREET EB RAMP; MILE MARKER 73.00 ELEV = 181.727
		315	CUT BOX ON FDN OF OVERHEAD SIGN TRUSS (C1) NE CORNER OF EB I-94 APPROX. 262m SOUTH OF 170TH STREET BRIDGE. ELEV = 182.247
		319	SET CUT BOX AT SW WINGWALL AT SE QUADRANT OF VAN DAM RD. AND 159TH ST. ELEV = 184.311

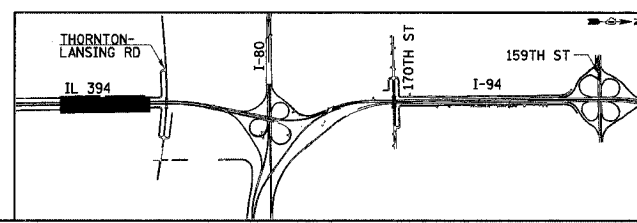
F.A.I. RTE	SECTION	COUNTY	TOTAL SHEETS	SHEET NO.
80/94	*	COOK	870	52
STA. 37+775		TO STA. 39+150		
FED ROAD DIST. NO.		ILLINOIS		FED. AID PROJECT



MATCH LINE CL IL 394 STA 38+450 SEE ABOVE RIGHT

MATCH LINE CL IL 394 STA 39+150 SEE BELOW LEFT

NOTE:
 COORDINATE DATA IS STATE PLANE



REVISIONS	
NAME	DATE

ILLINOIS DEPARTMENT OF TRANSPORTATION
 I-94 EAST BOUND / IL 394 SOUTH BOUND

HORIZONTAL ALIGNMENT

HORIZ SCALE: 1:1000
 VERT SCALE: NONE
 DATE: JULY 18, 2005

DRAWN BY: BAJ
 CHECKED BY: JES

