

12-13-2024 SPECIAL LETTING ITEM 015

STATE OF ILLINOIS  
DEPARTMENT OF TRANSPORTATION

FOR INDEX OF SHEETS, SEE SHEET NO. 3  
FOR SUMMARY OF QUANTITIES, SEE SHEET NO 4-6

TRAFFIC DATA

STRUCTURE NO. 073-0025 & 073-0026  
2024 ADT = 3,400  
11.91% Trucks

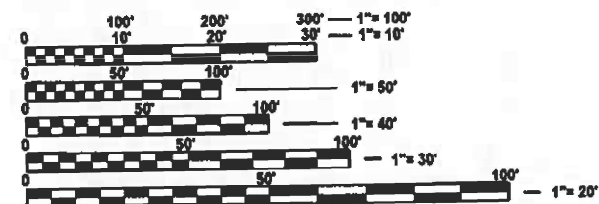
TOWNSHIPS

BEAUCOUP  
PINCKNEYVILLE NO. 6/8

DESIGN DESIGNATION : N/A

COORDINATE SYSTEM : N/A

POSTED SPEED : 55 MPH



FULL SIZE PLANS HAVE BEEN PREPARED USING STANDARD  
ENGINEERING SCALES. REDUCED SIZED PLANS WILL NOT  
CONFORM TO STANDARD SCALES. IN MAKING MEASUREMENTS  
ON REDUCED PLANS, THE ABOVE SCALES MAY BE USED.

J.U.L.I.E.  
JOINT UTILITY LOCATION INFORMATION FOR EXCAVATION  
1-800-892-0123  
OR 811

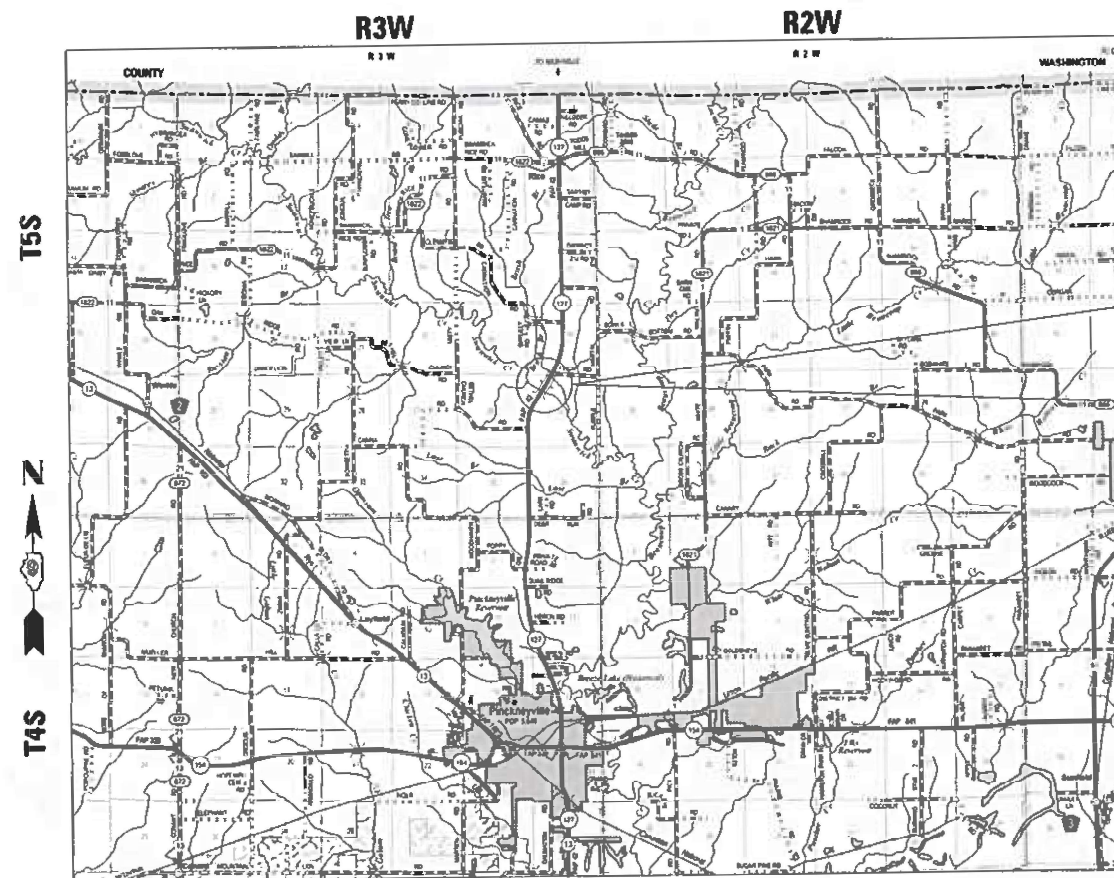
PROJECT ENGINEER EHREN KIRBY  
PROJECT MANAGER DEREK SNIDER

CONTRACT NO. 78A27

PROPOSED  
HIGHWAY PLANS

FAP ROUTE 42 (IL 127)  
SECTION (8-1B,8-1B-1)BRR-1  
BR-U6D3(736)  
BRIDGE REPAIR  
PERRY COUNTY

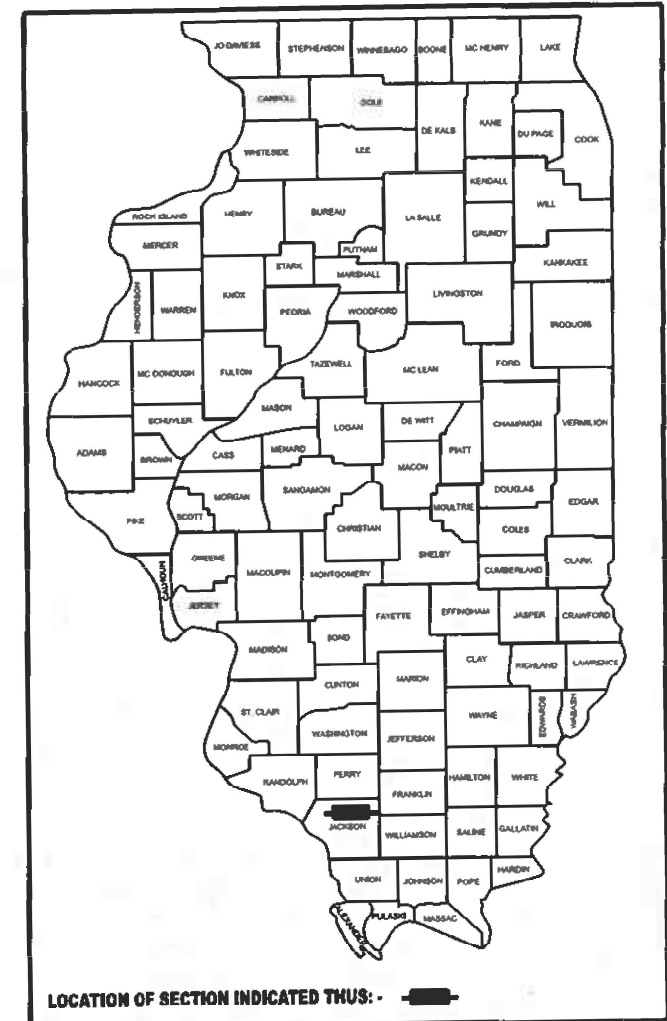
C-99-029-24



GROSS LENGTH = 590 FT. = 0.111 MILE  
NET LENGTH = 590 FT. = 0.111 MILE

F.A.P. RTE.	SECTION	COUNTY	TOTAL SHEETS	SHEET NO.
42	(8-1B,8-1B-1)BRR-1	PERRY	22	1
ILLINOIS CONTRACT NO. 78A27				

D-99-006-24



SN 073-0026

IL 127 OVER SWANWICK CREEK OVERFLOW  
PERRY COUNTY

SN 073-0025

IL 127 OVER SWANWICK CREEK  
PERRY COUNTY

STATE OF ILLINOIS  
DEPARTMENT OF TRANSPORTATION

SUBMITTED August 15 20 24  
Kirk H. Brown REGIONAL ENGINEER  
October 4, 2024  
Scott A. Elk ENGINEER OF DESIGN AND ENVIRONMENT  
October 4, 2024  
James J. Quinn DIRECTOR OF HIGHWAYS PROJECT IMPLEMENTATION 13

PRINTED BY THE AUTHORITY  
OF THE STATE OF ILLINOIS

MODEL: 02-Signature [Sheet]  
FILE NAME: c:\pwworking\illinois.gov\derek.snider\00586417.D978A27 SHA-Cover Sig.dgn

USER NAME	* derek.snider	DESIGNED	-	REVISED	-
		DRAWN	-	REVISED	-
		CHECKED	-	REVISED	-
PLOT DATE	* 7/30/2024	DATE	-	REVISED	-

STATE OF ILLINOIS  
DEPARTMENT OF TRANSPORTATION

SIGNATURE SHEET

SCALE: SHEET OF SHEETS STA. TO STA.

F&P RTE.	SECTION	COUNTY	TOTAL SHEETS	SHEET NO.
42	(8-1B,8-1B-1)BRR-1	PERRY	22	2
CONTRACT NO. 78A27				
ILLINOIS FED. AID PROJECT				

Prepared By: Susan R.  
DISTRICT STUDIES & PLANS ENGINEER

Examined By: Nancy H.  
DISTRICT LAND ACQUISITION ENGINEER

Examined By: C. M.  
DISTRICT PROGRAM DEVELOPMENT ENGINEER

Examined By: R. C.  
DISTRICT OPERATIONS ENGINEER

Examined By: Dan J. M.  
DISTRICT PROJECT IMPLEMENTATION ENGINEER

Examined By: Bernard W.  
DISTRICT CONSTRUCTION ENGINEER

Examined By: A. D.  
DISTRICT MATERIALS ENGINEER

MODEL: GNI [Sheet]  
FILE NAME: c:\pwwork\pwwork\illinois.gov\derek.snider@illinois.gov\d0986417D9xxxx-ShtB-index\_GenNotes.dgn

INDEX OF SHEETS

1	COVER SHEET
2	SIGNATURES
3	GENERAL NOTES, INDEX OF SHEETS, AND STANDARDS
4-6	SUMMARY OF QUANTITIES
7-II	SN 073-0025 REPAIR DETAILS
12-16	SN 073-0025 & SN 073-0026 DETAIL SHEETS
17-22	SN 073-0026 REPAIR DETAILS

GENERAL NOTES

FACTORS USED FOR ESTIMATING PLAN QUANTITIES ARE AS FOLLOWS AND SHALL NOT BE USED FOR THE BASIS OF FINAL QUANTITIES:  
ALL HOT MIX ASPHALT2.016 TONS/CU YD

COMMITMENTS: NONE

MIX REQUIREMENTS

Location(s):	Hot-Mix Asphalt Surface Course (IL-127)
Mixture Use(s):	Hot-Mix Asphalt Surface Course, Mix C, N70
PG:	PG64-22
Design Air Voids:	4.0%, 70 Gyration Design
Mixture Composition:(Gradation Mixture)	IL-9.5mm
Friction Aggregate:	Mix C
Mixture Weight:	112 lbs/sq yd/in
Quality Management Program:	QC/QA
Sublot Size:	3000 tons
Material Transfer Device (Required?):	No

STANDARDS

000001-08	STANDARD SYMBOLS, ABBREVIATIONS AND PATTERNS
001001-02	AREAS OF REINFORCEMENT BARS
701001-02	OFF-ROAD OPERATIONS, 2L, 2W, MORE THAN 15' AWAY
701006-05	OFF-ROAD OPERATIONS, 2L, 2W, 15' to 24" FROM PAVEMENT EDGE
701201-05	LANE CLOSURE, 2L, 2W DAY ONLY
701321-18	LANE CLOSURE, 2L, 2W, BRIDGE REPAIR WITH BARRIER
701326-04	LANE CLOSURE, 2L, 2W, PAVEMENT WIDENING, FOR SPEEDS ≥ 45 MPH
701901-09	TRAFFIC CONTROL DEVICES
704001-08	TEMPORARY CONCRETE BARRIER
780001-05	TYPICAL PAVEMENT MARKINGS
862001-01	UNINTERRUPTABLE POWER SUPPLY (UPS)
001006	DECIMAL OF AN INCH AND OF A FOOT
420001-10	PAVEMENT JOINTS
631031-18	TRAFFIC BARRIER TERMINAL, TYPE 6
643001-02	SAND MODULE IMPACT ATTENUATORS
782006-01	GUARDRAIL AND BARRIER WALL REFLECTOR MOUNTING DETAILS

REV - MS

	USER NAME = derek.snider	DESIGNED -	REVISED -	STATE OF ILLINOIS DEPARTMENT OF TRANSPORTATION	IN DEPT OF SHIET \$G EN RAL NOT ES JAN DR DS		F.A.P RTE.	SECTION	COUNTY	TOTAL SHEETS	SHEET NO.
		DRAWN -	REVISED -				42	(8-1B,8-1B-1)BRR-1	PERRY	22	3
	PLOT DATE = 8/6/2024	CHECKED -	REVISED -				CONTRACT NO. 78A27				
		DATE -	REVISED -	SCALE:		SHEET	OF	SHEETS	STA.	TO STA.	ILLINOIS FED. AID PROJECT

SUMMARY OF QUANTITIES

COUNTY:	PERRY CO	PERRY CO
ROUTE:	FAP 42 (IL 127)	FAP 42 (IL 127)
FUNDING:	80% FEDERAL 20% STATE	80% FEDERAL 20% STATE
LOCATION:	BRIDGE	BRIDGE
TOTAL QUANTITY	SN 073-0025	SN 073-0026
	0013	0013

CODE NUMBER	ITEM DESCRIPTION	UNIT	TOTAL QUANTITY		
35400500	PORTLAND CEMENT CONCRETE BASE COURSE WIDENING 10"	SQ YD	373	184	189
40600290	BITUMINOUS MATERIALS (TACK COAT)	POUND	240	120	120
40604052	HOT-MIX ASPHALT SURFACE COURSE, IL-9.5, MIX "C", N70	TON	60	30	30
44000157	HOT-MIX ASPHALT SURFACE REMOVAL, 2"	SQ YD	536	268	268
44004250	PAVED SHOULDER REMOVAL	SQ YD	373	184	189
50102400	CONCRETE REMOVAL	CU YD	28.9	14.3	14.6
50300255	CONCRETE SUPERSTRUCTURE	CU YD	29.1	14.3	14.8
50300260	BRIDGE DECK GROOVING	SQ YD	1,689	639	1,050
50300300	PROTECTIVE COAT	SQ YD	1,816	693	1123
50500405	FURNISHING AND ERECTING STRUCTURAL STEEL	POUND	6,400	3,200	3,200
50500505	STUD SHEAR CONNECTORS	EACH	216	108	108
50800205	REINFORCEMENT BARS, EPOXY COATED	POUND	2,380	1,190	1,190
50800515	BAR SPLICERS	EACH	48	24	24
52000110	PREFORMED JOINT STRIP SEAL	FOOT	184	92	92
59000200	EPOXY CRACK INJECTION	FOOT	58	0	58

REV - MS

MODEL: SQQ 1 (Sheet)  
FILE NAME: c:\paw\_work\paw\illinois.gov\_derek.snider\illinois.gov\0986417\09xxxx-ShtC-SqQ.dgn

	USER NAME = derek.snider	DESIGNED -	REVISED -	STATE OF ILLINOIS DEPARTMENT OF TRANSPORTATION	SUMMARY OF QUANTITIES			F.A.P RTE.	SECTION	COUNTY	TOTAL SHEETS	SHEET NO.
		DRAWN -	REVISED -					42	(8-1B,8-1B-1)BRR-1	PERRY	22	4
		CHECKED -	REVISED -		CONTRACT NO. 78A27							
	PLOT DATE = 8/13/2024	DATE -	REVISED -		SCALE:	SHEET	OF	SHEETS	STA.	TO STA.	ILLINOIS   FED. AID PROJECT	



SUMMARY OF QUANTITIES - CONT

CODE NUMBER	ITEM DESCRIPTION	UNIT	TOTAL QUANTITY	COUNTY:	PERRY CO	PERRY CO
				ROUTE:	FAP 42 (IL 127)	FAP 42 (IL 127)
				FUNDING:	80% FEDERAL 20% STATE	80% FEDERAL 20% STATE
				LOCATION:	BRIDGE	BRIDGE
					SN 073-0025	SN 073-0026
					0013	0013
*	63302700	REMOVE AND REERECT TRAFFIC BARRIER TERMINALS, TYPE 6	EACH	8	4	4
	67000400	ENGINEER'S FIELD OFFICE, TYPE A	CAL MO	8	4	4
	67100100	MOBILIZATION	L SUM	1	0.5	0.5
	70100405	TRAFFIC CONTROL AND PROTECTION, STANDARD 701321	EACH	2	1	1
	70100450	TRAFFIC CONTROL AND PROTECTION, STANDARD 701201	L SUM	1	0.5	0.5
	70100500	TRAFFIC CONTROL AND PROTECTION, STANDARD 701326	L SUM	1	0.5	0.5
	70103815	TRAFFIC CONTROL SURVEILLANCE	CAL DA	12	6	6
	70106500	TEMPORARY BRIDGE TRAFFIC SIGNALS	EACH	2	1	1
	70106700	TEMPORARY RUMBLE STRIPS	EACH	12	6	6
	70107025	CHANGEABLE MESSAGE SIGN	CAL DA	56	28	28
	70300100	SHORT TERM PAVEMENT MARKING	FOOT	134	63	71
	70300150	SHORT TERM PAVEMENT MARKING REMOVAL	SQ FT	45	21	24
	70300221	TEMPORARY PAVEMENT MARKING - LINE 4"- PAINT	FOOT	1,549	671	878
	70400100	TEMPORARY CONCRETE BARRIER	FOOT	787.5	337.5	450.0

\* SPECIALTY ITEM

REV - MS

MODEL: SQQ 2 (Sheet)  
FILE NAME: c:\paw\work\paw\illinois.gov\derrek.snider@illinois.gov\0986417\09xxxx-ShtC-SqO.dgn

	USER NAME = derek.snider	DESIGNED -	REVISED -	STATE OF ILLINOIS DEPARTMENT OF TRANSPORTATION	SUMMARY OF QUANTITIES			F.A.P RTE.	SECTION	COUNTY	TOTAL SHEETS	SHEET NO.
		DRAWN -	REVISED -					42	(8-1B,8-1B-1)BRR-1	PERRY	22	5
		CHECKED -	REVISED -		CONTRACT NO. 78A27							
	PLOT DATE = 8/13/2024	DATE -	REVISED -		SCALE:	SHEET	OF	SHEETS	STA.	TO STA.	ILLINOIS   FED. AID PROJECT	

## SUMMARY OF QUANTITIES - CONT

COUNTY:	PERRY CO	PERRY CO
ROUTE:	FAP 42 (IL 127)	FAP 42 (IL 127)
FUNDING:	80% FEDERAL 20% STATE	80% FEDERAL 20% STATE
LOCATION:	BRIDGE	BRIDGE
TOTAL QUANTITY	SN 073-0025	SN 073-0026
	0013	0013

CODE NUMBER	ITEM DESCRIPTION	UNIT	TOTAL QUANTITY	SN 073-0025	SN 073-0026
				0013	0013
70400200	RELOCATE TEMPORARY CONCRETE BARRIER	FOOT	737.5	312.5	425.0
70600250	IMPACT ATTENUATORS, TEMPORARY (NON- REDIRECTIVE), TEST LEVEL 3	EACH	4	2	2
70600350	IMPACT ATTENUATORS, RELOCATE (NON- REDIRECTIVE), TEST LEVEL 3	EACH	4	2	2
78001110	PAINT PAVEMENT MARKING - LINE 4"	FOOT	1,549	671	878
78300200	RAISED REFLECTIVE PAVEMENT MARKER REMOVAL	EACH	3	2	1
78300201	PAVEMENT MARKING REMOVAL - GRINDING	SQ FT	886	396	490
86200300	UNINTERRUPTABLE POWER SUPPLY, EXTENDED	EACH	2	1	1
Z0001800	APPROACH SLAB REPAIR (PARTIAL DEPTH)	SQ YD	11	11	0
Z0001903	STRUCTURAL STEEL REMOVAL	POUND	6,400	3,200	3,200
Z0012146	BRIDGE DECK SCARIFICATION 2 3/4"	SQ YD	1,771	671	1,100
Z0012166	BRIDGE DECK MICROSILICA CONCRETE OVERLAY 2 3/4"	SQ YD	1,771	671	1,100
Z0012754	STRUCTURAL REPAIR OF CONCRETE (DEPTH EQUAL TO OR LESS THAN 5 INCHES)	SQ FT	165	9	156
Z0012755	STRUCTURAL REPAIR OF CONCRETE (DEPTH GREATER THAN 5 INCHES)	SQ FT	43	34	9
Z0016002	DECK SLAB REPAIR (FULL DEPTH, TYPE II)	SQ YD	20	0	20

\* SPECIALTY ITEM

REV - MS

USER NAME = derek.snider	DESIGNED -	REVISED -	STATE OF ILLINOIS DEPARTMENT OF TRANSPORTATION	SUMMARY OF QUANTITIES				F.A.P RTE.	SECTION	COUNTY	TOTAL SHEETS	SHEET NO.
	DRAWN -	REVISED -						42	(8-1B,8-1B-1)BRR-1	PERRY	22	6
	CHECKED -	REVISED -		CONTRACT NO. 78A27								
PLOT DATE = 8/13/2024	DATE -	REVISED -		SCALE:	SHEET	OF	SHEETS	STA.	TO STA.			

MODEL: SOQ 3 [Sheet]  
FILE NAME: c:\pw\work\widot\illinois.gov\_derek.snide@illinois.gov\id09xxxx-ShtC-SoQ.dgn

GENERAL NOTES

Reinforcement bars designated (E) shall be epoxy coated.

Prior to pouring the new concrete deck, all heavy or loose rust, loose mill scale, and other loose or potentially detrimental foreign material shall be removed from the surfaces in contact with concrete. Tightly adhered paint may remain unless otherwise noted. Removal shall be accomplished by methods that will not damage the steel and the cost will be included in the pay item covering removal of the existing concrete.

Plan dimensions and details relative to the existing structure have been taken from existing plans and are subject to nominal construction variations. The Contractor shall field verify existing dimensions and details affecting new construction and make necessary approved adjustments prior to construction or ordering of materials. Such variations shall not be cause for additional compensation for a change in scope of the work, however, the Contractor will be paid for the quantity actually furnished at the unit price bid for the work.

Existing reinforcement bars extending into the removal area shall be cleaned, straightened and incorporated into the new construction. Any reinforcement bars that are damaged during concrete removal shall be replaced with an approved bar splicer or anchorage system. Cost included with Concrete Removal.

Joint openings shall be adjusted according to Article 520.04 of the Std. Specs. when the deck is poured at an ambient temperature other than 50°F.

All structural steel shall conform to AASHTO Classification M-270 Gr. 36, unless otherwise noted.

All new structural steel and bearing assembly shall be hot-dip galvanized. See special Provisions for "Hot Dip Galvanizing for Structural Steel"

Existing structural steel that will be in contact with new structural steel shall be cleaned and painted prior to erection as required by the Special Provision "Cleaning and Painting Contact Surface Areas of Existing Steel Structures".

Protective Coat shall be applied to all new concrete superstructure and all new concrete overlays as specified in Article 503.19 of Standard Specifications.

Fasteners shall be ASTM F 3125 Type 1. Fasteners shall be hot dipped galvanized. See Special Provisions for "Hot Dip Galvanizing for Structural Steel." Diaphragm connection bolts shall be 3/4" diameter, holes 15/16" diameter, unless otherwise noted. Two hardened washers shall be required at diaphragm connections.

Removal of existing diaphragms to be paid for as Structural Steel Removal.

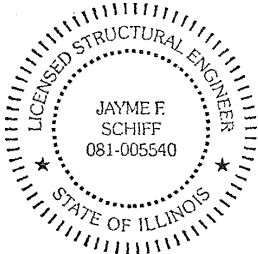
New diaphragms and associated hardware to be paid for as Furnishing and Erecting Structural Steel.

TOTAL BILL OF MATERIAL

ITEM	UNIT	QUANTITY
HMA Surface Course, IL-9.5, Mix "C", N70	Ton	30
HMA Surface Removal 2"	Sq. Yd.	268
Portland Cement Concrete Base Course Widening, 10"	Sq. Yd.	184
Bituminous Material (Tack Coat)	Pound	120
Approch Slab Repair (Partial Depth)	Sq. Yd.	11
Bar Splicers	Each	24
Concrete Superstructure	Cu. Yd.	14.3
Concrete Removal	Cu. Yd.	14.3
Reinforcement Bars, Epoxy Coated	Pound	1190
Preformed Joint Strip Seal	Foot	92
Structural Repair of Concrete (Depth ≤ 5")	Sq Ft	9
Structural Repair of Concrete (Depth ≥ 5")	Sq Ft	34
Protective Coat	Sq. Yd.	693
Bridge Deck Scarification 2 3/4"	Sq Yd.	671
Bridge Deck Microsilica Concrete Overlay 2 3/4"	Sq Yd.	671
Bridge Deck Grooving	Sq Yd.	639
Structural Steel Removal	Pound	3200
Furnishing and Erecting Structural Steel	Pound	3200
Stud Sheer Connectors	Each	108

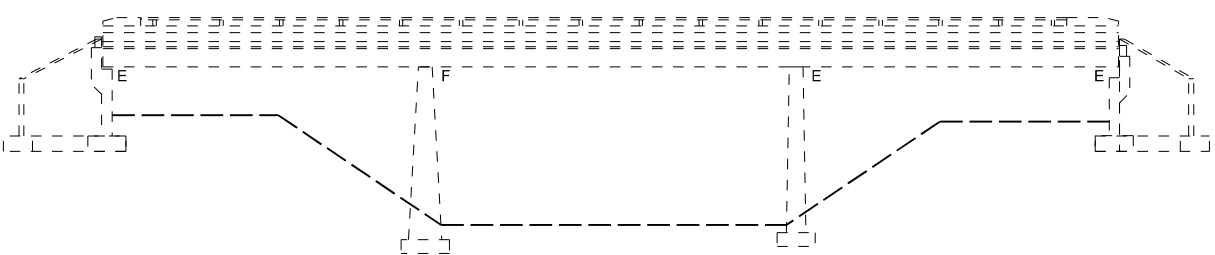
\* On New Concrete Only

GENERAL PLAN & ELEVATION  
IL 127 OVER SWANWICK CREEK  
FAP 42 - (8-1B,1B-1)BRR-1  
PERRY COUNTY  
STRUCTURE NO. 073-0025

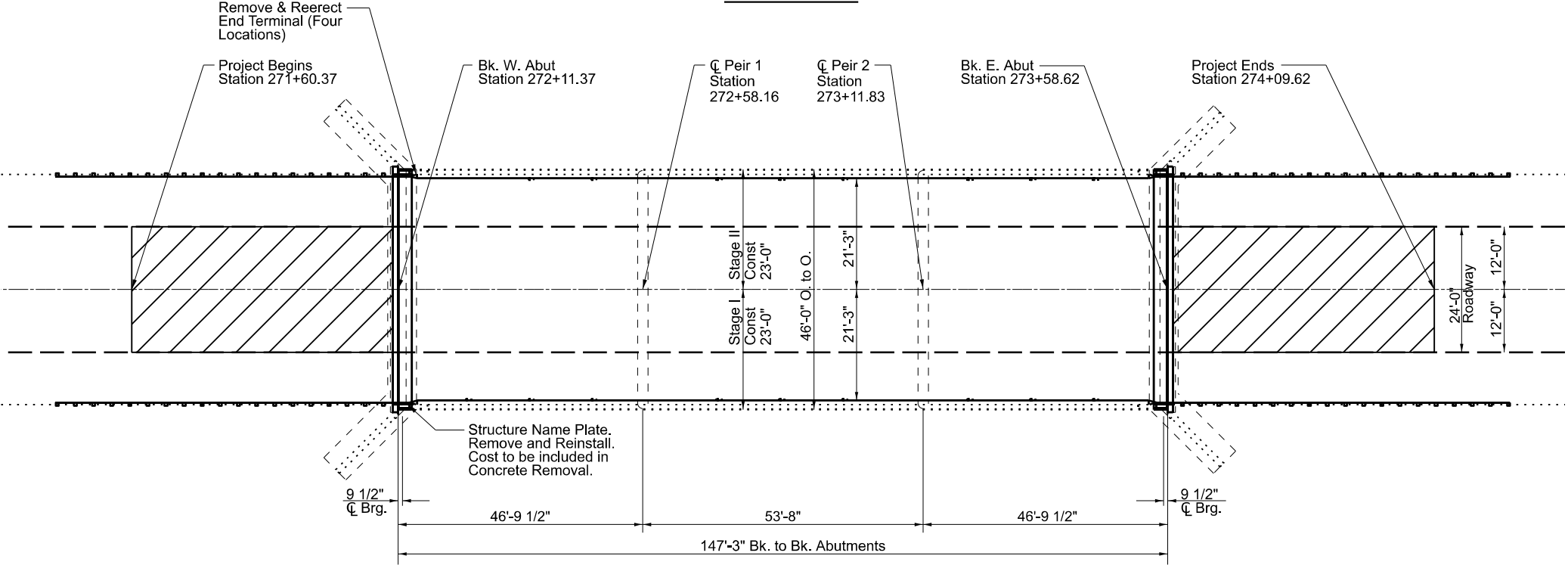


EXPIRES 11-30-2024

Jayme F. Schiff



ELEVATION



PLAN

LEGEND:



SCOPE OF WORK

Approach Slab Repair (Partial)  
Structual Repair of Concrete  
Preformed Joint Strip Seal  
Microsillica Deck Overlay

DESIGN STRESSES

(From Existing Plans)

Design Loading HS 20-44  
Design Stresses  
f<sub>c</sub>=3,500 psi  
f<sub>y</sub>=60,000psi (Reinf.)  
f<sub>y</sub>=27,000 psi (Structure)

(New)

f<sub>c</sub>=4,000 psi  
f<sub>y</sub>=60,000psi (Reinf.)  
f<sub>y</sub>=50,000 psi (M270 Grade 36)

Design Specifications  
2002 AASHTO Standard Specifications for Highway Bridges, 17 Edition.

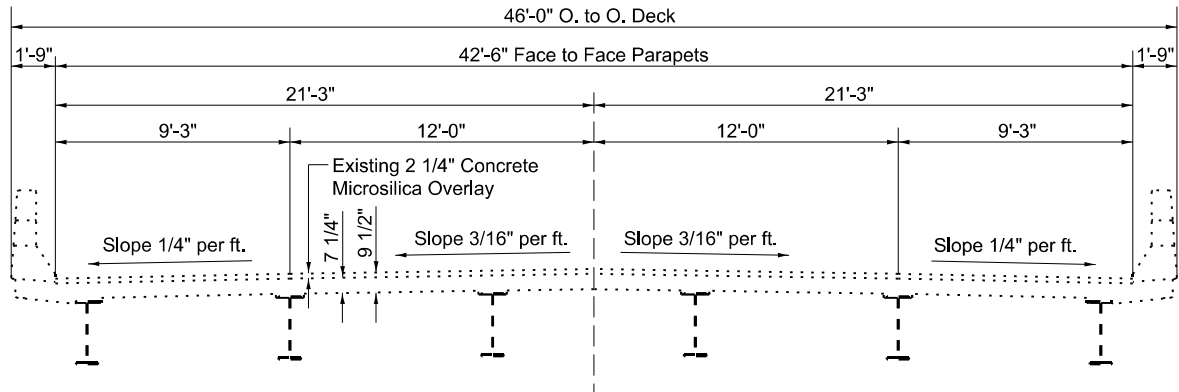
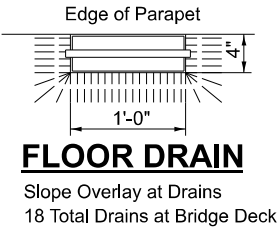
STATE OF ILLINOIS  
DEPARTMENT OF TRANSPORTATION

GENERAL PLAN & ELEVATION  
SN 073-0025

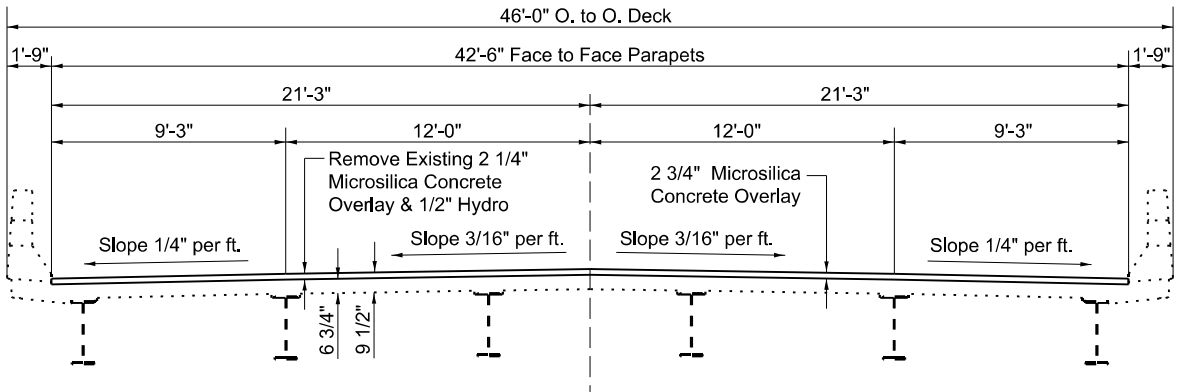
SCALE: SHEET 1 OF 5 SHEETS STA. TO STA.

F.A.P RTE.	SECTION	COUNTY	TOTAL SHEETS	SHEET NO.
42	(8-1B,8-1B-1)BRR-1	PERRY	22	7
CONTRACT NO. 78A27				
ILLINOIS FED. AID PROJECT				

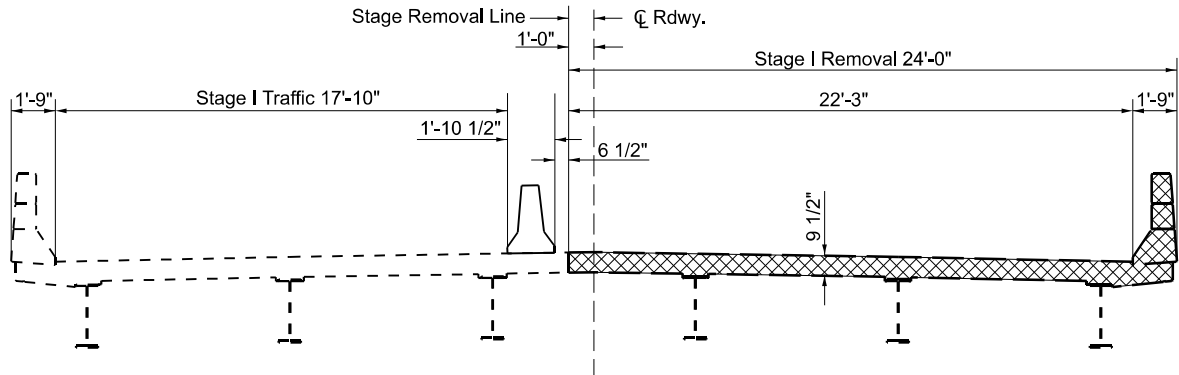
MODEL: Plan Sheet 7 (Sheet)  
FILE NAME: c:\pwworking\illinois.gov\derek.snider\0906417D9xxxx-ShtD-Typicals.dgn



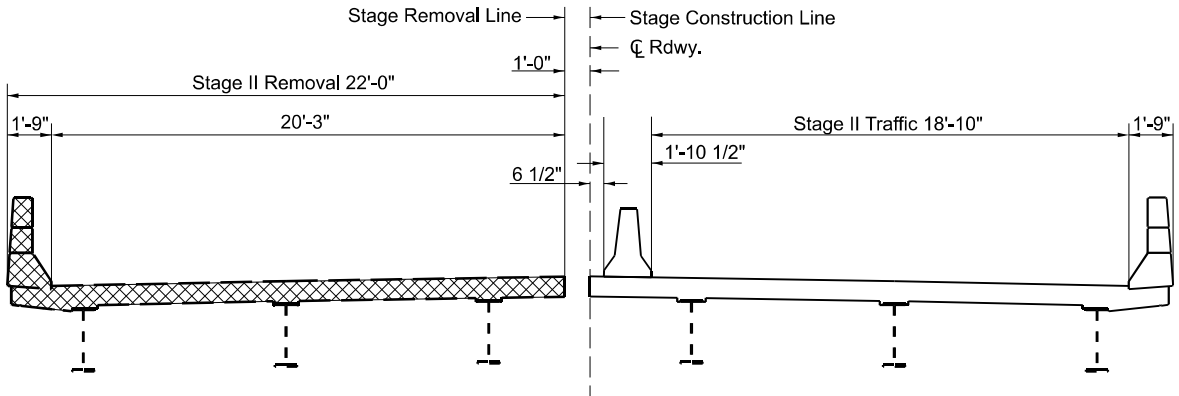
TYPICAL BRIDGE SECTION - EXISTING



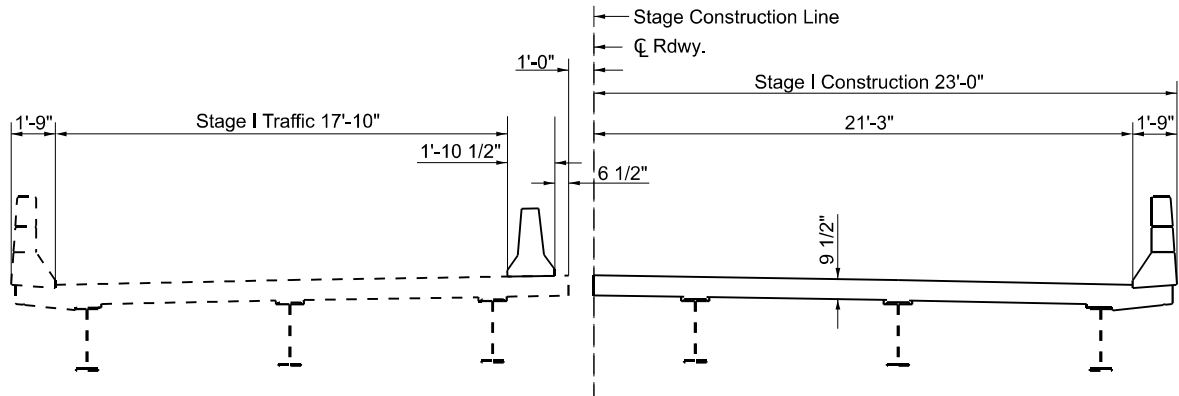
TYPICAL BRIDGE SECTION - PROPOSED



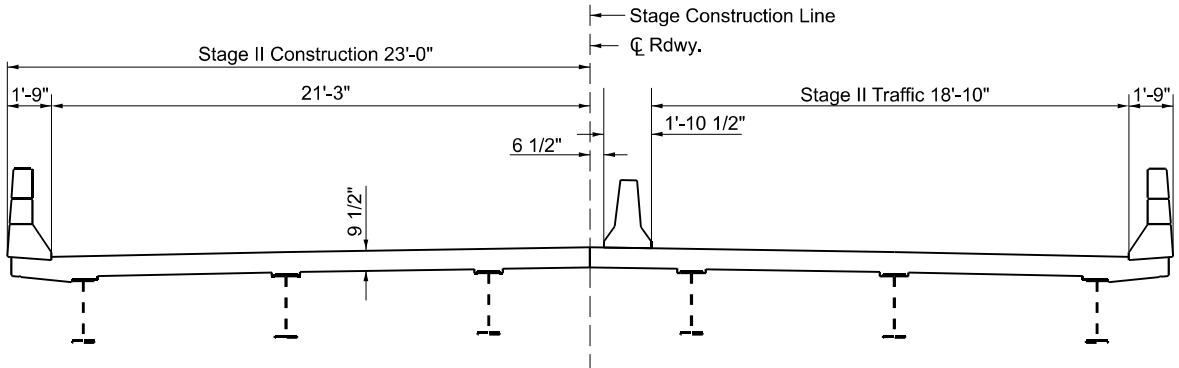
STAGE I REMOVAL  
(AT JOINT LOCATIONS ONLY)



STAGE II REMOVAL  
(AT JOINT LOCATIONS ONLY)



STAGE I CONSTRUCTION  
(AT JOINT LOCATIONS ONLY)



STAGE II CONSTRUCTION  
(AT JOINT LOCATIONS ONLY)

Concrete Removal

Notes: All Sections Looking Upstation

MODEL: Plan Sheet 8 (Sheet)  
FILE NAME: c:\p\work\p\work\illinois.gov\derek.snider@d0986417D9xxxx-ShtD-Typicals.dgn

USER NAME = derek.snider	DESIGNED -	REVISED -
	DRAWN -	REVISED -
	CHECKED -	REVISED -
PLOT DATE = 10/4/2024	DATE -	REVISED -

STATE OF ILLINOIS  
DEPARTMENT OF TRANSPORTATION

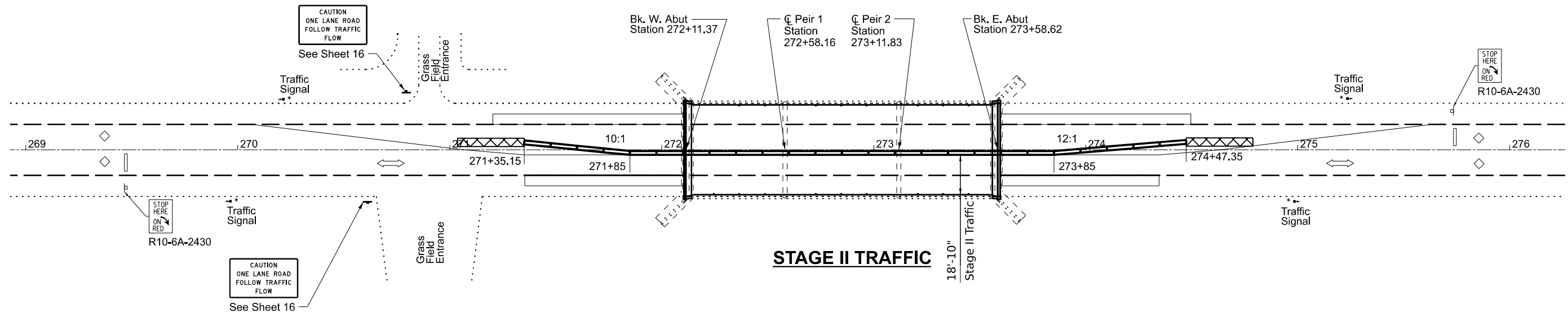
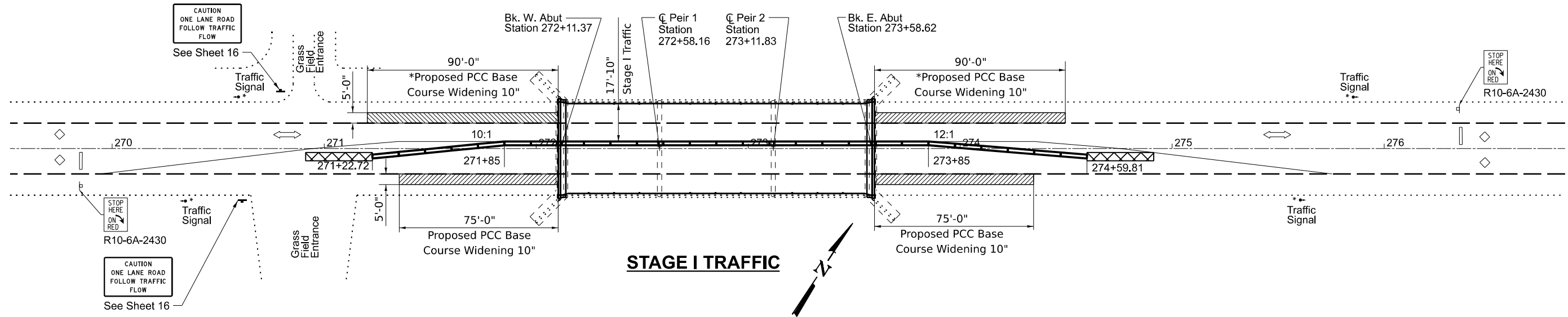
TYPICAL SECTIONS  
SN 073-0025

SCALE: SHEET 2 OF 5 SHEETS STA. TO STA.

F.A.P. RTE.	SECTION	COUNTY	TOTAL SHEETS	SHEET NO.
42	(8-1B,8-1B-1)BRR-1	PERRY	22	8
CONTRACT NO. 78A27				
ILLINOIS FED. AID PROJECT				



\* Must be installed pre stage I under traffic standard 701326.



MODEL: Plan Sheet 9 (Sheet)  
FILE NAME: c:\pwworking\illinois.gov\derek.snider\0986417D9xxx-ShtD-Typicals.dgn

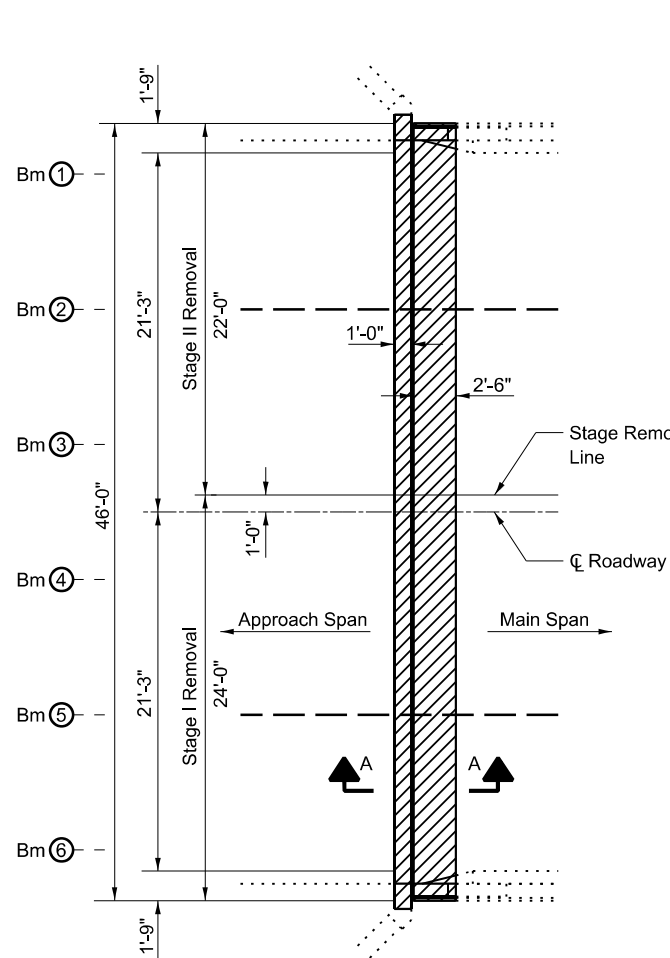
USER NAME = derek.snider	DESIGNED -	REVISED -
	DRAWN -	REVISED -
	CHECKED -	REVISED -
PLOT DATE = 10/4/2024	DATE -	REVISED -

STATE OF ILLINOIS  
DEPARTMENT OF TRANSPORTATION

STAGING PLAN  
SN 073-0025

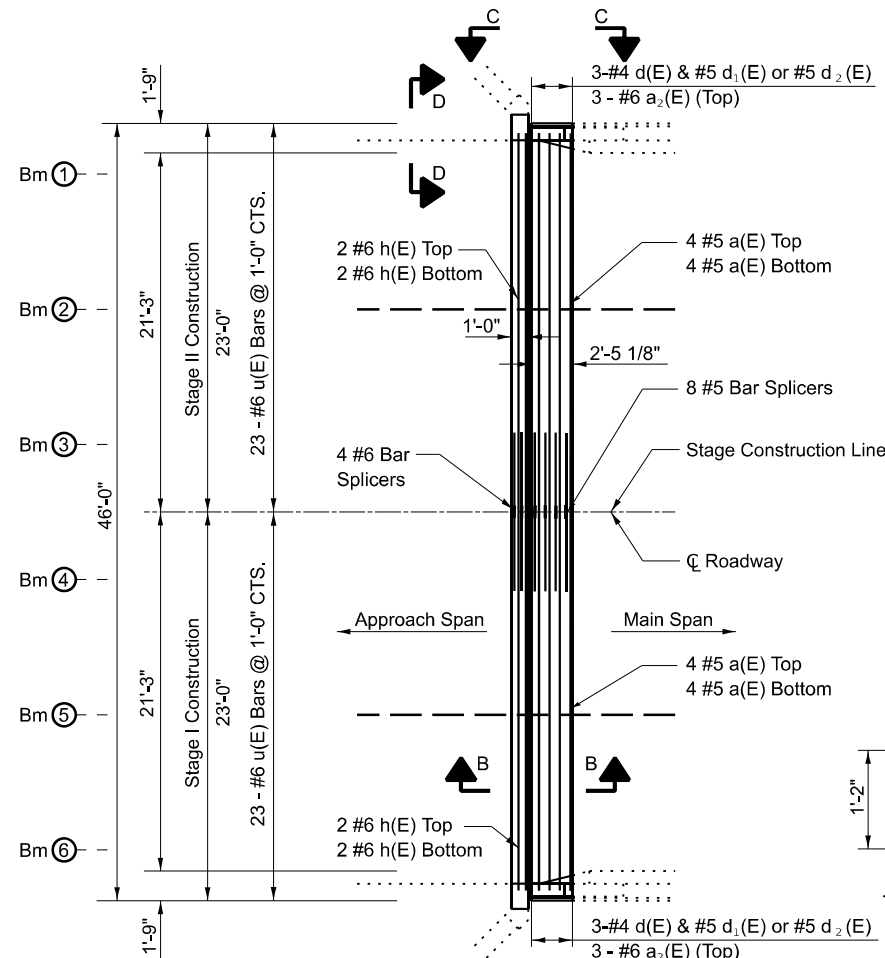
SCALE: SHEET 3 OF 5 SHEETS STA. TO STA.

F.A.P. RTE.	SECTION	COUNTY	TOTAL SHEETS	SHEET NO.
42	(8-1B,8-1B-1)BRR-1	PERRY	22	9
CONTRACT NO. 78A27				
ILLINOIS FED. AID PROJECT				

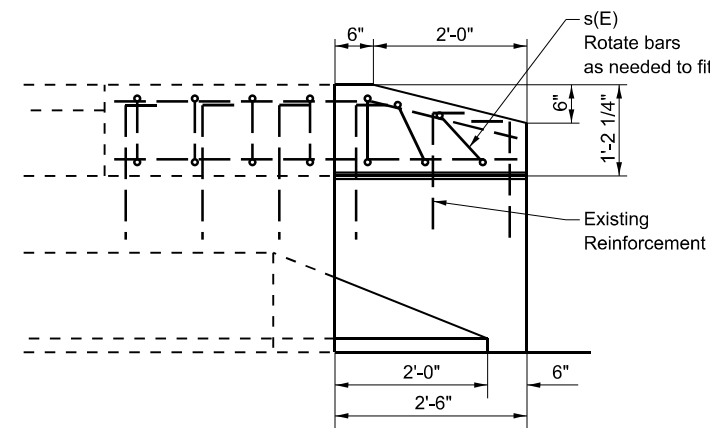


**JOINT AT WEST ABUTMENT  
SHOWING CONCRETE REMOVAL  
(EAST ABUTMENT SIMILAR)**

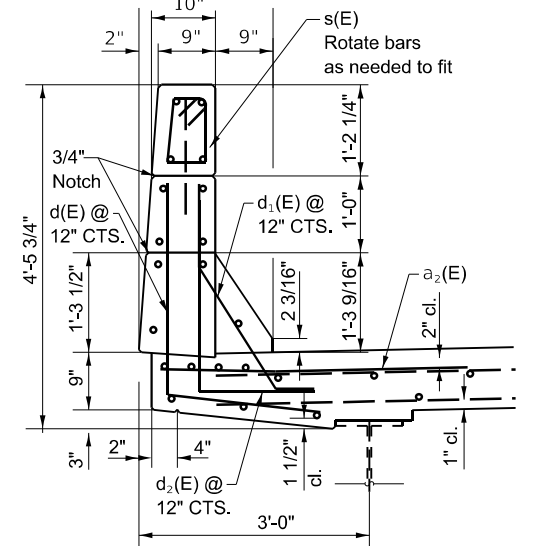
Concrete Removal



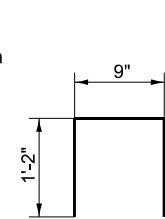
**JOINT AT WEST ABUTMENT  
SHOWING NEW CONCRETE  
(EAST ABUTMENT SIMILAR)**



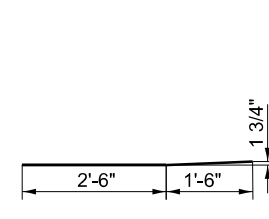
**ELEVATION AT PARAPET**



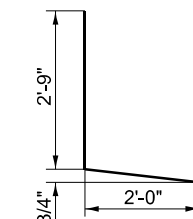
**SECTION THROUGH PARAPET**



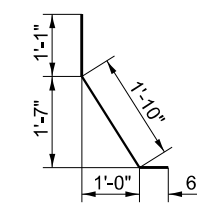
**BAR u(E)**



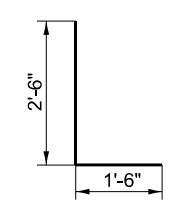
**BAR a2(E)**



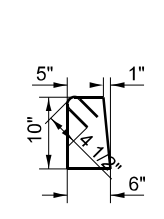
**BAR d(E)**



**BAR d1(E)**



**BAR d2(E)**

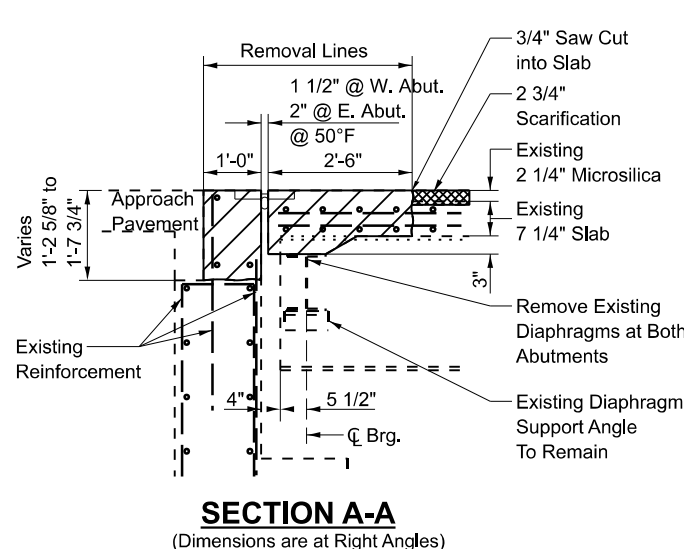


**BAR s(E)**

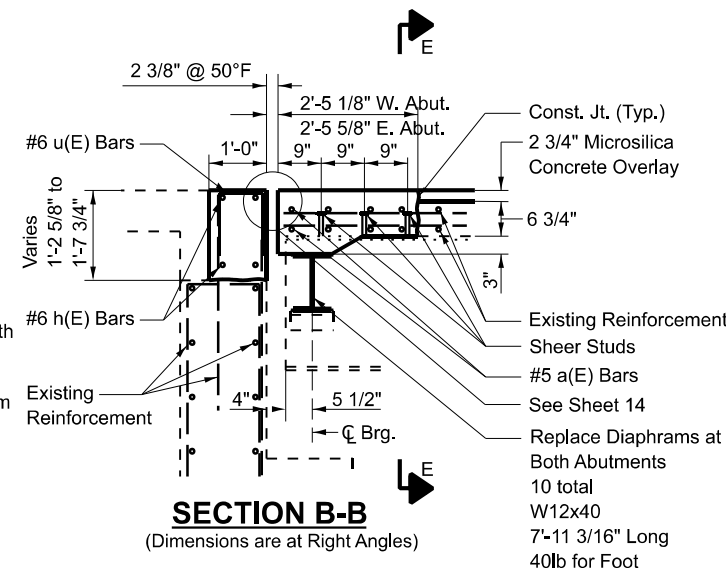
**BILL OF MATERIAL (BOTH ABUTMENT)**

Bar	No.	Size	Length	Shape
a(E)	32	#5	22'-6"	—
a2(E)	12	#6	4'-0"	—
d(E)	12	#4	4'-9"	L
d1(E)	12	#5	3'-5"	U
d2(E)	12	#5	4'-0"	L
h(E)	16	#6	22'-6"	—
s(E)	12	#4	3'-4"	U
u(E)	92	#6	3'-1"	U
Bar Splicer			Each	24
Concrete Superstructure			Cu. Yd.	14.3
Concrete Removal			Cu. Yd.	14.3
Reinforcement Bars, Epoxy Coated			Pound	1190
Structural Steel Removal			Pound	3200
Furnishing and Erecting Structural Steel			Pound	3200
Stud Shear Connectors			Each	108

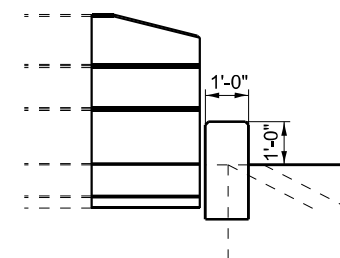
**JOINT RECONSTRUCTION DETAILS  
IL 127 OVER SWANWICK CREEK  
FAP 42 - D9 BRIDGE OVERLAY 2023-2  
PERRY COUNTY  
STRUCTURE NO. 073-0025**



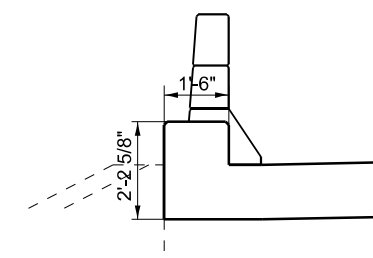
**SECTION A-A  
(Dimensions are at Right Angles)**



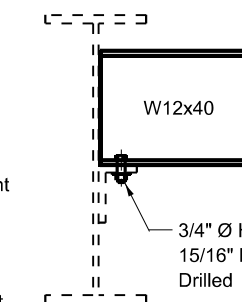
**SECTION B-B  
(Dimensions are at Right Angles)**



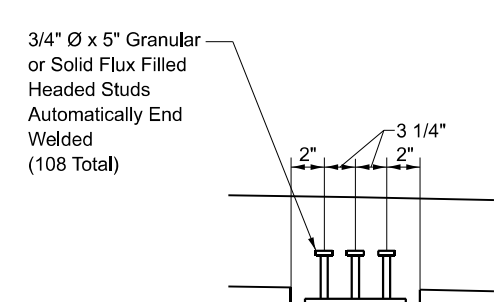
**SECTION C-C  
(Dimensions are at Right Angles)**



**SECTION D-D  
(Dimensions are at Right Angles)**



**SECTION AT DIAPHRAGM**



**SECTION AT BEAM END E-E**

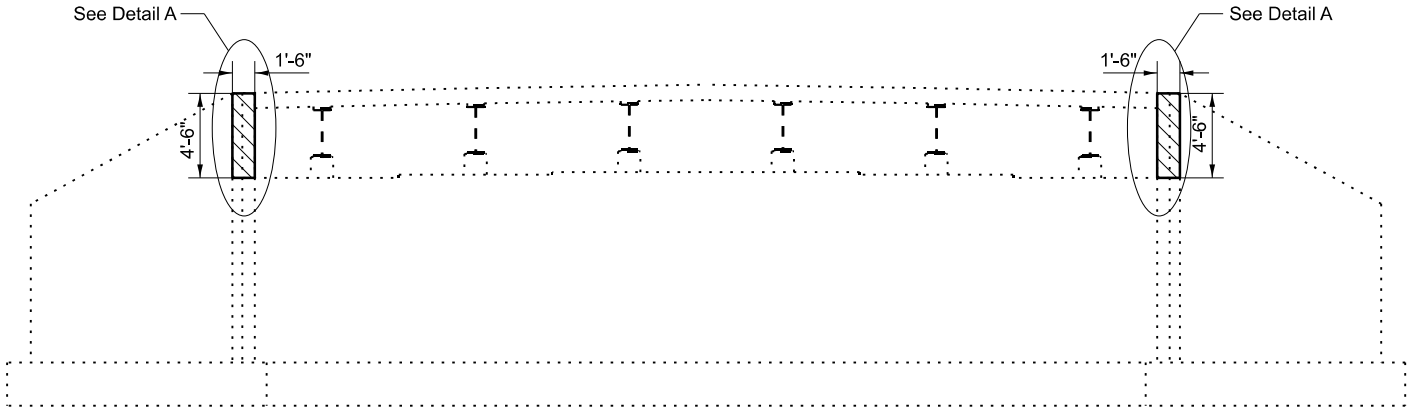
STATE OF ILLINOIS  
DEPARTMENT OF TRANSPORTATION

JOINT RECONSTRUCTION DETAILS  
SN 073-0025

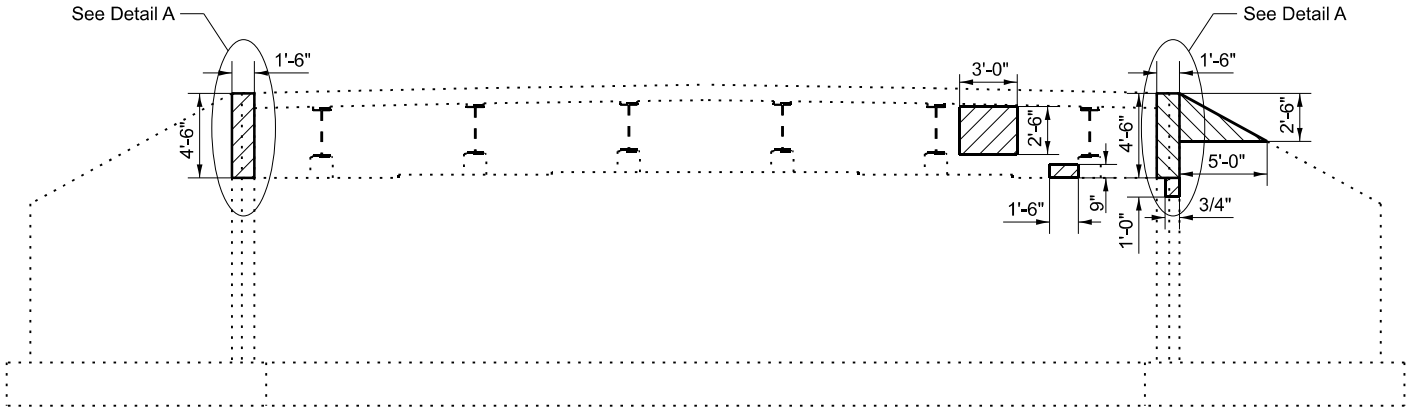
SCALE: SHEET 4 OF 5 SHEETS STA. TO STA.

F.A.P. RTE.	SECTION	COUNTY	TOTAL SHEETS	SHEET NO.
42	(8-1B,8-1B-1)BRR-1	PERRY	22	10
CONTRACT NO. 78A27				
ILLINOIS FED. AID PROJECT				

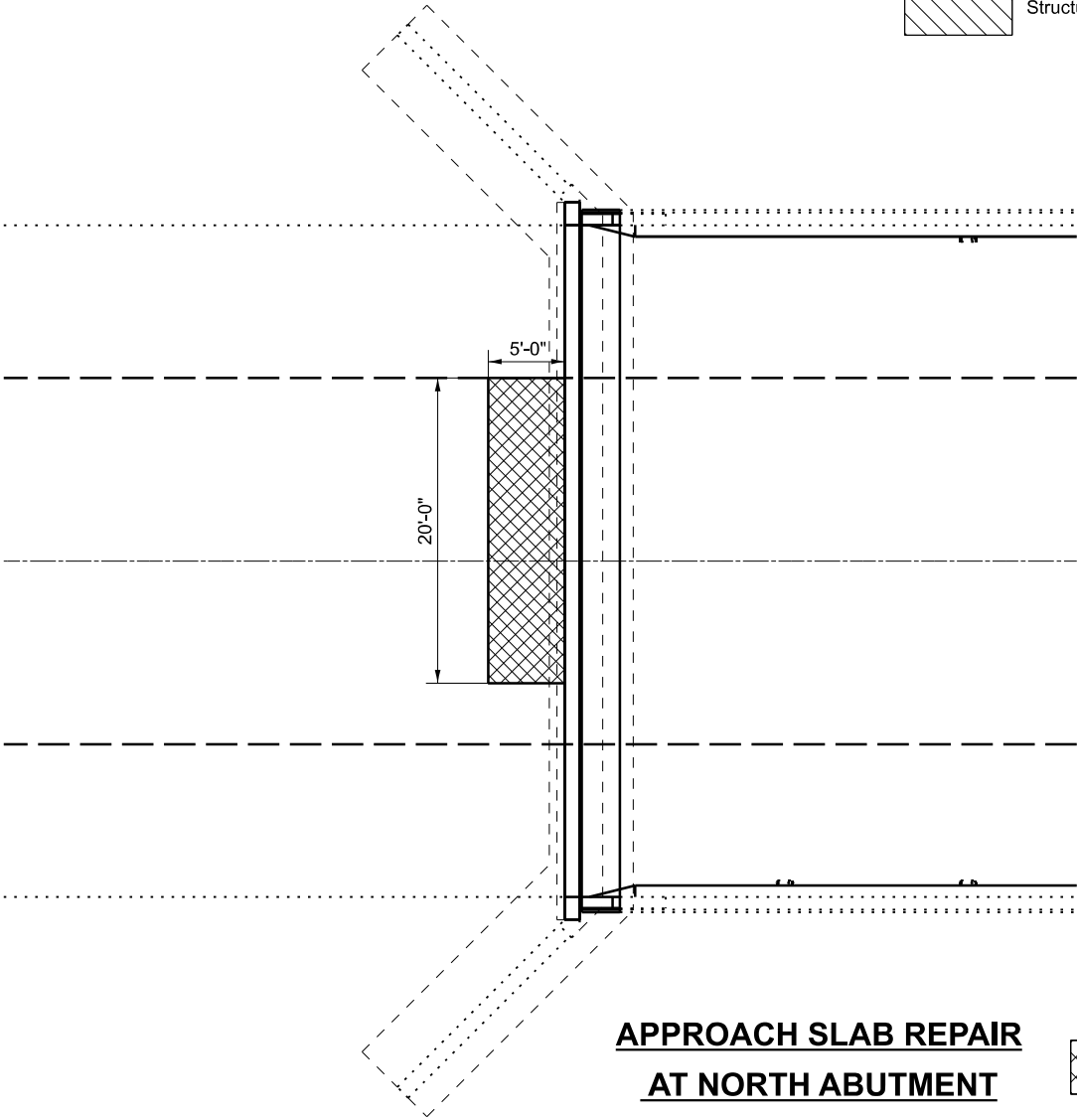
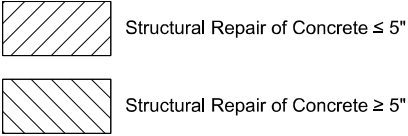
USER NAME = derek.snider	DESIGNED -	REVISED -
	DRAWN -	REVISED -
	CHECKED -	REVISED -
PLOT DATE = 10/4/2024	DATE -	REVISED -



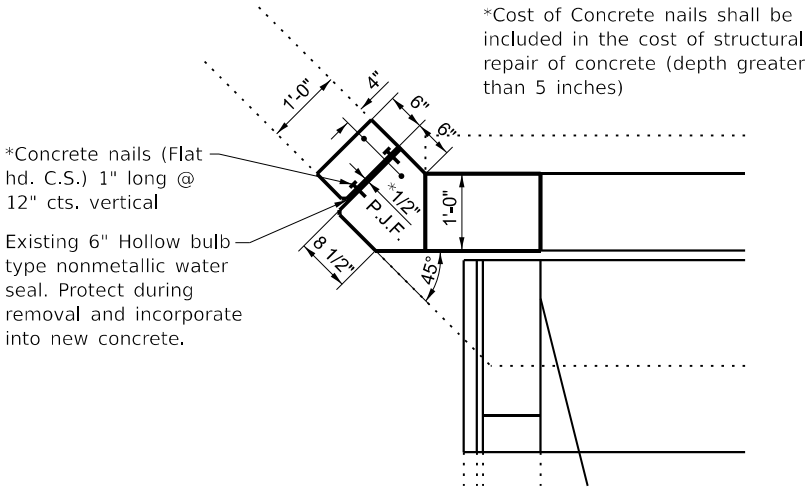
**ELEVATION AT SOUTH ABUTMENT**  
(Looking South)



**ELEVATION AT NORTH ABUTMENT**  
(Looking North)



**APPROACH SLAB REPAIR  
AT NORTH ABUTMENT**



**DETAIL "A" - PLAN AT ABUTMENT WING WALL CONNECTION**  
(At Abutment Ends 4 Locations Total )

**BILL OF MATERIAL**

ITEM	UNIT	TOTAL
Approch Slab Repair (Partial Depth)	Sq. Yd.	11
Structural Repair of Concrete (Depth ≤ 5 Inches)	Sq. Ft.	9
Structural Repair of Concrete (Depth ≥ 5 Inches)	Sq. Ft.	34

MODEL: Plan Sheet 11 (Sheet)  
FILE NAME: c:\pwworking\illinois.gov\derek.snider@d0986417D9xxxx-ShtD-Typicals.dgn

USER NAME = derek.snider	DESIGNED -	REVISED -
	DRAWN -	REVISED -
	CHECKED -	REVISED -
PLOT DATE = 10/4/2024	DATE -	REVISED -

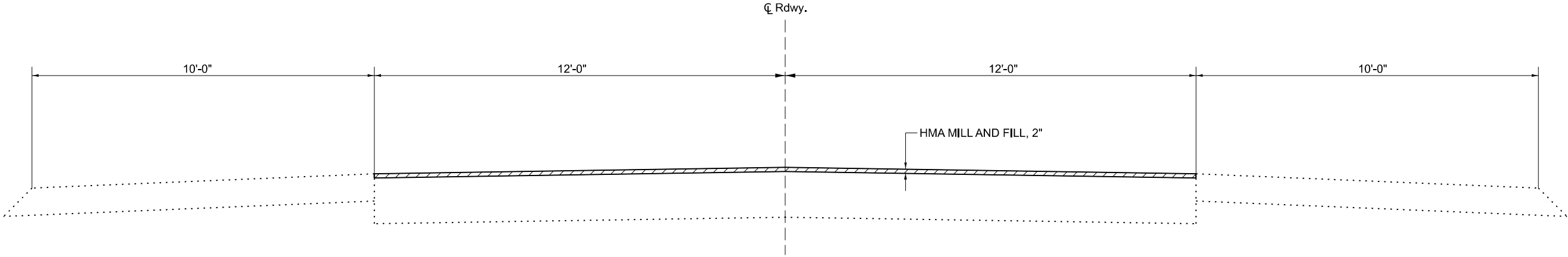
STATE OF ILLINOIS  
DEPARTMENT OF TRANSPORTATION

APPROCH SLAB PATCHING & STRUCTURAL REPAIR OF CONCRETE SN 073-0025			
SCALE:	SHEET 5 OF 5 SHEETS	STA.	TO STA.

F.A.P RTE.	SECTION	COUNTY	TOTAL SHEETS	SHEET NO.
42	(8-1B,8-1B-1)BRR-1	PERRY	22	11
CONTRACT NO. 78A27				
ILLINOIS FED. AID PROJECT				

MODEL: Plan Sheet 12 (Sheet)  
FILE NAME: c:\pwworking\illinois.gov\derek.snider@d0986417D9xxxx-ShtD-Typicals.dgn

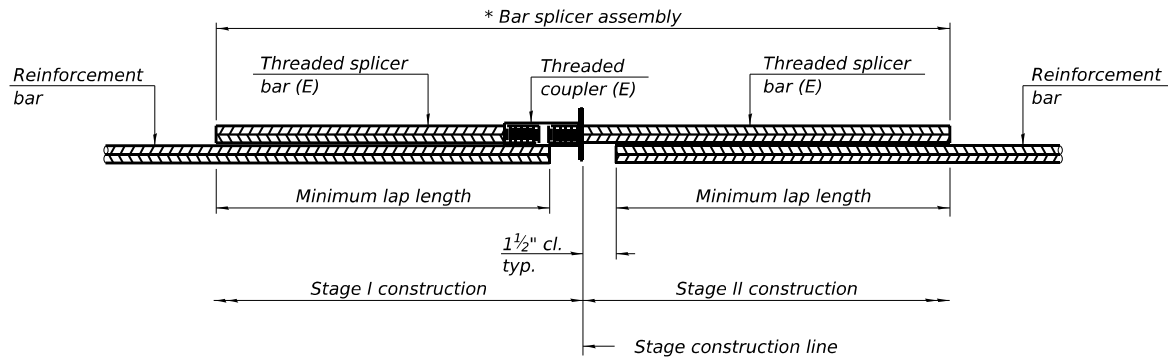
PAVEMENT SCHEDULE				
STATION			HMA SURFACE REMOVAL 2"	HMA SURFACE COURSE, IL-9.5, MIX "C", N70
			SQ YD	TON
PERRY COUNTY SN 073-0025				
271 + 60.37	TO	272 + 10.37	134	15
273 + 59.62	TO	274 + 09.62	134	15
PERRY COUNTY SN 073-0026				
280 + 55.91	TO	281 + 05.91	134	15
283 + 46.09	TO	283 + 96.09	134	15
GRAND TOTAL			536	60



TYPICAL SECTION

	USER NAME = derek.snider	DESIGNED -	REVISED -	STATE OF ILLINOIS DEPARTMENT OF TRANSPORTATION	MILL AND FILL AT APPROCH PAVEMENT SN 073-0025 & SN 073-0026			F.A.P RTE.	SECTION	COUNTY	TOTAL SHEETS	SHEET NO.
		DRAWN -	REVISED -					42	(8-1B,8-1B-1)BRR-1	PERRY	22	12
		CHECKED -	REVISED -					CONTRACT NO. 78A27				
	PLOT DATE = 8/7/2024	DATE -	REVISED -		SCALE:	SHEET	OF	SHEETS	STA.	TO STA.	ILLINOIS FED. AID PROJECT	





STANDARD BAR SPLICER ASSEMBLY PLAN

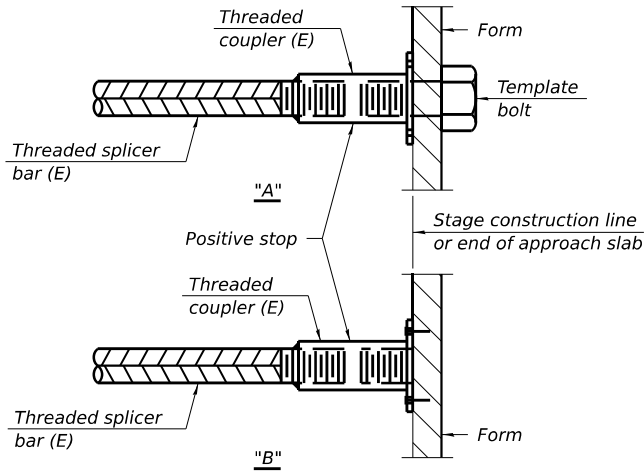
Only bar splicer assemblies as presented on the approved QPL list may be used.

Threaded splicer bar length = min. lap length + 1½" + thread length

\* Epoxy not required on Bar Splicer Assembly components used in conjunction with black bars.

SN 073-0025			
Location	Bar size	No. assemblies required	Minimum lap length
Deck	#5	16	3'-6"
Hatchblock	#6	8	4'-0"

SN 073-0026			
Location	Bar size	No. assemblies required	Minimum lap length
Deck	#5	16	3'-6"
Hatchblock	#6	8	4'-0"

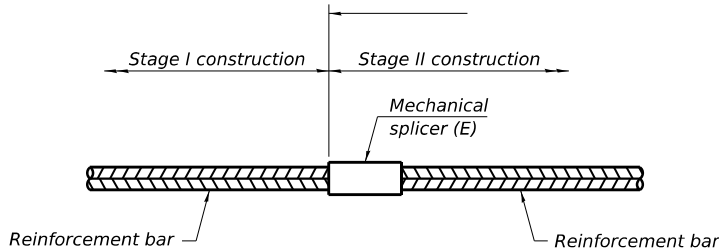


INSTALLATION AND SETTING METHODS

"A" : Set bar splicer assembly by means of a template bolt.

"B" : Set bar splicer assembly by nailing to wood forms or cementing to steel forms.

(E) : Indicates epoxy coating.



STANDARD MECHANICAL SPLICER

Location	Bar size	No. assemblies required

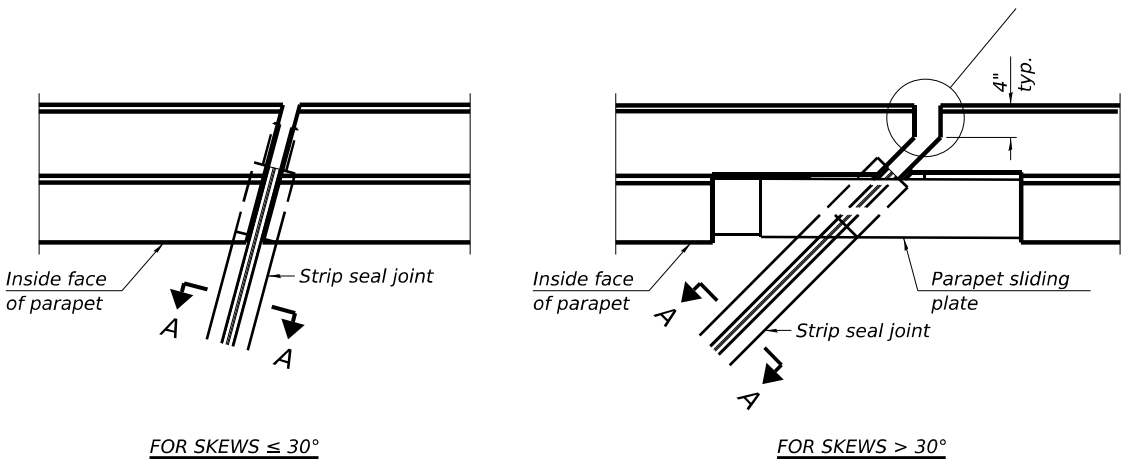
Notes:  
Splicer bars shall be deformed with threaded ends and have a minimum 60 ksi yield strength.  
All reinforcement shall be lapped and tied to the splicer bars.  
Bar splicer assemblies shall be epoxy coated according to the requirements for reinforcement bars. See Section 508 of the Standard Specifications.  
See approved list of bar splicer assemblies and mechanical splicers for alternatives.

BSD-1

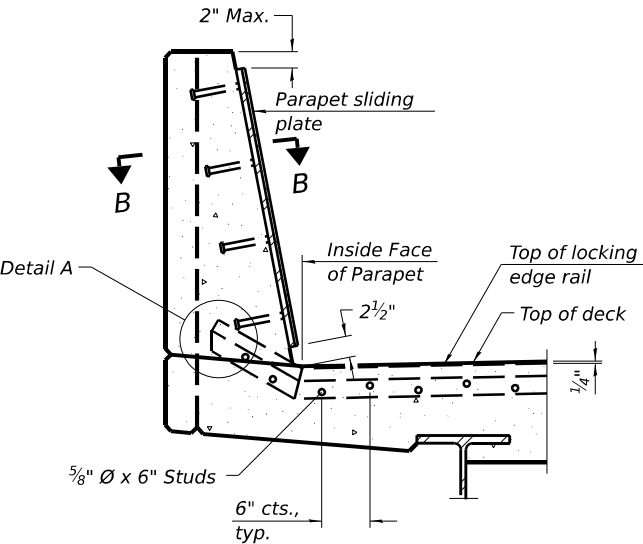
5-15-2023

MODEL: Pln Sheet 13 (Sheet)  
FILE NAME: c:\pwworking\illinois.gov\derek.snider\0986417D9xxxx-ShtD-Typicals.dgn

	USER NAME = derek.snider	DESIGNED -	REVISED -	STATE OF ILLINOIS DEPARTMENT OF TRANSPORTATION	BAR SPLICER ASSEMBLY DETAILS SN 073-0025 & SN 073-0026		F.A.P RTE.	SECTION	COUNTY	TOTAL SHEETS	SHEET NO.
		DRAWN -	REVISED -				42	(8-1B,8-1B-1)BRR-1	PERRY	22	13
		CHECKED -	REVISED -				CONTRACT NO. 78A27				
	PLOT DATE = 8/7/2024	DATE -	REVISED -				ILLINOIS FED. AID PROJECT				
SCALE:		SHEET OF 22 SHEETS		STA.		TO STA.					

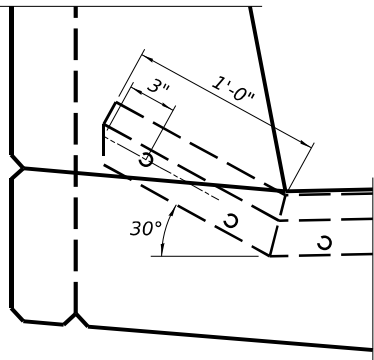


PLAN AT PARAPET

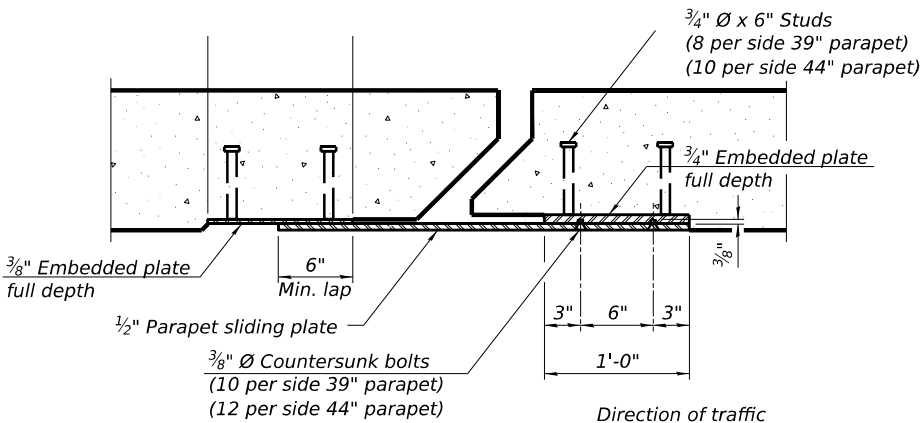


SECTION AT PARAPET

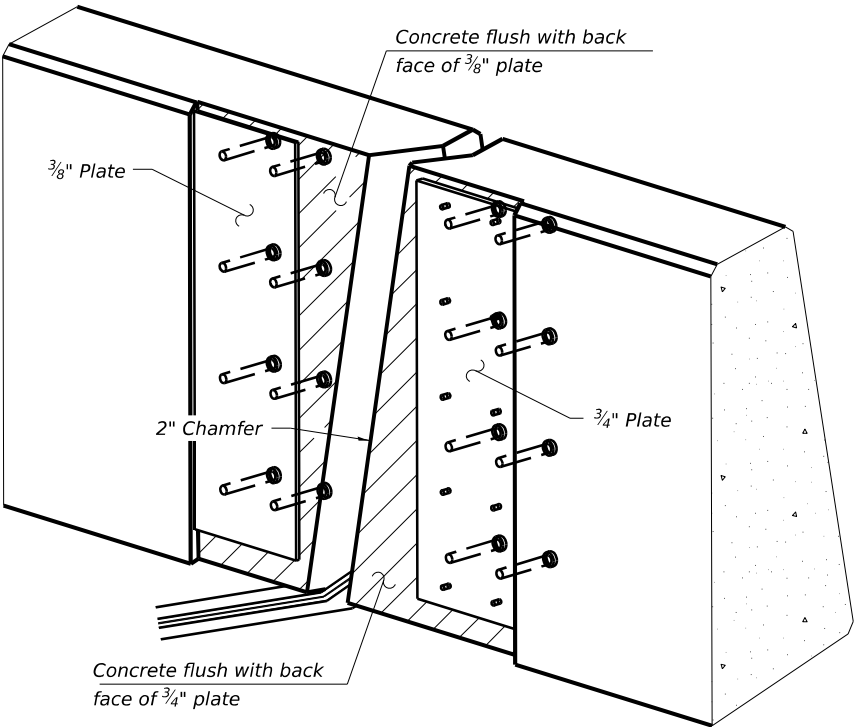
(Skews  $> 30^\circ$  shown. Skews  $\leq 30^\circ$  similar except as shown in plan view.)



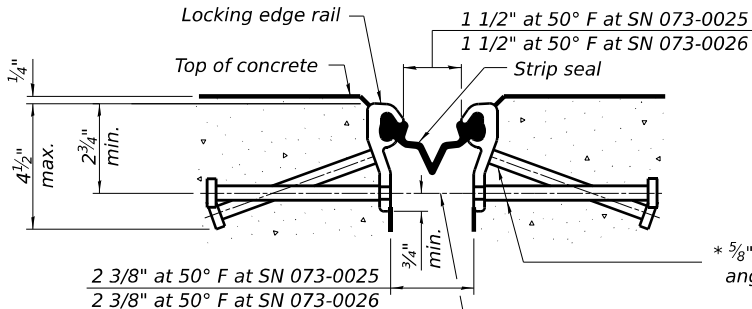
DETAIL A



SECTION B-B



TRIMETRIC VIEW  
(Showing embedded plates only)



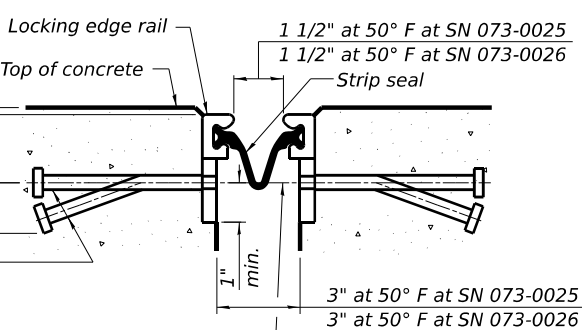
SHOWING ROLLED RAIL JOINT

\* 5/8"  $\varnothing$  x 6" studs @ 6" cts. (alternate angled/bent studs with horizontal studs)

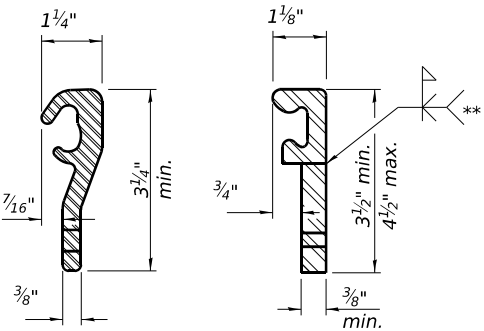
3/8"  $\varnothing$  threaded rods in 7/16"  $\varnothing$  holes at 4'-0"  $\pm$  cts. for holding the proper joint opening based on the temperature during the deck pour. Place to miss studs. All rods shall be burned, or sawed off flush with the plates after concrete is set.

SECTION A-A

\* Granular or solid flux filled headed studs conforming to Article 1006.32 of the Std. Specs., automatically end welded.



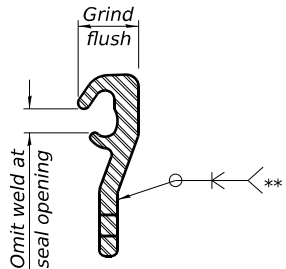
SHOWING WELDED RAIL JOINT



ROLLED (EXTRUDED) RAIL  
WELDED RAIL

LOCKING EDGE RAILS

\*\* Back gouge not required if complete joint penetration is verified by mock-up.



LOCKING EDGE RAIL SPLICE

The inside of the locking edge rail groove shall be free of weld residue. Rolled rail shown, welded rail similar.

BILL OF MATERIAL

SN 073-0025		
Item	Unit	Total
Preformed Joint Strip Seal	Foot	92

SN 073-0026		
Item	Unit	Total
Preformed Joint Strip Seal	Foot	92

F.A.P. RTE.	SECTION	COUNTY	TOTAL SHEETS	SHEET NO.
42	(8-1B,8-1B-1)BRR-1	PERRY	22	14
CONTRACT NO. 78A27				
ILLINOIS FED. AID PROJECT				

MODEL: Plan Sheet 14 (Sheet)  
FILE NAME: c:\pwworking\illinois.gov\derek.snider\09086417D9xxxx-SntD-Typicals.dgn

EJ-SS

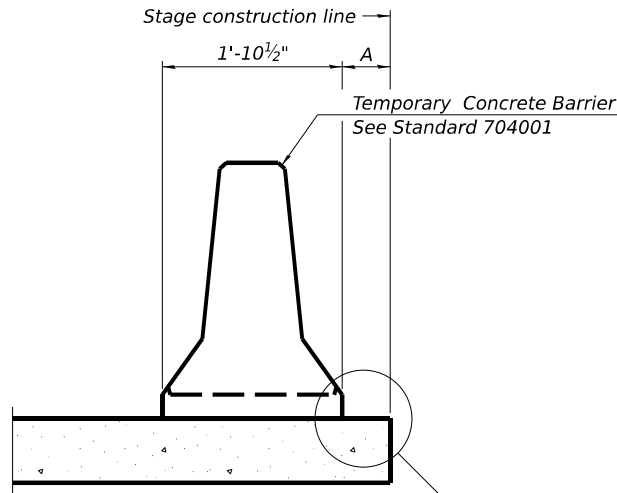
5-15-2023

USER NAME = derek.snider	DESIGNED -	REVISED -
	DRAWN -	REVISED -
	CHECKED -	REVISED -
PLOT DATE = 8/7/2024	DATE -	REVISED -

STATE OF ILLINOIS  
DEPARTMENT OF TRANSPORTATION

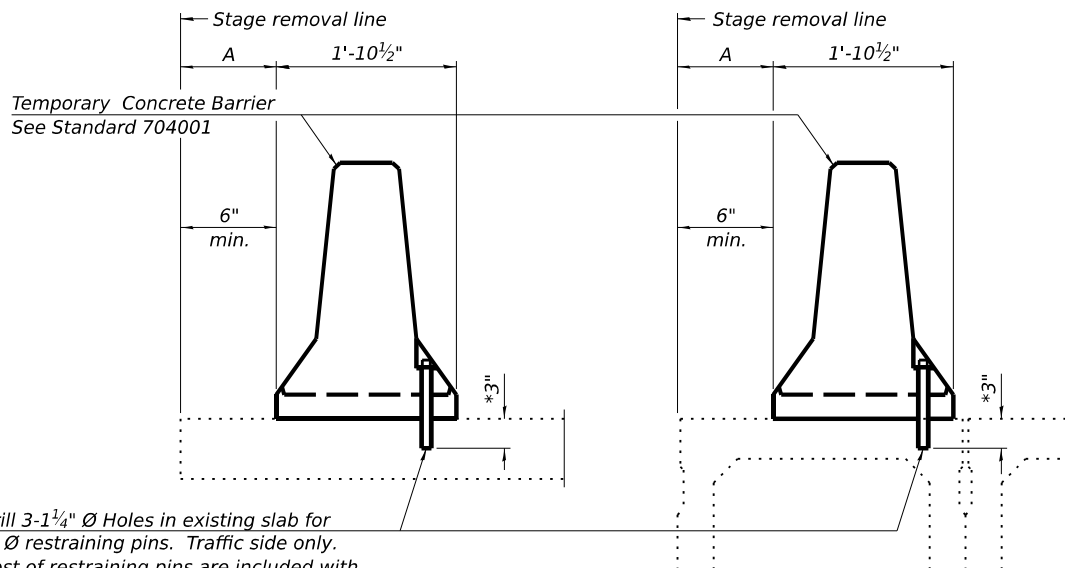
PREFORMED JOINT STRIP SEALS  
SN 073-0025 & SN 073-0026

SCALE: SHEET OF 22 SHEETS STA. TO STA.



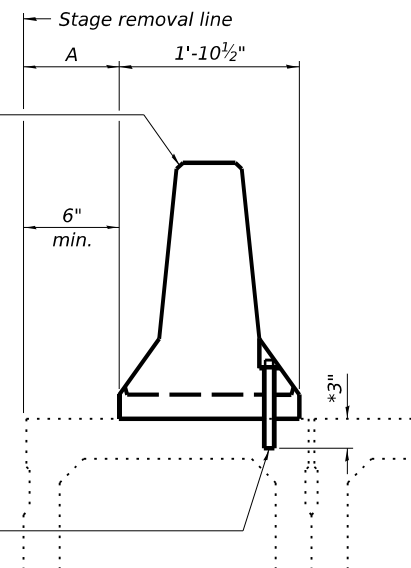
When "A" is 3'-1" or less, the temporary concrete barrier shall be restrained to the new slab according to Detail I, II or III. No restraint is required when "A" is greater than 3'-1".

NEW SLAB OR NEW DECK BEAM



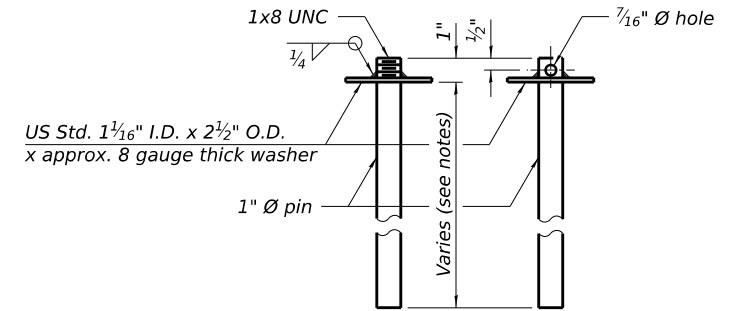
Drill 3-1 1/4" Ø Holes in existing slab for 1" Ø restraining pins. Traffic side only. Cost of restraining pins are included with Temporary Concrete Barrier. No restraint is required when "A" is greater than 3'-1".

EXISTING SLAB



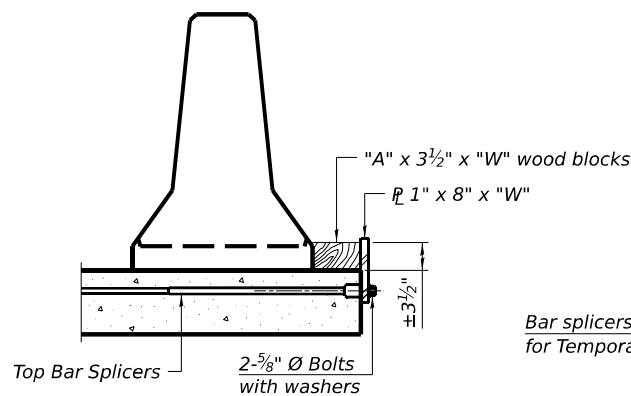
\* When hot-mix asphalt wearing surface is present, embedment shall be 3" plus the wearing surface depth.

EXISTING DECK BEAM

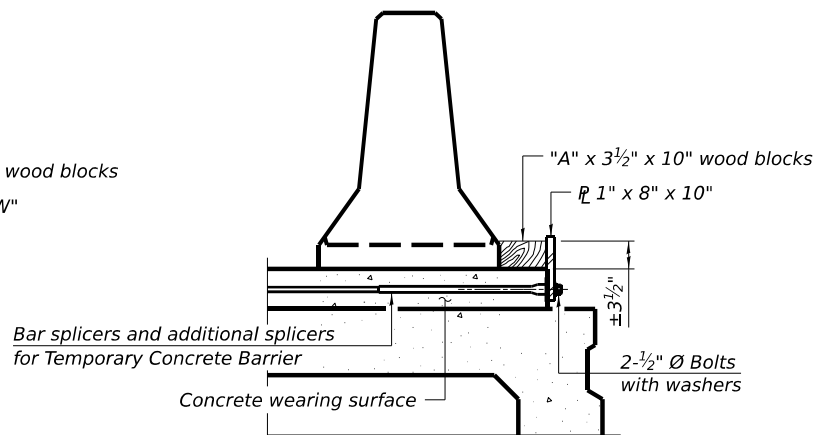


RESTRAINING PIN

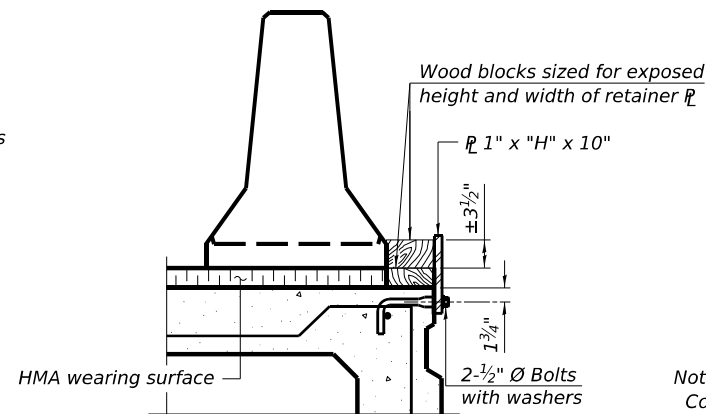
SECTIONS THRU SLAB OR DECK BEAM



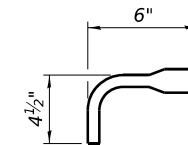
DETAIL I



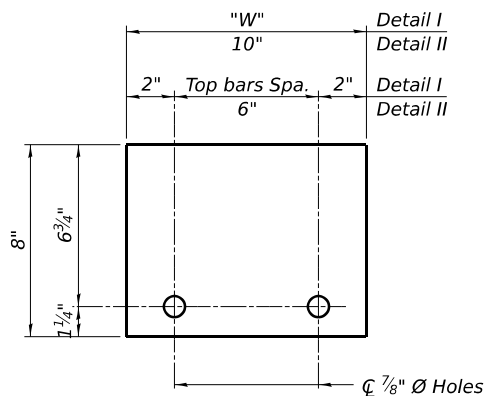
DETAIL II



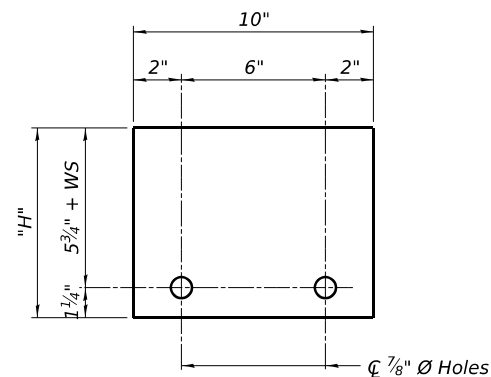
DETAIL III



BAR SPLICER FOR #4 BAR - DETAIL III



STEEL RETAINER 1" x 8" x "W"  
(Detail I and II)



STEEL RETAINER 1" x "H" x 10"  
(Detail III)

Notes:  
Cost of retainer assembly is included with Temporary Concrete Barrier.  
A retainer assembly shall be located at the approximate C of each temporary concrete barrier.  
The retainer plate shall not be removed until the concrete on the adjacent stage is ready to be poured. For Detail III applications the retainer plate shall not be removed until just prior to placing the adjacent beam.  
When the 'A' dimension is less than 1 1/2", the wood block shall be omitted and the barrier shall be placed in direct contact with the steel retainer plate. For deck beam applications the minimum required 'A' distance is 6" to accommodate the shear key clamping device.

Detail I - Installation for a new bridge deck or bridge slab.  
Detail II - Installation for a new deck beam with an initial concrete wearing surface. Additional bar splicers shall be provided at 6'-0" centers and paired with the bar splicers of the concrete wearing surface reinforcement to accommodate the installation of the retainer assemblies. The cost of the additional bar splicers is included with the concrete wearing surface.  
Detail III - Installation for a new deck beam with no initial wearing surface or with an initial hot-mix asphalt (HMA) wearing surface present. The deck beam directly beneath the temporary concrete barrier shall be fabricated with bar splicer inserts in the side of the beam, as detailed, to accommodate the installation of the retainer assemblies. A pair of bar splicers, 6" apart, shall be placed at 6'-0" centers along the length of the beam. The cost of the bar splicers is included with the deck beam.

RAILING CRITERIA

NCHRP 350 Test Level	3
Railing Weight (plf)	440

R-27

5-15-2023

STATE OF ILLINOIS  
DEPARTMENT OF TRANSPORTATION

TEMPORARY CONCRETE BARRIER  
FOR STAGE CONSTRUCTION

SCALE: SHEET OF 22 SHEETS STA. TO STA.

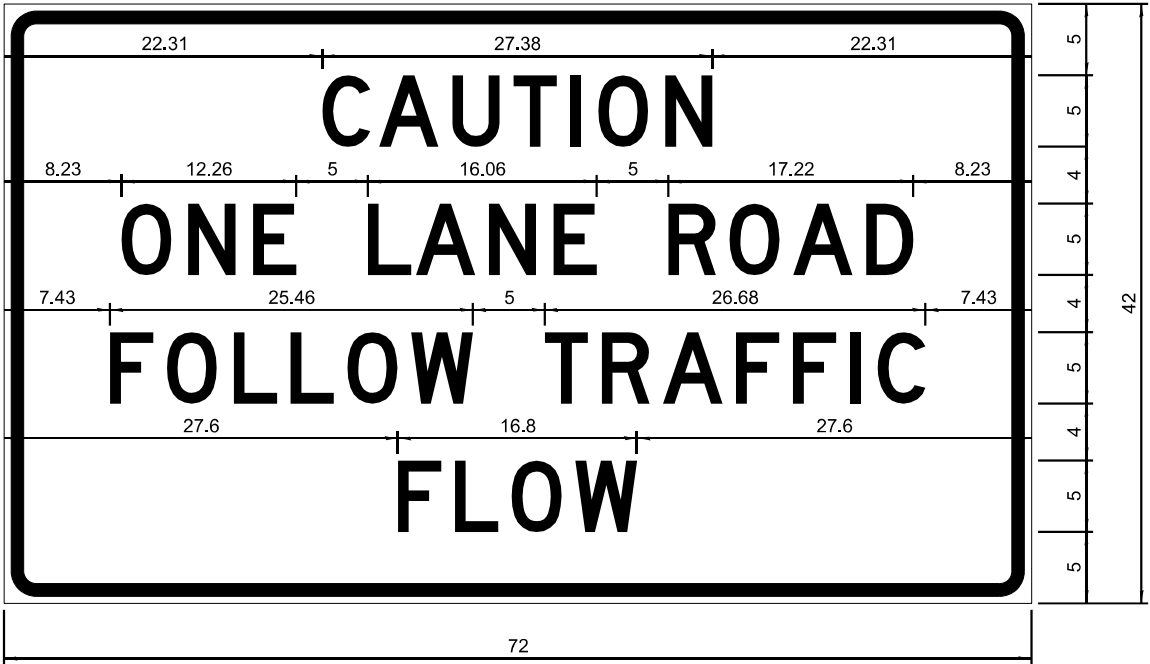
F.A.P RTE.	SECTION	COUNTY	TOTAL SHEETS	SHEET NO.
42	(8-1B,8-1B-1)BRR-1	PERRY	22	15
CONTRACT NO. 78A27				
ILLINOIS FED. AID PROJECT				

MODEL: Pln Sheet 15 (Sheet)  
FILE NAME: c:\pwworking\illinois.gov\derek.snider\0986417D9xxxx-ShtD-Typicals.dgn

MODEL: Plan Sheet 16 (Sheet)  
FILE NAME: c:\pwworking\illinois.gov\_derek.snider\illinois.gov\_derek.snider\0986417D9xxxx-ShtD-Typicals.dgn

ENTRANCE SIGN FOR USE  
WITH TEMPORARY SIGNALS

2



COLOR      LEGEND AND BORDER      BLACK      NON-REFLECTORIZED  
   ORANGE      REFLECTORIZED

2,25" Radius, 0,88" Border, 0,50" Indent;  
[CAUTION] D; [ONE LANE ROAD] D;  
[FOLLOW TRAFFIC] D; [FLOW] D

2 This sign shall be installed at entrances located between the temporary signals as shown in the staging plans.

Table Of Widths And Spaces

22.31	C	3.36	0.62	A	4.18	0.94	U	3.36	0.94	T	3.04	0.94	I	0.78	1.17	O	3.52	1.17	N	3.36	22.31
-------	---	------	------	---	------	------	---	------	------	---	------	------	---	------	------	---	------	------	---	------	-------

8.23	O	3.51	1.17	N	3.36	1.18	E	3.04
------	---	------	------	---	------	------	---	------

5.00	L	3.05	0.31	A	4.18	0.94	N	3.36	1.17	E	3.05
------	---	------	------	---	------	------	---	------	------	---	------

5.00	R	3.36	0.93	O	3.52	0.94	A	4.18	0.93	D	3.36	8.23
------	---	------	------	---	------	------	---	------	------	---	------	------

7.43	F	3.04	0.94	O	3.52	1.17	L	3.04	0.94	L	3.05	0.94	O	3.51	0.94	W	4.37
------	---	------	------	---	------	------	---	------	------	---	------	------	---	------	------	---	------

5.00	T	3.05	0.94	R	3.36	0.94	A	4.18	0.93	F	3.05	0.94	F	3.04	0.94	I	0.78	1.18	C	3.35	7.43
------	---	------	------	---	------	------	---	------	------	---	------	------	---	------	------	---	------	------	---	------	------

27.60	F	3.05	0.94	L	3.04	0.94	O	3.52	0.93	W	4.38	27.60
-------	---	------	------	---	------	------	---	------	------	---	------	-------

GENERAL NOTES

All work to furnish and install these signs shall be included in the cost of the specified traffic control standards and shall not be paid separately.

All Illinois Standard signs shall conform to the latest edition of the "Illinois Standard Highway Signs Book" in effect on the date of invitation for bids.

Signs shall meet the applicable portions of Sections 701 and 720 of the Standard Specifications.

All dimensions are in inches unless otherwise noted.

DRAWN	3-2-16 D2
REVISED	03-12-24
REVISED	
REVISED	

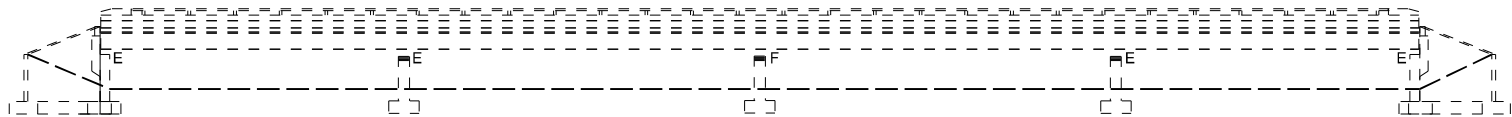
Sign not to scale

STD. 9-34

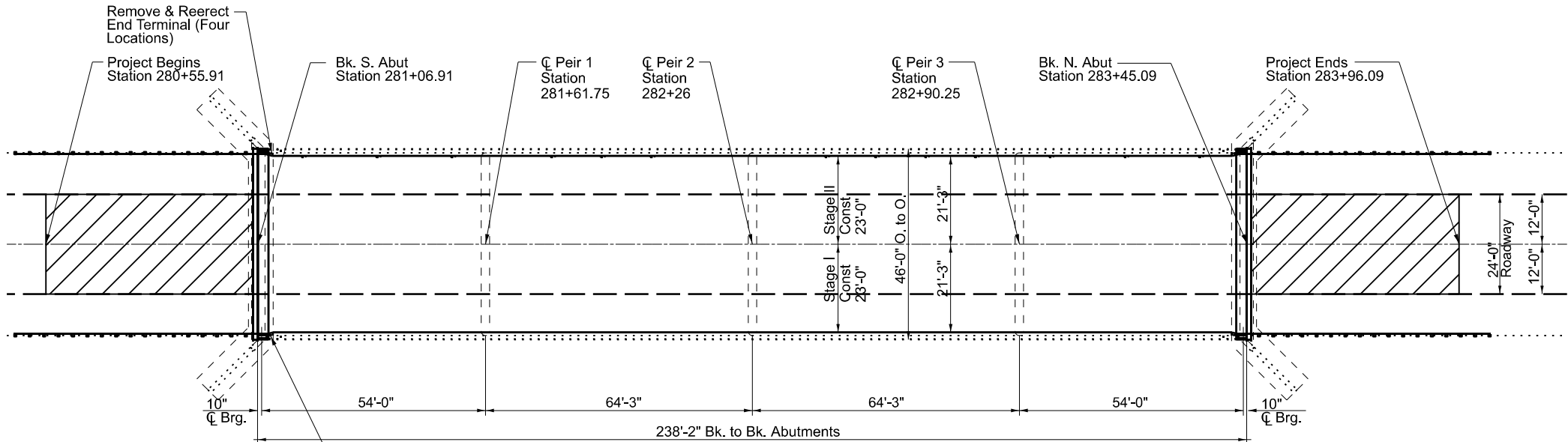
	USER NAME = derek.snider	DESIGNED -	REVISED -	STATE OF ILLINOIS DEPARTMENT OF TRANSPORTATION	CAUTION ONE LANE ROAD SIGN DETAIL			F.A.P RTE.	SECTION	COUNTY	TOTAL SHEETS	SHEET NO.
		DRAWN -	REVISED -					42	(8-1B,8-1B-1)BRR-1	PERRY	22	16
		CHECKED -	REVISED -					CONTRACT NO. 78A27				
	PLOT DATE = 8/7/2024	DATE -	REVISED -		SCALE:	SHEET OF 22 SHEETS	STA. TO STA.	ILLINOIS FED. AID PROJECT				



MODEL: Plan Sheet 17 (Sheet)  
FILE NAME: c:\pwworking\id0986417\Drawings\StdD-Typicals.dgn



ELEVATION



PLAN

LEGEND:



SCOPE OF WORK

- Deck Slab Repair (Partial)
- Structural Repair of Concrete
- Preformed Joint Strip Seal
- Microsilica Deck Overlay

DESIGN STRESSES

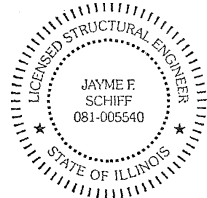
(From Existing Plans)

Design Loading HS 20-44  
Design Stresses  
 $f'_c=3,500$  psi  
 $f_y=60,000$  psi (Reinf.)  
 $f_y=27,000$  psi (Structure)

(New)

$f'_c=4,000$  psi  
 $f_y=60,000$  psi (Reinf.)  
 $f_y=50,000$  psi (M270 Grade 36)

Design Specifications  
2002 AASHTO Standard Specifications for Highway Bridges, 17 Edition.



EXPIRES 11-30-2024

Jayme F. Schiff

GENERAL NOTES

- Reinforcement bars designated (E) shall be epoxy coated.
- Prior to pouring the new concrete deck, all heavy or loose rust, loose mill scale, and other loose or potentially detrimental foreign material shall be removed from the surfaces in contact with concrete. Tightly adhered paint may remain unless otherwise noted. Removal shall be accomplished by methods that will not damage the steel and the cost will be included in the pay item covering removal of the existing concrete.
- Plan dimensions and details relative to the existing structure have been taken from existing plans and are subject to nominal construction variations. The Contractor shall field verify existing dimensions and details affecting new construction and make necessary approved adjustments prior to construction or ordering of materials. Such variations shall not be cause for additional compensation for a change in scope of the work, however, the Contractor will be paid for the quantity actually furnished at the unit price bid for the work.
- Existing reinforcement bars extending into the removal area shall be cleaned, straightened and incorporated into the new construction. Any reinforcement bars that are damaged during concrete removal shall be replaced with an approved bar splicer or anchorage system. Cost included with Concrete Removal.
- Joint openings shall be adjusted according to Article 520.04 of the Std. Specs. when the deck is poured at an ambient temperature other than 50°F.
- All structural steel shall conform to AASHTO Classification M-270 Gr. 36, unless otherwise noted.
- All new structural steel and bearing assembly shall be hot-dip galvanized. See special Provisions for "Hot Dip Galvanizing for Structural Steel"
- Existing structural steel that will be in contact with new structural steel shall be cleaned and painted prior to erection as required by the Special Provision "Cleaning and Painting Contact Surface Areas of Existing Steel Structures".
- Protective Coat shall be applied to all new concrete superstructure and all new concrete overlays as specified in Article 503.19 of Standard Specifications.
- Fasteners shall be ASTM F 3125 Type 1. Fasteners shall be hot dipped galvanized. See Special Provisions for "Hot Dip Galvanizing for Structural Steel." Diaphragm connection bolts shall be 3/4" diameter, holes 15/16" diameter, unless otherwise noted. Two hardened washers shall be required at diaphragm connections.
- Removal of existing diaphragms to be paid for as Structural Steel Removal.
- New diaphragms and associated hardware to be paid for as Furnishing and Erecting Structural Steel.

TOTAL BILL OF MATERIAL

ITEM	UNIT	QUANTITY
HMA Surface Course, IL-9.5, Mix "D", N70	Ton	30
HMA Surface Removal 2"	Sq. Yd.	268
Portland Cement Concrete Base Course Widening, 10"	Sq. Yd.	189
Bituminous Material (Tack Coat)	Pound	120
Deck Slab Repair (Full Depth, Type II)	Sq. Yd.	20
Bar Splicers	Each	24
Concrete Superstructure	Cu. Yd.	14.8
Concrete Removal	Cu. Yd.	14.6
Reinforcement Bars, Epoxy Coated	Pound	1190
Preformed Joint Strip Seal	Foot	92
Structural Repair of Concrete (Depth ≤ 5")	Sq Ft	156
Structural Repair of Concrete (Depth ≥ 5")	Sq Ft	9
* Protective Coat	Sq. Yd.	1123
Bridge Deck Scarification 2 3/4"	Sq Yd.	1100
Bridge Deck Microsilica Concrete Overlay 2 3/4"	Sq Yd.	1100
Bridge Deck Grooving	Sq Yd.	1050
Structural Steel Removal	Pound	3200
Furnishing and Erecting Structural Steel	Pound	3200
Epoxy Crack Injection	Foot	58
Stud Sheer Connectors	Each	108

\* On New Concrete Only

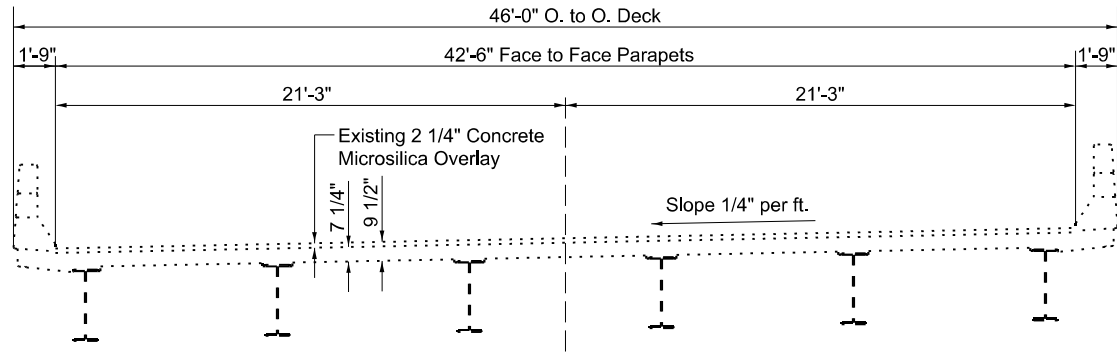
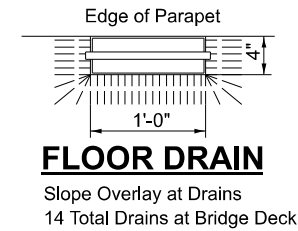
GENERAL PLAN & ELEVATION  
IL 127 OVER SWANWICK CREEK OVERFLOW  
FAP 42 - (8-1B,1B-1)BRR-1  
PERRY COUNTY  
STRUCTURE NO. 073-0026

USER NAME = derek.snider	DESIGNED -	REVISED -
	DRAWN -	REVISED -
	CHECKED -	REVISED -
PLOT DATE = 10/4/2024	DATE -	REVISED -

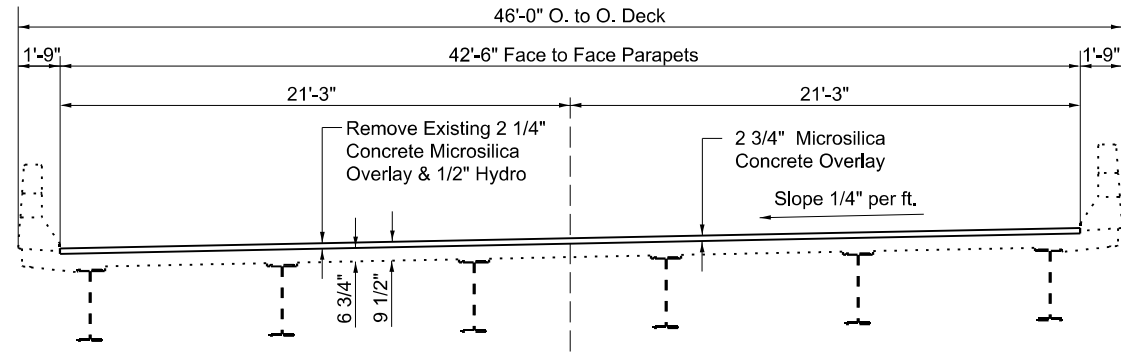
STATE OF ILLINOIS  
DEPARTMENT OF TRANSPORTATION

GENERAL PLAN & ELEVATION SN 073-0026			
SCALE:	SHEET 1 OF 6 SHEETS	STA.	TO STA.

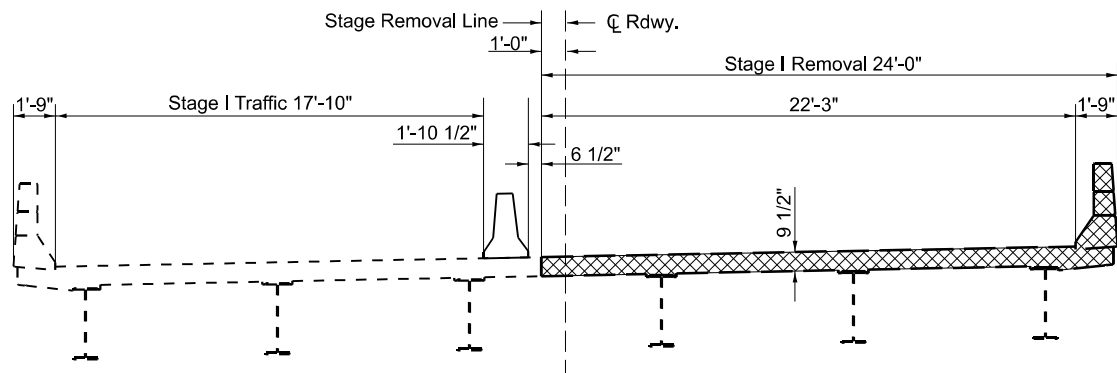
F.A.P RTE.	SECTION	COUNTY	TOTAL SHEETS	SHEET NO.
42	(8-1B,8-1B-1)BRR-1	PERRY	22	17
CONTRACT NO. 78A27				
ILLINOIS FED. AID PROJECT				



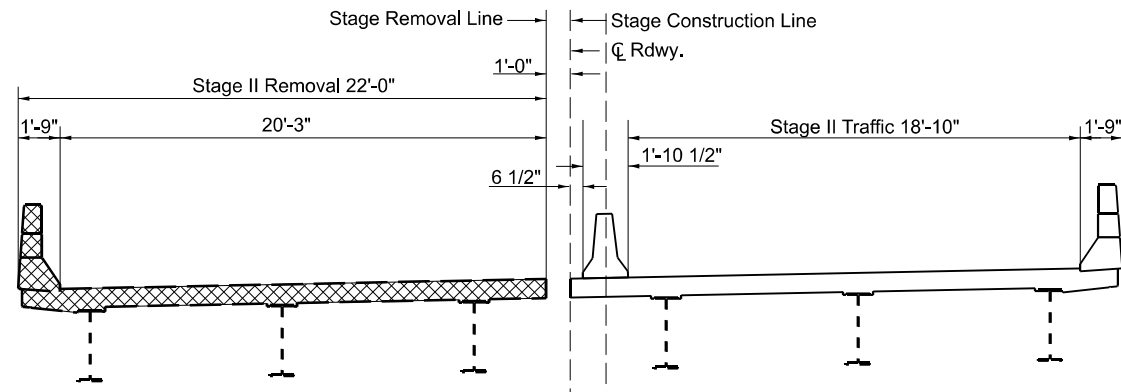
**TYPICAL BRIDGE SECTION - EXISTING**



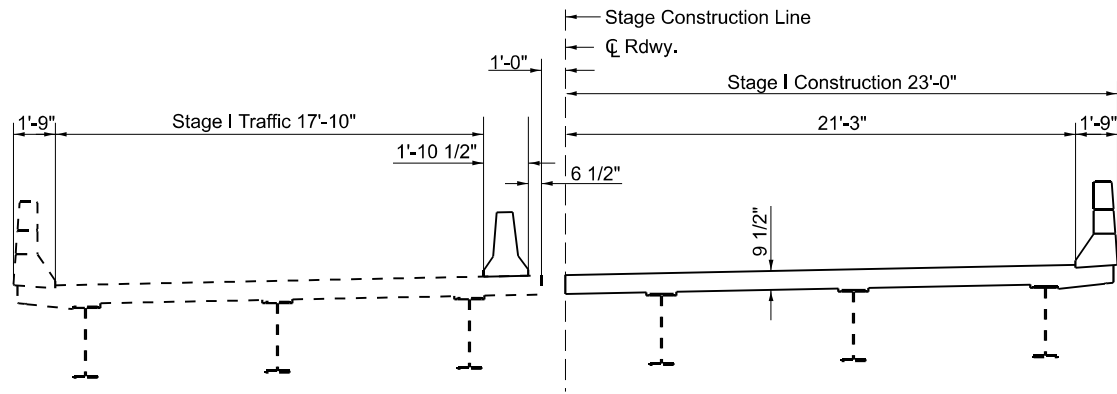
**TYPICAL BRIDGE SECTION - PROPOSED**



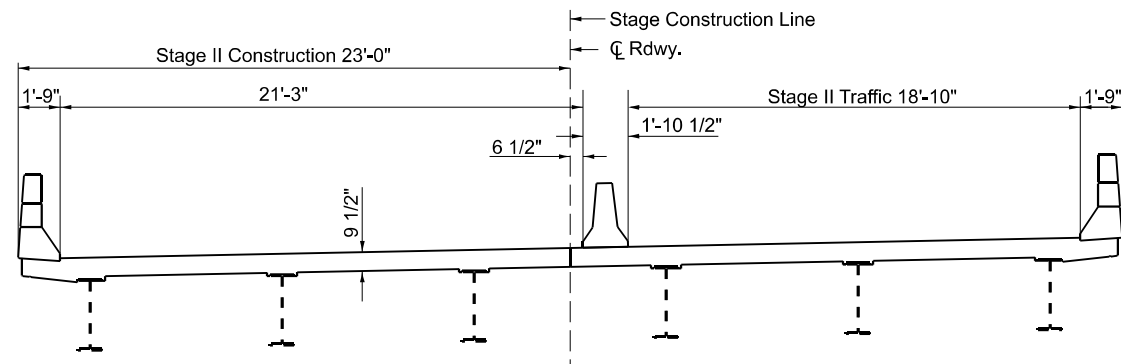
**STAGE I REMOVAL**  
(AT JOINT LOCATIONS ONLY)



**STAGE II REMOVAL**  
(AT JOINT LOCATIONS ONLY)



**STAGE I CONSTRUCTION**  
(AT JOINT LOCATIONS ONLY)



**STAGE II CONSTRUCTION**  
(AT JOINT LOCATIONS ONLY)

Concrete Removal

Notes: All Sections Looking Upstation

MODEL: Plan Sheet 18 (Sheet)  
FILE NAME: c:\pwworking\illinois.gov\derek.snider\0986417D9xxxx-ShtD-Typicals.dgn

USER NAME = derek.snider	DESIGNED -	REVISED -
	DRAWN -	REVISED -
	CHECKED -	REVISED -
PLOT DATE = 10/4/2024	DATE -	REVISED -

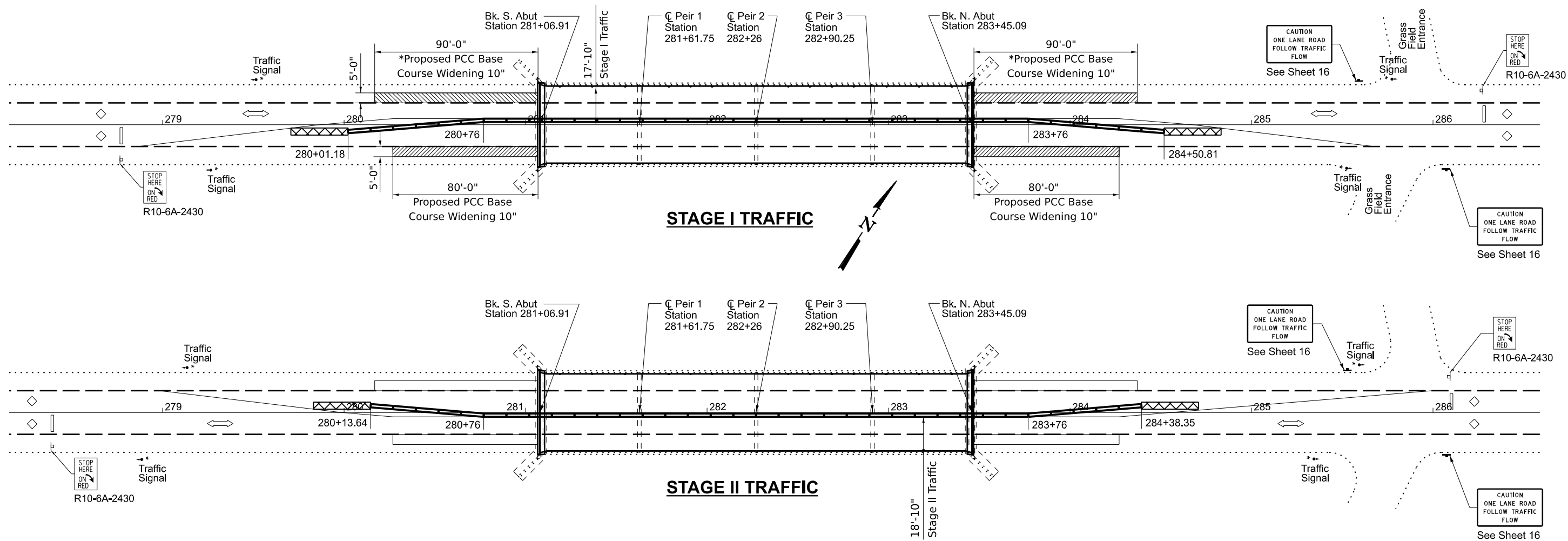
STATE OF ILLINOIS  
DEPARTMENT OF TRANSPORTATION

TYPICAL SECTIONS  
SN 073-0026

SCALE: SHEET 2 OF 6 SHEETS STA. TO STA.

F.A.P. RTE.	SECTION	COUNTY	TOTAL SHEETS	SHEET NO.
42	(8-1B,8-1B-1)BRR-1	PERRY	22	18
CONTRACT NO. 78A27				
ILLINOIS FED. AID PROJECT				

\* Must be installed pre stage I under traffic standard 701326.



MODEL: Plan Sheet 19 (Sheet)  
FILE NAME: c:\pwworking\illinois.gov\derek.snider\0986417D9xxx-ShtD-Typicals.dgn

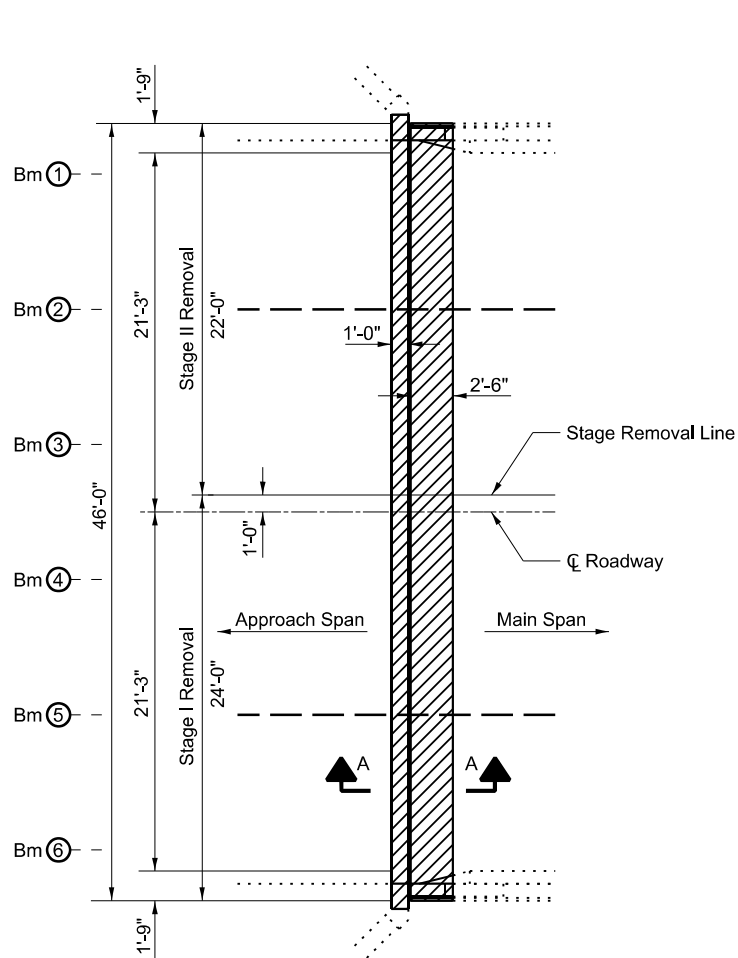
USER NAME	= derek.snider	DESIGNED	-	REVISED	-
DRAWN	-	REVIS	-	REVISED	-
CHECKED	-	REVIS	-	REVISED	-
DATE	-	REVIS	-	REVISED	-
PLOT DATE	= 10/4/2024	DATE	-	REVISED	-

STATE OF ILLINOIS  
DEPARTMENT OF TRANSPORTATION

STAGING PLAN  
SN 073-0026

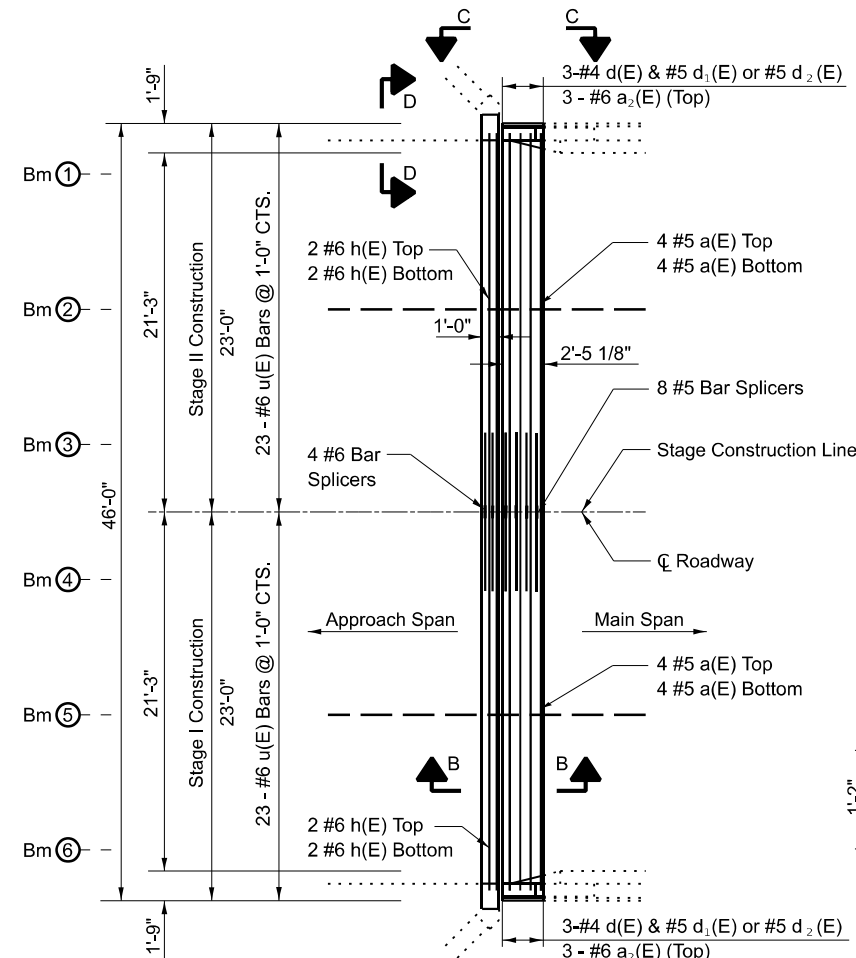
SCALE: SHEET 3 OF 6 SHEETS STA. TO STA.

F.A.P. RTE.	SECTION	COUNTY	TOTAL SHEETS	SHEET NO.
42	(8-1B,8-1B-1)BRR-1	PERRY	22	19
CONTRACT NO. 78A27				
ILLINOIS FED. AID PROJECT				

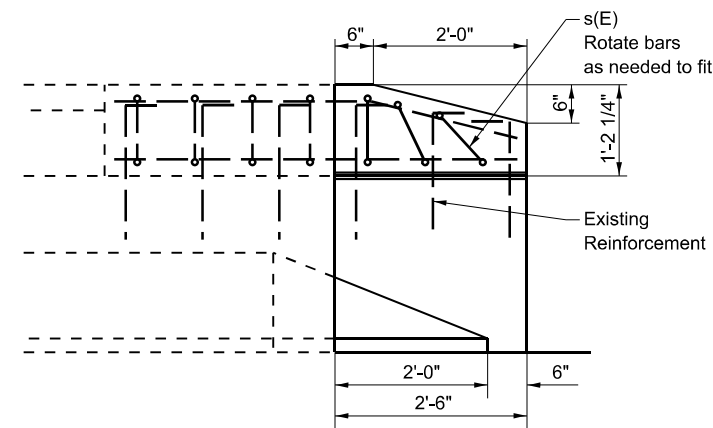


**JOINT AT SOUTH ABUTMENT  
SHOWING CONCRETE REMOVAL  
(NORTH ABUTMENT SIMILAR)**

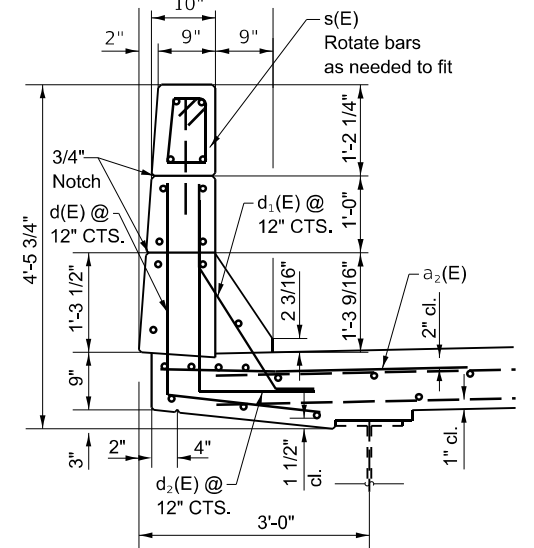
Concrete Removal



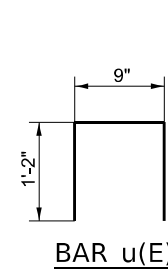
**JOINT AT SOUTH ABUTMENT  
SHOWING NEW CONCRETE  
(NORTH ABUTMENT SIMILAR)**



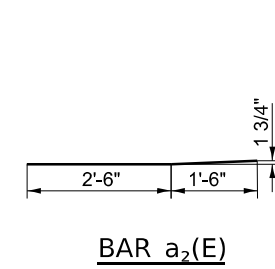
**SECTION THROUGH WINGWALL**



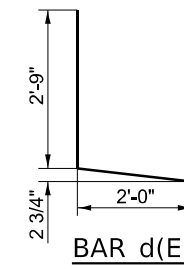
**SECTION THROUGH PARAPET**



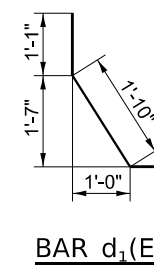
**BAR u(E)**



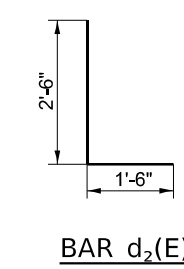
**BAR a<sub>2</sub>(E)**



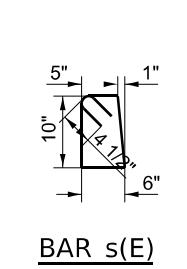
**BAR d(E)**



**BAR d<sub>1</sub>(E)**



**BAR d<sub>2</sub>(E)**

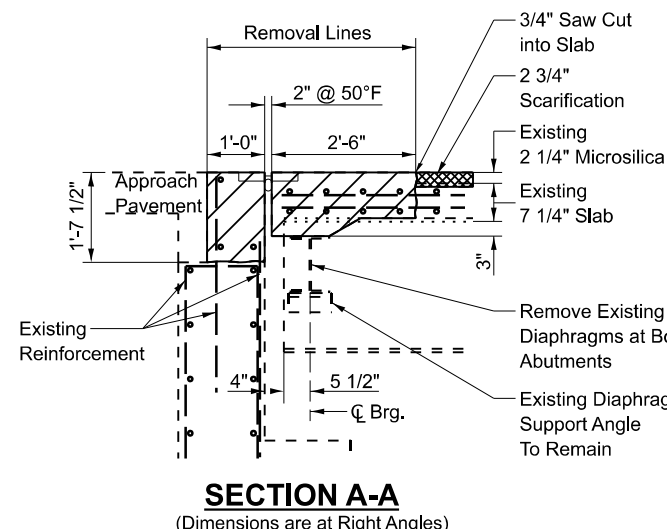


**BAR s(E)**

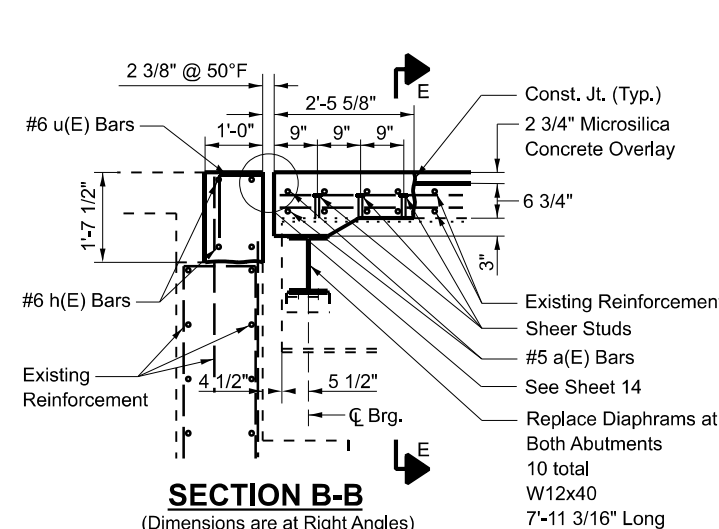
**BILL OF MATERIAL (BOTH ABUTMENT)**

Bar	No.	Size	Length	Shape
a(E)	32	#5	22'-6"	—
a <sub>2</sub> (E)	12	#6	4'-0"	—
d(E)	12	#4	4'-9"	L
d <sub>1</sub> (E)	12	#5	3'-5"	⌋
d <sub>2</sub> (E)	12	#5	4'-0"	L
h(E)	16	#6	22'-6"	—
s(E)	12	#4	3'-4"	⌋
u(E)	92	#6	3'-1"	⌋
Bar Splicer		Each	24	
Concrete Superstructure		Cu. Yd.	14.8	
Concrete Removal		Cu. Yd.	14.6	
Reinforcement Bars, Epoxy Coated		Pound	1190	
Structural Steel Removal		Pound	3200	
Furnishing and Erecting Structural Steel		Pound	3200	
Stud Shear Connectors		Each	108	

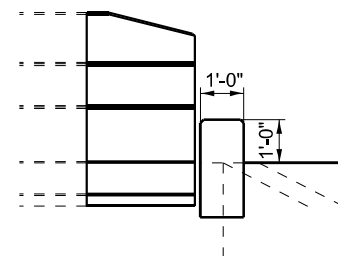
**JOINT RECONSTRUCTION DETAILS  
IL 127 OVER SWANWICK CREEK OVERFLOW  
FAP 42 - (8-1B,1B-1)BRR-1  
PERRY COUNTY  
STRUCTURE NO. 073-0026**



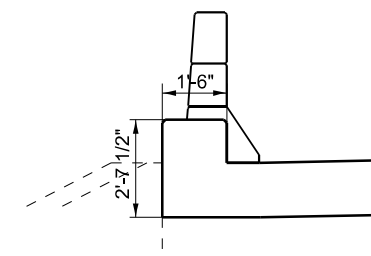
**SECTION A-A  
(Dimensions are at Right Angles)**



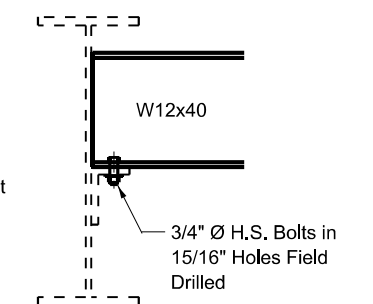
**SECTION B-B  
(Dimensions are at Right Angles)**



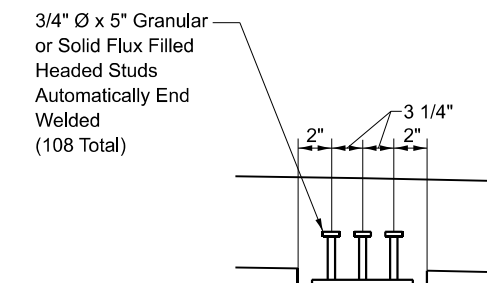
**SECTION C-C  
(Dimensions are at Right Angles)**



**SECTION D-D  
(Dimensions are at Right Angles)**



**SECTION AT DIAPHRAGM**



**SECTION AT BEAM END E-E**

**STATE OF ILLINOIS  
DEPARTMENT OF TRANSPORTATION**

**JOINT RECONSTRUCTION DETAILS  
SN 073-0026**

SCALE: SHEET 4 OF 6 SHEETS STA. TO STA.

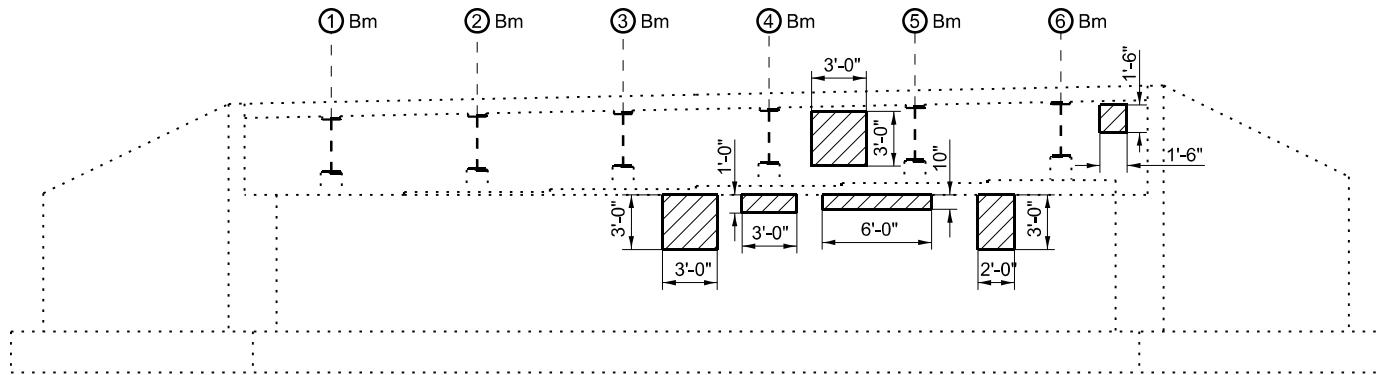
F.A.P. RTE.	SECTION	COUNTY	TOTAL SHEETS	SHEET NO.
42	(8-1B,8-1B-1)BRR-1	PERRY	22	20
CONTRACT NO. 78A27				
ILLINOIS FED. AID PROJECT				

USER NAME	= derek.snider
DESIGNED	-
DRAWN	-
CHECKED	-
DATE	-
PLOT DATE	= 10/4/2024

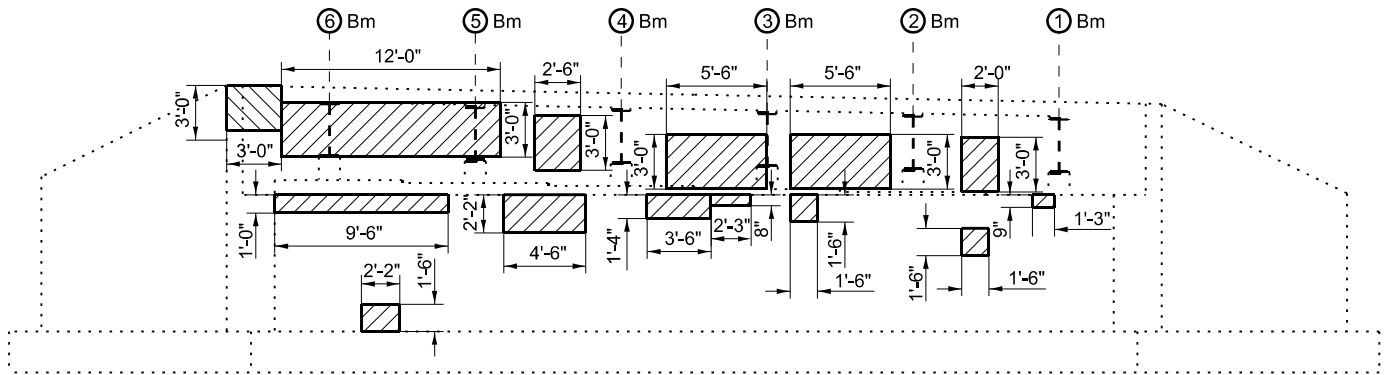
DESIGNED	-
REVISD	-
CHECKED	-
REVISD	-
DATE	-
REVISD	-

DESIGNED	-
REVISD	-
CHECKED	-
REVISD	-
DATE	-
REVISD	-

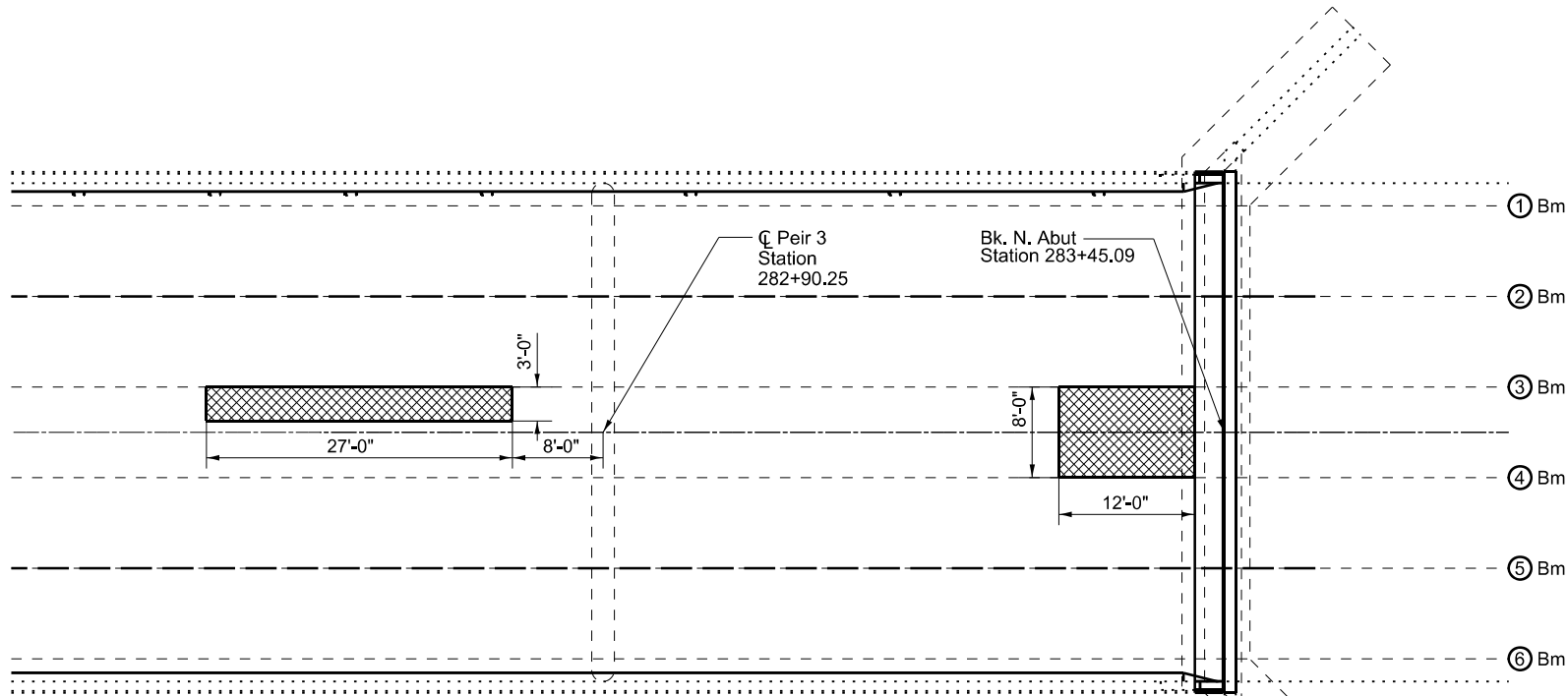
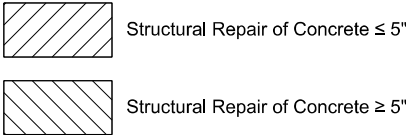




**ELEVATION AT SOUTH ABUTMENT**  
(Looking South)



**ELEVATION AT NORTH ABUTMENT**  
(Looking North)



**DECK SLAB REPAIR**



**BILL OF MATERIAL**

ITEM	UNIT	TOTAL
Deck Slab Repair (Full Depth, Type II)	Sq. Yd.	20
Structural Repair of Concrete (Depth ≤ 5 Inches)	Sq. Ft.	151
Structural Repair of Concrete (Depth ≥ 5 Inches)	Sq. Ft.	9

MODEL: Plan Sheet 21-1 (Sheet)  
FILE NAME: c:\pwworking\illinois.gov\derek.snider\0986417D9xxxx-ShtD-Typicals.dgn

USER NAME = derek.snider	DESIGNED -	REVISED -
	DRAWN -	REVISED -
	CHECKED -	REVISED -
PLOT DATE = 10/4/2024	DATE -	REVISED -

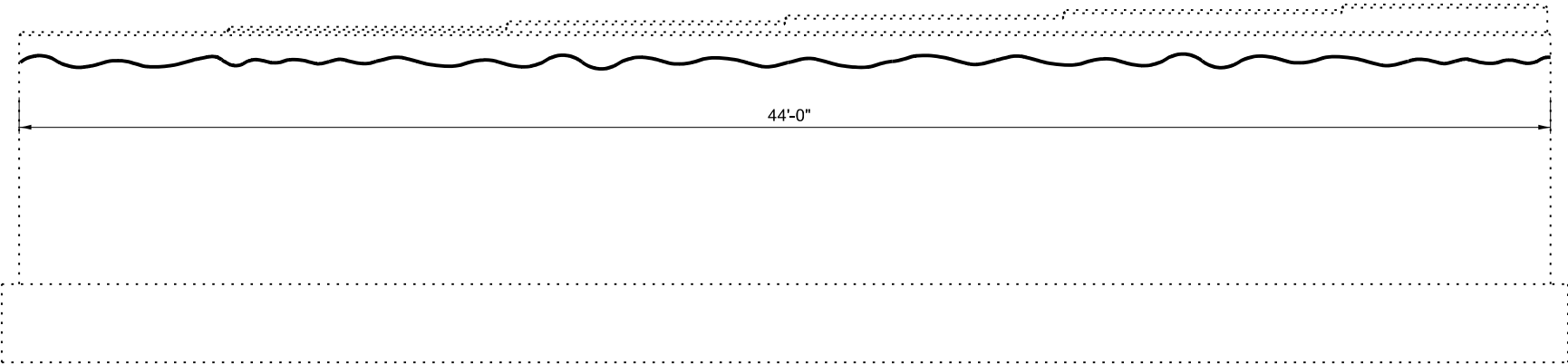
STATE OF ILLINOIS  
DEPARTMENT OF TRANSPORTATION

DECK SLAB PATCHING & STRUCTURAL REPAIR OF CONCRETE  
SN 073-0026

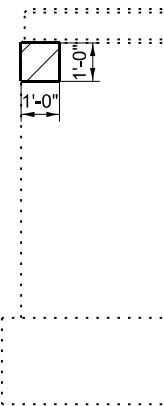
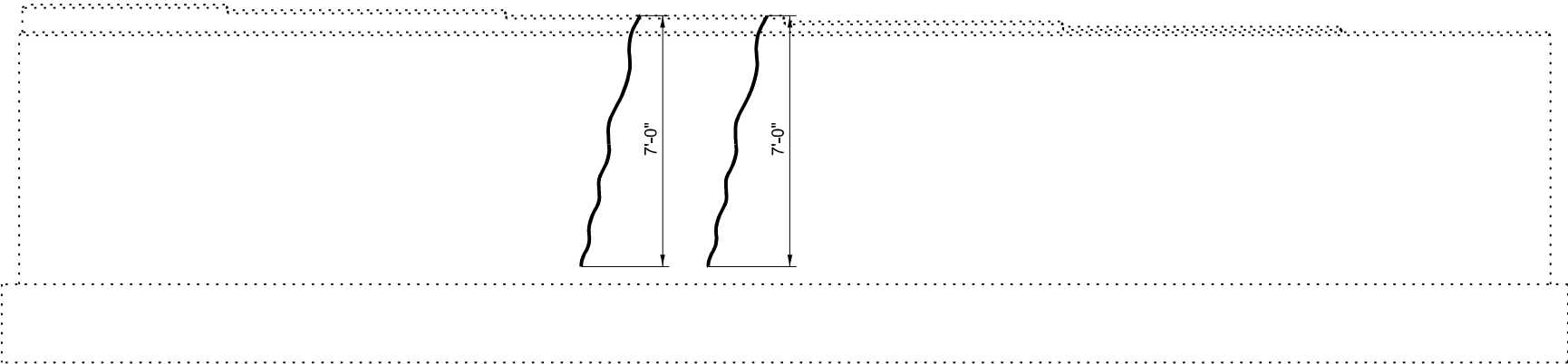
SCALE: SHEET 5 OF 6 SHEETS STA. TO STA.

F.A.P. RTE.	SECTION	COUNTY	TOTAL SHEETS	SHEET NO.
42	(8-1B,8-1B-1)BRR-1	PERRY	22	21
CONTRACT NO. 78A27				
ILLINOIS FED. AID PROJECT				

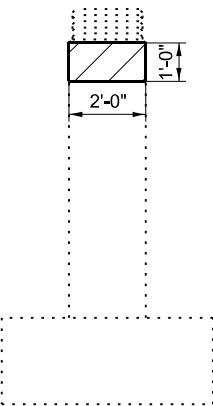
MODEL: Plan Sheet 22 (Sheet)  
FILE NAME: c:\pwworking\illinois.gov\_derek.snider@d0986417D9xxxx-ShtD-Typicals.dgn



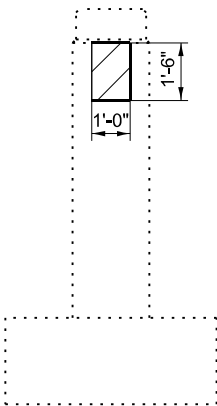
ELEVATION AT PEIR 1



ELEVATION AT PEIR 2  
(Looking South)





ELEVATION AT WEST END OF PEIR 3  
(Looking East)



ELEVATION AT EAST END OF PEIR 3  
(Looking West)

BILL OF MATERIAL		
ITEM	UNIT	TOTAL
Epoxy Crack Injection	Foot	58
Structural Repair of Concrete (Depth ≤ 5 Inches)	Sq. Ft.	5

-  Epoxy Crack Injection
-  Structural Repair of Concrete ≤ 5"

USER NAME = derek.snider	DESIGNED -	REVISED -
	DRAWN -	REVISED -
	CHECKED -	REVISED -
PLOT DATE = 10/4/2024	DATE -	REVISED -

STATE OF ILLINOIS  
DEPARTMENT OF TRANSPORTATION

PEIR STRUCTURAL REPAIR OF CONCRETE SN 073-0026		
SCALE:	SHEET 6 OF 6 SHEETS	STA. TO STA.

F.A.P RTE.	SECTION	COUNTY	TOTAL SHEETS	SHEET NO.
42	(8-1B,8-1B-1)BRR-1	PERRY	22	22
CONTRACT NO. 78A27				
ILLINOIS FED. AID PROJECT				