

STATE OF ILLINOIS  
DEPARTMENT OF TRANSPORTATION

F.A.I. RTE.	SECTION	COUNTY	TOTAL SHEETS	SHEET NO.
70	60-7BJR-BDR	MADISON	26	1
		ILLINOIS	CONTRACT NO. 76U07	

INDEX OF SHEETS

- 1 COVER SHEET
- 2 GENERAL NOTES
- 3 - 5 SUMMARY OF QUANTITIES
- 6 TYPICAL SECTIONS
- 7 SCHEDULE OF QUANTITIES
- 8 PLAN SHEETS
- 9 - 12 TRAFFIC CONTROL
- 13 - 15 DETOUR PLAN
- 16 - 17 DETAILS
- 18 - 26 STRUCTURE REPAIR PLANS

**PROPOSED  
HIGHWAY PLANS**

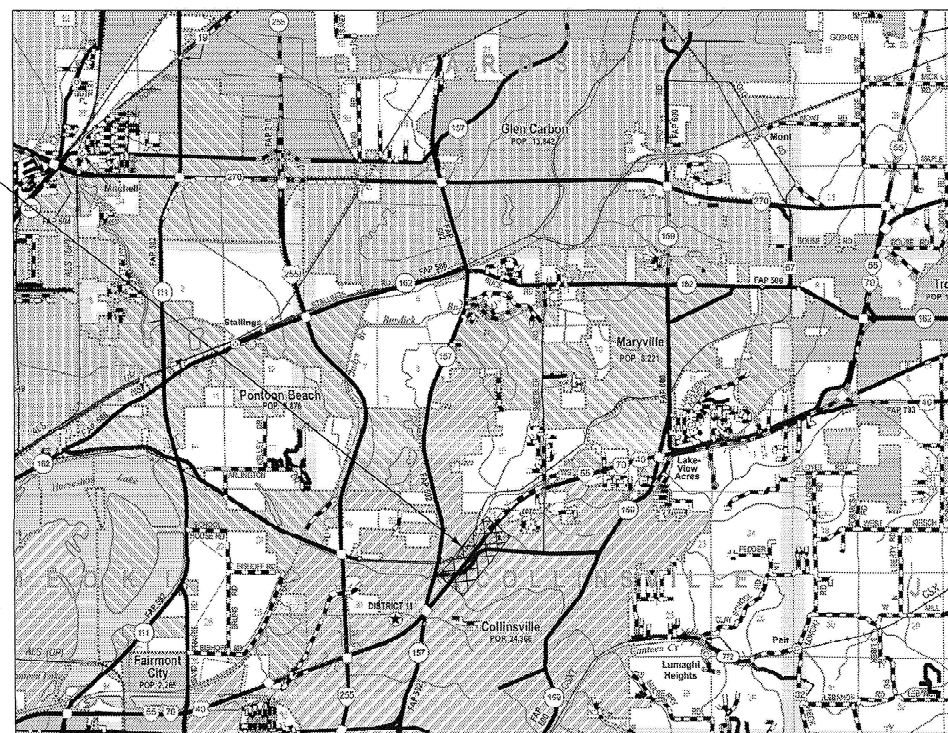
**FAI ROUTE 70 (I-55/I-70/US40)  
SECTION 60-7BJR-BDR  
PROJECT NHPP-UL93(962)  
BRIDGE JOINT REPLACE/REPAIR, BRIDGE DECK OVERLAY  
MADISON COUNTY**

C-98-161-24



DESIGN FIRM  
REGISTRATION NUMBER  
184004564-0014  
CONSULTING ENGINEERS  
1401 BRANDING AVENUE, SUITE 365  
DOWNERS GROVE, ILLINOIS 60515 :: (312) 621-8777

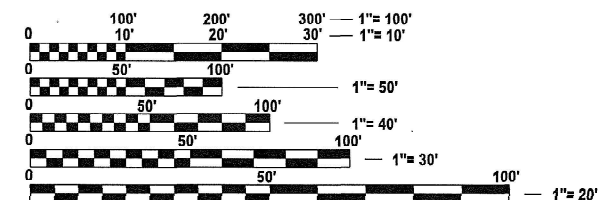
PROJECT LOCATION  
SN 060-0014  
SN 060-0015  
LAT: 38°41'14.18"N  
LONG: 90°0'16.61"W



NOT TO SCALE

PROJECT AREA -

GROSS LENGTH = 525 FT. = 0.099 MILE  
NET LENGTH = 525 FT. = 0.099 MILE

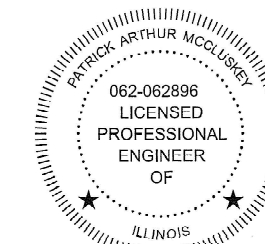


FULL SIZE PLANS HAVE BEEN PREPARED USING STANDARD ENGINEERING SCALES. REDUCED SIZED PLANS WILL NOT CONFORM TO STANDARD SCALES. IN MAKING MEASUREMENTS ON REDUCED PLANS, THE ABOVE SCALES MAY BE USED.

J.U.L.I.E.  
JOINT UTILITY LOCATION INFORMATION FOR EXCAVATION  
1-800-892-0123  
OR 811

PROJECT ENGINEER: BILLIE OWEN, P.E.  
PROJECT MANAGER: MEIWU AN, P.E.

CONTRACT NO. 76U07



DATE: 07/24/24  
SEAL EXPIRES: 11/30/25  
APPLIES TO SHEETS: 1 - 17

TRAFFIC DATA:  
2023 ADT = 46,000 (ACTUAL)  
2025 ADT = 47,000      2045 ADT = 57,300  
PV = 74.2%    SU = 3.0%    MU = 22.8%  
FUNCTIONAL CLASS = INTERSTATE

STATE OF ILLINOIS  
DEPARTMENT OF TRANSPORTATION

SUBMITTED Aug 2 2024  
Kie H P  
REGIONAL ENGINEER

October 4, 2024  
Joe E. A. Elk  
ENGINEER OF DESIGN AND ENVIRONMENT

October 4, 2024  
James J. Gu  
DIRECTOR OF HIGHWAYS PROJECT IMPLEMENTATION

PRINTED BY THE AUTHORITY  
OF THE STATE OF ILLINOIS

**GENERAL NOTES**

- "ROAD CONSTRUCTION AHEAD" SIGNS SHALL BE PLACED AT INTERCHANGES, ENTRANCES, AND SIDE STREETS WHERE WORK IS BEING CONDUCTED AS DIRECTED BY THE RESIDENT ENGINEER. ALL CONSTRUCTION SIGNS SHALL BE FLUORESCENT ORANGE. THIS SHALL BE INCLUDED IN THE COST OF THE TRAFFIC CONTROL AND PROTECTION. THESE SIGNS SHALL BE 48" X 48".
- IN ADDITION TO THE REQUIREMENTS OF ARTICLE 107.16, THE CONTRACTOR SHALL PROTECT THE SURFACE OF ALL BRIDGE DECKS AND BRIDGE APPROACH PAVEMENTS IN A MANNER SATISFACTORY TO THE ENGINEER BEFORE ANY EQUIPMENT IS ALLOWED TO CROSS THE STRUCTURE. PROTECTION SHALL BE PROVIDED FOR ALL EQUIPMENT AS DEFINED IN ARTICLE 107.16 REGARDLESS IF TRACK MOUNTED OR WHEELED.
- THE CONTRACTOR AND THE ENGINEER SHALL BE AWARE THAT NO SURVEY WAS PERFORMED FOR THIS PROJECT. THE STATIONING AND TOPO SHOWN IN THE PLANS WERE CREATED USING MICROFILM AND FIELD MEASUREMENTS MADE BY DESIGN PERSONNEL. BOTH SHALL BE CONSIDERED APPROXIMATE.
- THE RESIDENT ENGINEER SHALL VERIFY THE EXISTENCE OF HIGHWAY LIGHTING, INTELLIGENT TRANSPORTATION SYSTEMS (I.T.S.) UTILITIES, AND/OR ELECTRICAL CABLES ASSOCIATED WITH TRAFFIC SIGNALS WITHIN THE PROJECT LIMITS. IF ANY OF THESE EXIST WITHIN THE PROJECT LIMITS, AND IF THESE ITEMS REQUIRE LOCATING, THE CONTRACTOR SHALL BE DIRECTED TO DO SO ACCORDING TO SECTION 803 OF THE STANDARD SPECIFICATIONS. THIS WORK SHALL BE PAID FOR ACCORDING TO ARTICLE 109.04 OF THE STANDARD SPECIFICATIONS.
- THE DEPARTMENT STRONGLY ENCOURAGES THE PRIME CONTRACTOR AND THEIR APPROVED SUB-CONTRACTORS TO HIRE MINORITY, WOMEN AND DISADVANTAGED INDIVIDUALS FROM ITS FEDERALLY FUNDED HIGHWAY CONSTRUCTION CAREERS TRAINING PROGRAM (HCCTP) TO HELP MEET WORKFORCE AND TRAINEE GOALS. THIS PROGRAM IS TRAINING MINORITIES, WOMEN AND DISADVANTAGED INDIVIDUALS IN HIGHWAY CONSTRUCTION-RELATED SKILLS, E.G., MATH FOR THE TRADES, JOB READINESS, TECHNICAL SKILLS COURSEWORK (CARPENTRY, CONCRETE FLATWORK, BLUEPRINT READING, SITE PLANS, SITE WORK, TOOLS USE, ETC.) AND OSHA 10 HOUR CERTIFICATION, TO PREPARE THEM FOR A CAREER IN THE HIGHWAY CONSTRUCTION TRADES. GRADUATES ARE WELL-TRAINED AND READY TO BECOME PRODUCTIVITY ENTRY-LEVEL CONSTRUCTION WORKERS. CONTACT THE DISTRICT 8 EEO OFFICE AT 618-346-3360 AND/OR THE HCCP COORDINATOR AT 618-874-6528 TO LEARN MORE ABOUT THE PROGRAM AND FOR ASSISTANCE IN MEETING WORKFORCE AND TRAINEE GOALS.
- ALL TURF AREAS DISTURBED BY THE CONTRACTOR SHALL BE SEEDED WITH THE APPROPRIATE EROSION CONTROL, AS DIRECTED BY THE ENGINEER, AT THE CONTRACTOR'S EXPENSE.
- THE INTENT OF THE MILLING IS TO REMOVE THE HMA RESURFACING ONLY. THE UNDERLYING CONCRETE SHALL NOT BE DISTURBED.
- THE PROPOSED PAVEMENT MARKING SHALL MATCH THE LOCATIONS OF THE EXISTING PAVEMENT MARKING, AS DIRECTED BY THE ENGINEER.
- UTILITIES KNOWN TO HAVE FACILITIES WITHIN THE PROJECT AREA:  
 AMEREN ILLINOIS  
 AT&T ILLINOIS  
 CHARTER COMMUNICATIONS, INC.  
 CLEARWAVE FIBER LLC  
 DEPARTMENT OF CENTRAL MANAGEMENT SERVICES  
 CITY OF COLLINSVILLE  
 VERIZON BUSINESS  
 CITY OF TROY  
 WINDSTREAM KDL, INC.

**HIGHWAY STANDARDS**

000001-08	STANDARD SYMBOLS, ABBREVIATIONS AND PATTERNS
001001-02	AREAS OF REINFORCEMENT BARS
001006	DECIMAL OF AN INCH AND OF A FOOT
420001-10	<b>PAVEMENT JOINTS</b>
610001-09	SHOULDER INLET WITH CURB
642001-03	SHOULDER RUMBLE STRIPS, 16 IN.
701101-05	OFF-RD OPERATIONS, MULTILANE, MORE THAN 15' (4.5m) TO 24" (600mm) FROM PAVEMENT EDGE
701106-02	OFF-RD OPERATIONS, MULTILANE, MORE THAN 15' (4.5m) AWAY
701400-12	APPROACH TO LANE CLOSURE FREEWAY EXPRESSWAY
701401-13	LANE CLOSURE FREEWAY/EXPRESSWAY
701428-01	TRAFFIC CONTROL SETUP REMOVAL FREEWAY EXPRESSWAY
701446-11	TWO LANE CLOSURE FREEWAY EXPRESSWAY
701451-05	RAMP CLOSURE FREEWAY EXPRESSWAY
701606-10	URBAN SINGLE LANE CLOSURE, MULTILANE, 2W WITH MOUNTABLE MEDIAN
701901-09	TRAFFIC CONTROL DEVICES
780001-05	TYPICAL PAVEMENT MARKINGS
781001-04	TYPICAL APPLICATIONS RAISED REFLECTIVE PAVEMENT MARKERS
782006-01	GUARDRAIL AND BARRIER WALL REFLECTOR MOUNTING DETAILS
701411-09	LANE CLOSURE, MULTILANE, AT ENTRANCE OR EXIT RAMP, FOR SPEEDS > 45 MPH

**COMMITMENTS**

NONE

**MIXTURE REQUIREMENTS**

MIXTURE USE(S):	POLYMERIZED SURFACE	POLYMERIZED BINDER	SHOULDER (SURFACE)
AC/PG:	SBS PG 70-28	SBS PG 70-28	PG 64-22
DESIGN AIR VOIDS:	4.0% @ Ndes = 90	4.0% @ Ndes = 90	4.0% @ Ndes = 30
MIXTURE COMPOSITION: (GRADATION MIXTURE)	IL 9.5	IL 19.0	IL 9.5L
FRICTION AGGREGATE	MIXTURE "E"	MIXTURE "B"	
QUALITY MGMT PROGRAM	QC/QA	QC/QA	QC/QA
MATTRANDEV REQUIRED?	NO	NO	NO

PLAN QUANTITIES FOR HOT-MIX ASPHALT ITEMS ARE CALCULATED USING A UNIT WEIGHT OF 112 LB/SQ YD/IN (59.8 KG/SQ M/25MM THICKNESS).

ANY QCP PAY ITEM THAT HAS A QUANTITY OF 1600 TONS OR LESS WILL HAVE TWO SUBLOTS EACH OF WHICH WILL BE HALF OF THE PLAN QUANTITY OR HALF OF THE ADJUSTED QUANTITY BY THE RESIDENT ENGINEER/TECHNICIAN.

REV - MS

DATE PLOTTED = 10/1/2024 11:46:31 AM  
 PEN TABLE = \$PENTBLS\$  
 PLOT CONFIG = \$PLOTDRWS\$  
 PLOT COVER = \$PLOTDRWS\$  
 FILE NAME = p:\gpcorp\paw\_bentley.com\gpcorp\paw\_01\Documents\Project21-1017.015.PTB.197-041.WO.1520.Design\CADD\Sheets\BDR76U07-ahf-gencodes.dgn



USER NAME = thermann	DESIGNED - TH	REVISED -
PLOT SCALE = 4.99999000' / in.	DRAWN - TH	REVISED -
PLOT DATE = 10/1/2024	CHECKED - PM	REVISED -
	DATE - 10/01/2024	REVISED -

**STATE OF ILLINOIS  
DEPARTMENT OF TRANSPORTATION**

**GENERAL NOTES**

SCALE: SHEET 1 OF 1 SHEETS STA. TO STA.

F.A.I. RTE.	SECTION	COUNTY	TOTAL SHEETS	SHEET NO.
70	60-7BJR-BDR	MADISON	26	2
CONTRACT NO.			76U07	
ILLINOIS		FED. AID PROJECT		

CODE NO.	ITEM	UNIT	TOTAL QUANTITY	CONSTRUCTION CODE	
				90% FED 10% STATE BRIDGE 0047	90% FED 10% STATE BRIDGE 0047
				060-0014	060-0015
40600982	HOT-MIX ASPHALT SURFACE REMOVAL - BUTT JOINT	SQ YD	912	456	456
40603240	POLYMERIZED HOT-MIX ASPHALT BINDER COURSE, IL-19.0, N90	TON	180.5	90.2	90.3
40604174	POLYMERIZED HOT-MIX ASPHALT SURFACE COURSE, IL-9.5, MIX "E", N90	TON	160.5	80.2	80.3
40800029	BITUMINOUS MATERIALS (TACK COAT)	POUND	1137	577	560
44000158	HOT-MIX ASPHALT SURFACE REMOVAL, 2 1/4"	SQ YD	1433	716	717
48203100	HOT-MIX ASPHALT SHOULDERS	TON	109.1	56.9	52.2
50102400	CONCRETE REMOVAL	CU YD	89.4	44.7	44.7
50157300	PROTECTIVE SHIELD	SQ YD	1054	527	527
50300255	CONCRETE SUPERSTRUCTURE	CU YD	101.2	50.6	50.6
50300300	PROTECTIVE COAT	SQ YD	2768	1384	1384
50800205	REINFORCEMENT BARS, EPOXY COATED	POUND	8230	4115	4115
52000110	PREFORMED JOINT STRIP SEAL	FOOT	474	237	237
64200116	SHOULDER RUMBLE STRIPS, 16 INCH	FOOT	960	480	480

DATE PLOTTED = 7/24/2024 1:10:37 PM  
 PEN TABLE = \$PENTBL\$  
 PLOT CONFIG = \$PLOT\$  
 FILE NAME = p:\projects\per\barney\com\gpcos-pw-01\Documents\Project\21-1017-015-PTB-1R-041-WO-1520-Design\CADD\Sheet\076U07-ah-S00.dgn



USER NAME = thermann	DESIGNED - TH	REVISED -
	DRAWN - TH	REVISED -
PLOT SCALE = 0.99999800 / in.	CHECKED - PM	REVISED -
PLOT DATE = 7/24/2024	DATE - 07/26/2024	REVISED -

**STATE OF ILLINOIS**  
**DEPARTMENT OF TRANSPORTATION**

**SUMMARY OF QUANTITIES**

SCALE: SHEET 1 OF 3 SHEETS STA. TO STA.

F.A.I. RTE.	SECTION	COUNTY	TOTAL SHEETS	SHEET NO.
70	60-7BJR-BDR	MADISON	26	3
CONTRACT NO.			76U07	
ILLINOIS		FED. AID PROJECT		

REV - MS

CODE NO.	ITEM	UNIT	TOTAL QUANTITY	CONSTRUCTION CODE	
				90% FED 10% STATE BRIDGE 0047	90% FED 10% STATE BRIDGE 0047
				060-0014	060-0015
67000400	ENGINEER'S FIELD OFFICE, TYPE A	CAL MO	6	3	3
67100100	MOBILIZATION	L SUM	1	0.5	0.5
70102625	TRAFFIC CONTROL AND PROTECTION, STANDARD 701606	L SUM	1	0.5	0.5
70300100	SHORT TERM PAVEMENT MARKING	FOOT	152	76	76
70300150	SHORT TERM PAVEMENT MARKING REMOVAL	SQ FT	50	25	25
78004630	PREFORMED PLASTIC PAVEMENT MARKING, TYPE D - STANDARD - LINE 6"	FOOT	2368	1184	1184
* 78011035	GROOVING FOR RECESSED PAVEMENT MARKING 7"	FOOT	2368	1184	1184
* 78100100	RAISED REFLECTIVE PAVEMENT MARKER	EACH	32	16	16
* 78200011	BARRIER WALL REFLECTORS, TYPE C	EACH	28	14	14
78300200	RAISED REFLECTIVE PAVEMENT MARKER REMOVAL	EACH	52	26	26
Z0012132	BRIDGE DECK SCARIFICATION 1"	SQ YD	2132	1066	1066
Z0012168	BRIDGE DECK MICROSILICA CONCRETE OVERLAY 3"	SQ YD	2132	1066	1066
Z0012754	STRUCTURAL REPAIR OF CONCRETE (DEPTH EQUAL TO OR LESS THAN 5 INCHES)	SQ FT	97.3	40.5	56.8
Z0013798	CONSTRUCTION LAYOUT	L SUM	1	0.5	0.5

\* SPECIALTY ITEM

REV - MS

DATE PLOTTED = 7/24/2024 1:10:36 PM  
 PEN TABLE = \$PENTBLS\$  
 PLOT CONFIG = \$PLOT\$  
 FILE NAME = p:\projects\per\barney\com\gpcos\pce-01\Documents\Project\21-1017\_015\_P13\_1R-041\_WO\_1520\_Design\CADD\Sheet\076U07-MS-SQ.dgn



USER NAME = thermann	DESIGNED - TH	REVISED -
PLOT SCALE = 0.99999800 / in.	DRAWN - TH	REVISED -
PLOT DATE = 7/24/2024	CHECKED - PM	REVISED -
	DATE - 07/26/2024	REVISED -

STATE OF ILLINOIS  
 DEPARTMENT OF TRANSPORTATION

SUMMARY OF QUANTITIES

SCALE: SHEET 2 OF 3 SHEETS STA. TO STA.

F.A.I. RTE.	SECTION	COUNTY	TOTAL SHEETS	SHEET NO.
70	60-7BJR-BDR	MADISON	26	4
CONTRACT NO.			76U07	
ILLINOIS FED. AID PROJECT				



CODE NO.	ITEM	UNIT	TOTAL QUANTITY	CONSTRUCTION CODE	
				90% FED 10% STATE BRIDGE	90% FED 10% STATE BRIDGE
				0047	0047
				060-0014	060-0015
Z0016001	DECK SLAB REPAIR (FULL DEPTH, TYPE I)	SQ YD	2.6	0.7	1.9
Z0016002	DECK SLAB REPAIR (FULL DEPTH, TYPE II)	SQ YD	80.2	36.1	44.1
Z0016702	DETOUR SIGNING	L SUM	1	0.5	0.5
X6020050	INLET BOXES TO BE ADJUSTED (SPECIAL)	EACH	4	2	2
Z0029090	DIAMOND GRINDING (BRIDGE SECTION)	SQ YD	2088	1044	1044
Ø Z0076600	TRAINEES	HOUR	1000	1000	
X5030250	BRIDGE DECK GROOVING (LONGITUDINAL)	SQ YD	1359	679.5	679.5
Ø Z0076604	TRAINEES TRAINING PROGRAM GRADUATE	HOUR	1000	1000	
X0325494	INTERSTATE DIRECTIONAL CLOSURE	EACH	2	1	1

Ø 0042

DATE PLOTTED = 7/24/2024 1:10:38 PM  
 PEN TABLE = \$PENTBL\$  
 PLOT CONFIG = \$PLOT\$  
 FILE NAME = p:\gpcos-raw\barney.com\gpcos-pw-01\Documents\Projects\21-1017-015-PTB 1R-041-WO-1520 Design\CADD\Sheets\0776U07-ah-SQ0.dgn



USER NAME = thermann	DESIGNED - TH	REVISED -
	DRAWN - TH	REVISED -
PLOT SCALE = 0.99999800 / in.	CHECKED - PM	REVISED -
PLOT DATE = 7/24/2024	DATE - 07/26/2024	REVISED -

**STATE OF ILLINOIS  
DEPARTMENT OF TRANSPORTATION**

**SUMMARY OF QUANTITIES**

SCALE: SHEET 3 OF 3 SHEETS STA. TO STA.

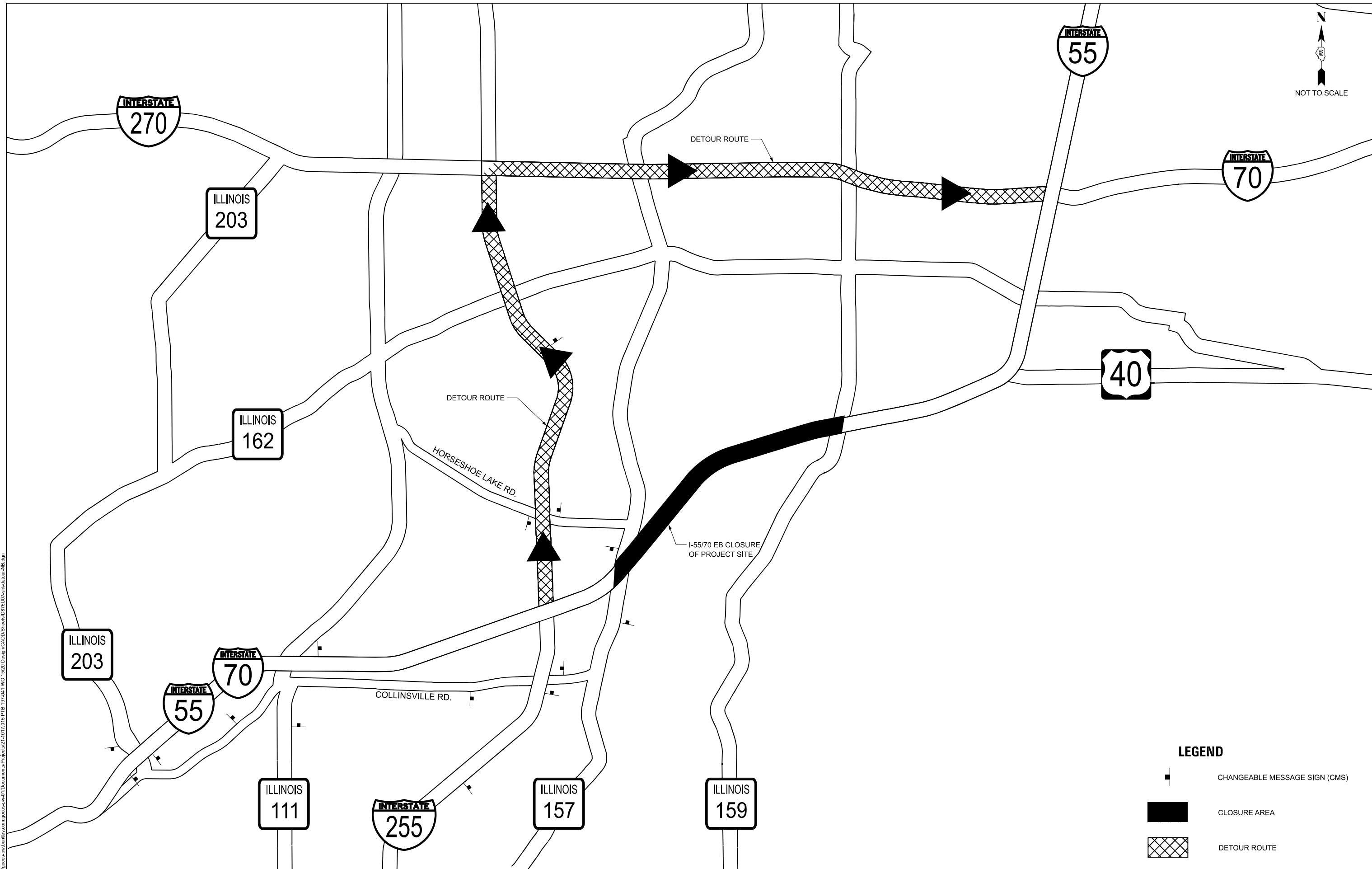
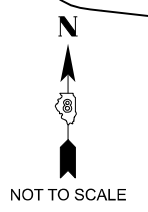
F.A.I. RTE.	SECTION	COUNTY	TOTAL SHEETS	SHEET NO.
70	60-7BJR-BDR	MADISON	26	5
CONTRACT NO.			76U07	
ILLINOIS FED. AID PROJECT				

REV - MS


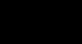









**LEGEND**

-  CHANGEABLE MESSAGE SIGN (CMS)
-  CLOSURE AREA
-  DETOUR ROUTE

DATE PLOTTED = 10/1/2024 11:47:58 AM  
 PEN TABLE = SPENTBLSS  
 PLOT CONFIG = SPTDRVSS  
 FILE NAME = p:\projects\2024\10\01\15\1520\Design\CADD\Sheets\DR76U07-4b-fk-closure-NE.dgn

GONZALEZ COMPANIES, LLC  
 PRO. ENGINEER 184004564-0014

USER NAME = thermann	DESIGNED - TH	REVISED -
	DRAWN - TH	REVISED -
PLOT SCALE = 4.99999000' / in.	CHECKED - PM	REVISED -
PLOT DATE = 10/1/2024	DATE - 10/01/2024	REVISED -

**STATE OF ILLINOIS**  
**DEPARTMENT OF TRANSPORTATION**

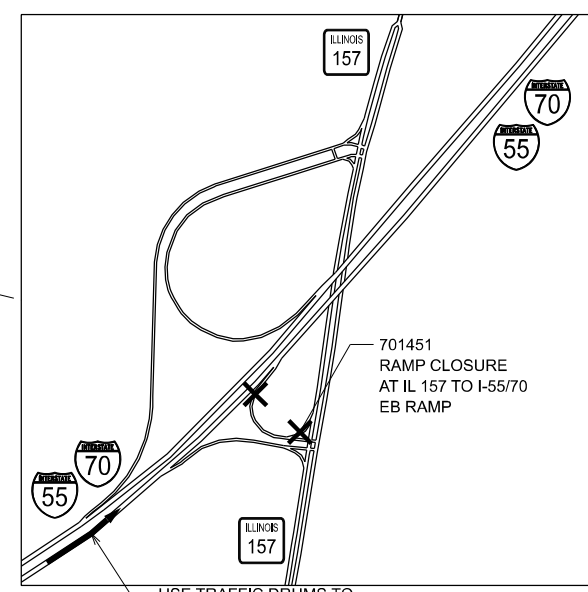
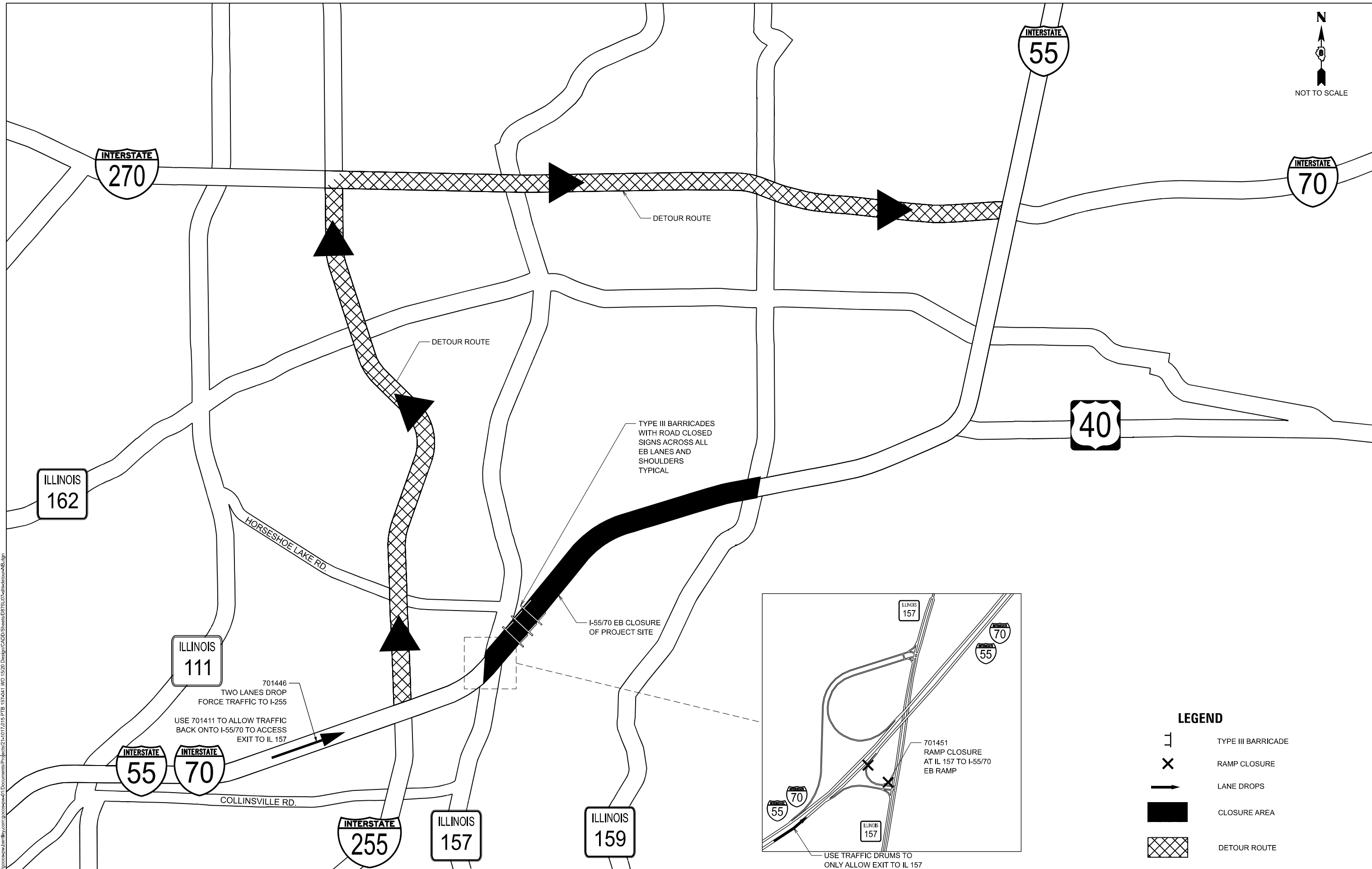
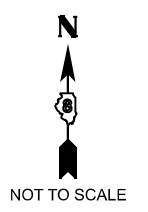
**TRAFFIC CONTROL**  
**CMS LOCATIONS FOR INTERSTATE EB CLOSURE**

SCALE: SHEET 1 OF 4 SHEETS STA. TO STA.






F.A.I. RTE.	SECTION	COUNTY	TOTAL SHEETS	SHEET NO.
70	60-7BJR-BDR	MADISON	26	9
CONTRACT NO.			76U07	
ILLINOIS		FED. AID PROJECT		







**LEGEND**

-  TYPE III BARRICADE
-  RAMP CLOSURE
-  LANE DROPS
-  CLOSURE AREA
-  DETOUR ROUTE

DATE PLOTTED = 11/13/2024 11:21:17 AM  
 PEN TABLE = SPENTBLSS  
 PLOT CONFIG = SPLDRVSS  
 FILE NAME = I:\projects\76007\76007.dwg



USER NAME = thermann	DESIGNED - TH	REVISED -
PLOT SCALE = 4.99999000' / in.	DRAWN - TH	REVISED -
PLOT DATE = 11/13/2024	CHECKED - PM	REVISED -
	DATE - 11/13/2024	REVISED -

**STATE OF ILLINOIS  
DEPARTMENT OF TRANSPORTATION**

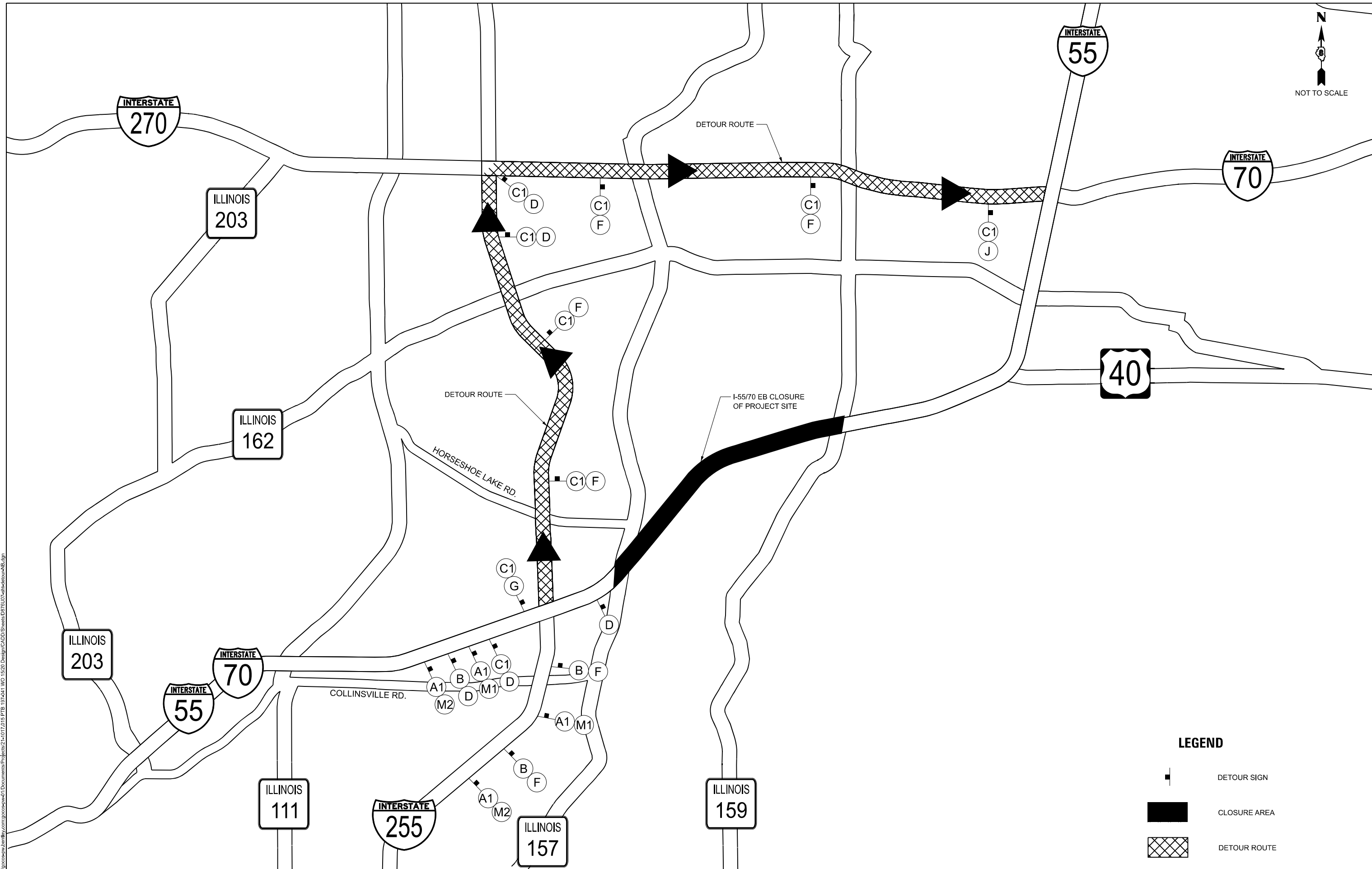
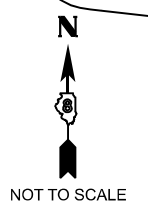
**TRAFFIC CONTROL  
EB RAMP CLOSURE AND LANE DROP LOCATIONS**

SCALE: SHEET 3 OF 4 SHEETS STA. TO STA.


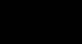

F.A.I. RTE.	SECTION	COUNTY	TOTAL SHEETS	SHEET NO.
70	60-7BJR-BDR	MADISON	26	11
CONTRACT NO. 76U07				
ILLINOIS FED. AID PROJECT				







**LEGEND**

-  DETOUR SIGN
-  CLOSURE AREA
-  DETOUR ROUTE

DATE PLOTTED = 10/1/2024 11:48:38 AM  
 PEN TABLE = SPENTBLSS  
 PLOT CONFIG = SPLDRVRS  
 FILE NAME = p:\projects\new\berkeley\comps\spc\p1\Documents\Project2\1-017.015.PTB 107-241.WC 1520 Design\CADD\Sheets\DR76U07-eb-detour-NB.dgn



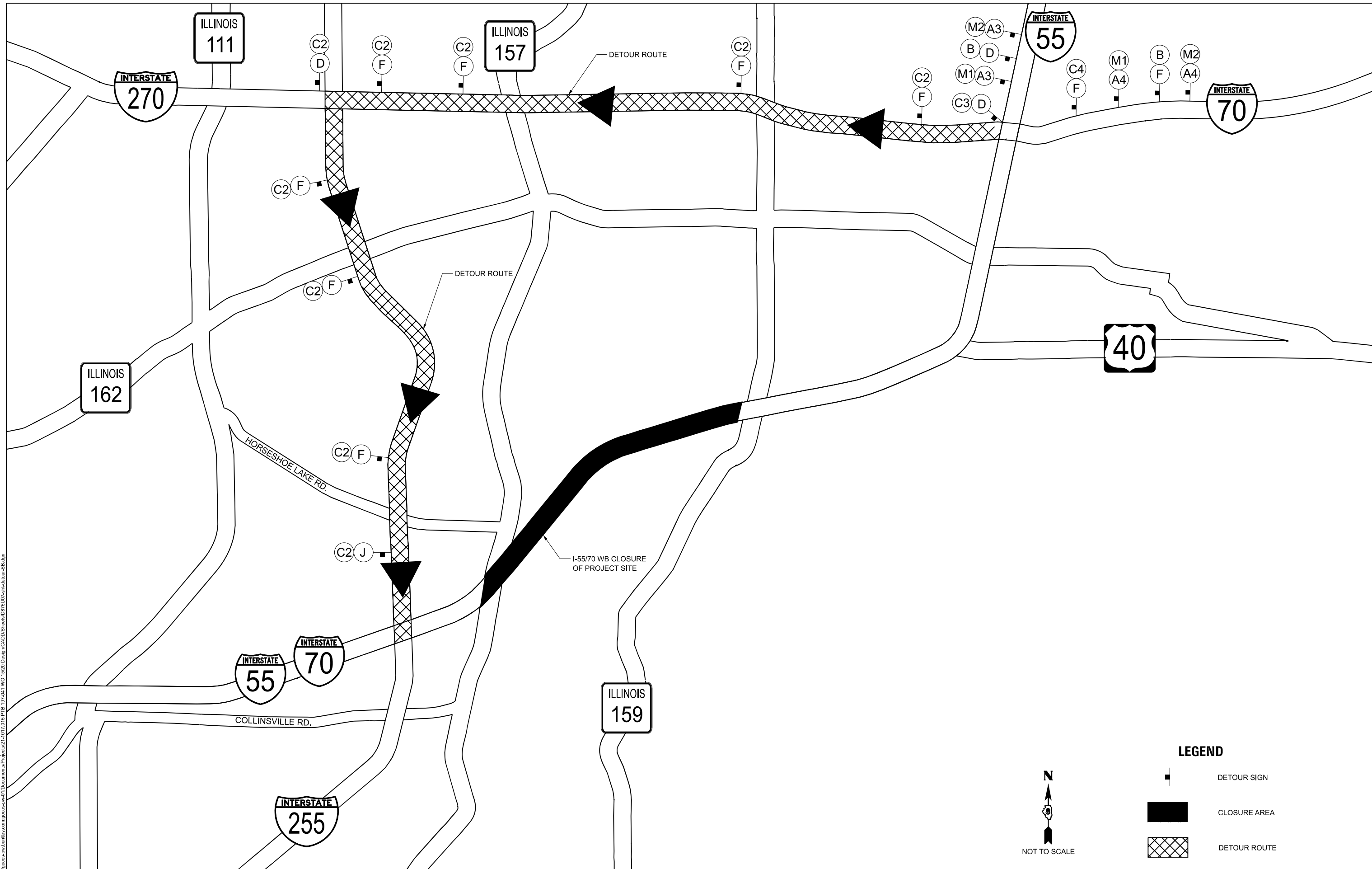
USER NAME = thermann	DESIGNED - TH	REVISED -
DRAWN - TH	REVISOR -	
PLOT SCALE = 4.99999000' / in.	CHECKED - PM	REVISED -
PLOT DATE = 10/1/2024	DATE - 10/01/2024	REVISED -

**STATE OF ILLINOIS  
DEPARTMENT OF TRANSPORTATION**




**EB DETOUR PLAN**

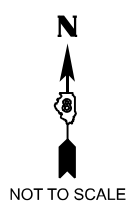
SCALE: SHEET 2 OF 3 SHEETS STA. TO STA.

F.A.I. RTE.	SECTION	COUNTY	TOTAL SHEETS	SHEET NO.
70	60-7BJR-BDR	MADISON	26	14
CONTRACT NO.			76U07	
ILLINOIS FED. AID PROJECT				



**LEGEND**

-  DETOUR SIGN
-  CLOSURE AREA
-  DETOUR ROUTE



DATE PLOTTED = 10/1/2024 11:48:37 AM  
 PEN TABLE = SPENTBLSS  
 PLOT CONFIG = SPLTDVRS  
 FILE NAME = p:\projects\new\bandwidth\com\project\21-017-015\PTB\_107-041\100\_1520\_Design\CADD\Sheets\BDR\76U07-wb-detour-SB.dgn



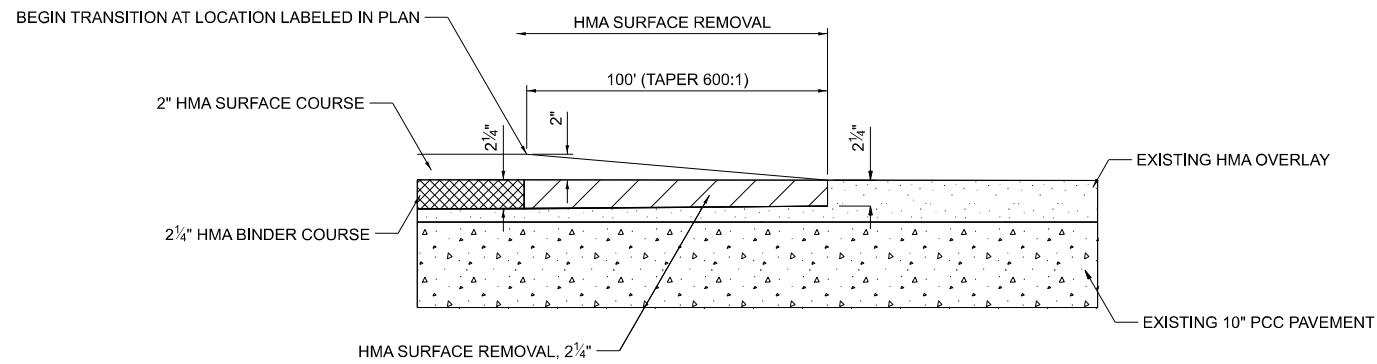
USER NAME = therrmann	DESIGNED - TH	REVISED -
	DRAWN - TH	REVISED -
PLOT SCALE = 4.99999000' / in.	CHECKED - PM	REVISED -
PLOT DATE = 10/1/2024	DATE - 10/01/2024	REVISED -

**STATE OF ILLINOIS  
DEPARTMENT OF TRANSPORTATION**

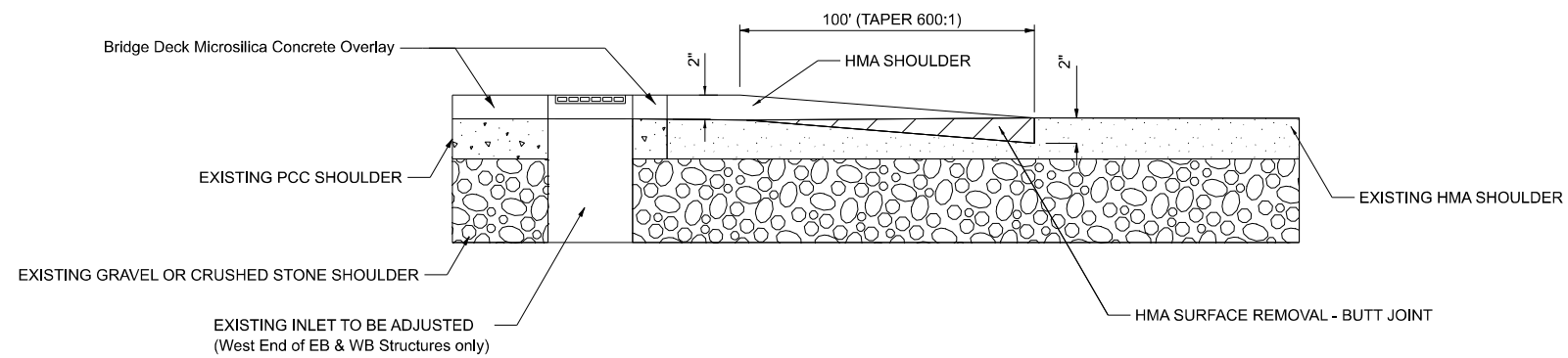
**WB DETOUR PLAN**

SCALE: SHEET 3 OF 3 SHEETS STA. TO STA.

F.A.I. RTE.	SECTION	COUNTY	TOTAL SHEETS	SHEET NO.
70	60-7BJR-BDR	MADISON	26	15
CONTRACT NO.			76U07	
ILLINOIS		FED. AID PROJECT		



**BUTT JOINT DETAIL  
MAINLINE WITH HOT-MIX ASPHALT SURFACE REMOVAL  
NOT TO SCALE**



**BUTT JOINT DETAIL  
SHOULDER  
NOT TO SCALE**

DATE PLOTTED = 10/1/2024 11:50:12 AM  
PEN TABLE = SPENTBLSS  
PLOT CONFIG = SPLCDRVSS  
PLOT SHEET =  
FILE NAME = p:\projects\new\berkeley\comp\p2023\p2023\p2023\1017\0115\PTB\_107-241\WC\_1520\_Design\CADD\Sheets\BDR76U07-hb-detail.dgn



USER NAME = therrmann	DESIGNED - TH	REVISED -
	DRAWN - TH	REVISED -
PLOT SCALE = 0.08333317' / in.	CHECKED - PM	REVISED -
PLOT DATE = 10/1/2024	DATE - 10/01/2024	REVISED -

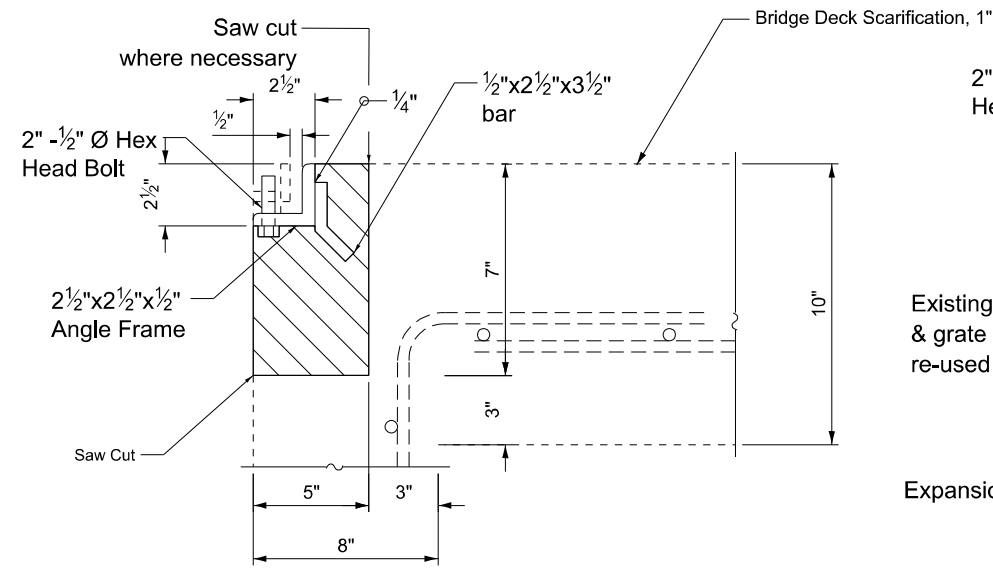
**STATE OF ILLINOIS  
DEPARTMENT OF TRANSPORTATION**

**DETAILS**

SCALE: SHEET 1 OF 2 SHEETS STA. TO STA.

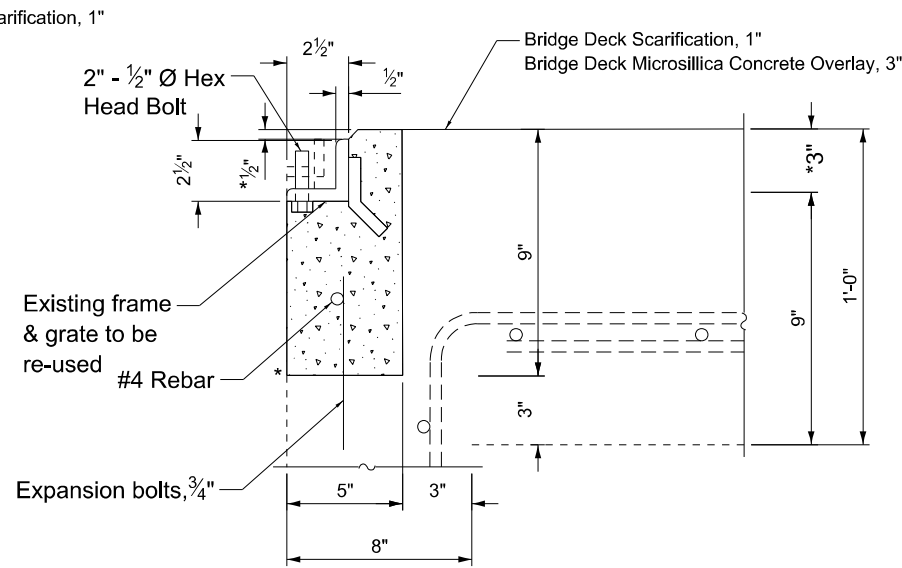
F.A.I. RTE.	SECTION	COUNTY	TOTAL SHEETS	SHEET NO.
70	60-7BJR-BDR	MADISON	26	16
CONTRACT NO.			76U07	
ILLINOIS		FED. AID PROJECT		





**DETAIL "A" - EXISTING**

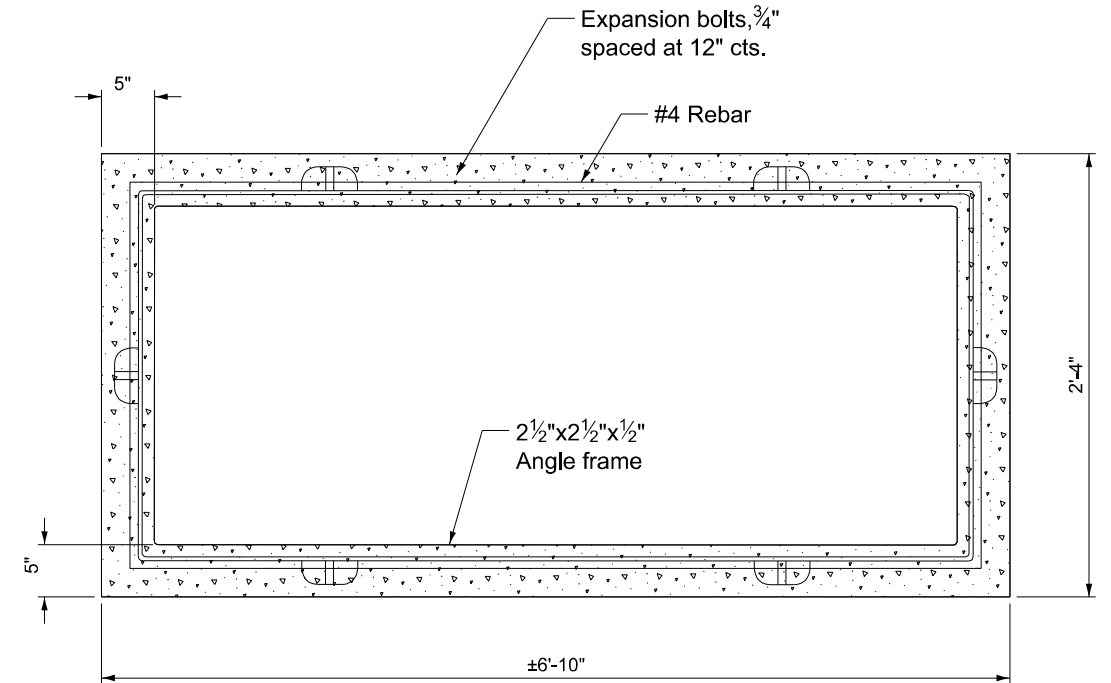
Concrete Removal



**DETAIL "A" - PROPOSED**

Class S.I. Concrete

\* Prior to Diamond Grinding



**PLAN - PROPOSED  
(GRATING OMITTED FOR CLARITY)**

Notes:  
Expansion bolts shall extend a minimum of 4" into the proposed concrete.  
All work and materials shall be in accordance with applicable portions of Section 602.  
This work will be paid for at the Contract unit price each for "Inlet Boxes to be Adjusted (Special)" which shall include all labor, equipment and material necessary to complete the work.

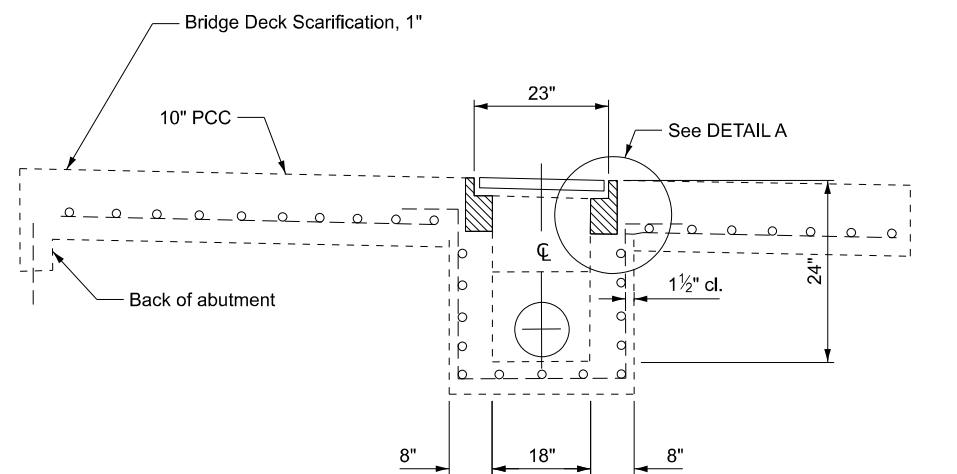
**ESTIMATED QUANTITIES  
(for information only)**

ITEM	UNIT	TOTAL
Concrete Removal	Cu Yd	0.13
Reinforcement Bars (Epoxy)	Pound	11.4
Class S.I. Concrete	Cu Yd	0.16
Expansion Bolts, 3/4"	Each	18

Note: Above quantities are for one (1) inlet box.

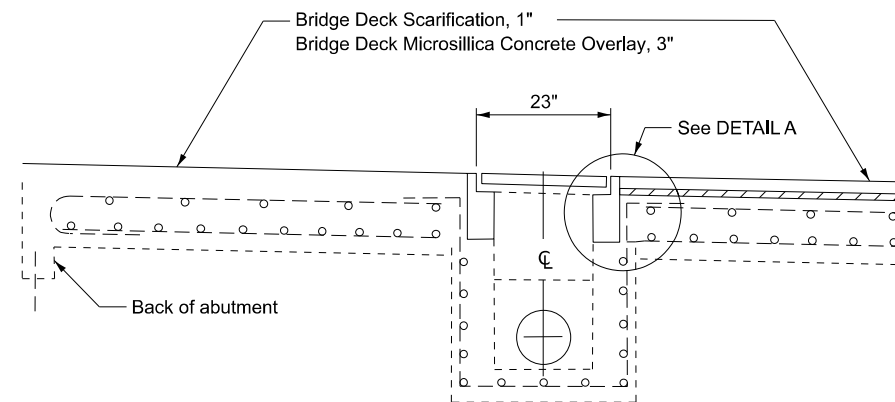
**BILL OF MATERIALS**

ITEM	UNIT	TOTAL
Inlet Boxes to be Adjusted (Special)	Each	4



**EXISTING TYPE D INLET BOX PROFILE  
BRIDGE APPROACH SHOULDER PAVEMENT AND DRAIN**

(Existing Approach Shoulder Pavement Std. 2324-6)



**PROPOSED PROFILE  
BRIDGE APPROACH SHOULDER PAVEMENT AND DRAIN**

DATE PLOTTED = 10/1/2024 11:50:12 AM  
PEN TABLE = SPENTBLSS  
PLOT CONFIG = SPLCDRVSS  
FILE NAME = p:\projects\24\bridge\240324\240324.dwg

**gonzalez**  
GONZALEZ COMPANIES, LLC  
PRO. ENGINEER 184004564-0014

USER NAME = thermann	DESIGNED - TH	REVISED -
PLOT SCALE = 0.08333317 / in.	DRAWN - TH	REVISED -
PLOT DATE = 10/1/2024	CHECKED - PM	REVISED -
	DATE - 10/01/2024	REVISED -

**STATE OF ILLINOIS  
DEPARTMENT OF TRANSPORTATION**

**INLET ADJUSTMENT DETAILS**

SCALE: SHEET 2 OF 2 SHEETS STA. TO STA.

F.A.I. RTE.	SECTION	COUNTY	TOTAL SHEETS	SHEET NO.
70	60-7BJR-BDR	MADISON	26	17
CONTRACT NO.			76U07	
ILLINOIS		FED. AID PROJECT		

Existing Structure: S.N. 060-0014 & 060-0015 was built in 1958 as F.A.I. Route 7, Section 60-7HB-2. Each structure consists of a 3-span reinforced concrete deck with WF steel beams in the end spans and a plate girder in the center span with end span hinges. The substructure consists of reinforced concrete stub abutments supported on concrete piles and reinforced concrete multi-column piers supported on timber piles. The deck was replaced and the structure was widened and repaired in 1986. The hinges were replaced in 1999 and steel repairs and expansion joint and bearing replacement were done in 2009. Each structure is 258'-3" back-to-back abutments and 42'-2" out-to-out of deck.

Traffic Control: Each bridge to be rehabilitated under full road closure.

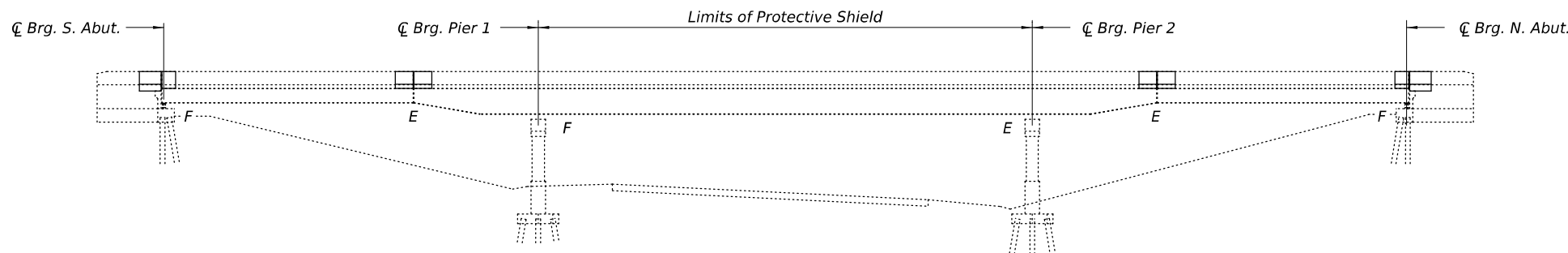
Salvage: None

**INDEX OF SHEETS**

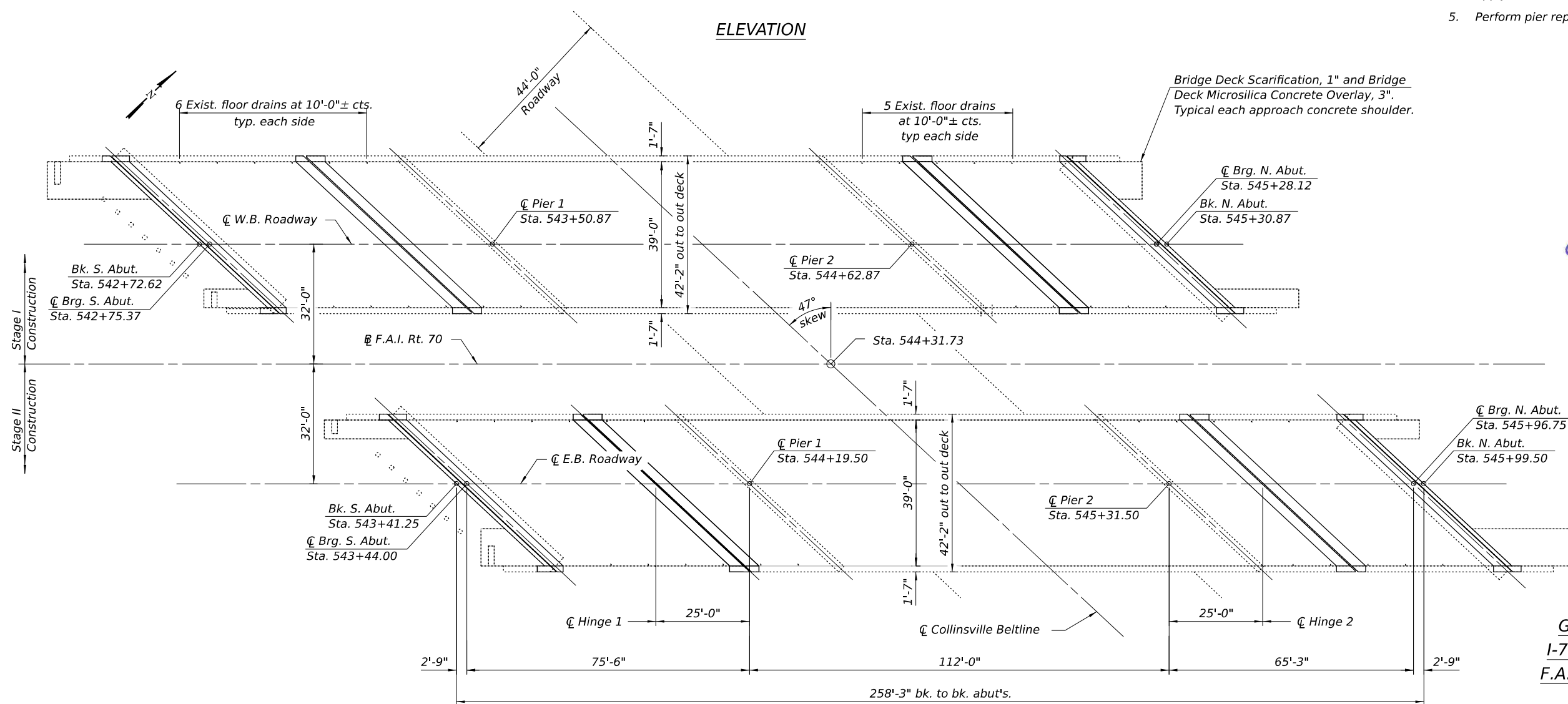
1. General Plan and Elevation
2. General Data
- 3.-4. Deck Repair Plan
- 5.-6. Joint Reconstruction Details
7. Preformed Joint Strip Seal
8. Pier Repairs (EB)
9. Pier Repairs (WB)

**SCOPE OF WORK**

1. Remove and replace expansion joints at locations shown.
2. Scarify bridge deck 1" and install 3" Microsilica Concrete Overlay. Perform deck slab repairs as required.
3. Perform diamond grinding and deck grooving.
4. Apply Protective Coat.
5. Perform pier repairs as shown.

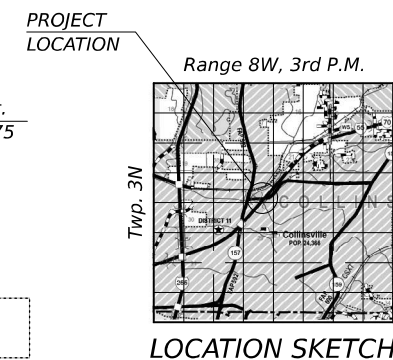
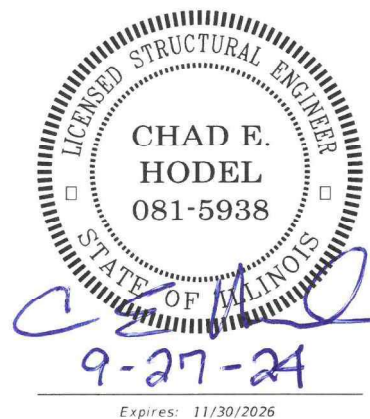


**ELEVATION**



**PLAN**

Bridge Deck Scarification, 1" and Bridge Deck Microsilica Concrete Overlay, 3". Typical each approach concrete shoulder.



**GENERAL PLAN AND ELEVATION  
I-70 OVER COLLINSVILLE BELTLINE  
F.A.I. RT. 70 - SECTION 60-7BJR-BDR  
MADISON COUNTY  
STA. 544+31.73  
STRUCTURE NO. 060-0014 (E.B.)  
STRUCTURE NO. 060-0015 (W.B.)**

FILE NAME: C:\SP\WHKS & CO\Jobs-Spring - Projects\DOT D-B\9167 PTB 197-0419167.15 1-55 over Beltline Rd\CADD\10-12\CADD Data\Bkg060\_0014\_0013.dgn



USER NAME =	DESIGNED - CEH	REVISED -
CHECKED - JLM	REVISIONS -	
PLOT DATE = 9/27/2024	DRAWN - DLH	REVISED -
PLOT DATE = 9:17:23 AM	CHECKED - CEH / JLM	REVISED -

**ILLINOIS DEPARTMENT OF TRANSPORTATION**

**STRUCTURE NO. 060-0014 (EB) & 060-0015 (WB)**

SHEET 1 OF 9 SHEETS

F.A.I. RTE.	SECTION	COUNTY	TOTAL SHEETS	SHEET NO.
70	60-7BJR-BDR	MADISON	26	18
CONTRACT NO.				
ILLINOIS FED. AID PROJECT				

**GENERAL NOTES**

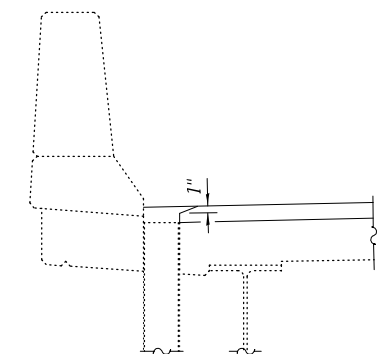
- Plan dimensions and details relative to the existing structure have been taken from existing plans and are subject to nominal construction variations. The Contractor shall field verify existing dimensions and details affecting new construction and make necessary approved adjustments prior to construction or ordering of materials. Such variations shall not be cause for additional compensation for a change in scope of the work, however, the Contractor will be paid for the quantity actually furnished at the unit price bid for the work.
- The existing structural steel coating contains lead. The Contractor shall take appropriate precautions to deal with the presence of lead on this project.
- Prior to pouring the new concrete deck, all heavy or loose rust, loose mill scale, and other loose detrimental foreign material shall be removed from the surfaces in contact with concrete (SSPC - SP3 standards). Tightly adhered paint may remain unless otherwise noted. Removal shall be accomplished by methods that will not damage the steel and the cost will be paid for according to Article 109.04 of the Standard Specifications.

As directed by the Engineer, existing construction accessories welded to the top flange of beams and girders shall be removed. The weld areas shall be ground flush and inspected for cracks using magnetic particle testing (MT) or dye penetrant testing (PT) by qualified personnel approved by the Engineer. Any cracks that cannot be removed by grinding 1/4 in. deep shall be identified and reported to the Bureau of Bridges and Structures for further disposition. The cost of removing welded accessories, grinding and inspecting weld areas and grinding cracks will be paid for according to Article 109.04 of the Standard Specifications.

- No field welding is permitted except as specified in the contract documents.
- Reinforcement bars designated (E) shall be epoxy coated.
- Up to 1/4" to be ground off the bridge deck and adjacent bridge approaches. The diamond grinding and surface testing for the bridge section shall extend from back of abutment to back of abutment (provide 1:240 taper on approach slabs).
- Existing reinforcement extending into the removal area shall be cleaned, straightened, and incorporated into the new construction. Any existing reinforcement bars intended for reuse and damaged during the concrete removal operations shall be repaired or replaced using an approved bar splicer or anchor system to the satisfaction of the Engineer. Cost included with Concrete Removal.
- The Contractor shall take appropriate measures to ensure that Protective Coat is not applied to the floor drains and drainage inlets.
- Dirt and debris shall be cleaned from the drainage inlets and floor drains. Cost included with Bridge Deck Scarification.

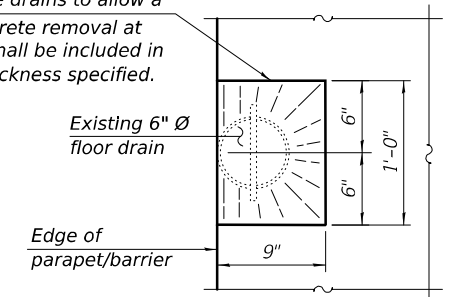
**TOTAL BILL OF MATERIAL**

Item	Unit	Super	Sub	Total
Concrete Removal	Cu. Yd.	89.4	-	89.4
Protective Shield	Sq. Yd.	1,054	-	1,054
Concrete Superstructure	Cu. Yd.	101.2	-	101.2
Protective Coat	Sq. Yd.	2,768	-	2,768
Reinforcement Bars, Epoxy Coated	Pound	8,230	-	8,230
Preformed Joint Strip Seal	Foot	474	-	474
Bridge Deck Scarification 1"	Sq. Yd.	2,132	-	2,132
Bridge Deck Microsilica Concrete Overlay 3"	Sq. Yd.	2,132	-	2,132
Structural Repair of Concrete (Depth Equal to or Less Than 5 Inches)	Sq. Ft.	-	97.3	97.3
Deck Slab Repair (Full Depth, Type I)	Sq. Yd.	2.6	-	2.6
Deck Slab Repair (Full Depth, Type II)	Sq. Yd.	80.2	-	80.2
Diamond Grinding (Bridge Section)	Sq. Yd.	2,088	-	2,088
Bridge Deck Grooving (Longitudinal)	Sq. Yd.	1,359	-	1,359



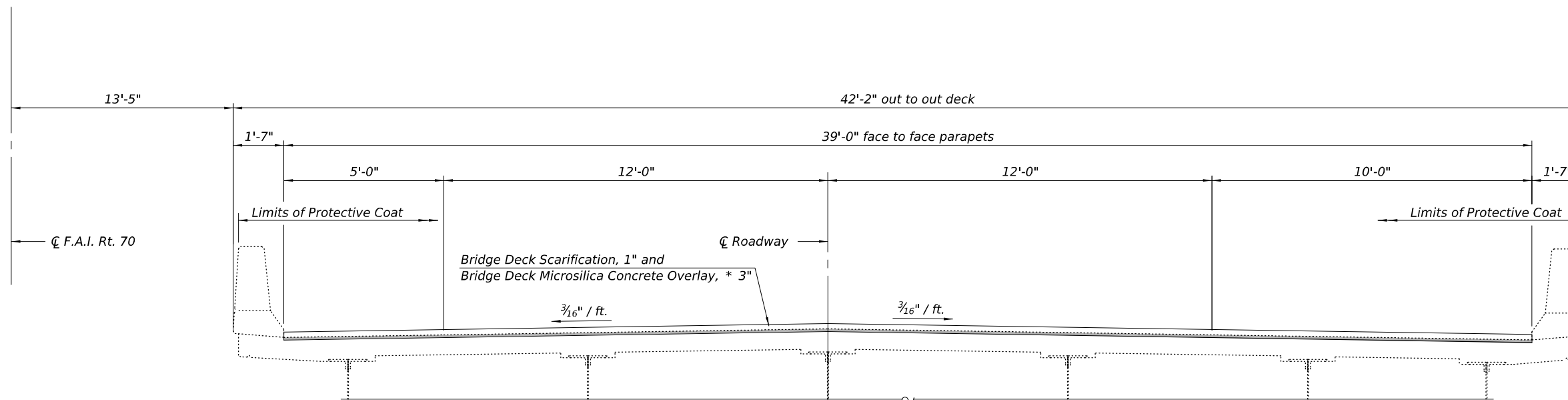
**SECTION AT DRAINS**

Localized concrete removal may be required at the drains to allow a minimum overlay thickness of 2 1/4". Localized concrete removal at the drains will not be measured for payment but shall be included in the unit cost of Bridge Deck Scarification of the thickness specified.



**OVERLAY TREATMENT AT DRAINS**

(44 drains total)



\* Prior to grinding.

**CROSS SECTION**

(E.B. Looking North, W.B. Looking South)

FILE NAME: C:\SP\OneDrive - WHKS & CO\Desktop\060\_0014\_0015.dgn

design firm  
no. 184001036



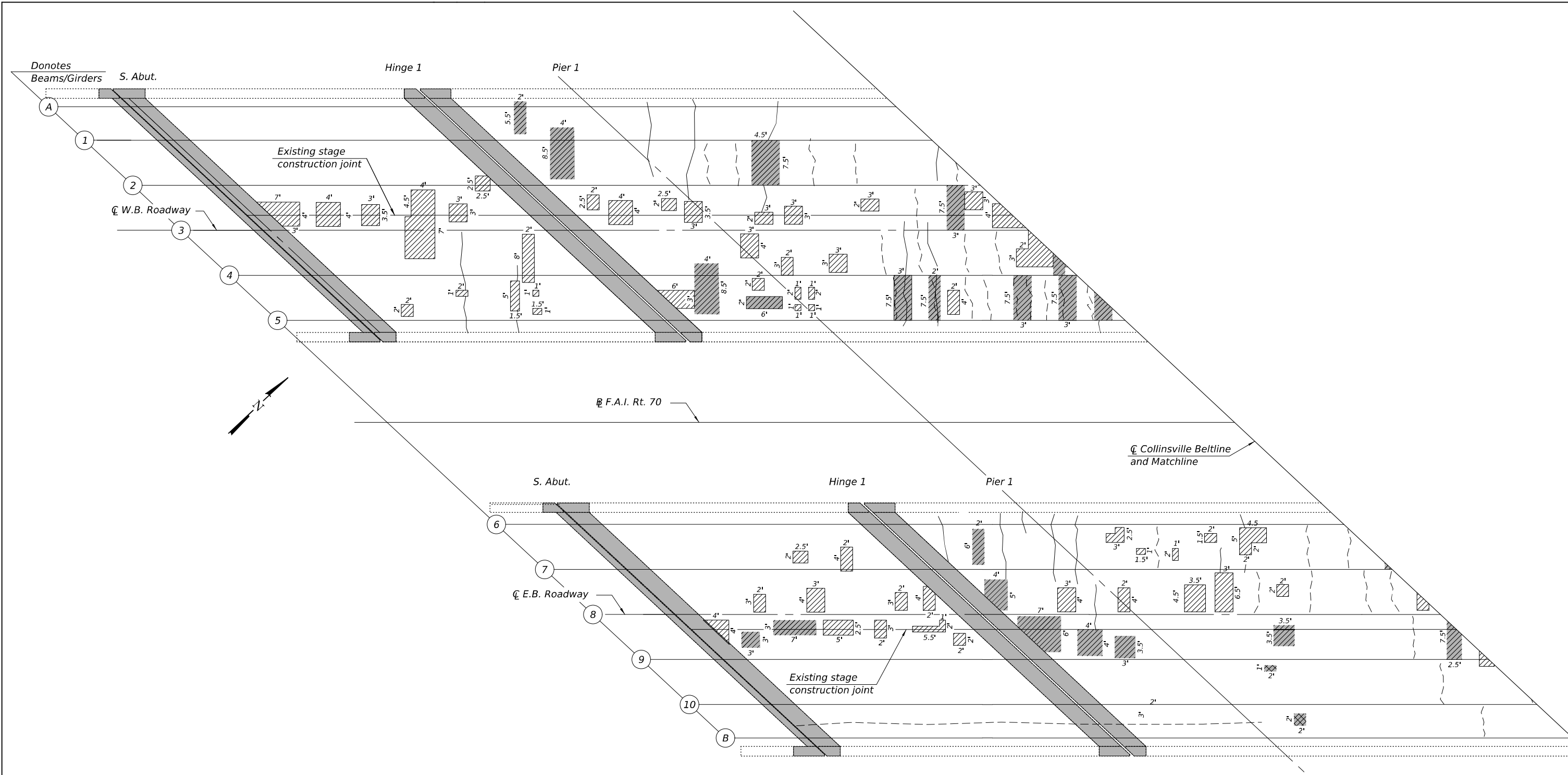
USER NAME = S\USERS	DESIGNED - CEH	REVISED -
	CHECKED - JLM	REVISED -
PLOT DATE = 9/27/2024	DRAWN - DLH	REVISED -
PLOT TIME = 8:05:28 AM	CHECKED - CEH / JLM	REVISED -

**ILLINOIS DEPARTMENT OF TRANSPORTATION**

**GENERAL DATA**  
**STRUCTURE NO. 060-0014 (EB) & 060-0015 (WB)**

SHEET 2 OF 9 SHEETS

FAI RTE.	SECTION	COUNTY	TOTAL SHEETS	SHEET NO.
70	60-7BJR-BDR	MADISON	26	19
CONTRACT NO.				
ILLINOIS FED. AID PROJECT				



**LEGEND**

- Observed Top of Deck Crack
- Observed Bottom of Deck Crack
- Expansion Joint Removal
- Deck Slab Repair (Partial)
- Deck Slab Repair (Full Depth, Type I)
- Deck Slab Repair (Full Depth, Type II)

**Notes:**

1. Deck Slab Repair (Partial) locations and quantities shown are for information only and will not be measured for payment but shall be included in the cost of Bridge Deck Microsilica Concrete Overlay 3". See special provision for Bridge Deck Microsilica Concrete Overlay 3".
2. Quantities and limits of Deck Slab Repairs shown are estimated from an April 2024 inspection. Actual limits shall be determined in the field and noted in the As-Built Plans. See special provision for Deck Slab Repair.
3. For expansion joint reconstruction details, see sheets 5 and 6.

**PARTIAL DECK REPAIR PLAN**

(Sheet 1 of 2)

FILE NAME: C:\SP\OneDrive - WHKS & CO\Desktop\060\_0014\_0015.dgn



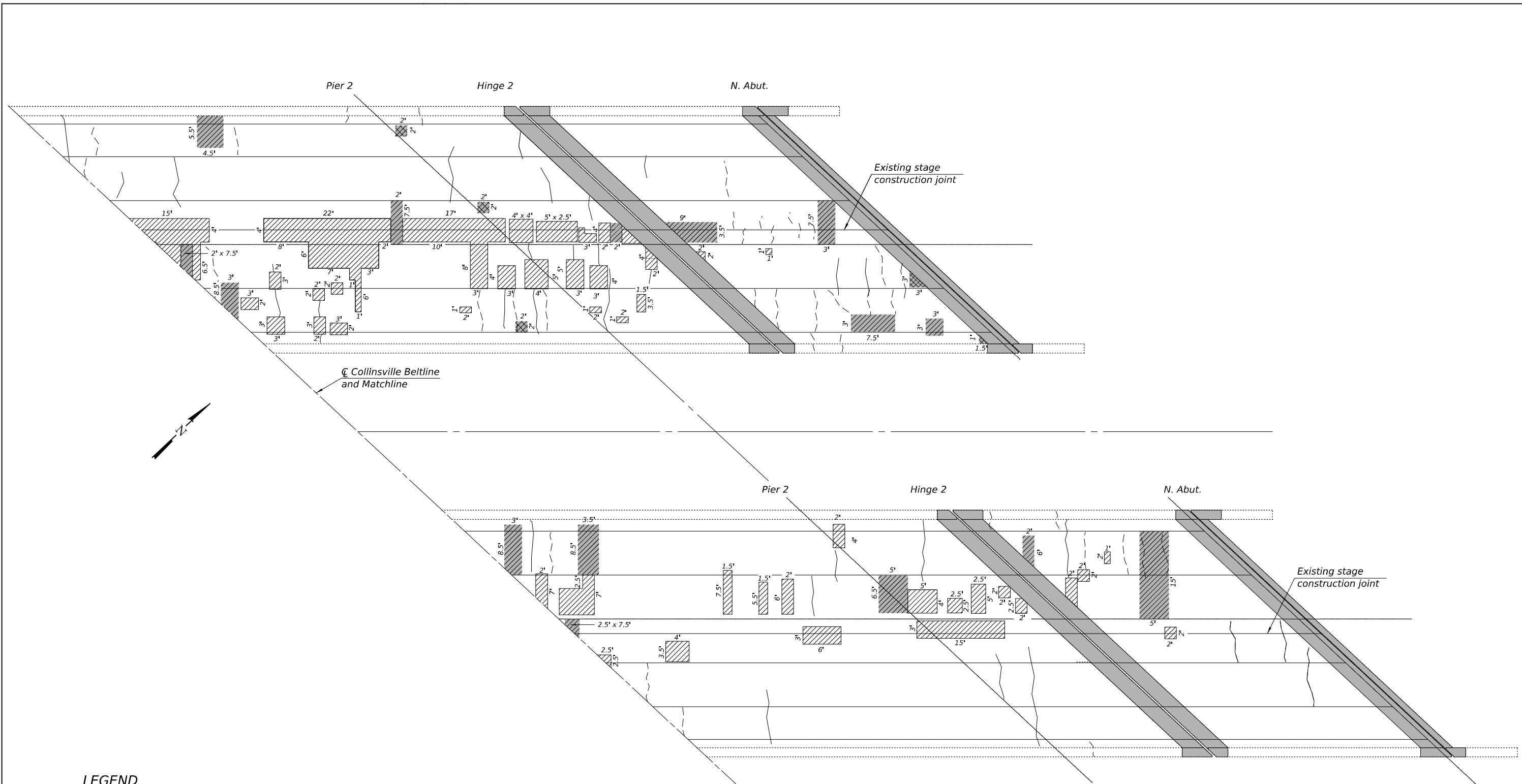
USER NAME = S\USERS	DESIGNED - SBC	REVISED -
	CHECKED - JLM	REVISED -
PLOT DATE = 9/27/2024	DRAWN - DLH	REVISED -
PLOT TIME = 8:05:28 AM	CHECKED - SBC / JLM	REVISED -

**ILLINOIS DEPARTMENT OF TRANSPORTATION**

**DECK REPAIR PLAN  
STRUCTURE NO. 060-0014 (EB) & 060-0015 (WB)**

SHEET 3 OF 9 SHEETS

FAI RTE.	SECTION	COUNTY	TOTAL SHEETS	SHEET NO.
70	60-7BJR-BDR	MADISON	26	20
CONTRACT NO.				
ILLINOIS FED. AID PROJECT				



**LEGEND**

- Observed Top of Deck Crack
- Observed Bottom of Deck Crack
- Expansion Joint Removal
- Deck Slab Repair (Partial)
- Deck Slab Repair (Full Depth, Type I)
- Deck Slab Repair (Full Depth, Type II)

**PARTIAL DECK REPAIR PLAN**

**BILL OF MATERIAL**

Item	Unit	Total
Deck Slab Repair (Full Depth, Type I)	Sq. Yd.	2.6
Deck Slab Repair (Full Depth, Type II)	Sq. Yd.	80.2

(Sheet 2 of 2)

FILE NAME: C:\SP\OneDrive - WHKS & CO\Desktop\060\_0014\_0015.dgn

design firm  
no. 184001036



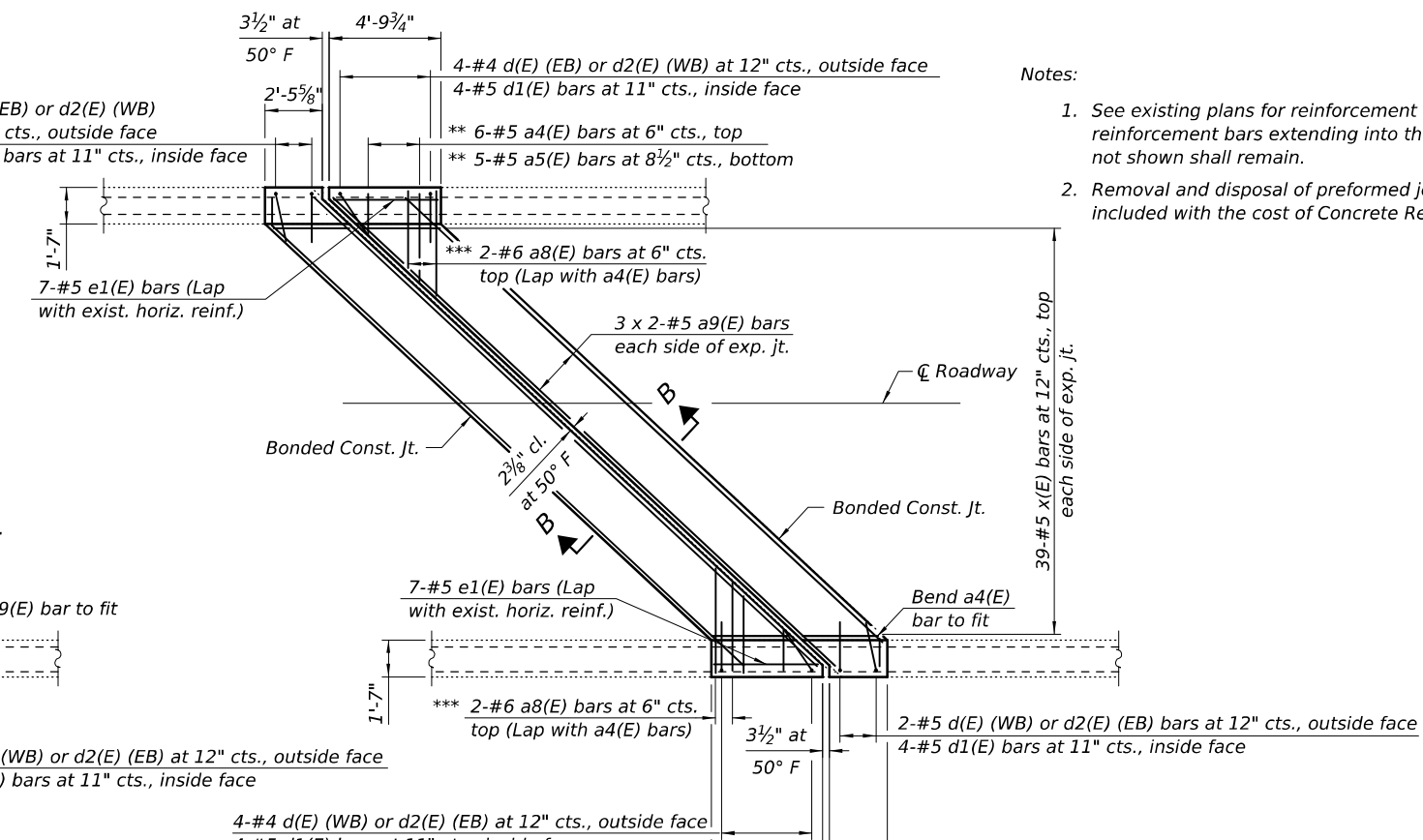
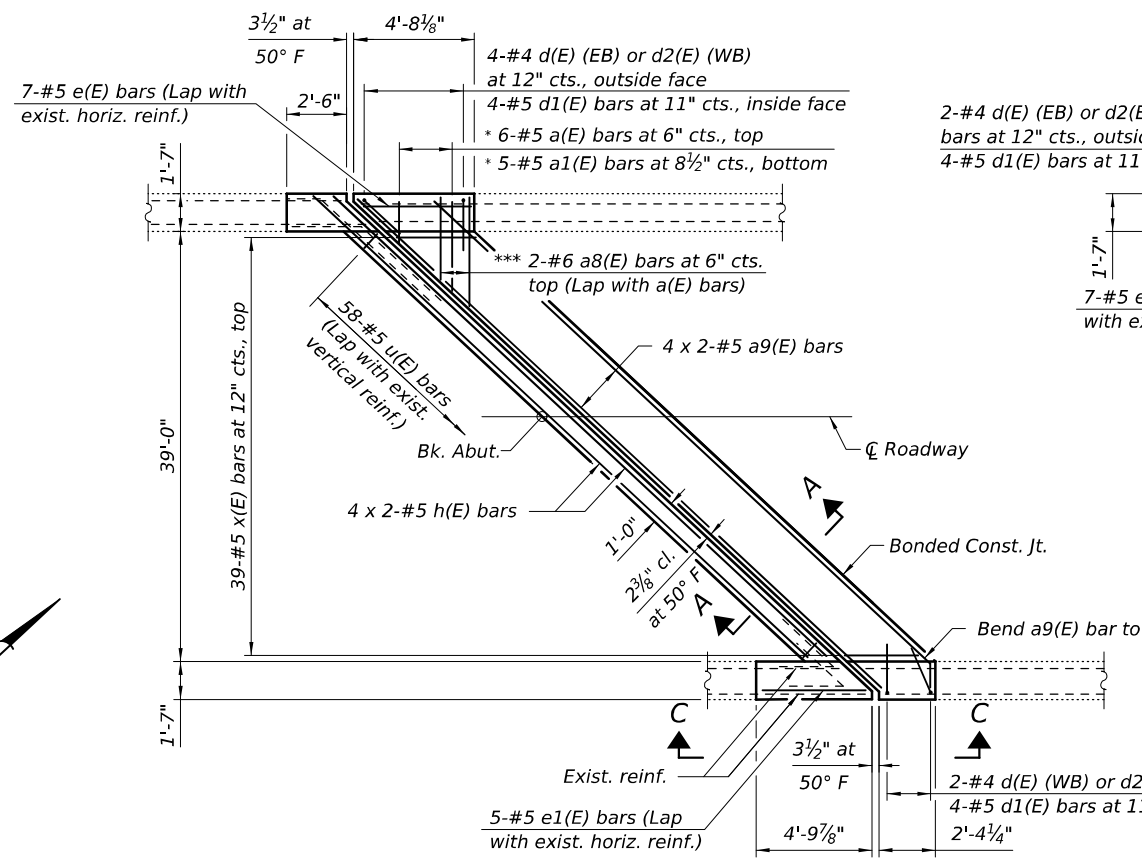
USER NAME = \$USERS	DESIGNED - SBC	REVISED -
	CHECKED - JLM	REVISED -
PLOT DATE = 9/27/2024	DRAWN - DLH	REVISED -
PLOT TIME = 8:05:28 AM	CHECKED - SBC / JLM	REVISED -

**ILLINOIS DEPARTMENT OF TRANSPORTATION**

**DECK REPAIR PLAN  
STRUCTURE NO. 060-0014 (EB) & 060-0015 (WB)**

SHEET 4 OF 9 SHEETS

FAI RTE.	SECTION	COUNTY	TOTAL SHEETS	SHEET NO.
70	60-7BJR-BDR	MADISON	26	21
CONTRACT NO.				
ILLINOIS FED. AID PROJECT				



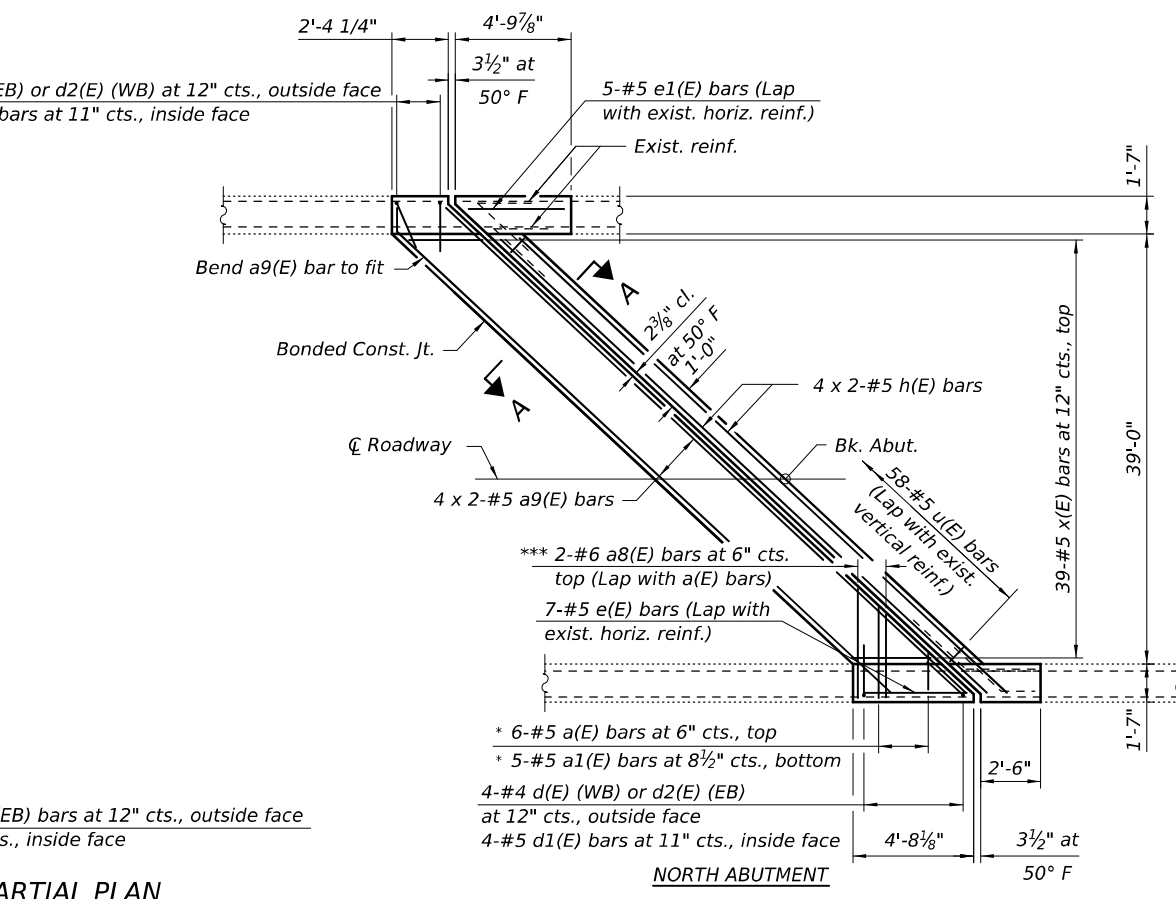
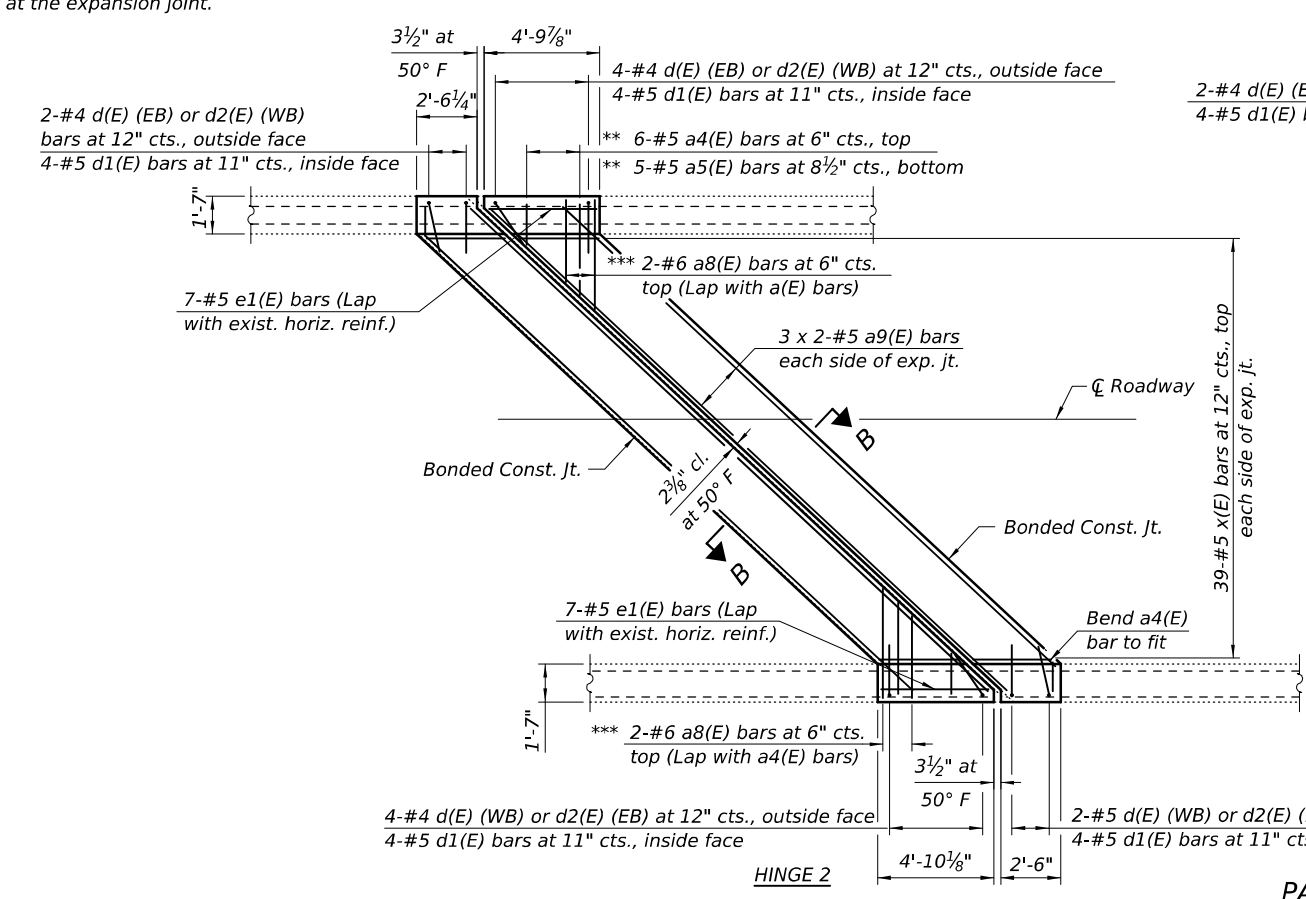
- Notes:
1. See existing plans for reinforcement bars not shown. Existing reinforcement bars extending into the removal areas that are not shown shall remain.
  2. Removal and disposal of preformed joint strip seal shall be included with the cost of Concrete Removal.

\* Order bars full length. Field cut to fit skew and use remainder of bars at opposite abutment.  
 \*\* Order bars full length. Field cut to fit skew and use remainder of bars on other side of exp. jt.  
 \*\*\* Field cut a8(E) bars to fit at the expansion joint.

**SOUTH ABUTMENT**

**PARTIAL PLAN**  
(Showing joint reconstruction.)

**HINGE 1**



**PARTIAL PLAN**  
(Showing joint reconstruction.)

**NORTH ABUTMENT**

(Sheet 1 of 2)

FILE NAME: C:\SP\OneDrive - WHKS & CO\Desktop\060\_0014\_0015.dgn



USER NAME = SUSER\$	DESIGNED - CEH	REVISED -
PLOT DATE = 9/27/2024	CHECKED - JLM	REVISED -
PLOT TIME = 8:05:28 AM	DRAWN - DLH	REVISED -
	CHECKED - CEH / JLM	REVISED -

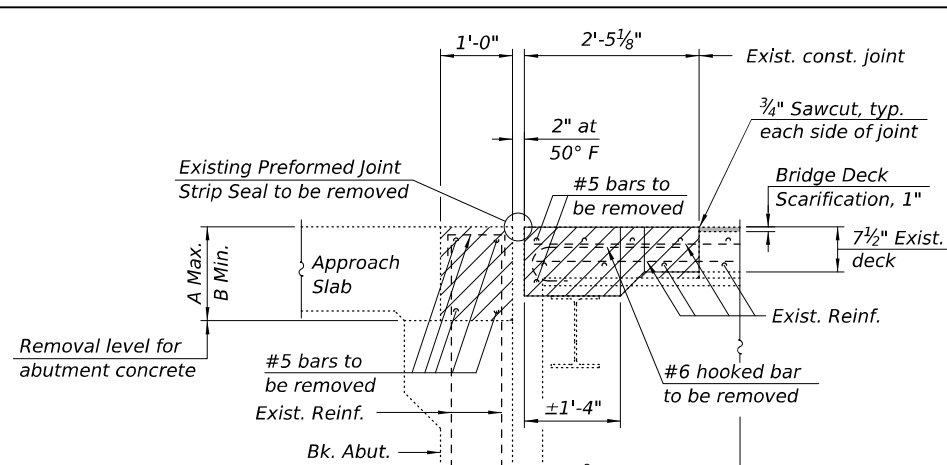
**ILLINOIS DEPARTMENT OF TRANSPORTATION**

**JOINT RECONSTRUCTION DETAILS**  
**STRUCTURE NO. 060-0014 (EB) & 060-0015 (WB)**

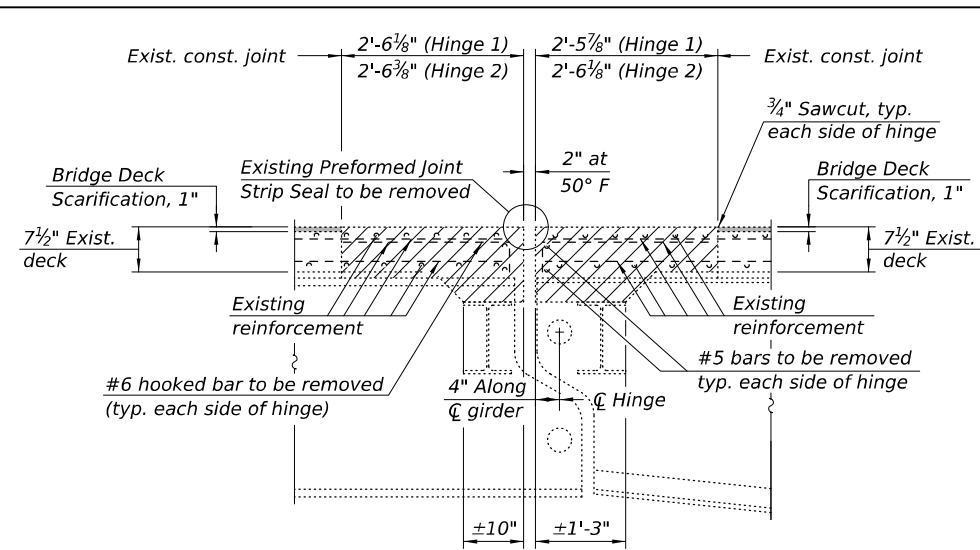
SHEET 5 OF 9 SHEETS

FAI RTE.	SECTION	COUNTY	TOTAL SHEETS	SHEET NO.
70	60-7BJR-BDR	MADISON	26	22
CONTRACT NO.				
ILLINOIS FED. AID PROJECT				

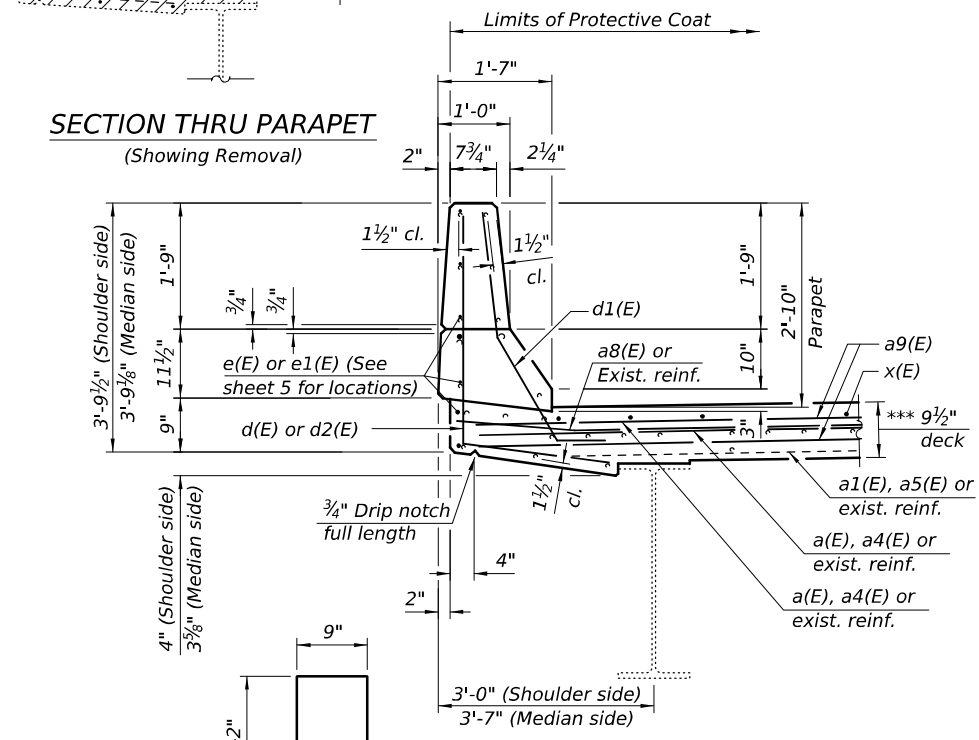
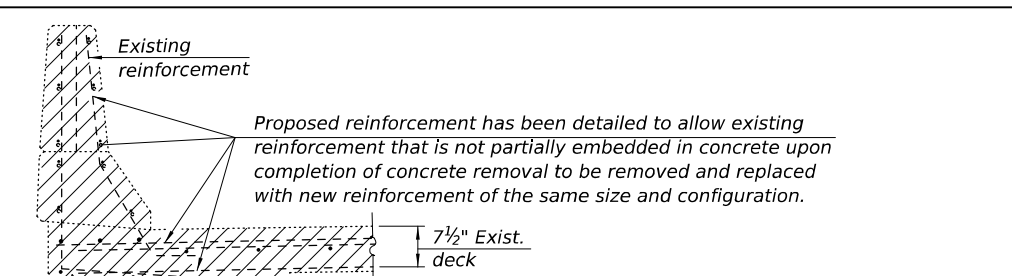




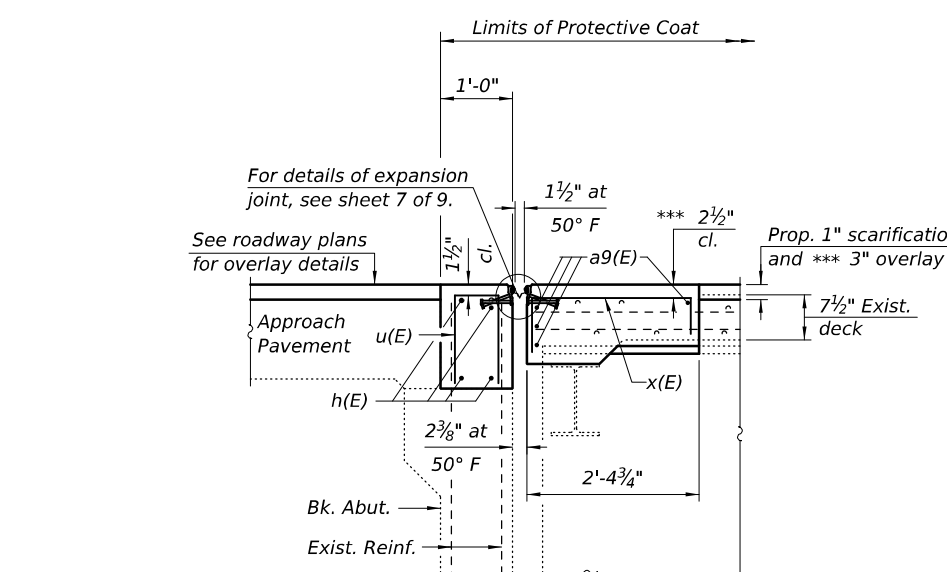
**SECTION A-A**  
(Showing Removal)  
(Dim's at Rt. Δ's to back of abut.)



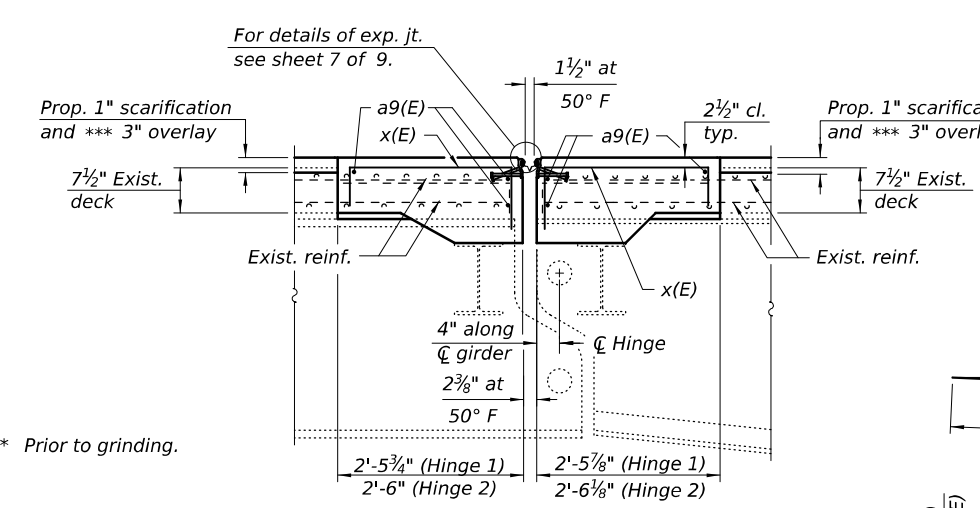
**SECTION B-B**  
(Showing Removal)  
(Dim's at Rt. Δ's to exp. joint unless noted otherwise)



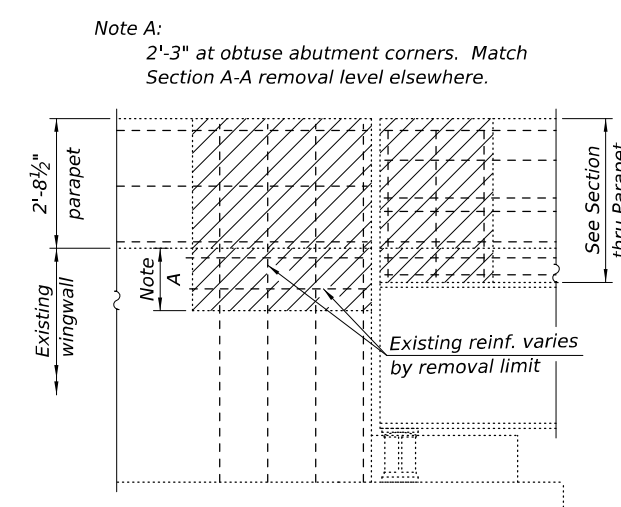
**SECTION THRU PARAPET**  
(Showing Removal)



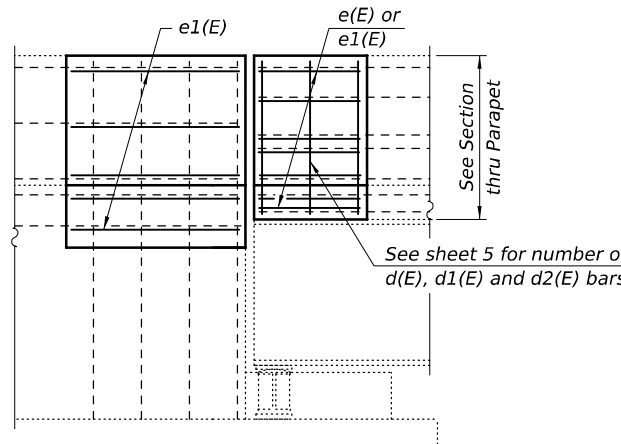
**SECTION A-A**  
(Showing Reconstruction)  
(Dim's at Rt. Δ's to back of abut.)



**SECTION B-B**  
(Showing Reconstruction)  
(Dim's at Rt. Δ's to exp. joint unless noted otherwise)



**VIEW C-C**  
(Showing removal. Typ. each abutment corner)



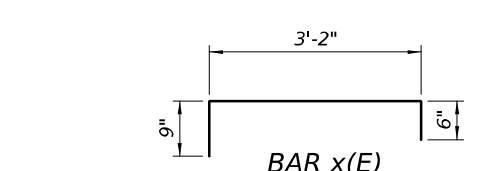
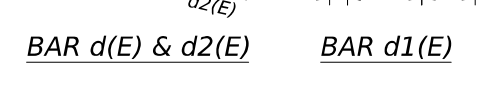
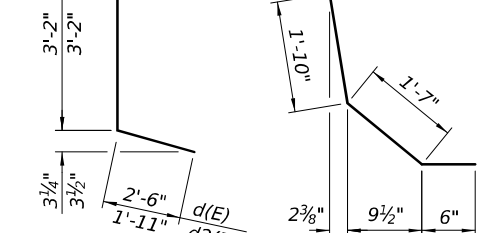
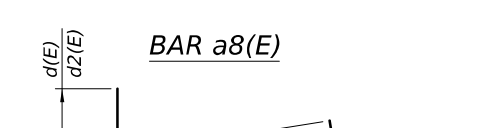
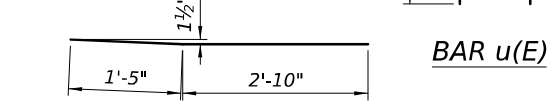
**VIEW C-C**  
(Showing reconstruction. Typ. each abutment corner)

**TABLE OF DIMENSIONS**

	E.B.		W.B.	
	S. Abut.	N. Abut.	S. Abut.	N. Abut.
A	1'-9 1/4"	1'-10 3/8"	1'-8 1/8"	1'-10 1/4"
B	1'-5 1/2"	1'-6 1/4"	1'-3 3/4"	1'-5 1/4"

**LEGEND**

- Concrete Removal
- Proposed Scarification



Note: x(E) bar bends shall utilize the radius permitted for stirrups.

**SECTION THRU PARAPET**  
(Section thru abutment parapet similar.)  
**SUPERSTRUCTURE BILL OF MATERIAL**  
**TWO STRUCTURES**

Bar	No.	Size	Length	Shape
a(E)	12	#5	6'-0"	—
a1(E)	10	#5	4'-6"	—
a4(E)	24	#5	6'-4"	—
a5(E)	20	#5	4'-10"	—
a8(E)	24	#6	4'-3"	—
a9(E)	80	#5	32'-0"	—
d(E)	36	#4	4'-8"	┌
d1(E)	96	#5	3'-11"	┌
d2(E)	36	#4	5'-1"	┌
e(E)	28	#5	4'-4"	—
e1(E)	96	#5	4'-6"	—
h(E)	32	#5	30'-3"	—
u(E)	232	#5	3'-1"	┌
x(E)	468	#5	4'-5"	┌
Concrete Removal			Cu. Yd.	89.4
Reinforcement Bars, Epoxy Coated			Pound	8,230
Concrete Superstructure			Cu. Yd.	101.2

\* Minimum bar lap is 3'-6".  
Bars indicated thus 4 x 2-#5 etc. indicates 4 lines of bars with 2 lengths per line.

FILE NAME: C:\SP\OneDrive - WHKS & CO\Desktop\060\_0014\_0015.dgn



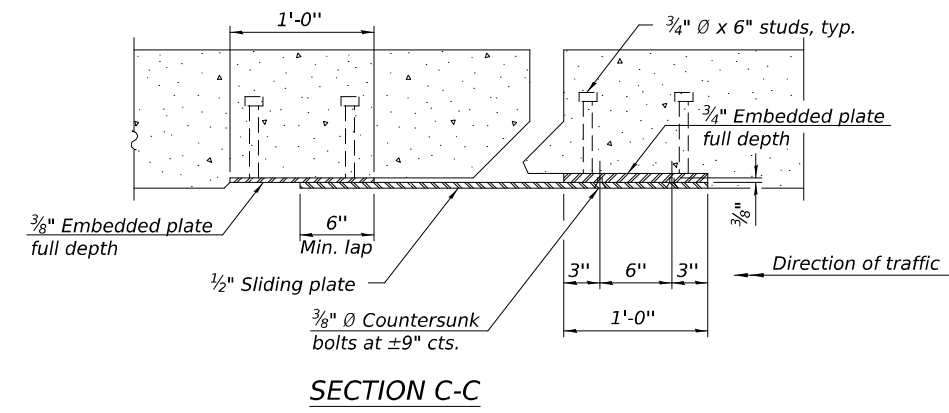
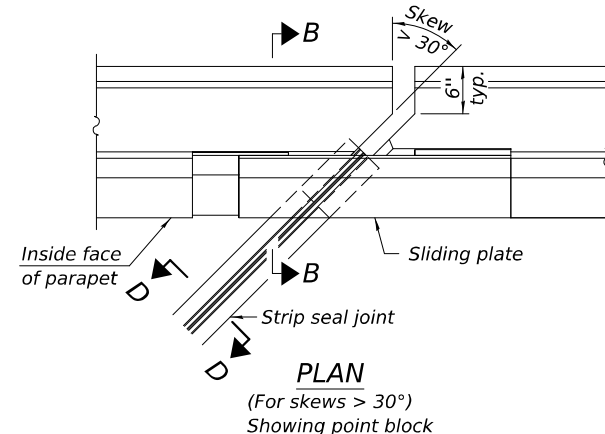
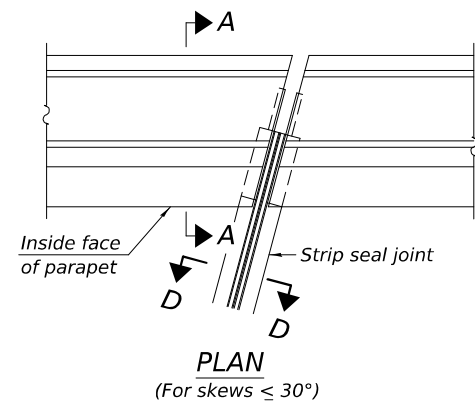
USER NAME = SUSER\$	DESIGNED - CEH	REVISED -
PLOT DATE = 9/27/2024	CHECKED - JLM	REVISED -
PLOT TIME = 8:05:28 AM	DRAWN - DLH	REVISED -
	CHECKED - CEH / JLM	REVISED -

**ILLINOIS DEPARTMENT OF TRANSPORTATION**

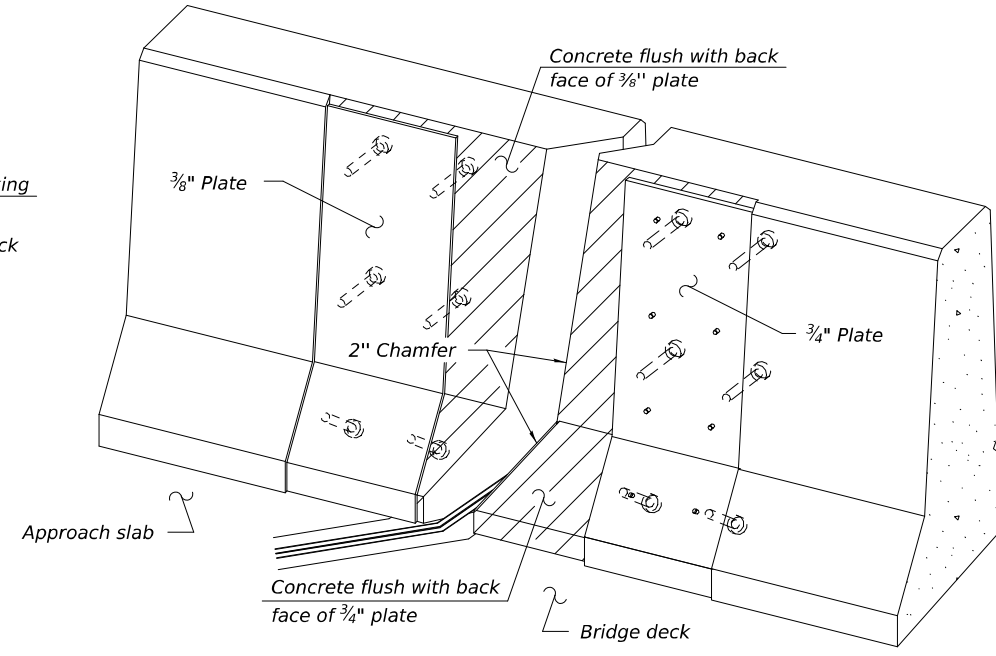
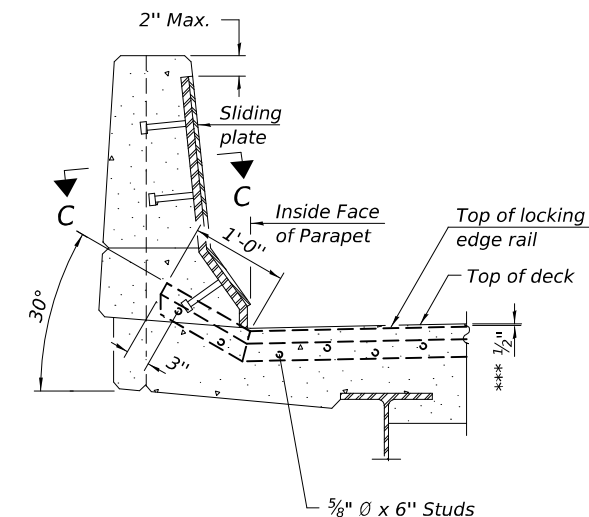
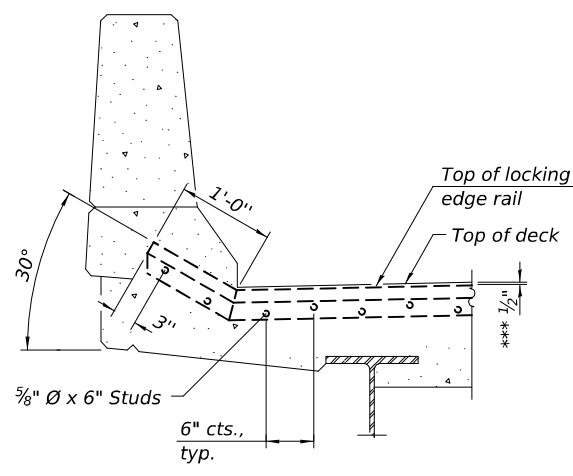
**JOINT RECONSTRUCTION DETAILS**  
**STRUCTURE NO. 060-0014 (EB) & 060-0015 (WB)**

SHEET 6 OF 9 SHEETS

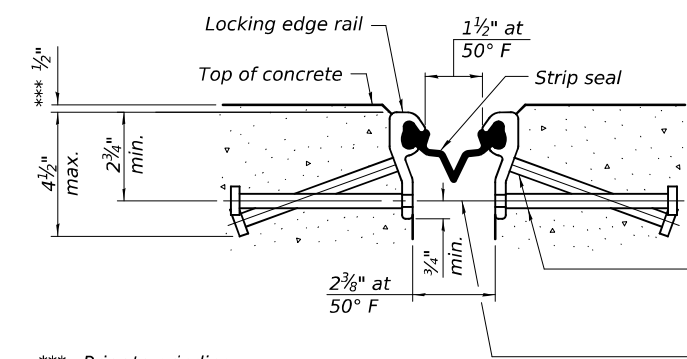
FAI RTE.	SECTION	COUNTY	TOTAL SHEETS	SHEET NO.
70	60-TBJR-BDR	MADISON	26	23
CONTRACT NO.				
ILLINOIS FED. AID PROJECT				



**Notes:**  
The strip seal shall be made continuous and shall have a minimum thickness of  $\frac{1}{4}$ ". The configuration of the strip seal shall match the configuration of the locking edge rails. Open or "webbed" strip seal gland configurations are not permitted. The gland shall be sized for a maximum rated movement of 4 inches.  
The locking edge rails depicted are configured for typical applications and are conceptual only. The actual configuration of the locking edge rails and matching strip seal may vary from manufacturer to manufacturer provided they fit the application and meet the minimum anchorage shown. Flanged edge rails, however, will not be allowed. Locking edge rails may exceed the  $4\frac{1}{2}$ " maximum depth provided the anchorage system is revised according to the manufacturer's recommendation.  
The manufacturer's recommended installation methods shall be followed.

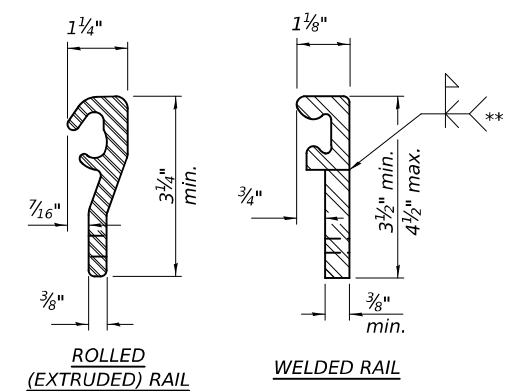
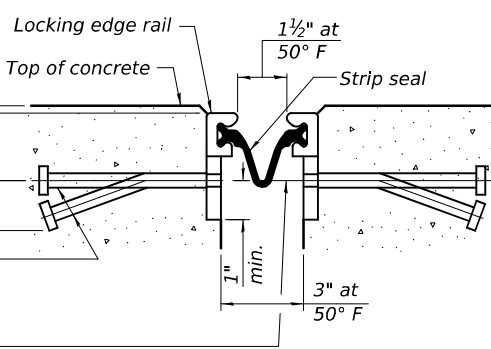


All steel components shall be galvanized after fabrication according to Article 520.03 of the Standard Specifications.  
The Maximum space between locking edge rail segments shall be  $\frac{3}{16}$ " and sealed with a suitable sealant; however, any rail joint within 10' measured perpendicular to the face of the curb or parapet shall be welded as shown in the locking edge rail splice detail.  
Cost of parapet sliding plates, embedded plates, and anchorage studs included with Preformed Joint Strip Seal.  
The concrete opening below the strip seal will vary based on the locking edge rail chosen by the Contractor. Deck and parapet lengths shown elsewhere in the plans are dimensioned to the concrete opening, not the joint opening, and are based on the rolled locking edge rail. If the Contractor elects to use a different locking edge rail, dimensional adjustments may be required. One exception to this would be the strip seal joint at the end of the precast bridge approach slab. For these cases the pavement connector length shall be adjusted, not the length of the bridge approach slab.

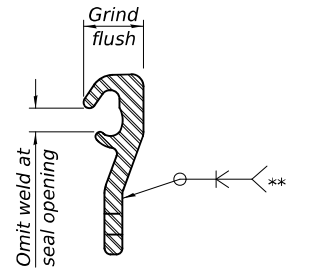


\*  $\frac{5}{8}$ "  $\varnothing$  x 6" studs @ 6" cts. (alternate angled/bent studs with horizontal studs)

$\frac{3}{8}$ "  $\varnothing$  threaded rods in  $\frac{7}{16}$ "  $\varnothing$  holes at 4'-0"  $\pm$  cts. for holding the proper joint opening based on the temperature during the deck pour. Place to miss studs. All rods shall be burned, or sawed off flush with the plates after concrete is set.



\*\* Back gouge not required if complete joint penetration is verified by mock-up.



The inside of the locking edge rail groove shall be free of weld residue.  
Rolled rail shown, welded rail similar.

**BILL OF MATERIAL**

Item	Unit	Total
Preformed Joint Strip Seal	Foot	474

EJ-SS      5-15-2023      (Modified)

FILE NAME: C:\SP\OneDrive - WHKS & CO\Desktop\060\_0014\_0015.dgn



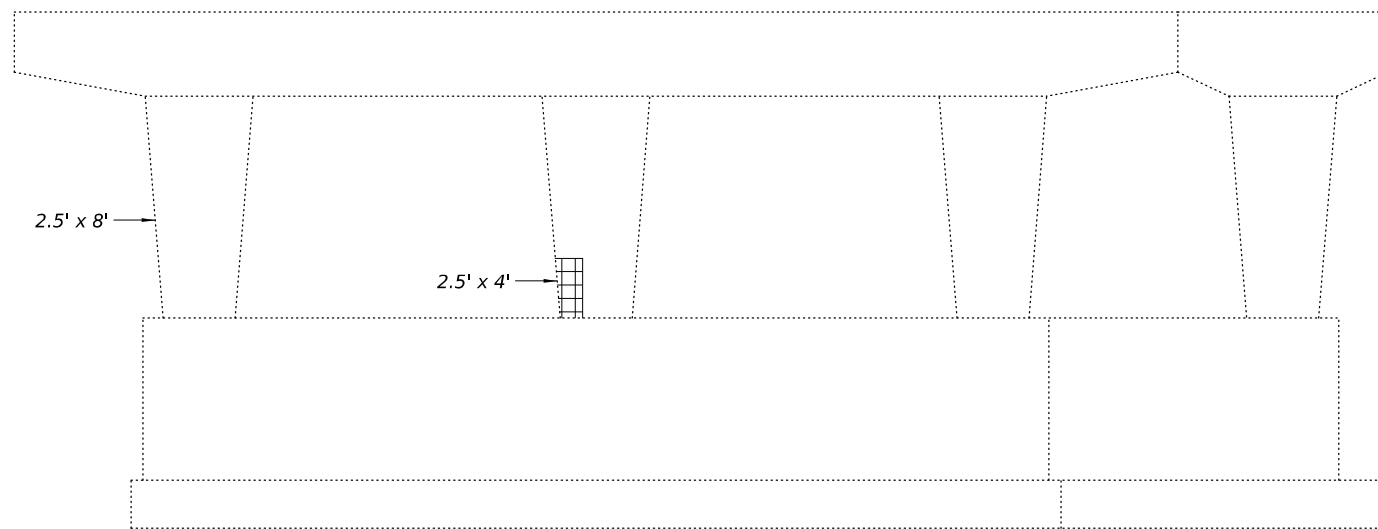
USER NAME = SUSER\$	DESIGNED - CEH	REVISED -
PLOT DATE = 9/27/2024	CHECKED - JLM	REVISED -
PLOT TIME = 8:05:28 AM	DRAWN - DLH	REVISED -
	CHECKED - CEH / JLM	REVISED -

ILLINOIS DEPARTMENT OF TRANSPORTATION

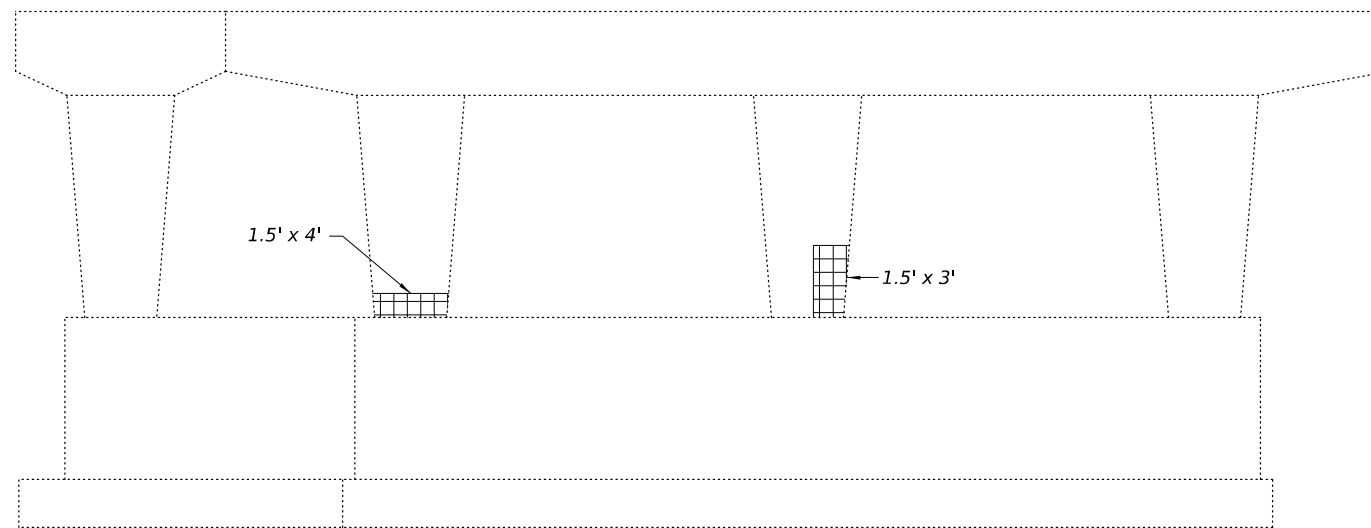
**PREFORMED JOINT STRIP SEAL**  
**STRUCTURE NO. 060-0014 (EB) & 060-0015 (WB)**

SHEET 7 OF 9 SHEETS

FAI RTE.	SECTION	COUNTY	TOTAL SHEETS	SHEET NO.
70	60-7BJR-BDR	MADISON	26	24
CONTRACT NO.				
ILLINOIS FED. AID PROJECT				



**PIER 1 - SOUTH ELEVATION**  
(Looking North)



**PIER 1 - NORTH ELEVATION**  
(Looking South)

**LEGEND**

 Structural repair of concrete ≤ 5".

Note:  
Pier repairs may be done under full traffic or as directed by the Engineer.

**BILL OF MATERIAL**

Item	Unit	Total
Structural Repair of Concrete (Depth equal to or less than 5 inches)	Sq. Ft.	40.5

FILE NAME: C:\SP\OneDrive - WHKS & CO\Desktop\060\_0014\_0015.dgn

design firm  
no. 184001036



USER NAME = \$USERS	DESIGNED - CEH	REVISED -
	CHECKED - JLM	REVISED -
PLOT DATE = 9/27/2024	DRAWN - DLH	REVISED -
PLOT TIME = 8:05:28 AM	CHECKED - CEH / JLM	REVISED -

**ILLINOIS DEPARTMENT OF TRANSPORTATION**

**PIER REPAIRS (EB)**  
**STRUCTURE NO. 060-0014 (EB) & 060-0015 (WB)**

SHEET 8 OF 9 SHEETS

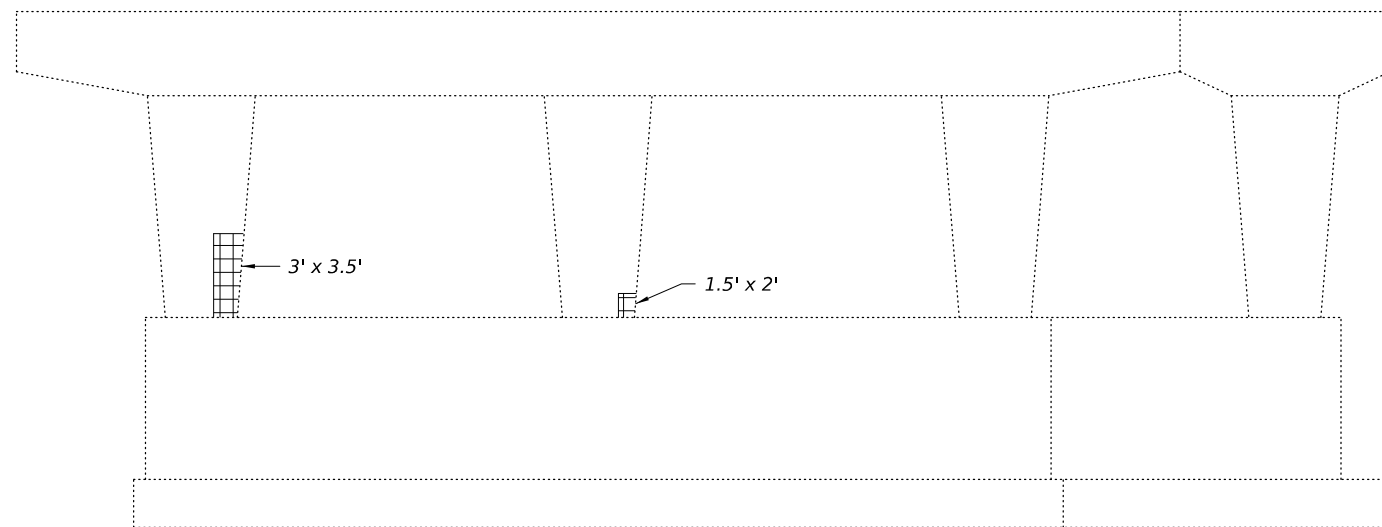
FBI RTE.	SECTION	COUNTY	TOTAL SHEETS	SHEET NO.
70	60-7BJR-BDR	MADISON	26	25
CONTRACT NO.				
ILLINOIS FED. AID PROJECT				



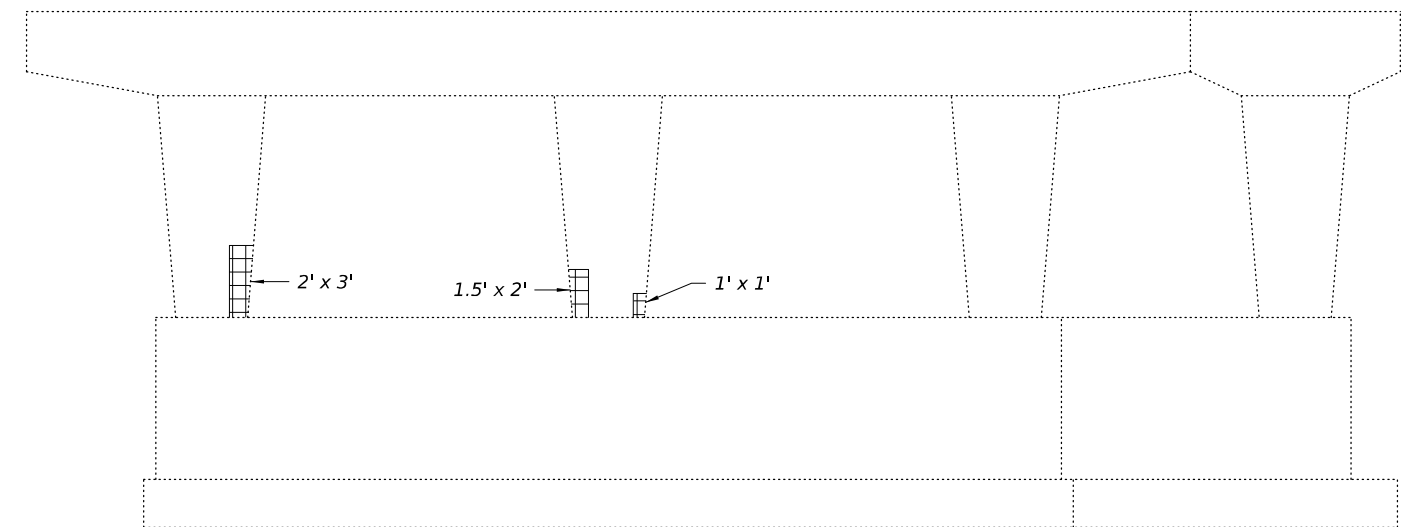
**PIER 1 - SOUTH ELEVATION**  
(Looking North)



**PIER 2 - SOUTH ELEVATION**  
(Looking North)



**PIER 1 - NORTH ELEVATION**  
(Looking South)



**PIER 2 - NORTH ELEVATION**  
(Looking South)

**LEGEND**

 Structural repair of concrete ≤ 5".

Note:  
Pier repairs may be done under full traffic or as directed by the Engineer.

**BILL OF MATERIAL**

Item	Unit	Total
Structural Repair of Concrete (Depth equal to or less than 5 inches)	Sq. Ft.	56.8

FILE NAME: C:\SP\OneDrive - WHKS & CO\Desktop\060\_0014\_0015.dgn

design firm  
no. 184001036



USER NAME = \$USERS	DESIGNED - CEH	REVISED -
	CHECKED - JLM	REVISED -
PLOT DATE = 9/27/2024	DRAWN - DLH	REVISED -
PLOT TIME = 8:05:28 AM	CHECKED - CEH / JLM	REVISED -

**ILLINOIS DEPARTMENT OF TRANSPORTATION**

**PIER REPAIRS (WB)**  
**STRUCTURE NO. 060-0014 (EB) & 060-0015 (WB)**

SHEET 9 OF 9 SHEETS

FAI RTE.	SECTION	COUNTY	TOTAL SHEETS	SHEET NO.
70	60-7BJR-BDR	MADISON	26	26
CONTRACT NO.				
		ILLINOIS	FED. AID PROJECT	