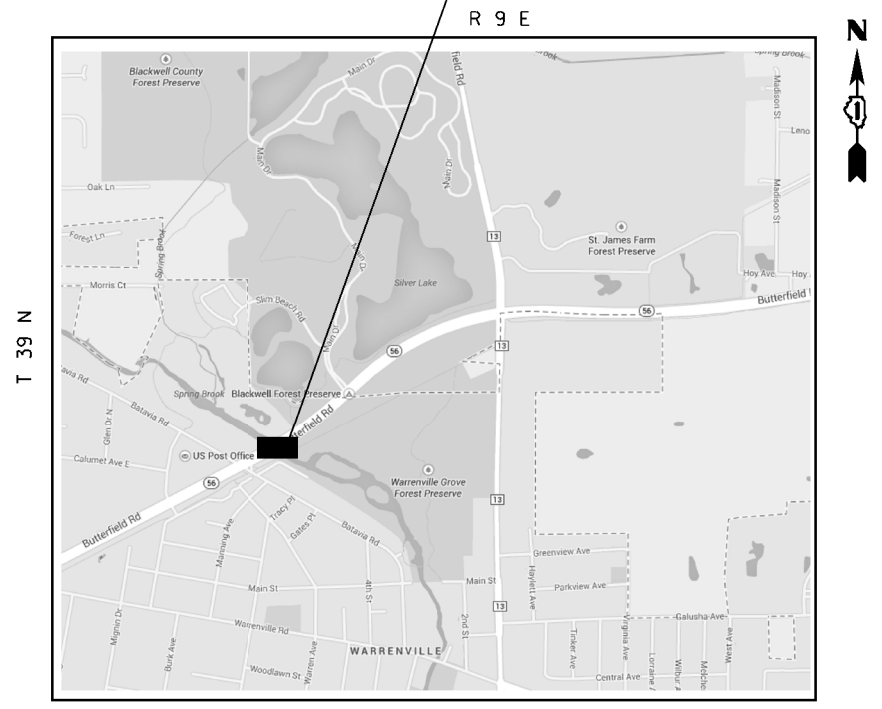
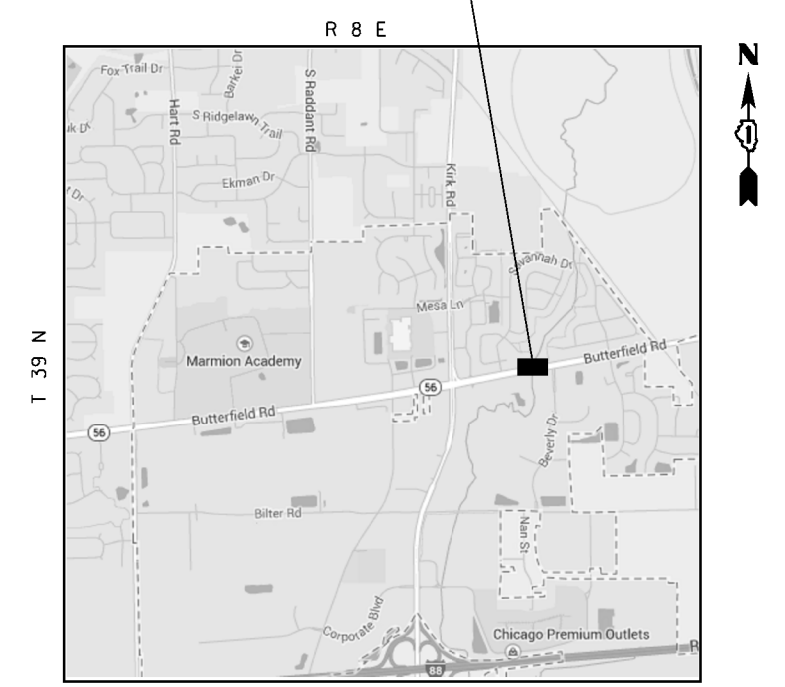


LOCATION NO. 19: SN 022-2027
IL 56 OVER DUPAGE RIVER
CITY OF WARRENVILLE



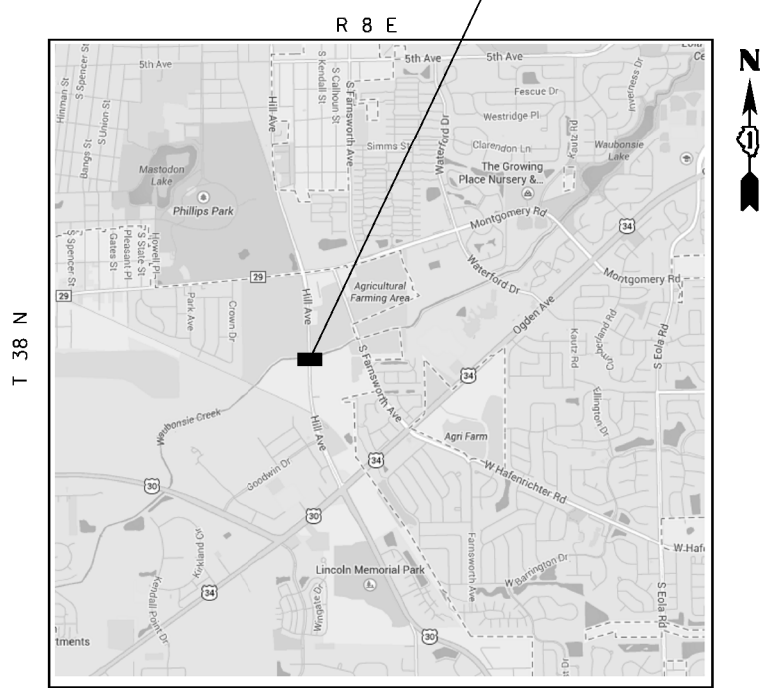
WINFIELD TOWNSHIP

LOCATION NO. 20: SN 045-0028
IL 56 OVER IDIAN CREEK
CITY OF AURORA



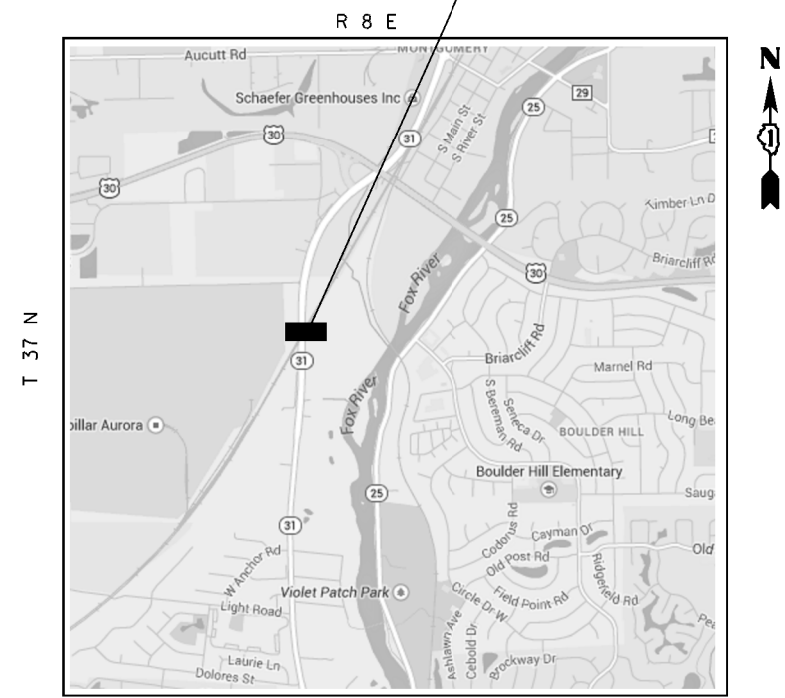
BATAVIA TOWNSHIP

LOCATION NO. 21: SN 045-2023
HILL AVE. OVER WAUBANSEE CREEK
CITY OF AURORA



AURORA TOWNSHIP

LOCATION NO. 22: SN 047-0006
IL 31 OVER RR-BNSF
VILLAGE OF OSWEGO



OSWEGO TOWNSHIP

TRAFFIC DATA

- LOCATION NO. 19: IL 56 OVER DUPAGE RIVER
2009 ADT = 14500
SPEED LIMIT = 50 MPH
- LOCATION NO. 20: IL 56 OVER INDIAN CREEK
2011 ADT = 16700
SPEED LIMIT = 50 MPH
- LOCATION NO. 21: HILL AVE. OVER WAUBANSEE CREEK
2010 ADT = 13600
SPEED LIMIT = 50 MPH
- LOCATION NO. 22: IL 31 OVER RR-BNSF
2013 ADT = 11900
SPEED LIMIT = 45 MPH

FILE NAME =	USER NAME = gulloumefp	DESIGNED -	REVISED -
ci:\pwork\pwork\gulloumefp\0388342\134814-sh-t-plen.dgn		DRAWN -	REVISED -
Default	PLOT SCALE = 100.0000' / 1" =	CHECKED -	REVISED -
	PLOT DATE = 8/22/2014	DATE -	REVISED -

STATE OF ILLINOIS
DEPARTMENT OF TRANSPORTATION

LOCATION MAPS
LOCATION NUMBERS 19 - 22

SCALE:	SHEET 4	OF 6 SHEETS	STA.	TO STA.
--------	---------	-------------	------	---------

ROUTE	SECTION	COUNTY	TOTAL SHEETS	SHEET NO.
VARIOUS	2014-0371	DUPAGE	37	8
			CONTRACT NO. 60Y31	
ILLINOIS FED. AID PROJECT				