

STATE OF ILLINOIS  
 DEPARTMENT OF TRANSPORTATION  
 DIVISION OF HIGHWAYS

**PROPOSED  
 HIGHWAY PLANS**

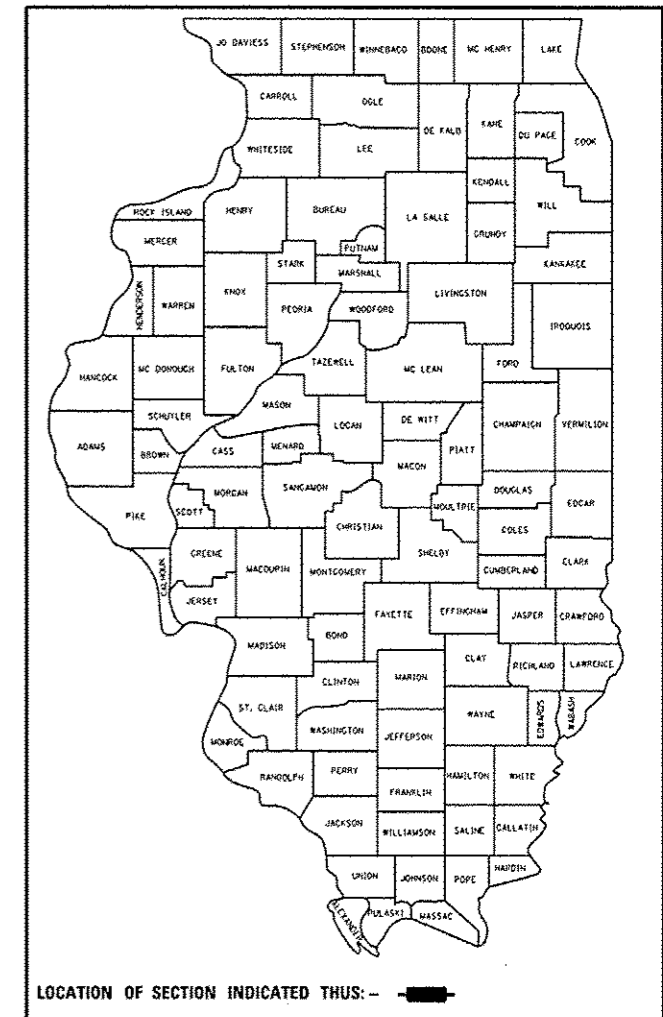
VARIOUS ROUTES  
 VARIOUS LOCATIONS: S OF ILL 38  
 SECTION 2014-0371  
 BRIDGE DECK SEALING  
 DUPAGE, KANE & KENDALL COUNTIES

C-91-348-14

ROUTE	SECTION	COUNTY	TOTAL SHEETS	SHEET NO.
VARIOUS	2014-0371	DUPAGE	37	1
ILLINOIS			CONTRACT NO. 60Y31	

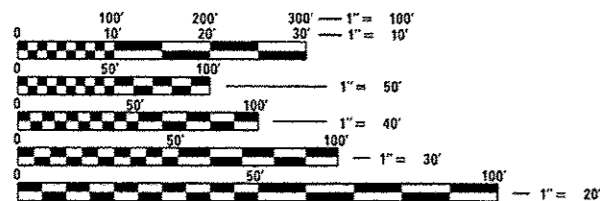
\* 37 + 3 = 40

D-91-348-14



FOR INDEX OF SHEETS, SEE SHEET NO. 2  
 IMPROVEMENTS ARE LOCATED IN THE  
 CITIES OF  
 WEST CHICAGO, DARIEN, OAKBROOK TERRACE  
 WARRENVILLE, AURORA  
 THE VILLAGES OF  
 LISLE, HINSDALE, DOWNERS GROVE,  
 WOODRIDGE, OSWEGO, MONTGOMERY,  
 OAK BROOK  
 AND  
 OSWEGO, BRISTOL, BATAVIA,  
 AURORA, WINFIELD, YORK  
 AND LISLE  
 TOWNSHIPS

SEE LOCATION MAPS  
 SHEETS 5 - 9



FULL SIZE PLANS HAVE BEEN PREPARED USING STANDARD  
 ENGINEERING SCALES. REDUCED SIZED PLANS WILL NOT  
 CONFORM TO STANDARD SCALES. IN MAKING MEASUREMENTS  
 ON REDUCED PLANS, THE ABOVE SCALES MAY BE USED.

J.U.L.I.E.  
 JOINT UTILITY LOCATION INFORMATION FOR EXCAVATION  
 1-800-892-0123  
 OR 811

PROJECT ENGINEER: ALAIN MIDY (847) 221-3056

PROJECT MANAGER ISSAM RAYYAN (847) 705-4178

CONTRACT NO. 60Y31

STATE OF ILLINOIS  
 DEPARTMENT OF TRANSPORTATION  
 DIVISION OF HIGHWAYS

SUBMITTED August 14, 2014  
  
 DEPUTY DIRECTOR OF HIGHWAYS, REGION ENGINEER

Oct 17, 2014  
 JOHN D. BARANZOLI, P.E.  
 ENGINEER OF DESIGN AND ENVIRONMENT

Oct 9, 2014  
 Omer Osman, P.E.  
 DIRECTOR OF HIGHWAYS, CHIEF ENGINEER

PRINTED BY THE AUTHORITY  
 OF THE STATE OF ILLINOIS