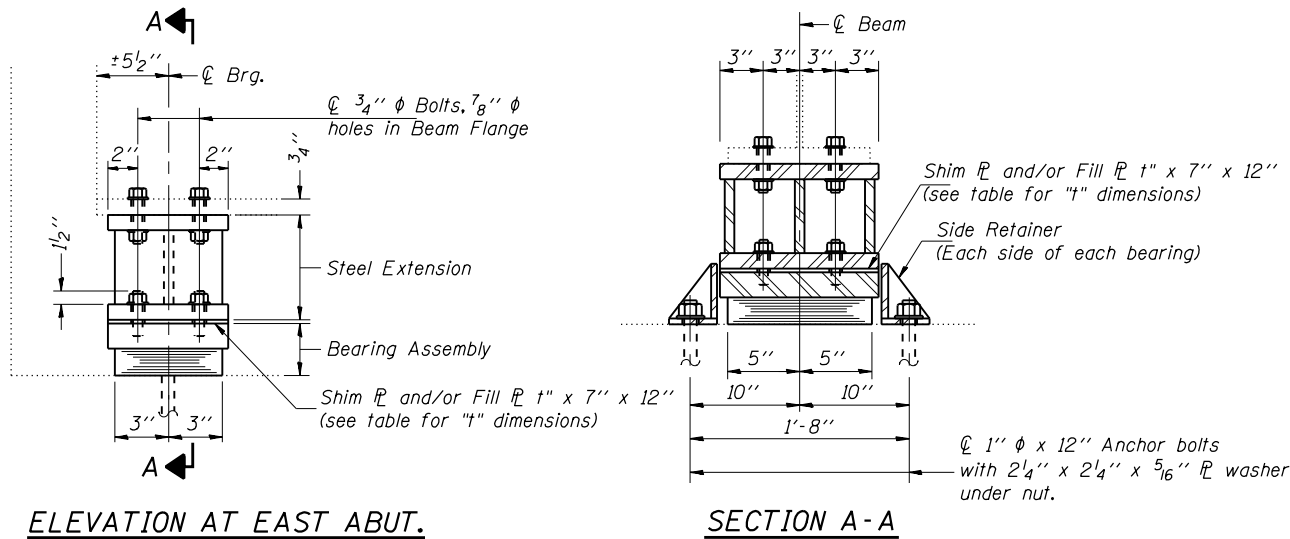
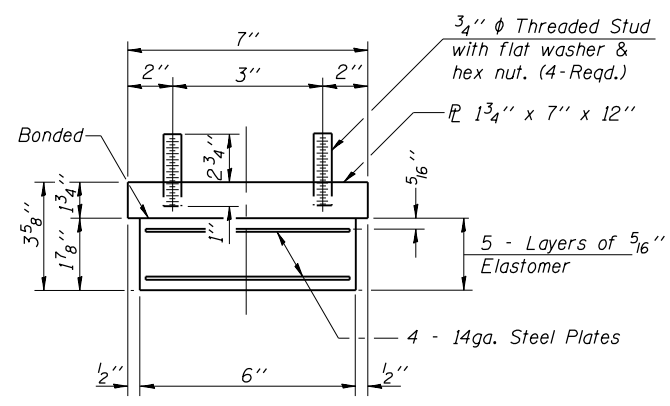
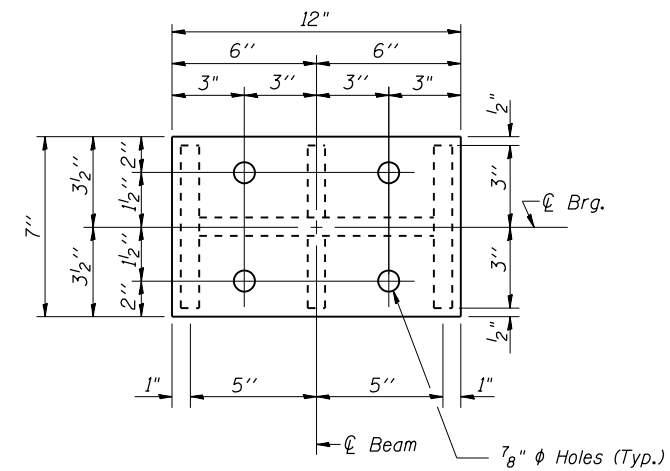


STATE OF ILLINOIS
DEPARTMENT OF TRANSPORTATION



TYPE I ELASTOMERIC EXP. BRG.

Notes:
Anchor bolts shall be ASTM F1554 all-thread (or an Engineer-approved alternate material) of the grade(s) and diameter(s) specified. ASTM A307 Grade C anchor bolts may be used in lieu of ASTM F1554 Grade 36 (Fy=36ksi). The corresponding specified grade of AASHTO M314 anchor bolts may be used in lieu of ASTM F1554.
Drilled and set anchor bolts shall be installed according to Article 521.06 of the Standard Specifications.
Side retainers and other steel members required for the bearing assembly shall be included in the cost of Elastomeric Bearing Assembly, Type I.
The minimum jack capacity required is 35 Tons.
Existing diaphragm removal and reinstallation may be required to facilitate drilling holes, cost to be included with "Jack and Remove Existing Bearings".
Prior to ordering any material, the Contractor shall verify in the field all bearing height and shim thickness dimensions.
Two 1/8 in. adjusting shims shall be provided for each bearing in addition to all other plates or shims and placed as shown on bearing details.
New steel extensions, connection bolts, Fill R's and Shim R's are included in "Furnishing and Erecting Structural Steel".



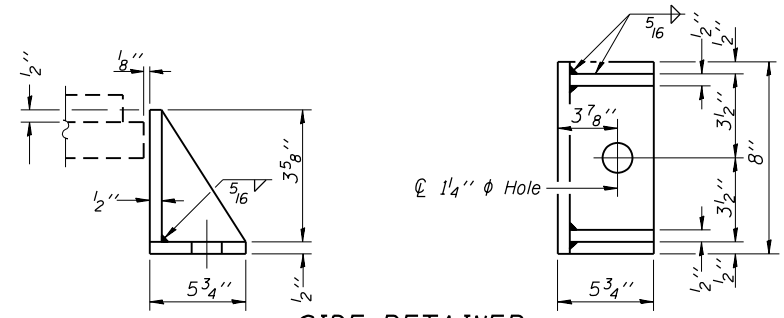
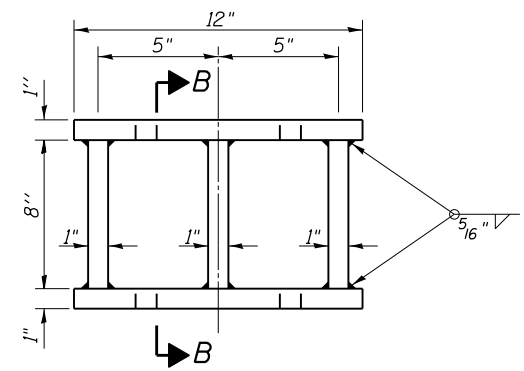
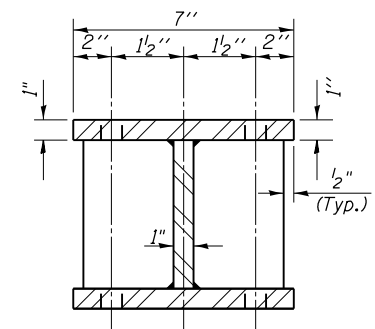
Note: Shim plates shall not be placed under Bearing Assembly.

GIRDER REACTIONS

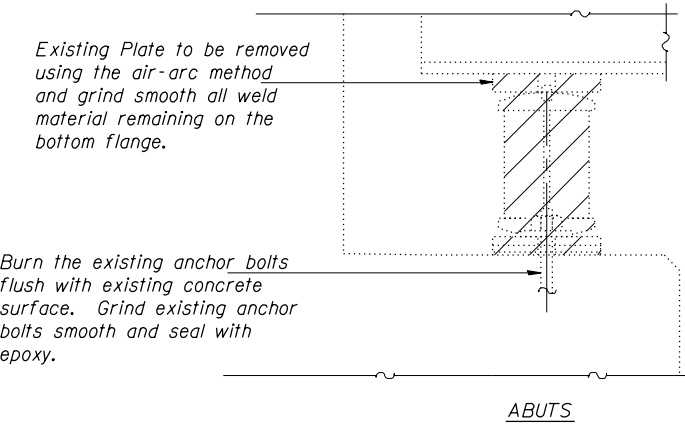
R _L	(K)	14.6
R _R	(K)	30.7
Imp.	(K)	9.1
R (Total)	(K)	54.4

FILL R "t" DIMENSIONS

LOCATION	"t"
Beam 1, 3, 4, & 6	1 1/4"
Beam 2 & 5	1 1/2"
Beam 1A & 6A	NA



Equivalent rolled angle with stiffeners will be allowed in lieu of welded plates.



Cost is included with Jack and Remove Existing Bearings

BILL OF MATERIAL

Item	Unit	Total
Elastomeric Bearing Assembly Type I	Each	8
Anchor Bolts, 1"	Each	16
Jack and Remove Existing Bearings	Each	8
Furnishing and Erecting Structural Steel	Pound	1210

EAST ABUTMENT BEARING DETAILS
STRUCTURE NO. 041-0026

*D9 CM BRIDGE REPAIR 2015-2