

**NOTE A**  
1 3/8" Holes - 1" deep in top R.  
for pintles. Thread or press fit  
pintles into bottom R.

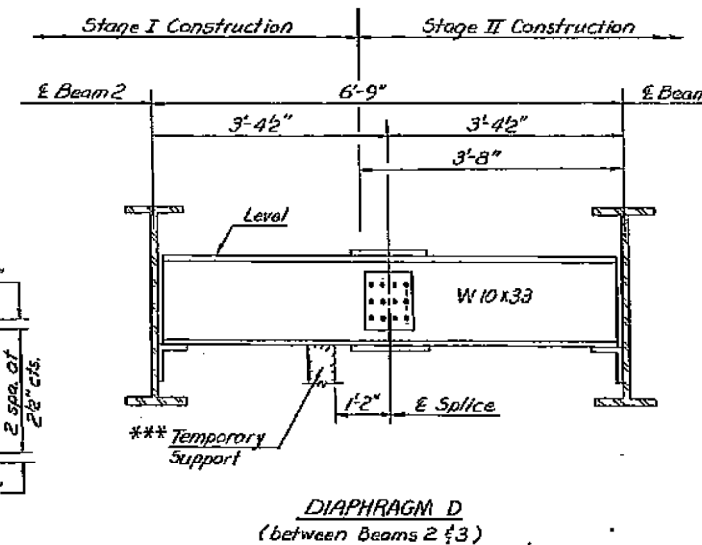
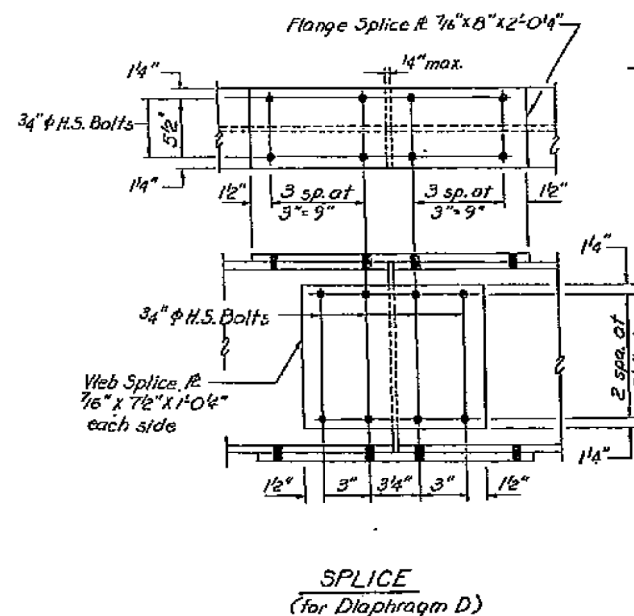
**NOTE B**  
1/2" Holes for 1" anchor bolts.  
3/16" x 2 1/2" x 2 1/2" R. Washers  
under nut.

**NOTE C**  
1 3/8" Holes 1" deep in top R.  
only for 1 1/4" pintles.

**NOTES ON SETTING OF ANCHOR BOLTS AT EXP. BRGS.**

- a) D\* (Side of brg. away from fixed brg.)  
D\* = 1/8" per each 100' of expansion for every 15° fall below the normal temp. of 50°F.
- D\*\* (Side of brg. toward fixed brg.)  
D\*\* = 1/8" per each 100' of expansion for every 15° rise above the normal temp. of 50°F.
- b) After beams have been erected and dimensions D\* or D\*\* determined, holes shall be drilled and anchor bolts shall be grouted in place. All fixed anchor bolts may be built into the masonry.

**BEARING ASSEMBLY DETAILS**



**DIAPHRAGM D ERECTION PROCEDURE**  
(between Beams 2 & 3)

- 1) Full length diaphragm shall be cut in half.
- 2) Attach 1/2 of diaphragm to Beam 2 during Stage I Construction and support in place (level).
- 3) The top flange splice plate shall be connected prior to pouring concrete for Stage I Construction.
- 4) The second half of the diaphragm shall be spliced on and connected to Beam 3 (during Stage II Construction) prior to removal of the temporary support.
- 5) Concrete for Stage II Construction can be poured after the diaphragm is fully erected.

Notes: Diaphragms and Diaphragm Splice Plates shall be AASHTO M-222.  
All Bearing materials shall be AASHTO M-222.

\*\*\*Cost of Temporary Support shall be incidental to the cost of Structural Steel.

STRUCTURAL STEEL DETAILS  
EAS. RT. 1907 SEC. 17B-2  
ALEXANDER COUNTY  
STATION 460+90.00

FOR INFORMATION ONLY

DESIGNED	Rick Brunette	EXAMINED	June 20, 1983
CHECKED	M. Bloxdorf	PASSED	
DRAWN	Rick Brunette	APPROVED	
CHECKED	M. Bloxdorf		

I-2-B 6-1-82