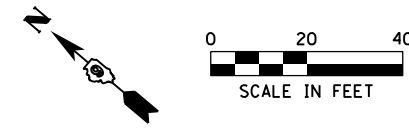
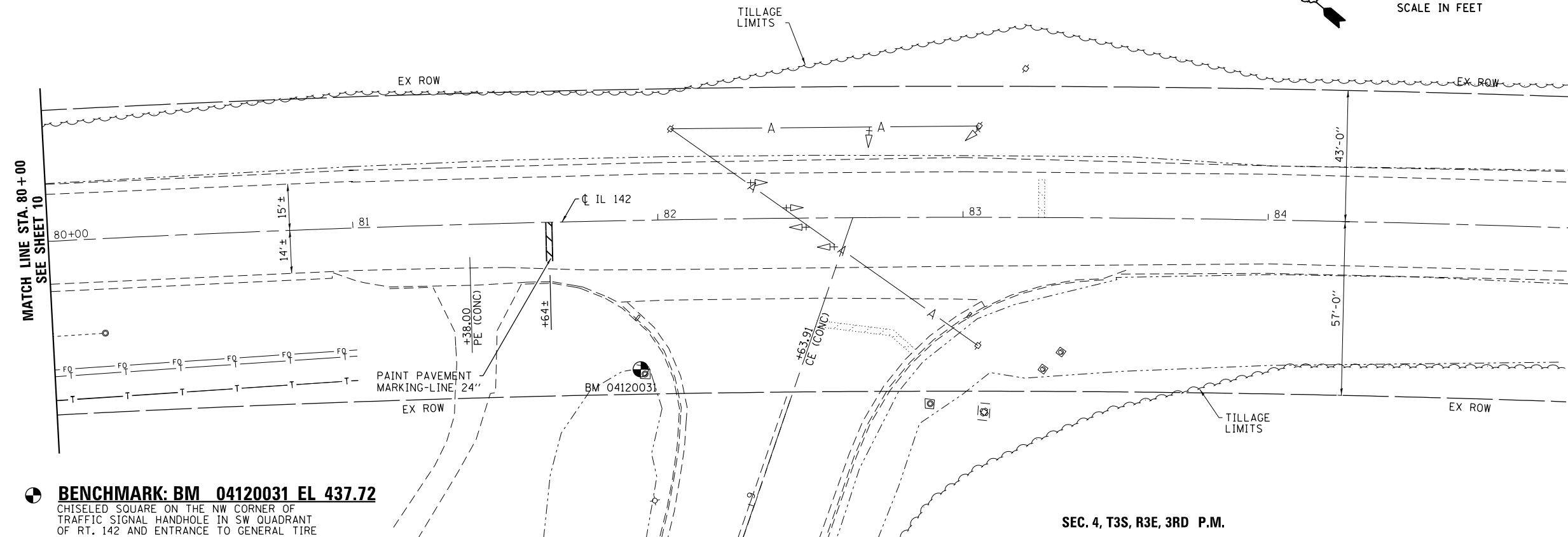


SEC. 4, T3S, R3E, 3RD P.M.

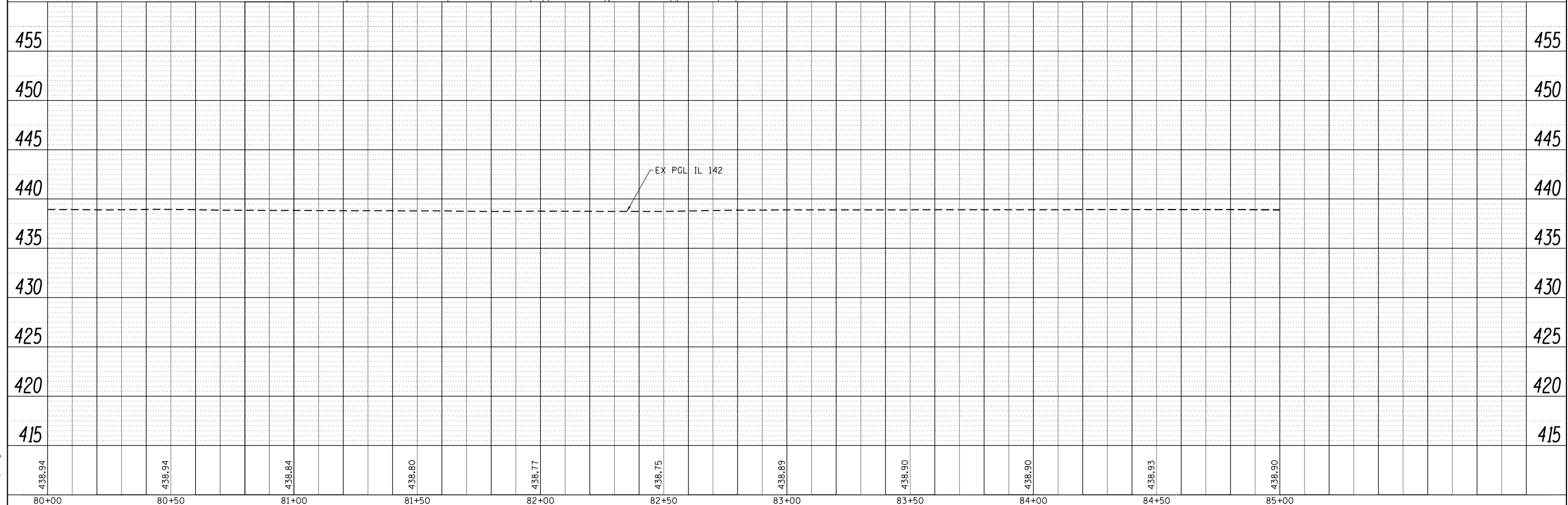


EXIST. CURVE 2  
 PI STA. = 83+00.00  
 $\Delta = 7^\circ 51' 00''$  (RT)  
 $D = 1^\circ 00' 17''$   
 $R = 5,703.11'$   
 $T = 391.30'$   
 $L = 781.37'$   
 $E = 13.41'$   
 $e = \text{---}$   
 $T.R. = NA$   
 $S.E. RUN = NA$   
 $P.C. STA. = 79+08.70$   
 $P.T. STA. = 86+90.07$



**BENCHMARK: BM 04120031 EL 437.72**  
 CHISELED SQUARE ON THE NW CORNER OF  
 TRAFFIC SIGNAL HANDHOLE IN SW QUADRANT  
 OF RT. 142 AND ENTRANCE TO GENERAL TIRE

SEC. 4, T3S, R3E, 3RD P.M.



FILE NAME = D:\978210-sht-plnprof.dgn  
 MODEL = Default  
 PLOT DRIVER = IODI\_PDF.plt.ctb

QI QUIGG ENGINEERING INC	USER NAME = twalker FILE NAME = D:\978210-sht-plnprof.dgn PLOT SCALE = 40.0000' / in. PLOT DATE = 5/29/2014	DESIGNED - MCV DRAWN - CMM CHECKED - MTM DATE - 4/25/2014	REVISED - REVISED - REVISED - REVISED -	STATE OF ILLINOIS DEPARTMENT OF TRANSPORTATION	IL RTE 142 PLAN & PROFILE SN 041-2021	SCALE: 1"=20' SHEET NO. 2 OF 2 SHEETS STA. 80+00 TO STA. 85+00	F.A.P. RTE. = 849 SECTION = 113B-1 COUNTY = JEFFERSON TOTAL SHEETS = 36 SHEET NO. = 11 CONTRACT NO. 78210	ILLINOIS FED. AID PROJECT
-----------------------------	--	--	--	---	--	--	--	---------------------------