

F.A. RTE.	SECTION	COUNTY	TOTAL SHEETS	SHEET NO.
*	4-Q-1/10-3BR-1	JERSEY/RANDOLPH	7	1
* FAP 304/ FAS 1857A ILLINOIS			CONTRACT NO. 76H29	

11-21-14 LETTING ITEM 103

STATE OF ILLINOIS
DEPARTMENT OF TRANSPORTATION
DIVISION OF HIGHWAYS

**PROPOSED
HIGHWAY PLANS**

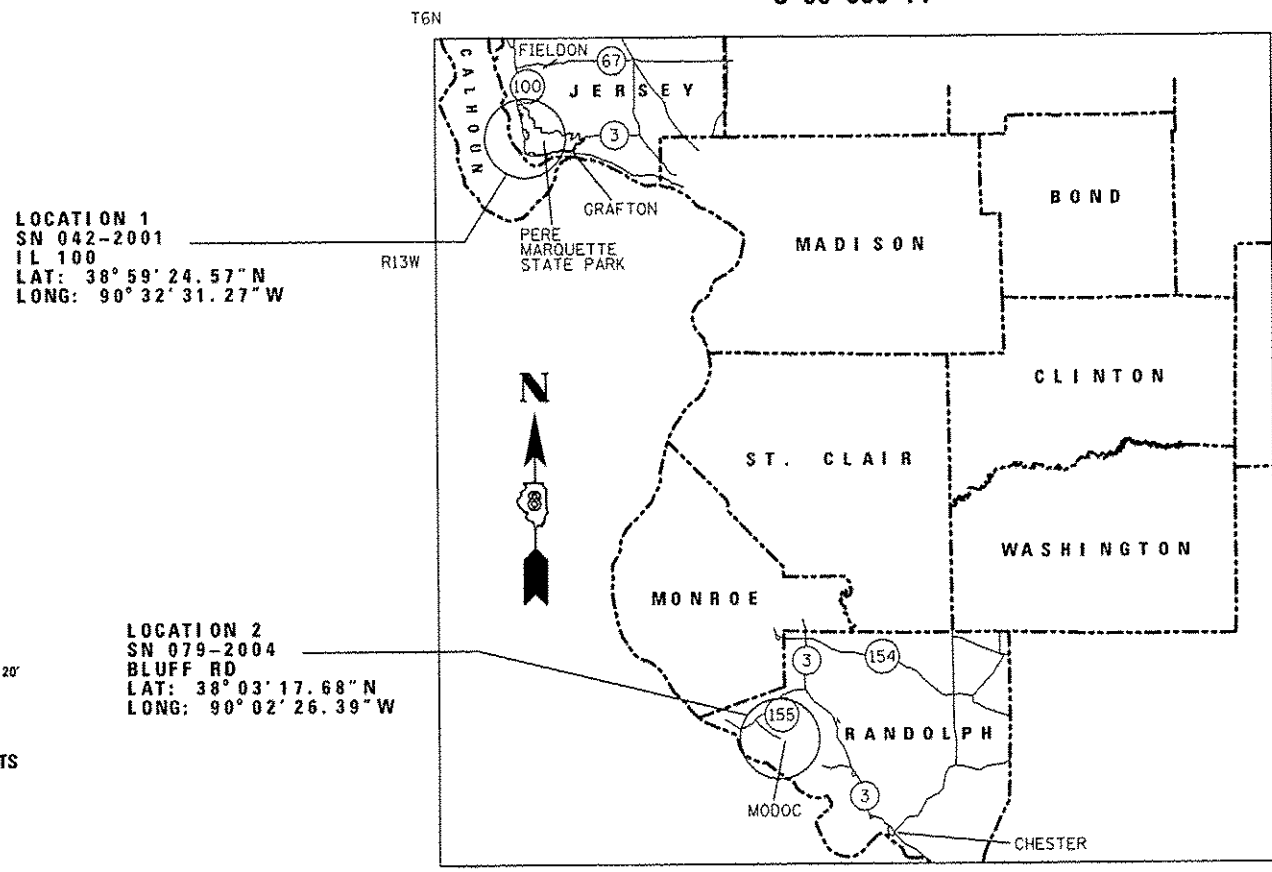
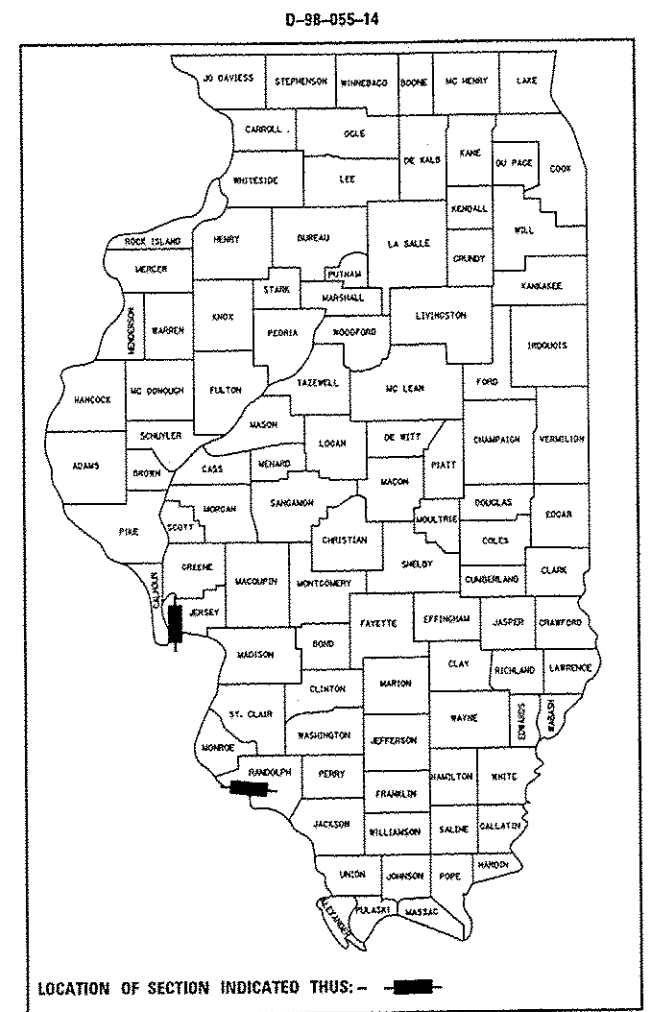
FAP ROUTE 304 /FAS ROUTE 1857A (IL 100/
BLUFF ROAD)
SECTION 4-Q-I, 10-3BR-I

RIP RAP & CULVERT CLEANING
JERSEY & RANDOLPH COUNTIES

C-98-056-14

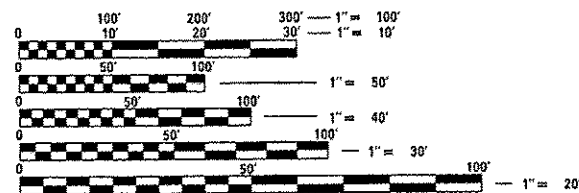
INDEX OF SHEETS

- 1 COVER SHEET/ INDEX OF SHEETS
- 2 HIGHWAY STANDARDS, GENERAL NOTES, AND COMMITMENTS
- 3 SUMMARY OF QUANTITIES
- 4 LOCATION MAP AND SCHEDULES
- 5 SN 042-2001 (IL 100) PLAN SHEET
- 6-7 SN 079-2004 (BLUFF ROAD) PLAN SHEET



LOCATION 1
SN 042-2001
IL 100
LAT: 38° 59' 24.57" N
LONG: 90° 32' 31.27" W

LOCATION 2
SN 079-2004
BLUFF RD
LAT: 38° 03' 17.68" N
LONG: 90° 02' 26.39" W



FULL SIZE PLANS HAVE BEEN PREPARED USING STANDARD ENGINEERING SCALES. REDUCED SIZED PLANS WILL NOT CONFORM TO STANDARD SCALES. IN MAKING MEASUREMENTS ON REDUCED PLANS, THE ABOVE SCALES MAY BE USED.

J.U.L.I.E.
JOINT UTILITY LOCATION INFORMATION FOR EXCAVATION
1-800-892-0123
OR 811

PROJECT ENGINEER: TIM PADGETT 618-346-3325
PROJECT MANAGER: PHILIP COPPERNOLL 618-346-3480

CONTRACT NO. 76H29

GROSS LENGTH = 71.20 FT. = 0.013 MILE
NET LENGTH = 71.20 FT. = 0.013 MILE

STATE OF ILLINOIS
DEPARTMENT OF TRANSPORTATION
DIVISION OF HIGHWAYS

SUBMITTED *July 24 2014*
[Signature]
DEPUTY DIRECTOR OF HIGHWAYS, REGION 5 ENGINEER

Oct 17 2014
[Signature]
ENGINEER OF DESIGN AND ENVIRONMENT

Oct 17 2014
[Signature]
DIRECTOR OF HIGHWAYS, CHIEF ENGINEER

**PRINTED BY THE AUTHORITY
OF THE STATE OF ILLINOIS**

STANDARDS

000001-06
 001006
 542401-01
 701001-02
 701006-05
 701201-04
 701901-03

COMMITMENTS

NONE

GENERAL NOTES

- ① ILLINOIS STATE LAW REQUIRES A 48-HOUR NOTICE TO BE GIVEN TO UTILITIES BEFORE DIGGING. FIELD MARKING OF FACILITIES MAY BE OBTAINED BY CONTACTING J.U.L.I.E. OR FOR NON-MEMBERS, THE UTILITY COMPANY DIRECTLY. AGENCIES KNOWN TO HAVE FACILITIES WITHIN THE PROJECT AREA ARE AS FOLLOWS:

UTILITY	ABOVE GROUND	BELOW GROUND
•AMEREN ILLINOIS (GAS & ELECTRIC)	X	X
•CITY OF CHESTER (GAS, WATER & SANITARY)		X
•GRAFTON TELEPHONE COMPANY (COMMUNICATIONS)	X	X
•HARRISONVILLE TELEPHONE COMPANY (COMMUNICATIONS)	X	X

MEMBERS OF J.U.L.I.E. (800)-892-0123 OR 811 ARE INDICATED BY *. NON J.U.L.I.E. MEMBERS MUST BE NOTIFIED INDIVIDUALLY.

- ② "ROAD CONSTRUCTION AHEAD" SIGNS SHALL BE PLACED AT THE BEGINNING AND END OF THE PROJECT PLUS THE INTERSECTING SIDE ROADS, AND WILL BE INCLUDED IN THE TRAFFIC CONTROL PAY ITEMS. ALL CONSTRUCTION SIGNS SHALL BE FLUORESCENT ORANGE. (48" x 48")
- ③ THE CONTRACTOR AND ENGINEER SHALL BE AWARE THAT NO SURVEY WAS PERFORMED FOR THIS PROJECT. THE STATIONING, TOPOGRAPHY, AND QUANTITIES SHOWN IN THE PLANS WERE CREATED USING MICROFILM AND FIELD MEASUREMENTS. ALL SHALL BE ASSUMED TO BE APPROXIMATE. THE CONTRACTOR SHALL VERIFY DIMENSIONS AND CONDITIONS IN THE FIELD PRIOR TO CONSTRUCTION AND ORDERING OF MATERIALS.
- ④ NO OVERNIGHT LANE CLOSURES WILL BE ALLOWED.

FILE NAME =	USER NAME = burnsideam	DESIGNED -	REVISED -	STATE OF ILLINOIS DEPARTMENT OF TRANSPORTATION	HIGHWAY STANDARDS, GENERAL NOTES, AND COMMITMENTS	F.A. RTE.	SECTION	COUNTY	TOTAL SHEETS	SHEET NO.
c:\pwork\pwork\burnsideam\d0309129\p	en_sheets_eng.dgn	DRAWN -	REVISED -			*	4-0-1, 10-38R-1	JERSEY/RANDOLPH	7	2
	PLOT SCALE = 100.0000' / 1"	CHECKED -	REVISED -			* FAP 304/ FAS 1857A		CONTRACT NO. 76H29		
	PLOT DATE = 7/23/2014	DATE -	REVISED -			SCALE:	SHEET NO. OF SHEETS	STA. TO STA.	FED. ROAD DIST. NO.	ILLINOIS FED. AID PROJECT

SUMMARY OF QUANTITIES

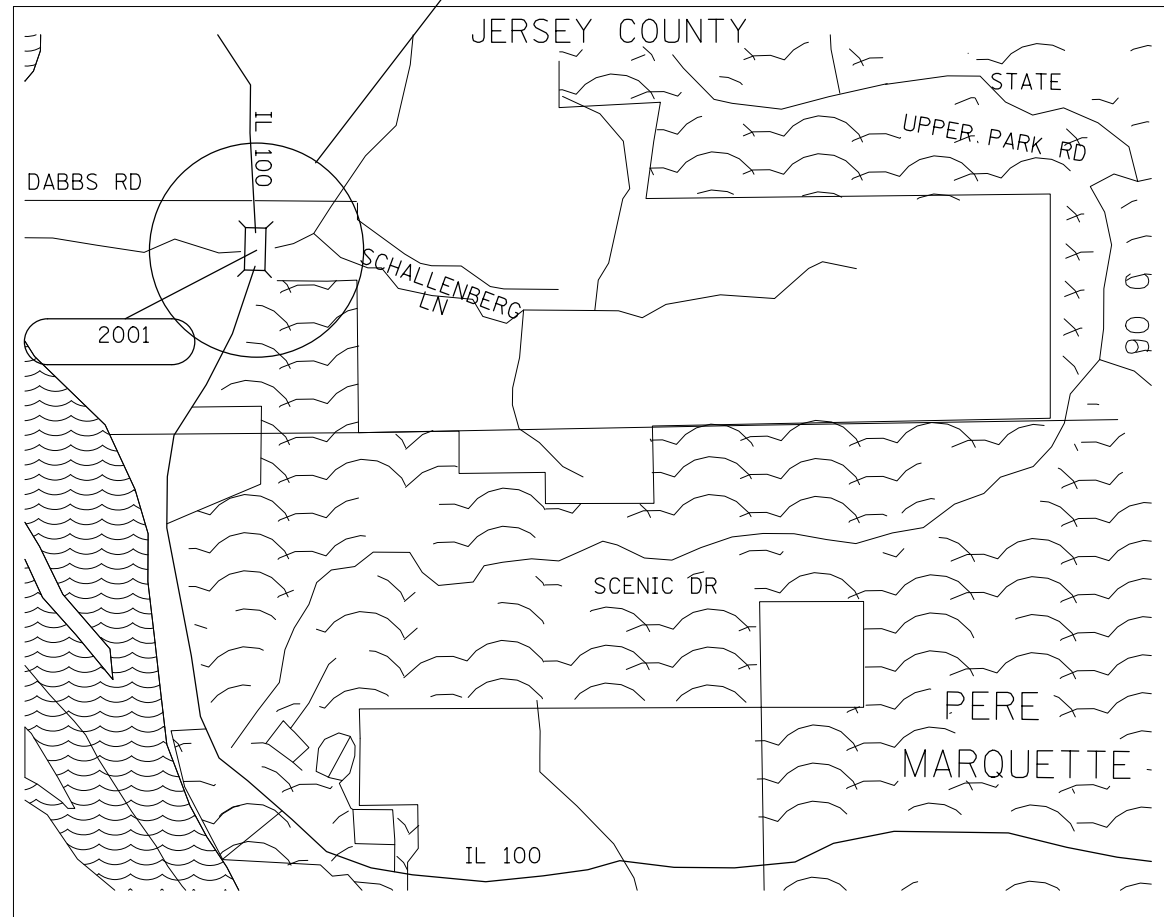
100%
STATE

CODE NO.	ITEM	UNIT	TOTAL QUANTITY	BOX CULVERT	BOX CULVERT
				0044 042-2001 JERSEY CO	0044 079-2004 RANDOLPH CO
20201200	REMOVAL AND DISPOSAL OF UNSUITABLE MATERIAL	CU YD	261		261
20400800	FURNISHED EXCAVATION	CU YD	9		9
28100107	STONE RIPRAP, CLASS A4	SQ YD	230	108	122
28200200	FILTER FABRIC	SQ YD	230	108	122
542D0229	PIPE CULVERTS, CLASS D, TYPE 1 24"	FOOT	60		60
54213879	STEEL END SECTIONS 24"	EACH	1		1
67100100	MOBILIZATION	L SUM	1	0.5	0.5
70100450	TRAFFIC CONTROL AND PROTECTION, STANDARD 701201	L SUM	1	0.5	0.5
X0323265	REMOVE EXISTING RIPRAP	SQ YD	108	108	
Z0015500	DEBRIS REMOVAL	L SUM	1	1	

12

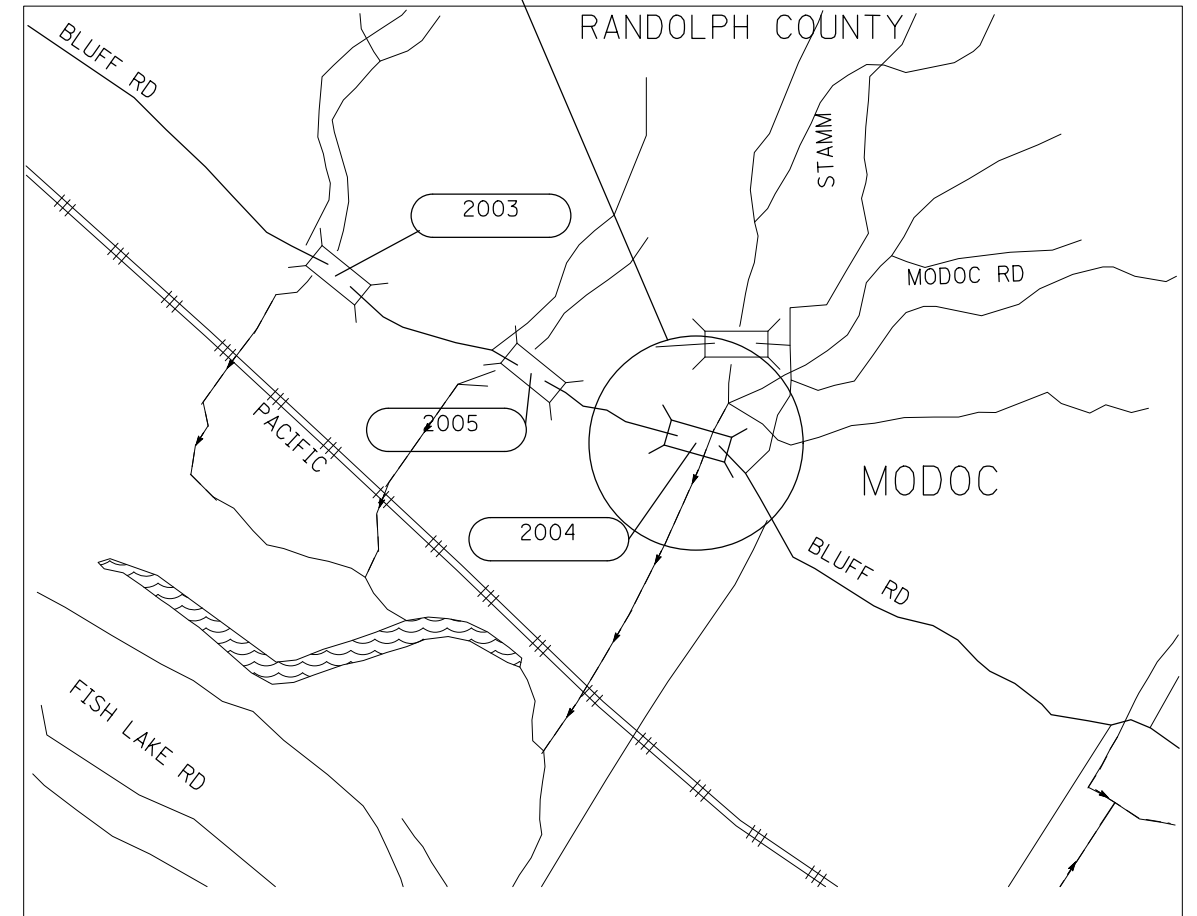
FILE NAME =	USER NAME = burnsideem	DESIGNED -	REVISED -	STATE OF ILLINOIS DEPARTMENT OF TRANSPORTATION	SUMMARY OF QUANTITIES	F.A. RTE.	SECTION	COUNTY	TOTAL SHEETS	SHEET NO.	
at:\p\work\p\dot\burnsideem\0309129\17	on sheets_eng.dgn	DRAWN -	REVISED -			*	4-0-1/10-3BR-1	JERSEY/RANDOLPH	7	3	
	PLOT SCALE = 100.0000' / 1" =	CHECKED -	REVISED -			* FAP 304/ FAS 1857A		CONTRACT NO. 76H29			
	PLOT DATE = 7/23/2014	DATE -	REVISED -			SCALE: SHEET OF SHEETS STA. TO STA.		[ILLINOIS] FED. AID PROJECT			

PROJECT LOCATION
SN 042-2001
IL 100



NOT TO SCALE

PROJECT LOCATION
SN 079-2004
BLUFF ROAD



NOT TO SCALE

PIPE CULVERT		
LOCATION	PIPE CULVERTS, CLASS D, TYPE 1 24" (FOOT)	FURNISH EXCAVATION (CU YD)
BLUFF ROAD NORTH	60	9
TOTAL:	60	9

REMOVAL AND DISPOSAL OF UNSUITABLE MATERIAL	
LOCATION	REMOVAL AND DISPOSAL OF UNSUITABLE MATERIAL (CU YD)
BLUFF ROAD	95.0
BARREL #1	26.5
BARREL #2	2.0
BARREL #3	55.0
AREA #1	22.0
AREA #2	9.0
AREA #3	29.0
AREA #4	22.0
AREA #5	0.5
AREA #6	
TOTAL:	261

STONE RIPRAP CLASS A4			
LOCATION	FILTER FABRIC (SQ YD)	STONE RIPRAP CLASS A4 (SQ YD)	REMOVE EXISTING RIPRAP (SQ YD)
IL 100 EAST	108	108	108
BLUFF ROAD NORTH	64	64	
BLUFF ROAD SOUTH	58	58	
TOTAL:	230	230	108

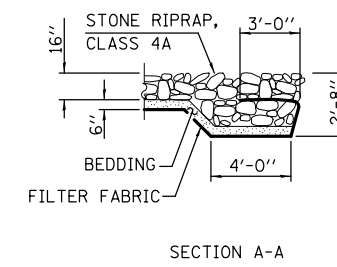
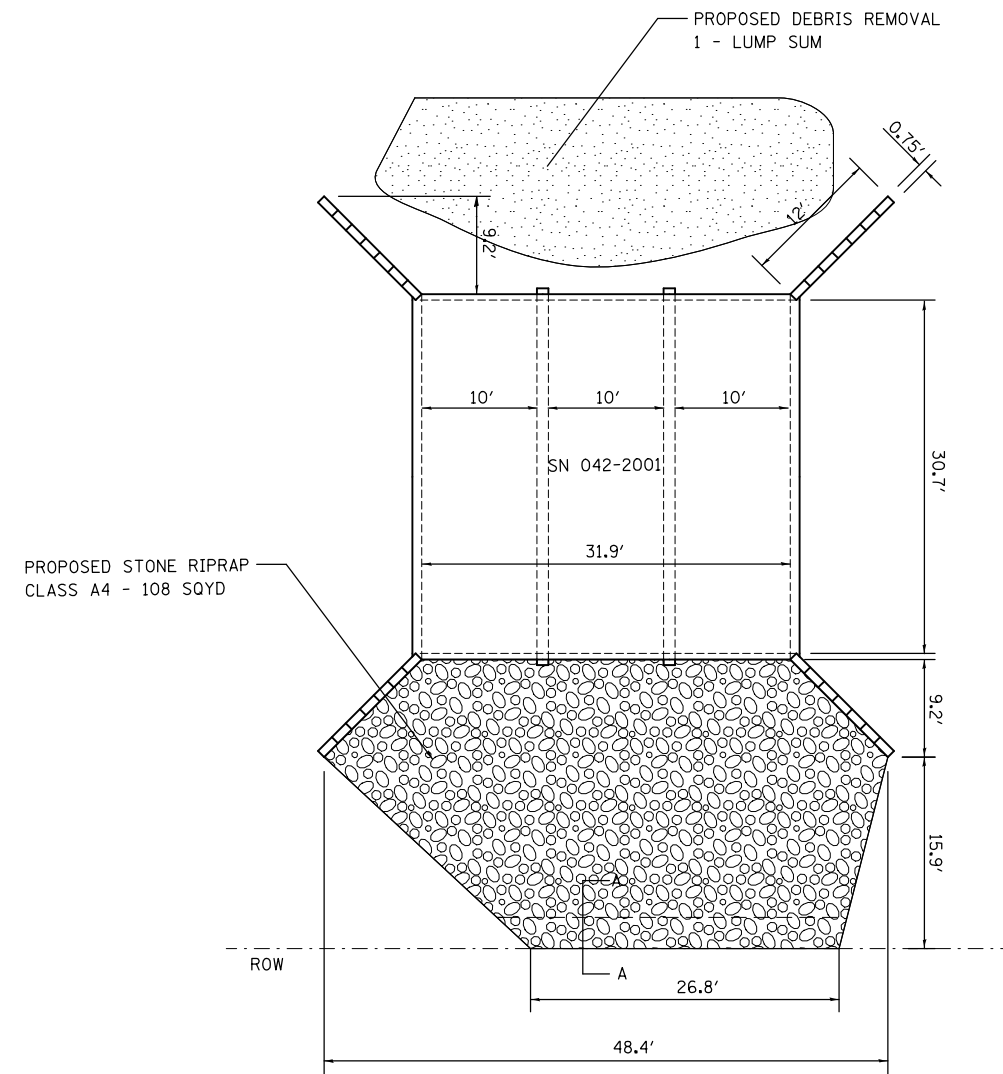
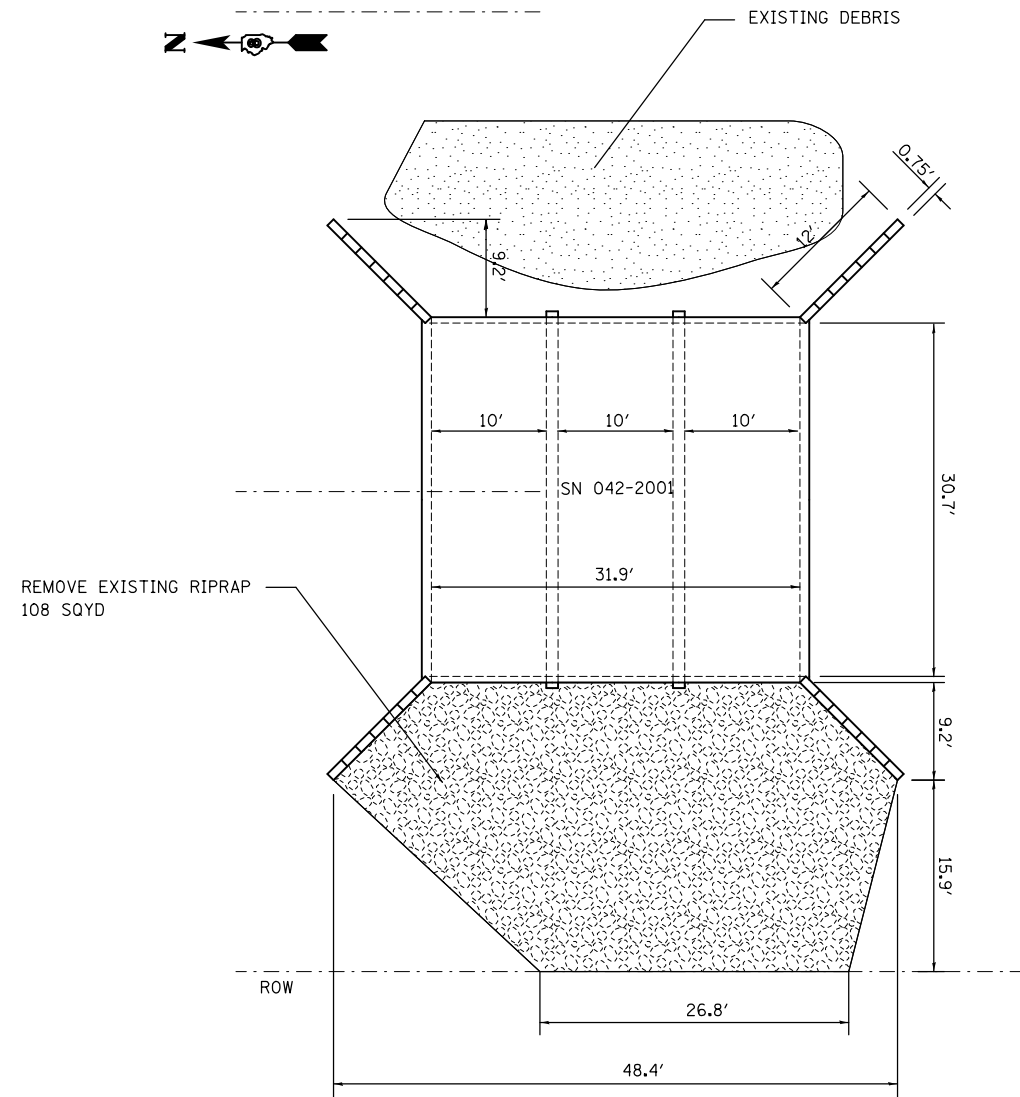
FILE NAME =	USER NAME = burnsideem	DESIGNED -	REVISED -
et:\pw\work\p\dot\burnsideem\d0389129\Plan sheets.enga.dgn		DRAWN -	REVISED -
	PLOT SCALE = 100.0000' / 1"	CHECKED -	REVISED -
	PLOT DATE = 7/23/2014	DATE -	REVISED -

STATE OF ILLINOIS
DEPARTMENT OF TRANSPORTATION

LOCATION MAP /SCHEDULES

SCALE: SHEET NO. OF SHEETS STA. TO STA.

F.A. RTE.	SECTION	COUNTY	TOTAL SHEETS	SHEET NO.
*	4-0-I, 10-3BR-I	JERSEY/RANDOLPH	7	4
* FAP 304/ FAS 1857A			CONTRACT NO. 76H29	
FED. ROAD DIST. NO.		ILLINOIS FED. AID PROJECT		



NOT TO SCALE

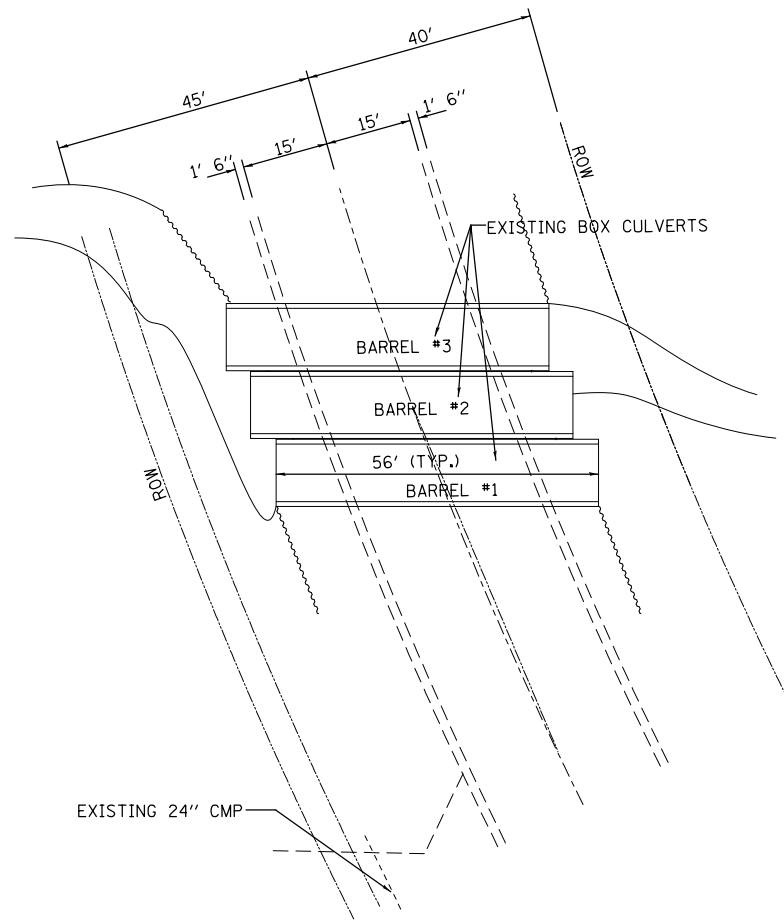
FILE NAME =	USER NAME = burnsideem	DESIGNED -	REVISED -
et:\pw_work\p\dot\burnsideem\d0389129\Plan sheets_enga.dgn		DRAWN -	REVISED -
	PLOT SCALE = 100.0000' / 1in.	CHECKED -	REVISED -
	PLOT DATE = 7/23/2014	DATE -	REVISED -

STATE OF ILLINOIS
DEPARTMENT OF TRANSPORTATION

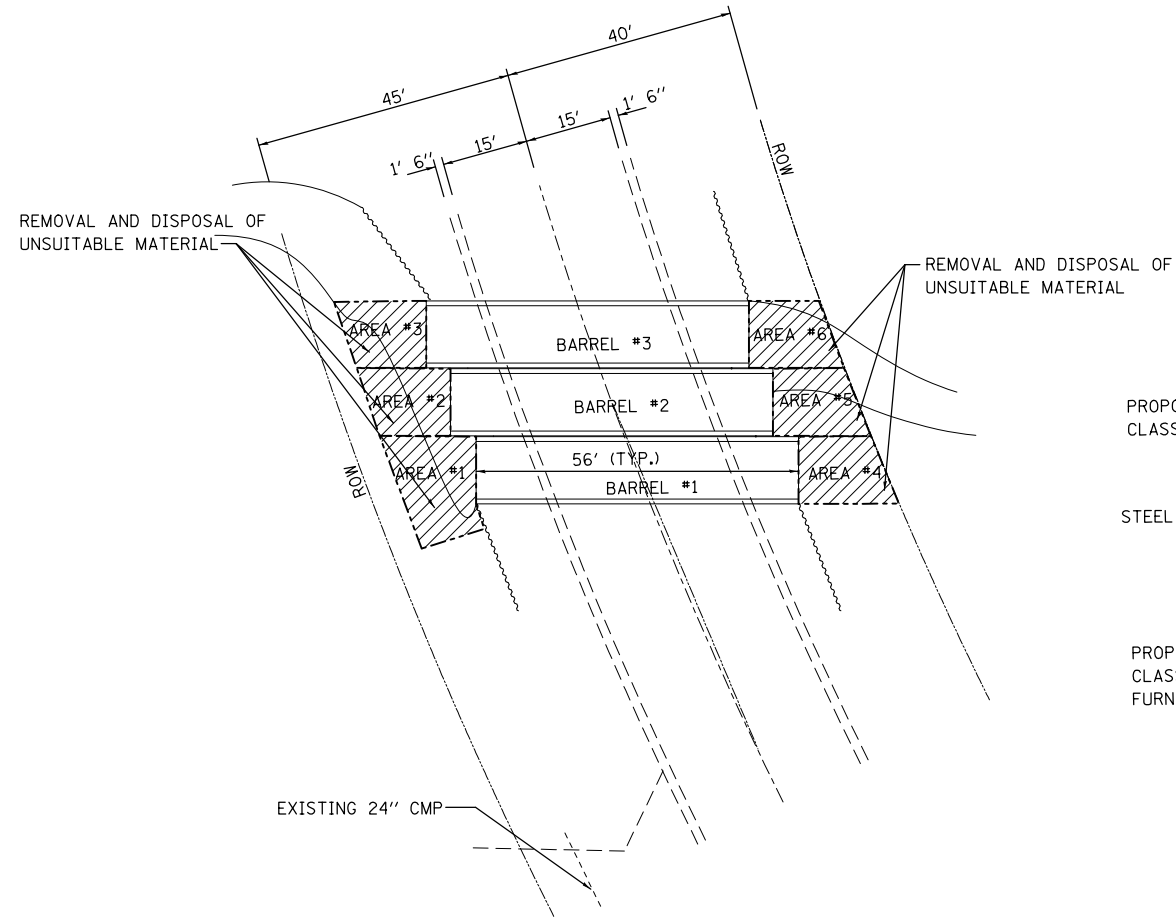
SN 042-2001 (IL 100) PLAN SHEET

SCALE: SHEET NO. OF SHEETS STA. TO STA.

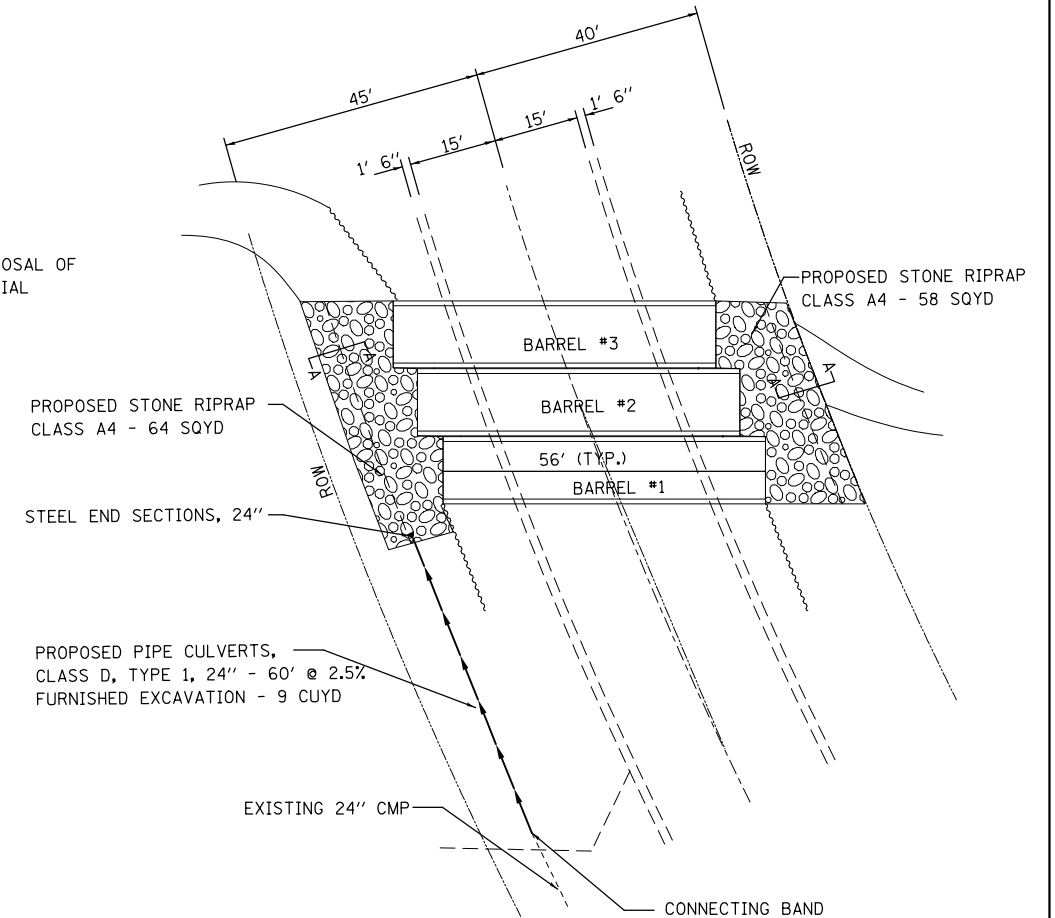
F.A. RTE.	SECTION	COUNTY	TOTAL SHEETS	SHEET NO.
•	4-Q-1/10-3BR-I	JERSEY/RANDOLPH	7	5
	• FAP 304/ FAS 1857A	CONTRACT NO. 76H29		
FED. ROAD DIST. NO.	ILLINOIS FED. AID PROJECT			



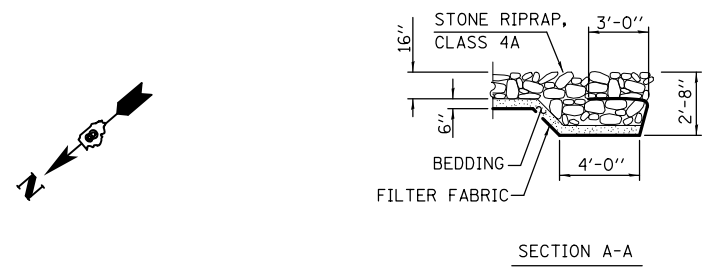
EXISTING PLAN VIEW



PROPOSED SOIL REMOVAL PLAN



PROPOSED RIPRAP/DRAINAGE PLAN



SECTION A-A

PROPOSED PIPE CULVERT

NOTE: SEEDING, NUTRIENTS AND MULCH AND CONNECTING BAND FOR THE PIPE CULVERT SHALL BE INCLUDED IN THE COST PER FOOT FOR PIPE CULVERT, CLASS D, TYPE 1, 24".

NOT TO SCALE

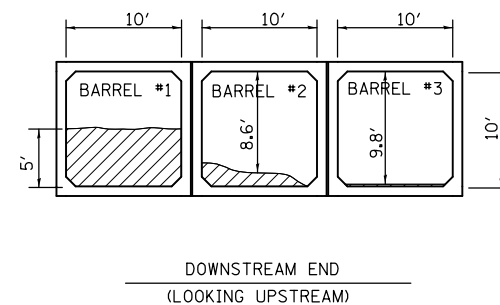
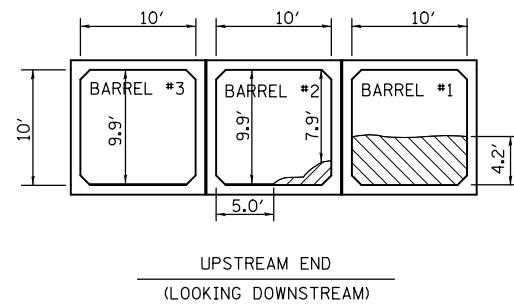
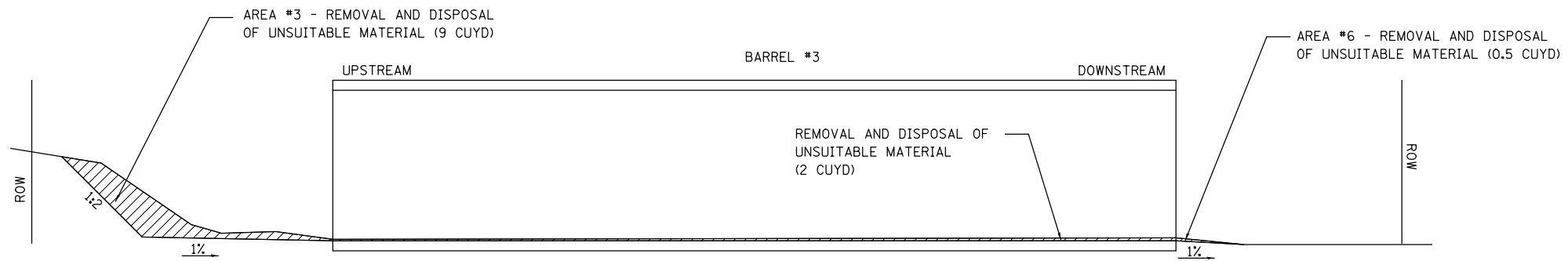
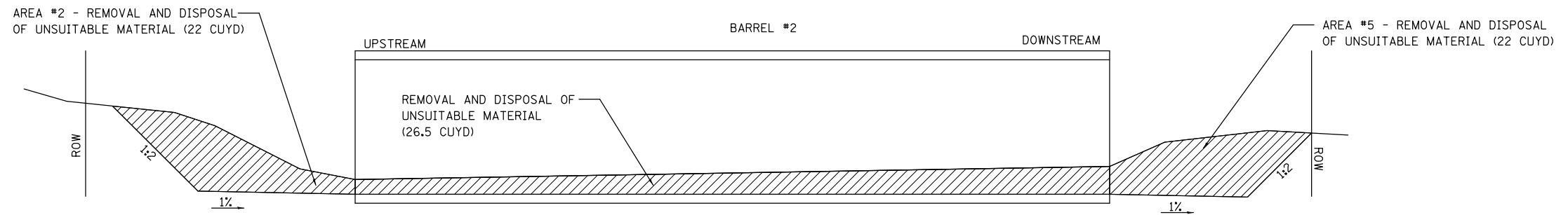
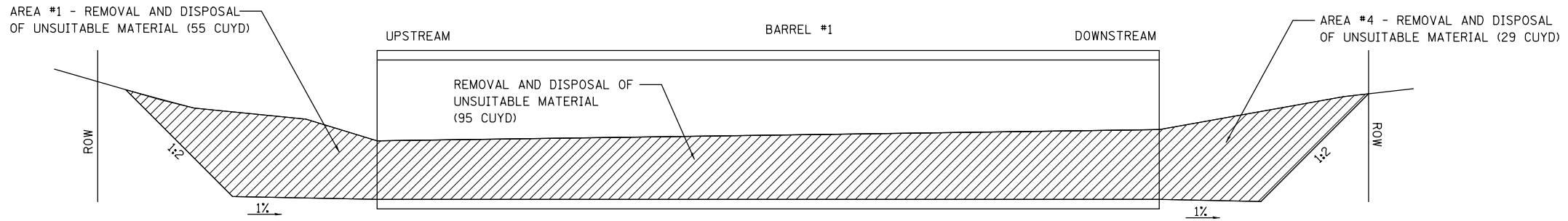
FILE NAME =	USER NAME = burnsideem	DESIGNED -	REVISED -
et:\pw\work\p1\dot\burnsideem\d0389129\Plan sheets_enga.dgn		DRAWN -	REVISED -
	PLOT SCALE = 100.0000' / 1in.	CHECKED -	REVISED -
	PLOT DATE = 7/23/2014	DATE -	REVISED -

STATE OF ILLINOIS
DEPARTMENT OF TRANSPORTATION

SN 079-2004 (BLUFF ROAD) PLAN SHEET

SCALE: SHEET NO. OF SHEETS STA. TO STA.

F.A. RTE.	SECTION	COUNTY	TOTAL SHEETS	SHEET NO.
*	4-0-I/10-3BR-I	JERSEY/RANDOLPH	7	6
* FAP 304/ FAS 1857A		CONTRACT NO. 76H29		
FED. ROAD DIST. NO.	ILLINOIS FED. AID PROJECT			



SILT TO BE REMOVED

NOT TO SCALE

FILE NAME =	USER NAME = burnsideem	DESIGNED -	REVISED -
et:\pw\work\p\dot\burnsideem\d0389129\Plan sheets_enga.dgn		DRAWN -	REVISED -
	PLOT SCALE = 100.0000' / 1in.	CHECKED -	REVISED -
	PLOT DATE = 7/23/2014	DATE -	REVISED -

STATE OF ILLINOIS
DEPARTMENT OF TRANSPORTATION

SN 079-2004 (BLUFF ROAD) PLAN SHEET

SCALE: SHEET NO. OF SHEETS STA. TO STA.

F.A. RTE.	SECTION	COUNTY	TOTAL SHEETS	SHEET NO.
*	4-Q-1/10-3BR-1	JERSEY/RANDOLPH	7	7
• FAP 304/ FAS 1857A		CONTRACT NO. 76H29		
FED. ROAD DIST. NO.		ILLINOIS FED. AID PROJECT		