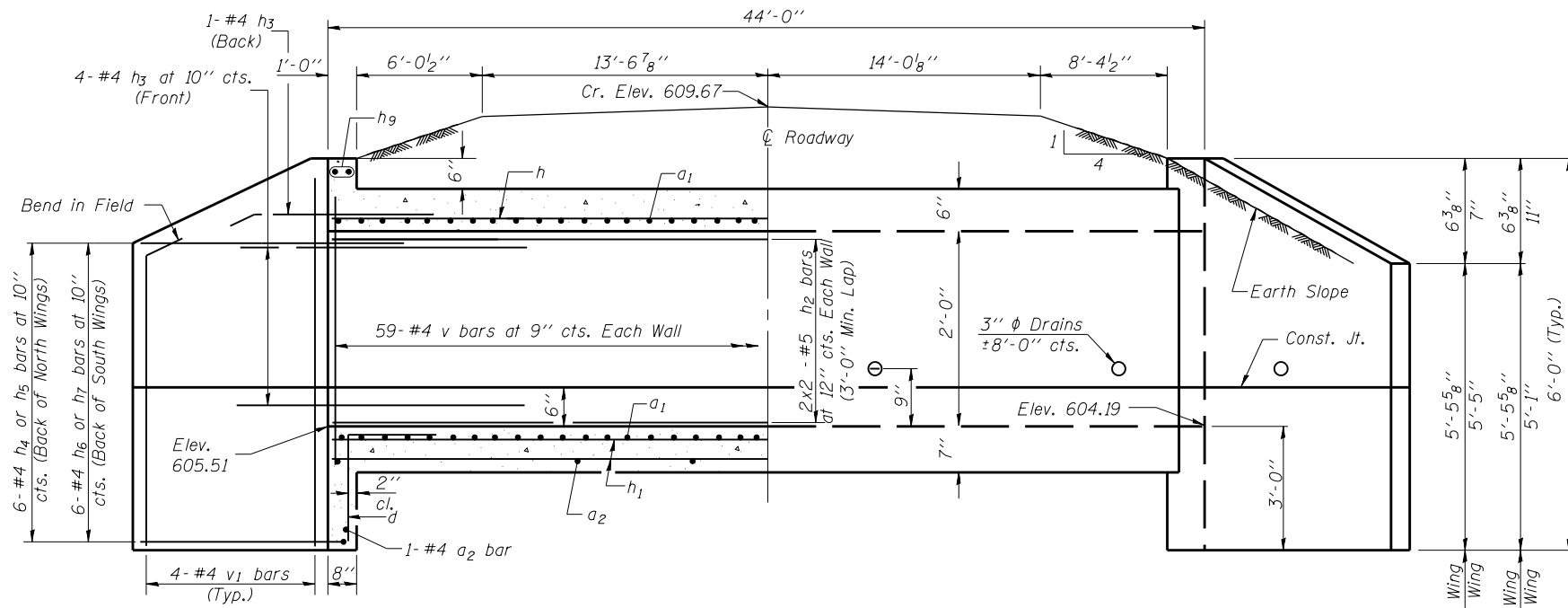
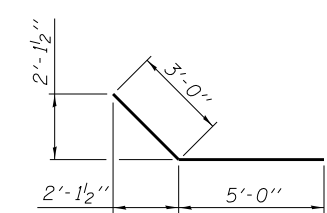


PRINT DATE: 10/16/2014 12:46:24 PM Y:\41018 IDOT BLD W034 Culvert Replacements\Drawings\Bridges\Final\PlotSheets\76789_280_6040_Details.dgn

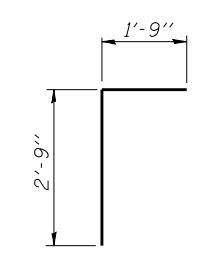


HALF LONG. SECTION

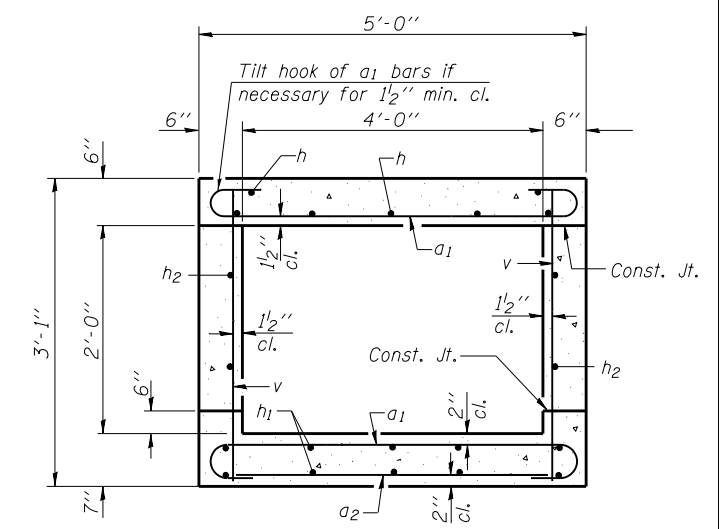
HALF ELEVATION



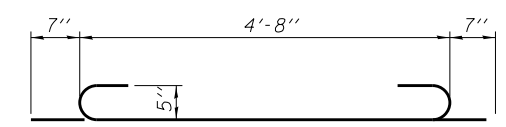
BAR h3



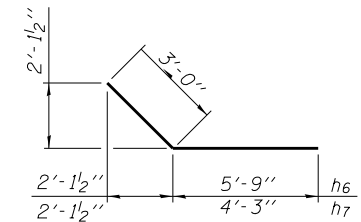
BAR d



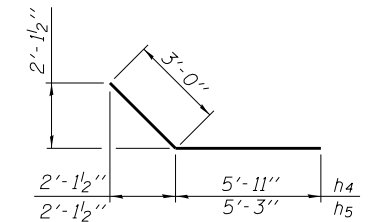
SECTION THRU BARREL



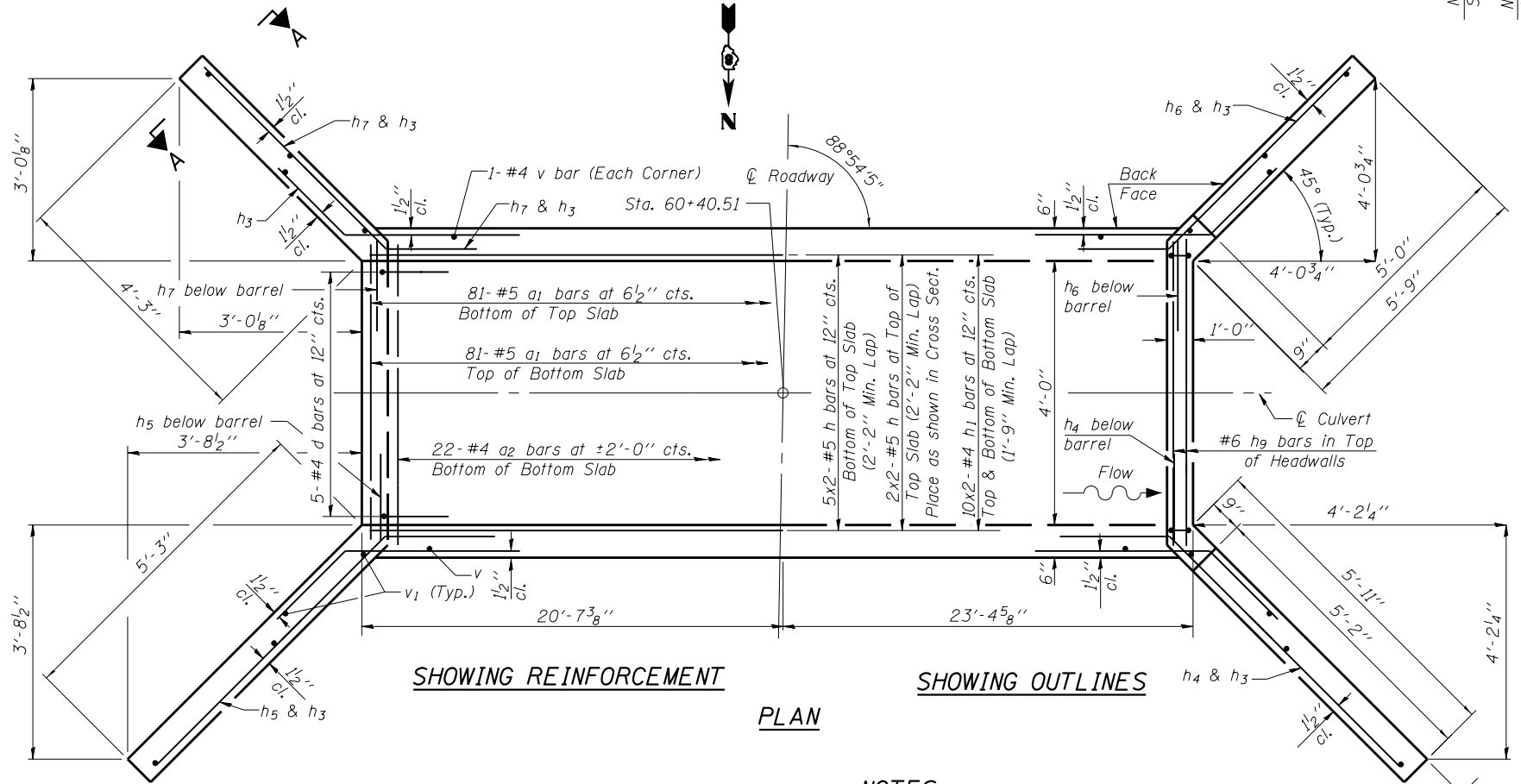
BAR a1



BARS h6 & h7



BARS h4 & h5



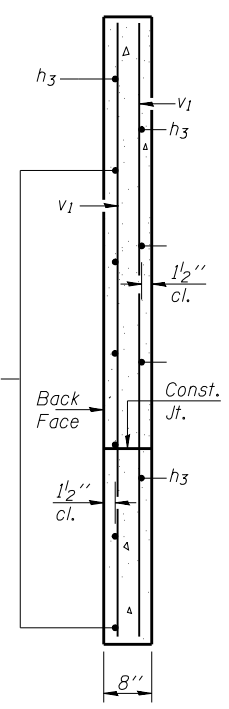
SHOWING REINFORCEMENT

SHOWING OUTLINES

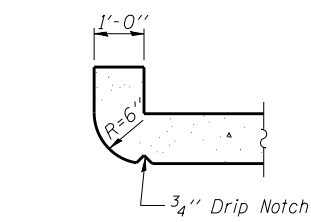
PLAN

NOTES

A distance of half the length of the wingwall but not less than six feet of the barrel shall be poured monolithically with the wingwalls.
 Bars indicated thus 12 x 4-#5 etc. indicates 12 lines of bars with 4 lengths per line.



SECTION A-A



SECTION THRU HEADWALL
(Up Stream End Only)

BILL OF MATERIAL

Bar	No.	Size	Length	Shape
a1	162	#5	5'-10"	U
a2	24	#4	4'-8"	U
d	10	#4	4'-6"	L
h	14	#5	22'-11"	—
h1	20	#4	22'-9"	—
h2	8	#5	23'-4"	—
h3	20	#4	8'-0"	—
h4	6	#4	8'-11"	—
h5	6	#4	8'-3"	—
h6	6	#4	8'-9"	—
h7	6	#4	7'-3"	—
h9	4	#6	4'-0"	—
v	120	#4	2'-9"	—
v1	16	#4	5'-8"	—
Reinforcement Bars			Pound	2,470
Concrete Box Culverts			Cu. Yd.	15.8

EFK Moen, LLC
 Civil Engineering Design
 303 Fountains Parkway, Suite 240
 Fairview Heights, IL 62208
 Phone 618-206-4250

USER NAME = cdl	DESIGNED - CMC	REVISED -
PLOT SCALE = 0.1667' / 1"	CHECKED - CTW	REVISED -
PLOT DATE = 10/16/2014	DRAWN - JAA	REVISED -
	DATE - 10/16/2014	REVISED -

STATE OF ILLINOIS
 DEPARTMENT OF TRANSPORTATION

CAST IN PLACE CULVERT DETAILS
 4'x2' BOX CULVERT - STA. 60+40.51 CEMETERY RD.

SHEET NO. 2 OF 2 SHEETS

F.A.S. RTE.	SECTION	COUNTY	TOTAL SHEETS	SHEET NO.
• 749/752	101-2RS-1	JERSEY	438	280
ILLINOIS FED. AID PROJECT			CONTRACT NO. 76789	