

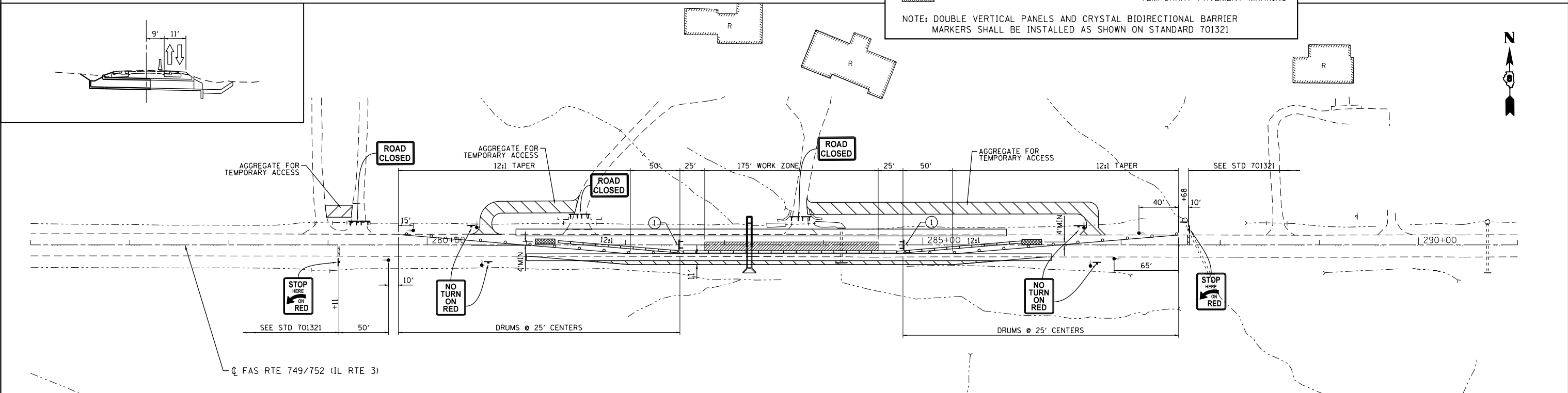
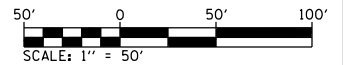
NOTES:
 CONSTRUCT PRIOR TO STAGE 1,
 HMA BASE COURSE, 9" 165.0 SQ YDS
 HMA BASE COURSE, 8" 220.0 SQ YDS
 CONSTRUCT DURING STAGE 1,
 HMA BASE COURSE, 9" 176.7 SQ YDS
 HMA BASE COURSE, 8" 401.3 SQ YDS
 TEMPORARY CONCRETE BARRIER 437.5

STAGE 1

LEGEND

	WORK AREA		TYPE III BARRICADE TO BE PLACED WHEN NO WORK IS BEING PERFORMED
	TEMPORARY CONSTRUCTION		TEMPORARY CONCRETE BARRIER
	SIGN		DRUM WITH STEADY BURNING BI-DIRECTIONAL LIGHT AND 4" TEMPORARY PAVEMENT MARKING
	TYPE III BARRICADE		
	TRAFFIC SIGNAL		
	IMPACT ATTENUATOR		

NOTE: DOUBLE VERTICAL PANELS AND CRYSTAL BIDIRECTIONAL BARRIER MARKERS SHALL BE INSTALLED AS SHOWN ON STANDARD 701321



NOTES:
 TEMPORARY CONCRETE BARRIER 37.5 FOOT
 RELOCATE TEMPORARY CONCRETE BARRIER 437.5 FOOT
 AGGREGATE FOR TEMPORARY ACCESS 216.6 TONS
 PAVEMENT REMOVAL 165.8 SQ YD

STAGE 2



FILE NAME = S:\Projects\085-022B-VH\IL_3_Cret\cm\ldgm\CADD_Sheets\08576789-sh-t-staging.dgn



USER NAME = l_jackson	DESIGNED - ACM	REVISED -
MODEL NAME = CULVERT 12	DRAWN - EDW	REVISED -
PLOT SCALE = 99.9998' / in.	CHECKED - LWJ	REVISED -
PLOT DATE = 8/22/2014	DATE - 8-11-14	REVISED -

**STATE OF ILLINOIS
 DEPARTMENT OF TRANSPORTATION**

**STAGING AND TRAFFIC CONTROL PLAN
 CULVERT # 12 - STA 283+25.00**

SCALE: 1"=50' SHEET 7 OF 17 SHEETS STA. 276+00 TO STA. 291+00

F.A.S. RTE.	SECTION	COUNTY	TOTAL SHEETS	SHEET NO.
• 749/752	101-2RS-1	JERSEY	438	97
			CONTRACT NO. 76789	
ILLINOIS FED. AID PROJECT				