

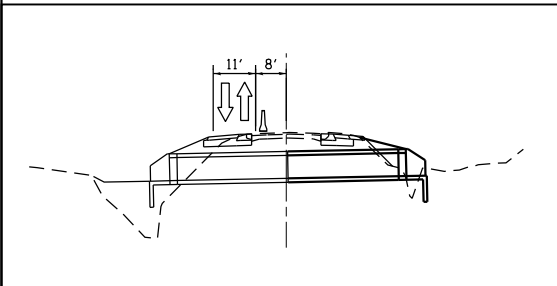
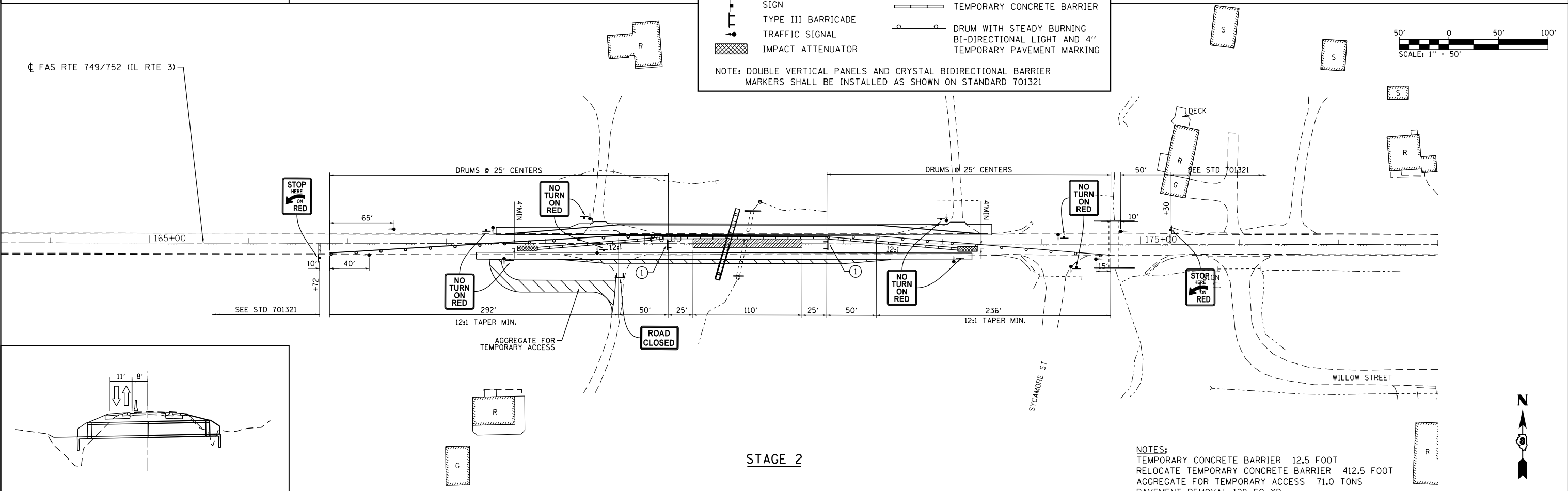
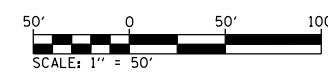
STAGE 1

LEGEND

	WORK AREA		TYPE III BARRICADE TO BE PLACED WHEN NO WORK IS BEING PERFORMED
	TEMPORARY CONSTRUCTION		TEMPORARY CONCRETE BARRIER
	SIGN		DRUM WITH STEADY BURNING BI-DIRECTIONAL LIGHT AND 4" TEMPORARY PAVEMENT MARKING
	TYPE III BARRICADE		
	TRAFFIC SIGNAL		
	IMPACT ATTENUATOR		

NOTE: DOUBLE VERTICAL PANELS AND CRYSTAL BIDIRECTIONAL MARKERS SHALL BE INSTALLED AS SHOWN ON STANDARD 701321

NOTES:
 CONSTRUCT PRIOR TO STAGE 1,
 HMA BASE COURSE, 9" 166.7 SQ YDS
 HMA BASE COURSE, 8" 350.2 SQ YDS
 CONSTRUCT DURING STAGE 1,
 HMA BASE COURSE, 9" 166.7 SQ YDS
 HMA BASE COURSE, 8" 416.4 SQ YDS
 TEMPORARY CONCRETE BARRIER 412.5 FOOT
 AGGREGATE FOR TEMPORARY ACCESS 68.0 TONS



STAGE 2

NOTES:
 TEMPORARY CONCRETE BARRIER 12.5 FOOT
 RELOCATE TEMPORARY CONCRETE BARRIER 412.5 FOOT
 AGGREGATE FOR TEMPORARY ACCESS 71.0 TONS
 PAVEMENT REMOVAL 128 SQ YD

FILE NAME = S:\Projects\809-002B-VHY_IL_3_Graf\turn\dm\CADD_Sheets\081761818-sh-t-staging.dgn



USER NAME = ljackson	DESIGNED - ACM	REVISED -
MODEL NAME = CULVERT 04	DRAWN - EDW	REVISED -
PLOT SCALE = 99.9998' / in.	CHECKED - LWJ	REVISED -
PLOT DATE = 8/22/2014	DATE - 8-11-14	REVISED -

**STATE OF ILLINOIS
 DEPARTMENT OF TRANSPORTATION**

**STAGING AND TRAFFIC CONTROL PLAN
 CULVERT # 4 - STA 170+83.60**
 SCALE: 1"=50' SHEET 2 OF 17 SHEETS STA. 164+00 TO STA. 178+00

F.A.S. RTE.	SECTION	COUNTY	TOTAL SHEETS	SHEET NO.
749/752	101-2RS-1	JERSEY	438	92
			CONTRACT NO. 76789	
ILLINOIS FED. AID PROJECT				