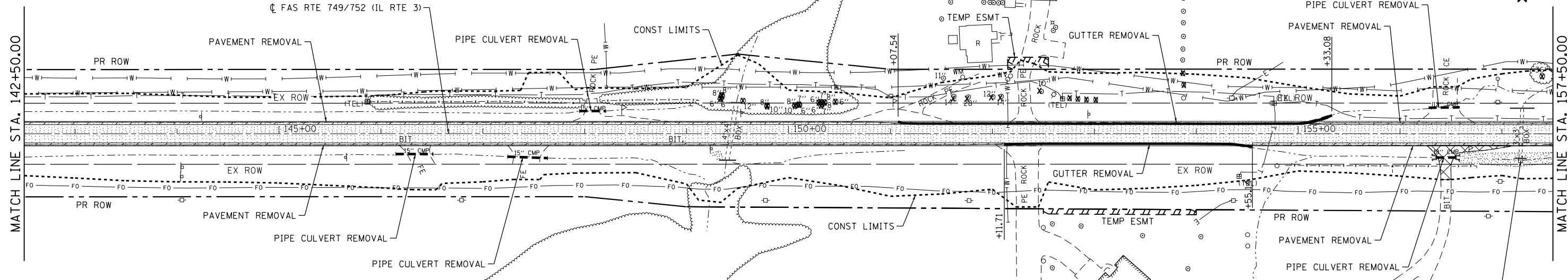


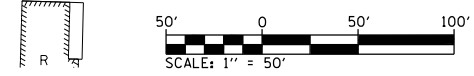
MATCH LINE STA. 142+50.00

MATCH LINE STA. 157+50.00



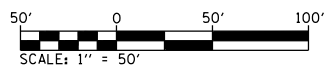
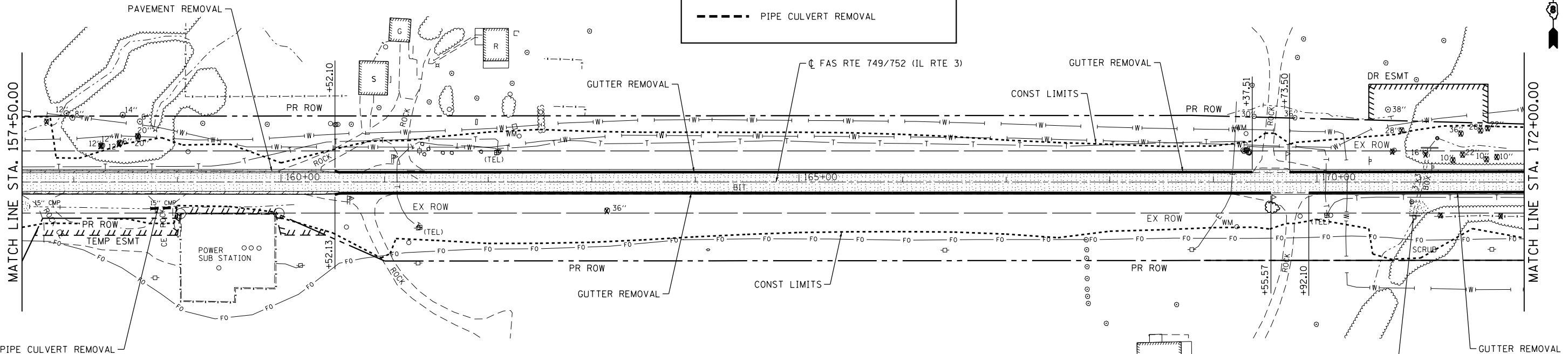
LEGEND

- HOT-MIX ASPHALT SURFACE REMOVAL - BUTT JOINT
- HOT-MIX ASPHALT SURFACE REMOVAL
- PAVEMENT REMOVAL
- REMOVAL OF O&C (EARTH EXCAVATION)
- DRIVEWAY PAVEMENT REMOVAL
- GUTTER / CURB & GUTTER REMOVAL
- TREE REMOVAL
- PIPE CULVERT REMOVAL



MATCH LINE STA. 157+50.00

MATCH LINE STA. 172+00.00



FILE NAME = S:\Projects\085-002B-VHY_IL_3_Gra\Tcm\lgm\CAD\Sheets\085752\85752-removal.dgn



USER NAME = ljackson	DESIGNED - ACM	REVISED -
MODEL NAME = REM03	DRAWN - EDW	REVISED -
PLOT SCALE = 99.9998' / in.	CHECKED - LWJ	REVISED -
PLOT DATE = 8/22/2014	DATE - 8-11-14	REVISED -

**STATE OF ILLINOIS
DEPARTMENT OF TRANSPORTATION**

REMOVALS		
FAS ROUTE 749/752 (IL RTE. 3)		
SCALE: 1"=50'	SHEET 3 OF 12 SHEETS	STA. 142+50 TO STA. 172+00

F.A.S. RTE.	SECTION	COUNTY	TOTAL SHEETS	SHEET NO.
749/752	101-2RS-1	JERSEY	438	81
CONTRACT NO. 76789			ILLINOIS FED. AID PROJECT	