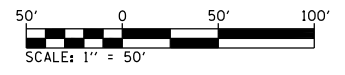
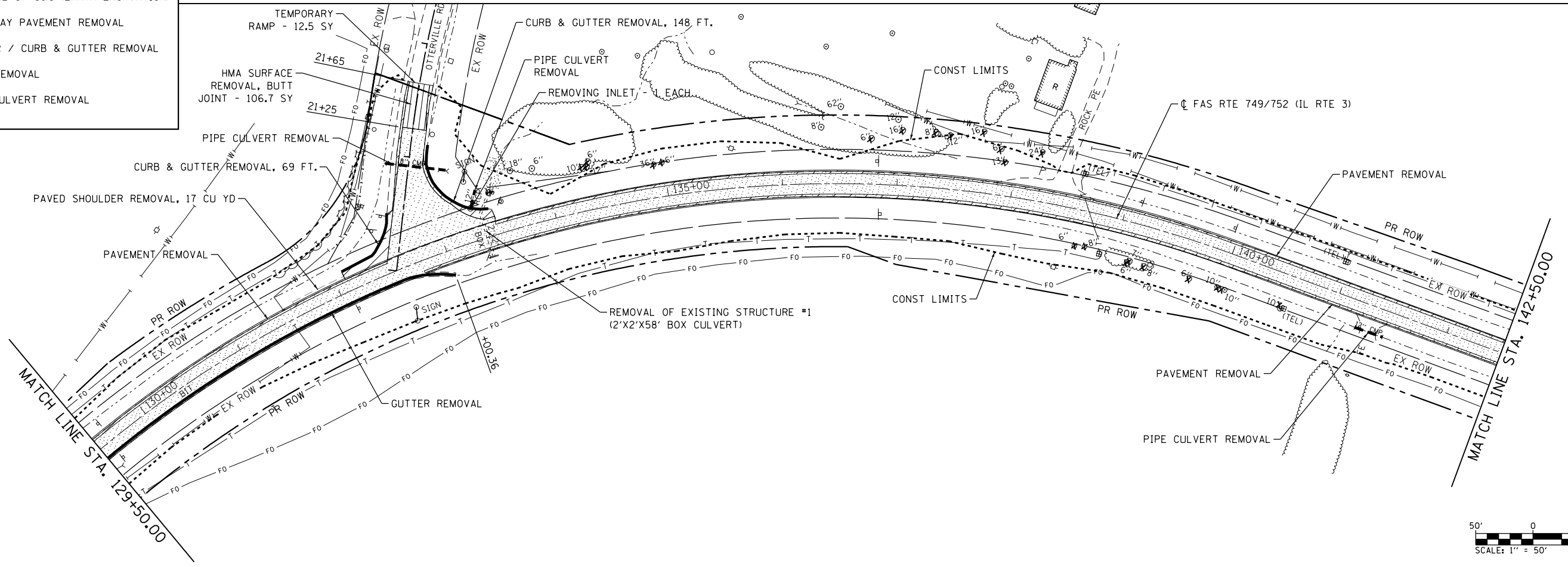


**LEGEND**

- HOT-MIX ASPHALT SURFACE REMOVAL - BUTT JOINT
- HOT-MIX ASPHALT SURFACE REMOVAL
- PAVEMENT REMOVAL
- REMOVAL OF O&C (EARTH EXCAVATION)
- DRIVEWAY PAVEMENT REMOVAL
- GUTTER / CURB & GUTTER REMOVAL
- TREE REMOVAL
- PIPE CULVERT REMOVAL



FILE NAME = S:\Projects\089-082B-WHY\_IL\_3\_Cret\asn\asn\CADD\_Sheets\089752\89752-shr-removal.dgn



USER NAME = l.jackson	DESIGNED - ACM	REVISED -
MODEL NAME = REM02	DRAWN - EDW	REVISED -
PLOT SCALE = 99.9998' / in.	CHECKED - LWJ	REVISED -
PLOT DATE = 8/22/2014	DATE - 8-11-14	REVISED -

**STATE OF ILLINOIS  
DEPARTMENT OF TRANSPORTATION**

<b>REMOVALS</b>		
<b>FAS ROUTE 749/752 (IL RTE. 3)</b>		
SCALE: 1"=50'	SHEET 2 OF 12 SHEETS	STA. 114+50 TO STA. 142+50

F.A.S. RTE.	SECTION	COUNTY	TOTAL SHEETS	SHEET NO.
749/752	101-2RS-1	JERSEY	438	80
CONTRACT NO. 76789			ILLINOIS FED. AID PROJECT	