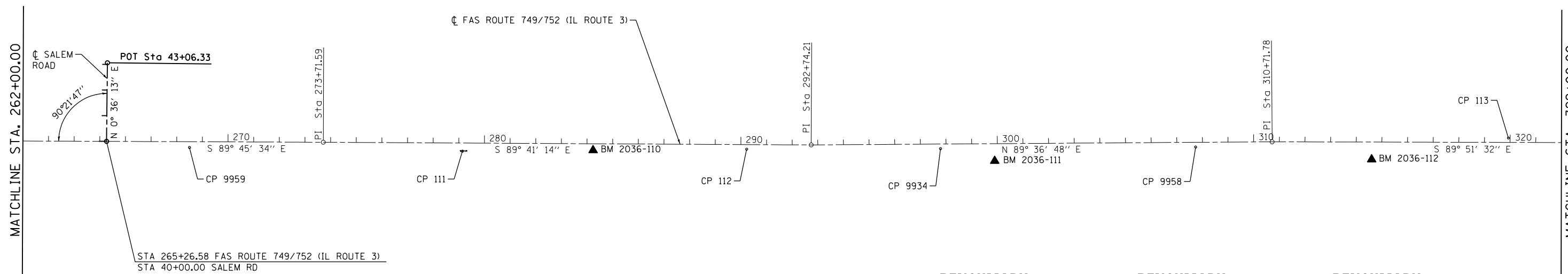




ALIGNMENT COORDINATES - SALEM ROAD			
CONTROL POINT	STATION	COORDINATES	
		NORTHING	EASTING
P.O.T	40+00.00	849628.7120	2238970.2230
P.O.T	43+06.33	849935.0250	2238973.4500

ALIGNMENT COORDINATES - IL RTE 3			
CONTROL POINT	STATION	COORDINATES	
		NORTHING	EASTING
P.I.	273+71.59	849625.1635	2239815.2214
P.I.	292+74.21	849614.7756	2241717.8049
P.I.	310+71.78	849626.9058	2243515.3379



**BENCHMARK 2036-110**

EL. 645.32

CUT "□" ON EAST END OF HEADWALL AT SOUTH SIDE OF IL. 3, ±0.49 MILES EAST OF ELSA ROAD

**BENCHMARK 2036-111**

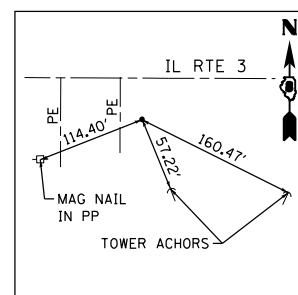
EL. 628.51

CUT "□" ON WEST END OF HEADWALL AT SOUTH SIDE OF IL. 3, ±0.70 MILES EAST OF ELSA ROAD

**BENCHMARK 2036-112**

EL. 625.48

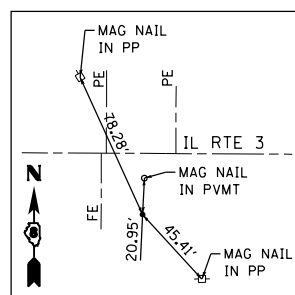
CUT "□" ON CENTER OF HEADWALL AT SOUTH SIDE OF IL. 3, ±0.95 MILES EAST OF ELSA ROAD



**CONTROL POINT #9959**

IRON PIN WITH IDOT CAP

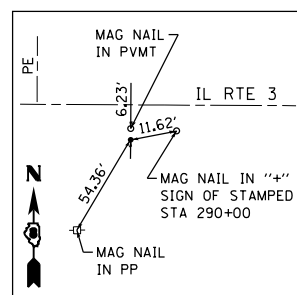
STA 268+49.93, 22.61' RT.  
N 849604.7466  
E 2239293.4648



**CONTROL POINT #111**

IRON PIN WITH IDOT CAP

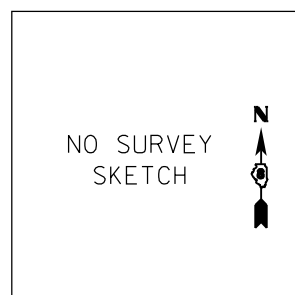
STA 279+14.07, 31.81' RT.  
N 849590.3897  
E 2240357.5210



**CONTROL POINT #112**

IRON PIN WITH IDOT CAP

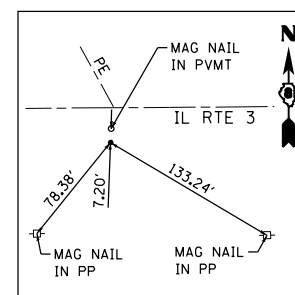
STA 290+22.83, 18.21' RT.  
N 849597.9433  
E 2241466.3341



**CONTROL POINT #A112**

IRON PIN WITH IDOT CAP

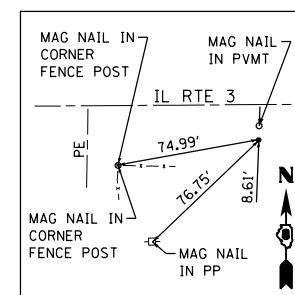
STA 290+22.84, 18.17' RT.  
N 849597.9784  
E 2241466.3408



**CONTROL POINT #9934**

IRON PIN WITH IDOT CAP

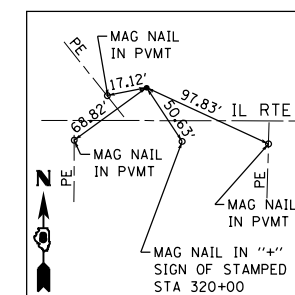
STA 297+78.51, 18.08' RT.  
N 849600.0972  
E 2242222.2245



**CONTROL POINT #9958**

IRON PIN WITH IDOT CAP

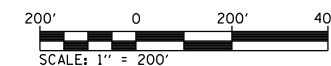
STA 307+73.32, 18.45' RT.  
N 849606.4469  
E 2243217.0108



**CONTROL POINT #113**

IRON PIN WITH IDOT CAP

STA 319+93.12, 17.11' LT.  
N 849641.7479  
E 2244436.7162



FILE NAME = S:\Projects\809-0028-VHY\_IL\_3\_Correction\Drawn\CADD\_Sheets\0876789-ht-ATB.dgn



USER NAME = ljackson	DESIGNED - ACM	REVISED -
MODEL NAME = Plan4	DRAWN - EDW	REVISED -
PLOT SCALE = 399.9992' / in.	CHECKED - LWJ	REVISED -
PLOT DATE = 8/22/2014	DATE - 8-11-14	REVISED -

**STATE OF ILLINOIS  
DEPARTMENT OF TRANSPORTATION**

**ALIGNMENTS AND TIES  
FAS ROUTE 749/752 (IL ROUTE 3)**

SCALE: 1"=200' SHEET 4 OF 6 SHEETS STA. 262+00 TO STA. 322+00

F.A.S. RTE.	SECTION	COUNTY	TOTAL SHEETS	SHEET NO.
•	101-2RS-1	JERSEY	438	51
• 749/752			<b>CONTRACT NO. 76789</b>	
ILLINOIS FED. AID PROJECT				