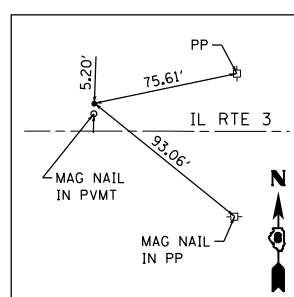
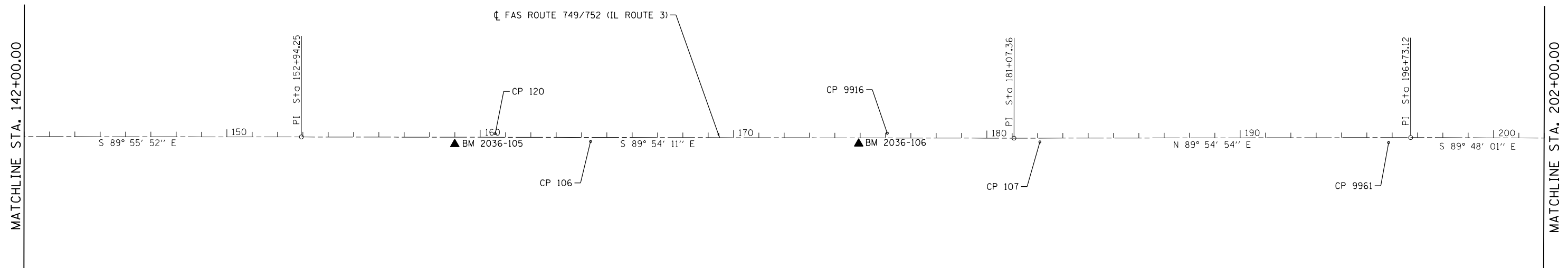
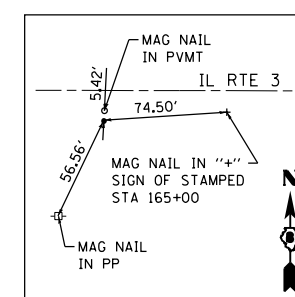




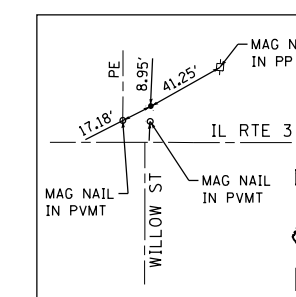
ALIGNMENT COORDINATES - IL RTE 3			
CONTROL POINT	STATION	COORDINATES	
		NORTHING	EASTING
P.I.	152+94.25	849654.1290	2227737.9327
P.I.	181+07.36	849649.3674	2230551.0334
P.I.	196+73.12	849651.6883	2232116.7938



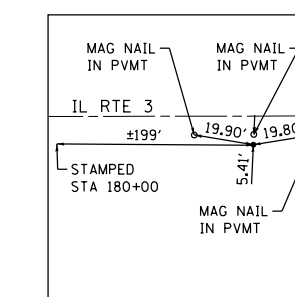
CONTROL POINT #120
 IRON PIN WITH IDOT CAP
 STA 160+59.42, 14.31' LT.
 N 849667.1457
 E 2228503.1223



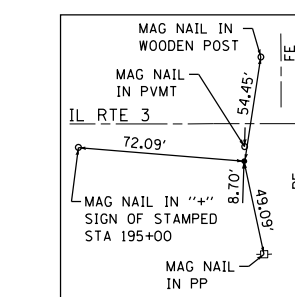
CONTROL POINT #106
 IRON PIN WITH IDOT CAP
 STA 164+36.05, 15.90' RT.
 N 849636.2922
 E 2228879.6969



CONTROL POINT #9916
 IRON PIN WITH IDOT CAP
 STA 176+07.11, 18.89' LT.
 N 849669.1031
 E 2230050.8235



CONTROL POINT #107
 IRON PIN WITH IDOT CAP
 STA 182+09.59, 14.89' RT.
 N 849634.6333
 E 2230653.2892



CONTROL POINT #9961
 IRON PIN WITH IDOT CAP
 STA 195+86.12, 19.48' RT.
 N 849632.0794
 E 2232029.8264

BENCHMARK 2036-105
 EL. 667.88
 CUT "□" ON HEADWALL AT SOUTH SIDE OF IL. 3, NORTHWEST CORNER OF POWER SUB STATION, ±0.45 MILES EAST OF OTTERTVILLE ROAD

BENCHMARK 2036-106
 EL. 623.29
 CUT "□" AT EAST END OF HEADWALL SOUTH SIDE OF IL. 3, ±0.2 MILES WEST OF 1160E, ±100' WEST OF ENTRANCE TO SPRING VALLEY ESTATES



FILE NAME = S:\Projects\809-022B-VHY_IL_3_Cref\asn\dgn\CADD_Sheets\0876789-st-ATB.dgn



USER NAME = l.jackson	DESIGNED - ACM	REVISED -
MODEL NAME = Plan2	DRAWN - EDW	REVISED -
PLOT SCALE = 399.9992' / in.	CHECKED - LWJ	REVISED -
PLOT DATE = 8/22/2014	DATE - 8-11-14	REVISED -

**STATE OF ILLINOIS
 DEPARTMENT OF TRANSPORTATION**

**ALIGNMENTS AND TIES
 FAS ROUTE 749/752 (IL ROUTE 3)**

SCALE: 1"=200' SHEET 2 OF 6 SHEETS STA. 142+00 TO STA. 202+00

F.A.S. RTE.	SECTION	COUNTY	TOTAL SHEETS	SHEET NO.
• 749/752	101-2RS-1	JERSEY	438	49
			CONTRACT NO. 76789	
ILLINOIS FED. AID PROJECT				