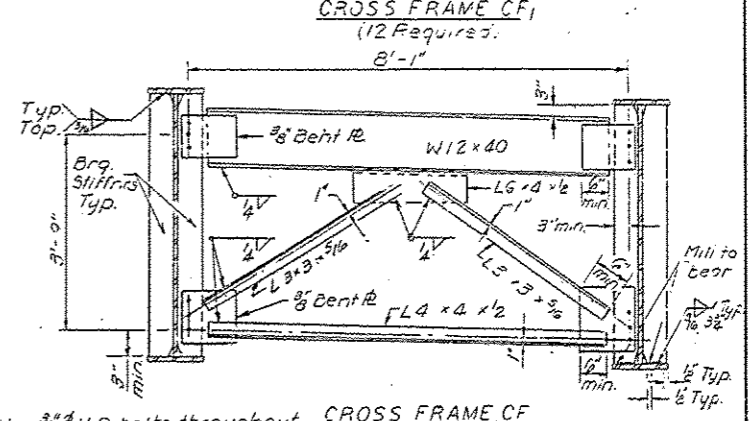
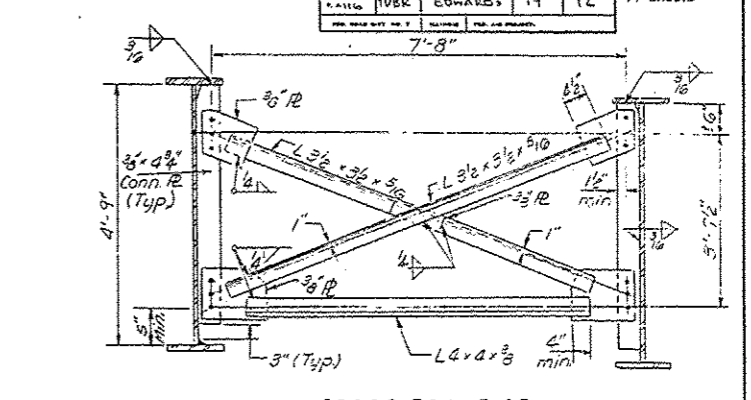
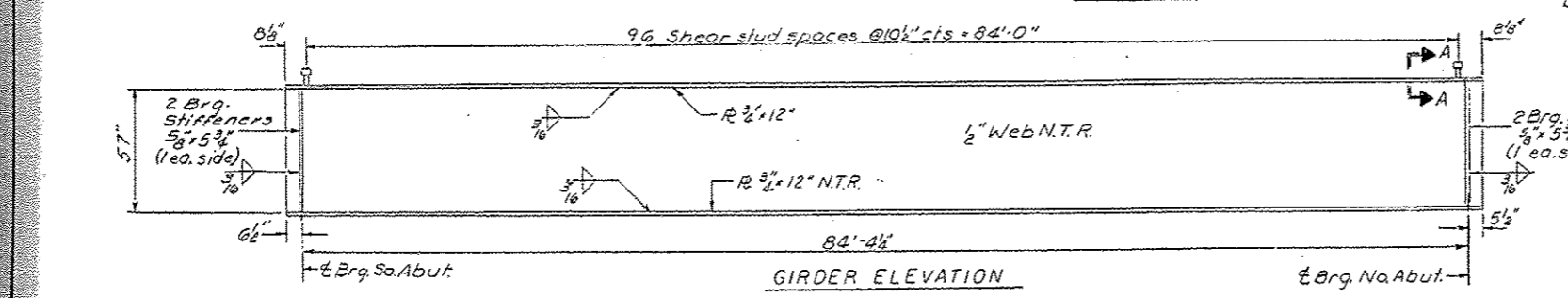
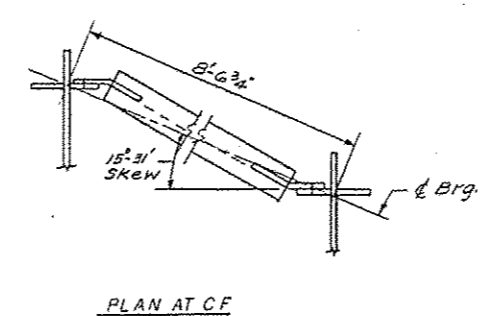
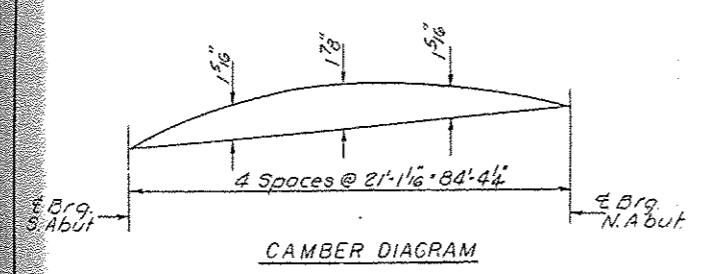
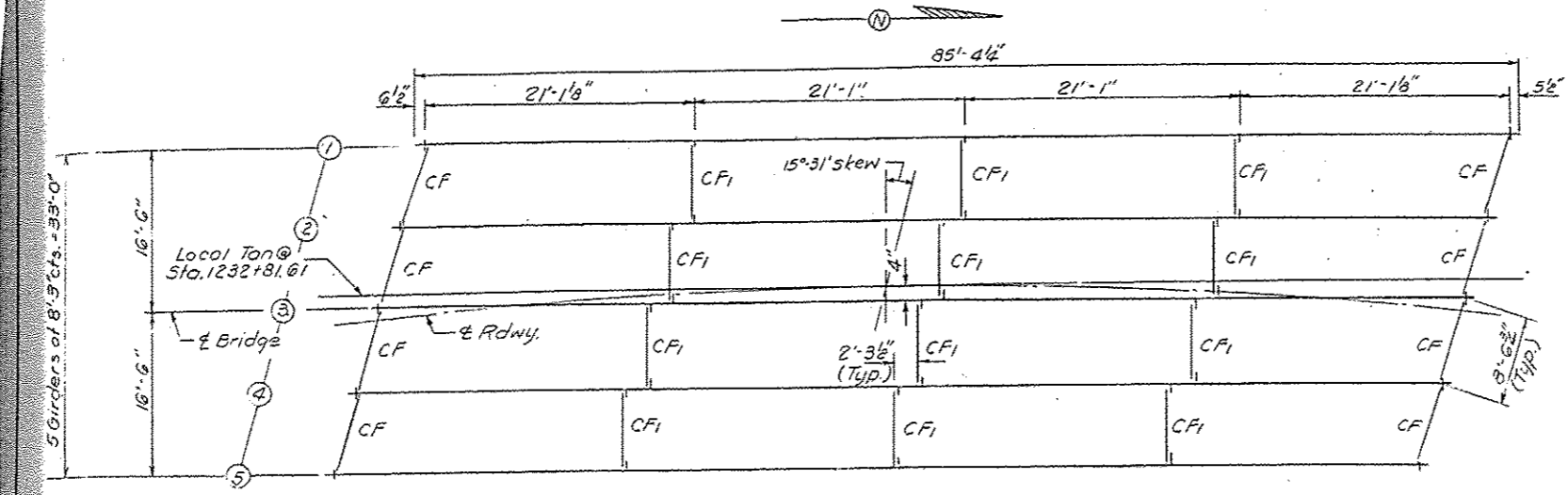


STATE OF ILLINOIS
DEPARTMENT OF TRANSPORTATION

DATE	DESIGNER	CHECKER	SCALE	SHEET NO.
11/16/10	EDWARDS	19	12	7



Use 3/4" H.S. bolts throughout with 1 1/2" holes in all plates. Two hardened washers shall be required over all holes.

INTERIOR GIRDER MOMENT TABLE

Location	5 Span
Is	22725
Ic	55772
Is	777
Sc	1114
Is	378
Is	610
Sc	370
M ₀	329
M ₁	932
M ₂	222
M ₃	1923
M ₄	4059
I _s non-composite	134
I _c comp	5.2
I _s (e+1)	20.7
I _s (overload)	37.6
I _s (Total)	48.9
VR	59.4

All Structural Steel shall be M 223-GR50 except for the Cross Frames, Connector Plates and Bearings, which shall be AASHTO M-183.

I_s and S_s are the moment of inertia and section modulus of the steel section used in computing I_s (Total and Overload). I_c and S_c are the moment of inertia and section modulus of the composite section used in computing I_s (Total and Overload). VR is the maximum impact shear range in span.

INTERIOR GIRDER REACTION TABLE

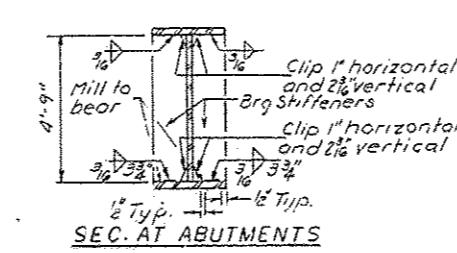
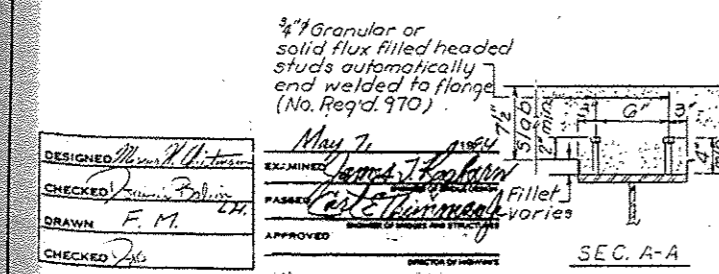
Location	Abuts
R ₂ + S ₂	56.9
R ₃	28.0
Imp	11.4
R Total	116.3

Note: N.T.R. denotes plates to which Notch Toughness Requirements are applicable.

TOP OF WEB ELEVATIONS

Location	1	2	3	4	5
E Brg. S. Abut	514.44	514.26	514.08	513.90	513.72
E Brg. N. Abut	514.63	514.44	514.24	514.05	513.86

For Fabrication purposes only.



DESIGNED: *Mark W. Heston*
CHECKED: *John J. ...*
DRAWN: *F. M.*
CHECKED: *Jab*

EXAMINED: *John J. ...*
APPROVED: *John J. ...*
DIRECTOR OF HIGHWAYS