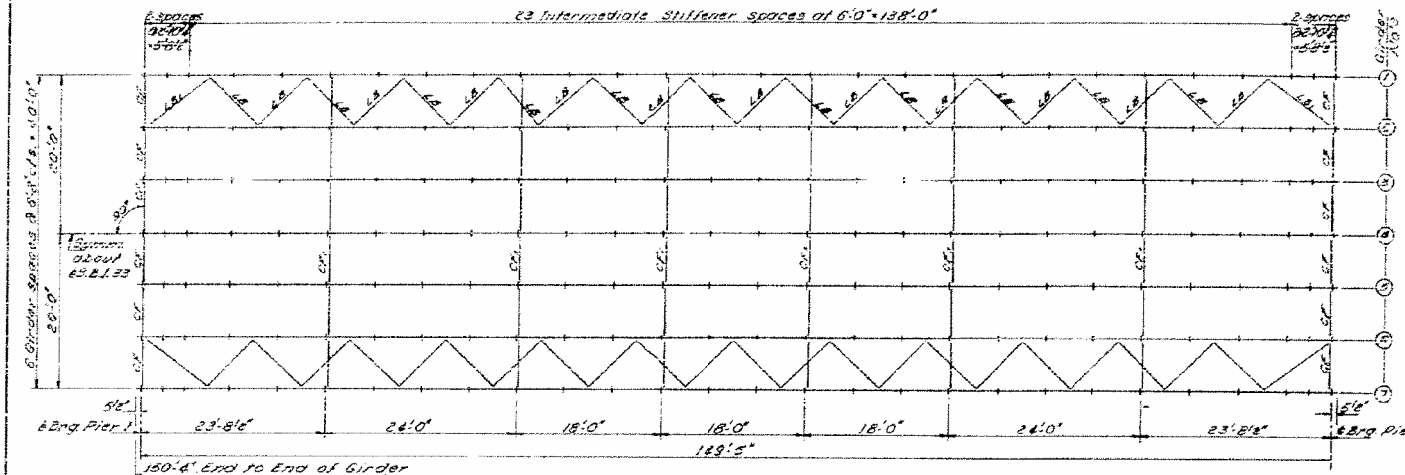
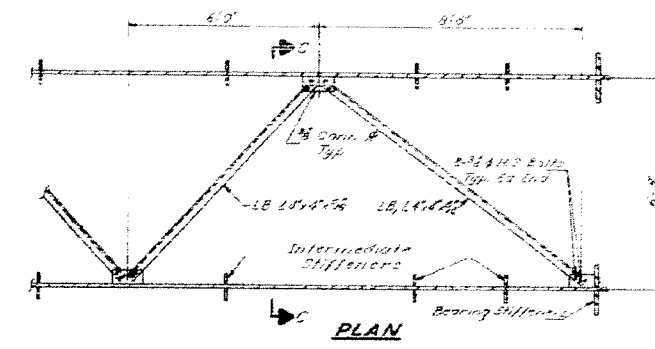


STATE OF ILLINOIS
DEPARTMENT OF PUBLIC WORKS & BUILDINGS
DIVISION OF HIGHWAYS

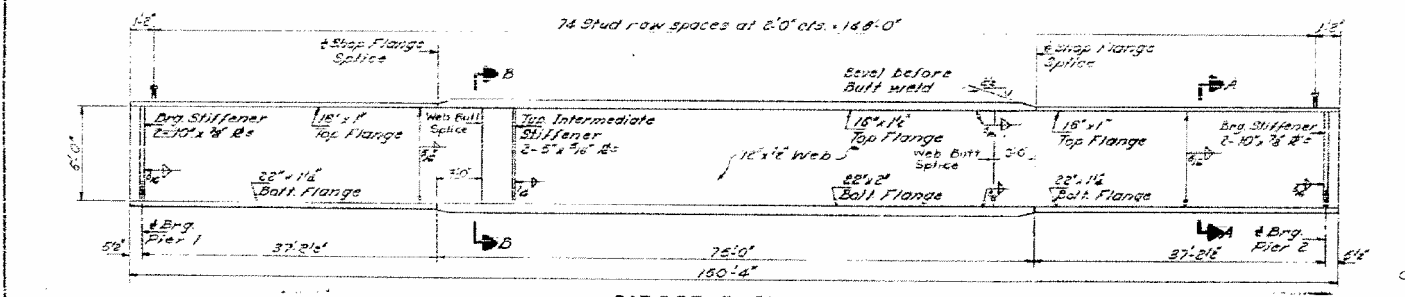
| | | | |
|-------------|-----------------|--------|-----------|
| PROJECT NO. | SECTION | DATE | SHEET NO. |
| 116 D7 | BRIDGE PAINTING | 2015-3 | 19 |



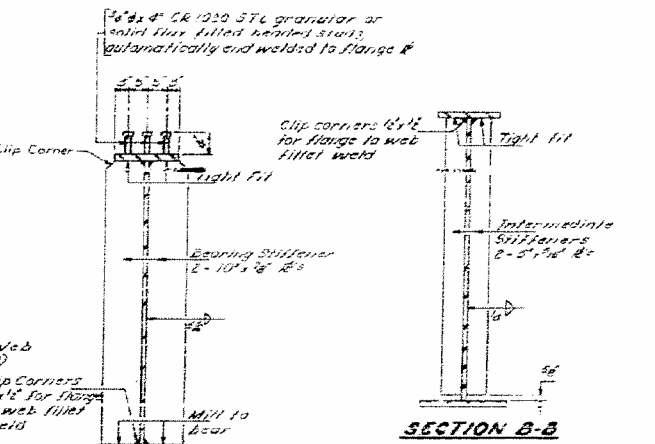
FRAMING PLAN



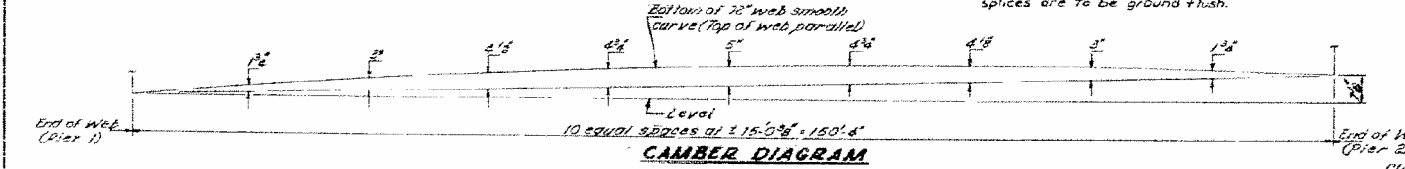
SECTION C-C
LATERAL BRACING DETAIL



GIRDER ELEVATION



SECTION A-A
FRAMING PLAN & GIRDER DETAILS



CAMBER DIAGRAM

DESIGNED: J. Kessler
CHECKED: J. Kessler
DRAWN: J. Kessler
CHECKED: J. Kessler

EXAMINED: J. Kessler
FABRICATED: J. Kessler
APPROVED: J. Kessler

DATE: Sept 26, 1960

| SECTION PROPERTIES | |
|---------------------------|-------------------------------|
| 0 to 150' 12 1/2" to 200' | Steel Section |
| 16 | 1200 In ⁴ 101889 |
| 17 | 1390 In ⁴ 11303 |
| 18 | 1575 In ⁴ 13137 |
| 19 | Composite Section |
| 20 | 140709 In ⁴ 181529 |
| 21 | 4016 In ⁴ 6776 |
| 22 | 2787 In ⁴ 3993 |

| TABLE OF MOMENTS & REACTIONS | |
|------------------------------|---------|
| DL | 4001* |
| LL | 768* |
| LL | 1501* |
| Imp | 273* |
| WIND | 5483* |
| Max Shear Range | = 53.0* |

STATE OF ILLINOIS
DEPARTMENT OF TRANSPORTATION

PLAN
STRUCTURE 040-0016

| | | | | |
|-------------|------------------------|--------|--------------------|-----------|
| F.A.P. RTE. | SECTION | COUNTY | TOTAL SHEETS | SHEET NO. |
| 116 D7 | BRIDGE PAINTING 2015-3 | | 19 | 11 |
| | | | CONTRACT NO. 74699 | |

SCALE: N/A SHEET 7 OF 13 SHEETS STA. TO STA.

VARIOUS COUNTIES

ILLINOIS FED. AID PROJECT