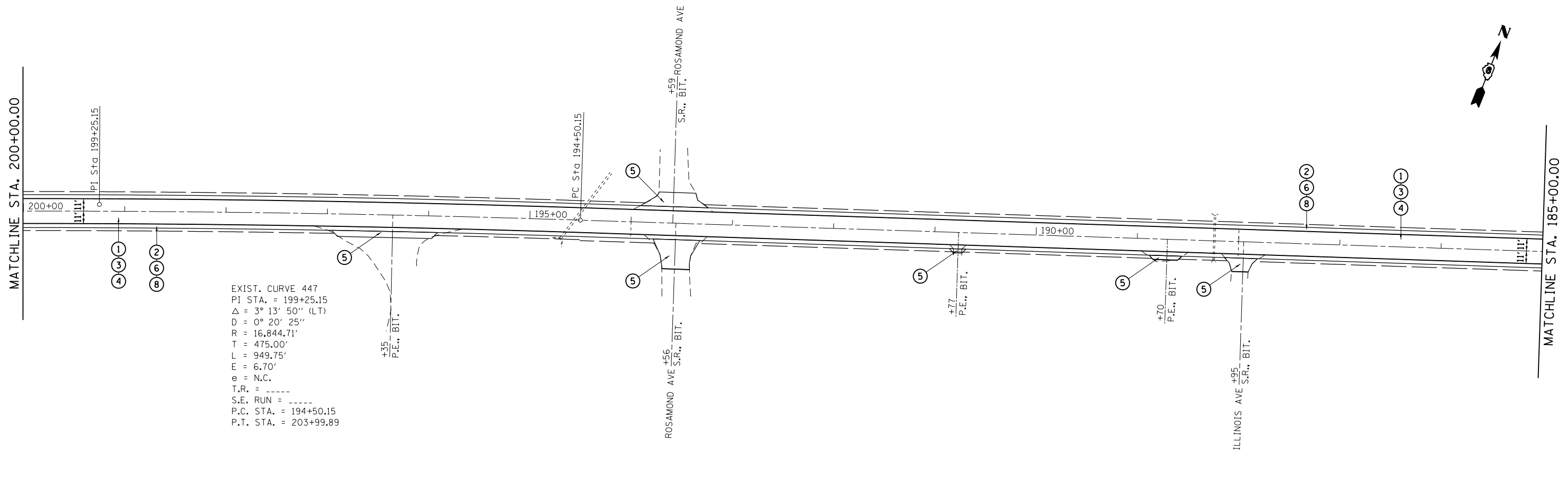
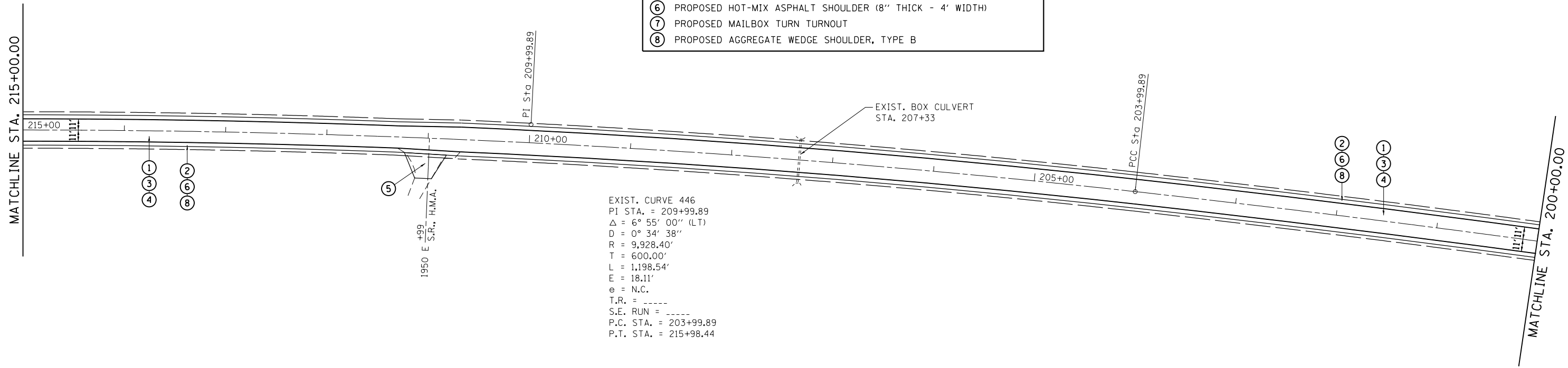


- LEGEND**
- ① PROPOSED HOT-MIX ASPHALT SURFACE REMOVAL - 1 1/2"
  - ② PROPOSED EXCAVATING AND GRADING EXISTING SHOULDER
  - ③ PROPOSED LEVELING BINDER (MACHINE METHOD) - 2 1/4"
  - ④ PROPOSED HOT-MIX ASPHALT SURFACE COURSE, IL 9.5 N50 - 1 1/2"
  - ⑤ PROPOSED INCIDENTAL HMA SURFACING
  - ⑥ PROPOSED HOT-MIX ASPHALT SHOULDER (8" THICK - 4' WIDTH)
  - ⑦ PROPOSED MAILBOX TURN TURNOUT
  - ⑧ PROPOSED AGGREGATE WEDGE SHOULDER, TYPE B



|   |                     |            |           |
|---|---------------------|------------|-----------|
| FILE NAME =   | USER NAME = pricesa | DESIGNED - | REVISED - |
| ci:\pwork\pwork\pricesa\d0239884\067204-sht-50pin.dgn |                     | DRAWN -    | REVISED - |
| PLOT SCALE = 100.0000' / in.                          |                     | CHECKED -  | REVISED - |
| PLOT DATE = Aug-14-2014 03:08:37PM                    |                     | DATE -     | REVISED - |

**STATE OF ILLINOIS  
DEPARTMENT OF TRANSPORTATION**

**IL 16 PLAN SHEETS**

|        |       |    |        |      |    |      |
|--------|-------|----|--------|------|----|------|
| SCALE: | SHEET | OF | SHEETS | STA. | TO | STA. |
|--------|-------|----|--------|------|----|------|

|                    |         |           |                           |           |
|--------------------|---------|-----------|---------------------------|-----------|
| F.A.P. RTE.        | SECTION | COUNTY    | TOTAL SHEETS              | SHEET NO. |
| 325                | .       | CHRISTIAN | 28                        | 17        |
| CONTRACT NO. 72E04 |         |           | ILLINOIS FED. AID PROJECT |           |