

STATE OF ILLINOIS
DEPARTMENT OF TRANSPORTATION
DIVISION OF HIGHWAYS

**PROPOSED
HIGHWAY PLANS**

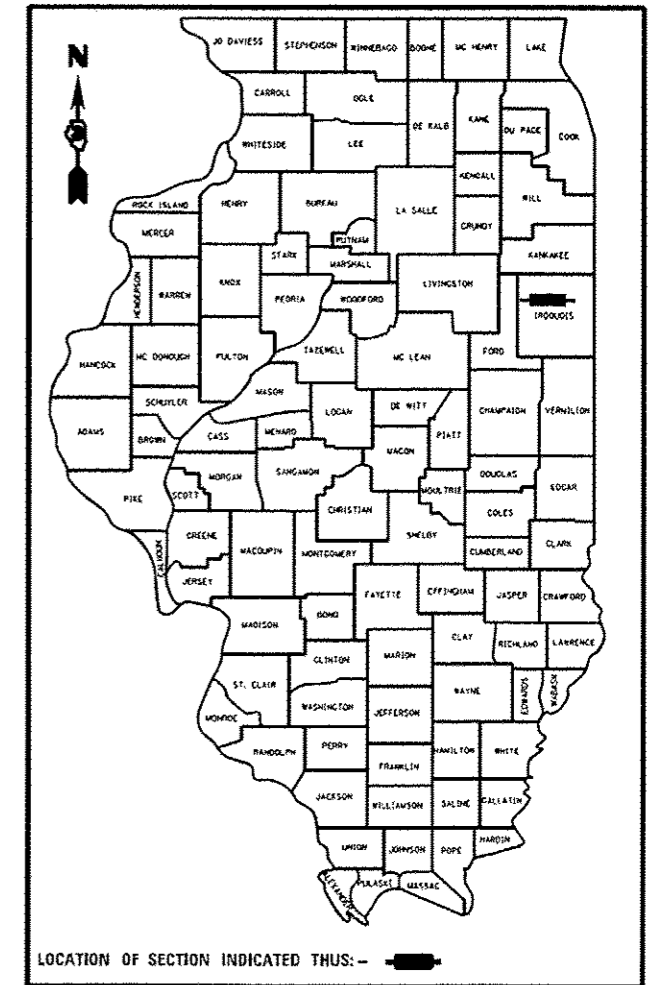
F.A.P. ROUTE 840 (IL 49)
SECTION 137-BR
PROJECT : ACF-0840(068)
BRIDGE REPLACEMENT (S.N. 038-0119)
IROQUOIS COUNTY

F.A.P. RTE.	SECTION	COUNTY	TOTAL SHEETS	SHEET NO.
840	137-BR	IROQUOIS	24	1
ILLINOIS CONTRACT NO. 66B92				

INDEX

1	COVER SHEET
2	GENERAL NOTES & STANDARDS
3-7	SUMMARY OF QUANTITIES
8	TYPICAL SECTIONS
9	ALIGNMENT SHEET
10	RIGHT OF WAY PLAN
11	SCHEDULE OF QUANTITIES
12	PLAN & PROFILE
13	DETOUR PLAN
14-17	CULVERT AND WINGWALL PLANS
18	BORING LOG SHEET
19-20	CADD DETAILS
21-24	CROSS-SECTION SHEETS

D-93-018-13



FUNCTIONAL CLASSIFICATION
RURAL MINOR ARTERIAL
(CLASS II TRUCK ROUTE)

2013 ADT = 1750
P.V. = 92.7% S.U. = 2.4% M.U. = 4.9%

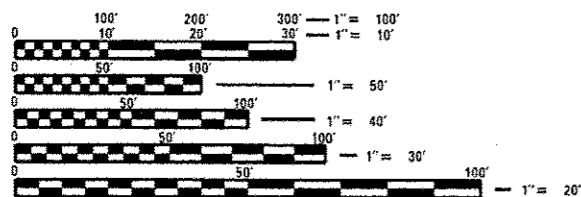
STATION 1224 + 00
S.N. 038-2026 (PR.)/038-0119 (EX.)
30'-0" LONG DOUBLE 12' X 10' CULVERT
CARRYING IL 49 OVER DITCH
(STRUCTURE REPLACEMENT)

C-93-017-13

BEGIN PROJECT
STATION 1222 + 00

DITCH, 0.5 MILES NORTH OF US 24

END PROJECT
STATION 1226 + 00

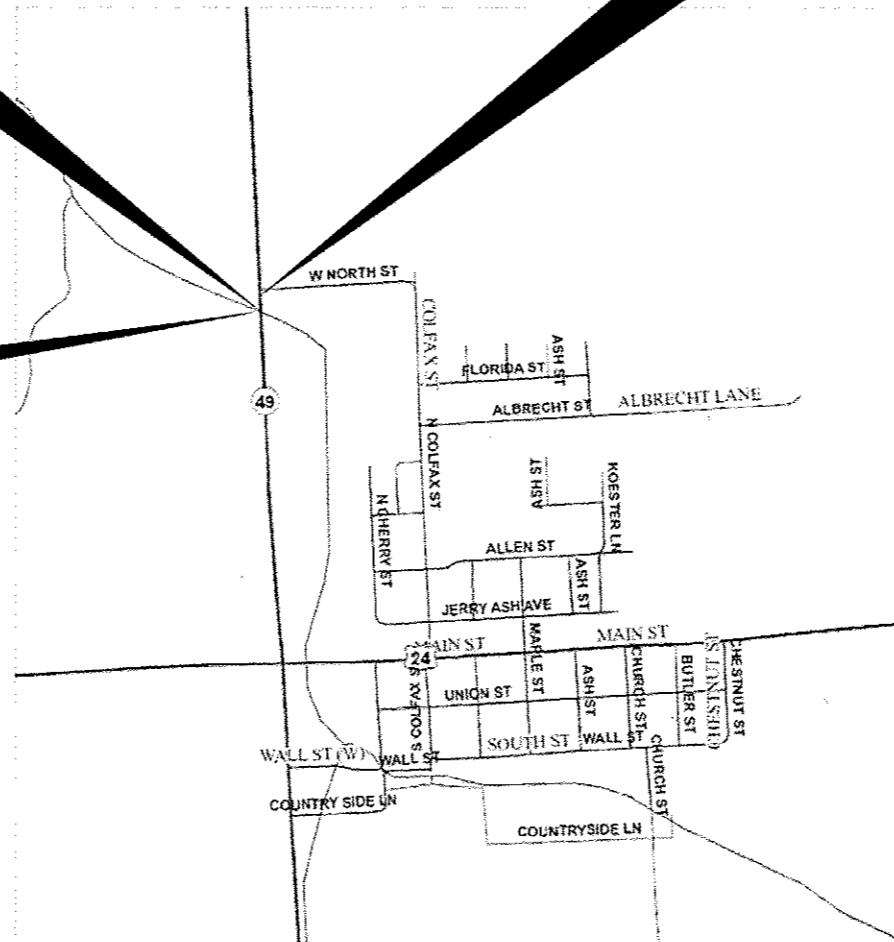


FULL SIZE PLANS HAVE BEEN PREPARED USING STANDARD ENGINEERING SCALES. REDUCED SIZED PLANS WILL NOT CONFORM TO STANDARD SCALES. IN MAKING MEASUREMENTS ON REDUCED PLANS, THE ABOVE SCALES MAY BE USED.

J.U.L.I.E.
JOINT UTILITY LOCATION INFORMATION FOR EXCAVATION
1-800-892-0123
OR 811

PROJECT ENGINEER: JOE KANNEL, P.E.
UNIT CHIEF: SCOTT FERGUSON, P.E.

CONTRACT NO. 66B92



GROSS LENGTH = 400 FT. = 0.76
NET LENGTH = 400 FT. = 0.76

STATE OF ILLINOIS
DEPARTMENT OF TRANSPORTATION
DIVISION OF HIGHWAYS

SUBMITTED August 15 2014
Paul Costello
DEPUTY DIRECTOR OF HIGHWAYS, REGION ENGINEER

Oct 17 2014
John D. Baranzoli, P.E.
ENGINEER OF DESIGN AND ENVIRONMENT

Oct 17 2014
Omer Osman, P.E.
DIRECTOR OF HIGHWAYS, CHIEF ENGINEER

PRINTED BY THE AUTHORITY
OF THE STATE OF ILLINOIS

GENERAL NOTES

THE THICKNESS OF HMA SHOWN ON THE PLANS IS THE NOMINAL THICKNESS. DEVIATIONS FROM THE NOMINAL THICKNESS WILL BE PERMITTED WHEN SUCH DEVIATIONS OCCUR DUE TO IRREGULARITIES IN THE EXISTING SURFACE OR BASE ON WHICH THE HMA IS PLACED.

EXCEPT AS NOTED ON THE PLANS, PAVEMENT GRADES SHOWN ARE AT THE TOP OF PAVEMENT SURFACES.

THE ENGINEER WILL BE THE SOLE JUDGE CONCERNING CURING TIME FOR THE VARIOUS HMA LIFTS.

FOR STABILIZATION, ALL TYPE III BARRICADES WILL REQUIRE A MINIMUM OF FOUR SAND BAGS PER BARRICADE.

SEEDING WILL NOT BE PERMITTED AT ANY TIME WHEN THE GROUND IS FROZEN, WET, OR IN AN UNTILLABLE CONDITION. LOCATIONS TO BE SEEDED WILL BE DETERMINED BY THE ENGINEER.

THE FINISHED EARTHWORK SHALL HAVE A VEGETATION SUSTAINING SOIL COVERING THE TOP FOUR INCHES (100 MILLIMETERS) IN AREAS TO BE SEEDED OR SODDED. THE VEGETATION SUSTAINING SOIL REQUIRED WILL NOT BE PAID FOR SEPARATELY BUT WILL BE INCLUDED IN THE COST OF SEEDING, CLASS 2A

SHORT TERM PAVEMENT MARKING SHALL BE USED TO OUTLINE EXIT AND ENTRANCE RAMPS FOR THE PRIME COAT APPLICATION AND EACH RESURFACING LIFT.

ALL ELEVATIONS REFERRING TO U.S.G.S. MEAN SEA LEVEL DATUM.

ABANDONED UNDERGROUND UTILITIES THAT CONFLICT WITH CONSTRUCTION SHALL BE DISPOSED OF OUTSIDE THE LIMITS OF THE RIGHT OF WAY ACCORDING TO ARTICLE 202.03 OF THE STANDARD SPECIFICATIONS AND AS DIRECTED BY THE ENGINEER. THIS WORK WILL NOT BE PAID FOR SEPARATELY, BUT WILL BE INCLUDED IN THE COST OF EARTH EXCAVATION.

ANY REFERENCE TO A STANDARD IN THESE PLANS SHALL BE INTERPRETED TO MEAN THE EDITION AS INDICATED BY THE SUBNUMBER SHOWN IN THE LIST OF STANDARDS OR THE COPY INCLUDED IN THESE PLANS.

THE FOLLOWING RATES OF APPLICATION HAVE BEEN USED IN CALCULATING PLAN QUANTITIES:

GRANULAR MATERIALS	2.05	TONS / CU YD
HMA RESURFACING	112	LBS / SQ YD / IN
SHORT TERM PAVEMENT MARKING	10	FT /100 FT OF APPLICATION
MIX FOR CRACKS, JTS & FLGWYS	0.0003	TONS / SQ YD
LEVEL BINDER (HAND METHOD)	0.0005	TONS / SQ YD

COMMITMENTS

THE TEMPORARY STEEL BEAMS UNDER THE EXISTING CONCRETE BEAMS SHALL BE SALVAGED AND DELIVERED TO A DISTRICT 3 MAINTENANCE YARD. CONTACT MR. KIP RUTLEDGE OF WATSEKA MAINTENANCE YARD (815) 432-2350 FOR ADDITIONAL INFORMATION OR TO SET UP A DELIVERARY DATE. THE COST OF REMOVING THE BEAMS AND DELIVERING THEM TO THE MAINTENANCE YARD SHALL BE INCLUDED IN THE COST OF REMOVAL OF EXISTING STRUCTURES.

Revision No.

Revision No.	Description
00	000001 STANDARD SYMBOLS, ABBREVIATIONS AND PATTERNS
02	001001 AREAS OF REINFORCEMENT BARS
	001006 DECIMAL OF AN INCH AND OF A FOOT
07	280001 TEMPORARY EROSION CONTROL SYSTEMS
02	482001 HMA SHOULDER ADJACENT TO FLEXIBLE PAVEMENT
03	482011 HMA SHOULDER STRIPS/SHOULDERS WITH RS OR WIDENING & RS PROJECT
03	515001 NAME PLATE FOR BRIDGES
04	542001 CONCRETE END SECTIONS FOR PIPE CULVERTS 15" THRU 84" DIA.
03	542301 PRECAST REINFORCED CONCRETE FLARED END SECTION
01	542401 METAL END SECTIONS FOR PIPE CULVERTS
05	609006 BRIDGE APPROACH PAVEMENT (DRAIN DETAIL)
10	630001 STEEL PLATE BEAM GUARDRAIL
09	630101 GUARDRAIL MOUNTED ON EXISTING CULVERTS
06	630201 PCC/HMA STABILIZATION AT STEEL PLATE BEAM GUARDRAIL
06	630301 SHOULDER WIDENING FOR TYPE 1 (SPECIAL) GUARDRAIL TERMINALS
01	635001 DELINEATORS
03	635006 REFLECTOR AND TERMINAL MARKER PLACEMENT
02	635011 REFLECTOR MARKER AND MOUNTING DETAILS
02	701001 OFF-RD OPERATIONS, 2L, 2W, MORE THAN 15' (4.5M) AWAY
05	701006 OFF-RD OPERATIONS, 2L, 2W, 15' (4.5M) TO 24" (600 MM) FROM PAVEMENT EDGE
03	701306 LANE CLOSURE, 2L, 2W, SLOW MOVING OPERATIONS DAY ONLY, FOR SPEEDS > 45 MPH
03	701311 LANE CLOSURE, 2L, 2W, MOVING OPERATIONS - DAY ONLY
03	701901 TRAFFIC CONTROL DEVICES
01	720011 METAL POSTS FOR SIGNS, MARKERS & DELINEATORS
04	780001 TYPICAL PAVEMENT MARKINGS
03	781001 TYPICAL APPLICATIONS RAISED REFLECTIVE PAVEMENT MARKERS

HIGHWAY STANDARDS

STATE OF ILLINOIS
DEPARTMENT OF TRANSPORTATION
DISTRICT THREE

PREPARED BY: Tom Brunk
DISTRICT STUDIES & PLANS ENGINEER

DATE: August 15, 2014

EXAMINED BY: [Signature]
DISTRICT CONSTRUCTION ENGINEER

[Signature]
DISTRICT MATERIALS ENGINEER

[Signature]
DISTRICT OPERATIONS ENGINEER

FILE NAME *	USER NAME * mcfaddenka	DESIGNED -	REVISED -	STATE OF ILLINOIS DEPARTMENT OF TRANSPORTATION	GENERAL NOTES	F.A.P. RTE.	SECTION	COUNTY	TOTAL SHEETS	SHEET NO.	
c:\pwwork\pvidot\mcfaddenka\d0288918\	066892-shr-cover.dgn	DRAWN -	REVISED -			840	137-BR	IROQUOIS	24	2	
	PLOT SCALE * 100.0000 "/ in.	CHECKED -	REVISED -			CONTRACT NO. 66892					
	PLOT DATE * 8/12/2014	DATE -	REVISED -			SCALE:	SHEET NO. OF SHEETS	STA.	TO STA.	[ILLINOIS] FED. AID PROJECT	

SUMMARY OF QUANTITIES					
CODE NO	ITEM	UNIT	CONSTRUCTION TYPE CODE		
			TOTAL QUANTITY	RDWY 0004 RURAL	038-0119 (EX.) 038-2026 (PR.) BRIDGE 0011 RURAL
20200100	EARTH EXCAVATION	CU YD	278	278	
20400800	FURNISHED EXCAVATION	CU YD	309	309	
20700110	POROUS GRANULAR EMBANKMENT	TON	855		855
25000210	SEEDING, CLASS 2A	ACRE	0.42	0.42	
25000400	NITROGEN FERTILIZER NUTRIENT	POUND	37	37	
25000500	PHOSPHORUS FERTILIZER NUTRIENT	POUND	37	37	
25000600	POTASSIUM FERTILIZER NUTRIENT	POUND	37	37	
25100115	MULCH, METHOD 2	ACRE	0.42	0.42	
28000250	TEMPORARY EROSION CONTROL SEEDING	POUND	166	166	
28000305	TEMPORARY DITCH CHECKS	FOOT	134	134	
28000500	INLET AND PIPE PROTECTION	EACH	4	4	
28100107	STONE RIPRAP, CLASS A4	50 YD	246		246
28200200	FILTER FABRIC	50 YD	246		246
31100910	SUBBASE GRANULAR MATERIAL, TYPE A 12"	50 YD	267	267	

14

FILE NAME *	USER NAME * mcfaddenka	DESIGNED -	REVISED -	STATE OF ILLINOIS DEPARTMENT OF TRANSPORTATION	SUMMARY OF QUANTITIES	F.A.P. RTE.	SECTION	COUNTY	TOTAL SHEETS	SHEET NO.	
c:\pwwork\pwwork\mcfaddenka\08288910	66892-akt-schedule.dgn	DRAWN -	REVISED -			840	137-BR	IRROUOIS	24	3	
PLOT SCALE * 1/8" = 100.0000'		CHECKED -	REVISED -			CONTRACT NO. 66892					
PLOT DATE * 8/13/2014		DATE -	REVISED -			SCALE:	SHEET NO. OF SHEETS	STA.	TO STA.	ILLINOIS FED. AID PROJECT	

SUMMARY OF QUANTITIES					
CODE NO	ITEM	UNIT	CONSTRUCTION TYPE CODE		
			80% FED, 20% STATE TOTAL QUANTITY	RWDY 0004 RURAL	038-0119 (EX.) 038-2026 (PR.) BRIDGE 0011 RURAL
40200800	AGGREGATE SURFACE COURSE, TYPE B	TON	120	120	
40600275	BITUMINOUS MATERIALS (PRIME COAT)	POUND	774	774	
40600400	MIXTURE FOR CRACKS, JOINTS, AND FLANGEWAYS	TON	0.5	0.5	
40600527	LEVELING BINDER (HAND METHOD), IL-9.5FG, N50	TON	0.6	0.6	
40600627	LEVELING BINDER (MACHINE METHOD), IL-9.5FG, N50	TON	48	48	
40600990	TEMPORARY RAMP	50 YD	40	40	
40603310	HOT-MIX ASPHALT SURFACE COURSE, MIX "C", N50	TON	96	96	
40701886	HOT-MIX ASPHALT PAVEMENT (FULL-DEPTH), 10 1/4"	50 YD	126	126	
48203029	HOT-MIX ASPHALT SHOULDERS, 8"	50 YD	159	159	
48203100	HOT-MIX ASPHALT SHOULDERS	TON	146	146	
50100100	REMOVAL OF EXISTING STRUCTURES	EACH	1		1
50105220	PIPE CULVERT REMOVAL	FOOT	42	42	
50800105	REINFORCEMENT BARS	POUND	1700		1700
50800515	BAR SPLICERS	EACH	20		20

FILE NAME *	USER NAME * mcfaddenk	DESIGNED -	REVISED -	STATE OF ILLINOIS DEPARTMENT OF TRANSPORTATION	SUMMARY OF QUANTITIES			F.A.P. RTE.	SECTION	COUNTY	TOTAL SHEETS	SHEET NO.
c:\pr_work\pvidot\mcfaddenk\0288918	06892-ah-schedule.dgn	DRAWN -	REVISED -		840	137-BR	IRROQUOIS	24	4			
PLOT SCALE * 100.0000 ' / in.	CHECKED -	REVISED -	REVISED -		CONTRACT NO. 66892							
PLOT DATE * 8/13/2014	DATE -	REVISED -	REVISED -		SCALE:	SHEET NO. OF SHEETS	STA.	TO STA.	ILLINOIS FED. AID PROJECT			

Rev 1

SUMMARY OF QUANTITIES					
CODE NO	ITEM	UNIT	CONSTRUCTION TYPE CODE		
			201, FED. 201, STATE TOTAL QUANTITY	R0WY 0004 RURAL	038-0119 (EX.) 038-2026 (PR.) BRIDGE 0011 RURAL
51500100	NAME PLATES	EACH	1		1
54001001	BOX CULVERT END SECTIONS, CULVERT NO. 1	EACH	2		2
54003000	CONCRETE BOX CULVERTS	CU-YD	18.2		18.2
54011210	PRECAST CONCRETE BOX CULVERTS 12' X 10'	FOOT	120		120
54213450	END SECTIONS 15"	EACH	4	4	
5400220	PIPE CULVERTS, CLASS D, TYPE 1 15"	FOOT	100	100	
* 63000001	STEEL PLATE BEAM, GUARDRAIL TYPE A, 6 FOOT POSTS	FOOT	287.5	287.5	
* 63000025	STEEL PLATE BEAM GUARDRAIL, ATTACHED TO STRUCTURES	FOOT	50	50	
* 63100169	TRAFFIC BARRIER TERMINAL, TYPE 1 (SPECIAL) FLARED	EACH	4	4	
63200310	GUARDRAIL REMOVAL	FOOT	558	558	
63500105	DELINEATORS	EACH	4	4	
66600105	FURNISHING AND ERECTING RIGHT-OF-WAY MARKERS	EACH	8	8	
67100100	MOBILIZATION	LSUM	1	1	
70100460	TRAFFIC CONTROL AND PROTECTION, STANDARD 701306	LSUM	1	1	

14

* Specialty Items

Rev.

FILE NAME *	USER NAME * mcfaddenka	DESIGNED -	REVISED -	STATE OF ILLINOIS DEPARTMENT OF TRANSPORTATION	SUMMARY OF QUANTITIES	F.A.P. RTE.	SECTION	COUNTY	TOTAL SHEETS	SHEET NO.
c:\pwwork\pvidot\mcfaddenka\d0288918\066892-shr-schedule.dgn	DRAWN -	REVISED -	840			137-BR	IRROUOIS	24	5	
PLOT SCALE * 1/8" = 1'-0"	CHECKED -	REVISED -	CONTRACT NO. 66892							
PLOT DATE * 8/13/2014	DATE -	REVISED -	SCALE:			SHEET NO. OF SHEETS	STA. TO STA.	[ILLINOIS] FED. AID PROJECT		

301 21 804

SUMMARY OF QUANTITIES					
CODE NO	ITEM	UNIT	CONSTRUCTION TYPE CODE		
			80% FED. 20% STATE TOTAL QUANTITY	RDWY 0004 RURAL	038-0119 (EX.) 038-2026 (PR.) BRIDGE 0011 RURAL
70103815	TRAFFIC CONTROL SURVEILLANCE	CAL DA	20	20	
70300100	SHORT TERM PAVEMENT MARKING	FOOT	86	86	
70301000	WORK ZONE PAVEMENT MARKING REMOVAL	SO FT	29	29	
* 78001110	PAINT PAVEMENT MARKING - LINE 4"	FOOT	1720	1720	
* 78001130	PAINT PAVEMENT MARKING - LINE 6"	FOOT	220	220	
* 78100100	RAISED REFLECTIVE PAVEMENT MARKER	EACH	10	10	
* 78200410	GUARDRAIL MARKERS, TYPE A	EACH	20	20	
* 78201000	TERMINAL MARKERS - DIRECT APPLIED	EACH	4	4	
78300200	RAISED REFLECTIVE PAVEMENT MARKER REMOVAL	EACH	10	10	
X0323265	REMOVE EXISTING RIP RAP	SO YD	246	246	
X0327726	MEMBRANE WATERPROOFING FOR CULVERTS	SO YD	208 . 2		208 . 2
X3550015	HOT-MIX ASPHALT BASE COURSE, (VARIABLE DEPTH)	TON	75	75	
X4401198	HOT-MIX ASPHALT SURFACE REMOVAL, VARIABLE DEPTH	SO YD	1275	1275	
X5121800	PERMANENT STEEL SHEET PILING	SO FT	1912		1912

*Specialty Items

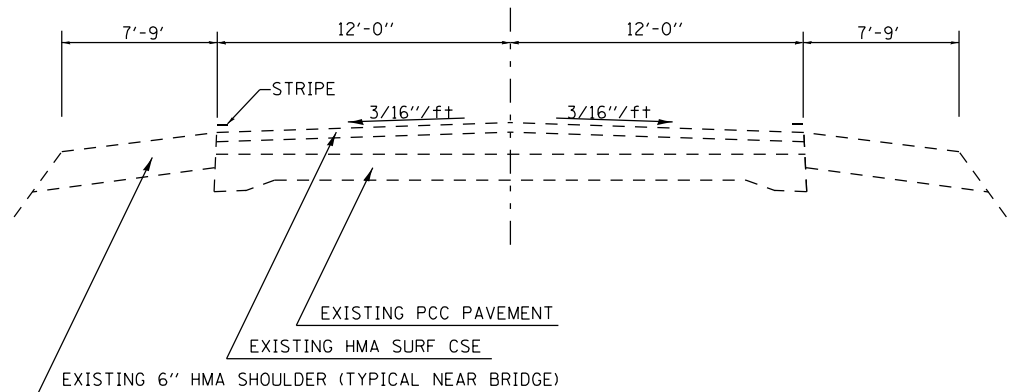
Rev.

FILE NAME *	USER NAME * mcfaddenka	DESIGNED -	REVISED -	STATE OF ILLINOIS DEPARTMENT OF TRANSPORTATION	SUMMARY OF QUANTITIES	F.A.P. RTE.	SECTION	COUNTY	TOTAL SHEETS	SHEET NO.	
c:\pwwork\pvidot\mcfaddenka\02280910	66892-ahs-schedule.dgn	DRAWN -	REVISED -			840	137-BR	ILLINOIS	24	6	
PLOT SCALE * 100.0000 1/4"	CHECKED -	REVISED -				SCALE: SHEET NO. OF SHEETS STA. TO STA.		CONTRACT NO. 66892			
PLOT DATE * 8/13/2014	DATE -	REVISED -				ILLINOIS FED. AID PROJECT					

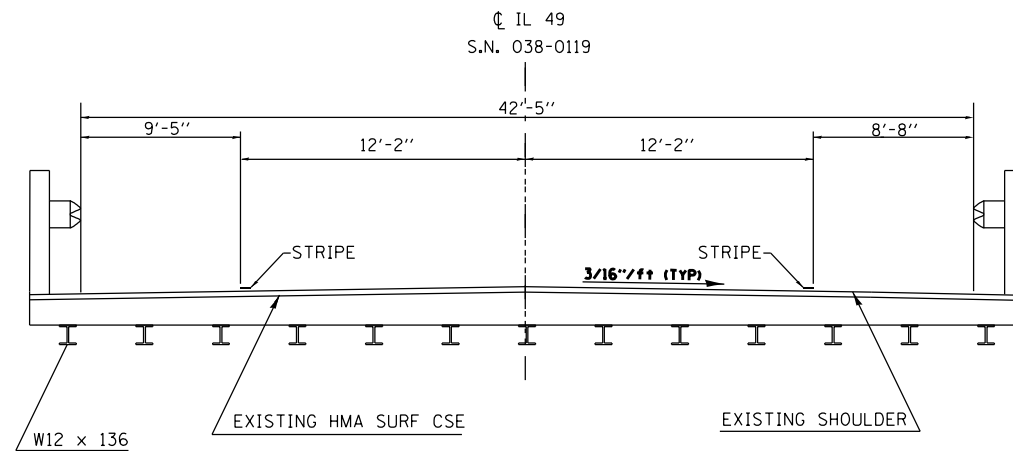
SUMMARY OF QUANTITIES					
CODE NO	ITEM	UNIT	CONSTRUCTION TYPE CODE		
			80% FED, 20% STATE TOTAL QUANTITY	RDWY 0004 RURAL	038-0119 (EX.) 038-2026 (PR.) BRIDGE 0011 RURAL
x7010216	TRAFFIC CONTROL AND PROTECTION, (SPECIAL)	LSUM	1	1	
Z0005216	HOT-MIX ASPHALT STABILIZATION 6" AT STEEL PLATE BEAM GUARDRAIL	SO YD	163	163	
Z0030850	TEMPORARY INFORMATION SIGNING	SO FT	42	42	

3

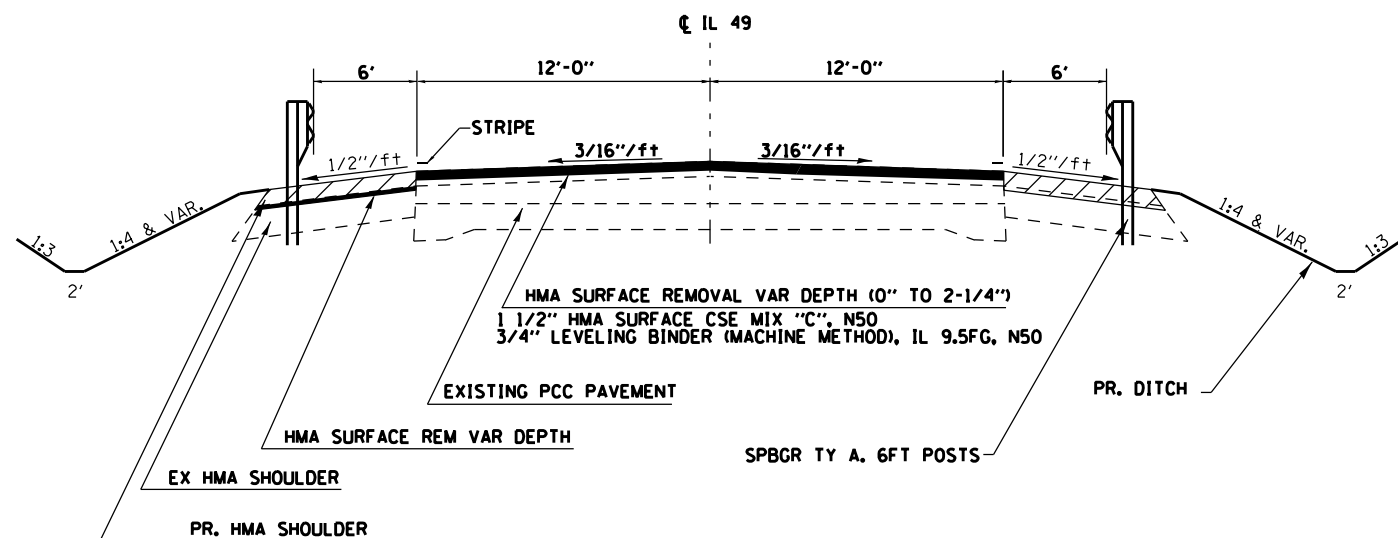
FILE NAME *	USER NAME * mcfaddenho	DESIGNED -	REVISED -	STATE OF ILLINOIS DEPARTMENT OF TRANSPORTATION	SUMMARY OF QUANTITIES	F.A.P. RTE.	SECTION	COUNTY	TOTAL SHEETS	SHEET NO.	
c:\pvc\work\p1dot\mcfaddenho\q9288910	66892-sht-schedule.dgn	DRAWN -	REVISED -			840	137-BR	IRROUOIS	24	7	
	PLOT SCALE = 100.0000' / 1"	CHECKED -	REVISED -			SCALE:		SHEET NO. OF SHEETS		STA. TO STA.	ILLINOIS FED. AID PROJECT
	PLOT DATE = 8/13/2014	DATE -	REVISED -			CONTRACT NO. 66892					



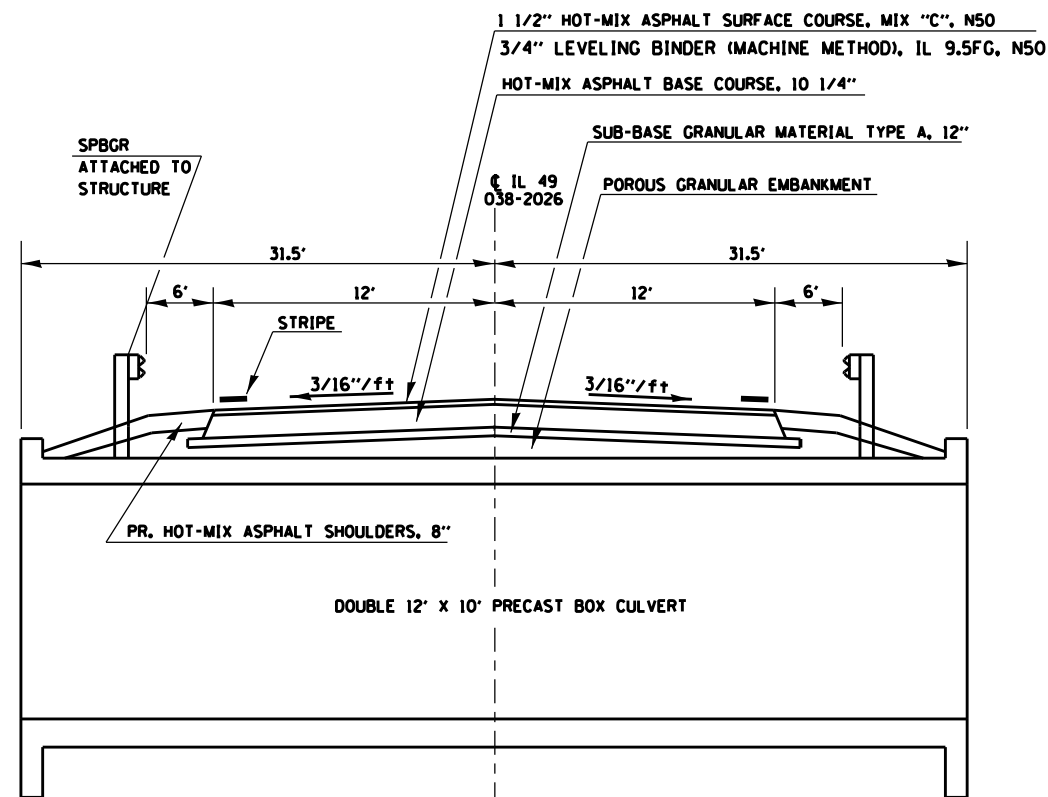
EXISTING ROADWAY TYPICAL SECTION



EXISTING BRIDGE TYPICAL SECTION



PROPOSED ROADWAY TYPICAL SECTION



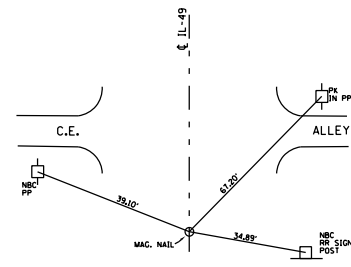
PROPOSED BRIDGE TYPICAL SECTION

MIXTURES TABLE					
	HMA BASE COURSE	HMA LEVEL BINDER	HMA SURFACE	HMA GUARDRAIL STABILIZATION	HMA SHOULDERS
PG GRADE**	PG-64-22	PG-64-22	PG-64-22	PG-64-22	PG-64-22
DESIGN AIR Voids	4.0% @ N50	4.0% @ N50	4.0% @ N50	4.0% @ N50	4.0% @ N50
MIXTURE COMPOSITION	IL 19.0FG	IL 9.5FG	IL 9.5	IL 19.0FG	IL 19.0FG
FRICTION AGGREGATE			MIXTURE C		
DENSITY TEST METHOD	CORES*	CORES	CORES	SATISFACTION OF ENGINEER	CORES*

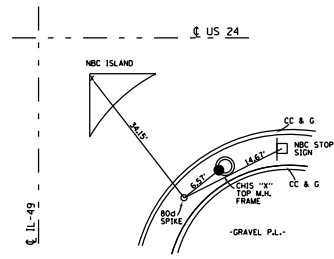
*MATERIAL SHALL BE COMPACTED TO 93.0-97.4 PERCENT OF THE MAXIMUM THEORETICAL DENSITY, EXCEPT THAT WHEN PLACED AS FIRST LIFT ON AN UNIMPROVED SUBGRADE THE MINIMUM PERCENT COMPACTION SHALL BE 92.0 PERCENT. THE MAXIMUM THEORETICAL DENSITY SHALL BE DETERMINED FROM THE MOVING AVERAGE AS SPECIFIED IN THE OC/OA SPECIFICATION.

**WHEN RAP/RAS ABR EXCEEDS 20 PERCENT, THE HIGH AND LOW VIRGIN ASPHALT BINDER GRADES SHALL EACH BE REDUCED BY ONE GRADE (I.E. 25% ABR WOULD REQUIRE VIRGIN ASPHALT BINDER GRADE OF PG64-22 TO BE REDUCED TO PG58-22).

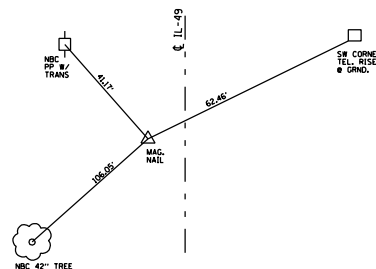
FILE NAME =	USER NAME = mcfaddenka	DESIGNED -	REVISED -	STATE OF ILLINOIS DEPARTMENT OF TRANSPORTATION	TYPICAL SECTIONS			F.A.P. RTE.	SECTION	COUNTY	TOTAL SHEETS	SHEET NO.
es:\pwork\pwork\mcfaddenka\0288918\0366892-sht-typico1.dgn	PLOT SCALE = 100.0000' / in.	DRAWN -	REVISED -					840	137-BR	IROUOIS	24	8
PLOT DATE = 8/13/2014	DATE -	CHECKED -	REVISED -		SCALE: SHEET OF SHEETS STA. TO STA.			CONTRACT NO. 66892				
					ILLINOIS FED. AID PROJECT							



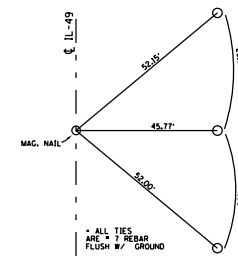
P.O.T. 1253+92.60



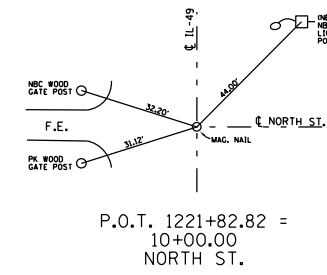
CP 49501
1251+14.25
35.63' LT



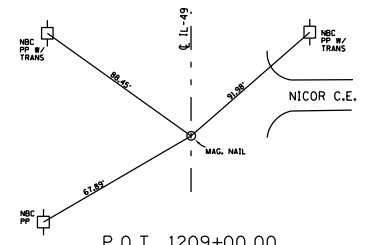
P.I. 1241+00.00
5.13' RT



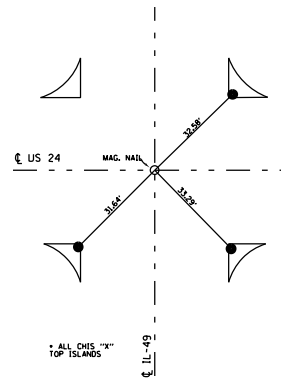
P.C. 1234+96.57 BK=
1236+00.00 AH



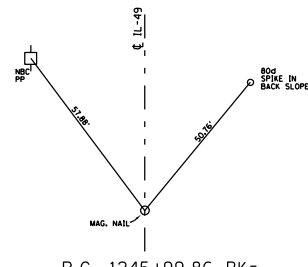
P.O.T. 1221+82.82 =
10+00.00
NORTH ST.



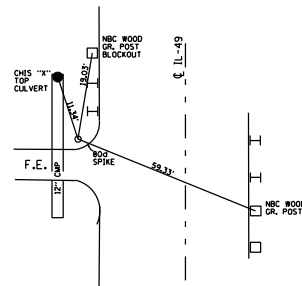
P.O.T. 1209+00.00



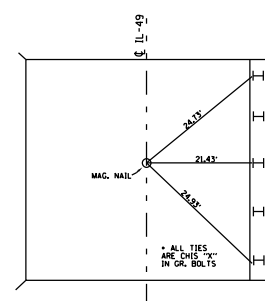
P.O.T. 1250+57.00



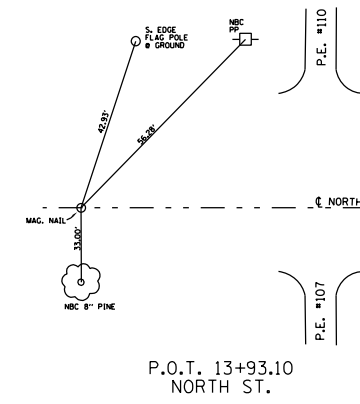
P.C. 1245+99.86 BK=
1246+00.01 AH



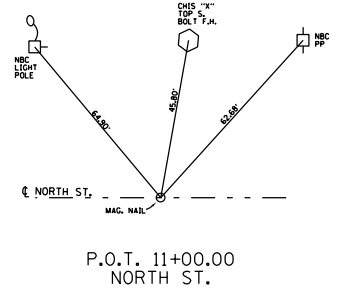
CP 49500
1225+19.27 24.32' RT



P.O.T. SN 038-0119
1224+00.00



P.O.T. 13+93.10
NORTH ST.



P.O.T. 11+00.00
NORTH ST.

FILE NAME =	USER NAME = mcfaddenka	DESIGNED -	REVISED -
ca:\pw\work\p1dot\mcfaddenka\10288918\366892-sht-typrcol.dgn		DRAWN -	REVISED -
	PLOT SCALE = 100.0000' / in.	CHECKED -	REVISED -
	PLOT DATE = 8/13/2014	DATE -	REVISED -

STATE OF ILLINOIS
DEPARTMENT OF TRANSPORTATION

BENCH MARKS AND TIE POINTS

SCALE: SHEET OF SHEETS STA. TO STA.

F.A.P. RTE.	SECTION	COUNTY	TOTAL SHEETS	SHEET NO.
840	137-BR	IRROUOIS	24	9
CONTRACT NO. 66892				
ILLINOIS FED. AID PROJECT				

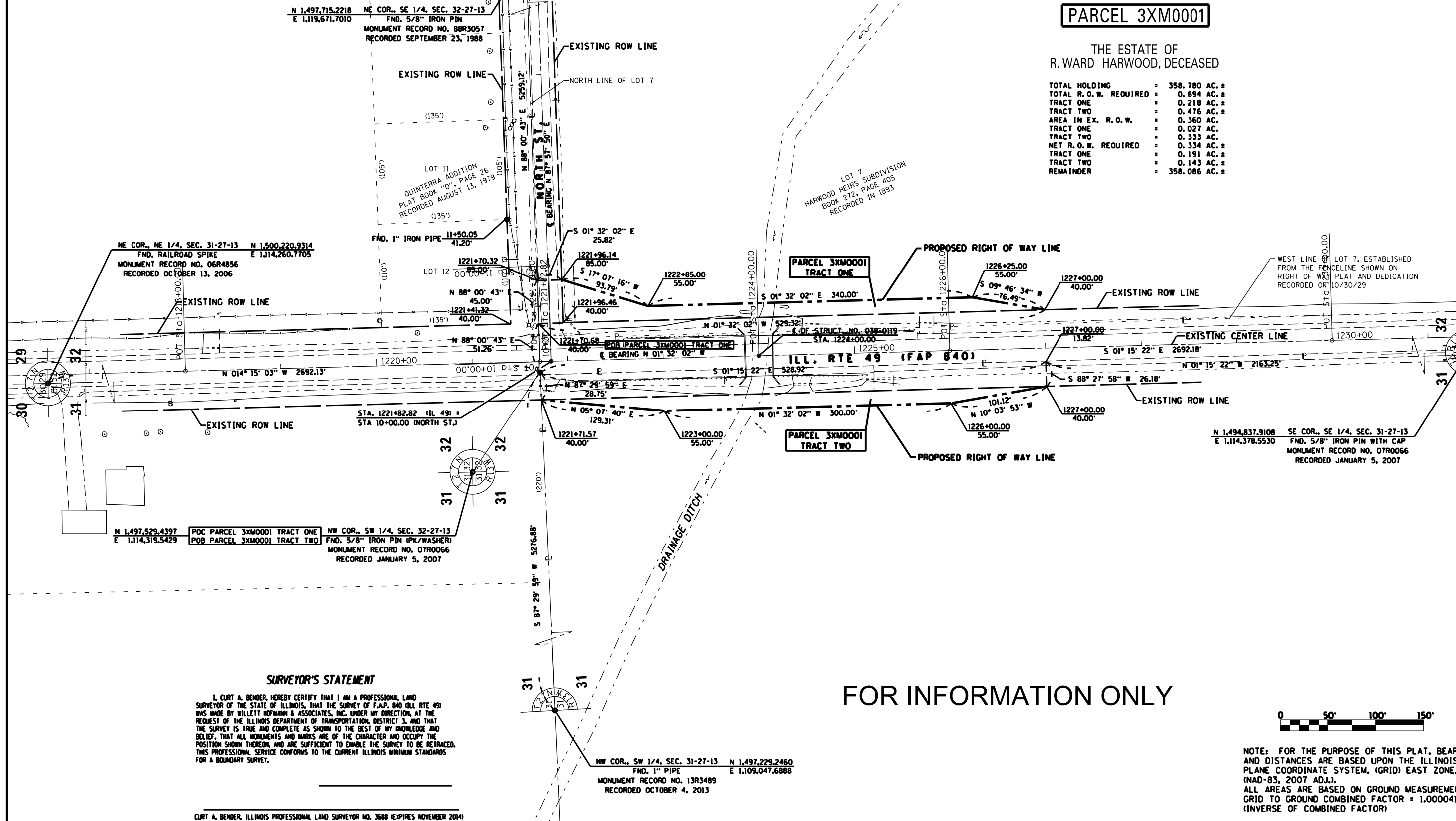
SEC. 31 & 32, T. 27 N., R. 13 W., 2ND P.M.
CRESCENT CITY, ILLINOIS



PARCEL 3XM0001

THE ESTATE OF
R. WARD HARWOOD, DECEASED

TOTAL HOLDING	=	358.780 AC. ±
TOTAL R. O. W. REQUIRED	=	0.694 AC. ±
TRACT ONE	=	0.218 AC. ±
TRACT TWO	=	0.476 AC. ±
AREA IN EX. R. O. W.	=	0.360 AC.
TRACT ONE	=	0.027 AC.
TRACT TWO	=	0.333 AC.
NET R. O. W. REQUIRED	=	0.334 AC. ±
TRACT ONE	=	0.191 AC. ±
TRACT TWO	=	0.143 AC. ±
REMAINDER	=	358.086 AC. ±



SURVEYOR'S STATEMENT

I, CURT A. BENDER, HEREBY CERTIFY THAT I AM A PROFESSIONAL LAND SURVEYOR OF THE STATE OF ILLINOIS, THAT THE SURVEY OF F.A.P. 840 (ILL. RTE 49) WAS MADE BY WILLET HOFMANN & ASSOCIATES, INC. UNDER MY DIRECTION, AT THE REQUEST OF THE ILLINOIS DEPARTMENT OF TRANSPORTATION, DISTRICT 3, AND THAT THE SURVEY IS TRUE AND COMPLETE AS SHOWN TO THE BEST OF MY KNOWLEDGE AND BELIEF, THAT ALL MONUMENTS AND MARKS ARE OF THE CHARACTER AND OCCUPY THE POSITION SHOWN THEREON, AND ARE SUFFICIENT TO ENABLE THE SURVEY TO BE RETRACED. THIS PROFESSIONAL SERVICE CONFORMS TO THE CURRENT ILLINOIS MINIMUM STANDARDS FOR A BOUNDARY SURVEY.

CURT A. BENDER, ILLINOIS PROFESSIONAL LAND SURVEYOR NO. 3688 (EXPIRES NOVEMBER 2014)

FOR INFORMATION ONLY



NOTE: FOR THE PURPOSE OF THIS PLAT, BEARINGS AND DISTANCES ARE BASED UPON THE ILLINOIS STATE PLANE COORDINATE SYSTEM, (GRID) EAST ZONE, (NAD-83, 2007 ADJ.). ALL AREAS ARE BASED ON GROUND MEASUREMENTS GRID TO GROUND COMBINED FACTOR = 1.000041193 (INVERSE OF COMBINED FACTOR)

FILE NAME =	USER NAME = mcfaddenka	DESIGNED -	REVISED -	STATE OF ILLINOIS DEPARTMENT OF TRANSPORTATION	RIGHT OF WAY PLAN			F.A.P. RTE. = 840	SECTION = 137-BR	COUNTY = IROUOIS	TOTAL SHEETS = 24	SHEET NO. = 10
ea:\pwork\pwork\mcfaddenka\08288918\0366892-sht-details.dgn		DRAWN -	REVISED -		SCALE:	SHEET NO. OF SHEETS	STA. TO STA.	CONTRACT NO. 66892				
PLOT SCALE = 100.0000' / 1"		CHECKED -	REVISED -		ILLINOIS FED. AID PROJECT							
PLOT DATE = 8/12/2014		DATE -	REVISED -									

MAINLINE SCHEDULE																			
LOCATION IL 49	NOTES	LENGTH	PVMT WIDTH	SHLD WIDTH	HMA SURF. REM. VAR. DEPTH	BIT MAT PRIME COAT	LEVEL BINDER (MM, N50)	LEVEL BINDER (MM, N50)	HMA SURF CSE. MIX "C" N50	MIX FOR JOINTS, CRACKS, & FLANGWAYS	HMA BSE CSE VAR. DEPTH	HMA PVT FULL DEPTH 10 1/4"	SUBBASE GR MAT TY. A 12"	TEMP RAMP	HMA SHLD 8"	HMA SHLD	HMA PVT FULL DEPTH 10 1/4"	AGG SHLD TY. B	AGG SURF CSE. TY. B
STA. TO STA.		FOOT	FOOT	FOOT	SO YD	FOOT	TON	TON	TON	TON	TON	SO YD	SO YD	SO YD	SO YD	TON	TON	SO YD	TON
STA. 1222+00 TO STA. 1223+86.5	BEGIN PROJECT	187	24	9	545	335.7	20.9	0.25	42	0.15	22	37	67	20	33	69	126	4	
STA. 1223+86.5 TO STA. 1224+13.5	S.N. 038-2506	27	24	10	60	48.6	3	0.04	6	0.02		132	67	20	54				
STA. 1224+13.5 TO STA. 1226+30.0	END PROJECT	217	24	10	670	389.7	24.2	0.29	49	0.17	53	37	67	20	72	77	126	7	120
TOTAL					1275	774	48	0.6	96	0.34	75	147	267	40	159	146	126	11	120

PAVEMENT MARKING SCHEDULE								
LOCATION IL 49	NOTES	LENGTH	PAINT PVMT MK 4"	PAINT PVMT MK 6"	RAISED REF PVMT MARK REMOVAL	RAISED REFLECT PVMT MARK	SHORT TERM	WORK ZONE PVT MRK REMOVAL
STA. TO STA.		FOOT	FOOT	FOOT	EACH	EACH	FOOT	SO FT
STA. 1222+00 TO STA. 1223+72.5	BEGIN PROJECT	172.5	690	90	4	4	35	12
STA. 1223+72.5 TO STA. 1224+13.5	S.N. 038-2506	41	164	20	1	1	8	3
STA. 1224+13.5 TO STA. 1226+30.0	END PROJECT	216.5	866	110	5	5	43	14
TOTAL			1720	220	10	10	86	29

GUARDRAIL SCHEDULE								
LOCATION IL 49	LENGTH	NOTES	GUARDRAIL REMOVAL	TBT TY 1 SP TANG.	SPBGR ATTACHED TO STRUCT.	SPBGR TY. A 6" POSTS	GUARDRAIL MARKER TY. A	HMA STABILIZATION 6"
			FT	EACH	FOOT	FOOT	EACH	SO YD
ILLINOIS COUNTY								
STA. 1222+00 TO STA. 1223+86.5	186.5	BEGIN PROJECT	308	2	50	163	6	88
STA. 1223+86.5 TO STA. 1224+13.5	27.0	S.N. 038-2506	50					
STA. 1224+13.5 TO STA. 1226+30.0	216.5	END PROJECT	200	2	50	125	7	75
TOTAL			558	4	50	287.5	13	163

DELINATOR SCHEDULE	
STATION	EACH
1225+20.22 RT	1
1225+67.04 LT	1
1225+69.94 RT	1
1226+16.95 LT	1
TOTAL	4

SEEDING AND EROSION CONTROL										
LOCATION IL 49	NOTES	LENGTH	SEEDING CLASS 2A	MULCH METHOD 2	TEMP EROSION CONTROL SEEDING	NITROGEN FERTILIZER	PHOSPHORUS FERTILIZER	POTASSIUM FERTILIZER	TEMPORARY DITCH CHECK	INLET AND PIPE PROTECTION
		FOOT	ACRE	ACRE	POUNDS	POUNDS	POUNDS	POUNDS	FOOT	EACH
STA. 1222+00 TO STA. 1223+72.5	BEGIN PROJECT	173	0.18	0.18	71	16	16	16	54	
STA. 1223+72.5 TO STA. 1224+13.5	S.N. 038-2026	41							13	
STA. 1224+13.5 TO STA. 1226+30.0	END PROJECT	217	0.24	0.24	95	21	21	21	68	4
TOTAL			0.42	0.42	166	37	37	37	134	4

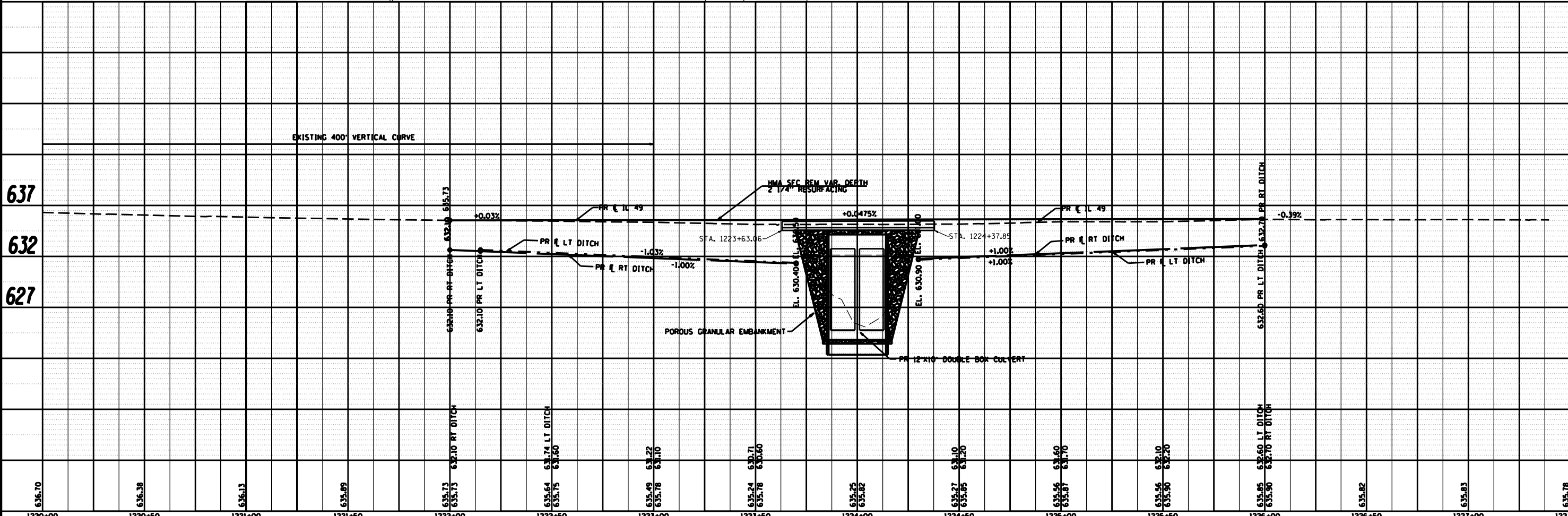
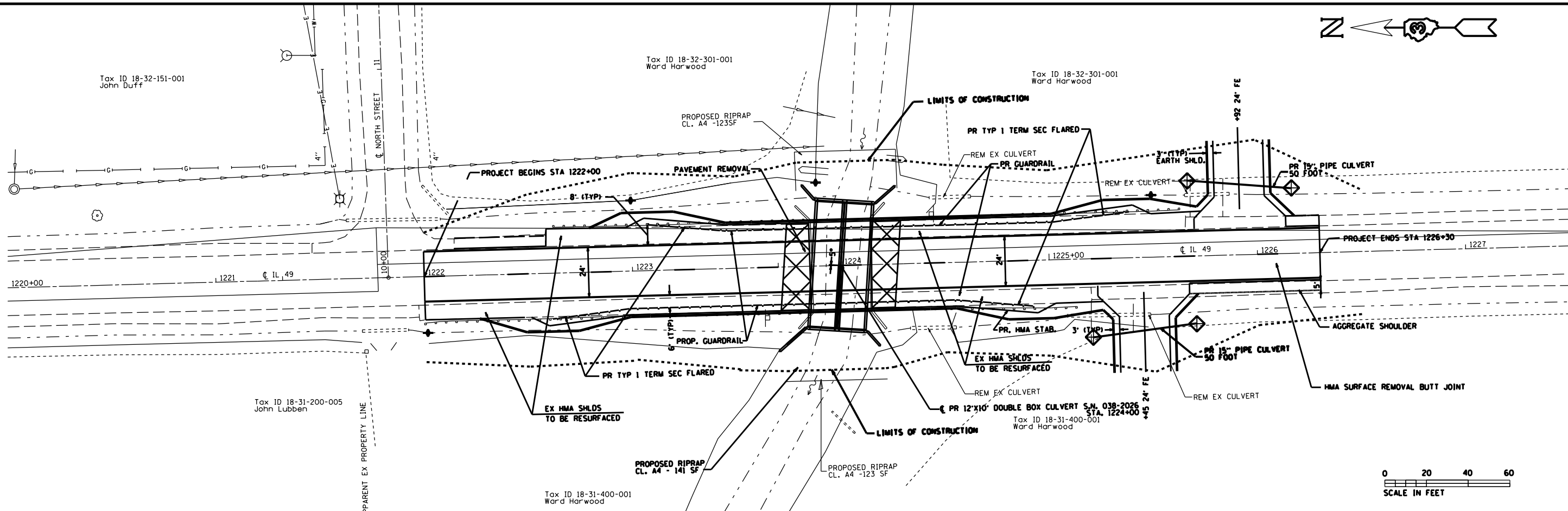
EARTH EXCAVATION				
LOCATION	EARTH EXCAVATION (CUTS)	EARTH EXCAVATION ADJ FOR SHRINKAGE 25%	EMBANKMENT (FILLS)	(FURNISHED EX.) EARTHWORK BALANCE WASTE (+) OR SHORTAGE (-)
STA. TO STA.	CU YD	CU YD	CU YD	CU YD
STA. 1222+00 TO STA. 1226+30	277.8	208.3	517	-308.7
TOTALS	278			-309

PLAN	SURVEYED	DATE
	PLOTTED	BY
	ALIGNED	
	CHECKED	
	FILED	
	NO.	
	FILE NAME	

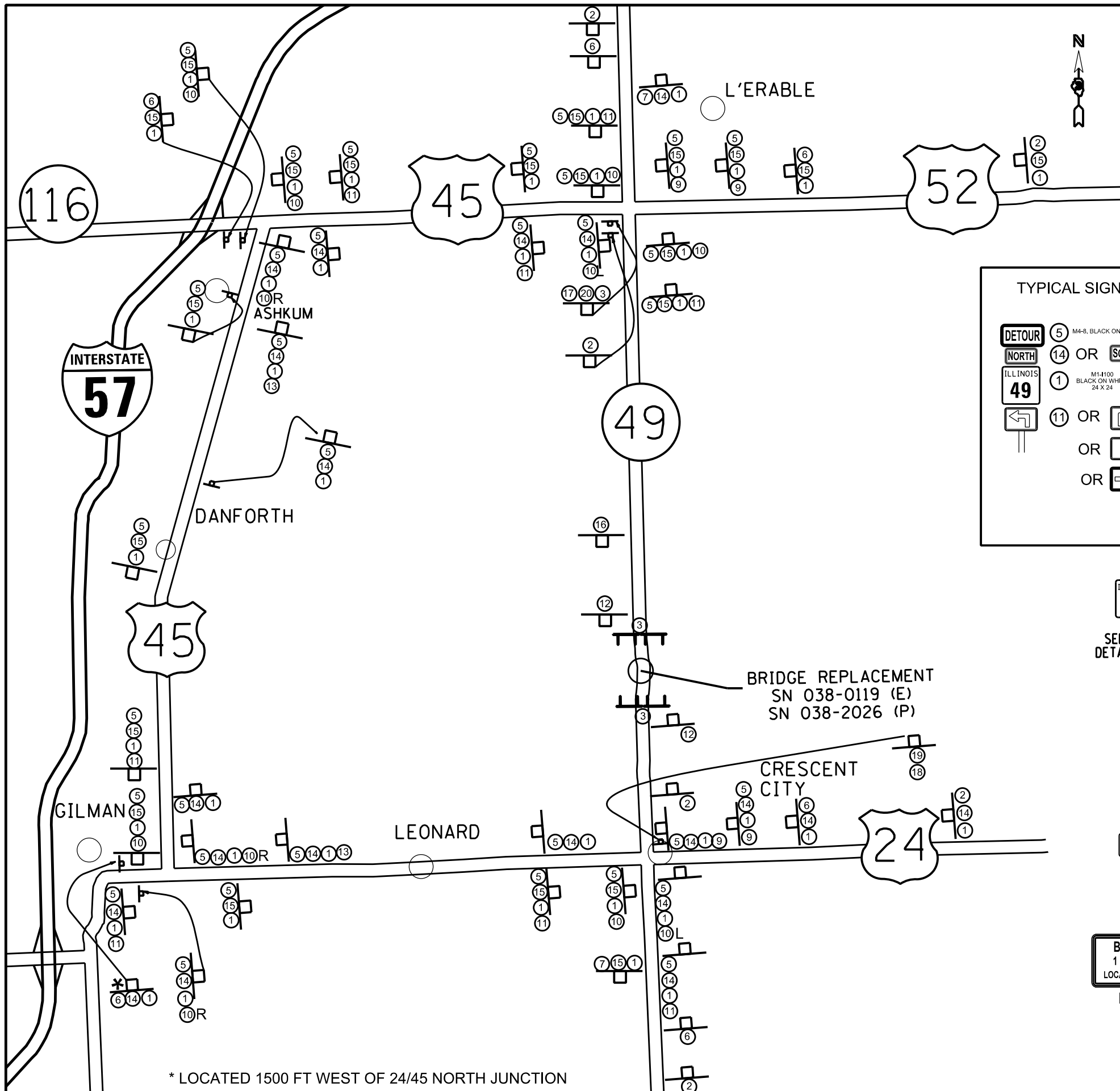
PROFILE	SURVEYED	DATE
	PLOTTED	BY
	GRADES CHECKED	
	STRUCTURE NOTATIONS OK'D	
	NO.	
	FILE NAME	

MATCH LINE STA. 1220+00

MATCH LINE STA. 1227+40



FILE NAME =	USER NAME = mcfaddenka	DESIGNED -	REVISED -	STATE OF ILLINOIS DEPARTMENT OF TRANSPORTATION	PLAN & PROFILE		F.A.P. RTE.	SECTION	COUNTY	TOTAL SHEETS	SHEET NO.
c:\pwork\pwidot\mcfaddenka\d0288918\036892-sht-plan.dgn	PLOT SCALE = 50.0000' / in.	DRAWN -	REVISED -				840	137-BR	IRROUOIS	24	12
Default	PLOT DATE = 8/12/2014	CHECKED -	REVISED -				CONTRACT NO. 66892			ILLINOIS FED. AID PROJECT	
		DATE -	REVISED -				SCALE:	SHEET	OF	SHEETS	STA.



GENERAL NOTES:

- 1.) ONLY SIGNS THAT ARE TO BE ADDED ARE SHOWN ON THIS MAP.
- 2.) ALL SIGNS TO BE POST MOUNTED.
- 3.) CONTRACTOR IS RESPONSIBLE FOR MAINTAINING ALL SIGNAGE AT ALL TIMES.
- 4.) ROAD CLOSURE DETAILS SHALL BE DONE IN ACCORDANCE WITH BLR-21.
- 5.) DETOUR SIGNS SHALL BE COVERED WHEN NOT IN USE.
- 6.) ALL SIGNS WILL BE SUPPLIED AND INSTALLED BY THE CONTRACTOR.
- 7.) SIGNS SHALL HAVE TYPE A FLASHING LIGHT, ABOVE FIRST TWO SIGNS
- 8.) DETOUR CONFIRMATION SIGNING SHALL BE WITHIN 1000 FT. OF THE INTERSECTION.
- 9.) COVER ALL CONFLICTING ROUTE MARKER SIGNS AND DIRECTIONAL SIGNS (DO NOT DRILL HOLES INTO SIGN FACE OR USE TAPE).

TYPICAL SIGNAGE STRUCTURE

5 M4-8, BLACK ON FLORESCENT ORANGE (24 X 12)
 14 OR 15 M3-3 BLACK ON WHITE (24 X 12)
 1 M1-100 BLACK ON WHITE (24 X 24)
 11 OR 13
 OR 9
 OR 10

SIGN DETAIL
SIGN PANEL - TYPE 2

NOTES:
 1.) AREA = 4.0 SQ. FT.
 2.) TOTAL AREA REQUIRED (38 SIGNS) = 152.0 SQ. FT.
 4.) LEGEND BLACK
 5.) BACKGROUND = WHITE

* LOCATED 1500 FT WEST OF 24/45 NORTH JUNCTION

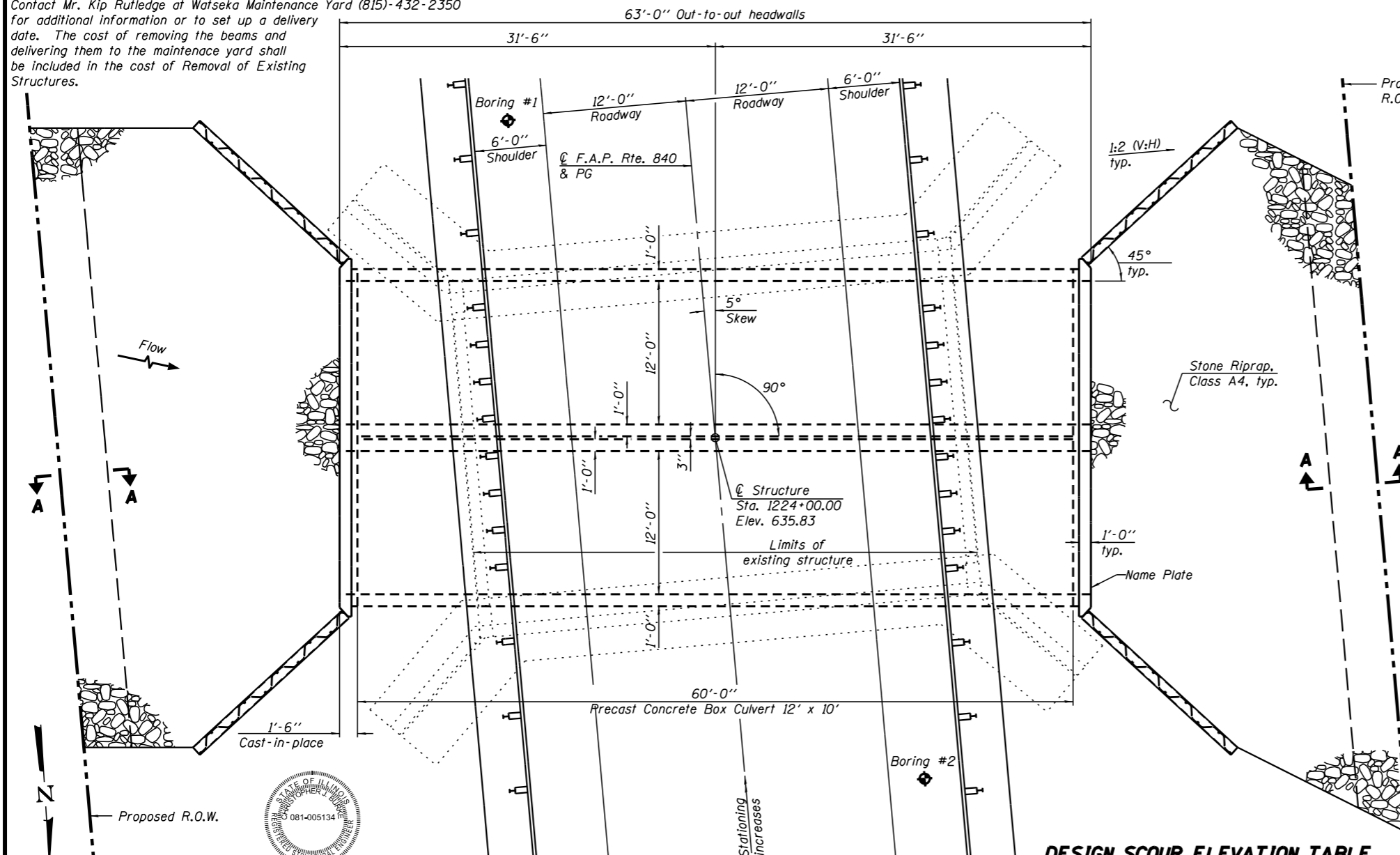
* BLACK ON FLORESCENT ORANGE

FILE NAME =	USER NAME = mcfaddenka	DESIGNED -	REVISED -	STATE OF ILLINOIS DEPARTMENT OF TRANSPORTATION	DETOUR PLAN				F.A.P. RTE. =	SECTION	COUNTY	TOTAL SHEETS	SHEET NO.
ca:\pwwork\pwwork\mcfaddenka\d0288918\0366892-sht-detail.dgn		DRAWN -	REVISED -		840	137-BR	IRROUOIS	24	13				
PLOT SCALE = 200.0000' / in.		CHECKED -	REVISED -		SCALE: SHEET OF SHEETS STA. TO STA.				CONTRACT NO. 66892				
PLOT DATE = 8/13/2014		DATE -	REVISED -		ILLINOIS FED. AID PROJECT								

Benchmark: BM #119 - Chiseled "□" on SE wingwall:
Sta. 1224+09.29, 21.03' Lt., Elev. 634.49

Existing Structure: SN 038-0119 built in 1928 as S.B.I. Route 49, Section 137-B at Sta. 1224+00.00. A one span reinforced concrete slab bridge 30'-0" back-to-back abutments and 42'-2" out-to-out on pile supported closed abutments. The existing structure is to be removed and replaced. Traffic will be maintained using a detour route during construction.

The temporary steel beams under the existing concrete beams shall be salvaged and delivered to a District 3 maintenance yard. Contact Mr. Kip Rutledge at Watseka Maintenance Yard (815)-432-2350 for additional information or to set up a delivery date. The cost of removing the beams and delivering them to the maintenance yard shall be included in the cost of Removal of Existing Structures.



LONGITUDINAL SECTION

PLAN

CULVERT CONSTRUCTION SEQUENCE

1. Remove existing structure
2. Build cutoff wall
3. Prepare bed
4. Place precast box culvert sections.
5. Form and place concrete in end section
6. Drive sheeting
7. Backfill culvert and wings
8. Install sheet pile cap

TOTAL BILL OF MATERIAL

ITEM	UNIT	TOTAL
Removal of Existing Structures	Each	1
Name Plates	Each	1
Box Culvert End Sections, Culvert No. 1	Each	2
Precast Concrete Box Culvert 12' x 10'	Foot	120.0
Stone Riprap, Class A4	Sq. yd.	246
Filter Fabric	Sq. yd.	246
Membrane Waterproofing for Culverts	Sq. yd.	208.2

WATERWAY INFORMATION

Drainage Area = 5.75 sq. mi. Existing Low Grade Elev. 635.25 @ Sta. 1224+00 Proposed Low Grade Elev. 635.25 @ Sta. 1224+00

Flood	Freq. Yr.	Q C.F.S.	Opening Sq. Ft.		Nat. H.W.E.		Head - Ft.		Headwater El.	
			Exist.	Prop.	Exist.	Prop.	Exist.	Prop.	Exist.	Prop.
Design	10	448	167	200	630.9	0.0	0.0	630.9	630.9	
Base	50	718	219	240	632.8	0.1	0.1	632.9	632.9	
Base	100	839	219	240	633.4	0.2	0.2	633.6	633.6	
Overtopping	-	-	-	-	-	-	-	-	-	
Max. Calc.	500	1136	219	240	634.2	0.4	0.4	634.6	634.6	

Existing 10-year velocity = 2.5 ft./sec.
Proposed 10-year velocity = 2.2 ft./sec.

STATION 1224+00.00
BUILT 201 BY
STATE OF ILLINOIS
F.A.P. RTE. 840 SEC. 137-BR
LOADING HL-93
STRUCTURE NO. 038-2026

NAME PLATE
See Std. 515001

INDEX OF SHEETS

- 1 - General Plan & Elevation
- 2-3 - Box Culvert End Section Details
- 4 - Bar Splicer Assembly Details and Waterproofing Limits
- 5 - Soil Boring Logs

DESIGN SPECIFICATIONS

2012 AASHTO LRFD Bridge Design Specifications, 6th Edition
ASTM C1577

DESIGN STRESSES

FIELD UNITS

f'c = 3,500 psi
fy = 60,000 psi (Reinforcement)
fy = 50,000 psi (Permanent sheet piling)
fy = 50,000 psi (AASHTO M270, Grade 50W)

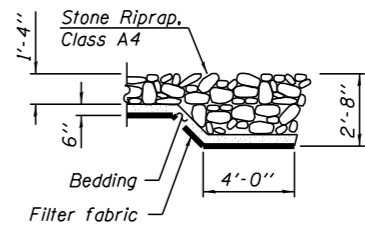
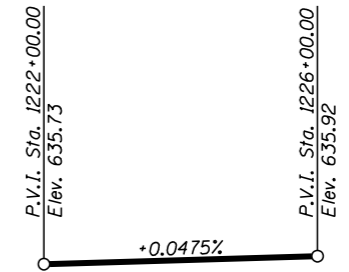
PRECAST UNITS

f'c = 5,000 psi
fy = 65,000 psi (Welded wire fabric)

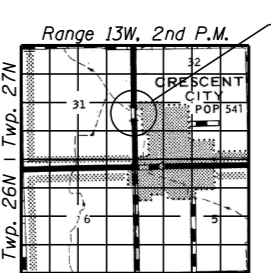
LOADING HL-93

Allow 50#/sq. ft. for future wearing surface.

PROFILE GRADE
(Along C.F.A.P. Rte. 840)



SECTION A-A



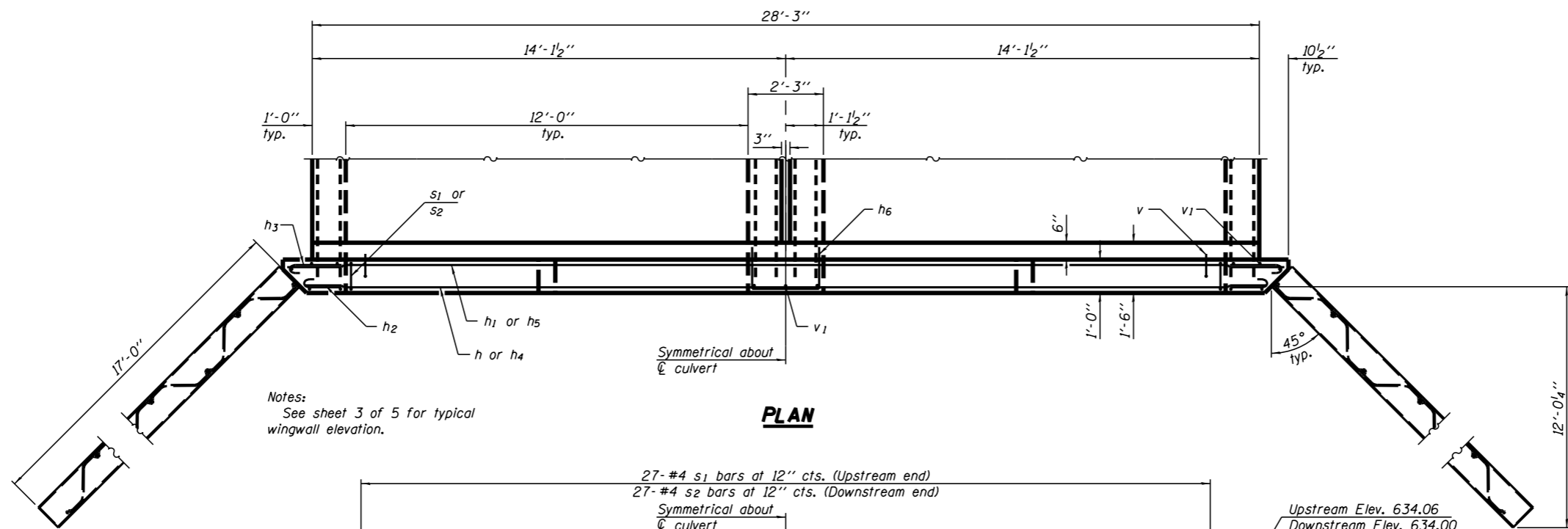
LOCATION SKETCH

DESIGN SCOUR ELEVATION TABLE

Design Scour Elevation (ft.)	Upstream	Downstream
	619.31	619.25

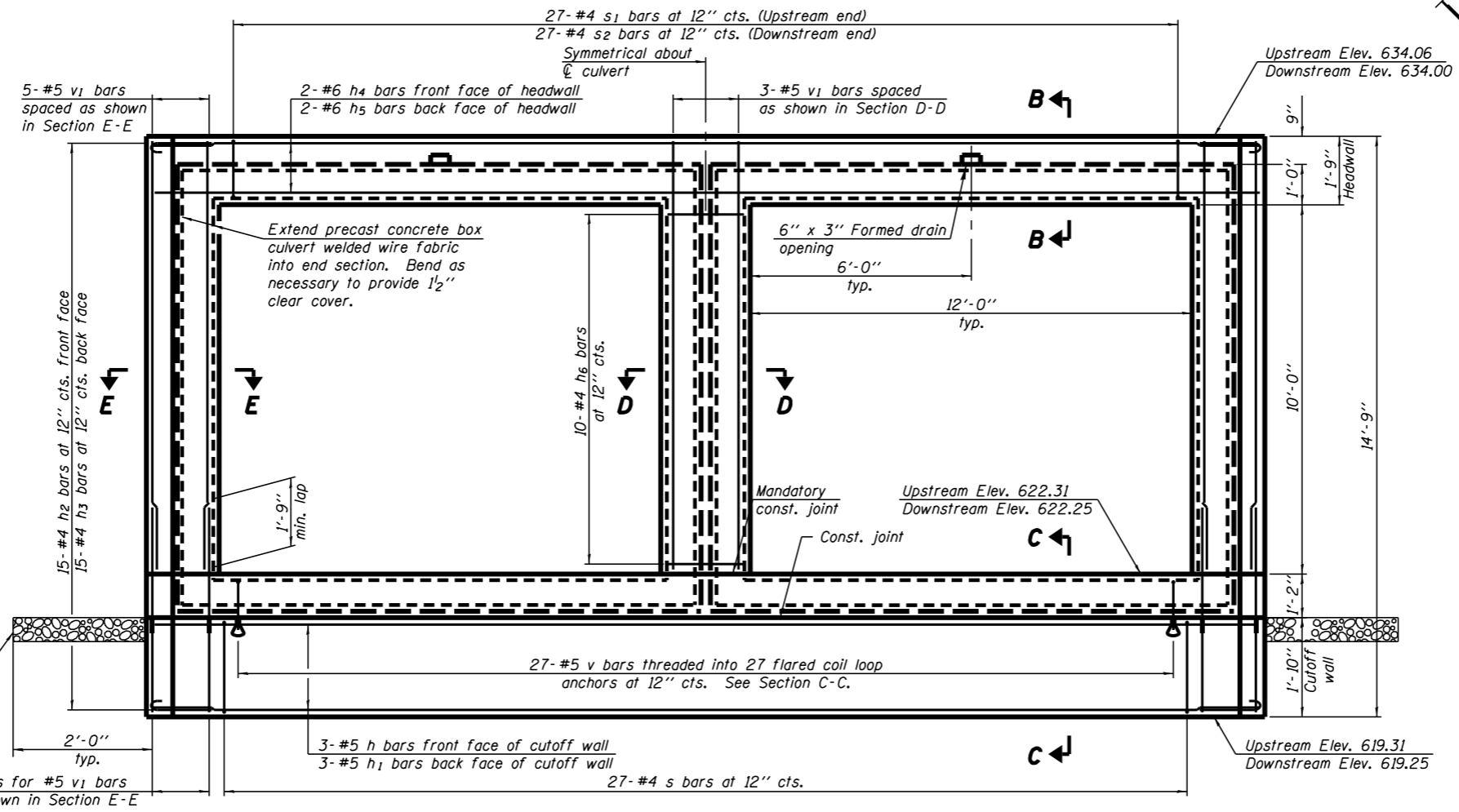


Christopher J. Burke
Exp. 11-30-2014
Date: 10-6-2014



Notes:
See sheet 3 of 5 for typical wingwall elevation.

PLAN



END ELEVATION

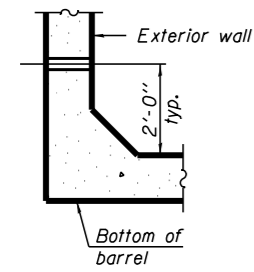
Wingwalls omitted in this view for clarity.
See sheet 3 of 5 for additional wingwall details.

GENERAL NOTES

Layout of slope protection system may be varied to suit ground conditions in the field as directed by the Engineer.
Excavation behind existing abutment walls shall be performed to balance front and back soil pressure before removing the existing superstructure.
The design fill height for this structure is maximum 2.55 feet and minimum 2.08 feet at edge of shoulder.
The precast concrete box culvert sections shall conform to the requirements of ASTM C1577.
The minimum effective section modulus of the permanent sheet pile wall shall be 29.8 in.³/ft.
The sheet pile cap shall be AASHTO M270 Grade 50W.
Fasteners shall be ASTM A325 Type 3. Bolts 1/2" φ, holes 5/8" φ.
The box culvert end section shall be built in the field and a precast option is not allowed except the cutoff wall may be precast. If the Contractor elects to use a precast cutoff wall, shop drawings and a proposed construction sequence shall be submitted to the Engineer for approval.
Areas of the precast box culvert in contact with cast-in-place concrete shall be sandblasted, cleaned, and wetted prior to placing concrete in the field according to Article 503.09(b).
The ends of the precast box sections adjacent to the end section shall be formed without the male and female shapes specified in Article 8.1 of ASTM C1577.
The joints between precast box sections shall be sealed, all voids filled with a mastic joint sealer. In addition, the joints shall be externally sealed on all four sides with a 13 inch wide external sealing band. The seal shall be centered over the joint, secured in place and protected during the backfilling process.
Sheet piling shall not be driven until the concrete strength has attained a minimum flexural strength of 650 psi or a minimum compressive strength of 3500 psi.
Due to low fill, provide waterproof membrane system over the top of the culvert.
See sheet 1 of 5 for culvert construction sequence.
See sheet 3 of 5 for Section B-B, C-C D-D, and E-E.
See sheet 3 of 5 for additional wing wall details.

BILL OF MATERIAL

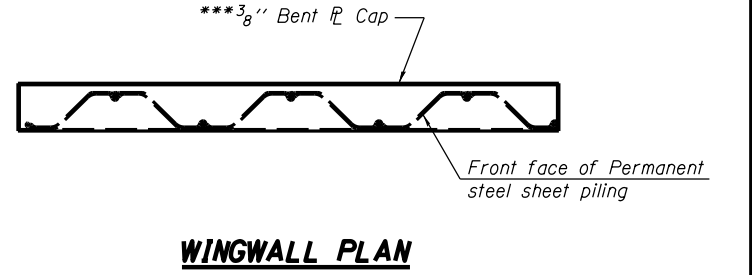
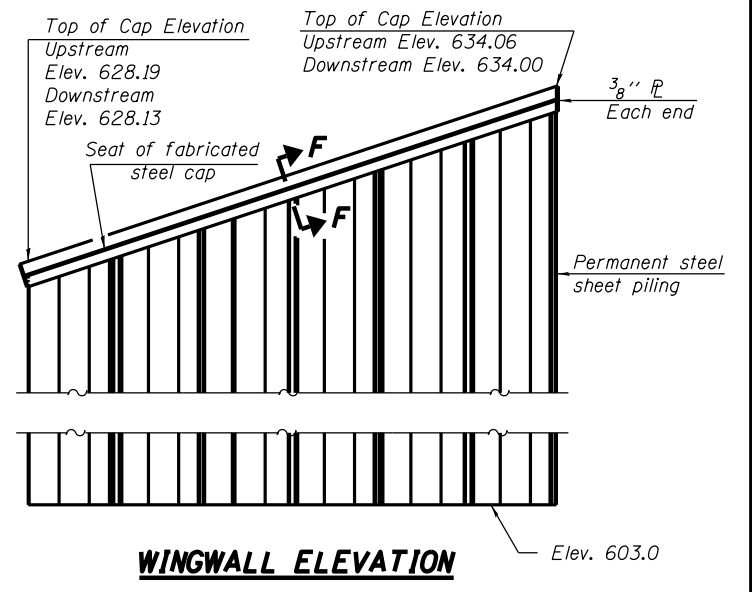
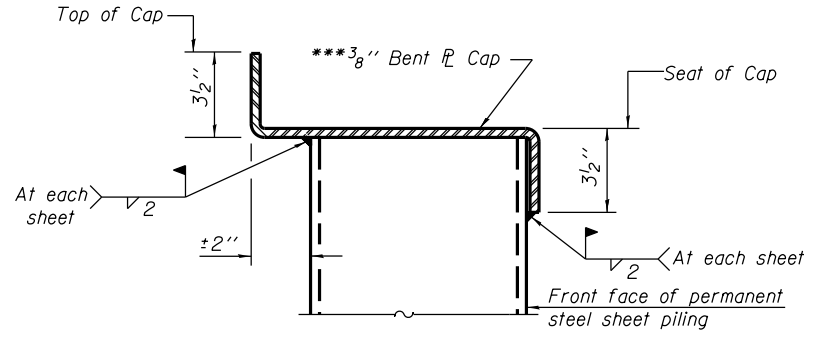
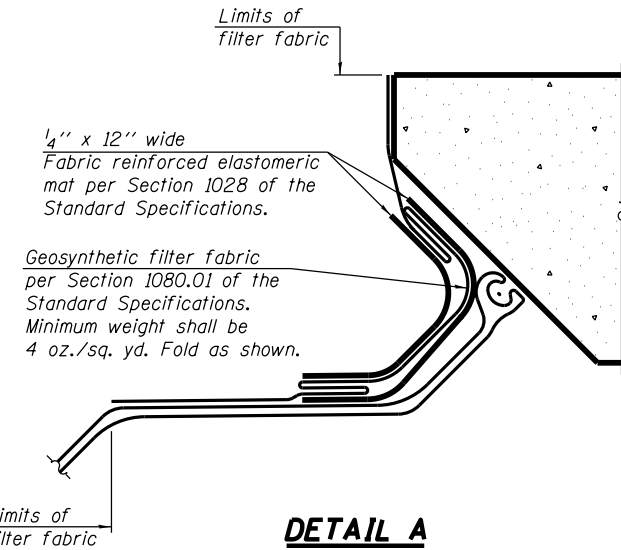
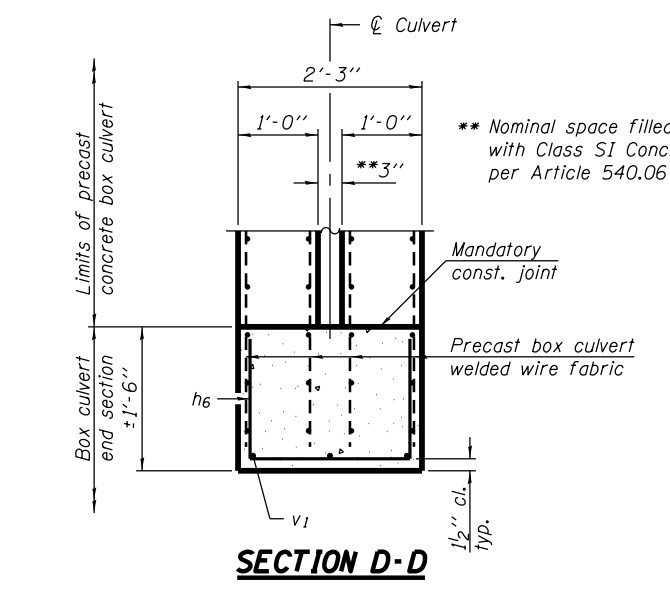
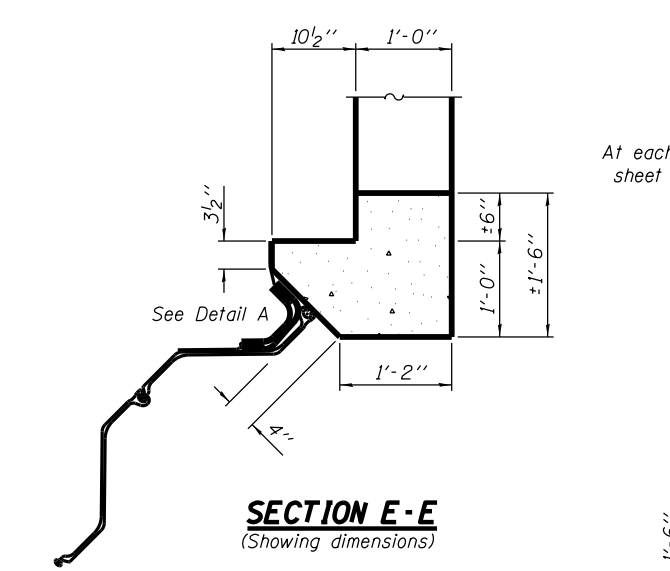
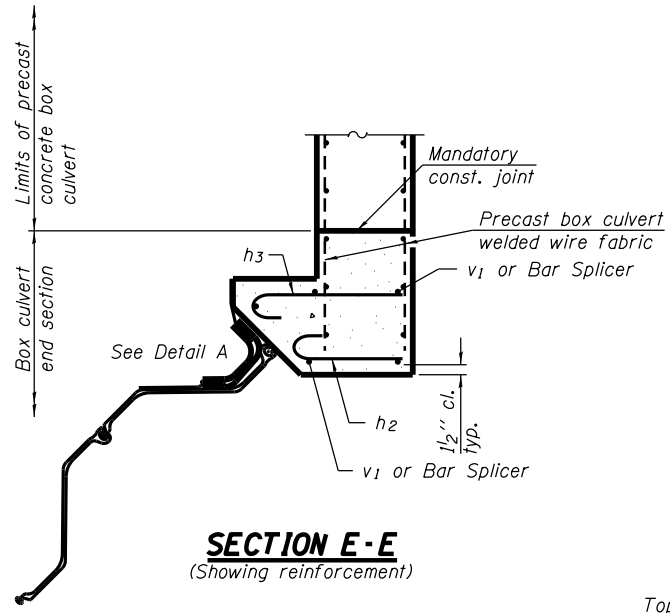
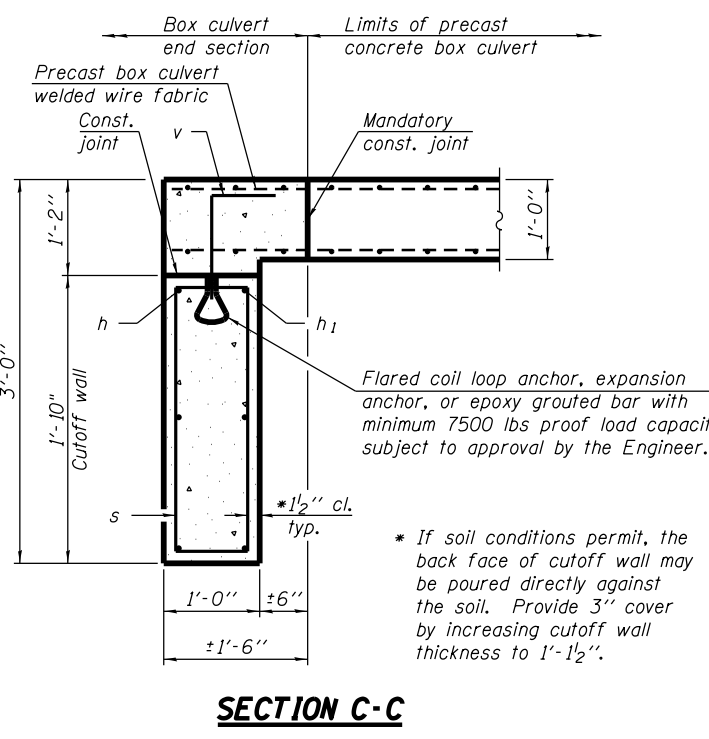
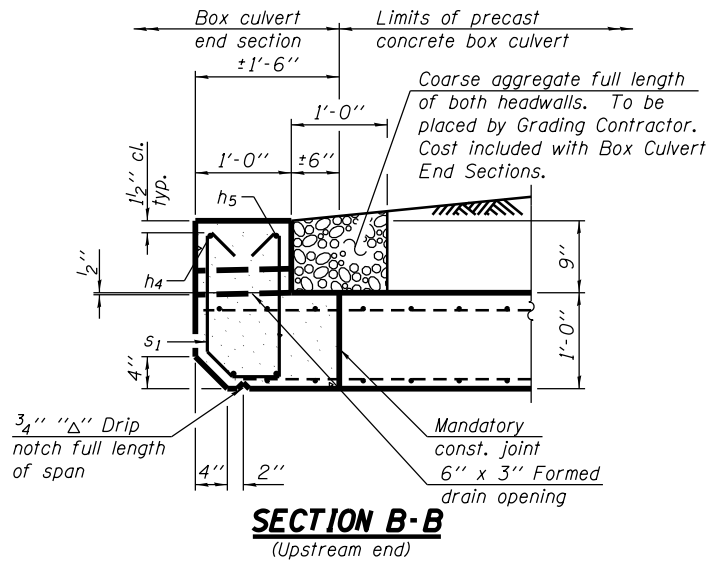
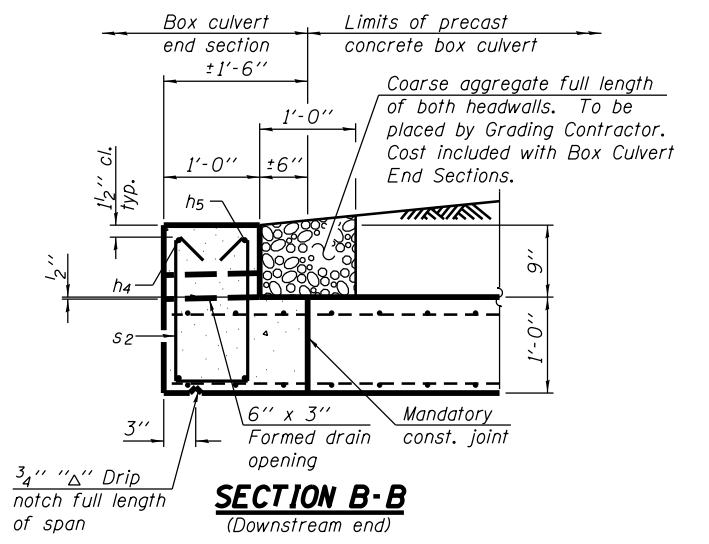
Item	Unit	Total
Culvert End Sections, Culvert No. 1	Each	2



DRAIN DETAIL

Provide 3" φ drain holes in exterior walls at ±8' cts. See Article 503.11 of the Standard Specifications.

FILE NAME =	USER NAME =	DESIGNED - CJB	REVISIONS	STATE OF ILLINOIS DEPARTMENT OF TRANSPORTATION	BOX CULVERT END SECTION DETAILS STRUCTURE NO. 038-2026	F.A.P. RTE. 840	SECTION 137-BR	COUNTY IROQUOIS	TOTAL SHEETS 24	SHEET NO. 15	
	PLOT SCALE =	DRAWN - CCF	REVISIONS			CONTRACT NO. 66B92					
	PLOT DATE =	CHECKED - CJB	REVISIONS			SHEET NO. 2 OF 5 SHEETS					
ILLINOIS FED. AID PROJECT											



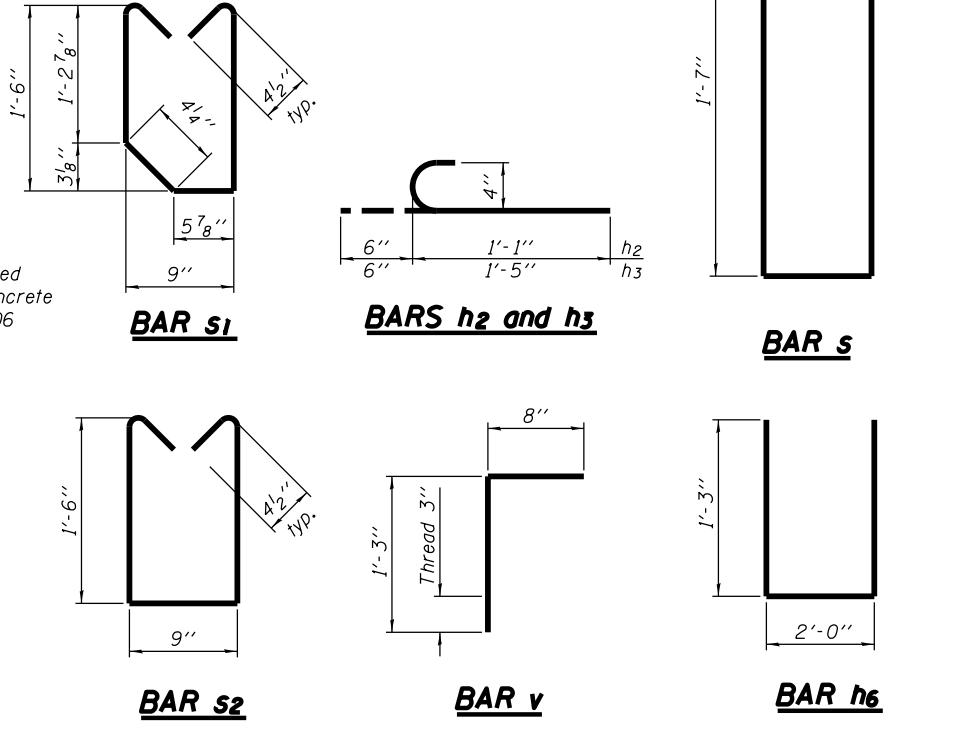
ONE END SECTION BILL OF MATERIAL

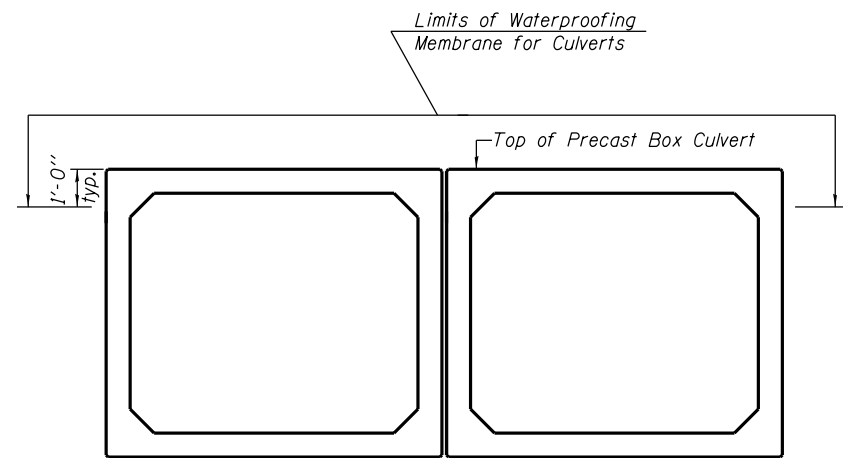
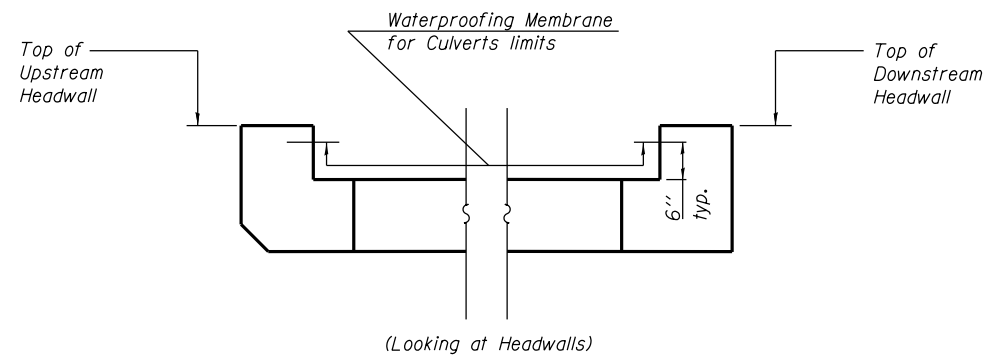
(For information only)

Bar	No.	Size	Length	Shape
h	3	#5	28'-4"	—
h1	3	#5	29'-9"	—
h2	30	#4	1'-7"	C
h3	30	#4	1'-11"	C
h4	2	#6	28'-4"	—
h5	2	#6	29'-9"	—
h6	10	#4	4'-6"	U
s	27	#4	5'-5"	□
s1	27	#4	4'-4"	□
s2	27	#4	4'-6"	□
v	27	#5	1'-11"	J
v1	13	#5	11'-6"	—
Concrete Box Culverts		Cu. Yd.		9.1
Reinforcement Bars		Pound		850
Bar Splicers		Each		10
Permanent Steel Sheet Piling		Sq. Ft.		956

The cost of the fabricated steel cap, bolts, washers, geosynthetic filter fabric, and elastomeric mat shall be included in the cost of Box Culvert End Sections, Culvert No. 1.

**** s1 bar is to be placed on upstream end only. s2 bar is to be placed on downstream end only.



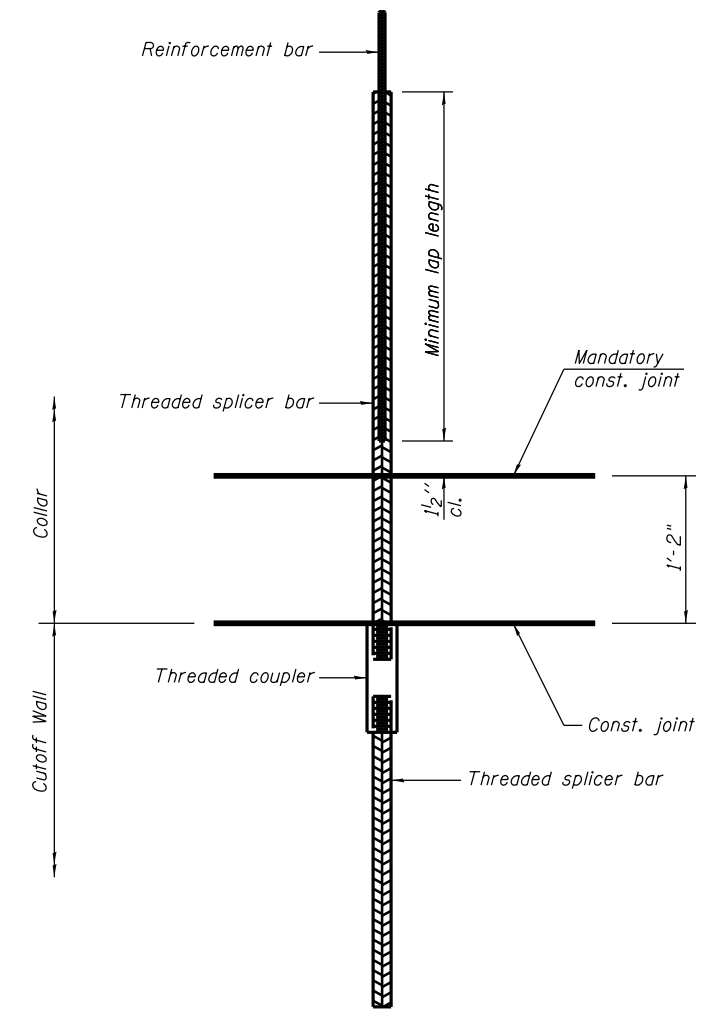


**LIMITS OF
WATERPROOFING MEMBRANE
FOR CULVERTS**

Note: Waterproofing Membrane for Culverts shall cover top of the top slab, top one foot of side walls, and 6 inches up inside face of the headwalls.

NOTES

Splicer bars shall be deformed with threaded ends and have a minimum 60 ksi yield strength.
All reinforcement shall be lapped and tied to the splicer bars.
See approved list of bar splicer assemblies and mechanical splicers for alternatives.



BAR SPLICER ASSEMBLY FOR BOX CULVERT END SECTIONS

Bar size to be spliced	Minimum Lap Lengths					
	Table 1	Table 2	Table 3	Table 4	Table 5	Table 6
3, 4	1'-5"	1'-11"	2'-1"	2'-4"	2'-7"	2'-11"
5	1'-9"	2'-5"	2'-7"	2'-11"	3'-3"	3'-8"
6	2'-1"	2'-11"	3'-1"	3'-6"	3'-10"	4'-5"
7	2'-9"	3'-10"	4'-2"	4'-8"	5'-2"	5'-10"
8	3'-8"	5'-1"	5'-5"	6'-2"	6'-9"	7'-8"
9	4'-7"	6'-5"	6'-10"	7'-9"	8'-7"	9'-8"

Table 1: Black bar, 0.8 Class C
Table 2: Black bar, Top bar lap, 0.8 Class C
Table 3: Epoxy bar, 0.8 Class C
Table 4: Epoxy bar, Top bar lap, 0.8 Class C
Table 5: Epoxy bar, Class C
Table 6: Epoxy bar, Top bar top, Class C

Threaded splicer bar length = min. lap length + 1/2" + thread length

Location	Bar size	No. assemblies required	Table for minimum lap length
* Cutoff Wall	5	10	1

* For one end section



Illinois Department of Transportation
Division of Highways
Illinois DOT

SOIL BORING LOG

Page 1 of 1

Date 12/11/12

ROUTE FAP 840 (IL 49) DESCRIPTION IL 49 over a drainage ditch, 0.48 miles north of US 24 at Crescent City LOGGED BY Larry Myers

SECTION 137-BR LOCATION SW 1/4, SEC. 32, TWP. 27N, RNG. 13W, 3rd PM

COUNTY Iroquois DRILLING METHOD Hollow Stem Auger HAMMER TYPE CME Automatic

STRUCT. NO. Station	BORING NO. Station	OFFSET ft	GROUND SURFACE ELEV. ft	DEPTH		FIRST ENCOUNTER ft	UPON COMPLETION ft	AFTER Hrs	BULK SAMPLES		SPT VALUE	
				(ft)	(ft)				(ft)	(ft)	(blows)	(blows)
038-0119 (Exist) 1224+00	1 (SE Quad) 1224+28	15.00ft Lt.	634.91									
				5	5							
				7	7						4.8	19.9
				9	9						S	
			632.41									
				4	4							
				3	3							
				4	4							
				2	2							
				3	3							
			625.91									
				2	2							
				3	3							
				2	2							
				3	3							
			622.91									
				4	4							
				5	5							
				7	7							
			617.91									
				4	4							
				5	5							
				6	6							
			615.41									
				7	7							

The Unconfined Compressive Strength (UCS) Failure Mode is indicated by (B-Bulge, S-Shear, P-Penetrometer)
The SPT (N value) is the sum of the last two blow values in each sampling zone (AASHTO T206)
BBS, form 137 (Rev. 8-99)



Illinois Department of Transportation
Division of Highways
Illinois DOT

SOIL BORING LOG

Page 1 of 1

Date 12/11/12

ROUTE FAP 840 (IL 49) DESCRIPTION IL 49 over a drainage ditch, 0.48 miles north of US 24 at Crescent City LOGGED BY Larry Myers

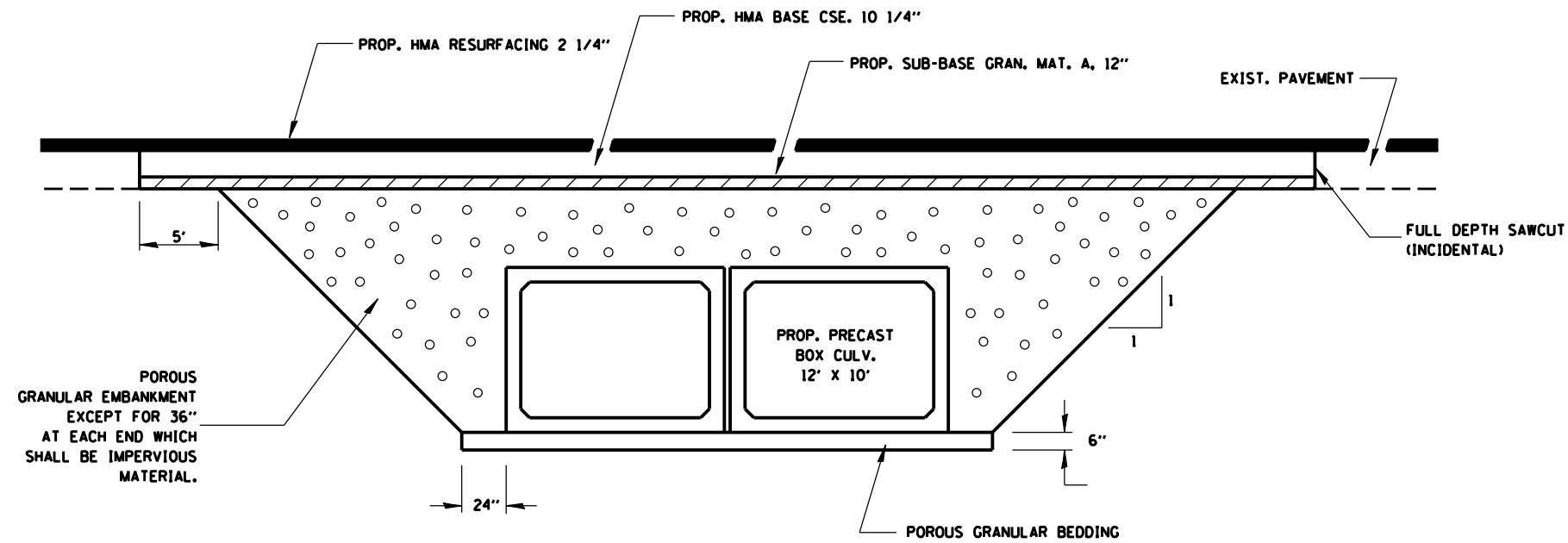
SECTION 137-BR LOCATION SE 1/4, SEC. 31, TWP. 27N, RNG. 13W, 3rd PM

COUNTY Iroquois DRILLING METHOD Hollow Stem Auger HAMMER TYPE CME Automatic

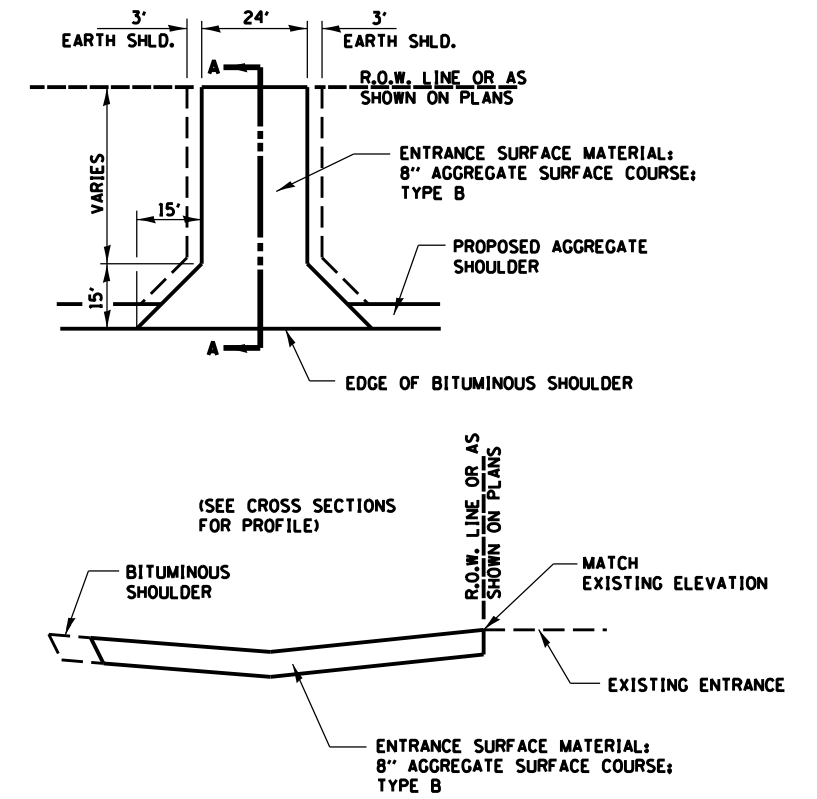
STRUCT. NO. Station	BORING NO. Station	OFFSET ft	GROUND SURFACE ELEV. ft	DEPTH		FIRST ENCOUNTER ft	UPON COMPLETION ft	AFTER Hrs	BULK SAMPLES		SPT VALUE	
				(ft)	(ft)				(ft)	(ft)	(blows)	(blows)
038-0119 (Exist) 1224+00	2 (NW Quad) 1223+70	15.00ft Rt.	634.98									
				5	5							
				7	7						4.8	19.9
				9	9						S	
			632.48									
				4	4							
				3	3							
				4	4							
			630.48									
				3	3							
				4	4							
				3	3							
			627.98									
				2	2							
				3	3							
				4	4							
			622.98									
				3	3							
				4	4							
				5	5							
			617.98									
				4	4							
				5	5							
				7	7							
			617.98									
				3	3							
				4	4							
				6	6							
			598.48									
				3	3							
				4	4							
				5	5							
				6	6							
				8	8							

The Unconfined Compressive Strength (UCS) Failure Mode is indicated by (B-Bulge, S-Shear, P-Penetrometer)
The SPT (N value) is the sum of the last two blow values in each sampling zone (AASHTO T206)
BBS, form 137 (Rev. 8-99)

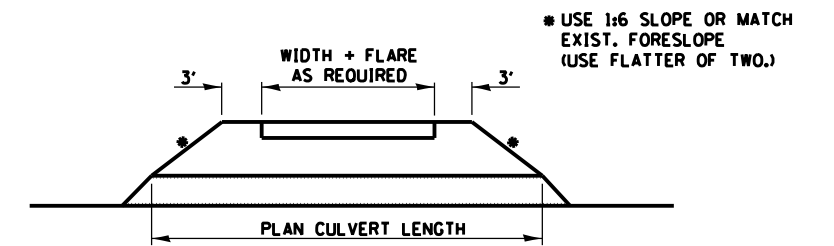
FILE NAME =	USER NAME =	DESIGNED - CJB	REVISED _____	STATE OF ILLINOIS DEPARTMENT OF TRANSPORTATION	SOIL BORING LOGS STRUCTURE NO. 038-2026	SHEET NO. 5 OF 5 SHEETS	F.A.P. RTE. 840	SECTION 137-BR	COUNTY IROQUOIS	TOTAL SHEETS 24	SHEET NO. 18
	PLOT SCALE =	DRAWN - CCF	REVISED _____				CONTRACT NO. 66B92				
	PLOT DATE =	CHECKED - CJB	REVISED _____				ILLINOIS FED. AID PROJECT				



SECTION THROUGH PRECAST BOX CULVERT

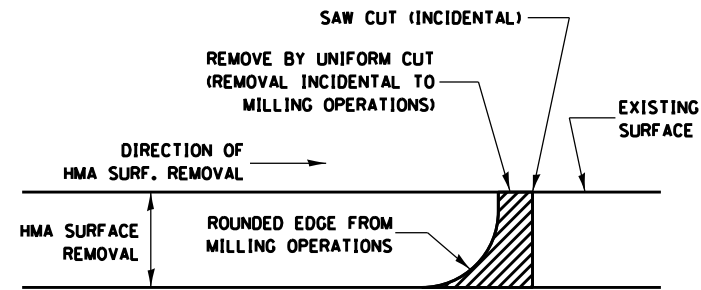


SECTION A-A



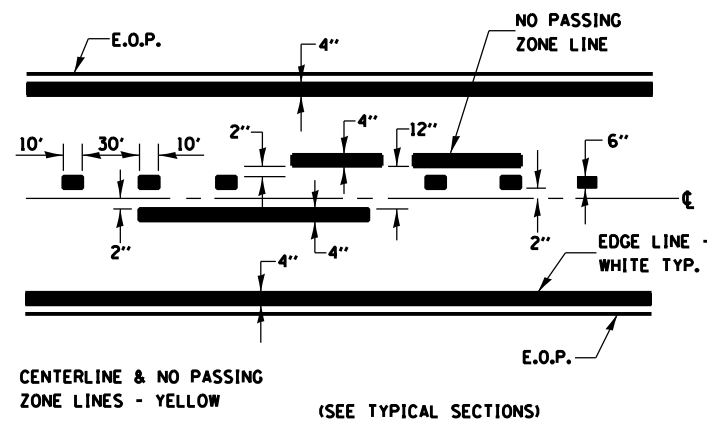
FIELD ENTRANCE DETAIL

FILE NAME =	USER NAME = mcfaddenka	DESIGNED -	REVISED -	STATE OF ILLINOIS DEPARTMENT OF TRANSPORTATION	DETAILS			F.A.P. RTE.	SECTION	COUNTY	TOTAL SHEETS	SHEET NO.
ca:\pwork\work\pwork\mcfaddenka\02288918\0366892-sht-details.dgn		DRAWN -	REVISED -					840	137-BR	IRROUOIS	24	19
PLOT SCALE = 100.0000' / 1" =		CHECKED -	REVISED -		SCALE: SHEET NO. OF SHEETS STA. TO STA.			CONTRACT NO. 66892				
PLOT DATE = 8/12/2014		DATE -	REVISED -		ILLINOIS FED. AID PROJECT							

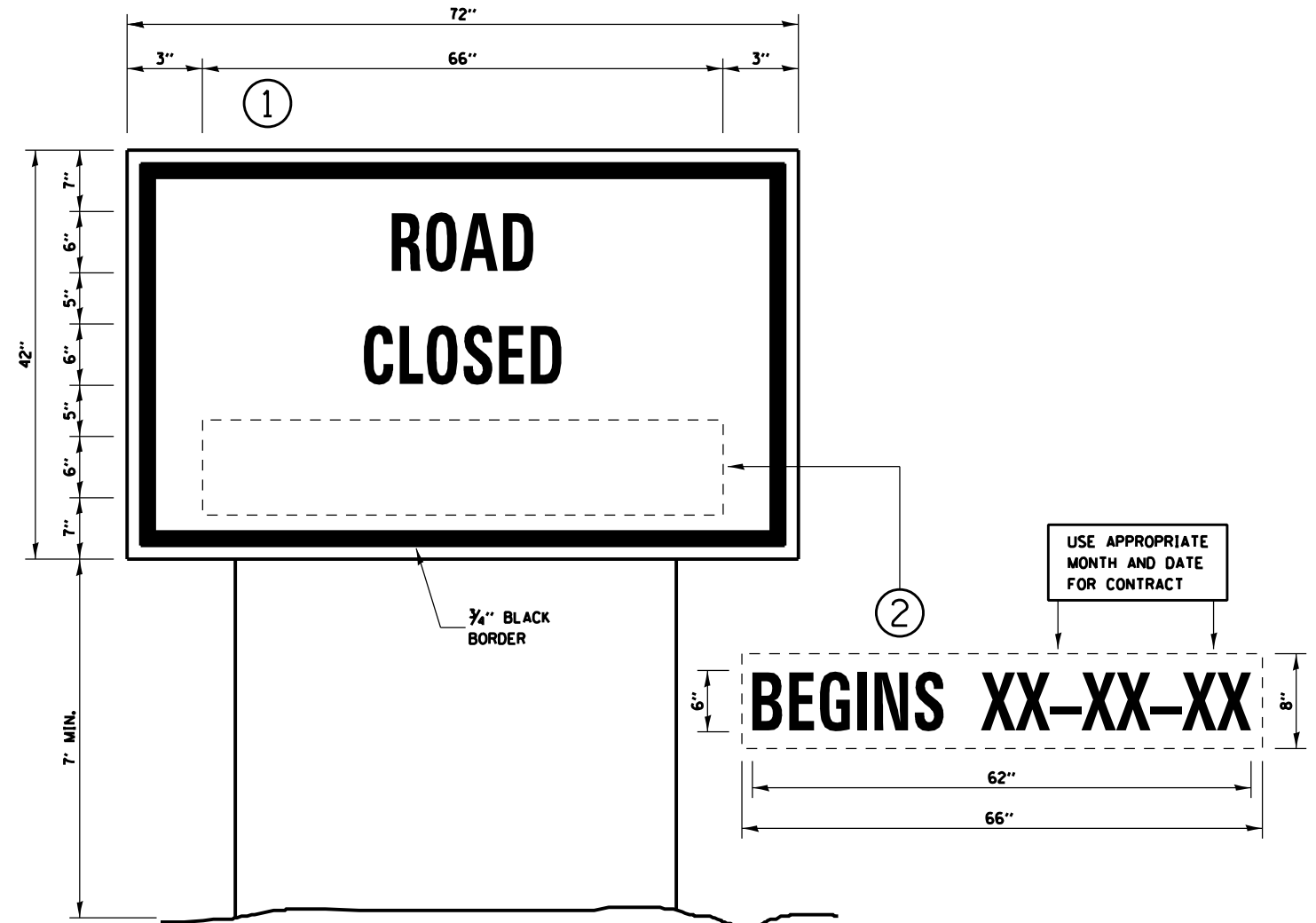


NOTE:
 WHEN MILLING OPERATIONS PRODUCE A ROUNDED EDGE, THEN A SAW CUT SHALL BE USED TO MANUFACTURE A PERPENDICULAR EDGE AS SHOWN IN THE DETAIL. THE ENGINEER SHALL BE THE SOLE JUDGE CONCERNING THE USE OF THIS DETAIL

HMA DETAIL AT BUTT JOINTS



PAVEMENT MARKING



TEMPORARY INFORMATION SIGNING

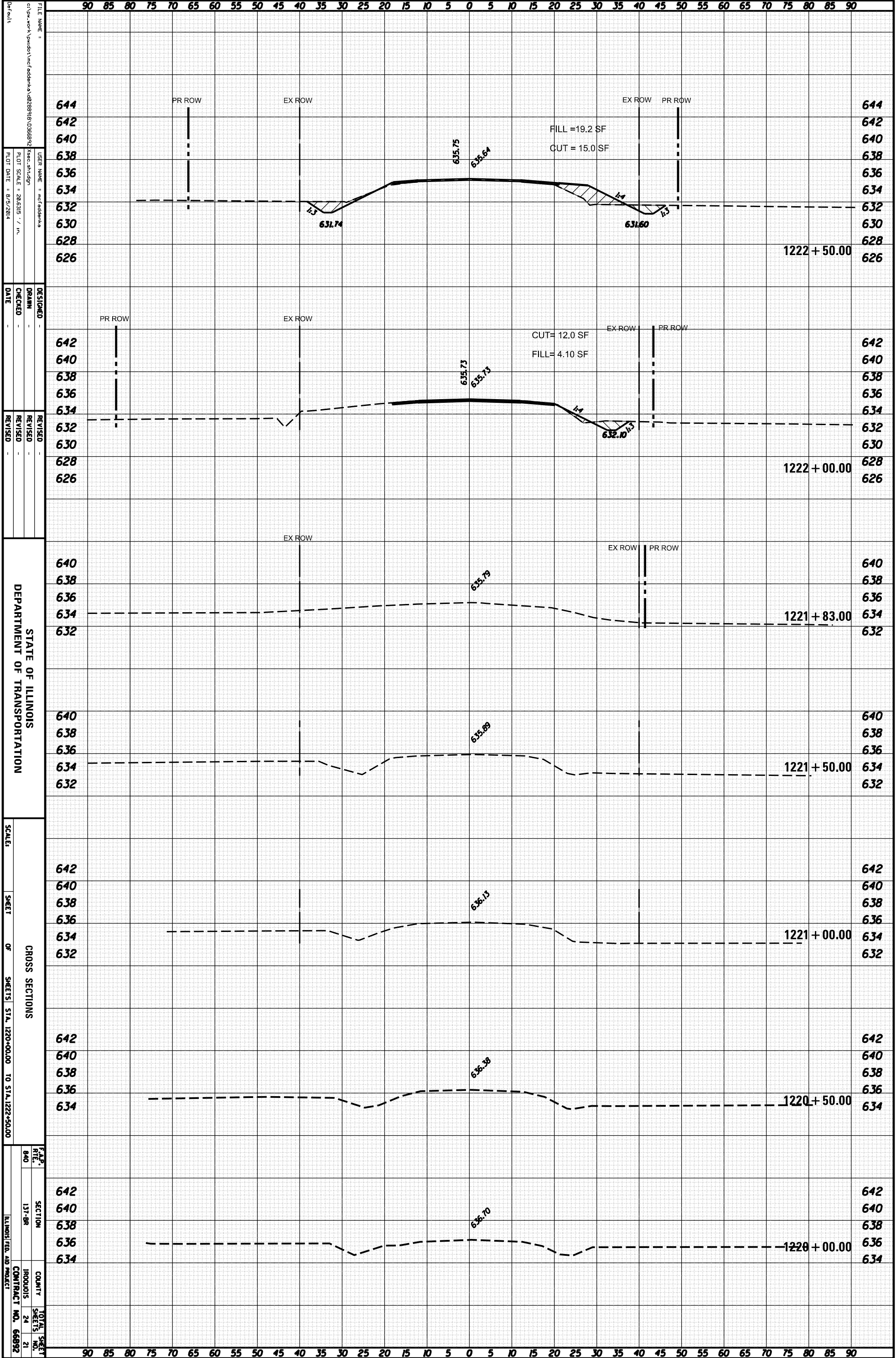
NOTES:

1. USE 6" D BLACK LETTERING ON FLOURESENT ORANGE BACKGROUND.
2. ERECT SIGNS AT LOCATIONS IN ADVANCE OF THE "ROAD CONSTRUCTION AHEAD" SIGNS AS DIRECTED BY THE ENGINEER.
3. ERECT SIGN ① WITH INSTALLED PANEL ② A MINIMUM OF ONE WEEK PRIOR TO THE START OF THE ROAD CLOSURE.
4. REMOVE PANEL ② ON THAT DATE.
5. SEE SPECIAL PROVISION "TEMPORARY INFORMATION SIGNING" FOR ADDITIONAL INFORMATION.
6. WILL BE PAID FOR PER 50 FT AS "TEMPORARY INFORMATION SIGNING". EACH SIGN = 21 50 FT AND THE DATE PANEL ② WILL NOT BE MEASURED SEPARATELY FOR PAYMENT.

FILE NAME =	USER NAME = mcfaddenka	DESIGNED -	REVISED -	STATE OF ILLINOIS DEPARTMENT OF TRANSPORTATION	DETAILS			F.A.P. RTE.	SECTION	COUNTY	TOTAL SHEETS	SHEET NO.
ca:\pwork\pwork\mcfaddenka\0288918\0366892-sht-details.dgn	DRAWN -	REVISED -	840					137-BR	IROOJOIS	24	20	
PLOT SCALE = 100.0000' / 1"	CHECKED -	REVISED -	CONTRACT NO. 66892									
PLOT DATE = 8/12/2014	DATE -	REVISED -	ILLINOIS FED. AID PROJECT									
				SCALE:	SHEET NO.	OF	SHEETS	STA.	TO	STA.		

ORIGINAL SURVEY	SURVEYED	BY	DATE
NOTE BOOK	PLOTTED		
NO.	TEMPLATE		
	AREAS		
	AREAS CHECKED		

FINAL SURVEY	SURVEYED	BY	DATE
NOTE BOOK	PLOTTED		
NO.	TEMPLATE		
	AREAS		
	AREAS CHECKED		



FILE NAME : c:\work\panda\work\panda\02289819\036899\36899.dwg
 USER NAME : mcfadden
 PLOT SCALE : 20/6316' / in.
 PLOT DATE : 8/5/2014

DESIGNED :
 DRAWN :
 CHECKED :
 DATE :

REVISOR :
 REVISION :
 DATE :

STATE OF ILLINOIS
 DEPARTMENT OF TRANSPORTATION

SCALE:
 SHEET OF SHEETS STA. 1220+00.00 TO STA. 1222+50.00

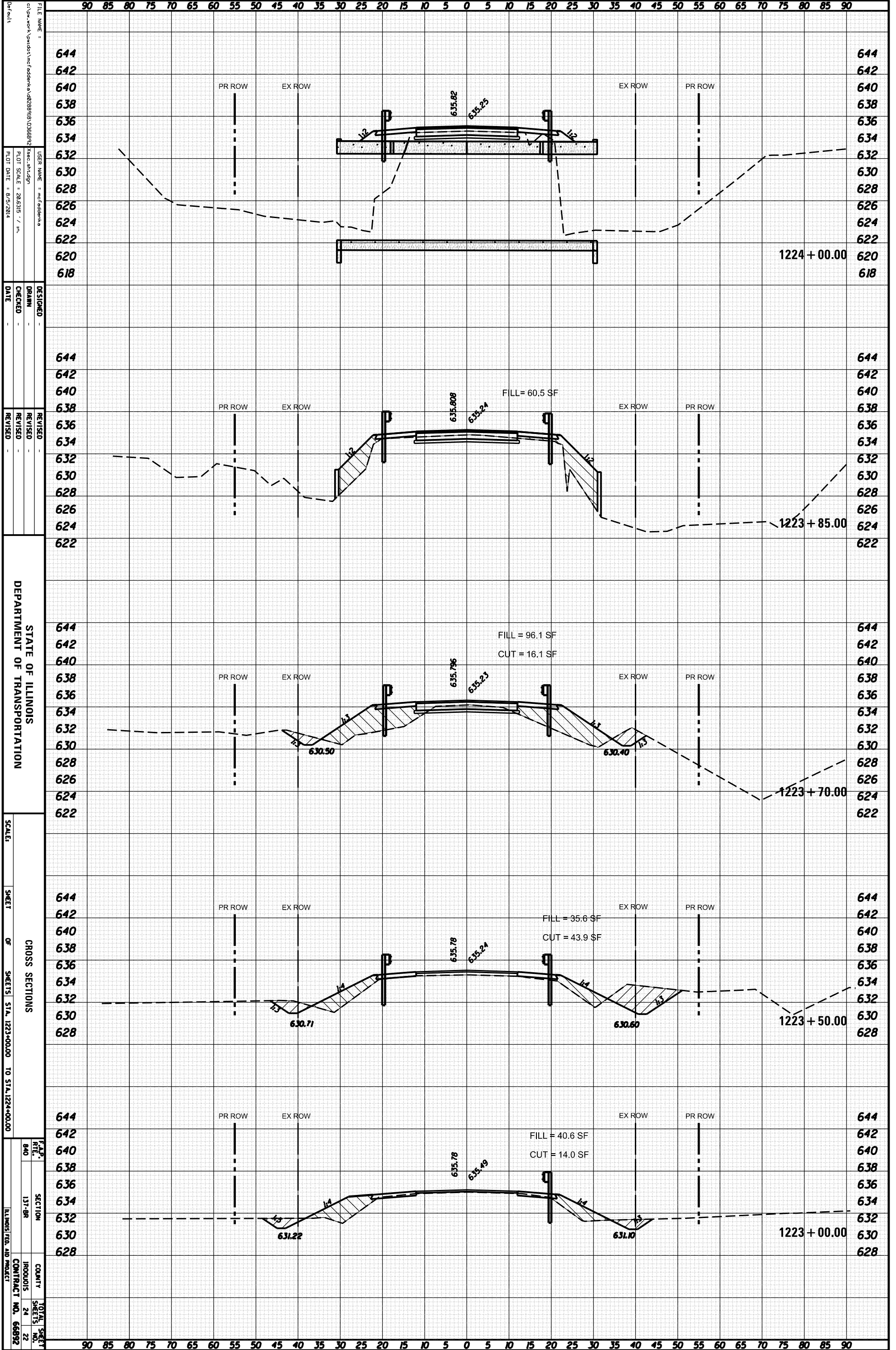
CROSS SECTIONS

SECTION 131-98
 COUNTY IROQUOIS
 CONTRACT NO. 66892

TOTAL SHEETS 24
 SHEET NO. 21

ORIGINAL SURVEY	SURVEYED	BY	DATE
NOTE BOOK	PLOTTED		
NO.	TEMPLATE		
	AREAS		
	AREAS CHECKED		

FINAL SURVEY	SURVEYED	BY	DATE
NOTE BOOK	PLOTTED		
NO.	TEMPLATE		
	AREAS		
	AREAS CHECKED		



FILE NAME :
 USER NAME :
 DRAWN :
 CHECKED :
 DATE :
 DESIGNED :
 REVISED :
 REVISED :
 REVISED :
 DEPARTMENT OF TRANSPORTATION
 SCALE:
 SHEET OF SHEETS STA. 1223+00.00 TO STA. 1224+00.00
 CROSS SECTIONS
 SECTION 131-98
 COUNTY IROQUOIS
 CONTRACT NO. 66892

90 85 80 75 70 65 60 55 50 45 40 35 30 25 20 15 10 5 0 5 10 15 20 25 30 35 40 45 50 55 60 65 70 75 80 85 90

644 644
 642 642
 640 640
 638 638
 636 636
 634 634
 632 632
 630 630
 628 628
 626 626
 624 624
 622 622

PR ROW EX ROW EX ROW PR ROW

1224+00.00

644 644
 642 642
 640 640
 638 638
 636 636
 634 634
 632 632
 630 630
 628 628
 626 626
 624 624
 622 622

PR ROW EX ROW EX ROW PR ROW

FILL = 60.5 SF

1223+85.00

644 644
 642 642
 640 640
 638 638
 636 636
 634 634
 632 632
 630 630
 628 628
 626 626
 624 624
 622 622

PR ROW EX ROW EX ROW PR ROW

FILL = 96.1 SF
 CUT = 16.1 SF

1223+70.00

644 644
 642 642
 640 640
 638 638
 636 636
 634 634
 632 632
 630 630
 628 628

PR ROW EX ROW EX ROW PR ROW

FILL = 35.6 SF
 CUT = 43.9 SF

1223+50.00

644 644
 642 642
 640 640
 638 638
 636 636
 634 634
 632 632
 630 630
 628 628

PR ROW EX ROW EX ROW PR ROW

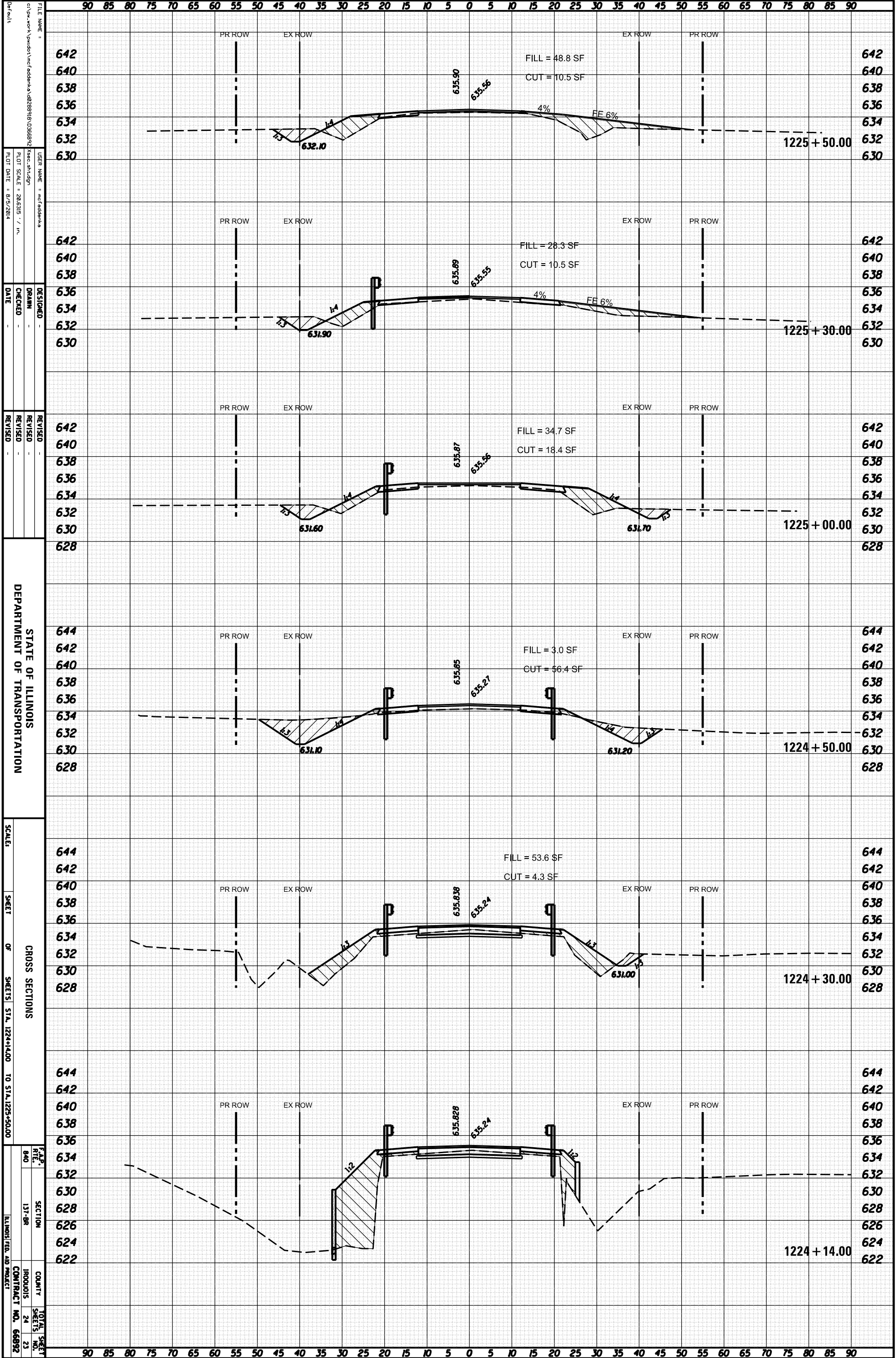
FILL = 40.6 SF
 CUT = 14.0 SF

1223+00.00

90 85 80 75 70 65 60 55 50 45 40 35 30 25 20 15 10 5 0 5 10 15 20 25 30 35 40 45 50 55 60 65 70 75 80 85 90

ORIGINAL SURVEY	SURVEYED	BY	DATE
NOTE BOOK	PLOTTED		
NO.	TEMPLATE		
	AREAS		
	CHECKED		

FINAL SURVEY	SURVEYED	BY	DATE
NOTE BOOK	PLOTTED		
NO.	TEMPLATE		
	AREAS		
	CHECKED		



FILE NAME: c:\work\panda\work\panda\1224+14.00\1224+14.00.dwg
 USER NAME: mcfadden
 PLOT SCALE: 20/6316' / in.
 PLOT DATE: 8/5/2014
 DESIGNED: [blank]
 DRAWN: [blank]
 CHECKED: [blank]
 DATE: [blank]
 REVISED: [blank]
 REVISED: [blank]
 REVISED: [blank]
 REVISED: [blank]
 REVISED: [blank]

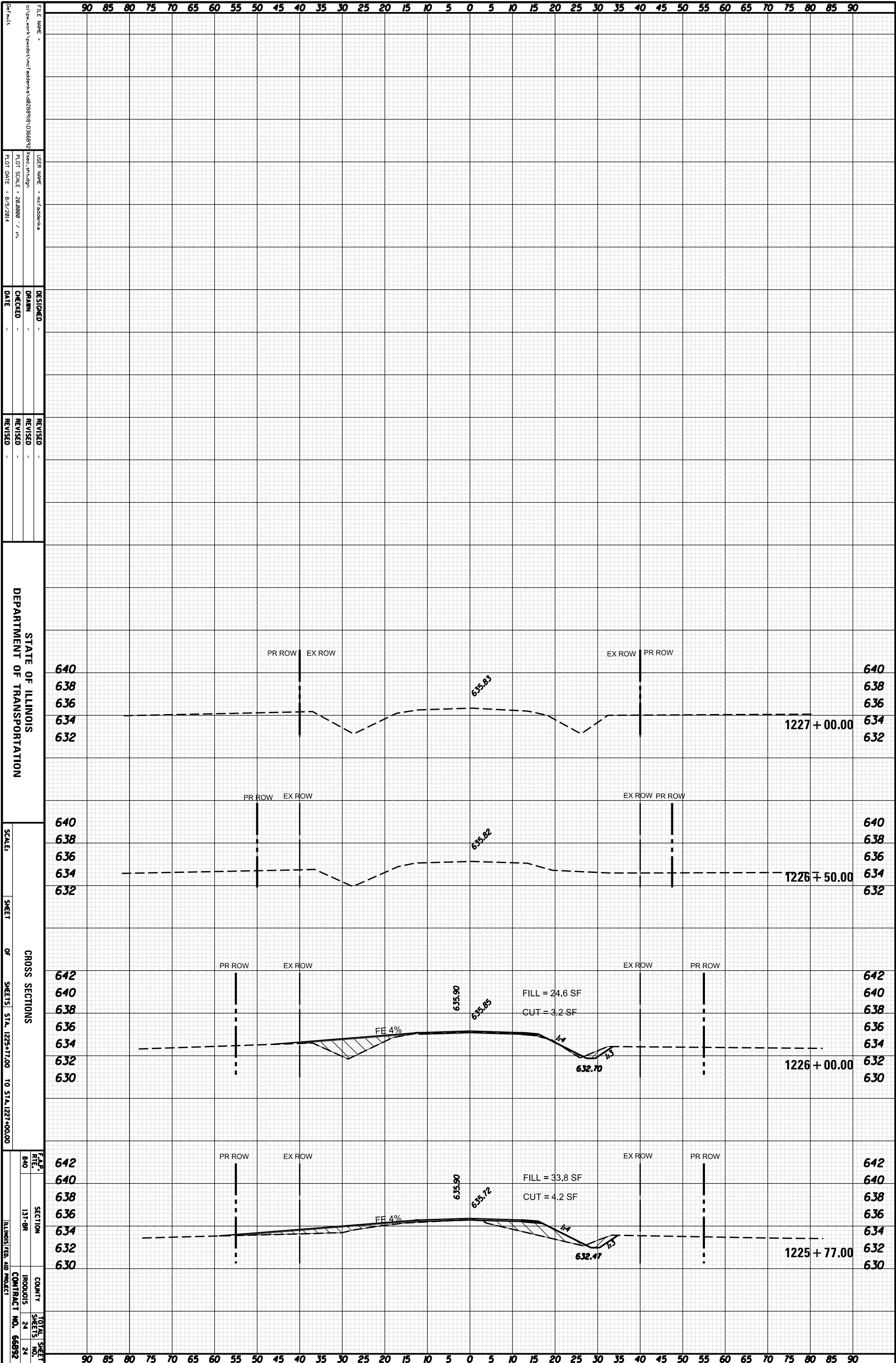
STATE OF ILLINOIS
 DEPARTMENT OF TRANSPORTATION

CROSS SECTIONS
 SCALE: [blank]
 SHEET OF SHEETS STA. 1224+14.00 TO STA. 1225+50.00

SECTION 131-98
 COUNTY IROQUOIS
 CONTRACT NO. 66892
 TOTAL SHEETS 24
 SHEET NO. 23

ORIGINAL SURVEY	SURVEYED	BY	DATE
NOTE BOOK	PLOTTED		
	TEMPLATE		
	AREAS		
	CHECKED		

FINAL SURVEY	SURVEYED	BY	DATE
NOTE BOOK	PLOTTED		
	TEMPLATE		
	AREAS		
	CHECKED		



STATE OF ILLINOIS
DEPARTMENT OF TRANSPORTATION

CROSS SECTIONS
SHEETS STA. 1225+77.00 TO STA. 1227+00.00

SECTION 137-BR
COUNTY IROQUOIS
CONTRACT NO. 66892

FILE NAME: c:\pwwork\pwwork\mcfadden\1226\1226.dwg
USER NAME: mcfadden
PLOT SCALE: 28.0000 / in.
PLOT DATE: 8/5/2014

DESIGNED BY: DRANN
CHECKED BY: [blank]
DATE: [blank]

REVISIONS

640
638
636
634
632

640
638
636
634
632

642
640
638
636
634
632
630

642
640
638
636
634
632
630

640
638
636
634
632
640
638
636
634
632
642
640
638
636
634
632
630
642
640
638
636
634
632
630

1227 + 00.00

1226 + 50.00

1226 + 00.00

1225 + 77.00

FILL = 24.6 SF
CUT = 3.2 SF

FILL = 33.8 SF
CUT = 4.2 SF

FE 4%

FE 4%

635.83

635.82

635.90

635.85

635.90

635.72

632.70

632.47

PR ROW EX ROW

EX ROW PR ROW

PR ROW EX ROW

EX ROW PR ROW

PR ROW EX ROW

EX ROW PR ROW

PR ROW EX ROW

EX ROW PR ROW