

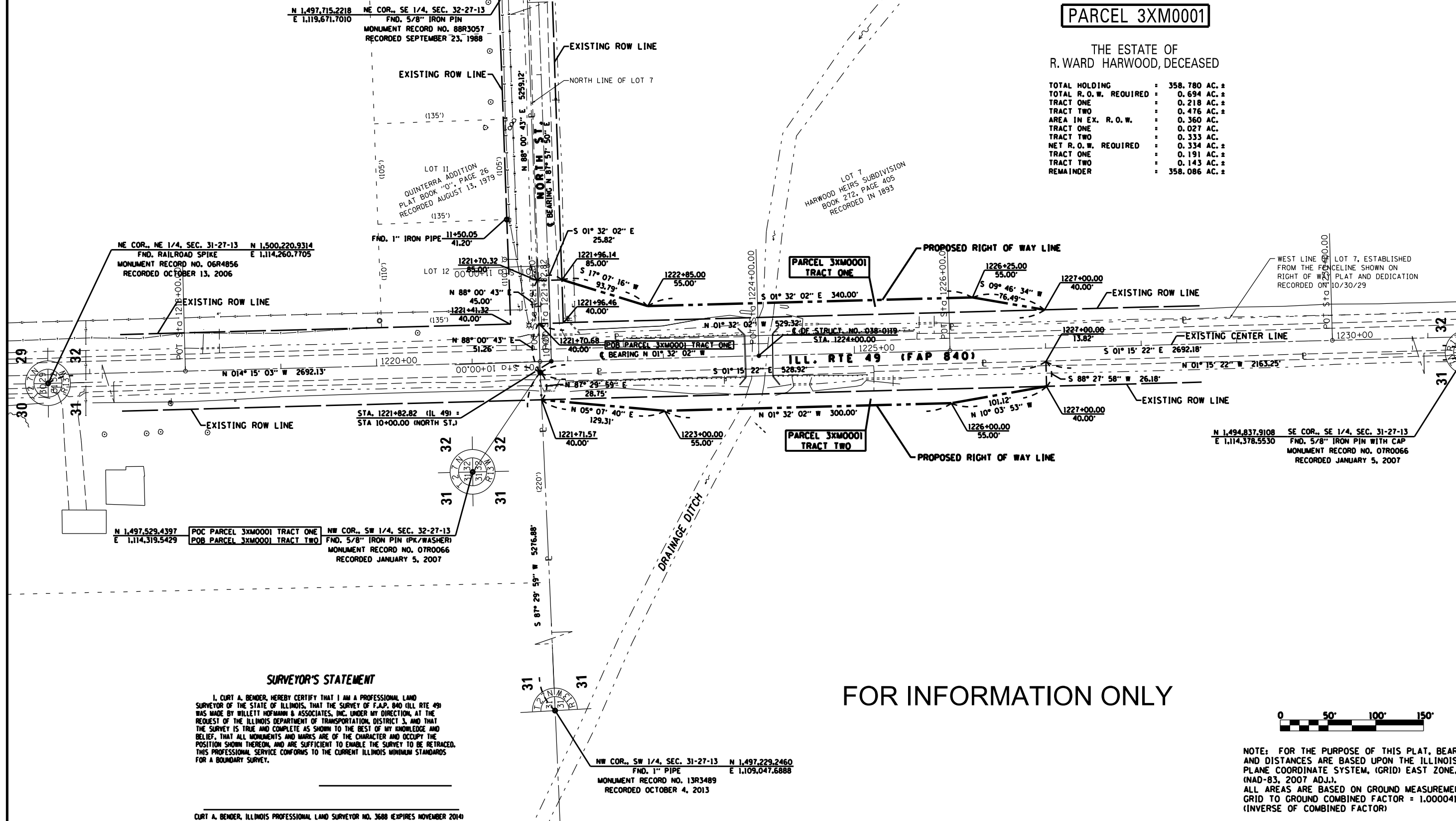
SEC. 31 & 32, T. 27 N., R. 13 W., 2ND P.M.
CRESCENT CITY, ILLINOIS



PARCEL 3XM0001

THE ESTATE OF
R. WARD HARWOOD, DECEASED

TOTAL HOLDING	=	358.780 AC. ±
TOTAL R.O.W. REQUIRED	=	0.694 AC. ±
TRACT ONE	=	0.218 AC. ±
TRACT TWO	=	0.476 AC. ±
AREA IN EX. R.O.W.	=	0.360 AC.
TRACT ONE	=	0.027 AC.
TRACT TWO	=	0.333 AC.
NET R.O.W. REQUIRED	=	0.334 AC. ±
TRACT ONE	=	0.191 AC. ±
TRACT TWO	=	0.143 AC. ±
REMAINDER	=	358.086 AC. ±



SURVEYOR'S STATEMENT

I, CURT A. BENDER, HEREBY CERTIFY THAT I AM A PROFESSIONAL LAND SURVEYOR OF THE STATE OF ILLINOIS, THAT THE SURVEY OF F.A.P. 840 (ILL. RTE 49) WAS MADE BY WILLET HOFMANN & ASSOCIATES, INC. UNDER MY DIRECTION, AT THE REQUEST OF THE ILLINOIS DEPARTMENT OF TRANSPORTATION, DISTRICT 3, AND THAT THE SURVEY IS TRUE AND COMPLETE AS SHOWN TO THE BEST OF MY KNOWLEDGE AND BELIEF, THAT ALL MONUMENTS AND MARKS ARE OF THE CHARACTER AND OCCUPY THE POSITION SHOWN THEREON, AND ARE SUFFICIENT TO ENABLE THE SURVEY TO BE RETRACED. THIS PROFESSIONAL SERVICE CONFORMS TO THE CURRENT ILLINOIS MINIMUM STANDARDS FOR A BOUNDARY SURVEY.

CURT A. BENDER, ILLINOIS PROFESSIONAL LAND SURVEYOR NO. 3688 (EXPIRES NOVEMBER 2014)

FOR INFORMATION ONLY



NOTE: FOR THE PURPOSE OF THIS PLAT, BEARINGS AND DISTANCES ARE BASED UPON THE ILLINOIS STATE PLANE COORDINATE SYSTEM, (GRID) EAST ZONE, (NAD-83, 2007 ADJ.). ALL AREAS ARE BASED ON GROUND MEASUREMENTS GRID TO GROUND COMBINED FACTOR = 1.000041193 (INVERSE OF COMBINED FACTOR)

FILE NAME =	USER NAME = mcfaddenka	DESIGNED -	REVISED -	STATE OF ILLINOIS DEPARTMENT OF TRANSPORTATION	RIGHT OF WAY PLAN			F.A.P. RTE. = 840	SECTION = 137-BR	COUNTY = IROQUOIS	TOTAL SHEETS = 24	SHEET NO. = 10
ca:\pwork\pwork\mcfaddenka\08288918\0366892-sht-details.dgn		DRAWN -	REVISED -		SCALE:	SHEET NO. OF SHEETS	STA. TO STA.	CONTRACT NO. 66892				
PLOT SCALE = 100.0000' / 1"		CHECKED -	REVISED -					ILLINOIS FED. AID PROJECT				
PLOT DATE = 8/12/2014		DATE -	REVISED -									