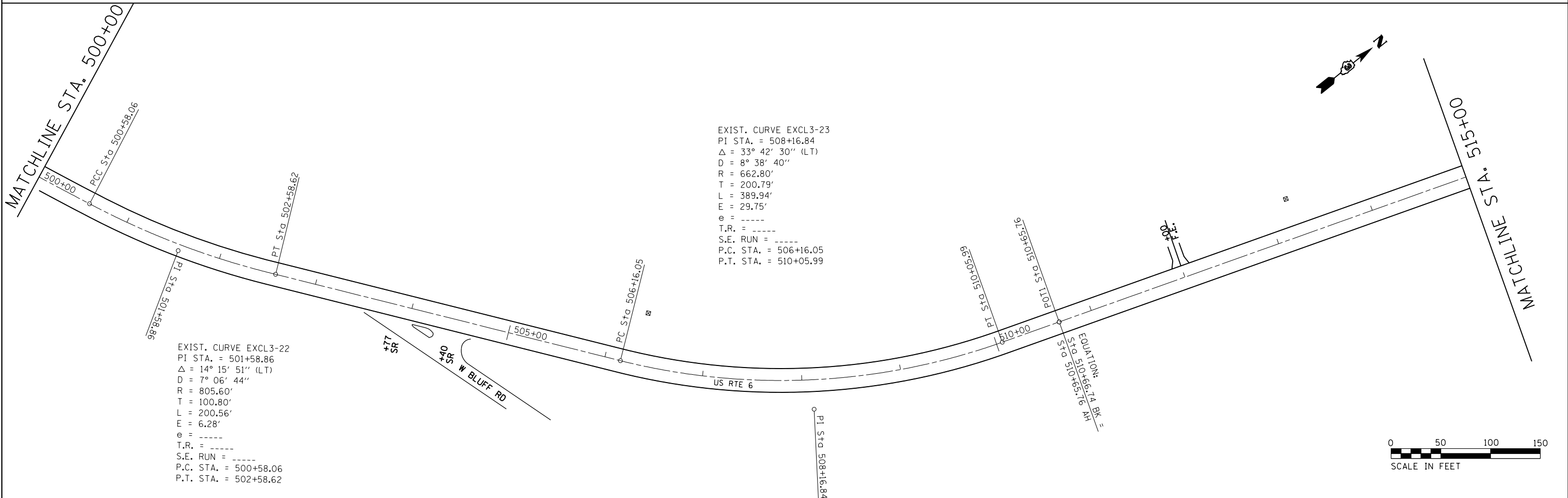


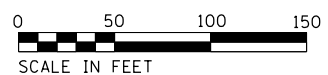
EXIST. CURVE EXCL3-20
 PI STA. = 485+93.13
 $\Delta = 8^\circ 43' 00''$ (RT)
 $D = 2^\circ 10' 56''$
 $R = 2,625.70'$
 $T = 200.12'$
 $L = 399.46'$
 $E = 7.61'$
 $e = \text{-----}$
 $T.R. = \text{-----}$
 $S.E. RUN = \text{-----}$
 $P.C. STA. = 483+93.01$
 $P.T. STA. = 487+92.48$

EXIST. CURVE EXCL3-21
 PI STA. = 498+58.59
 $\Delta = 7^\circ 40' 51''$ (LT)
 $D = 1^\circ 55' 21''$
 $R = 2,980.41'$
 $T = 200.07'$
 $L = 399.53'$
 $E = 6.71'$
 $e = \text{-----}$
 $T.R. = \text{-----}$
 $S.E. RUN = \text{-----}$
 $P.C. STA. = 496+58.52$
 $P.T. STA. = 500+58.06$



EXIST. CURVE EXCL3-22
 PI STA. = 501+58.86
 $\Delta = 14^\circ 15' 51''$ (LT)
 $D = 7^\circ 06' 44''$
 $R = 805.60'$
 $T = 100.80'$
 $L = 200.56'$
 $E = 6.28'$
 $e = \text{-----}$
 $T.R. = \text{-----}$
 $S.E. RUN = \text{-----}$
 $P.C. STA. = 500+58.06$
 $P.T. STA. = 502+58.62$

EXIST. CURVE EXCL3-23
 PI STA. = 508+16.84
 $\Delta = 33^\circ 42' 30''$ (LT)
 $D = 8^\circ 38' 40''$
 $R = 662.80'$
 $T = 200.79'$
 $L = 389.94'$
 $E = 29.75'$
 $e = \text{-----}$
 $T.R. = \text{-----}$
 $S.E. RUN = \text{-----}$
 $P.C. STA. = 506+16.05$
 $P.T. STA. = 510+05.99$



FILE NAME =	USER NAME = duncanbd	DESIGNED -	REVISED -
c:\pwork\pwork\duncanbd\0288157\0368891-sht-2plan.dgn		DRAWN -	REVISED -
Default	PLOT SCALE = 100.0000' / in.	CHECKED -	REVISED -
	PLOT DATE = 6/27/2014	DATE -	REVISED -

**STATE OF ILLINOIS
 DEPARTMENT OF TRANSPORTATION**

PLAN VIEW

SCALE: 1:50 SHEET 14 OF 18 SHEETS STA. 485+00 TO STA. 515+00

F.A.P. RTE.	SECTION	COUNTY	TOTAL SHEETS	SHEET NO.
623	(G,H,I)RS-3	LAS-GRU	36	30
CONTRACT NO. 66B91				
ILLINOIS FED. AID PROJECT				