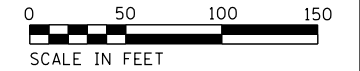
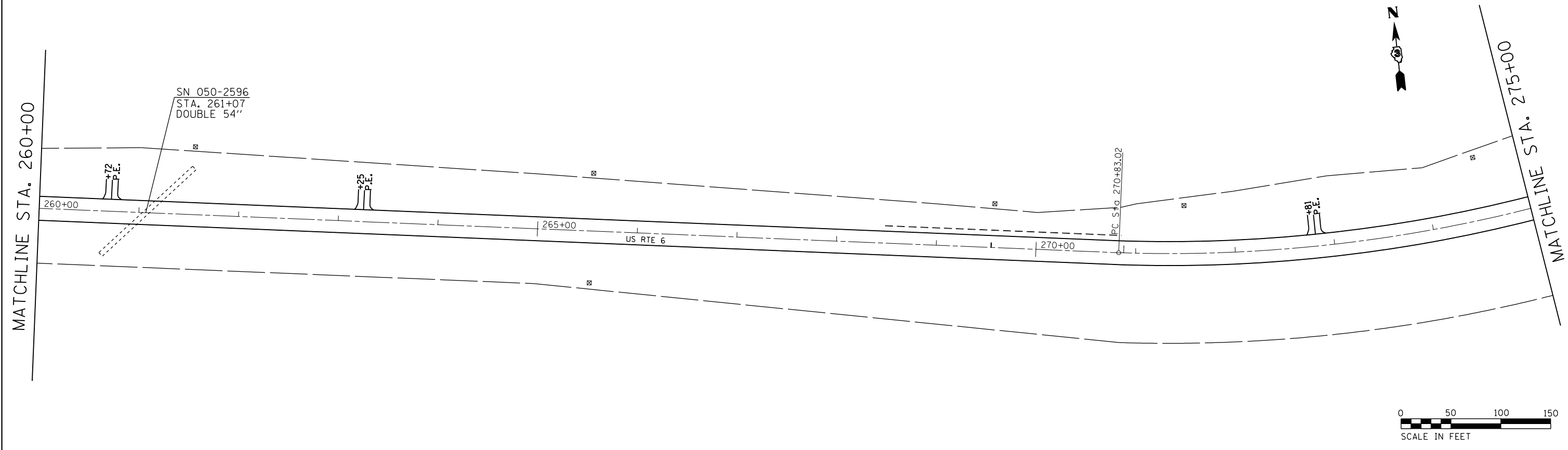
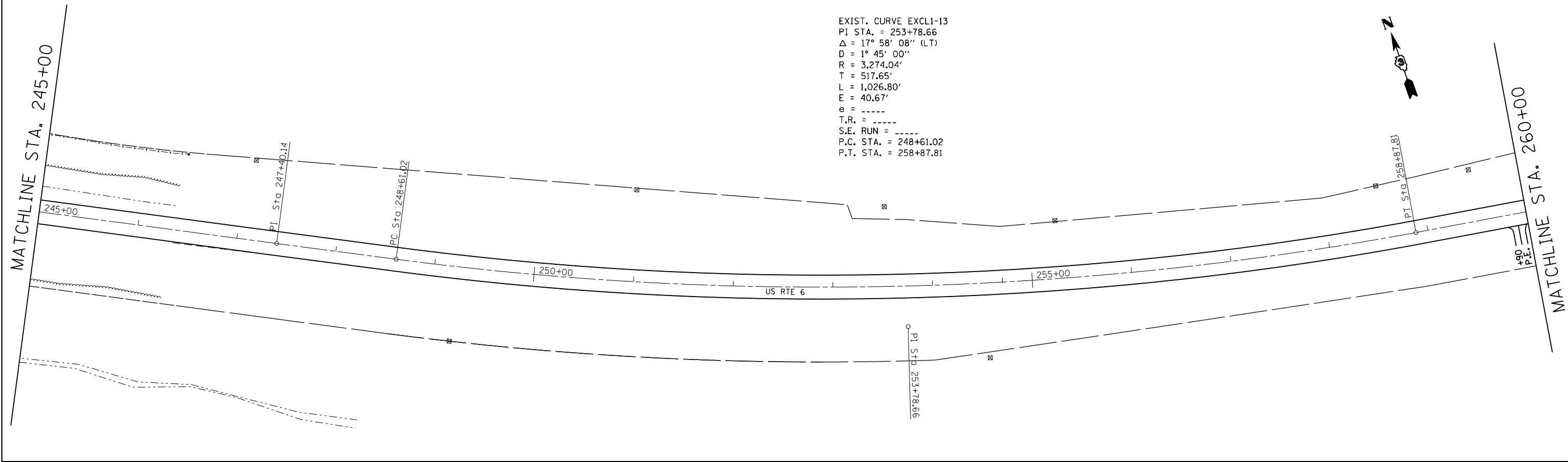


EXIST. CURVE EXCL1-13
 PI STA. = 253+78.66
 $\Delta = 17^\circ 58' 08''$ (LT)
 $D = 1^\circ 45' 00''$
 $R = 3,274.04'$
 $T = 517.65'$
 $L = 1,026.80'$
 $E = 40.67'$
 $e = \text{-----}$
 $T.R. = \text{-----}$
 $S.E. RUN = \text{-----}$
 $P.C. STA. = 248+61.02$
 $P.T. STA. = 258+87.81$



FILE NAME =	USER NAME = duncanbd	DESIGNED -	REVISED -
Default		DRAWN -	REVISED -
		CHECKED -	REVISED -
		DATE -	REVISED -

**STATE OF ILLINOIS
 DEPARTMENT OF TRANSPORTATION**

PLAN VIEW

SCALE: 1:50 SHEET 6 OF 18 SHEETS STA. 245+00 TO STA. 275+00

F.A.P. RTE.	SECTION	COUNTY	TOTAL SHEETS	SHEET NO.
623	(G,H,O)RS-3	LAS-GRU	36	22
CONTRACT NO. 66B91				
ILLINOIS FED. AID PROJECT				