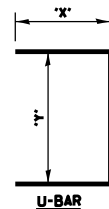
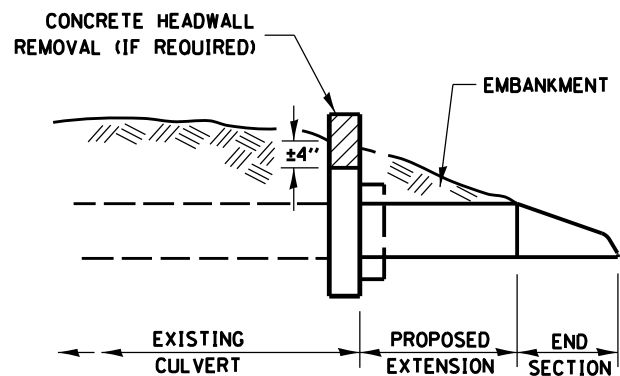
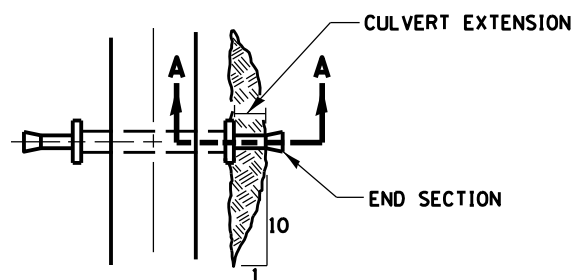


EXPANSION BOLTS SHALL CONSIST OF SELF DRILLING EXPANSION SHIELDS AND 3/4\" DIA. HOOKED BOLTS. HOOKED BOLTS SHALL EXTEND A MINIMUM OF 9\" INTO NEW CONCRETE.
MINIMUM CERTIFIED PROOF LOAD = 4,080 LBS



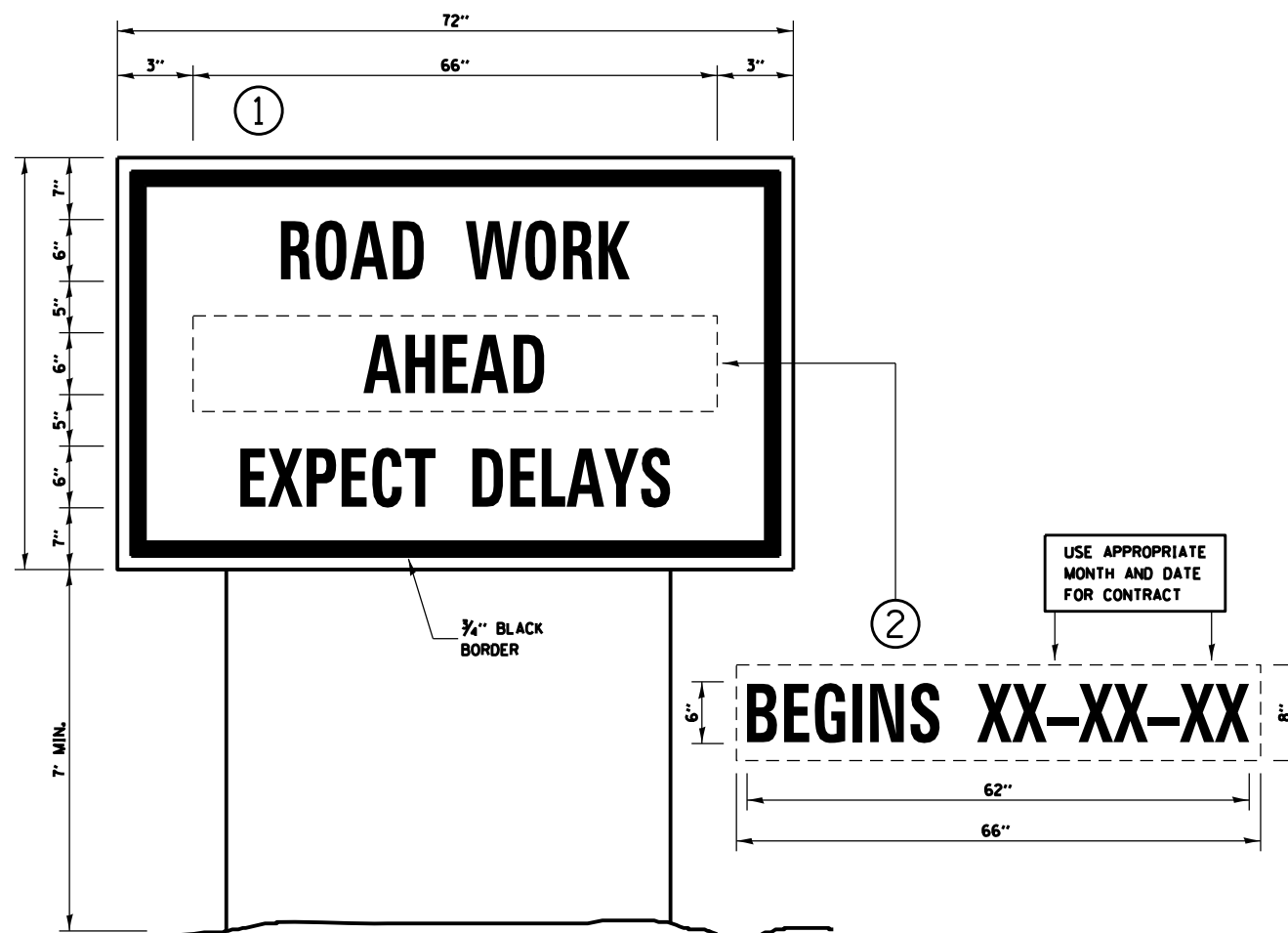
LOCATION	EXISTING CULVERT SIZE		PIPE DIMENSION		PIPE AREA		EXTENSION COLLAR		A-BAR			U-BAR		CLASS SI CONC. (MISC.)		5/8\" DIA. EXPANSION BOLTS	
	DIA. IN.	SO. FT.	DIA. IN.	SO. FT.	WIDTH IN.	HEIGHT IN.	WIDTH IN.	HEIGHT IN.	12\"	12\"	12\"	12\"	12\"	12\"	CL. TD.	POUND	EACH
12x22 LT	36"	7.07	36"	7.07	48"	48"	48"	48"	4"	42"	48"	0.33	40.08			12	

COLLAR DETAIL (R.C.C.P. EXTENSION OF PIPE CULVERT)



SECTION A-A

PLAN AT CULVERT EXTENSIONS



TEMPORARY INFORMATION SIGNING

NOTES:

1. USE 6\" D BLACK LETTERING ON FLOURESENT ORANGE BACKGROUND.
2. ERECT SIGNS AT LOCATIONS IN ADVANCE OF THE "ROAD CONSTRUCTION AHEAD" SIGNS AS DIRECTED BY THE ENGINEER.
3. ERECT SIGN ① WITH INSTALLED PANEL ② A MINIMUM OF ONE WEEK PRIOR TO THE START OF THE LANE CLOSURE.
4. REMOVE PANEL ② ON THAT DATE.
5. SEE SPECIAL PROVISION "TEMPORARY INFORMATION SIGNING" FOR ADDITIONAL INFORMATION.
6. WILL BE PAID FOR PER 50 FT AS "TEMPORARY INFORMATION SIGNING". EACH SIGN = 21 50 FT AND THE DATE PANEL ② WILL NOT BE MEASURED SEPARATELY FOR PAYMENT.

FILE NAME =	USER NAME = \$USER\$	DESIGNED -	REVISED -	STATE OF ILLINOIS DEPARTMENT OF TRANSPORTATION	DETAILS		F.A.I. RTE.	SECTION	COUNTY	TOTAL SHEETS	SHEET NO.	
\$FILEL\$		DRAWN -	REVISED -		SCALE:	SHEET NO. 79 OF 98 SHEETS	STA.	80	(32-2) HBR-6	GRUNDY	98	79
\$MODELNAME\$		CHECKED -	REVISED -				TO STA.	CONTRACT NO. 66B27		ILLINOIS FED. AID PROJECT		
		DATE -	REVISED -									