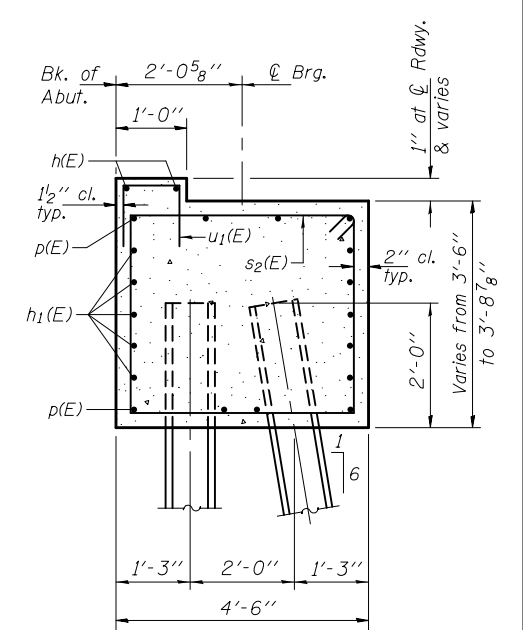
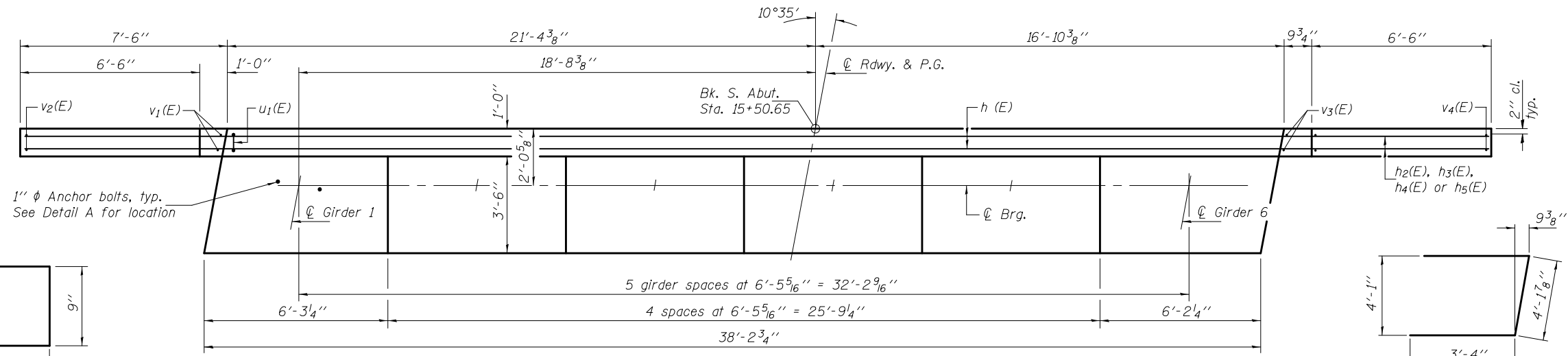


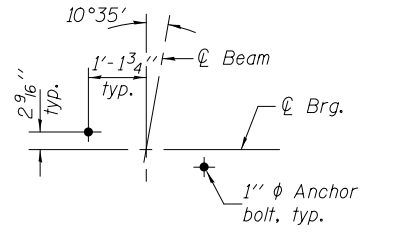
**ELEVATION**  
(Looking South)



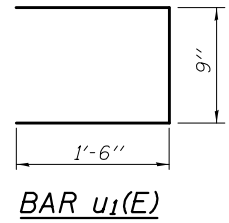
**SECTION THRU ABUT.**



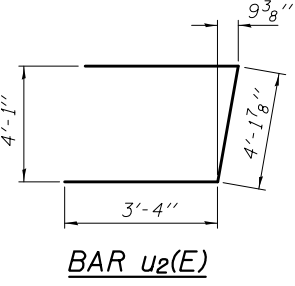
**TOP PLAN**



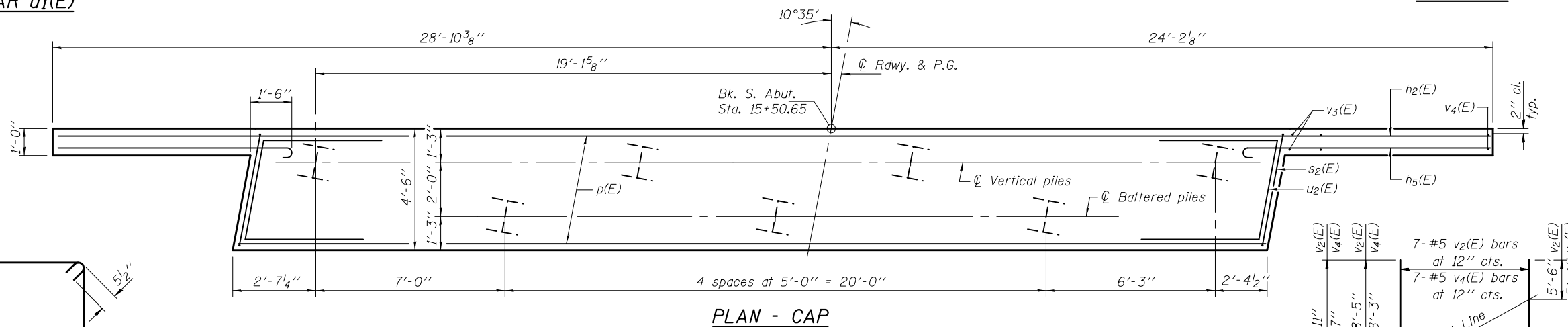
**DETAIL A**



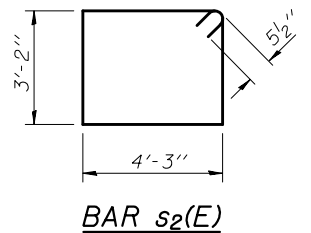
**BAR u1(E)**



**BAR u2(E)**



**PLAN - CAP**

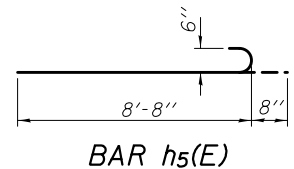


**BAR s2(E)**

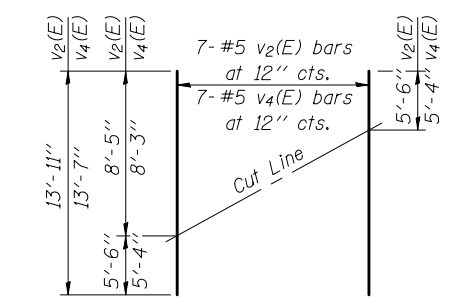
**PILE DATA**

Type: Steel HP14x73  
Nominal Required Bearing: 578 Kips  
Factored Resistance Available: 318 Kips  
Est. Length: 48'  
No. Production Piles: 7  
No. Test Piles: 0

Notes: Pour steps monolithically with cap.  
Space reinforcement in cap to miss anchor bolts.



**BAR h5(E)**



**FIELD CUTTING DIAGRAM**

Order v2(E) & v4(E) full length. Cut as shown & use remainder of bars in opposite face.

**BILL OF MATERIAL**

Bar	No.	Size	Length	Shape
h(E)	2	#5	37'-10"	—
h1(E)	10	#4	37'-10"	—
h2(E)	10	#6	9'-7"	—
h3(E)	20	#6	7'-1"	—
h4(E)	4	#6	7'-8"	—
h5(E)	10	#6	9'-4"	—
p(E)	8	#7	37'-10"	—
s2(E)	38	#5	15'-9"	□
u1(E)	39	#5	3'-9"	—
u2(E)	8	#6	10'-10"	—
v1(E)	2	#5	8'-7"	—
v2(E)	7	#5	13'-11"	—
v3(E)	2	#5	8'-5"	—
v4(E)	7	#5	13'-7"	—
Structure Excavation		Cu. Yd.	122	
Concrete Structures		Cu. Yd.	27.5	
Reinforcement Bars, Epoxy Coated		Pound	2640	
Furnishing Steel Piles HP14x73		Foot	336	
Driving Piles		Foot	336	

For details of piles, see sheet 22 of 24.

DESIGNED - Dewey H. Couitas	EXAMINED - <i>Joanne F. [Signature]</i>	DATE - OCTOBER 9, 2014
CHECKED - Frank W. Sharpe	PASSED - <i>Carl [Signature]</i>	REVISED
DRAWN - h.t. duong		REVISED
CHECKED - DHC/FWS		

**STATE OF ILLINOIS**  
**DEPARTMENT OF TRANSPORTATION**

**SOUTH ABUTMENT**  
**STRUCTURE NO. 032-0124**

SHEET NO. 20 OF 24 SHEETS

F.A.U. RT.E.	SECTION	COUNTY	TOTAL SHEETS	SHEET NO.
5966	(32-2) HBR-6	GRUNDY	98	67
CONTRACT NO. 66B27				
ILLINOIS FED. AID PROJECT				