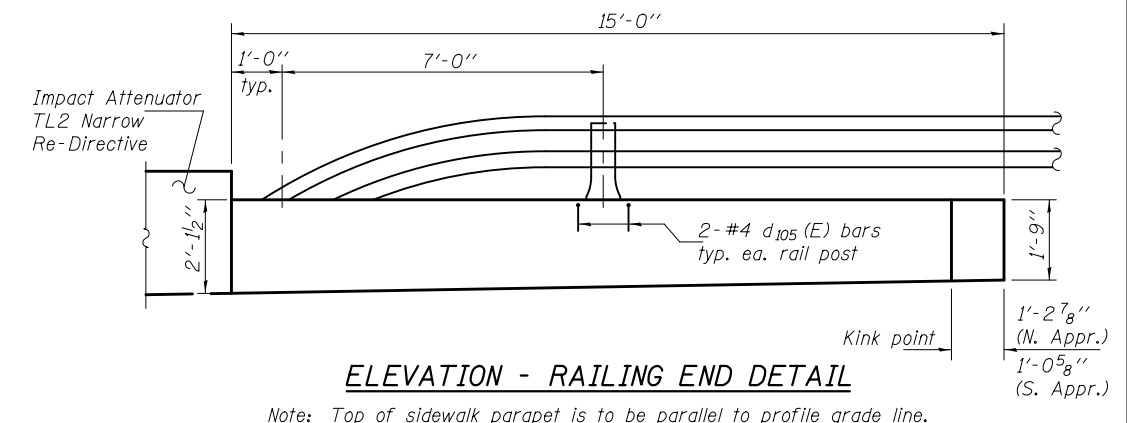
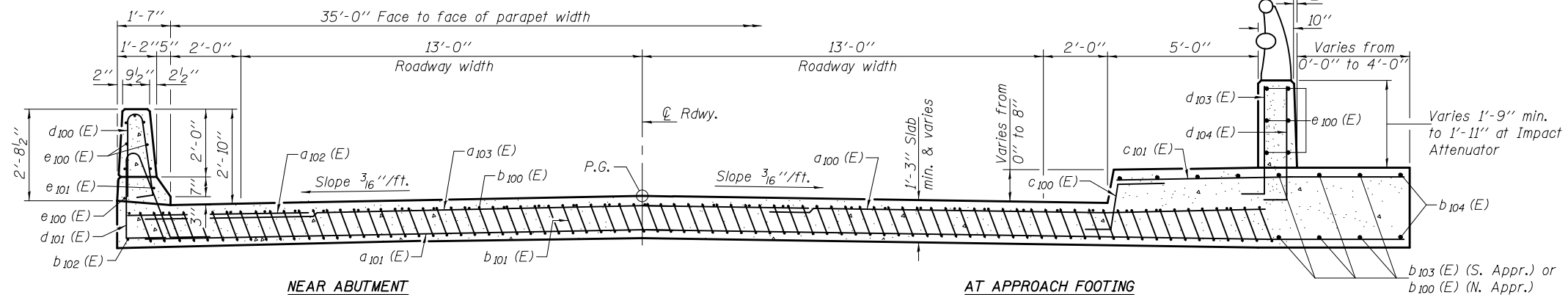


**SECTION C-C**



**ELEVATION - RAILING END DETAIL**

Note: Top of sidewalk parapet is to be parallel to profile grade line.



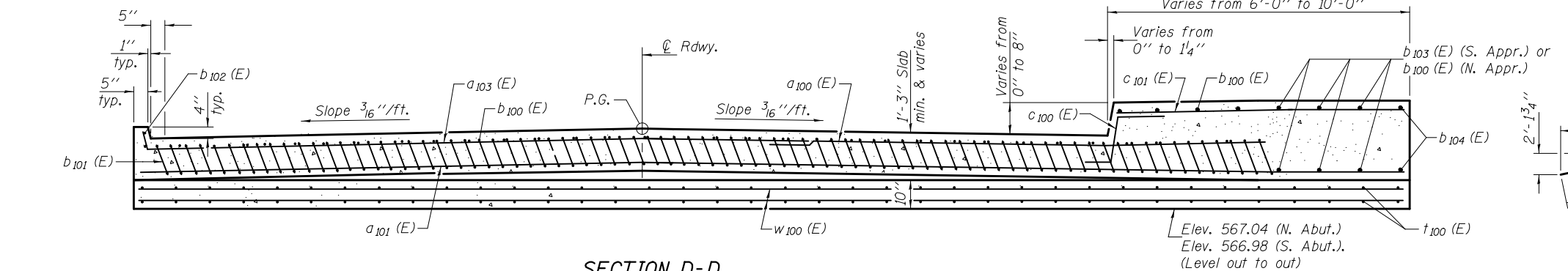
**SECTION D1-D1**

(See Plan for dimensions not shown)

Notes:  
 See sheet 13 of 24 for Detail A, View B-B and Plan - Railing End Detail.  
 Approach slab and parapet concrete shall be paid for as Concrete Superstructure.  
 Approach footing concrete shall be paid for as Concrete Structures.  
 Reinforcement shall be paid for as Reinforcement Bars, Epoxy Coated.  
 For v(E) bar details, see sheet 11 of 24.  
 The approach footing maximum applied service bearing pressure (Qmax) = 2.0 ksf.  
 Cost of excavation for approach footing included with Concrete Structures.  
 For Granular Backfill for Structures and drainage treatment details, see sheet 2 of 24.  
 For additional parapet details, see sheets 10 & 11 of 24.  
 For c100(E) and d100(E) thru d105(E) bars, see sheet 13 of 24.

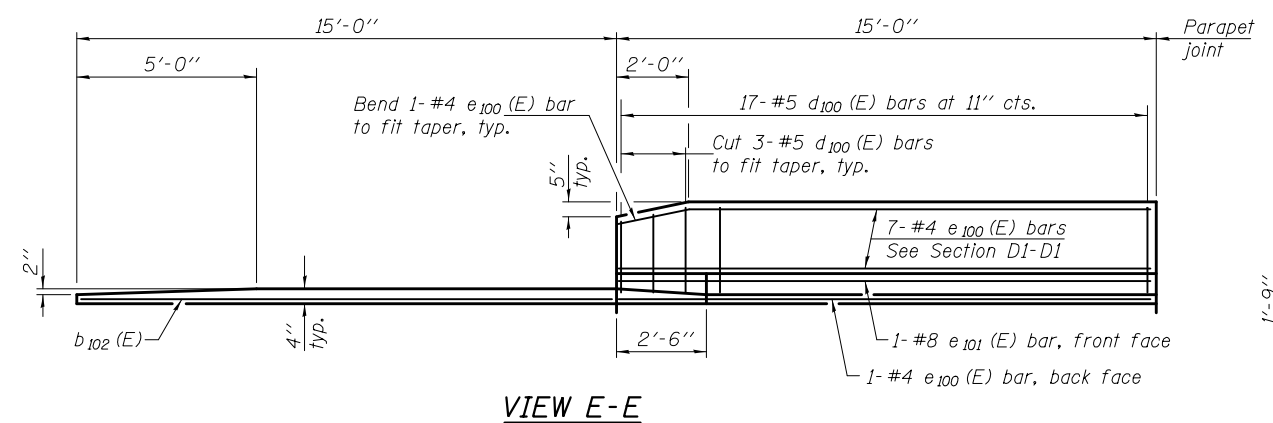
**TWO APPROACHES  
BILL OF MATERIAL**

Bar	No.	Size	Shape
a100 (E)	50	#4	19'-9"
a101 (E)	184	#5	21'-11"
a102 (E)	24	#6	6'-6"
a103 (E)	50	#4	20'-2"
b100 (E)	94	#4	29'-8"
b101 (E)	174	#9	29'-9"
b102 (E)	4	#4	14'-8"
b103 (E)	10	#4	29'-2"
b104 (E)	4	#4	28'-5"
c100 (E)	58	#5	2'-4"
c101 (E)	58	#5	9'-6"
d100 (E)	34	#5	5'-7"
d101 (E)	34	#5	7'-11"
d103 (E)	32	#6	3'-11"
d104 (E)	32	#4	4'-0"
d105 (E)	4	#4	2'-0"
e100 (E)	28	#4	14'-8"
e101 (E)	2	#8	14'-8"
t100 (E)	168	#4	9'-10"
w100 (E)	160	#5	22'-2"
Concrete Superstructure	Cu. Yd.	124.0	
Concrete Structures	Cu. Yd.	25.6	
Reinforcement Bars, Epoxy Coated	Pound	32180	

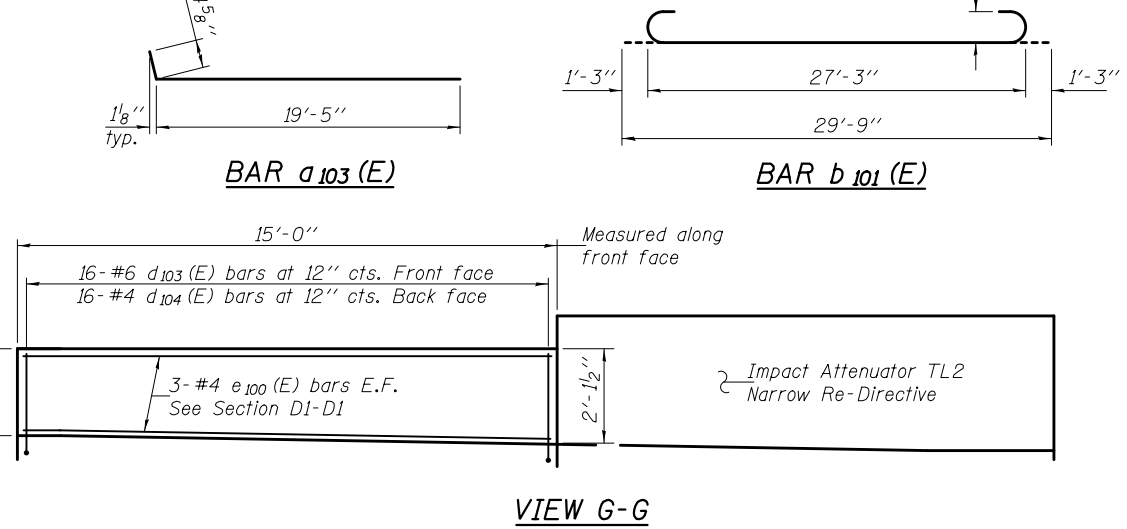


**SECTION D-D**

\*Tilt #9 b101 (E) bars as required to maintain clearance.  
 \*\*\*Cost included with Concrete Superstructure.



**VIEW E-E**



**VIEW G-G**

DESIGNED - Dewey H. Couitas	EXAMINED - <i>Joanne F. [Signature]</i>	DATE - OCTOBER 9, 2014
CHECKED - Frank W. Sharpe	ACTING ENGINEER OF BRIDGE DESIGN	
DRAWN - h.t. duong	PASSED - <i>Carl [Signature]</i>	REVISED
CHECKED - DHC/FWS	ACTING ENGINEER OF BRIDGES AND STRUCTURES	REVISED

**STATE OF ILLINOIS  
DEPARTMENT OF TRANSPORTATION**

**BRIDGE APPROACH SLAB DETAILS  
STRUCTURE NO. 032-0124**

SHEET NO. 14 OF 24 SHEETS

F.A.U. RTE.	SECTION	COUNTY	TOTAL SHEETS	SHEET NO.
5966	(32-2) HBR-6	GRUNDY	98	61
CONTRACT NO. 66B27				
ILLINOIS FED. AID PROJECT				