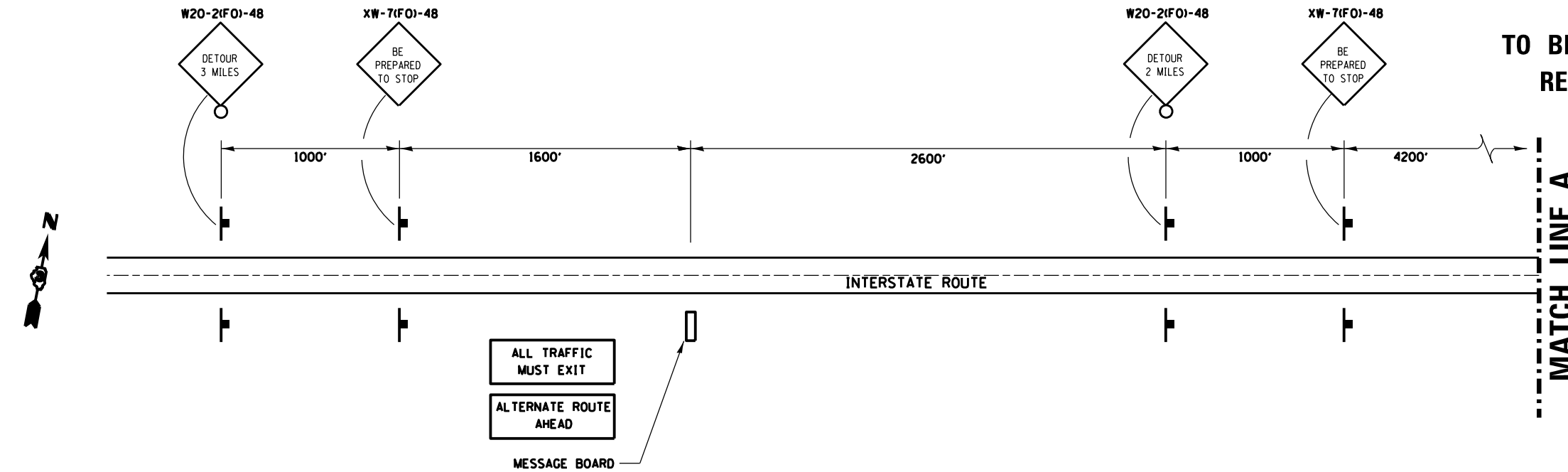
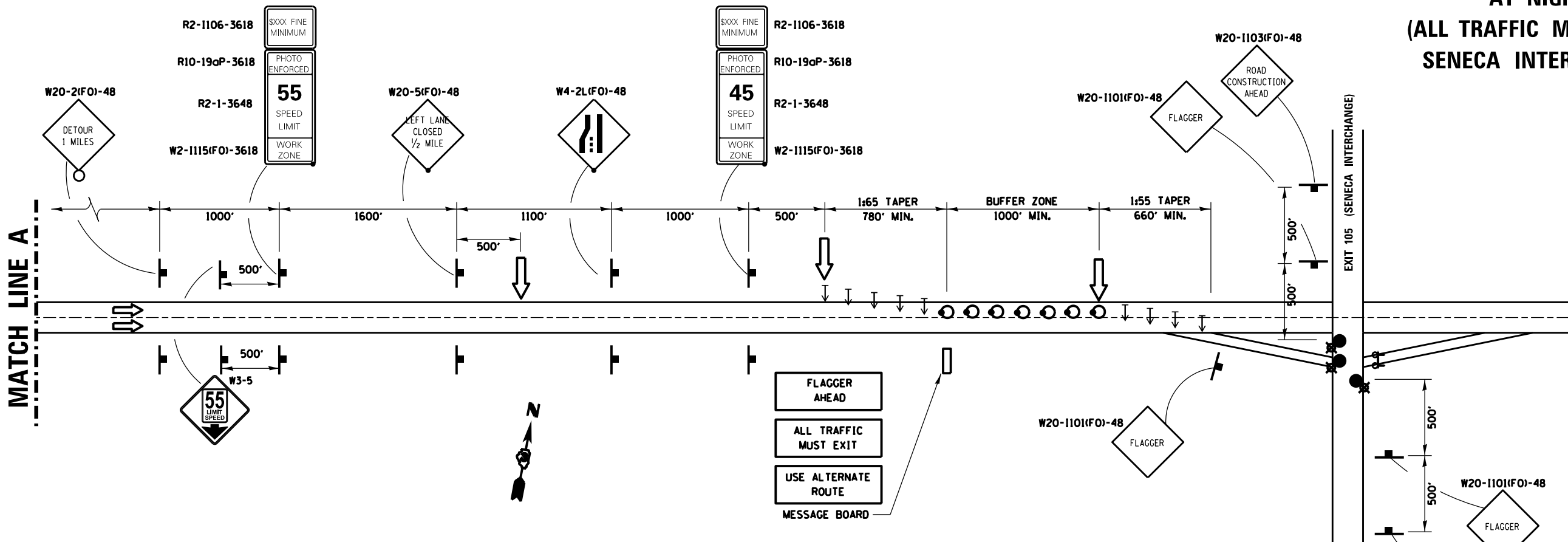


**TO BE USED FOR THE REMOVAL AND REERECTION OF BRIDGE BEAMS**

ITEMS ON THIS SHEET AND THE SHEETS SHOWING THE TEMPORARY RUNAROUND SHALL BE PAID FOR AS TRAFFIC CONTROL AND PROTECTION (SPECIAL)



**TOTAL INTERSTATE CLOSURE AT NIGHT (ALL TRAFFIC MUST EXIT) SENECA INTERCHANGE**



- DRUMS WITH STEADY BURNING LIGHTS  
50' IN TAPERS AND 100' IN TANGENT ON CENTERS
- LIGHTED FLAGGER STATIONS
- ← ARROWBOARD
- ↑ DIRECTION INDICATOR BARRICADE
- ⚡ Type III barricade with flashing lights

FILE NAME = *FILEL*	USER NAME = *USER*	DESIGNED -	REVISED -	STATE OF ILLINOIS DEPARTMENT OF TRANSPORTATION	TOTAL INTERSTATE CLOSURE (I-80 DETOUR)		F.A.I. RTE. 80	SECTION (32-214BR-6)	COUNTY GRUNDY	TOTAL SHEETS 98	SHEET NO. 41	
	PLOT SCALE = *SCALE*	DRAWN -	REVISED -		SCALE:	SHEET NO. 41 OF 98 SHEETS	STA.					
	PLOT DATE = *DATE*	CHECKED -	REVISED -				TO STA.					
		DATE -	REVISED -									CONTRACT NO. 66B27

ILLINOIS FED. AID PROJECT