

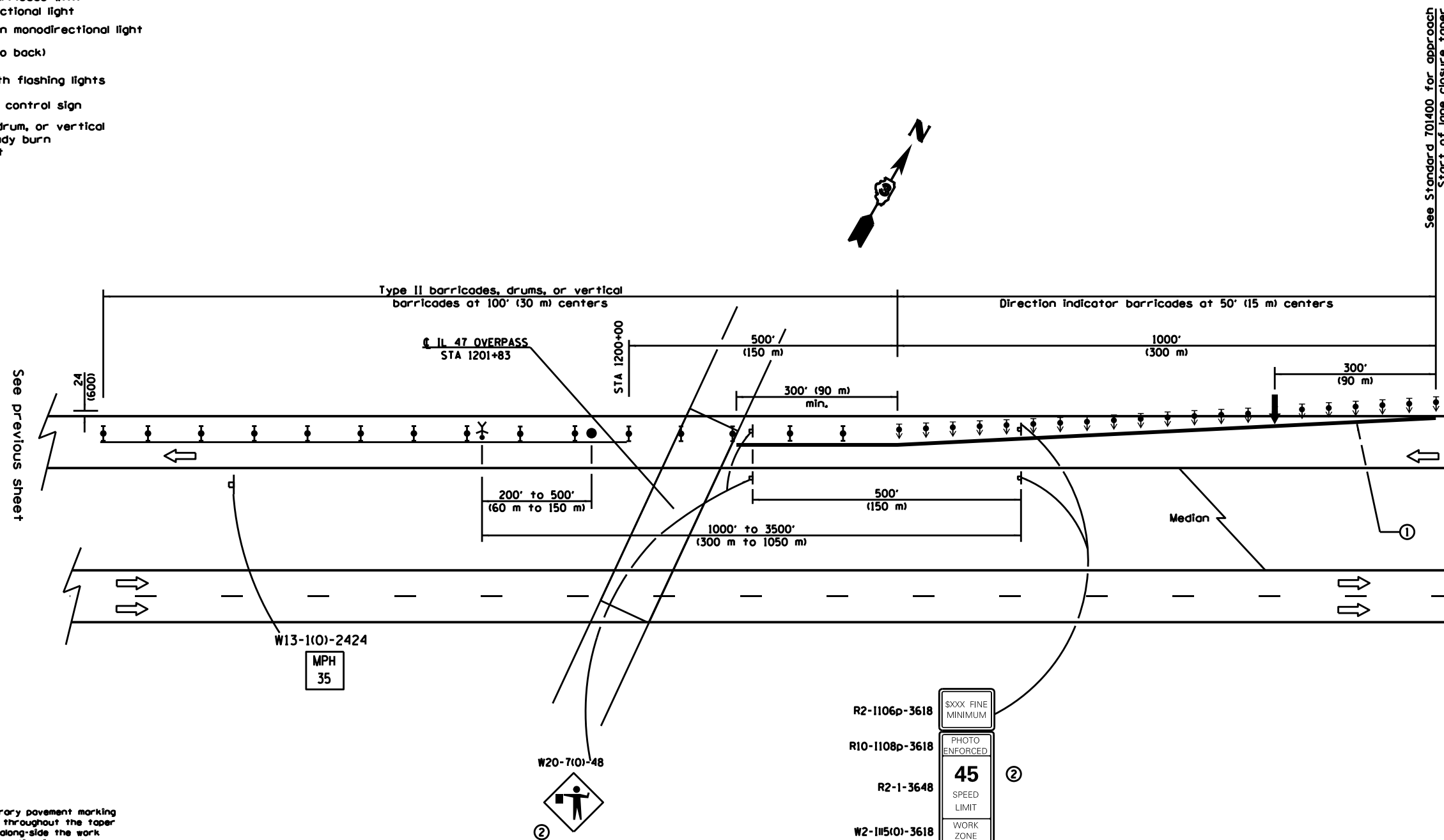
NOT TO SCALE

SYMBOLS

- ↑ Arrow board
- ▨ Work area
- ⊥ Sign
- ⬇ Direction indicator barricade with steady burn monodirectional light
- ⊙ Drum with steady burn monodirectional light
- ▨ Vertical Panel (back to back)
- ⚡ Type III barricade with flashing lights
- Flagger with traffic control sign
- ⬇ Type II barricade, drum, or vertical barricade with steady burn monodirectional light

ITEMS ON THIS SHEET AND THE SHEETS SHOWING THE TOTAL INTERSTATE CLOSURE SHALL BE PAID FOR AS TRAFFIC CONTROL AND PROTECTION (SPECIAL)

CONTRACTOR TO COVER UP ANY EXISTING SIGNS THAT ARE IN CONFLICT WITH THESE SIGNS



- ① ReflectORIZED temporary pavement marking tape shall be placed throughout the taper and for 300' (90 m) along-side the work area when the closure time is greater than fourteen days. The edge line shall be white for right lane closure and yellow for left lane closures.
- ② Work Zone speed limit signs and FLAGGER signs shall be moved as necessary to maintain the required spacing between the signs and the workers in each separate work activity. Work Zone Speed Limit 55 Photo Enforced sign shall be omitted when the work area dictates placement of the sign array within 500' (150 m) of the End Work Zone Speed Limit Sign.

SEE STANDARDS 701400 (SP), 701401, AND 701411 FOR DETAILS NOT SHOWN

FILE NAME =	USER NAME = \$USER\$	DESIGNED -	REVISED -	STATE OF ILLINOIS DEPARTMENT OF TRANSPORTATION	TRAFFIC CONTROL DURING BEAM REMOVAL			F.A.I. RTE.	SECTION	COUNTY	TOTAL SHEETS	SHEET NO.
*FILEL\$		DRAWN -	REVISED -					80	(32-214BR-6	GRUNDY	98	39
*MODELNAME\$		CHECKED -	REVISED -		CONTRACT NO. 66827			ILLINOIS FED. AID PROJECT				
		DATE -	REVISED -		SCALE:	SHEET NO. 39 OF 98 SHEETS	STA.	TO STA.				