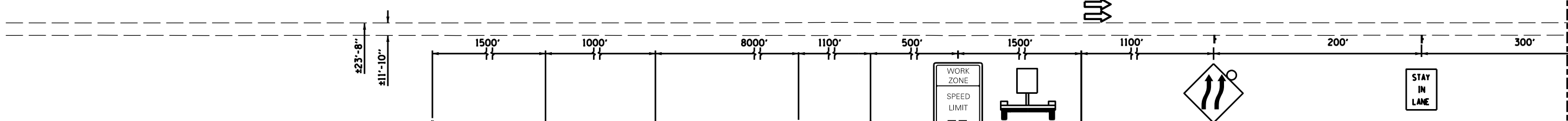
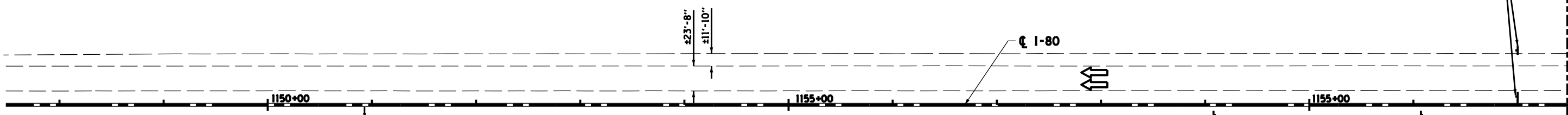


END WORK ZONE SPEED LIMIT
G20-1103(O)-3660
STA 1157+00

MATCH LINE STA. 1157 + 50



- LEGEND**
- WORK ZONE
 - DIRECTION OF TRAFFIC
 - DRUMS WITH MONO-DIRECTIONAL STEADY BURNING LIGHTS @ 50' CENTERS, 25' CENTERS ALONG TAPERS
 - IMPACT ATTENUATOR, TEMPORARY (SEVERE USE, NARROW) TL3
 - TEMPORARY CONCRETE BARRIER

TEMPORARY CONCRETE BARRIER	
NORMAL POSTED SPEED	TAPER RATIO
40 MPH & ABOVE	12:1
BELOW & 40 MPH	8:1

WORK ZONE SPEED LIMIT 55
PHOTO ENFORCED
\$375 FINE MINIMUM

RADAR SPEED TRAILER (SOUTH SIDE ONLY) STA 1122+08

MAINTAIN WORK ZONE SPEED LIMIT 55 MPH
W13-1 SUPPLEMENTAL PLATE STA 1137+28

ROAD CONSTRUCTION AHEAD 3 MILES
W20-1(O)-48
W16-3A(O)-3012
STA 1000+68

WORK ZONE PUBLIC INFORMATION SIGN
STA 1015+68

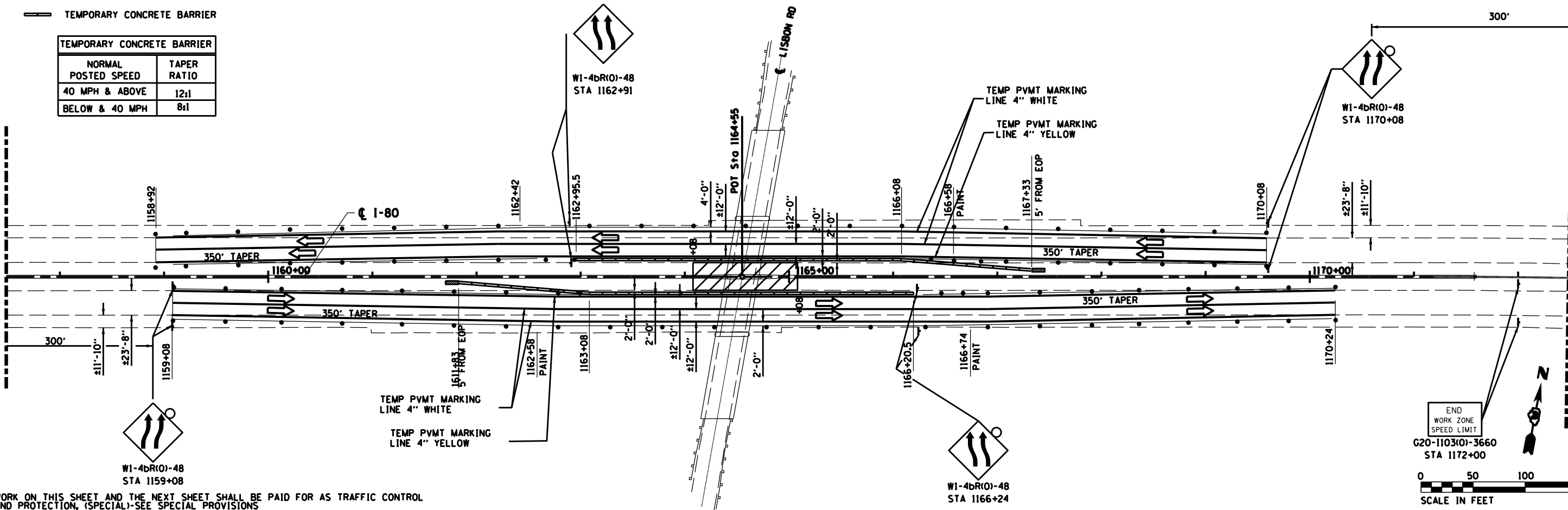
PORTABLE CHANGEABLE MESSAGE SIGN (SOUTH SIDE ONLY)
STA 1025+68

ROAD CONSTRUCTION AHEAD 1 MILE
W20-1(O)-48
W16-3A(O)-3612
STA 1122+28

STAY IN LANE
R4-9-3648
STA 1156+08

500 FEET
W1-4bR(O)-48 & W16-2
STA 1154+08

MATCH LINE STA. 1157 + 50



MATCH LINE STA. 1172 + 50

END WORK ZONE SPEED LIMIT
G20-1103(O)-3660
STA 1172+00



WORK ON THIS SHEET AND THE NEXT SHEET SHALL BE PAID FOR AS TRAFFIC CONTROL AND PROTECTION, (SPECIAL)-SEE SPECIAL PROVISIONS

FILE NAME =	USER NAME = *USER*	DESIGNED -	REVISED -	STATE OF ILLINOIS DEPARTMENT OF TRANSPORTATION	SUGGESTED MAINTENANCE OF TRAFFIC I-80 STAGE 2			F.A.I. RTE. =	SECTION	COUNTY	TOTAL SHEETS	SHEET NO.
FILEL		DRAWN -	REVISED -					80	(32-2)WBR-6	GRUNDY	98	36
MODELNAME	PLOT SCALE = *SCALE*	CHECKED -	REVISED -		SCALE: SHEET NO. 36 OF 98 SHEETS STA. TO STA.			CONTRACT NO. 66827				
	PLOT DATE = *DATE*	DATE -	REVISED -		ILLINOIS FED. AID PROJECT							