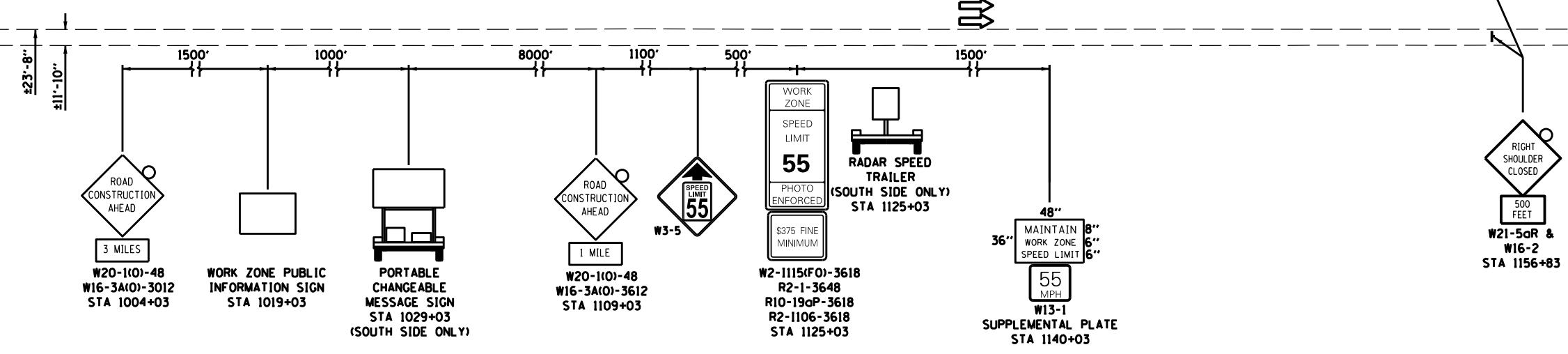


- LEGEND**
- WORK ZONE
 - DIRECTION OF TRAFFIC
 - DRUMS WITH MONO-DIRECTIONAL STEADY BURNING LIGHTS @ 50' CENTERS, 25' CENTERS ALONG TAPERS
 - IMPACT ATTENUATOR, TEMPORARY (SEVERE USE, NARROW) TL3
 - TEMPORARY CONCRETE BARRIER

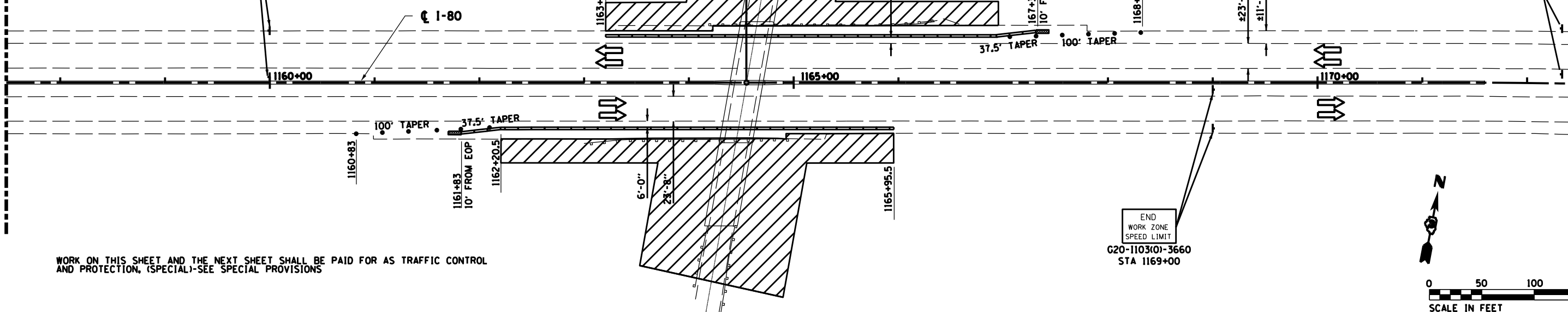
TEMPORARY CONCRETE BARRIER	
NORMAL POSTED SPEED	TAPER RATIO
40 MPH & ABOVE	12:1
BELOW & 40 MPH	8:1



MATCH LINE STA. 1157 + 50

MATCH LINE STA. 1157 + 50

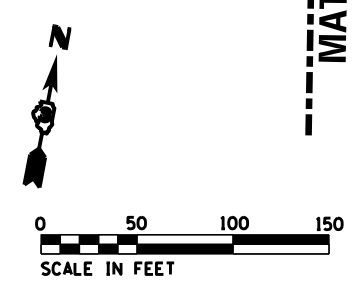
END WORK ZONE SPEED LIMIT
G20-1103(10)-3660
STA 1160+00



RIGHT SHOULDER CLOSED
500 FEET
W21-5oR & W16-2
STA 1172+33

END WORK ZONE SPEED LIMIT
G20-1103(10)-3660
STA 1169+00

WORK ON THIS SHEET AND THE NEXT SHEET SHALL BE PAID FOR AS TRAFFIC CONTROL AND PROTECTION, (SPECIAL)-SEE SPECIAL PROVISIONS



FILE NAME = #FILE#	USER NAME = #USER#	DESIGNED -	REVISED -	STATE OF ILLINOIS DEPARTMENT OF TRANSPORTATION	SUGGESTED MAINTENANCE OF TRAFFIC I-80 STAGE 1			F.A.I. RTE. = 80	SECTION = 132-218R-6	COUNTY = GRUNDY	TOTAL SHEETS = 98	SHEET NO. = 33
#MODELNAME#	PLOT SCALE = #SCALE#	DRAWN -	REVISED -		SCALE:	SHEET NO. 33 OF 98 SHEETS	STA.	TO STA.	CONTRACT NO. 66B27			
	PLOT DATE = #DATE#	CHECKED -	REVISED -						ILLINOIS FED. AID PROJECT			
		DATE -	REVISED -									