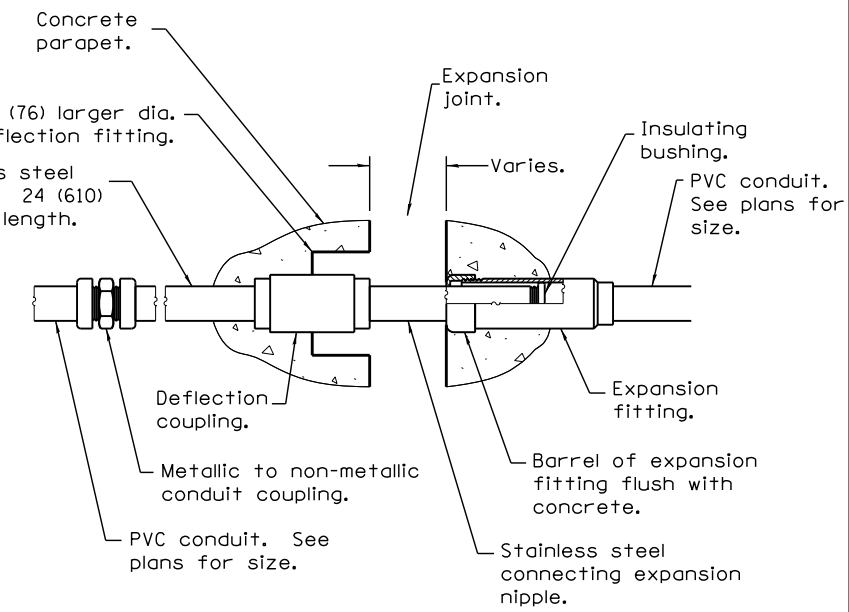
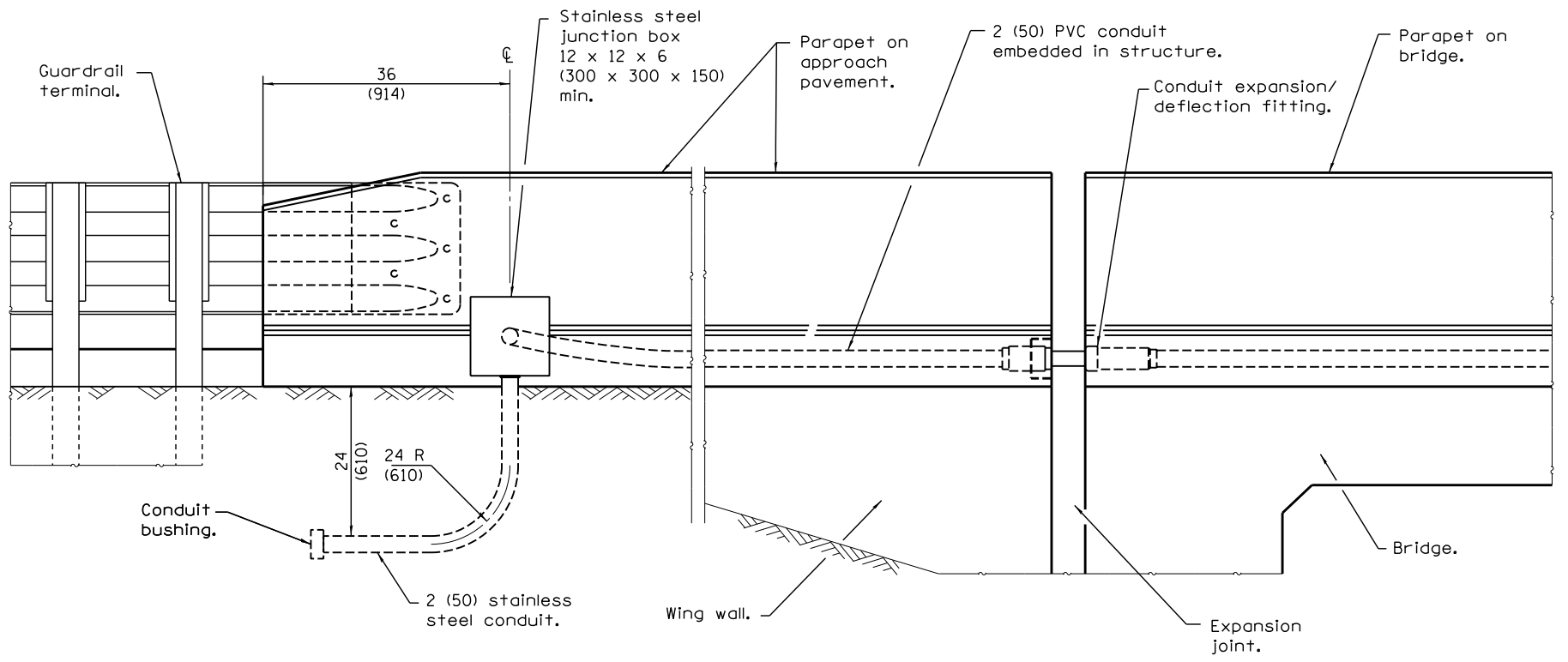


**INTEGRAL/SEMI-INTEGRAL ABUTMENT WITH  
PARAPET ON APPROACH PAVEMENT**



**COMBINATION EXPANSION/DEFLECTION FITTING**



**JOINTED ABUTMENT WITH  
PARAPET ON APPROACH PAVEMENT**

**GENERAL NOTES**

The barrel in the expansion fitting shall be fully embedded in the concrete on one side of the expansion joint. One half the length of the deflection fitting shall be imbedded in the concrete on the other side of the expansion joint.

The contractor shall install combination expansion deflection fittings at all bridge expansion joints.

With the approval of the Engineer, the Contractor may substitute two 12 x 12 x 6 (300 x 300 x 150) min. stainless steel junction boxes attached to back of wall and connected with liquid tight flexible non-metallic conduit for all expansion joints.

All dimensions are in inches (millimeters) unless otherwise shown.

**RACEWAY EMBEDDED  
IN STRUCTURE**

(Sheet 1 of 3)

FILE NAME =	USER NAME = jauche	DESIGNED -	REVISED -	<b>STATE OF ILLINOIS DEPARTMENT OF TRANSPORTATION</b>	<b>RACEWAY EMBEDDED IN STRUCTURE</b>			F.A.I. RTE.	SECTION	COUNTY	TOTAL SHEETS	SHEET NO.
Default	Plot Scale = 40.0000' / in.	DRAWN -	REVISED -					80	(32-2) HBR-6	GRUNDY	98	29
	PLOT DATE = 8/13/2014	CHECKED -	REVISED -		SCALE: SHEET NO. 29 OF 98 SHEETS STA. TO STA.			CONTRACT NO. 66B27				
		DATE -	REVISED -		ILLINOIS FED. AID PROJECT							