

F.A.I. RTE.	SECTION	COUNTY	TOTAL SHEETS	SHEET NO.
80	(32-2)HBR-6	GRUNDY	98	1
		ILLINOIS	CONTRACT NO. 66B27	

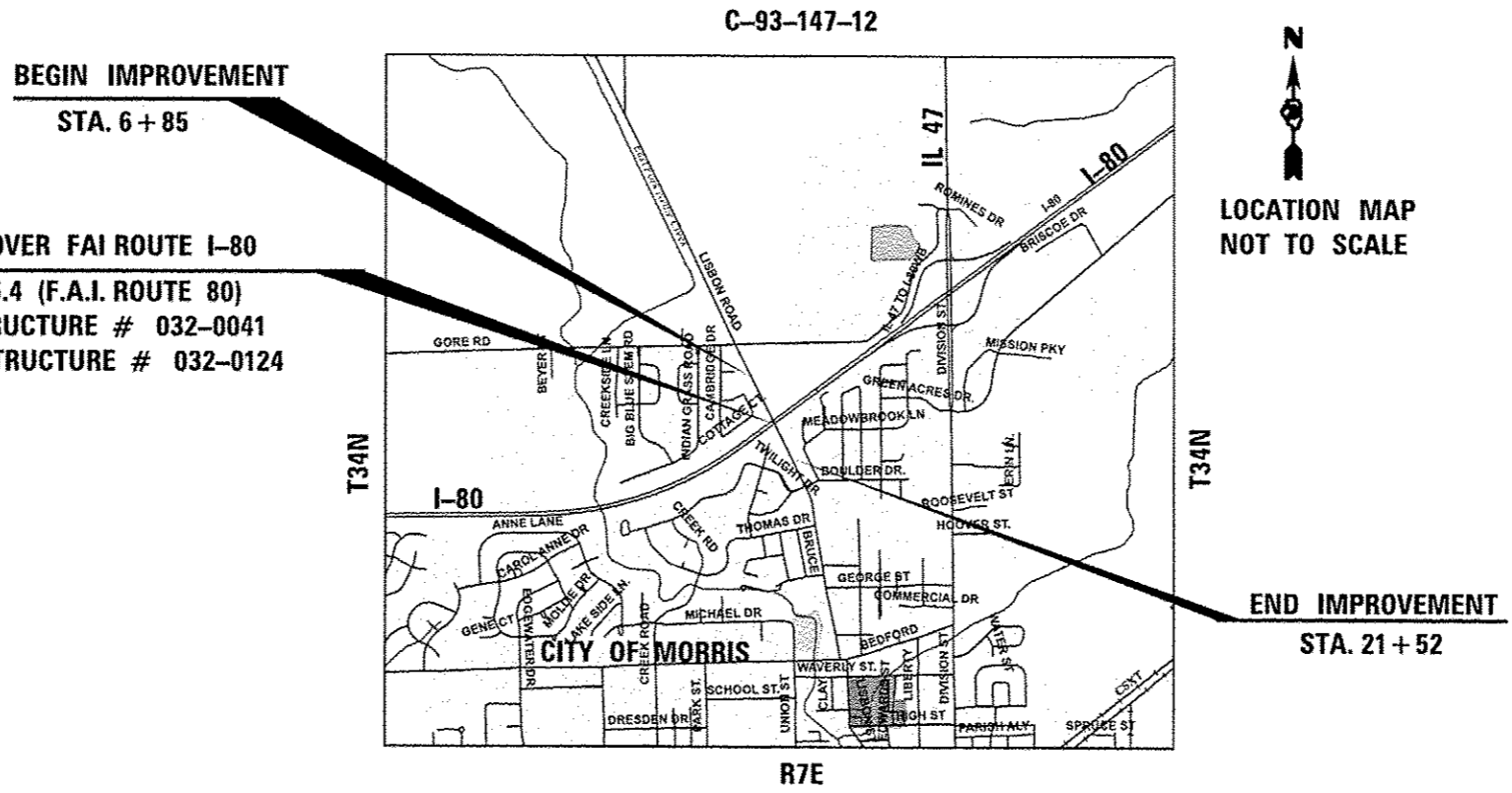
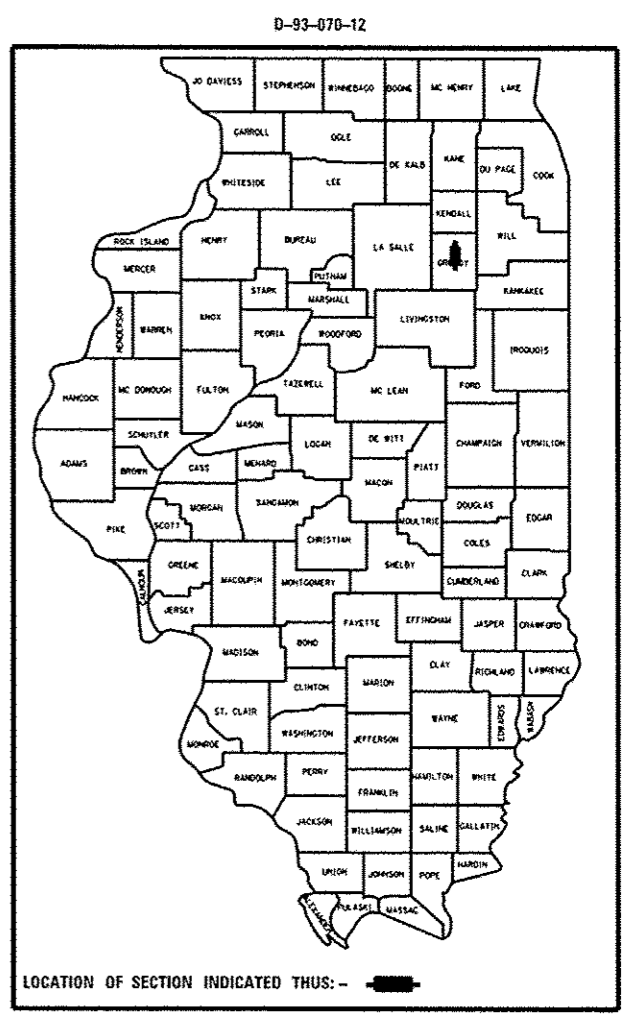
STATE OF ILLINOIS
DEPARTMENT OF TRANSPORTATION
DIVISION OF HIGHWAYS

PROPOSED HIGHWAY PLANS

F.A.I. ROUTE 80 (I-80)
SECTION (32-2)HBR-6
PROJECT: *ACNHPP-0080 (406)*
GRUNDY COUNTY
BRIDGE REPLACEMENT

INDEX

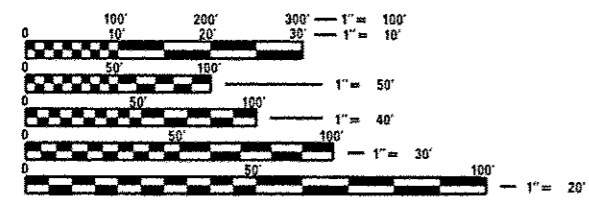
- 1 COVER SHEET
- 2 GENERAL NOTES & LOCATION
- 3-11 SUMMARY OF QUANTITIES
- 12 TYPICAL SECTIONS
- 13-16 SCHEDULES OF QUANTITIES
- 17-19 ALIGNMENT, TIES AND BENCHMARKS
- 20-24 PLAN AND PROFILE SHEETS
- 25-31 LIGHTING DETAILS
- 32-34 STAGE I CONSTRUCTION
- 35-37 STAGE II CONSTRUCTION
- 38-40 TRAFFIC CONTROL DURING BEAM REMOVAL AND CROSSOVER DETAILS
- 41 TOTAL INTERSTATE CLOSURE DETAILS
- 42 ALTERNATE ROUTE SIGNING DETAILS
- 43-47 EROSION & SEDIMENT CONTROL PLANS AND DETAILS
- 48-71 STRUCTURE PLANS
- 72-74 EXISTING STRUCTURE DETAILS
- 75-78 SIGN SHEETS
- 79-83 DETAILS
- 84-98 CROSS SECTIONS



LISBON RD OVER FAI ROUTE I-80
STA 1164 + 55.4 (F.A.I. ROUTE 80)
EXISTING STRUCTURE # 032-0041
PROPOSED STRUCTURE # 032-0124

FUNCTIONAL CLASSIFICATION

LISBON RD	I-80
URBAN MINOR ARTERIAL	URBAN INTERSTATE
2014 ADT: 4,670	2013 ADT: 28,370
2024 ADT: 4,990	2023 ADT: 30,320
2034 ADT: 5,300	2033 ADT: 32,000



FULL SIZE PLANS HAVE BEEN PREPARED USING STANDARD ENGINEERING SCALES. REDUCED SIZED PLANS WILL NOT CONFORM TO STANDARD SCALES. IN MAKING MEASUREMENTS ON REDUCED PLANS, THE ABOVE SCALES MAY BE USED.

J.U.I.E.
JOINT UTILITY LOCATION INFORMATION FOR EXCAVATION
1-800-892-0123
OR 811

PROJECT ENGINEER: CRAIG REED, PE
SQUAD LEADER: PAT BRABOY, PE
TOWNSHIP(S): SARATOGA
CONTRACT NO. 66B27

STATE OF ILLINOIS
DEPARTMENT OF TRANSPORTATION
DIVISION OF HIGHWAYS

SUBMITTED August 18, 2014
Paul Coete, P.E.
DEPUTY DIRECTOR OF HIGHWAYS, REGION ENGINEER

Oct 17, 2014
John D. Baranzelli, P.E.
ENGINEER OF DESIGN AND ENVIRONMENT

Oct 17, 2014
Omer Osman, P.E.
DIRECTOR OF HIGHWAYS, CHIEF ENGINEER

PRINTED BY THE AUTHORITY
OF THE STATE OF ILLINOIS

GROSS & NET LENGTH ALONG LISBON RD = 1,467.0 FT. = 0.278 MILE