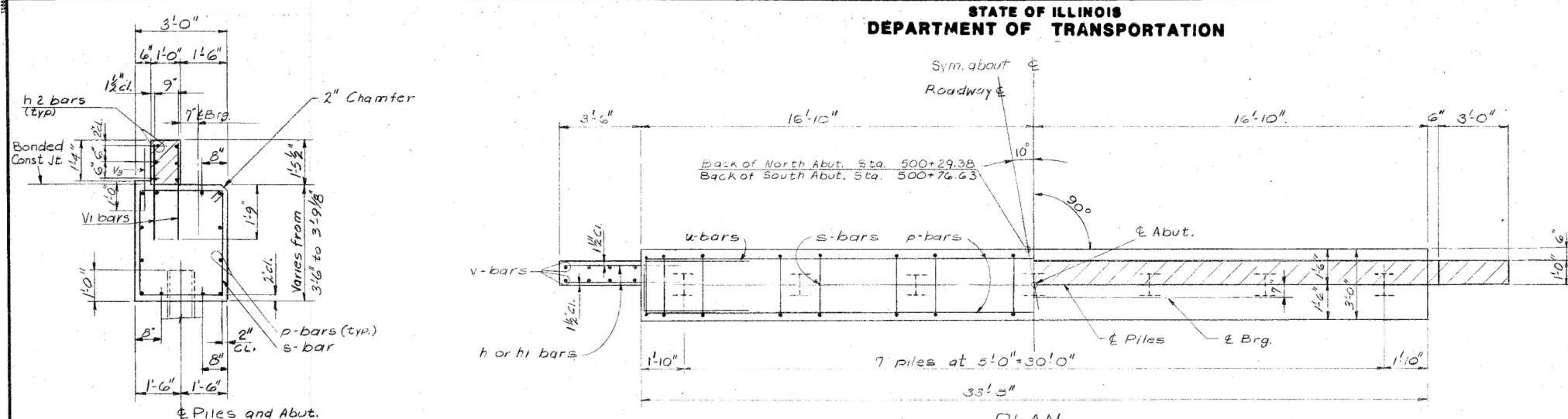
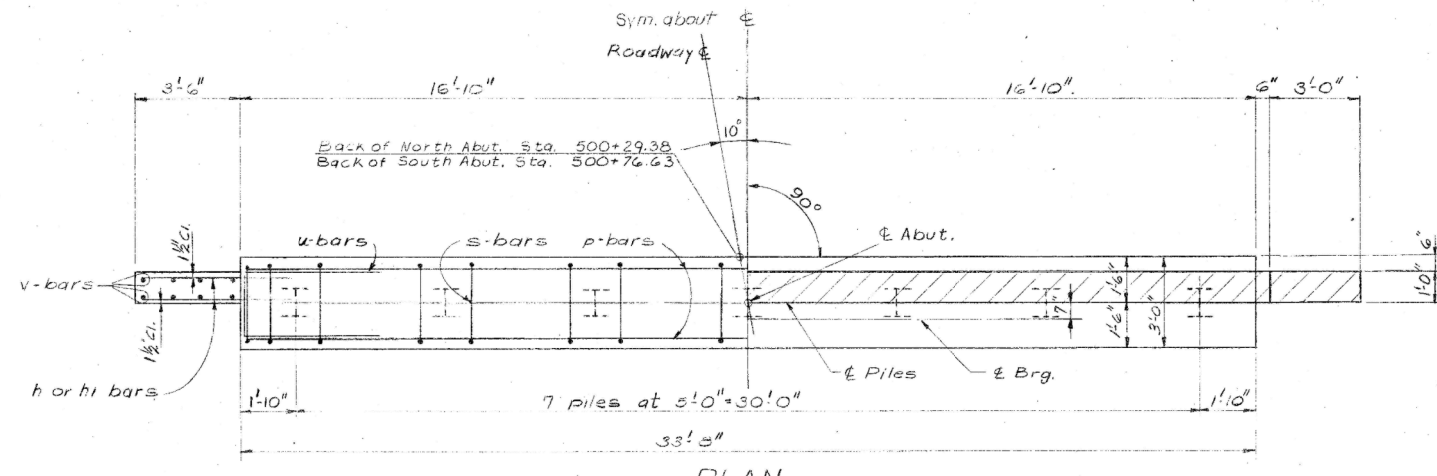


STATE OF ILLINOIS  
DEPARTMENT OF TRANSPORTATION

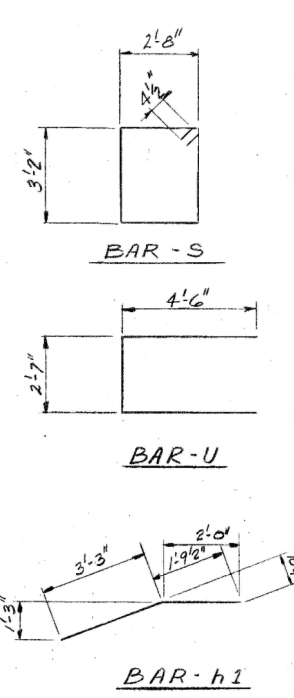
ROUTE NO.	SECTION	COUNTY	SHEET NO.	SHEET	SHEET NO.
S.B. 25	38BR	IROQUOIS	22	10	4 SHEETS
FED. ROAD DIST. NO. 5		ILLINOIS		FED. AID PROJECT	



SECTION-AA



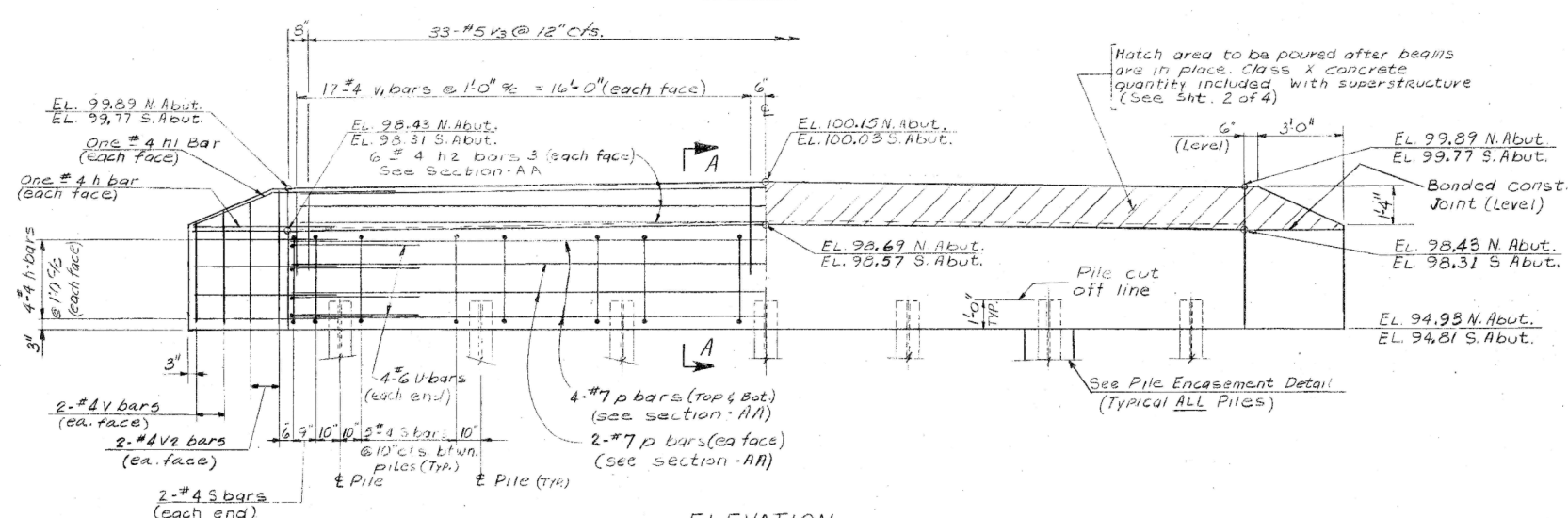
PLAN



BAR-S

BAR-U

BAR-h1

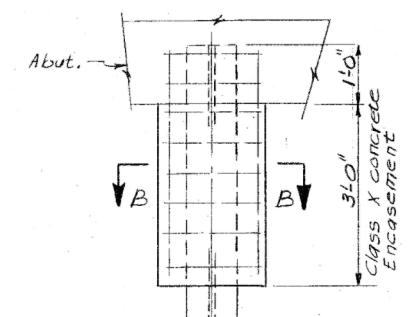


ELEVATION

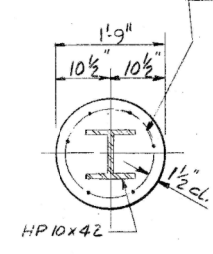
North Abut. Looking Back station  
South Abut. Looking Ahead Station

PILE DATA

North Abut.		South Abut.	
Type:	H.P. 10x42	Type:	H.P. 10x42
Capacity:	30 Ton, Driven to 45 Tons Bearing	Capacity:	30 Ton, Driven to 45 Ton Bearing
Est. Length:	33 Ft.	Est. Length:	33 Ft.
No. Req'd:	6 plus one Test Pile	No. Req'd:	7



PILE ENCASEMENT DETAIL  
(14 Req'd)



SECTION-B-B

TWO ABUTMENTS  
BILL OF MATERIAL

Bar	No.	Se.	Total	Size	Length	Shape
h	20	20	40	#4	5'-0"	—
h1	4	4	8	#4	5'-3"	—
h2	6	6	12	#4	33'-4"	—
P	12	12	24	#7	33'-4"	—
S	34	34	68	#4	12'-5"	□
U	8	8	16	#6	11'-7"	□
V	8	8	16	#4	3'-4"	—
V1	68	68	136	#4	3'-1"	—
V2	8	8	16	#4	4'-2"	—
V3	33	33	66	#5	2'-0"	—
Class X concrete				Cu. Yds	29.8	
Reinforcement Bars				Lbs	3410	
Steel Piles (HP10x42)				Lin Ft.	429	
Test Piles Steel (HP10x42)				Each	1	

Welded wire fabric 6x6-W4.0x W4.0 weighing 58#/100 sqft. The cost of class x concrete encasement and reinforcement is incidental to the cost of furnishing piles. Forms for encasement may be omitted when soil conditions will permit.

DESIGNED D.J.  
CHECKED W.E.K.  
DRAWN P. WARONSKY  
CHECKED AJM

NORTH AND SOUTH ABUTMENTS  
S.B. 1, ROUTE 25 SECTION 38 BR  
IROQUOIS COUNTY  
STATION 500+53

2-20-86