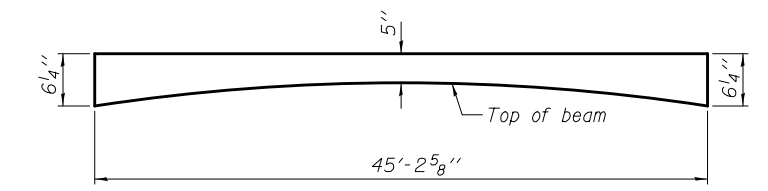
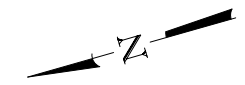
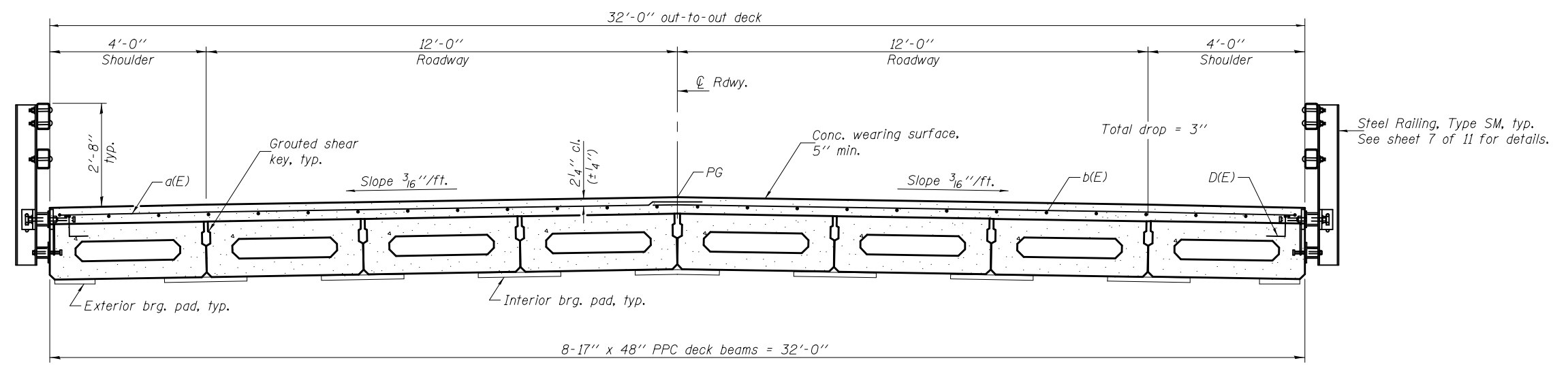


PLAN



ANTICIPATED CONCRETE WEARING SURFACE PROFILE
(For information only)

Notes:
 See sheet 4 of 11 for Superstructure Details and Bill of Material.
 Bars indicated thus 32 x 2-#4 etc. indicates 32 lines of bars with 2 lengths per line.
 Spacing of a(E) bars shall be measured along the $\text{\textcircled{C}}$ of structure.
 All concrete wearing surfaces shall be placed prior to casting a backwall and/or approach slab.
 See sheet 9 of 11 for fabric bearing pad details.
 See sheet 4 of 11 for detail of D(E) bar.



CROSS SECTION
(Looking south)

MIN. BAR LAP
#4 bar = 2'-1"

DESIGNED - Fess Teklehaimanot	EXAMINED - <i>Joanne F. [Signature]</i> ACTING ENGINEER OF BRIDGE DESIGN	DATE - SEPTEMBER 3, 2014
CHECKED - Ray Ahanchi	PASSED - <i>Carl [Signature]</i> ACTING ENGINEER OF BRIDGES AND STRUCTURES	REVISED -
DRAWN - h.t. duong		REVISED -
CHECKED - FT/GRA		

STATE OF ILLINOIS
DEPARTMENT OF TRANSPORTATION

SUPERSTRUCTURE
STRUCTURE NO. 038-0184

F.A.S. RTE.	SECTION	COUNTY	TOTAL SHEETS	SHEET NO.
1324	38BR	IROQUOIS	35	16
CONTRACT NO. 66A72				
ILLINOIS FED. AID PROJECT				

SHEET NO. 3 OF 11 SHEETS