

STATE OF ILLINOIS
DEPARTMENT OF TRANSPORTATION

F.A.P. RTE.	SECTION	COUNTY	TOTAL SHEETS	SHEET NO.
793	(R-1)RS-5	MADISON	44	1
		ILLINOIS	CONTRACT NO. 76M79	

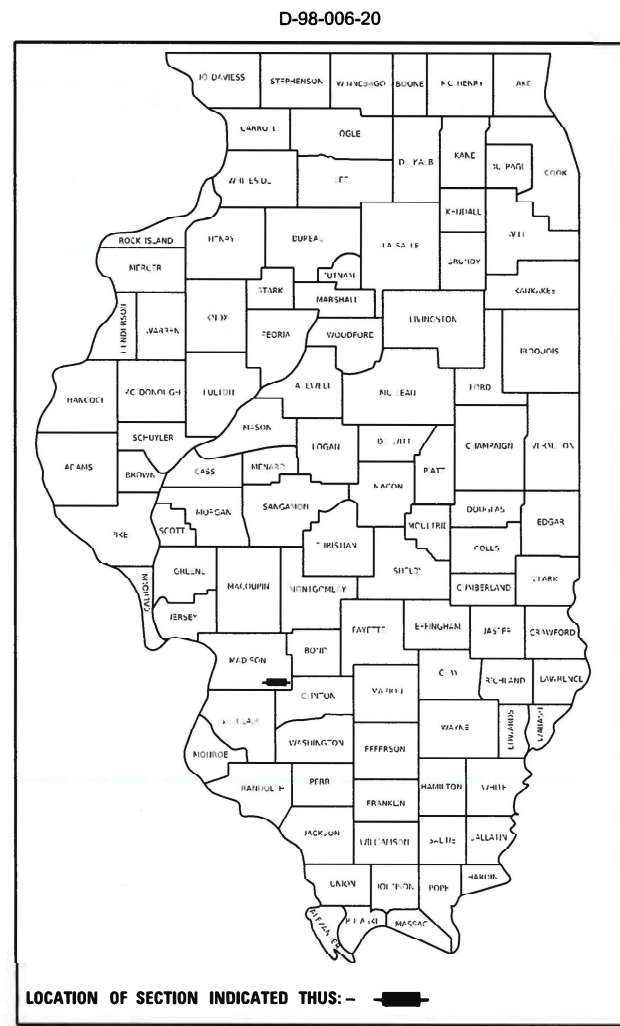
PROPOSED HIGHWAY PLANS

FAP ROUTE 793 (US 40 / IL 143)
SECTION (R-1)RS-5
PROJECT NHPP-KA57(594)
STANDARD OVERLAY RESURFACING
MADISON COUNTY

C-98-020-20

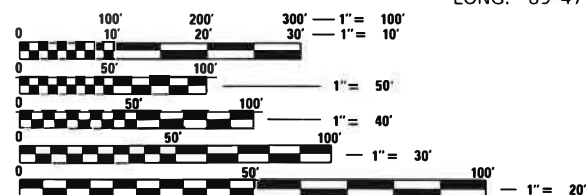
INDEX OF SHEETS

- 1 COVER
- 2 HIGHWAY STANDARDS, TRAFFIC MAP, MIX CHART, GENERAL NOTES & COMMITMENTS
- 3-9 SUMMARY OF QUANTITIES
- 10-11 TYPICAL SECTIONS
- 12-15 SCHEDULES OF QUANTITIES
- 16 LOCATION PLAN
- 17-19 GUARDRAIL PLAN
- 20-28 PAVEMENT MARKING PLAN
- 29-31 SIDEWALK RAMP DETAILS
- 32-33 TRAFFIC SIGNAL PLANS
- 34-38 DETECTOR LOOP REPLACEMENT PLANS
- 39 TRAFFIC CONTROL PLAN - STRUCTURE NO. 060-2514
- 40-42 STRUCTURE PLANS - BOX CULVERT EXTENSION STRUCTURE NO. 060-2514
- 43 GRADING AND EROSION CONTROL PLAN - STRUCTURE NO. 060-2514
- 44 MISCELLANEOUS CONSTRUCTION DETAILS



LOCATION OF SECTION INDICATED THIS: -

BEGIN PROJECT
STA 100+00
LAT: 38°42'58.28"N
LONG: 89°47'52.66"W

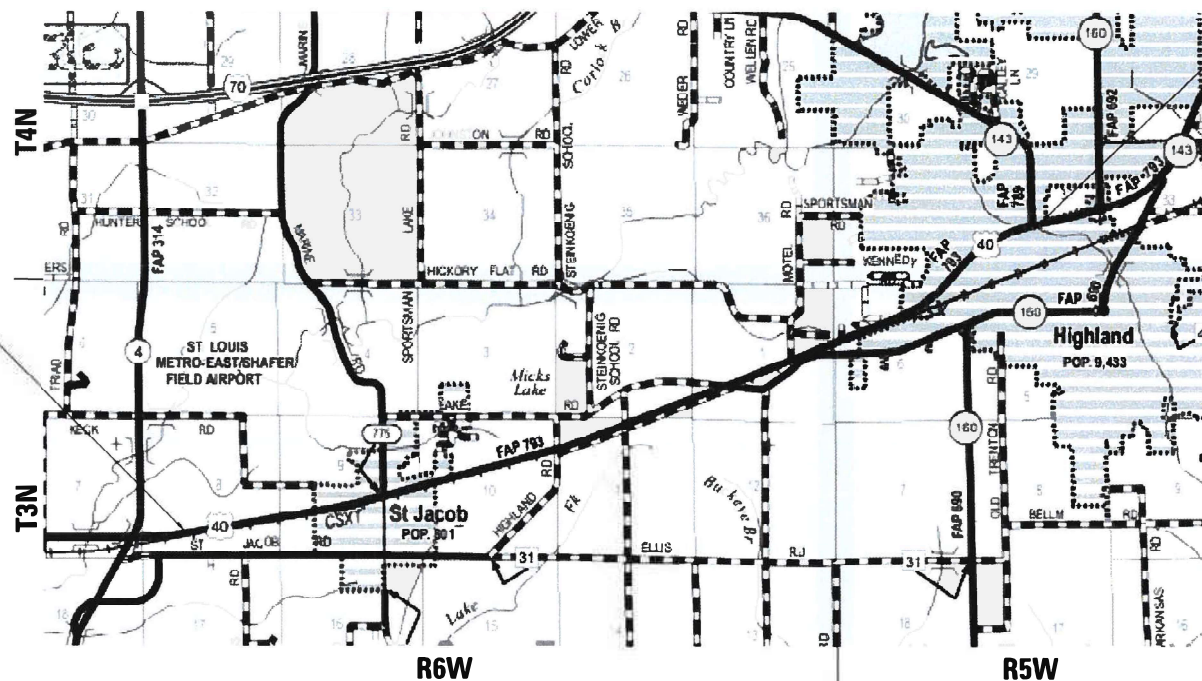


FULL SIZE PLANS HAVE BEEN PREPARED USING STANDARD ENGINEERING SCALES. REDUCED SIZED PLANS WILL NOT CONFORM TO STANDARD SCALES. IN MAKING MEASUREMENTS ON REDUCED PLANS, THE ABOVE SCALES MAY BE USED.

J.U.L.I.E.
JOINT UTILITY LOCATION INFORMATION FOR EXCAVATORS
1-800-892-0123
OR 811

PROJECT ENGINEER: BILLIE OWEN
PROJECT MANAGER: BRANDON HUMPHREYS

CONTRACT NO. 76M79



END PROJECT
462+98
LAT: 38°44'55.24"N
LONG: 89°40'45.59"W



LOCATION MAP
NOT TO SCALE

GROSS LENGTH = 36,298 FT. = 6.875 MILE
NET LENGTH = 36,298 FT. = 6.875 MILE

KENT J. SCHWIERJOHN, P.E.
IL LICENSED PROFESSIONAL ENGINEER NO. 062-066103
LICENSE EXPIRES NOVEMBER 30, 2023

STATE OF ILLINOIS
DEPARTMENT OF TRANSPORTATION

SUBMITTED Aug. 26, 2022
R. J. H. P.
REGIONAL ENGINEER

October 14, 2022
[Signature]
ENGINEER OF DESIGN AND ENVIRONMENT

October 14, 2022
[Signature]
DIRECTOR OF HIGHWAYS PROJECT IMPLEMENTATION

HMG ENGINEERS
HMG ENGINEERS, INC.
9360 HOLY CROSS LANE
BREESE, ILLINOIS 62230
888.HMG.ENGR

IL PROF. DESIGN FIRM NO. 184.000899

PRINTED BY THE AUTHORITY
OF THE STATE OF ILLINOIS

HIGHWAY STANDARDS

000001-08	STANDARD SYMBOLS, ABBREVIATIONS AND PATTERNS
001001-02	AREAS OF REINFORCEMENT BARS
001006	DECIMAL OF AN INCH AND OF A FOOT
424001-11	PERPENDICULAR CURB RAMPS FOR SIDEWALKS
424031-02	MEDIAN PEDESTRIAN CROSSINGS
442101-09	CLASS B PATCHES
606001-08	CONCRETE CURB TYPE B AND COMBINATION CONCRETE CURB AND GUTTER
606301-04	PC CONCRETE ISLANDS AND MEDIANS
630001-12	STEEL PLATE BEAM GUARDRAIL
630101-10	STRONG POST GUARDRAIL ATTACHED TO CULVERT
630106-02	LONG-SPAN GUARDRAIL OVER CULVERT
630301-09	SHOULDER WIDENING FOR TYPE 1 (SPECIAL) GUARDRAIL TERMINALS
642006-01	SHOULDER RUMBLE STRIPS, 8 IN.
701001-02	OFF-ROAD OPERATIONS, 2L, 2W, MORE THAN 15' (4.5 M) AWAY
701006-05	OFF-ROAD OPERATIONS, 2L, 2W, 15' (4.5 M) TO 24" (600 MM) FROM PAVEMENT EDGE
701011-04	OFF-ROAD MOVING OPERATIONS, 2L, 2W, DAY ONLY
701201-05	LANE CLOSURE, 2L, 2W, DAY ONLY, FOR SPEEDS ≥ 45 MPH
701301-04	LANE CLOSURE, 2L, 2W, SHORT TIME OPERATIONS
701306-04	LANE CLOSURE, 2L, 2W, SLOW MOVING OPERATIONS DAY ONLY, FOR SPEEDS ≥ 45 MPH
701311-03	LANE CLOSURE, 2L, 2W, MOVING OPERATIONS - DAY ONLY
701336-07	LANE CLOSURE, 2L, 2W, WORK AREAS IN SERIES, FOR SPEEDS ≥ 45 MPH
701501-06	URBAN LANE CLOSURE, 2L, 2W, UNDIVIDED
701701-10	URBAN LANE CLOSURE, MULTILANE INTERSECTION
701801-06	SIDEWALK, CORNER OR CROSSWALK CLOSURE
701901-08	TRAFFIC CONTROL DEVICES
704001-08	TEMPORARY CONCRETE BARRIER
725001-01	OBJECT AND TERMINAL MARKERS
780001-05	TYPICAL PAVEMENT MARKINGS
781001-04	TYPICAL APPLICATIONS RAISED REFLECTIVE PAVEMENT MARKERS
782001-01	CURB REFLECTORS
782006-01	GUARDRAIL AND BARRIER WALL REFLECTOR MOUNTING DETAILS
873001-02	TRAFFIC SIGNAL GROUNDING & BONDING
878001-11	CONCRETE FOUNDATION DETAILS
880006-01	TRAFFIC SIGNAL MOUNTING DETAILS
886001-01	DETECTOR LOOP INSTALLATIONS
886006-01	TYPICAL LAYOUT FOR DETECTION LOOPS

HIGHWAY STANDARDS CONT.

280001-07	TEMPORARY EROSION CONTROL SYSTEM
420001-10	PAVEMENT JOINTS
420701-03	PAVEMENT WELDED WIRE REINFORCEMENT
631011-10	TRAFFIC BARRIER TERMINAL, TYPE 2
720001-01	SIGN PANEL MOUNTING DETAILS

GENERAL NOTES

- UTILITIES KNOWN TO HAVE FACILITIES WITHIN THE PROJECT AREA:

AMEREN ILLINOIS	ELECTRIC
AT&T ILLINOIS	COMMUNICATIONS
BLUEBIRD NETWORK	COMMUNICATIONS
CHARTER COMMUNICATIONS, INC.	CABLE TV
CLEARWAVE COMMUNICATIONS	COMMUNICATIONS
DEPARTMENT OF CENTRAL MANAGEMENT SERVICES	COMMUNICATIONS
FRONTIER COMMUNICATIONS	COMMUNICATIONS
CITY OF HIGHLAND	WATER AND SANITARY SEWER
CITY OF HIGHLAND	ELECTRIC
CITY OF HIGHLAND	COMMUNICATIONS
HOME TELEPHONE COMPANY	COMMUNICATIONS
SOUTHWESTERN ELECTRIC COOPERATIVE, INC.	ELECTRIC
VILLAGE OF ST. JACOB	WATER AND SANITARY SEWER
TRI-TOWNSHIP WATER DISTRICT	WATER
ZAYO GROUP LLC	COMMUNICATIONS
- THE PROPOSED PAVEMENT MARKING SHALL MATCH THE LOCATIONS OF THE EXISTING PAVEMENT MARKING, AS DIRECTED BY THE ENGINEER.
- THE RESIDENT ENGINEER SHALL VERIFY THE EXISTENCE OF HIGHWAY LIGHTING AND/OR INTELLIGENT TRANSPORTATION SYSTEMS (I.T.S.) UTILITIES, AND/OR ELECTRICAL CABLES ASSOCIATED WITH TRAFFIC SIGNALS WITHIN THE PROJECT LIMITS. IF HIGHWAY LIGHTING AND/OR I.T.S. EXISTS WITHIN THE PROJECT LIMITS, AND IF THESE ITEMS REQUIRE RELOCATING, THE CONTRACTOR SHALL DO SO ACCORDING TO SECTION 803 OF THE STANDARD SPECIFICATIONS.
- THE DEPARTMENT STRONGLY ENCOURAGES THE PRIME CONTRACTOR AND THEIR APPROVED SUB-CONTRACTORS TO HIRE MINORITY, WOMEN AND DISADVANTAGED INDIVIDUALS FROM ITS FEDERALLY FUNDED HIGHWAY CONSTRUCTION CAREERS TRAINING PROGRAM (HCCTP) TO HELP MEET WORKFORCE AND TRAINEE GOALS. THIS PROGRAM IS TRAINING MINORITIES, WOMEN AND DISADVANTAGED INDIVIDUALS IN HIGHWAY CONSTRUCTION-RELATED SKILLS, E.G., MATH FOR THE TRADES, JOB READINESS, TECHNICAL SKILLS COURSEWORK (CARPENTRY, CONCRETE FLATWORK, BLUEPRINT READING, SITE PLANS, SITE WORK, TOOLS USE, ETC.) AND OSHA 10 HOUR CERTIFICATION, TO PREPARE THEM FOR A CAREER IN THE HIGHWAY CONSTRUCTION TRADES. GRADUATES ARE WELL-TRAINED AND READY TO BECOME PRODUCTIVE ENTRY-LEVEL CONSTRUCTION WORKERS. CONTACT THE DISTRICT 8 EEO OFFICE AT 618-346-3360 AND/OR THE HCCTP COORDINATOR AT 618-874-6528 TO LEARN MORE ABOUT THE PROGRAM AND FOR ASSISTANCE IN MEETING WORKFORCE AND TRAINEE GOALS.
- 10 CHANGEABLE MESSAGE SIGNS SHALL BE REQUIRED FOR THIS PROJECT. THEY SHALL BE PLACED 2 WEEKS PRIOR TO ANY LANE CLOSURE AND SHALL REMAIN FOR THE DURATION OF THE PROJECT. THE CHANGEABLE MESSAGE SIGNS SHALL BE PLACED ALONG US 40 (2), IL 143 (1), WALNUT ST IN HIGHLAND (1), HEMLOCK ST IN HIGHLAND (1), FRANK WATSON PKWY IN HIGHLAND (1), LAKE RD (1), HIGHLAND RD (1) AND N DOUGLAS ST IN ST. JACOB (2).
- THE CONTRACTOR SHALL PROVIDE POSITIVE AND ADEQUATE DRAINAGE AT ALL TIMES.
- ALL ELEVATIONS REFER TO THE USGS MEAN SEA LEVEL DATUM.
- ONLY SHORT TERM PAVEMENT MARKING REMOVAL FROM THE FINALL SURFACE SHALL BE PAID FOR AS "SHORT TERM PAVEMENT MARKING REMOVAL."
- THE CONTRACTOR SHALL BE AWARE THAT THERE MAY BE MANHOLES & VALVES LOCATED WITHIN THE RESURFACING LIMITS. CARE SHALL BE TAKEN TO IDENTIFY THESE ITEMS DURING MILLING OPERATIONS.
- ALL REMOVED GUARDRAIL COMPONENTS ARE THE PROPERTY OF THE CONTACTOR, AND THE SALVAGE VALUE OF SAID COMPONENTS SHALL BE REFLECTED IN THE CONTRACTOR'S BID.
- FACTORS FOR ESTIMATING PLAN QUANTITIES ARE AS FOLLOWS AND SHALL NOT BE USED FOR THE BASIS OF FINAL QUANTITIES:

HOT-MIX ASPHALT SURFACE COURSE	112 LBS/SQ YD/IN
AGGREGATE MATERIALS	2.05 TON/CU YD
- THE USE OF A MATERIAL TRANSFER DEVICE SHALL BE PERMITTED FOR THE PAVING OPERATIONS OF THIS PROJECT. THE MATERIAL TRANSFER DEVICE MAY OPERATE IN AN UNLOADED CONDITION WITH A MAXIMUM GROSS WEIGHT OF 40 TONS ON SN 060-2513 AND SN 060-2514.

MIX CHART

MIXTURE USE	SURFACE	BINDER	POLY SURFACE	SHOULDER (LOWER)	SHOULDER (SURFACE)
AC/PG	PG 64-22	PG 64-22	SBS PG 76-22	PG 64-22	PG 64-22
DESIGN AIR VOIDS	4.0% @ Ndes=70	4.0% @ Ndes=70	4.0% @ Ndes=70	4.0% @ Ndes=30	4.0% @ Ndes=30
MIX COMPOSITION (GRADATION)	IL 9.5	IL 9.5 FG	IL 9.5	IL 19.0L	IL 9.5L
FRICITION AGG	MIXTURE "D"	MIXTURE "C"	MIXTURE "D"		
QUALITY MGMT PROGRAM	QCP	QCP	QC/QA	QC/QA	QC/QA
MatTranDev Required?	YES	YES	NO	NO	NO

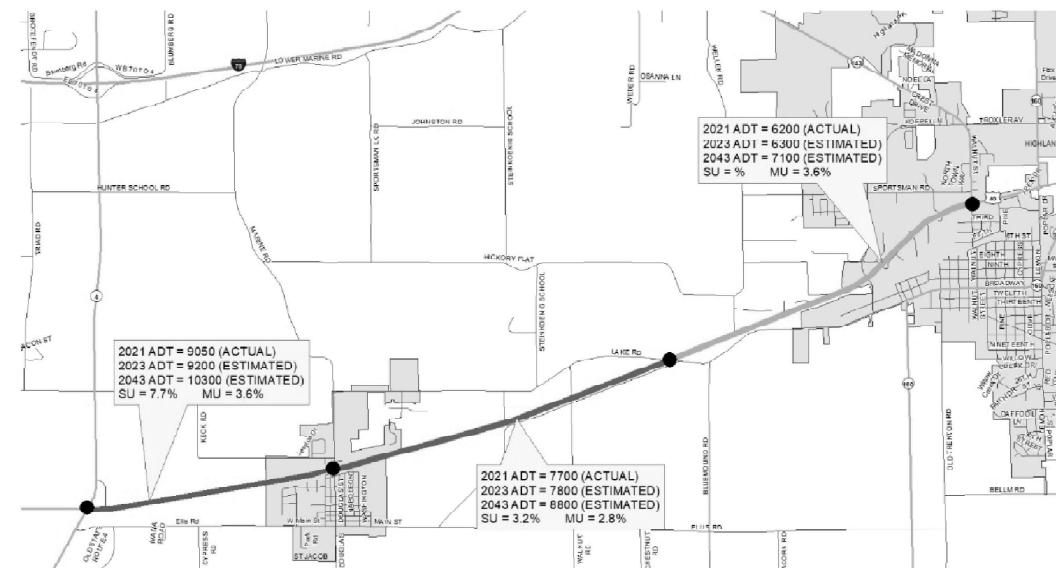
TURN LANES < 500 FEET			
MIXTURE USE	SURFACE	BINDER	POLY SURFACE
AC/PG	PG 64-22	PG 64-22	SBS PG 76-22
DESIGN AIR VOIDS	4.0% @ Ndes=70	4.0% @ Ndes=70	4.0% @ Ndes=70
MIX COMPOSITION (GRADATION)	IL 9.5	IL 19.0	IL 9.5
FRICITION AGG	MIXTURE "D"	MIXTURE "B"	MIXTURE "D"
QUALITY MGMT PROGRAM	QC/QA	QC/QA	QC/QA
MatTranDev Required?	NO	NO	NO

ANY QCP PAY ITEM THAT HAS A QUANTITY OF 1600 TONS OR LESS WILL HAVE TWO SUBLOTS EACH OF WHICH WILL BE HALF OF PLAN QUANTITY OR HALF OF THE ADJUSTED QUANTITY BY THE RESIDENT ENGINEER/TECHNICIAN.

COMMITMENTS

NONE

TRAFFIC MAP



REV. - MS

MODEL: Default
FILE NAME: H:\2026\DOT-D188-PTB194-0559\8066_100\1010_US40CAD_Sheets\DOT-D188-PTB194-0559\8066.dgn



USER NAME = kschwierjonn	DESIGNED -	REVISED -
	DRAWN -	REVISED -
PLOT SCALE = 100.0000' / in.	CHECKED -	REVISED -
PLOT DATE = 8/26/2022	DATE -	REVISED -

STATE OF ILLINOIS
DEPARTMENT OF TRANSPORTATION

HIGHWAY STANDARDS, TRAFFIC MAP, MIX CHART
GENERAL NOTES & COMMITMENTS

SCALE: SHEET 1 OF 1 SHEETS STA. TO STA.

F.A.P. RTE.	SECTION	COUNTY	TOTAL SHEETS	SHEET NO.
793	(R-1)RS-5	MADISON	44	2
CONTRACT NO. 76M79			ILLINOIS FED. AID PROJECT	

MODEL Path: \\... \DOT_Devel_PTB\194_059\8066_100_W\010_US\01CAD_5\Items\076M79-11-SC02.dgn
 FILE NAME: \\... \DOT_Devel_PTB\194_059\8066_100_W\010_US\01CAD_5\Items\076M79-11-SC02.dgn

CODE NO.	ITEM	UNIT	TOTAL QUANTITY	CONSTRUCTION CODE			
				80% FED ROADWAY	80% FED ROADWAY	80% FED SAFETY	80% FED SAFETY
				20% STATE ROADWAY	20% STATE ROADWAY	20% STATE SAFETY	20% STATE SAFETY
				0005 URBAN	0005 RURAL	0021 URBAN	0021 RURAL
50102400	CONCRETE REMOVAL	CU YD	9.2	9.2			
50200100	STRUCTURE EXCAVATION	CU YD	77	77			
50800105	REINFORCEMENT BARS	POUND	5080	5080			
50800205	REINFORCEMENT BARS, EPOXY COATED	POUND	460	460			
54002050	EXPANSION BOLTS 3/4 INCH X 9 INCH	EACH	32	32			
54003000	CONCRETE BOX CULVERTS	CU YD	23.4	23.4			
60604400	COMBINATION CONCRETE CURB AND GUTTER, TYPE B-6.18	FOOT	37			37	
60609800	COMBINATION CONCRETE CURB AND GUTTER, TYPE M-6.18	FOOT	86			86	
60618300	CONCRETE MEDIAN SURFACE, 4 INCH	SQ FT	189			189	
* 63000003	STEEL PLATE BEAM GUARDRAIL, TYPE A, 9 FOOT POSTS	FOOT	1012.5	775	237.5		
* 63000030	STRONG POST GUARDRAIL ATTACHED TO CULVERT	FOOT	87.5	87.5			
* 63000350	LONG-SPAN GUARDRAIL OVER CULVERT, 12 FT 6 IN SPAN	FOOT	37.5		37.5		
* 63000370	LONG-SPAN GUARDRAIL OVER CULVERT, 25 FT SPAN	FOOT	100	100			
* 63100045	TRAFFIC BARRIER TERMINAL, TYPE 2	EACH	3	3			

* SPECIALTY ITEM



USER NAME = kschwierjohn
 PLOT SCALE = 20,0000' / in.
 PLOT DATE = 8/26/2022

DESIGNED -
 DRAWN -
 CHECKED -
 DATE -

REVISED -
 REVISED -
 REVISED -
 REVISED -

STATE OF ILLINOIS
DEPARTMENT OF TRANSPORTATION

SUMMARY OF QUANTITIES

SCALE: SHEET 3 OF 7 SHEETS STA. TO STA.

F.A.P. RTE.	SECTION	COUNTY	TOTAL SHEETS	SHEET NO.
793	(R-1)RS-5	MADISON	44	5
CONTRACT NO. 76M79			ILLINOIS FED. AID PROJECT	

MODEL: D:\m\h\...
 FILE NAME: I:\3066...
 I:\3066...DOT...PTB194...0598066...100...WORLD...US40CAD...SHEETSD76M79-11-C500.dgn

CODE NO.	ITEM	UNIT	TOTAL QUANTITY	CONSTRUCTION CODE			
				80% FED ROADWAY	80% FED ROADWAY	80% FED SAFETY	80% FED SAFETY
				20% STATE	20% STATE	20% STATE	20% STATE
				0005	0005	0021	0021
				URBAN	RURAL	URBAN	RURAL
70300100	SHORT TERM PAVEMENT MARKING	FOOT	10908	3233	7675		
70300150	SHORT TERM PAVEMENT MARKING REMOVAL	SQ FT	1200	356	844		
70300211	TEMPORARY PAVEMENT MARKING LETTERS AND SYMBOLS - PAINT	SQ FT	561	468	93		
70300221	TEMPORARY PAVEMENT MARKING - LINE 4"- PAINT	FOOT	104783	40589	64194		
70300241	TEMPORARY PAVEMENT MARKING - LINE 6"- PAINT	FOOT	489	489			
70300251	TEMPORARY PAVEMENT MARKING - LINE 8"- PAINT	FOOT	834	658	176		
70300261	TEMPORARY PAVEMENT MARKING - LINE 12"- PAINT	FOOT	993	909	84		
70300281	TEMPORARY PAVEMENT MARKING - LINE 24"- PAINT	FOOT	411	342	69		
70400100	TEMPORARY CONCRETE BARRIER	FOOT	63	63			
70400125	PINNING TEMPORARY CONCRETE BARRIER	EACH	9	9			
70600260	IMPACT ATTENUATORS, TEMPORARY (FULLY REDIRECTIVE, NARROW), TEST LEVEL 3	EACH	2	2			
* 72000100	SIGN PANEL - TYPE 1	SQ FT	1.8			1.8	
* 72501000	TERMINAL MARKER - DIRECT APPLIED	EACH	11	9	2		
* 78000100	THERMOPLASTIC PAVEMENT MARKING - LETTERS AND SYMBOLS	SQ FT	561	468	93		
* 78000200	THERMOPLASTIC PAVEMENT MARKING - LINE 4"	FOOT	104783	40589	64194		

* SPECIALTY ITEM

REV. - MS



USER NAME = kschwierjohn	DESIGNED -	REVISED -
PLOT SCALE = 20.0000' / in.	DRAWN -	REVISED -
PLOT DATE = 8/26/2022	CHECKED -	REVISED -
	DATE -	REVISED -

STATE OF ILLINOIS
DEPARTMENT OF TRANSPORTATION

SUMMARY OF QUANTITIES			
SCALE:	SHEET 5	OF 7 SHEETS	STA. TO STA.


F.A.P. RTE. 793	SECTION (R-1)RS-5	COUNTY MADISON	TOTAL SHEETS 44	SHEET NO. 7
CONTRACT NO. 76M79			ILLINOIS FED. AID PROJECT	

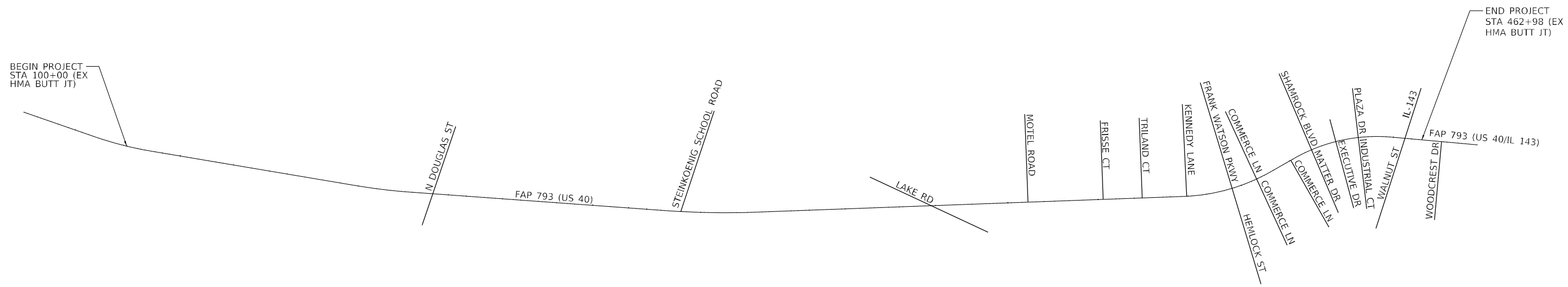
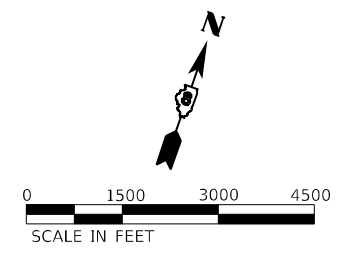
MODEL: D:\h\j\l
 FILE NAME: I183066_100_WC10_US40\CAD_Sheets\076M79-11-C500.dgn

CODE NO.	ITEM	UNIT	TOTAL QUANTITY	CONSTRUCTION CODE				
				80% FED ROADWAY	80% FED ROADWAY	80% FED SAFETY	80% FED SAFETY	
				20% STATE	20% STATE	20% STATE	20% STATE	
				0005	0005	0021	0021	
				URBAN	RURAL	URBAN	RURAL	
* 78000400	THERMOPLASTIC PAVEMENT MARKING - LINE 6"	FOOT	489	489				
* 78000500	THERMOPLASTIC PAVEMENT MARKING - LINE 8"	FOOT	834	658	176			
* 78000600	THERMOPLASTIC PAVEMENT MARKING - LINE 12"	FOOT	993	909	84			
* 78000650	THERMOPLASTIC PAVEMENT MARKING - LINE 24"	FOOT	411	342	69			
* 78100100	RAISED REFLECTIVE PAVEMENT MARKER	EACH	730	371	359			
* 78200005	GUARDRAIL REFLECTORS, TYPE A	EACH	23	18	5			
* 78200020	CURB REFLECTORS	EACH	28	14		14		
	78300200	RAISED REFLECTIVE PAVEMENT MARKER REMOVAL	EACH	730	371	359		
	78300201	PAVEMENT MARKING REMOVAL - GRINDING	SQ FT	38073	16243	21830		
* 81028370	UNDERGROUND CONDUIT, PVC, 3" DIA.	FOOT	5			5		
* 87301215	ELECTRIC CABLE IN CONDUIT, SIGNAL NO. 14 2C	FOOT	110			110		
* 87301225	ELECTRIC CABLE IN CONDUIT, SIGNAL NO. 14 3C	FOOT	117			117		
* 87301900	ELECTRIC CABLE IN CONDUIT, EQUIPMENT GROUNDING CONDUCTOR, NO. 6 1C	FOOT	15			15		
* 87800100	CONCRETE FOUNDATION, TYPE A	FOOT	3			3		

* SPECIALTY ITEM

REV. - MS

 IL PROF DESIGN FIRM 184.000899	USER NAME = kschwierjohn	DESIGNED -	REVISED -	STATE OF ILLINOIS DEPARTMENT OF TRANSPORTATION	SUMMARY OF QUANTITIES			F.A.P. RTE.	SECTION	COUNTY	TOTAL SHEETS	SHEET NO.	
	PLOT SCALE = 20.0000' / in.	DRAWN -	REVISED -					793	(R-1)RS-5	MADISON	44	8	
	PLOT DATE = 8/26/2022	CHECKED -	REVISED -		SCALE:			SHEET 6	OF 7 SHEETS	STA.	TO STA.	ILLINOIS FED. AID PROJECT	
		DATE -	REVISED -										



LOCATION

STA. 185+77.25	N DOUGLAS STREET
STA. 254+55.93	STEINKOENIG SCHOOL ROAD
STA. 323+95.20	LAKE ROAD
STA. 350+72.69	MOTEL ROAD
STA. 371+54.22	FRISSE COURT
STA. 382+33.90	TRILAND COURT
STA. 394+65.47	KENNEDY LANE
STA. 407+45.54	FRANK WATSON PARKWAY - NORTH
STA. 407+45.54	HEMLOCK STREET - SOUTH
STA. 414+70.44	COMMERCE LANE - NORTH
STA. 414+70.44	COMMERCE LANE - SOUTH
STA. 425+47.10	COMMERCE LANE - SOUTH
STA. 431+91.67	SHAMROCK BLVD
STA. 431+91.67	MATTER DRIVE
STA. 439+06.64	EXECUTIVE DRIVE
STA. 445+36.93	PLAZA DRIVE - NORTH
STA. 445+36.93	INDUSTRIAL COURT - SOUTH
STA. 458+28.40	IL 143 - NORTH
STA. 458+25.40	WALNUT STREET - SOUTH
STA. 468+47.07	WOODCREST DRIVE

URBAN / RURAL LIMITS

US 40:
STA. 100+00 TO STA. 176+00 (RURAL)
STA. 176+00 TO STA. 185+76 (URBAN)
STA. 185+76 TO STA. 196+00 (URBAN)
STA. 196+00 TO STA. 319+00 (RURAL)
STA. 319+00 TO STA. 324+15 (RURAL)
STA. 324+15 TO STA. 398+00 (RURAL)
STA. 398+00 TO STA. 407+44 (URBAN)
STA. 407+44 TO STA. 416+76 (URBAN)
STA. 416+76 TO STA. 441+24 (URBAN)
STA. 441+24 TO STA. 448+84 (URBAN)
STA. 448+84 TO STA. 457+06 (URBAN)
STA. 457+06 TO STA. 459+59 (URBAN)
STA. 459+59 TO STA. 468+98 (URBAN)
IL 143:
156' SOUTH OF US 40 C (URBAN)
273' NORTH OF US 40 C (URBAN)

MODEL: P:\p\h\h...
 FILE NAME: I:\US066...
 I:\US066_100\1\0\10_15\10\CAD_Sheets\076M79-1\locatba.dgn



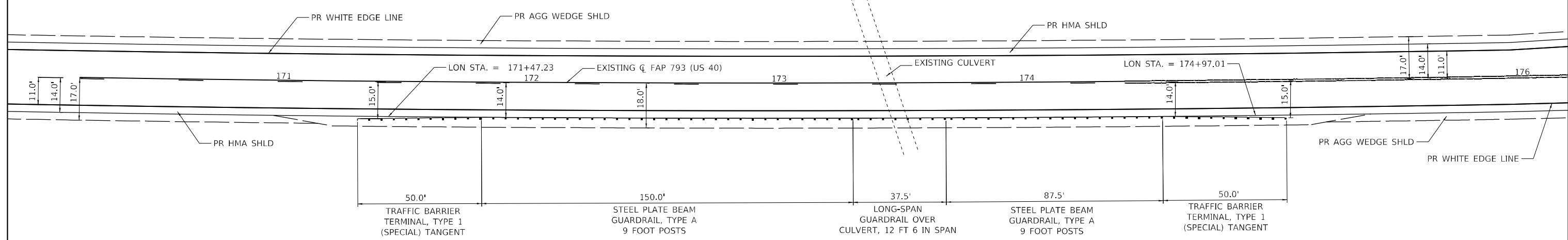
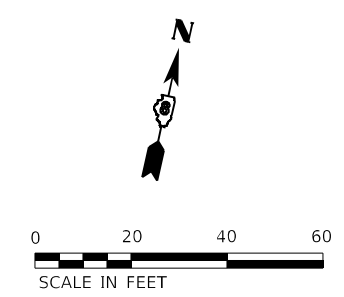
USER NAME = kschwierjohn	DESIGNED -	REVISED -
PLOT SCALE = 3000,0000 ' / in.	DRAWN -	REVISED -
PLOT DATE = 8/26/2022	CHECKED -	REVISED -
	DATE -	REVISED -

**STATE OF ILLINOIS
DEPARTMENT OF TRANSPORTATION**

LOCATION PLAN

SCALE: SHEET 1 OF 1 SHEETS STA. TO STA.

F.A.P. RTE.	SECTION	COUNTY	TOTAL SHEETS	SHEET NO.
793	(R-1)RS-5	MADISON	44	16
CONTRACT NO. 76M79				
ILLINOIS FED. AID PROJECT				



NOTE:
 CONTRACTOR SHALL CENTER LONG-SPAN GUARDRAIL OVER CULVERT, 12 FOOT 6 INCH SPAN OVER EXISTING CULVERT AND THEN CONSTRUCT GUARDRAIL IN BOTH DIRECTIONS FROM THAT POINT.

ALL DIMENSIONS SHOWN AT GUARDRAIL ARE TO THE FACE OF GUARDRAIL.

ALL EXISTING GUARDRAIL SHALL BE REMOVED, HOWEVER ONLY PROPOSED GUARDRAIL IS SHOWN. SEE GUARDRAIL SCHEDULE.

MODEL: D:\hmg\11\DOT_DWG\PTB194_059\8066_100_W\010_USA\01CAD_Sheets\076M79-Str-Guardrail_1.dgn
 FILE NAME: 11\8066_100\DOT_DWG\PTB194_059\8066_100_W\010_USA\01CAD_Sheets\076M79-Str-Guardrail_1.dgn



USER NAME = kschwierjohn	DESIGNED -	REVISED -
PLOT SCALE = 40,000' / in.	DRAWN -	REVISED -
PLOT DATE = 8/26/2022	CHECKED -	REVISED -
	DATE -	REVISED -

**STATE OF ILLINOIS
 DEPARTMENT OF TRANSPORTATION**

**GUARDRAIL PLAN
 LOCATION #1**

SCALE: SHEET 1 OF 3 SHEETS STA. TO STA.

F.A.P. RTE. 793	SECTION (R-1)RS-5	COUNTY MADISON	TOTAL SHEETS 44	SHEET NO. 17
CONTRACT NO. 76M79			ILLINOIS FED. AID PROJECT	



MATCHLINE STA 410+00.00

PAVEMENT MARKING,
SOLID WHITE LINE - 4"
RRPM, ONE-WAY CRYSTAL
40' SPACING

PAVEMENT MARKING,
6'-2' SKIP DASH WHITE LINE - 4"

PAVEMENT MARKING,
WHITE EDGE LINE - 4"

EXISTING C FAP 793 (US 40)

411

412

413

414

PAVEMENT MARKING,
WHITE EDGE LINE - 4"

PAVEMENT MARKING,
SOLID WHITE TURN ARROW

PAVEMENT MARKING,
DOUBLE SOLID YELLOW LINE - 4"
RRPM, ONE-WAY AMBER
40' SPACING

PAVEMENT MARKING,
SOLID YELLOW LINE - 12"

LEGEND	
	MILLING LIMITS

COMMERCE LANE

COMMERCE LANE

MODEL Path:\hmg\FILE NAME: ILL03066_100_WC10_US40CAD_Sheets\076M79-shc-Scrip\p0_6.dgn



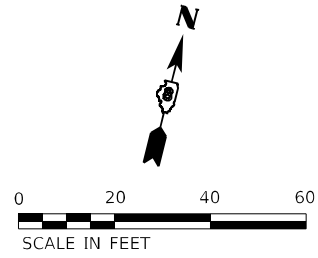
USER NAME = kschwierjohn	DESIGNED -	REVISED -
PLOT SCALE = 40,000' / in.	DRAWN -	REVISED -
PLOT DATE = 8/26/2022	CHECKED -	REVISED -
	DATE -	REVISED -

**STATE OF ILLINOIS
DEPARTMENT OF TRANSPORTATION**

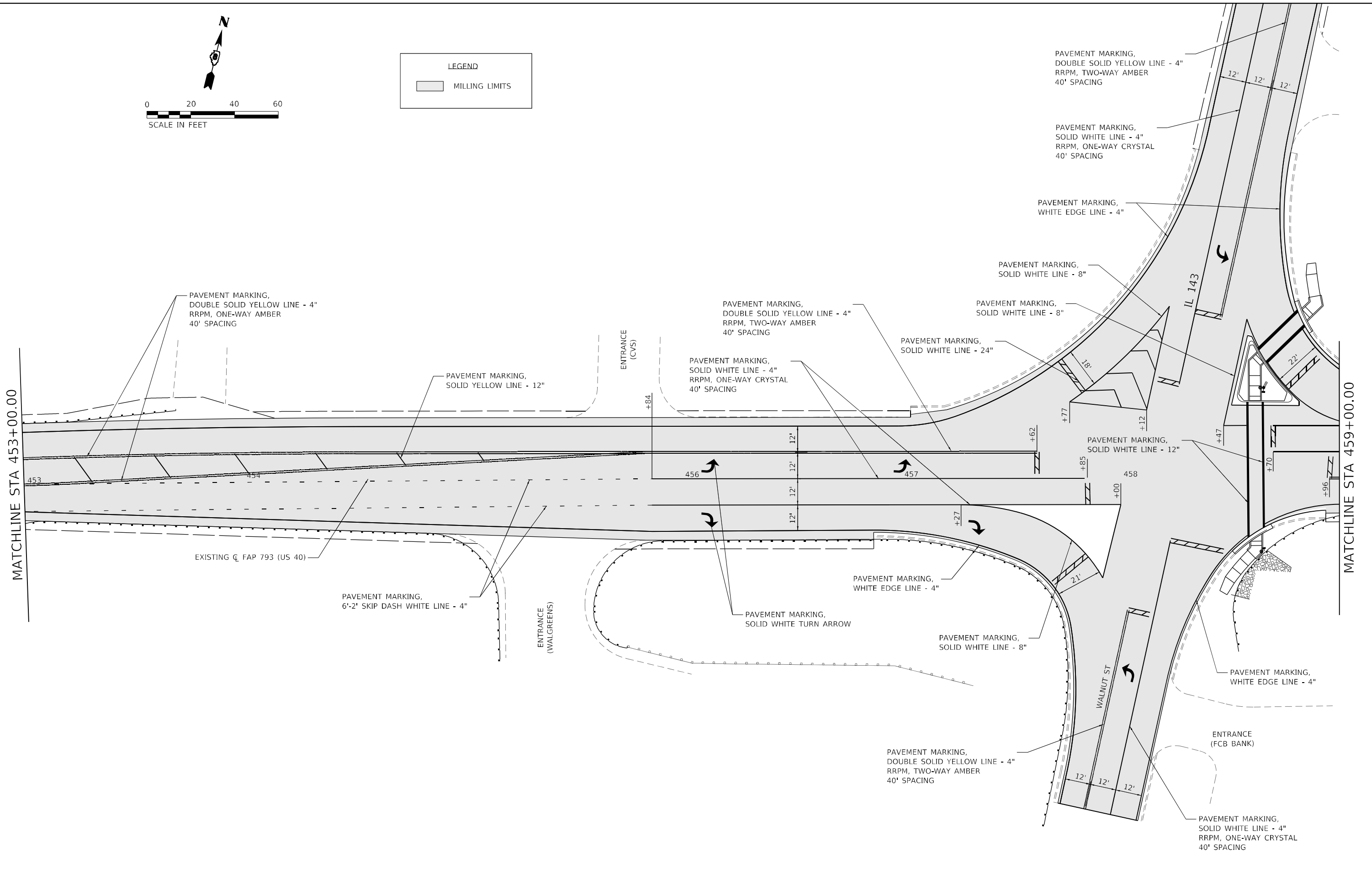
**PAVEMENT MARKING PLAN
US 40 / COMMERCE LN**

SCALE: SHEET 6 OF 9 SHEETS STA. TO STA.

F.A.P. RTE. 793	SECTION (R-1)RS-5	COUNTY MADISON	TOTAL SHEETS 44	SHEET NO. 25
			CONTRACT NO. 76M79	
ILLINOIS FED. AID PROJECT				



LEGEND	
	MILLING LIMITS



MODEL: Default
 FILE NAME: I:\3066_100_W\010_US40\CAD_Sheets\076M79-shc-Str\pmp_8.dgn



USER NAME	= kschwierjohn
PLOT SCALE	= 40,000' / in.
PLOT DATE	= 8/26/2022

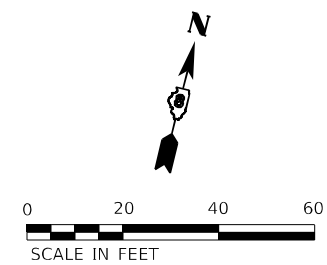
DESIGNED -	REVISD -
DRAWN -	REVISD -
CHECKED -	REVISD -
DATE -	REVISD -

STATE OF ILLINOIS
DEPARTMENT OF TRANSPORTATION

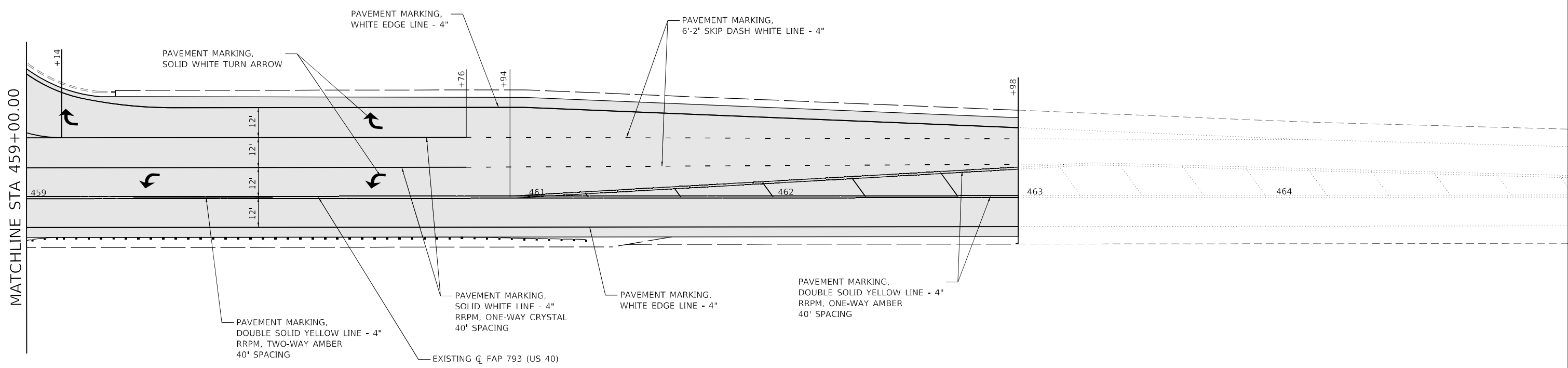
PAVEMENT MARKING PLAN
US 40 / IL 143

SCALE: SHEET 8 OF 9 SHEETS STA. TO STA.

F.A.P. RTE.	SECTION	COUNTY	TOTAL SHEETS	SHEET NO.
793	(R-1)RS-5	MADISON	44	27
CONTRACT NO. 76M79			ILLINOIS FED. AID PROJECT	



LEGEND	
	MILLING LIMITS



MODEL: P:\d\h\h
 FILE NAME: I:\US066_100\100\100\100\100\CAD_Sheets\076M79-shc-Scrip\9.dgn



USER NAME = kschwierjohn	DESIGNED -	REVISED -
PLOT SCALE = 40,000' / in.	DRAWN -	REVISED -
PLOT DATE = 8/26/2022	CHECKED -	REVISED -
	DATE -	REVISED -

STATE OF ILLINOIS
DEPARTMENT OF TRANSPORTATION

PAVEMENT MARKING PLAN
US 40 / IL 143



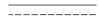
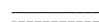






SCALE: SHEET 9 OF 9 SHEETS STA. TO STA.

F.A.P. RTE.	SECTION	COUNTY	TOTAL SHEETS	SHEET NO.
793	(R-1)RS-5	MADISON	44	28
CONTRACT NO. 76M79				
ILLINOIS FED. AID PROJECT				

TRAFFIC SIGNAL GENERAL NOTES

- PRIOR TO COMMENCING CONSTRUCTION OF ANY COMPONENT OF THE PROPOSED TRAFFIC SIGNAL SYSTEM, ALL UNDERGROUND UTILITIES SHALL BE FIELD LOCATED ACCORDING TO ARTICLE 107.39 OF THE "STANDARD SPECIFICATIONS FOR ROAD AND BRIDGE CONSTRUCTION". AGENCIES KNOWN TO HAVE FACILITIES WITHIN THE PROJECT LIMITS ARE LISTED IN THE GENERAL NOTES OF THE PLANS.
- NEW MOUNTING HARDWARE AND BRACKETS SHALL BE USED FOR ALL PROPOSED TRAFFIC SIGNAL EQUIPMENT AND ON THE TRAFFIC SIGNAL POLE TO BE RELOCATED.
- MOUNTING HARDWARE, EXCEPT WHERE NOTED, SHALL BE UNPAINTED ALUMINUM. ALL BOLTS, SCREWS, NUTS, AND WASHERS SHALL BE STAINLESS STEEL. ANTI-SEIZE PASTE COMPOUND SHALL BE USED ON ALL MOUNTING HARDWARE FIELD CONNECTIONS.
- EXTENSION ARMS MAY BE NECESSARY TO INSTALL THE ACCESSIBLE PEDESTRIAN SIGNAL PUSH BUTTONS TO MEET ADA POLICY. THE COST FOR THE EXTENSION ARMS SHALL BE INCLUDED IN THE UNIT PRICE FOR ACCESSIBLE PEDESTRIAN SIGNALS.
- ALL TRAFFIC SIGNAL CABLES SHALL BE #14 AWG STRANDED COPPER UNLESS OTHERWISE SPECIFIED. TERMINAL ENDS SHALL HAVE CRIMPED-ON RING TONGUE CONNECTORS.
- THE PROPOSED LOCATION OF SIGNAL PUSH BUTTONS AND PEDESTRIAN SIGNAL HEADS SHALL BE APPROVED BY THE ENGINEER BEFORE INSTALLATION.
- IF THERE IS NOT SUFFICIENT SLACK TO RELOCATE EXISTING PEDESTRIAN SIGNAL HEADS OR PUSH BUTTONS; REMOVE ELECTRIC CABLE FROM CONDUIT QUANTITY HAS BEEN INCLUDED TO REMOVE THE TRAFFIC SIGNAL CABLE ONLY FOR THE RESPECTIVE EQUIPMENT AND INSTALL NEW TRAFFIC SIGNAL CABLE IN THE EXISTING CONDUIT.
- EXISTING NO. 6, EQUIPMENT GROUNDING CABLE IS NOT INTENDED TO BE REMOVED WITH SIGNAL CABLE WHEN RELOCATING TRAFFIC SIGNAL EQUIPMENT.

TRAFFIC SIGNAL LEGEND

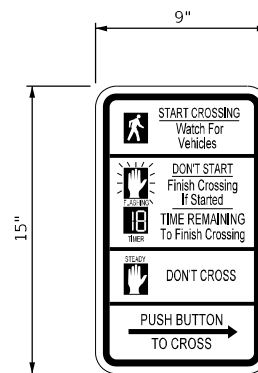
	EXISTING HANDHOLE
	EXISTING DOUBLE HANDHOLE
	EXISTING CONDUIT
	PROPOSED CONDUIT
	EXISTING SIGNAL HEAD, PEDESTRIAN
	EXISTING PEDESTRIAN PUSH BUTTON DETECTOR
	EXISTING CONTROLLER
	EXISTING SIGNAL POST
	PROPOSED SIGNAL HEAD, PEDESTRIAN
	PROPOSED APS PEDESTRIAN PUSH BUTTON

TRAFFIC SIGNAL BILL OF MATERIALS

CODE NO.	ITEM	UNIT	TOTAL QUANTITIES
72000100	SIGN PANEL - TYPE 1	SQ FT	1.8
81028370	UNDERGROUND CONDUIT, PVC, 3" DIA.	FOOT	5
87301215	ELECTRIC CABLE IN CONDUIT, SIGNAL NO. 14 2C	FOOT	110
87301225	ELECTRIC CABLE IN CONDUIT, SIGNAL NO. 14 3C	FOOT	117
87301900	ELECTRIC CABLE IN CONDUIT, EQUIPMENT GROUNDING CONDUCTOR, NO. 6 1C	FOOT	15
87800100	CONCRETE FOUNDATION, TYPE A	FOOT	3
88102719	PEDESTRIAN SIGNAL HEAD, LED, 1-FACE, POST MOUNTED WITH COUNTDOWN TIMER	EACH	2
89501150	RELOCATE EXISTING TRAFFIC SIGNAL POST	EACH	1
89502200	MODIFY EXISTING CONTROLLER	EACH	1
89502300	REMOVE ELECTRIC CABLE FROM CONDUIT	FOOT	226
89502375	REMOVE EXISTING TRAFFIC SIGNAL EQUIPMENT	EACH	1
89502385	REMOVE EXISTING CONCRETE FOUNDATION	EACH	1
X8140205	MODIFY EXISTING CONCRETE HANDHOLE	EACH	1
X8760200	ACCESSIBLE PEDESTRIAN SIGNALS	EACH	2

STANDARDS FOR TRAFFIC SIGNAL SHEETS

720001	SIGN PANEL MOUNTING DETAILS
873001	TRAFFIC SIGNAL GROUNDING & BONDING
878001	CONCRETE FOUNDATION DETAILS
880006	TRAFFIC SIGNAL MOUNTING DETAILS



ACCESSIBLE PEDESTRIAN SIGNAL SIGN

R10-3e

(A)

MODEL Path: \\... FILE NAME: ...

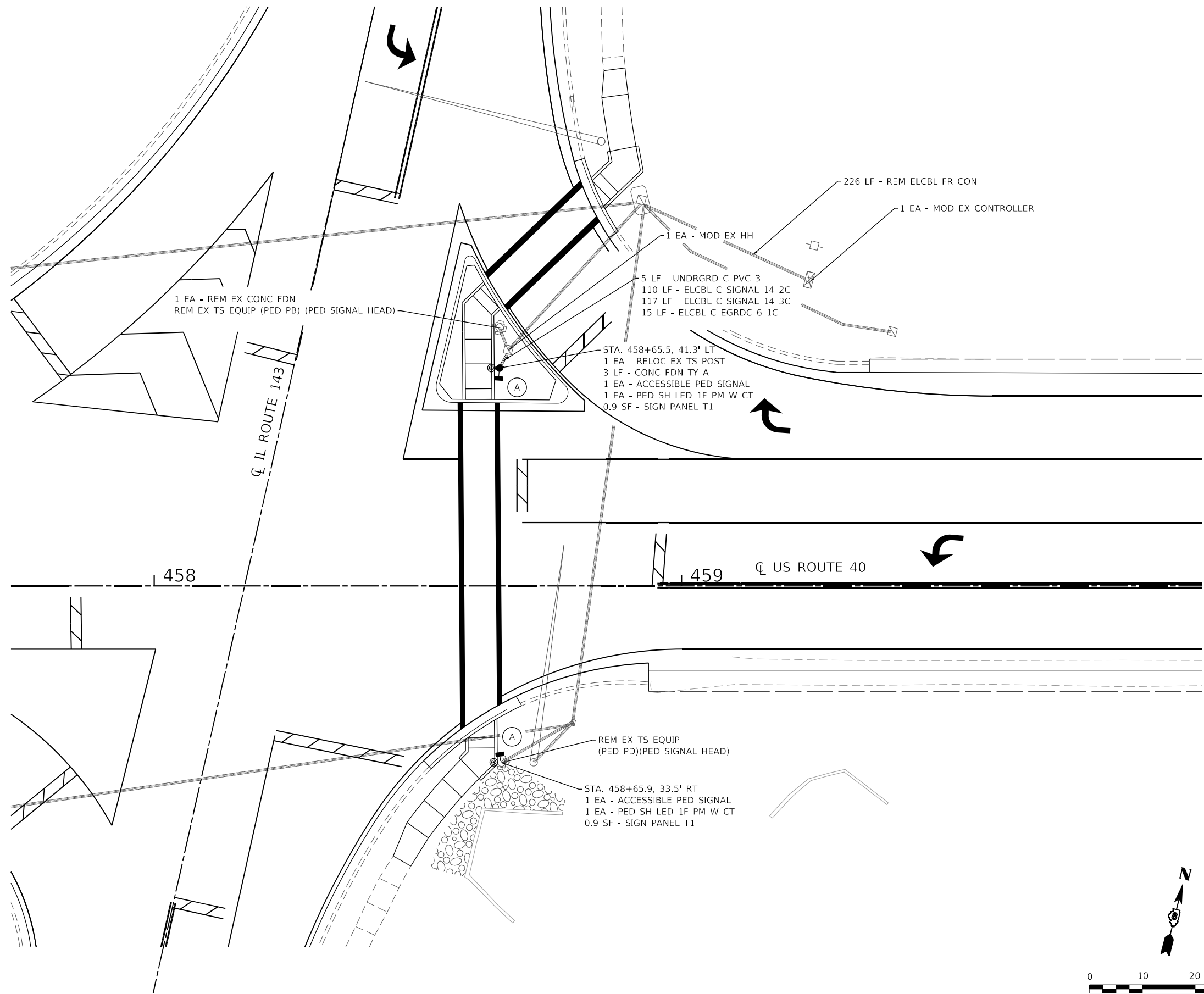
HMG
ENGINEERS
IL PROF DESIGN FIRM 184,000899

USER NAME = bratermann	DESIGNED -	REVISED -
PLOT SCALE = 10,000' / in.	DRAWN -	REVISED -
PLOT DATE = 8/25/2022	CHECKED -	REVISED -
	DATE -	REVISED -

STATE OF ILLINOIS
DEPARTMENT OF TRANSPORTATION

TRAFFIC SIGNAL SHEETS	
SCALE: NTS	SHEET 1 OF 2 SHEETS STA. TO STA.

F.A.P. RTE. 793	SECTION (R-1)RS-5	COUNTY MADISON	TOTAL SHEETS 44	SHEET NO. 32
CONTRACT NO. 76M79				
ILLINOIS FED. AID PROJECT				



MODEL: Default
 FILE NAME: I:\3066_1\DOT_DWG_PTB\194_059\8066_100_W\10_15\10\CAD_Sheets\076M79-11-Traffic-Signal.dgn



USER NAME	= bratermann
PLOT SCALE	= 20,000' / in.
PLOT DATE	= 8/25/2022

DESIGNED	-
DRAWN	-
CHECKED	-
DATE	-

REVISED	-
REVISED	-
REVISED	-
REVISED	-

STATE OF ILLINOIS
DEPARTMENT OF TRANSPORTATION

TRAFFIC SIGNAL SHEETS

SCALE: 1" = 20' SHEET 2 OF 2 SHEETS STA. TO STA.

F.A.P. RTE.	SECTION	COUNTY	TOTAL SHEETS	SHEET NO.
793	(R-1)RS-5	MADISON	44	33
CONTRACT NO. 76M79				
ILLINOIS FED. AID PROJECT				

NOTES:

SEE TABLE "DETECTOR LOOP REQUIREMENTS AND CALCULATIONS" FOR LOOP SIZE AND CALCULATED NUMBER OF TURNS.
SEE "DETAIL A" FOR INSTALLING DETECTOR LOOP WIRES IN EXISTING CONDUITS.

SCHEDULE OF QUANTITIES			TOTAL QUANTITIES	US 40 & IL 143	US 40 & F. W. PRKWY. / HEMLOCK ST.	US 40 & DOUGLAS ST. / MARINE RD.
CODE NO	ITEM	UNIT				
88600600	DETECTOR LOOP REPLACEMENT	FOOT	5289	2193	787	2309

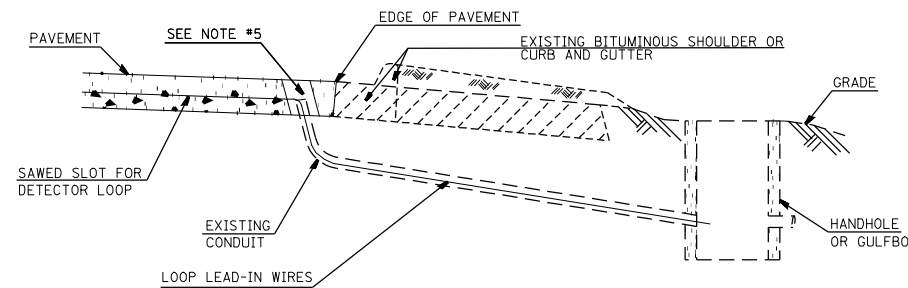
DETECTOR LOOP REQUIREMENTS AND CALCULATIONS FOR IL 143/US 40 & N. DOUGLAS ST. (CR 2670E)					
LOOP#	PHASE#	LOOP SIZE (FT. X FT.)	REQUIRED # OF TURNS	CALCULATED INDUCTANCE MICROHENRIES	CALCULATED RESISTANCE OHMS
1. EB CCO	6	6' x 6'	7	507.27	3.63
2. EB LT CD	1	6' x 50'(Q)	3-6-3	851.78	3.00
3. EB THRU CD	6	6' x 50'(Q)	3-6-3	849.14	3.03
4. EB RT CD	6	6' x 50'(Q)	3-6-3	847.16	2.98
5. NB RR THRU 1 CD	4	6' x 50'(Q)	3-6-3	855.74	3.18
6. NB RR THRU 2 CD	4	6' x 50'(Q)	3-6-3	855.30	3.17
7. NB THRU CD	4	6' x 50'(Q)	3-6-3	823.40	2.44
8. NB RT CD	4	6' x 6'	6	813.94	2.23
9. WB CCO	2	6' x 50'(Q)	3-6-3	351.46	2.56
10. WB LT CD	5	6' x 50'(Q)	3-6-3	801.84	1.95
11. WB THRU CD	2	6' x 50'(Q)	3-6-3	798.54	1.85
12. WB RT CD	2	6' x 6'	6	796.56	1.83
13. SB CCO	3	6' x 50'(Q)	3-6-3	824.00	2.34
14. SB THRU CD	3	6' x 50'(Q)	3-6-3	824.50	2.47
15. SB RT CD	3	6' x 45'(Q)	3-6-3	747.08	2.26

DETECTOR LOOP REQUIREMENTS AND CALCULATIONS FOR IL 143/US 40 & FRANK WATSON PRKWY_HEMLOCK ST.					
LOOP#	PHASE#	LOOP SIZE (FT. X FT.)	REQUIRED # OF TURNS	CALCULATED INDUCTANCE MICROHENRIES	CALCULATED RESISTANCE OHMS
1. SB CCO	8	6' x 6'	6	374.12	3.07
2. SB LT CD	3	6' x 50'(Q)	3-6-3	853.10	3.12
3. SB THRU CD	8	6' x 50'(Q)	3-6-3	850.46	3.06
4. EB CCO	6	6' x 6'	7	514.31	3.79
5. EB LT CD	1	6' x 50'(Q)	3-6-3	854.86	3.16
6. EB THRU CD	6	6' x 50'(Q)	3-6-3	852.66	3.11
7. EB RT CD	6	6' x 50'(Q)	3-6-3	849.80	3.04
8. NB LT CD	7	6' x 50'(Q)	3-6-3	823.40	2.44
9. NB THRU CD	4	6' x 50'(Q)	3-6-3	820.98	2.39
10. NB RT CD	4	6' x 50'(Q)	3-6-3	818.12	2.32
11. WB CCO	2	6' x 6'	6	375.44	3.10
12. WB LT CD	2	6' x 50'(Q)	3-6-3	816.58	2.29
13. WB THRU CD	5	6' x 50'(Q)	3-6-3	815.04	2.25

DETECTOR LOOP REQUIREMENTS AND CALCULATIONS FOR IL 143/US 40 & WALNUT ST./IL 143					
LOOP#	PHASE#	LOOP SIZE (FT. X FT.)	REQUIRED # OF TURNS	CALCULATED INDUCTANCE MICROHENRIES	CALCULATED RESISTANCE OHMS
1. EB CCO	2	6' x 6'	7	512.11	3.74
2. EB LT CD	5	6' x 50'(Q)	3-6-3	859.70	3.27
3. EB THRU CD	2	6' x 50'(Q)	3-6-3	857.28	3.21
4. EB RT CD	2	6' x 50'(Q)	3-6-3	853.76	3.13
5. NB CCO	8	6' x 6'	6	355.20	2.64
6. NB LT CD	3	6' x 50'(Q)	3-6-3	838.36	2.78
7. NB THRU CD	8	6' x 50'(Q)	3-6-3	828.90	2.57
8. WB CCO	6	6' x 6'	6	351.90	2.57
9. WB LT CD	1	6' x 50'(Q)	3-6-3	817.68	2.31
10. WB THRU CD	6	6' x 50'(Q)	3-6-3	818.34	2.33
11. WB RT CD	6	6' x 50'(Q)	3-6-3	799.42	1.90
12. SB CCO	4	6' x 6'	6	339.80	2.29
13. SB LT CD	7	6' x 50'(Q)	3-6-3	812.40	2.19
14. SB THRU CD	4	6' x 50'(Q)	3-6-3	821.42	2.40
15. SB RT CD	4	6' x 50'(Q)	3-6-3	837.92	2.77

THE ABOVE VALUES ARE CALCULATED OF COMBINED LOOP AND LEAD-IN INDUCTANCE AND RESISTANCE. ACTUAL MEASURED VALUES SHOULD BE WITHIN +/- 20% OF THESE VALUES.

Q=QUADRAPOLE
* =SEE "DETAIL A"



DETAIL A
(NO SCALE)
INSTALLING DETECTOR LOOP WIRES IN EXISTING CONDUIT

- DRILL OUT PAVEMENT SEALANT AND CLEAN EXISTING CONDUIT.
- REMOVE EXISTING DETECTOR LOOP WIRES TO HANDHOLE OR GULFBOX.
- INSTALL NEW LOOP LEAD-IN WIRES IN EXISTING CONDUIT.
- SPLICE NEW DETECTOR LOOP WIRES TO EXISTING LOOP LEAD-IN CABLE IN HANDHOLE OR GULFBOX.
- FILL HOLE WITH APPROVED SEALER. PREVENT SEALER FROM ENTERING INTO CONDUIT.
- LOCATING UNDERGROUND CABLE WILL BE PAID FOR SEPARATELY.

NOT A PAY ITEM. THE COST OF THIS WORK SHALL BE INCLUDED IN THE PAY ITEM "DETECTOR LOOP REPLACEMENT"

DETECTOR LOOP REPLACEMENT LEGEND

- EX. HANDHOLE
- ⬡ EX. DETECTOR LOOP
- ⬢ EX. TRAFFIC SIGNAL CONTROLLER
- EXISTING CONDUIT
- ▬ PROPOSED DETECTOR LOOP

MODEL: Default
FILE NAME: p:\uldestaw_bentley.com\PIV\DOT\Documents\DOT Office\Dir\dr. B\Project\0876479\CADD\Draws\Electrical\0876479-alec.dwg

USER NAME = Michael.Preston	DESIGNED -	REVISED -
	DRAWN -	REVISED -
PLOT SCALE = 40,0000 * / in.	CHECKED -	REVISED -
PLOT DATE = 8/23/2022	DATE -	REVISED -

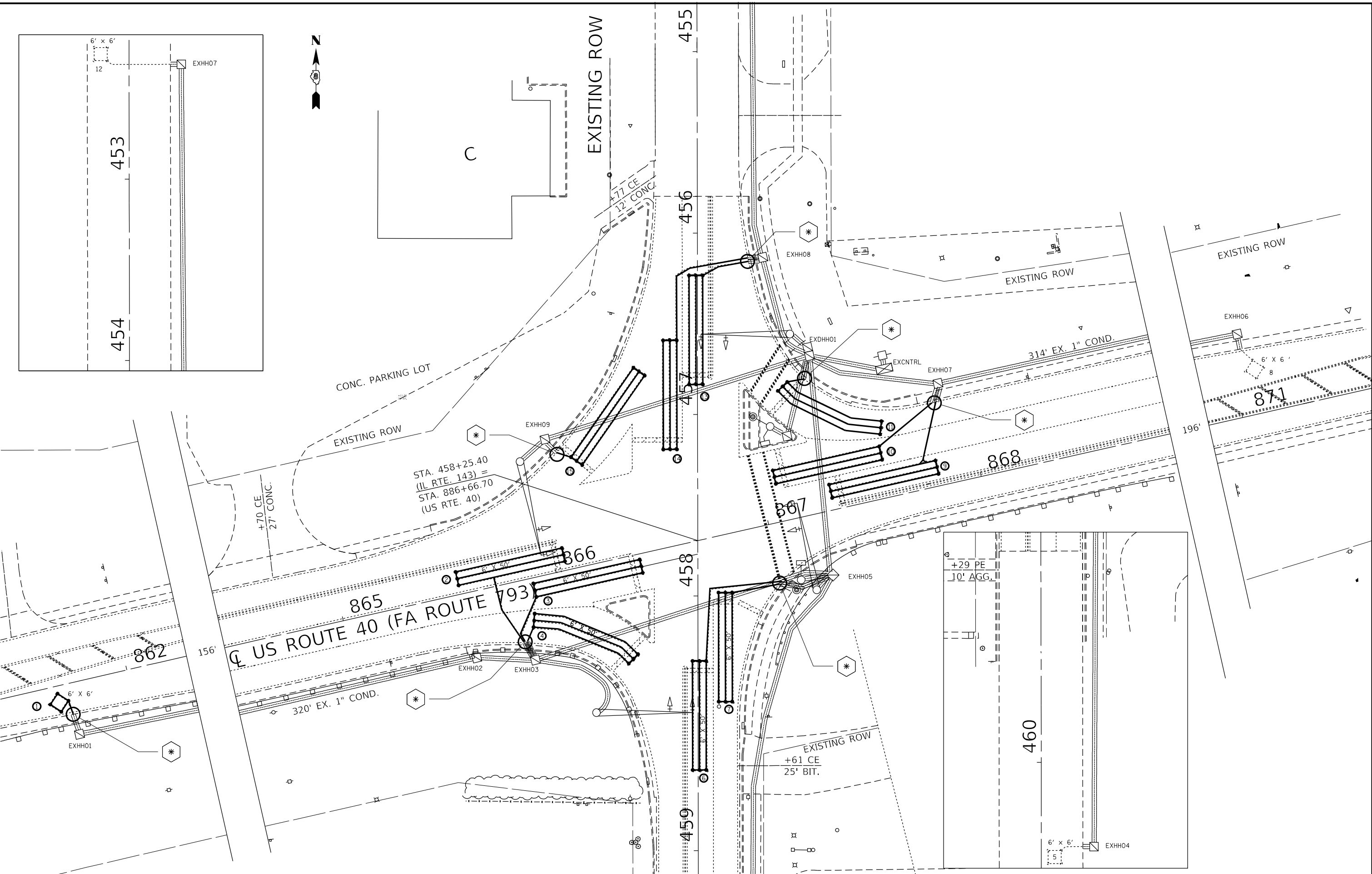
STATE OF ILLINOIS
DEPARTMENT OF TRANSPORTATION

DETECTOR LOOP REPLACEMENT
GENERAL NOTES, SCHEDULE OF QUANTITIES,
DETAIL AND LEGEND

SCALE: SHEET 01 OF 05 SHEETS STA. TO STA.

F.A.P. RTE.	SECTION	COUNTY	TOTAL SHEETS	SHEET NO.
793	(R-1)RS-5	MADISON	44	34
CONTRACT NO. 76M79			ILLINOIS FED. AID PROJECT	

MODEL: Default
 FILE: 344162_20220825.ctb
 PROJECT: I:\Projects\0876479\0876479\0876479.ctb
 USER: Michael.Preston



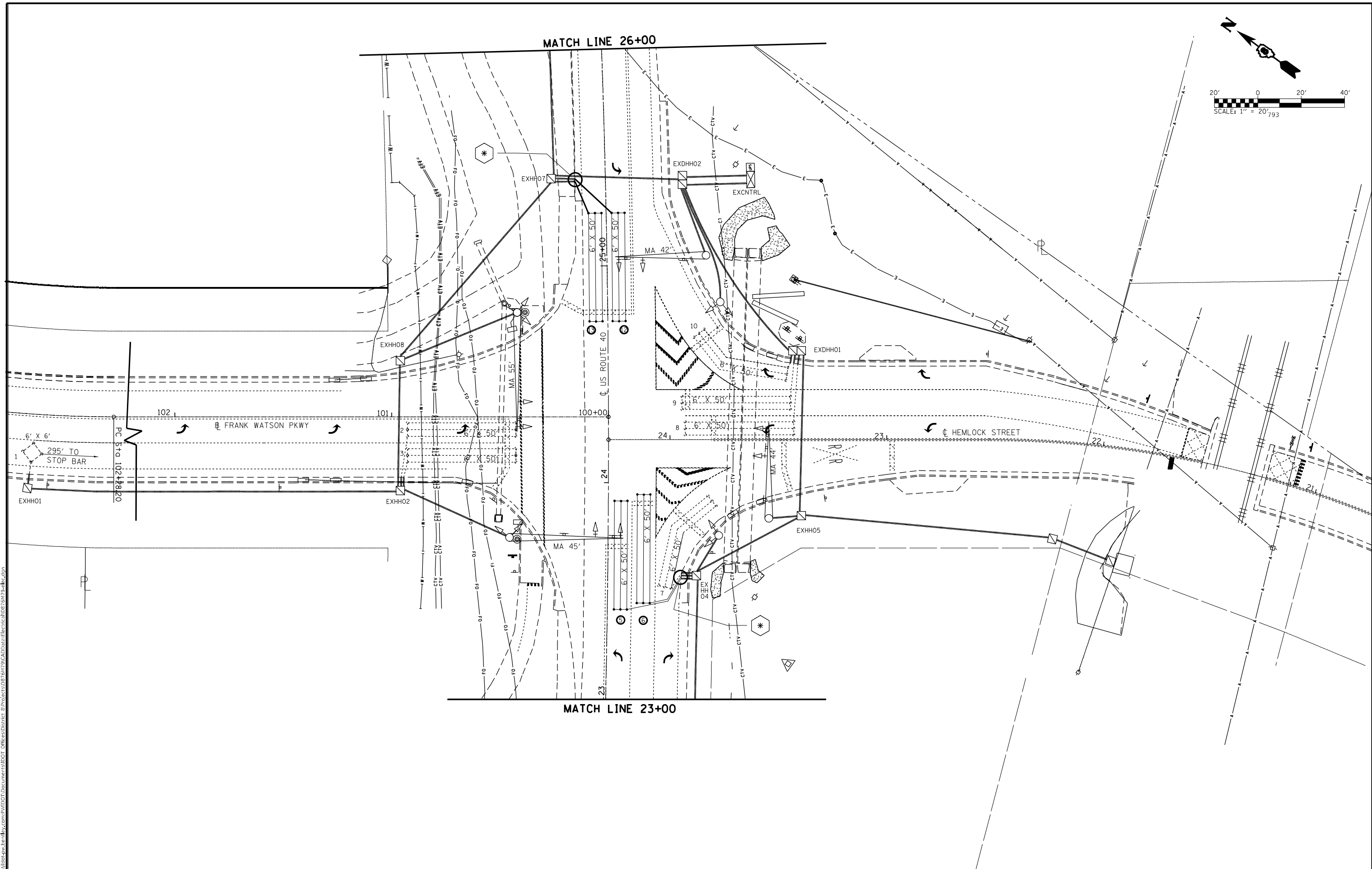
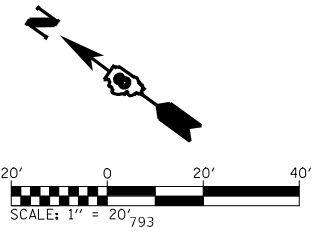
USER NAME = Michael.Preston	DESIGNED -	REVISED -
	DRAWN -	REVISED -
PLOT SCALE = 40,0000 * / in.	CHECKED -	REVISED -
PLOT DATE = 8/25/2022	DATE -	REVISED -

STATE OF ILLINOIS
DEPARTMENT OF TRANSPORTATION

DETECTOR LOOP REPLACEMENT PLAN
US 40 AT IL 143

F.A.P. RTE. 793	SECTION (R-1)RS-5	COUNTY MADISON	TOTAL SHEETS 44	SHEET NO. 35
CONTRACT NO. 76M79				
ILLINOIS FED. AID PROJECT				

SCALE: SHEET 02 OF 05 SHEETS STA. TO STA.



MODEL: Default
 FILE: NAME: \\pilot-cw-beadley.com\FW\DOT\Documents\DOT_Offices\Dir\dir_8\Project\0876479\CADD\Draws\Electrical\0876479-ekc.dwg
 PLOT DATE = 8/23/2022

USER NAME = Michael.Preston	DESIGNED -	REVISED -
	DRAWN -	REVISED -
PLOT SCALE = 40,0000 * / in.	CHECKED -	REVISED -
PLOT DATE = 8/23/2022	DATE -	REVISED -

STATE OF ILLINOIS
DEPARTMENT OF TRANSPORTATION

DETECTOR LOOP REPLACEMENT PLAN
US 40 AT FRANK WATSON PRKWY./HEMLOCK ST.
1 OF 2

SCALE: SHEET 03 OF 05 SHEETS STA. TO STA.

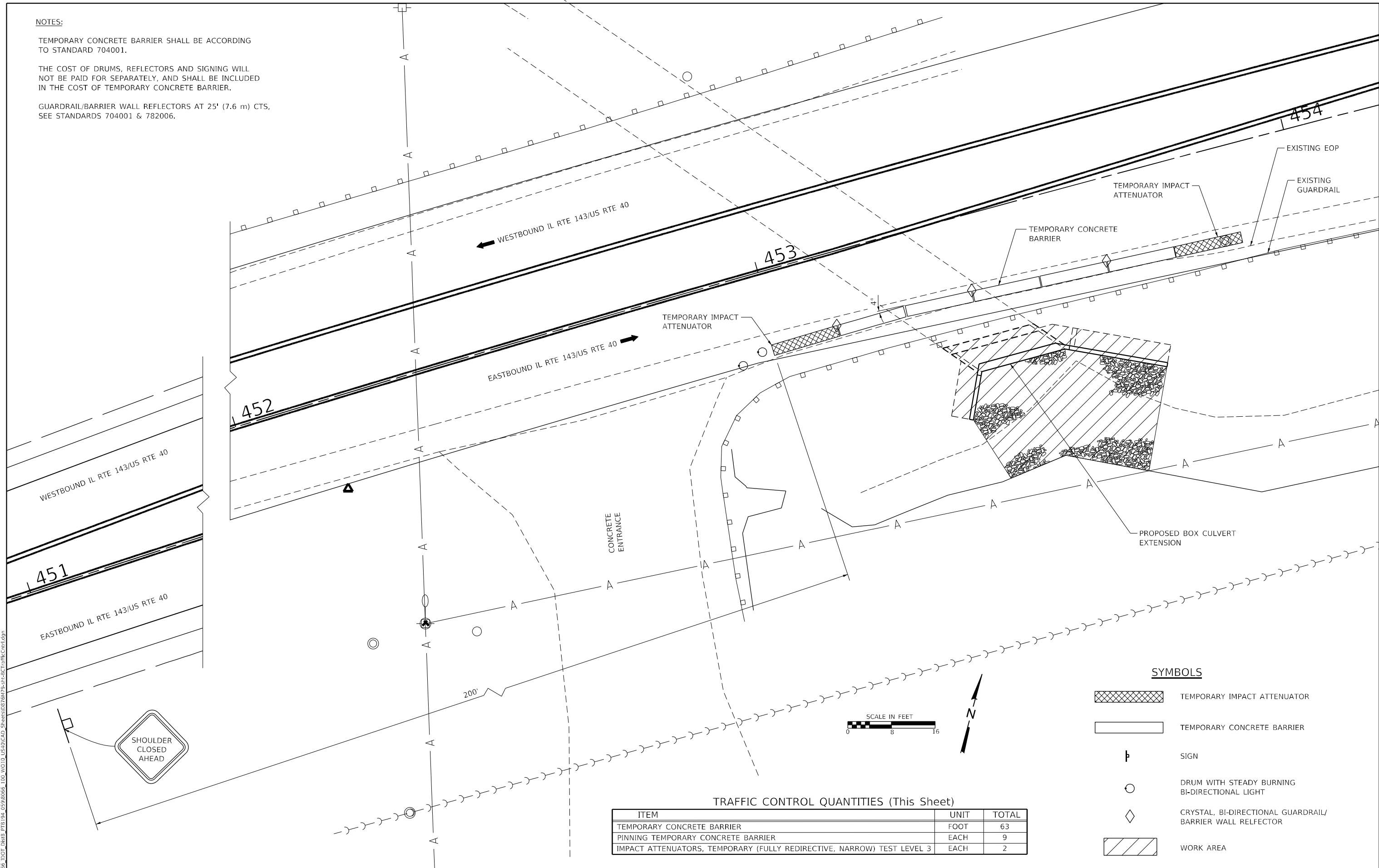
F.A.P. RTE. 793	SECTION (R-1)RS-5	COUNTY MADISON	TOTAL SHEETS 44	SHEET NO. 36
CONTRACT NO. 76M79			ILLINOIS FED. AID PROJECT	

NOTES:

TEMPORARY CONCRETE BARRIER SHALL BE ACCORDING TO STANDARD 704001.

THE COST OF DRUMS, REFLECTORS AND SIGNING WILL NOT BE PAID FOR SEPARATELY, AND SHALL BE INCLUDED IN THE COST OF TEMPORARY CONCRETE BARRIER.

GUARDRAIL/BARRIER WALL REFLECTORS AT 25' (7.6 m) CTS, SEE STANDARDS 704001 & 782006.



TRAFFIC CONTROL QUANTITIES (This Sheet)

ITEM	UNIT	TOTAL
TEMPORARY CONCRETE BARRIER	FOOT	63
PINNING TEMPORARY CONCRETE BARRIER	EACH	9
IMPACT ATTENUATORS, TEMPORARY (FULLY REDIRECTIVE, NARROW) TEST LEVEL 3	EACH	2

SYMBOLS

	TEMPORARY IMPACT ATTENUATOR
	TEMPORARY CONCRETE BARRIER
	SIGN
	DRUM WITH STEADY BURNING BI-DIRECTIONAL LIGHT
	CRYSTAL, BI-DIRECTIONAL GUARDRAIL/BARRIER WALL REFLECTOR
	WORK AREA

MODEL: D:\p1\hmg\100\10010\10010\CAD_Sheets\076M79-51-32\TrafficControl.dgn
 FILE NAME: 1001006.dwg
 PLOT DATE: 8/26/2022
 PLOT SCALE: 2.0000" = 1'



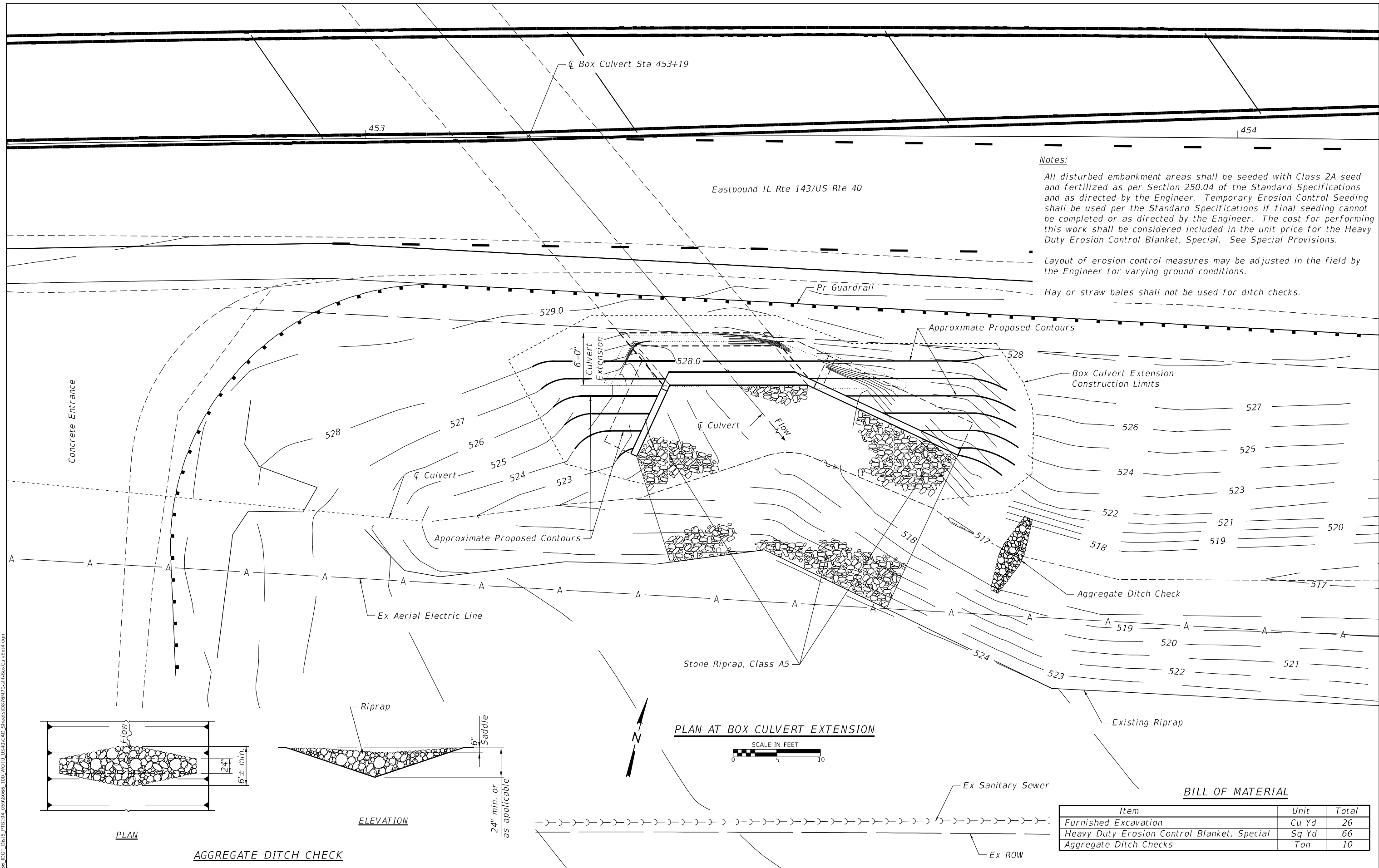
USER NAME = kschwierjohn	DESIGNED -	REVISED -
PLOT SCALE = 2.0000" / 1'	DRAWN -	REVISED -
PLOT DATE = 8/26/2022	CHECKED -	REVISED -
	DATE -	REVISED -

**STATE OF ILLINOIS
DEPARTMENT OF TRANSPORTATION**

**TRAFFIC CONTROL PLAN
STRUCTURE NO. 060-2514**

SCALE: SHEET 1 OF 1 SHEETS STA. TO STA.

F.A.P. RTE. 793	SECTION (R-1)RS-5	COUNTY MADISON	TOTAL SHEETS 44	SHEET NO. 39
			CONTRACT NO. 76M79	
ILLINOIS FED. AID PROJECT				

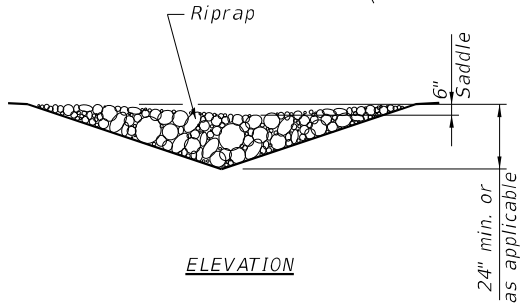
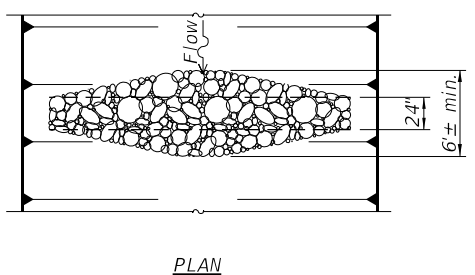


Notes:

All disturbed embankment areas shall be seeded with Class 2A seed and fertilized as per Section 250.04 of the Standard Specifications and as directed by the Engineer. Temporary Erosion Control Seeding shall be used per the Standard Specifications if final seeding cannot be completed or as directed by the Engineer. The cost for performing this work shall be considered included in the unit price for the Heavy Duty Erosion Control Blanket, Special. See Special Provisions.

Layout of erosion control measures may be adjusted in the field by the Engineer for varying ground conditions.

Hay or straw bales shall not be used for ditch checks.



AGGREGATE DITCH CHECK

PLAN AT BOX CULVERT EXTENSION
SCALE IN FEET

BILL OF MATERIAL

Item	Unit	Total
Furnished Excavation	Cu Yd	26
Heavy Duty Erosion Control Blanket, Special	Sq Yd	66
Aggregate Ditch Checks	Ton	10

MODEL: D:\hmg\... FILE NAME: ...

HMG
ENGINEERS
IL PROF DESIGN FIRM 184,000899

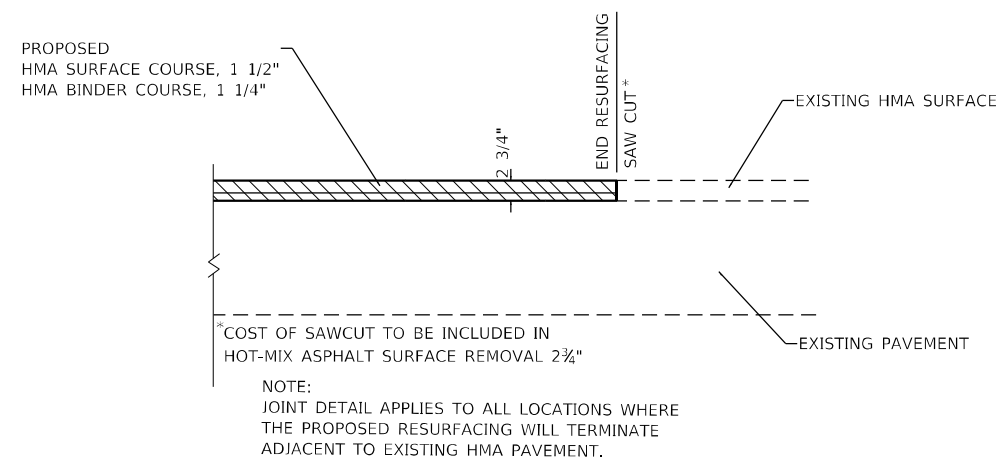
USER NAME = kschwierjohn	DESIGNED -	REVISED -
PLOT SCALE = 0.1667' / in.	DRAWN -	REVISED -
PLOT DATE = 8/26/2022	CHECKED -	REVISED -
	DATE -	REVISED -

STATE OF ILLINOIS
DEPARTMENT OF TRANSPORTATION

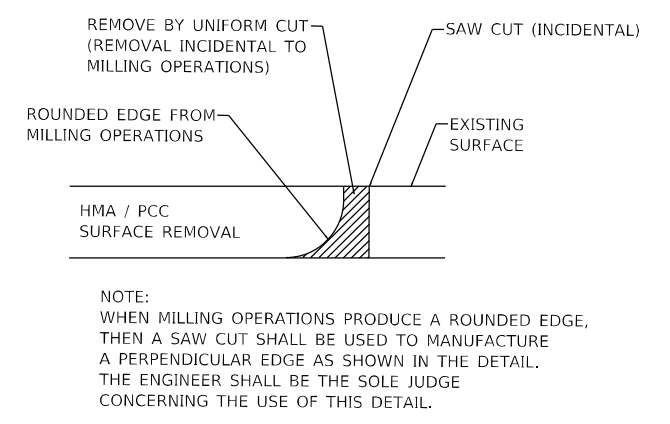
GRADING AND EROSION CONTROL PLAN
STRUCTURE NO. 060-2514
SCALE: SHEET 1 OF 1 SHEETS STA. TO STA.

F.A.P. RTE. 793	SECTION (R-1)RS-5	COUNTY MADISON	TOTAL SHEETS 44	SHEET NO. 43
CONTRACT NO. 76M79				
ILLINOIS FED. AID PROJECT				

MODEL Path: \\hmg\hmg\100\100\CAD_Sheets\076M79-11-Details.dgn
 FILE NAME: 100\006\DOT_Details_PTB\04_05\0806_100\100\CAD_Sheets\076M79-11-Details.dgn



BUTT JOINT DETAIL
ELEVATION VIEW



BUTT JOINT DETAIL



USER NAME = kschwierjohn	DESIGNED -	REVISED -
	DRAWN -	REVISED -
PLOT SCALE = 100,0000' / in.	CHECKED -	REVISED -
PLOT DATE = 8/26/2022	DATE -	REVISED -

**STATE OF ILLINOIS
DEPARTMENT OF TRANSPORTATION**

MISCELLANEOUS CONSTRUCTION DETAILS

SCALE: SHEET 1 OF 1 SHEETS STA. TO STA.

F.A.P. RTE.	SECTION	COUNTY	TOTAL SHEETS	SHEET NO.
793	(R-1)RS-5	MADISON	44	44
CONTRACT NO. 76M79			ILLINOIS FED. AID PROJECT	