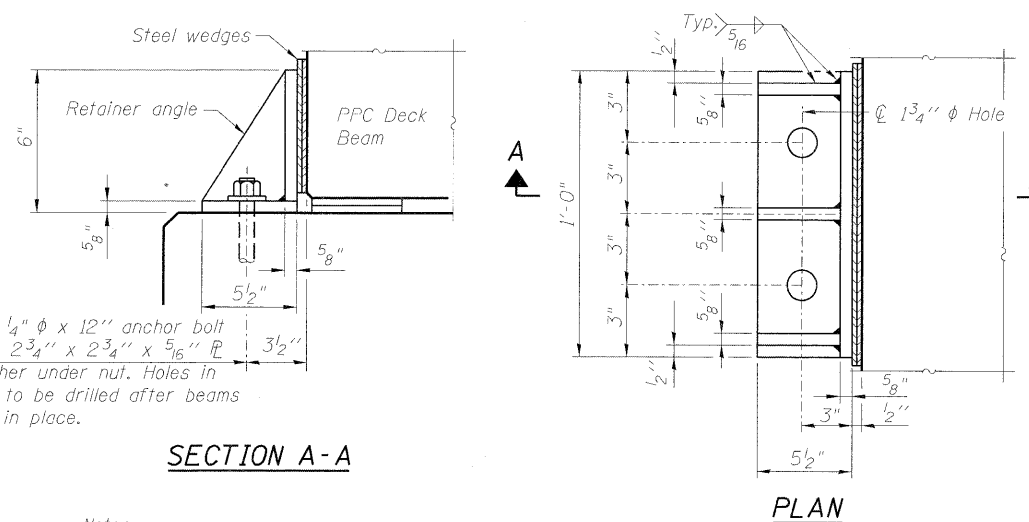
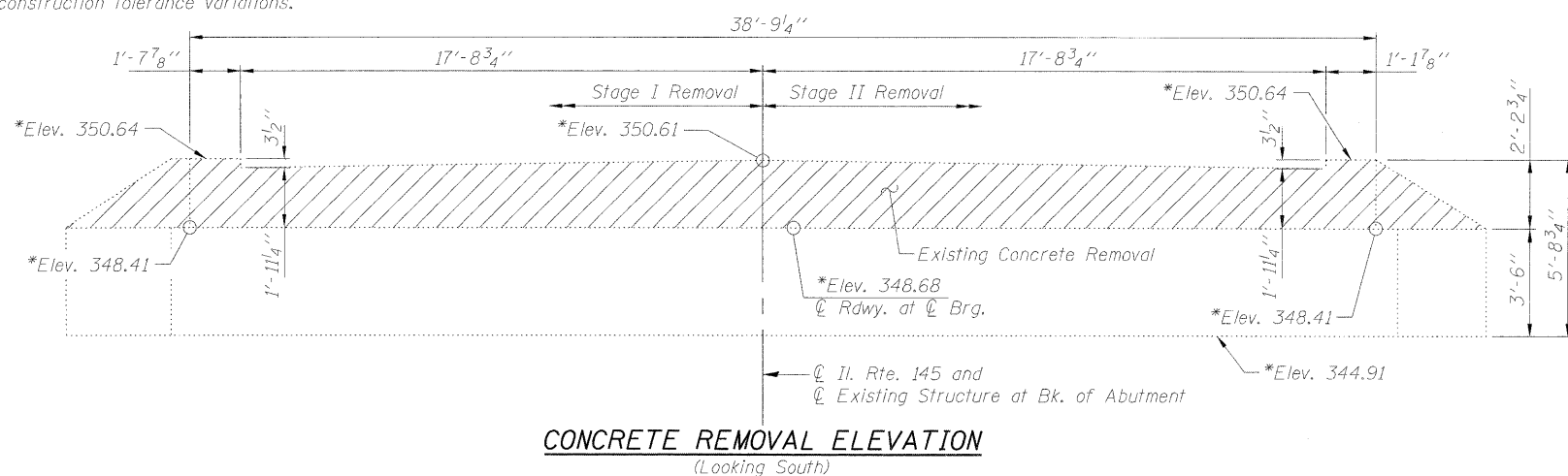


* Elevations given are from existing plans and have been adjusted by deducting 0.41 ft. The comparison data is based on a survey of the existing bearing seats, and is subject to normal construction tolerance variations.



@ 1 1/4" ϕ x 12" anchor bolt with 2 3/4" x 2 3/4" x 5/16" PL washer under nut. Holes in cap to be drilled after beams are in place.

SECTION A-A

PLAN

Notes:

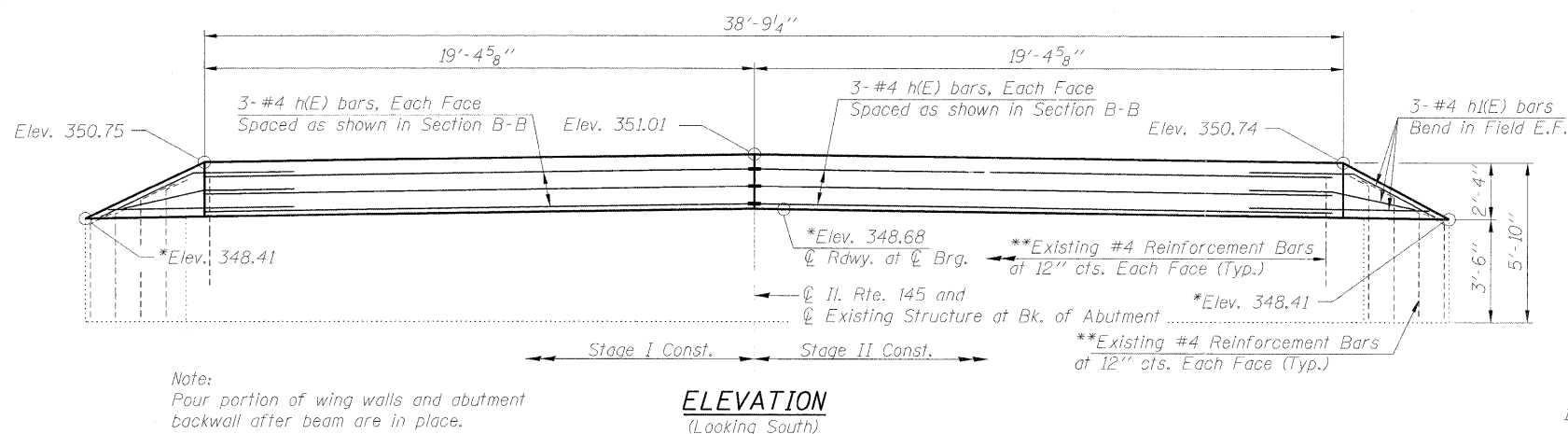
Cost of retainer and accessories are included with Precast Prestressed Concrete Deck Beams. Equivalent rolled angle with stiffeners will be allowed in lieu of welded plates. The side retainers shall be galvanized after shop fabrication according to AASHTO M 111 and ASTM 385. Anchor bolts and plate washers shall be galvanized according to AASHTO M 232. After the notch or concrete overlay are poured and cured, the steel wedges shall be removed.

Notes:

** Existing reinforcement shall be cleaned and incorporated into the new construction. Cost included with Concrete Removal. Bars damaged or not salvaged shall be replaced with either drilled and epoxy grouted bars or IDOT approved mechanical bar splicer as directed by the Engineer. No additional compensation will be allowed for either method.

*** Bars epoxy grouted shall have an embedment sufficient to obtain 1.25 x yield strength of the reinforcing bar.

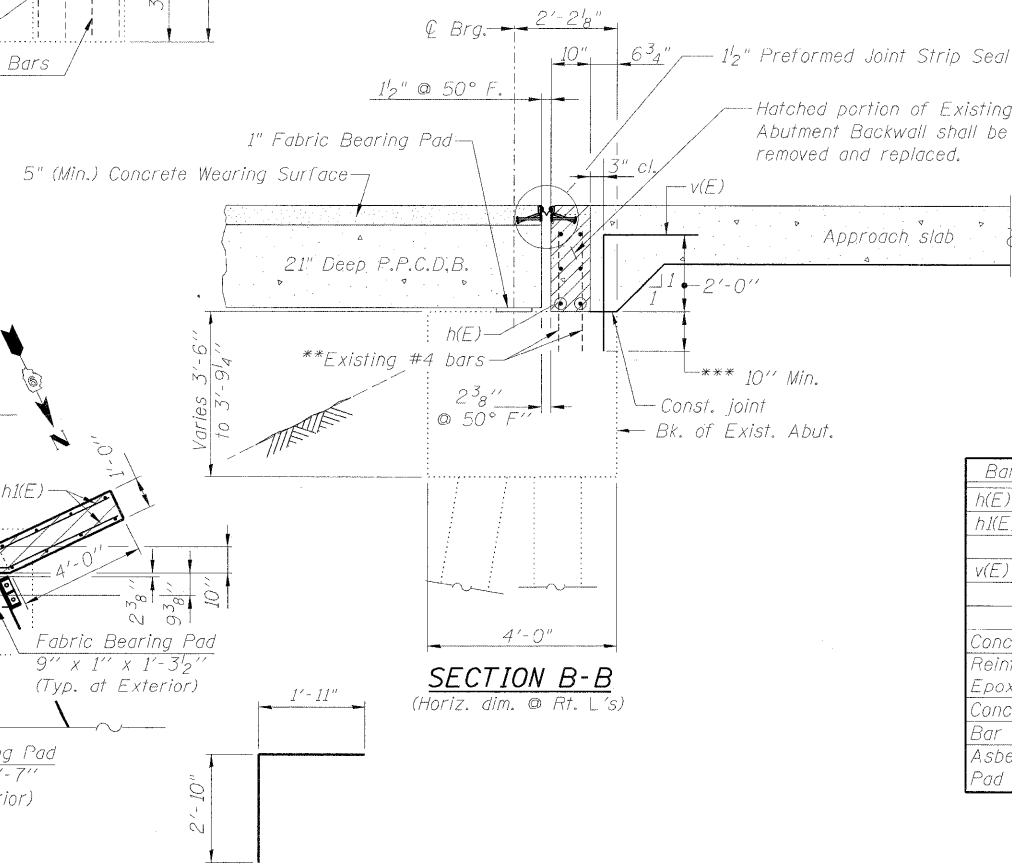
Drill holes for epoxy grouted bars to miss existing reinforcement.



Note:

Pour portion of wing walls and abutment backwall after beam are in place.

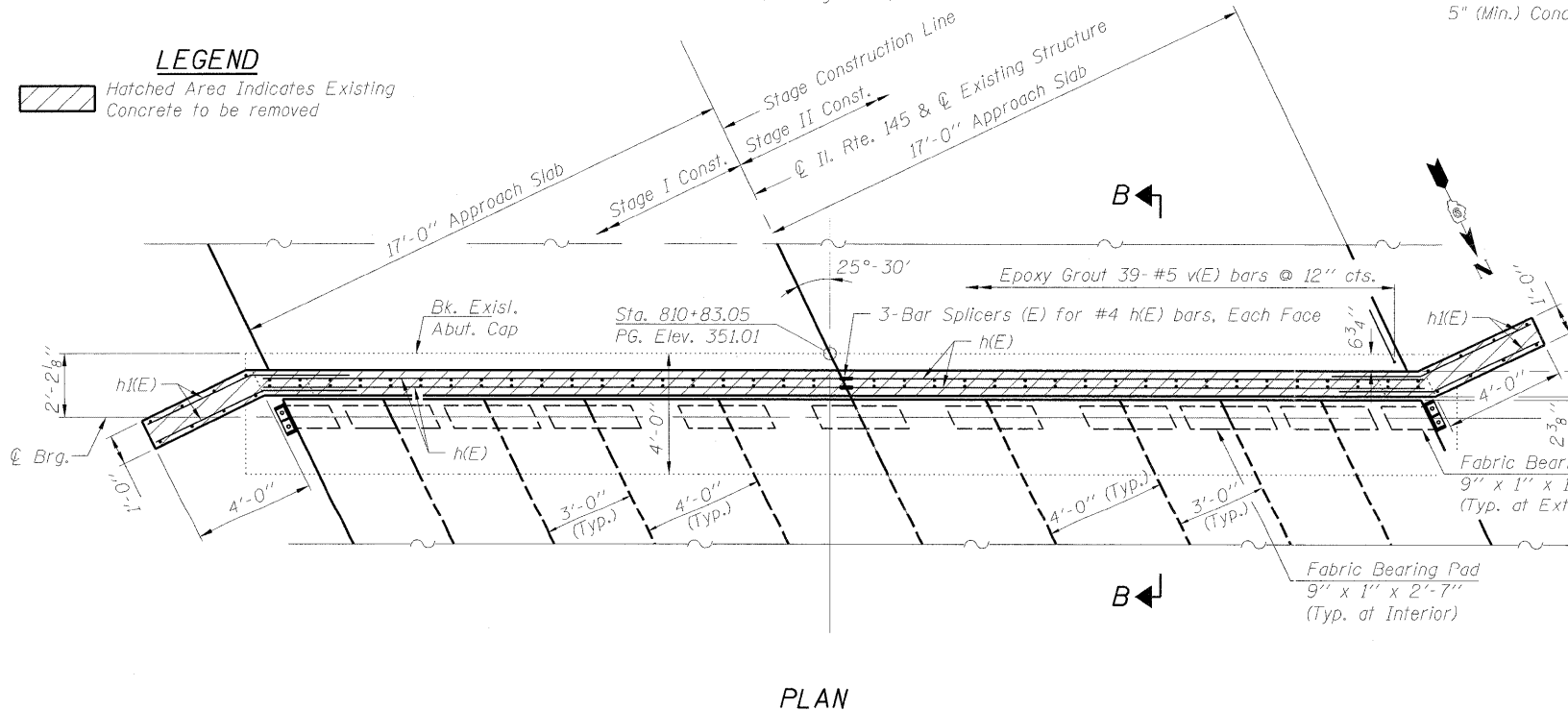
ELEVATION (Looking South)



SECTION B-B (Horiz. dim. @ Rt. L's)

BAR v(E)

LEGEND
 Hatched Area Indicates Existing Concrete to be removed



PLAN

SOUTH ABUTMENT BILL OF MATERIAL

Bar No.	Size	Length	Shape
h(E) 12	#4	19'-2"	—
h(E) 12	#4	7'-0"	—
v(E) 39	#5	4'-9"	└
Concrete Structures	Cu. Yd.	3.1	
Reinforcement Bars, Epoxy Coated	Pound	400	
Concrete Removal	Cu. Yd.	2.6	
Bar Splicers	Each	6	
Asbestos Bearing Pad Removal	Each	22	

HANSON
 PROFESSIONAL DESIGN FIRM LICENSE #184-001084
 © Copyright Hanson Professional Services Inc. 2011

FILE NAME = 0760025_78164-018-SouthAbut.dgn

USER NAME = cdx01283

PLOT SCALE =

PLOT DATE = 07/01/2011

DESIGNED - BWC

CHECKED -

DRAWN - BWC

CHECKED - MNM

REVISED -

REVISED -

REVISED -

REVISED -

STATE OF ILLINOIS
 DEPARTMENT OF TRANSPORTATION

SOUTH ABUTMENT
 STRUCTURE NO. 076-0025

SHEET NO. 18 OF 22 SHEETS

F.A.P. RTE. 132 SECTION 103BR-1 COUNTY POPE TOTAL SHEETS 38 SHEET NO. 34

CONTRACT NO. 78164

ILLINOIS FED. AID PROJECT