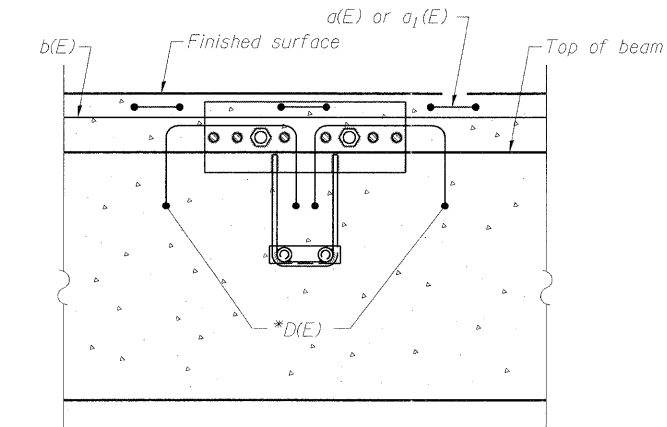


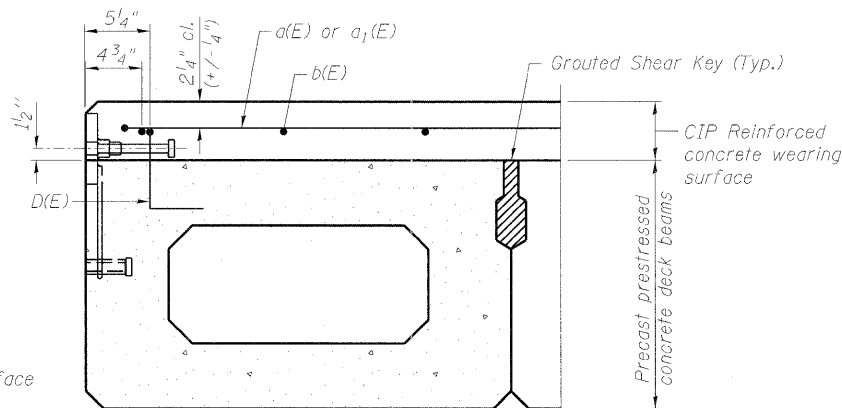
PLAN

Notes:
 The rail anchorage shall be cast with the beam and the wearing surface shall be cast in the field.
 Formwork necessary for the wearing surface may be secured utilizing the bottom rail anchorage inserts and/or additional inserts cast into the beam. Drilling into the beam will not be permitted.
 See Sheet 2 of 22 for location of rail anchors.

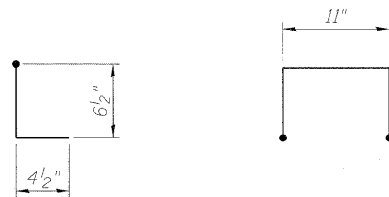
CONCRETE OVERLAY MODIFICATIONS FOR RAIL ANCHORAGE



SECTION A-A

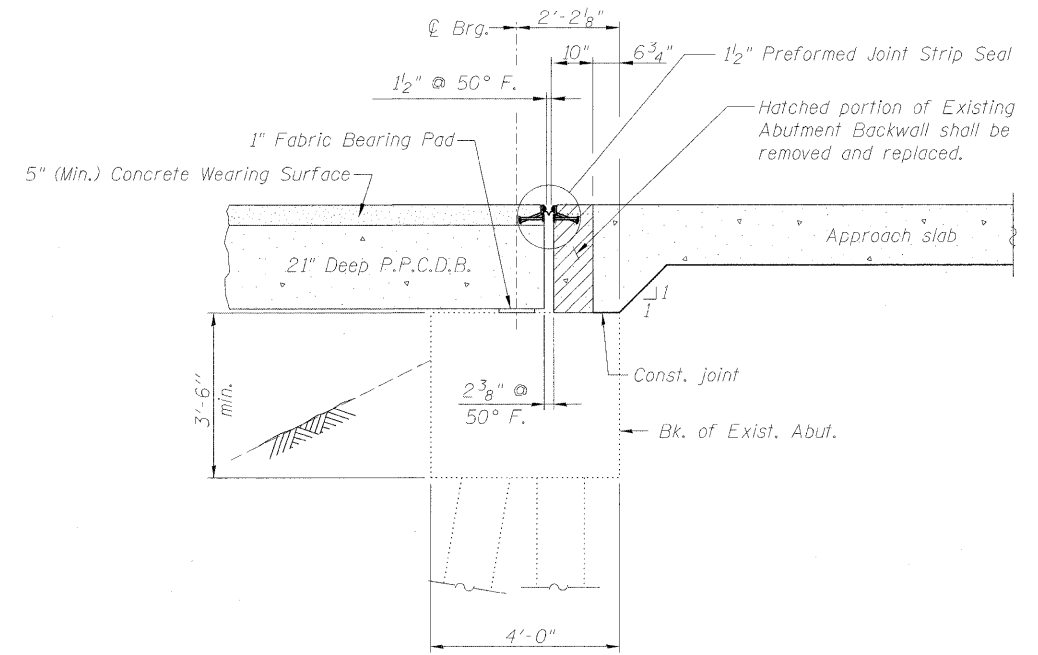


SECTION THRU FASCIA BEAM



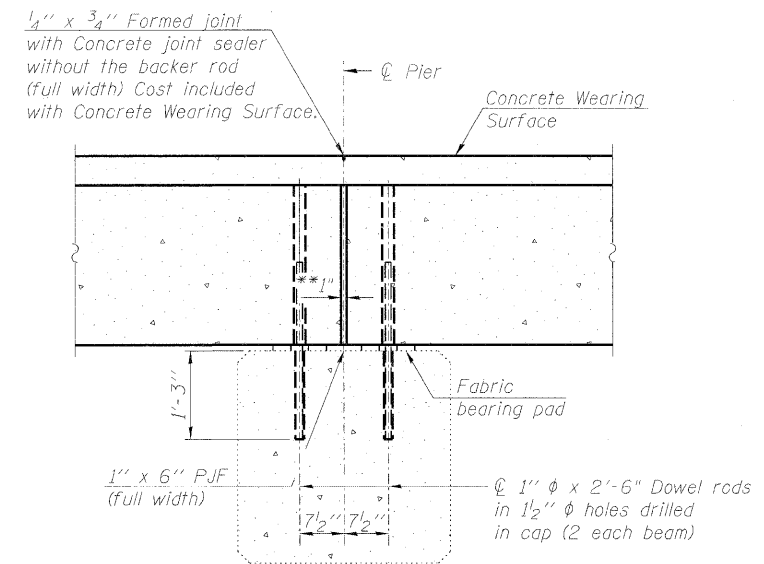
BAR D(E)

* Place 2-#4 D(E) bars in beam at each post location shown. D(E) bars included in cost of beam.



SECTION THRU EXISTING PILE SUPPORTED STUB ABUTMENT

(Horiz. dim. @ Rt. L's)
 Notes:
 All concrete wearing surfaces shall be placed prior to casting a backwall and/or approach slab.
 See Sheets 11 & 13 of 22 for fabric bearing pad details.



SECTION THRU EXISTING FIXED PIER

(Horiz. dim. @ Rt. L's)
 ** 1" Jt. shall be filled with non-shrink grout.
 1" dimension may vary to accommodate tolerance in beam lengths.
 See Sheet 11 & 13 of 22 for fabric bearing pad details.

FILE NAME = 0760025_78164-015-SuperDet.dgn	USER NAME = cax01283	DESIGNED - BWC	REVISED -	STATE OF ILLINOIS DEPARTMENT OF TRANSPORTATION	SUPERSTRUCTURE DETAILS (SHEET 2 OF 2) STRUCTURE NO. 076-0025	F.A.P. RTE. 132	SECTION 103BR-1	COUNTY POPE	TOTAL SHEETS 38	SHEET NO. 31
PLOT SCALE =	DRAWN - BWC	REVISED -	CONTRACT NO. 78164							
PLOT DATE = 07/01/2011	CHECKED - MNM	REVISED -	ILLINOIS FED. AID PROJECT							
SHEET NO. 15 OF 22 SHEETS										