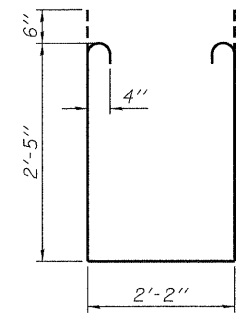
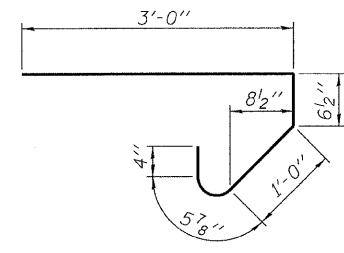


BAR v(E)



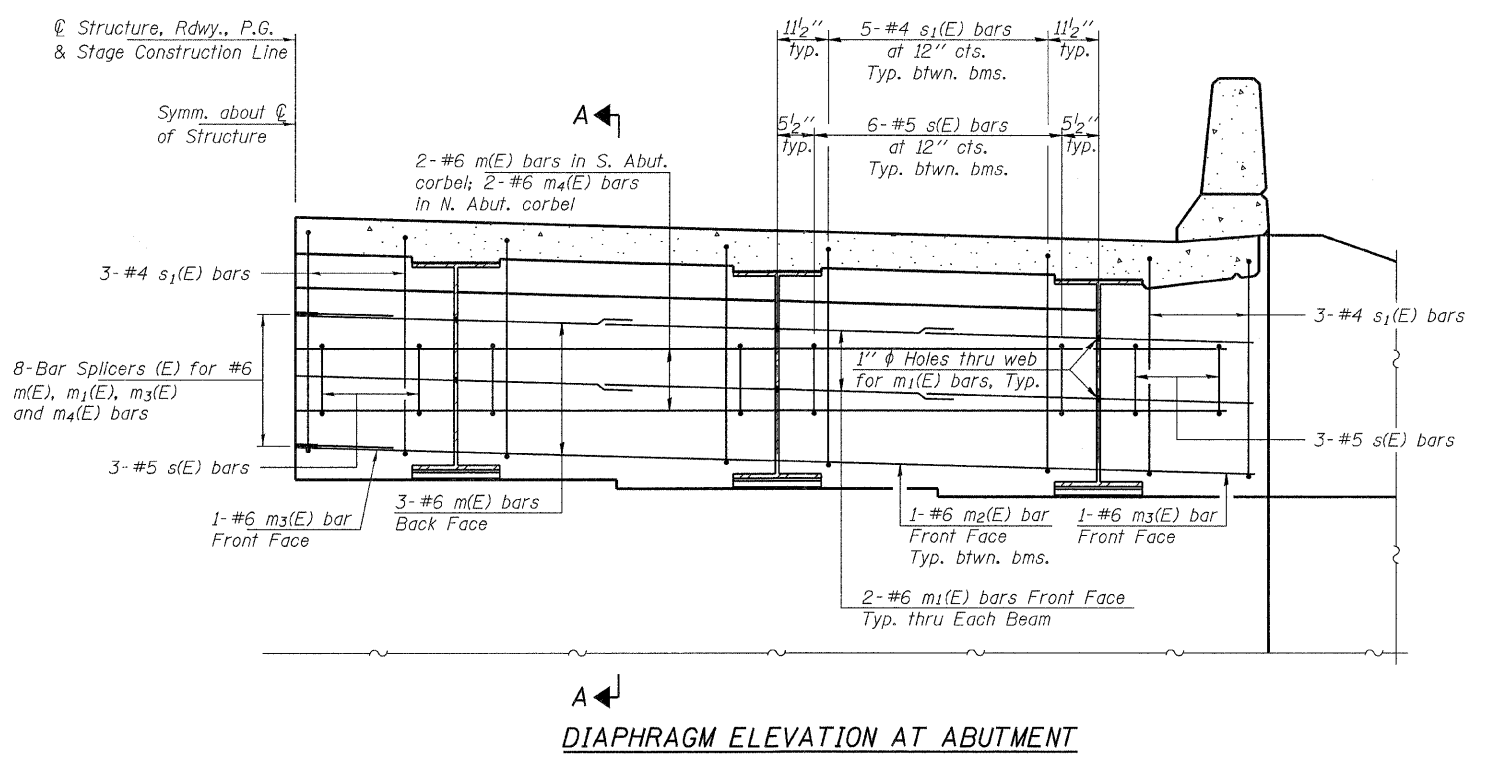
BAR s1(E)



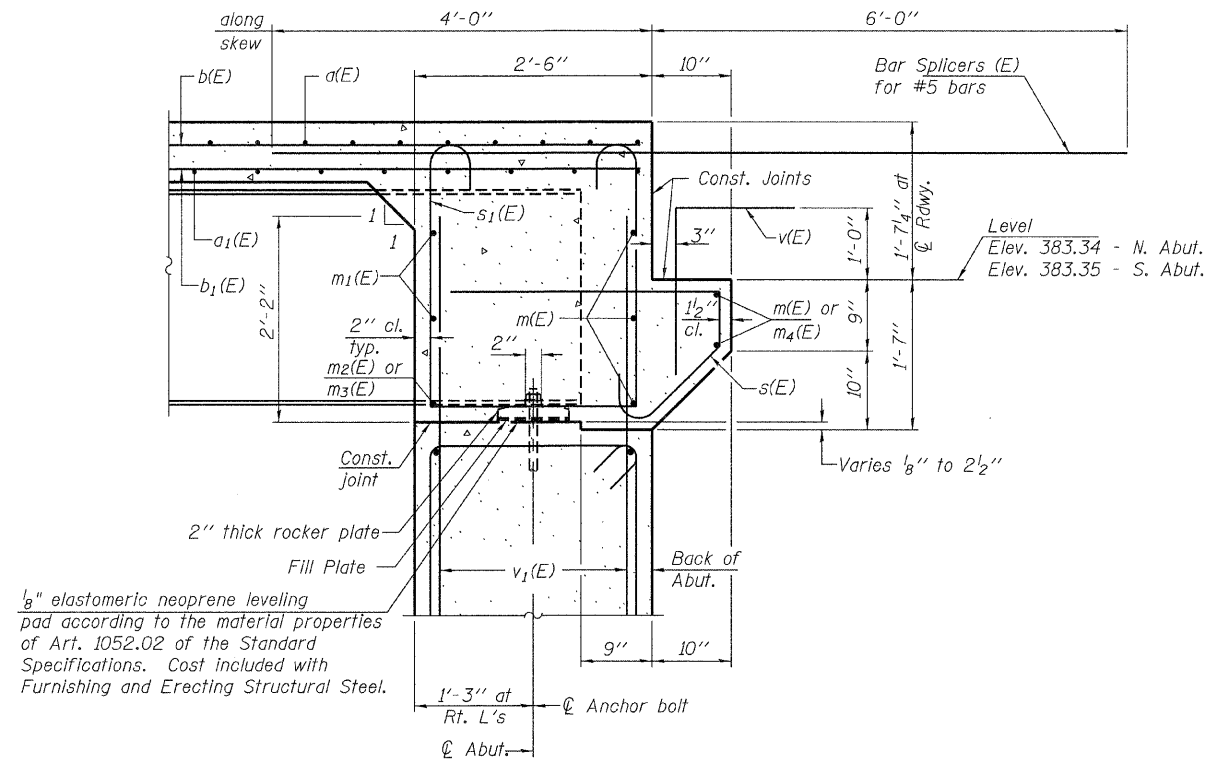
BAR s(E)

Notes:
 Reinforcement bars in diaphragm are billed with superstructure on sheet 11 of 26.
 Concrete in diaphragm is included with Concrete Superstructure on sheet 11 of 26.
 The s(E) and s1(E) bars shall be placed parallel to the beams. Spacing for these bars shall be at right angles to the beams.
 For Bar Splicer details see sheet 22 of 26.

MIN. BAR LAP
 #6 bar = 3'-4"



DIAPHRAGM ELEVATION AT ABUTMENT



SECTION A-A
 Dimensions at right angles to abutment, except as shown.

FILE NAME = 890148-shr-bridge.dgn	USER NAME =	DESIGNED - A.S.L.	REVISD -	STATE OF ILLINOIS DEPARTMENT OF TRANSPORTATION	SUPERSTRUCTURE DETAILS STRUCTURE NO. 097-0076	F.A.P.	SECTION	COUNTY	TOTAL SHEETS	SHEET NO.	
HAMPTON, LENZINI AND RENWICK, INC. 3085 STEVENSON DRIVE, SUITE 201 SPRINGFIELD, ILLINOIS 62708	PLOT SCALE =	CHECKED - C.C.S.	REVISD -			328	105B-1	WHITE	54	33	
ILLINOIS PROFESSIONAL DESIGN FIRM L.S./P.E./S.E. CORP. 184.700569	PLOT DATE = 7/13/2011	DRAWN - D.A.B.	REVISD -			CONTRACT NO. 78161					
		CHECKED - M.D.C.	REVISD -			ILLINOIS FED. AID PROJECT					
						SHEET NO. 12 OF 26 SHEETS					