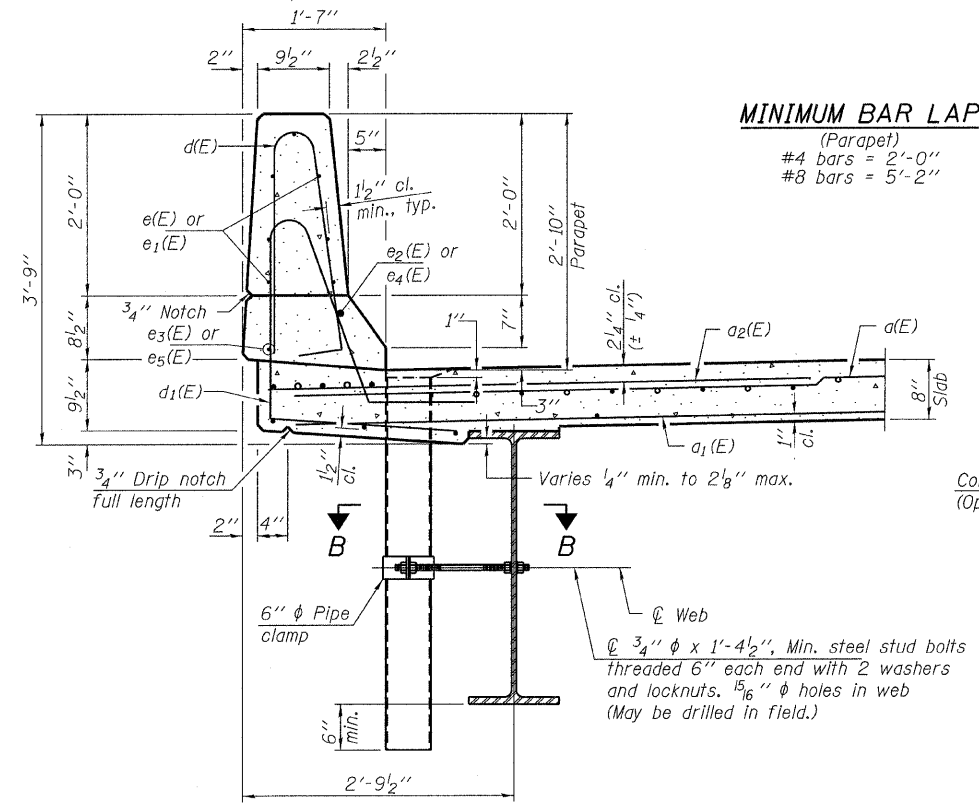
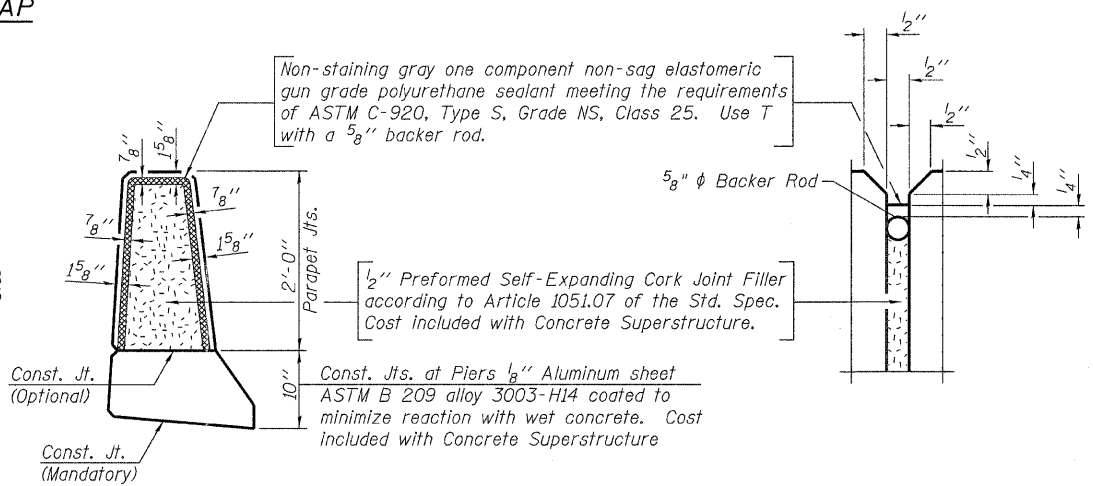


**INSIDE ELEVATION OF PARAPET**



**SECTION THRU PARAPET**



**PARAPET JOINT DETAILS**

Notes:  
The exterior surfaces of the floor drains shall be painted with the finish coat as specified in the special provisions for Cleaning and Painting New Metal Structures. The exterior surfaces of the drains shall be cleaned according to Society of Protective Coatings Spec. SSPC-SP1 prior to painting.  
Fiberglass pipe shall conform to ASTM D 2996, with short-time rupture strength hoop tensile stress of 30,000 p.s.i. minimum.  
Galvanize clamping device according to AASHTO M232. Cost of clamping device and inserts is included with Floor Drains.

**SUPERSTRUCTURE BILL OF MATERIAL**

BAR	NO.	SIZE	LENGTH	SHAPE
a(E)	438	#5	17'-2"	—
a <sub>1</sub> (E)	306	#5	16'-9"	—
a <sub>2</sub> (E)	436	#6	6'-6"	—
b(E)	152	#5	33'-8"	—
b <sub>1</sub> (E)	160	#5	27'-5"	—
b <sub>2</sub> (E)	68	#6	25'-4"	—
d(E)	278	#5	5'-7"	┌
d <sub>1</sub> (E)	278	#5	7'-7"	└
e(E)	56	#4	19'-4"	—
e <sub>1</sub> (E)	42	#4	15'-7"	—
e <sub>2</sub> (E)	4	#8	39'-1"	—
e <sub>3</sub> (E)	4	#4	39'-1"	—
e <sub>4</sub> (E)	4	#8	26'-5"	—
e <sub>5</sub> (E)	4	#4	24'-10"	—
m(E)	16	#6	17'-3"	—
m <sub>1</sub> (E)	24	#6	8'-0"	—
m <sub>2</sub> (E)	8	#6	5'-6"	—
m <sub>3</sub> (E)	8	#6	2'-6"	—
m <sub>4</sub> (E)	4	#6	16'-4"	—
s(E)	72	#5	5'-5"	└
s <sub>1</sub> (E)	64	#4	8'-0"	└
v(E)	64	#5	3'-9"	└
Concrete Superstructures			Cu. Yd.	160.5
Reinforcement Bars, Epoxy Coated			Pound	37,690

Bars indicated thus 1x2-#8 etc. indicates 1 line of bars with 2 lengths per line.

