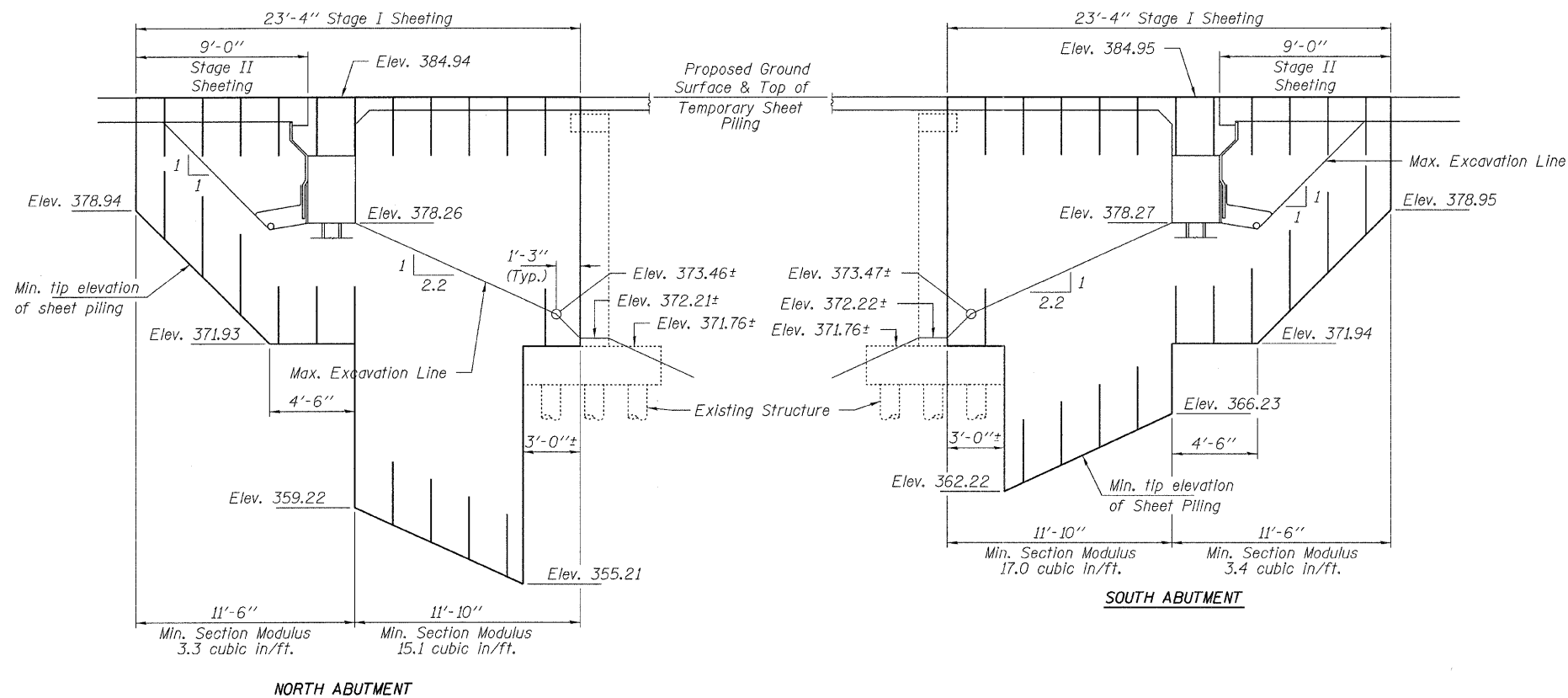


**SECTION THRU INTEGRAL ABUTMENT**  
(Horiz. dim @ Rt. L's)

\*Included in the cost of Pipe Underdrains for Structures.

All drainage system components shall extend to 2'-0" from the end of each wingwall except an outlet pipe shall extend until intersecting with the side slopes. The pipes shall drain into concrete headwalls. (See Article 601.05 of the Standard Specifications and Highway Standard 601101)



**NORTH ABUTMENT**

**SOUTH ABUTMENT**

Note:  
The Contractor shall connect the first sheet to the existing abutment wall to ensure stability of sheets driven to the top of the existing footing. This connection shall be reviewed and accepted by the Engineer and included in the cost for Temporary Sheet Piling.

If the Contractor chooses to alter the temporary cantilevered sheet piling design requirements shown on the plans, a design submittal including plan details and calculations will be required for review and acceptance by the Engineer.

**TEMPORARY SHEET PILING AT ABUTMENTS**

**GENERAL NOTES**

Fasteners shall be AASHTO M164 Type 1, mechanically galvanized bolts.  
Bolts 5/8" φ, holes 15/16" φ, unless otherwise noted.  
Calculated weight of Structural Steel = 62,260 lbs. (Grade 50) and 4,750 lbs. (Grade 36).  
No field welding is permitted except as specified in the contract documents.  
Reinforcement bars shall conform to the requirements of ASTM A 706 Gr 60. See Special Provisions.  
Reinforcement bars designated (E) shall be epoxy coated.  
Bearing seat surfaces shall be constructed or adjusted to the designated elevations within a tolerance of 1/8 inch (0.01 ft.). Adjustment shall be made either by grinding the surface or by shimming the bearings.  
The Inorganic Zinc Rich Primer / Acrylic / Acrylic Paint System shall be used for shop and field painting of new structural steel except where otherwise noted. The color of the final finish coat for all interior steel surfaces shall be gray, Munsell No. 5B 7/1. The color of the final finish coat for the exterior and bottom flange of the fascia beams shall be Interstate green, Munsell No. 7.5G 4/8. See Special Provision for "Cleaning and Painting New Metal Structures".  
Layout of slope protection system may be varied to suit ground conditions in the field as directed by the Engineer.  
Slip-Forming of the parapets is not allowed.

STATION 654+78.00  
BUILT 2011 BY  
STATE OF ILLINOIS  
F.A.P. RTE. 328 SEC. 105B-1  
LOADING HL-93  
STR. NO. 097-0076

**NAME PLATE**  
See Std. 515001

**TOTAL BILL OF MATERIAL**

ITEM	UNIT	SUPER	SUB	TOTAL
Stone Riprap, Class A4	Sq. Yd.			1,040
Filter Fabric	Sq. Yd.			1,040
Removal of Existing Structures	Each			1
Structure Excavation	Cu. Yd.			330
Floor Drains	Each	8		8
Concrete Structures	Cu. Yd.		215.7	215.7
Concrete Superstructure	Cu. Yd.	261.2		261.2
Bridge Deck Grooving	Sq. Yd.	623		623
Concrete Encasement	Cu. Yd.		17.6	17.6
Protective Coat	Sq. Yd.	795	19	814
Furnishing and Erecting Structural Steel	L. Sum	1		1
Stud Shear Connectors	Each	3,024		3,024
Reinforcement Bars, Epoxy Coated	Pound	60,040	22,470	82,510
Bar Splicers	Each	674	144	818
Furnishing Steel Piles HP14x73	Foot		704	704
Furnishing Steel Piles HP14x89	Foot		595	595
Driving Piles	Foot		1,299	1,299
Test Pile Steel HP14x89	Each		2	2
Pile Shoes	Each		32	32
Name Plates	Each	1		1
Anchor Bolts, 5/8"	Each		24	24
Anchor Bolts, 1"	Each		24	24
Geocomposite Wall Drain	Sq. Yd.		54	54
Porous Granular Embankment, Special	Cu. Yd.		84.7	84.7
Underwater Structure Excavation Protection - Loc. 1	Each		1	1
Underwater Structure Excavation Protection - Loc. 2	Each		1	1
Mechanical Splicers	Each		108	108
Asbestos Bearing Pad Removal	Each		66	66
Temporary Sheet Piling	Sq. Ft.		758	758
Pipe Underdrains for Structures 4"	Foot		130	130

FILE NAME = 292148-shr-bridge.dgn  
USER NAME =  
DESIGNED - A.S.L.  
CHECKED - C.C.S.  
DRAWN - D.A.B.  
CHECKED - M.D.C.  
HAMPSON, LENZINI AND RENWICK, INC.  
208 STEVENSON DRIVE, SUITE 201  
SPRINGFIELD, ILLINOIS 62708  
ILLINOIS PROFESSIONAL DESIGN FIRM  
LS / PE / SE CORP. 164-00889

DESIGNED - A.S.L.  
CHECKED - C.C.S.  
DRAWN - D.A.B.  
CHECKED - M.D.C.  
REVISOR -  
REVISION -  
REVISION -  
REVISION -

STATE OF ILLINOIS  
DEPARTMENT OF TRANSPORTATION

GENERAL DETAILS  
STRUCTURE NO. 097-0076  
SHEET NO. 2 OF 26 SHEETS

F.A.P. SECTION COUNTY TOTAL SHEETS SHEET NO.  
328 105B-1 WHITE 54 23  
CONTRACT NO. 78161  
ILLINOIS FED. AID PROJECT