

TEMPORARY CONCRETE BARRIER

| | |
|------------------|-----------|
| 216+17 TO 217+54 | 87.5 FOOT |
| TOTAL = | 87.5 FOOT |

PRECAST CONCRETE BOX CULVERT
10' X 2' (M273)

| | |
|---------|-----------|
| 217+29 | 28.0 FOOT |
| TOTAL = | 28.0 FOOT |

RELOCATE TEMPORARY CONCRETE BARRIER

| | |
|------------------|------------|
| 216+17 TO 218+41 | 137.5 FOOT |
| TOTAL = | 137.5 FOOT |

BOX CULVERT END SECTIONS, CULVERT NO. 1

| | |
|---------|----------|
| 217+29 | 1.0 EACH |
| TOTAL = | 1.0 EACH |

PIPE CULVERTS, CLASS A, TYPE 1 21"

| | |
|-------------|-----------|
| 70th STREET | 56.0 FOOT |
| TOTAL = | 56.0 FOOT |

CLASS D PATCHES, TYPE IV, 25 INCH

| | |
|-------------|------------|
| 217+29 | 31.7 SQ YD |
| 70th STREET | 39.1 SQ YD |
| TOTAL = | 70.8 SQ YD |

IMPACT ATTENUATORS, RELOCATE
(NON-REDIRECTIVE), TEST LEVEL 3

| | |
|---------|----------|
| 216+17 | 1.0 EACH |
| 218+41 | 1.0 EACH |
| TOTAL = | 2.0 EACH |

PIPE CULVERT REMOVAL

| | |
|-------------|-----------|
| 217+29 | 25.0 FOOT |
| 70th STREET | 52.0 FOOT |
| TOTAL = | 77.0 FOOT |

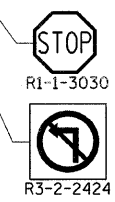
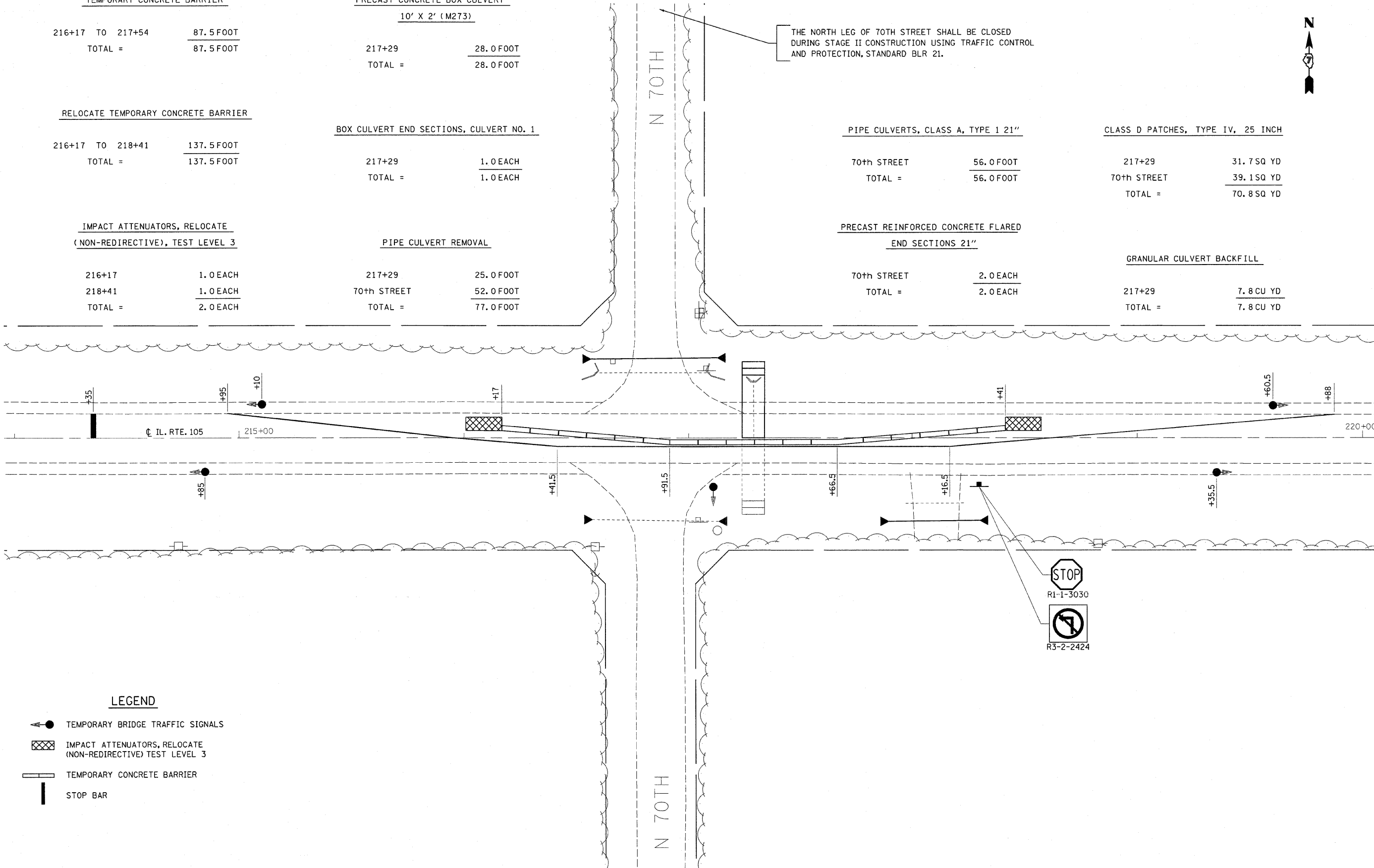
PRECAST REINFORCED CONCRETE FLARED
END SECTIONS 21"

| | |
|-------------|----------|
| 70th STREET | 2.0 EACH |
| TOTAL = | 2.0 EACH |

GRANULAR CULVERT BACKFILL

| | |
|---------|-----------|
| 217+29 | 7.8 CU YD |
| TOTAL = | 7.8 CU YD |

THE NORTH LEG OF 70TH STREET SHALL BE CLOSED DURING STAGE II CONSTRUCTION USING TRAFFIC CONTROL AND PROTECTION, STANDARD BLR 21.



LEGEND

- TEMPORARY BRIDGE TRAFFIC SIGNALS
- IMPACT ATTENUATORS, RELOCATE (NON-REDIRECTIVE) TEST LEVEL 3
- TEMPORARY CONCRETE BARRIER
- STOP BAR

• MACON & PIATT

| | | | | | | | | | | | |
|--|----------------------|------------|-----------|---|--|---------------------------|----------|--------|--------------|-----------|--|
| FILE NAME = | USER NAME = swartzrw | DESIGNED - | REVISED - | STATE OF ILLINOIS DEPARTMENT OF TRANSPORTATION | STAGE II - LOCATION 1 TRAFFIC CONTROL | F.A.P. RTE. | SECTION | COUNTY | TOTAL SHEETS | SHEET NO. | |
| c:\pw_work\pwsdot\swartzrw\d0156168\177422-sht-staging.dgn | | DRAWN - | REVISED - | | | 741 | (11.12)T | • | 85 | 41 | |
| PLOT SCALE = 20.0000' / in. | | CHECKED - | REVISED - | | | CONTRACT NO. 74422 | | | | | |
| PLOT DATE = 9/16/2011 | | DATE - | REVISED - | | | ILLINOIS FED. AID PROJECT | | | | | |

SCALE: 20 SHEET NO. 2 OF 9 SHEETS STA. 214+00 TO STA. 220+00